

ADOT Project Management Academy

Module 6: Construction and Maintenance

Maintenance Considerations in Urban Districts

Presentation by Raul Amavisca

December 11, 2024

Central District Overview

- Serves two counties
- 27 incorporated communities
- Resident population @ 4.8 million
- It has 9 of 10 largest cities of Arizona
- 2,016 maintenance lane miles
- 11 construction & 15 maintenance units - @ 250 people



Central District Maintenance Concerns

- Maintaining the roadway, roadside, structures & drainage systems
- Reacting to inclement weather
- Reacting to civil disturbances
- Right of Way - Ownership, use and clarity
- Planning/Staging for large scale events such as: NCAA Final Four, Super Bowl, Football (US & Int'l)
- Permitting for encroachments or events

Maintaining roadway - WB I-10 near Gila River



Maintaining roadway - NB I-17 north of Jomax Rd



Maintaining roadway - NB I-17 north of Jomax Rd



Maintaining roadway - NB I-17 @ Dunlap



Maintaining roadway - WB L202 at I-10



Maintaining roadsides - EB I-10 at Warner



Maintaining Structures @ I-10 Deck Park



Maintaining Structures - I-10 Deck Park





Maintaining Structures - NB 16th St on I-17



Maintaining Structures - SB 7th Ave & I-17



Maintaining Structures - NB 7th Ave & I-17



Maintaining Structures - NB 7th Ave & I-17



Maintaining Structures - NB 7th Ave & I-17





Reacting to inclement weather - SR 88



Reacting to inclement weather - SR 88



Reacting to inclement weather - SR 88



Reacting to inclement weather - SR 88



Riprap (a concrete and sand mixture) was used to make repairs to SR 88.

1 / 4

Reacting to inclement weather - L303



Reacting to civil disturbances



Thousands protest in downtown Phoenix for 4th straight night, people being detained

For the fourth straight night, thousands of people hit the streets of downtown Phoenix to protest on Sunday, and some of those participating got violent.

Reacting
to
civil
disturbances

Phoenix Protest Organizer Jarrett Maupin Blames Other Groups for Thursday's Damage

RAY STERN | MAY 29, 2020 | 7:59PM



Jarrett Maupin speaks with an Arizona Department of Public Safety Officer at Thursday's protest. / [Screenshot from YouTube/Arizona Auditor](#)

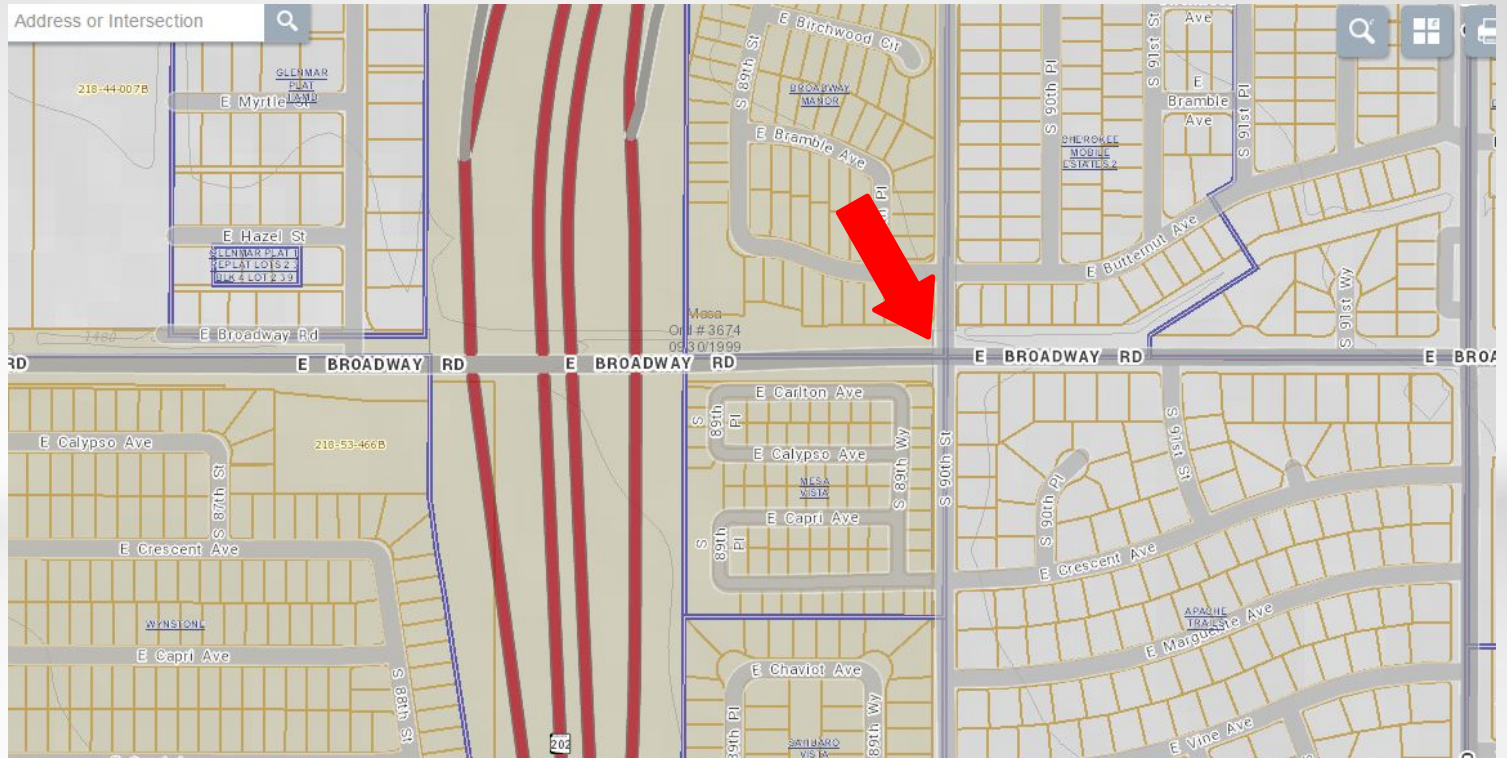
Reacting to civil disturbances



Reacting to civil disturbances or other events



Liability & Right of Way



Design for the end in mind - including traffic



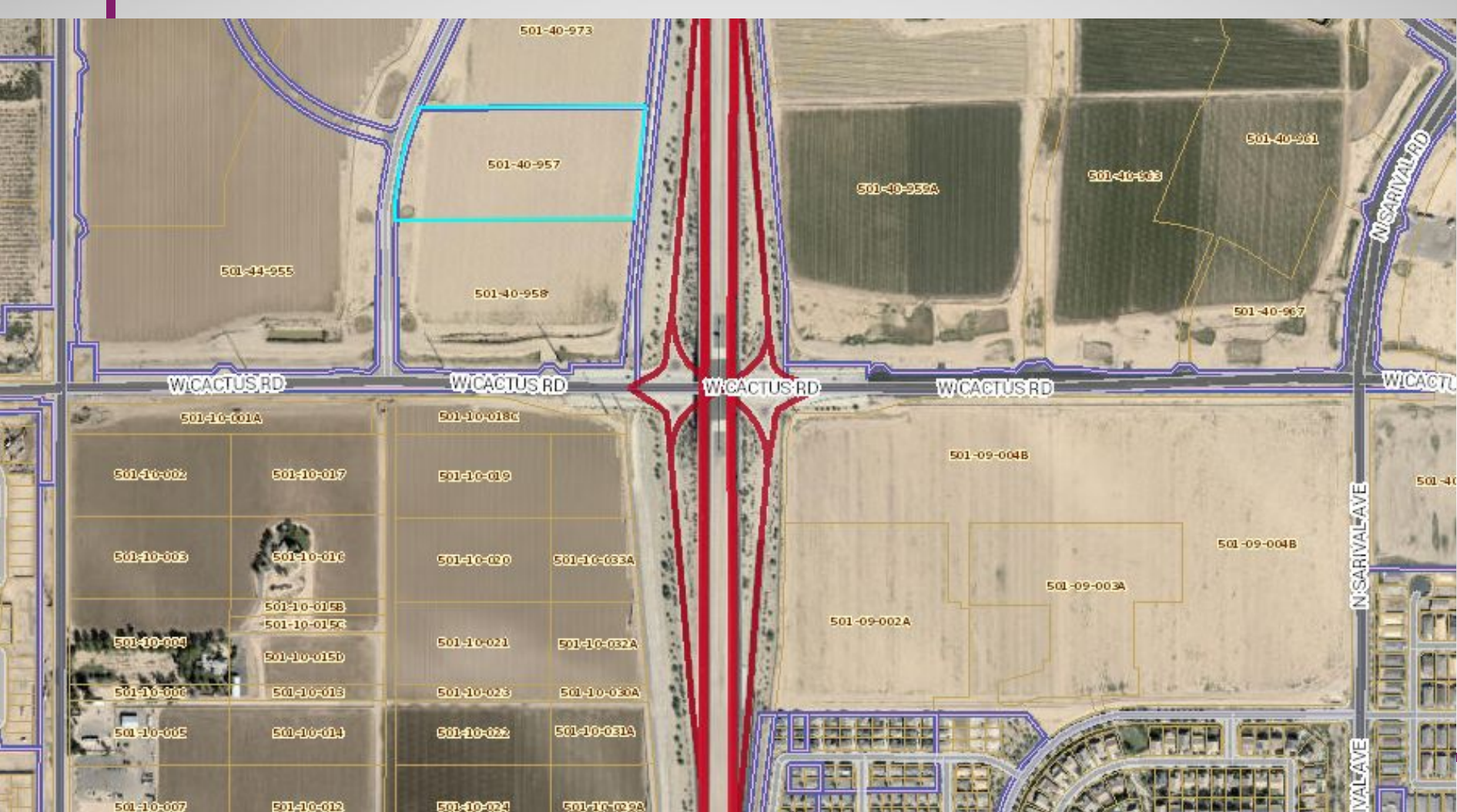
Roadway Design Guidelines

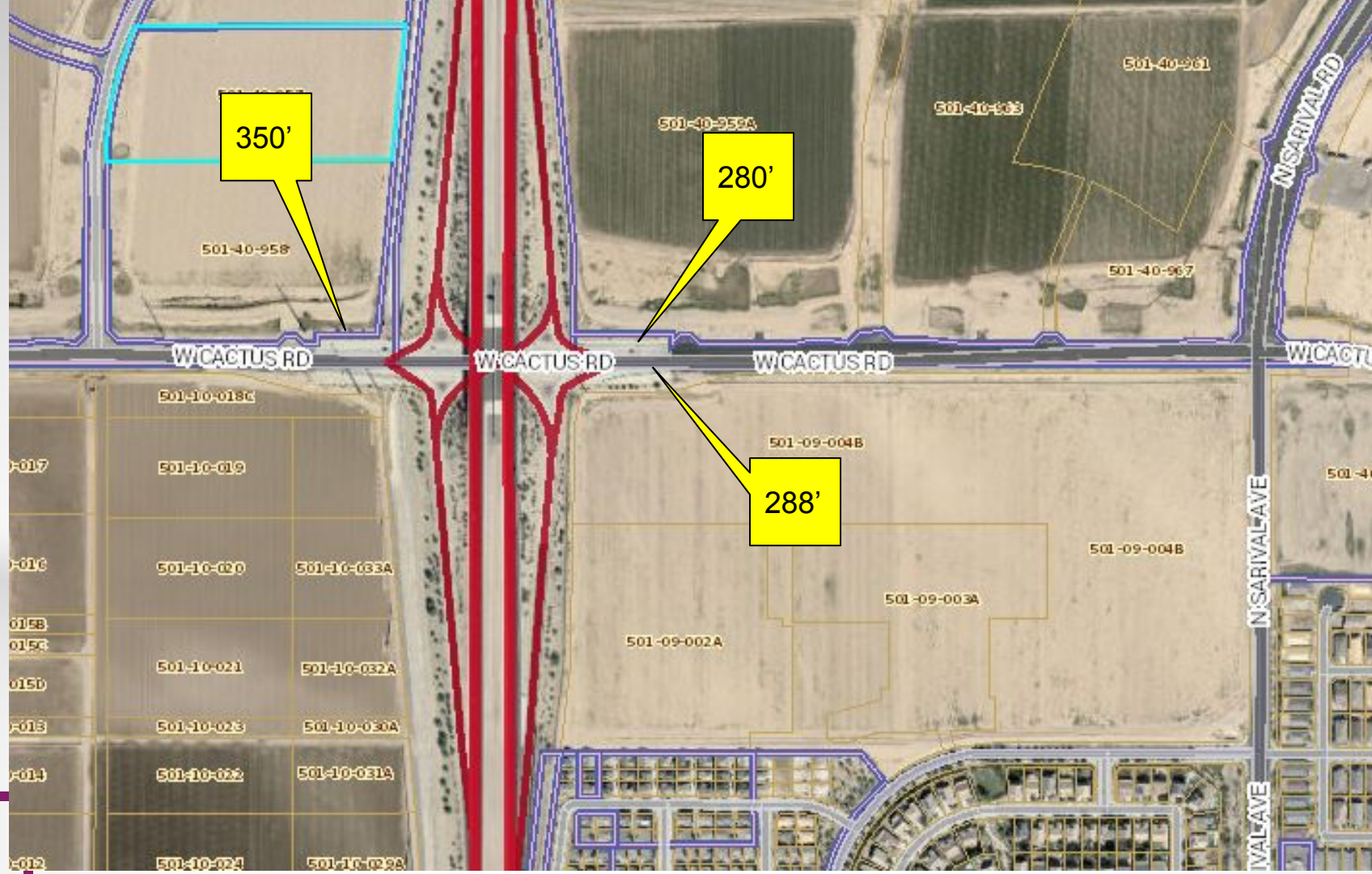
Access control is important for safety and flow of traffic

Min 330 feet from on ramp

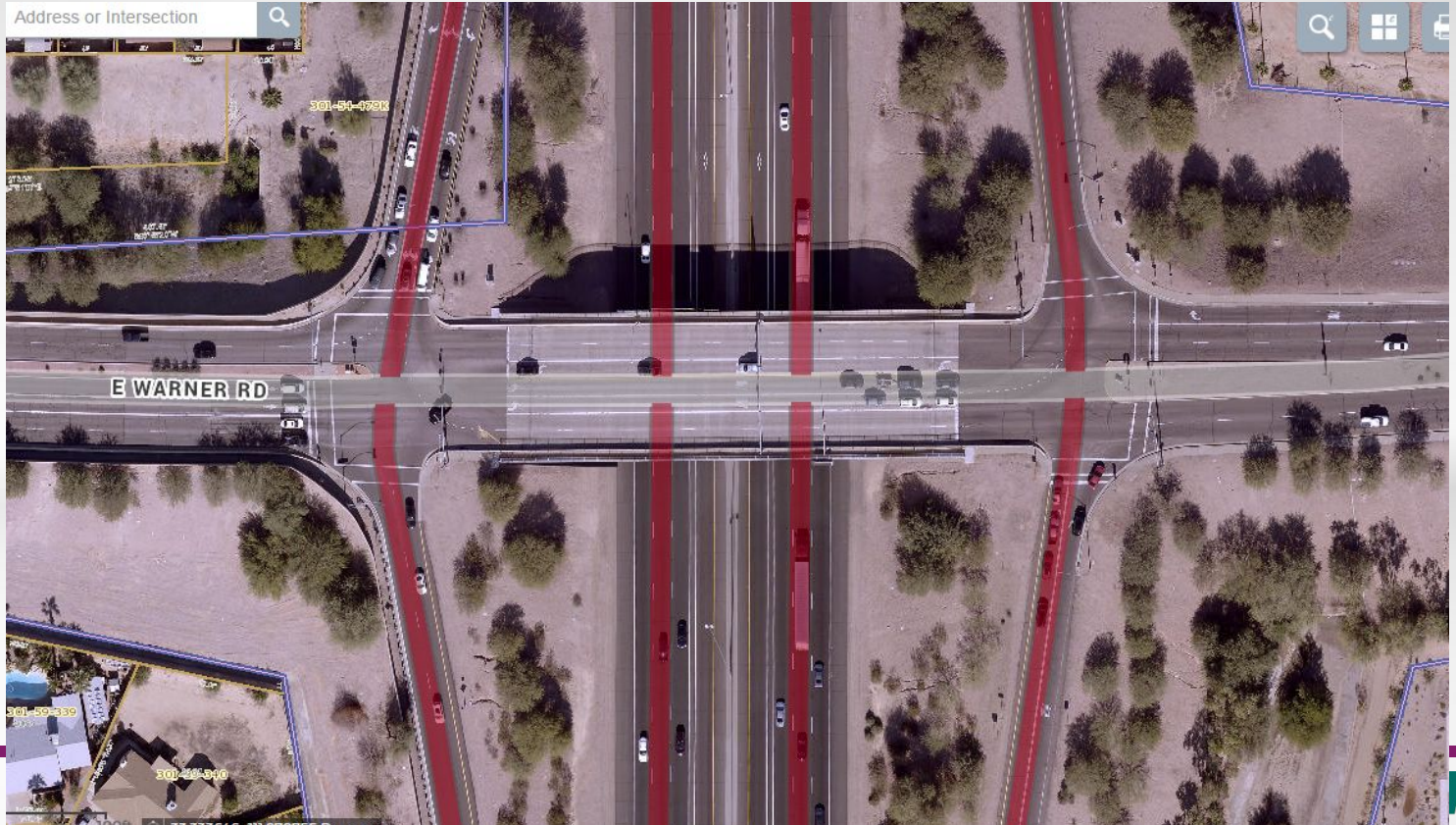
Min 660 feet from the off ramp

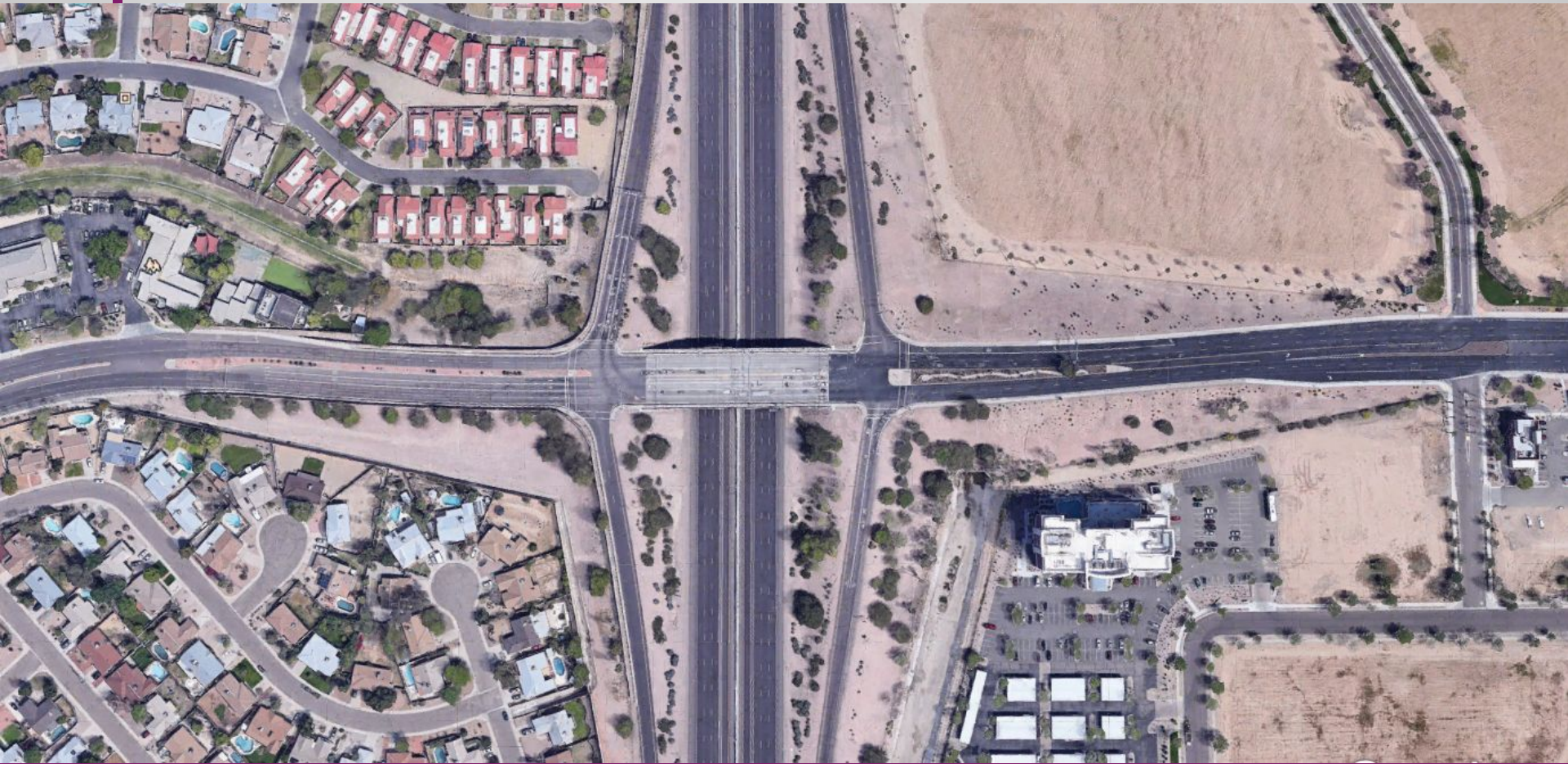
Min 2640 feet to nearest signal



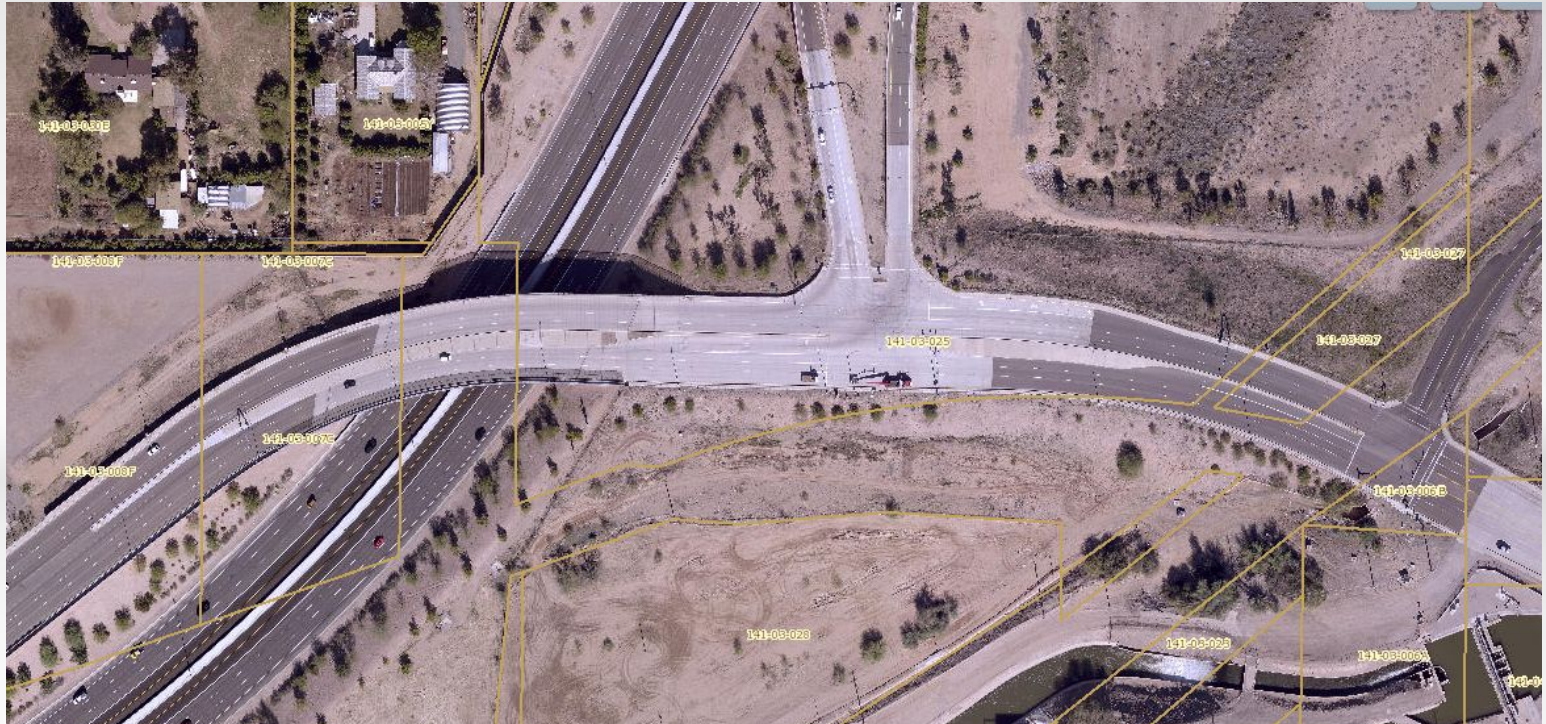


Design for the end in mind





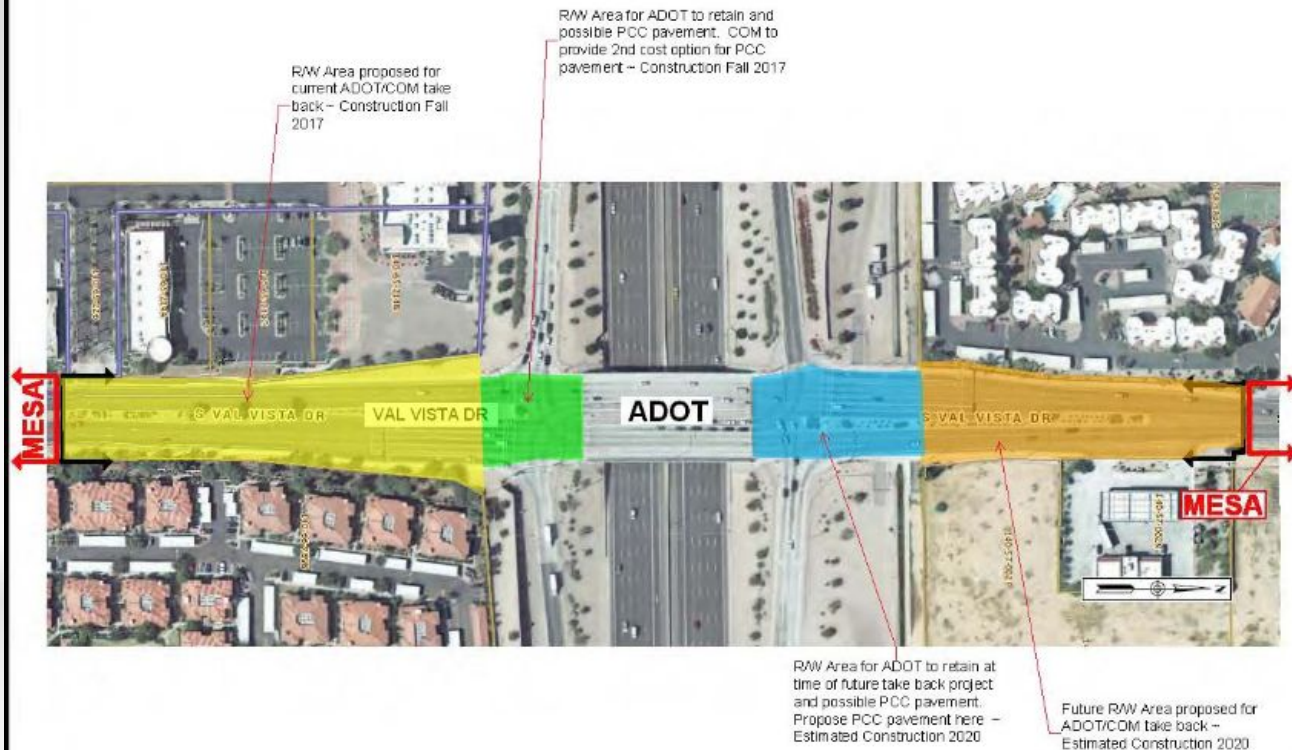
Where do you draw the line?



Design for the end in mind



CP0105 - Val Vista Drive Baseline to US60 R/W Take back Options & Construction Sequencing



DESIGN	NAME	DATE	ARIZONA DEPARTMENT OF TRANSPORTATION	PRELIMINARY
DRAWN	DLO		INTERMODAL TRANSPORTATION DIVISION	NOT FOR CONSTRUCTION
CHECKED			CITY OF MESA	OR RECORDING
TEAM LEADER			MASTER ROADWAY MAINTENANCE EXHIBIT A	
ROUTE: US 60	LOCATION: VAL VISTA DR / SUPERSTITION FWY			SHEET 42 OF 42
JPA NO:				

I-17 Ped Bridge at Maryland



Please

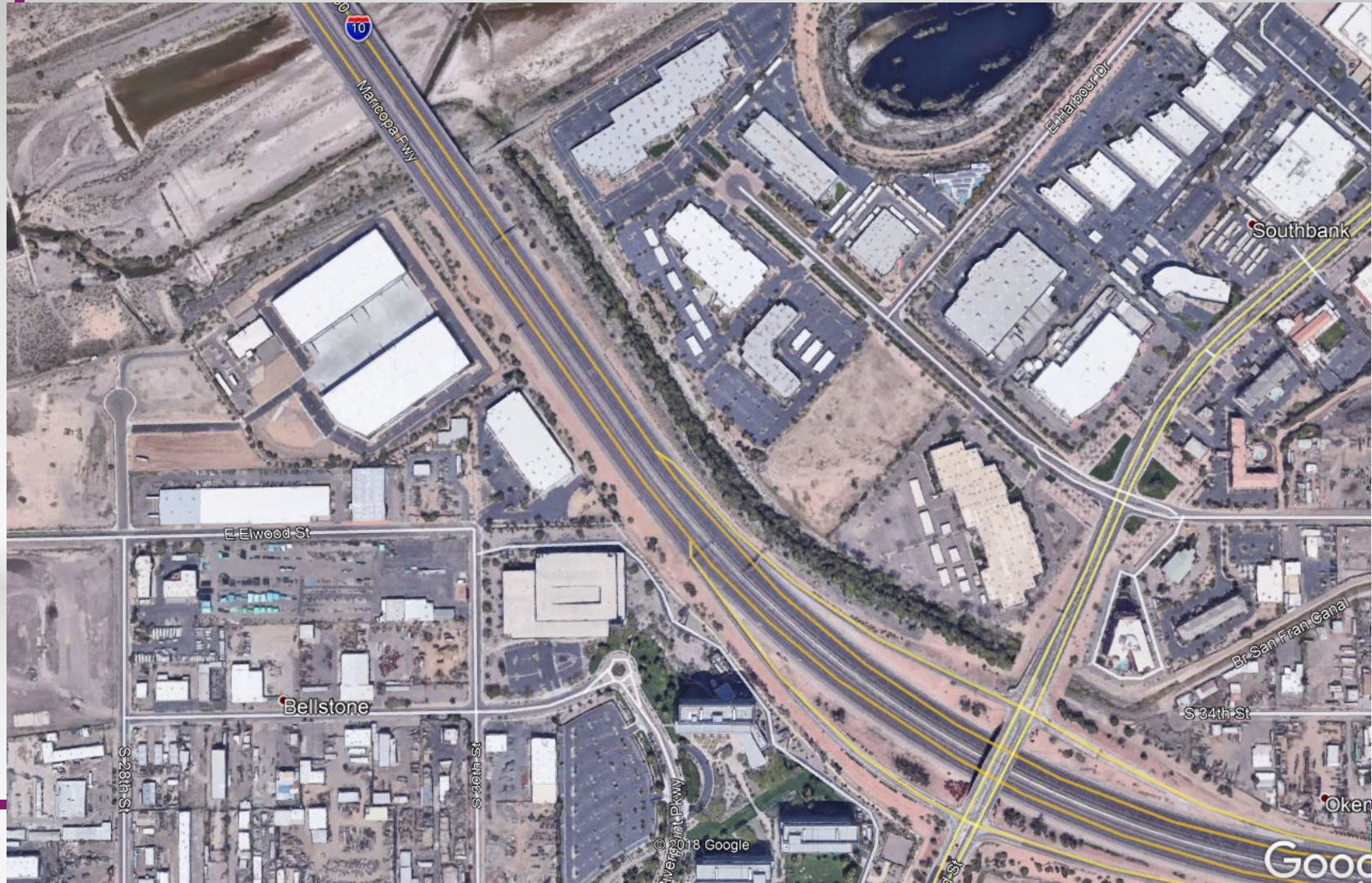
- If you can, extend the PCCP to the final Right of Way line at new or redesigned intersections so it's clear.
 - If not, go straight across on the concrete on either side of the roadway.
- Or USE angle irons to define R/W.

Please

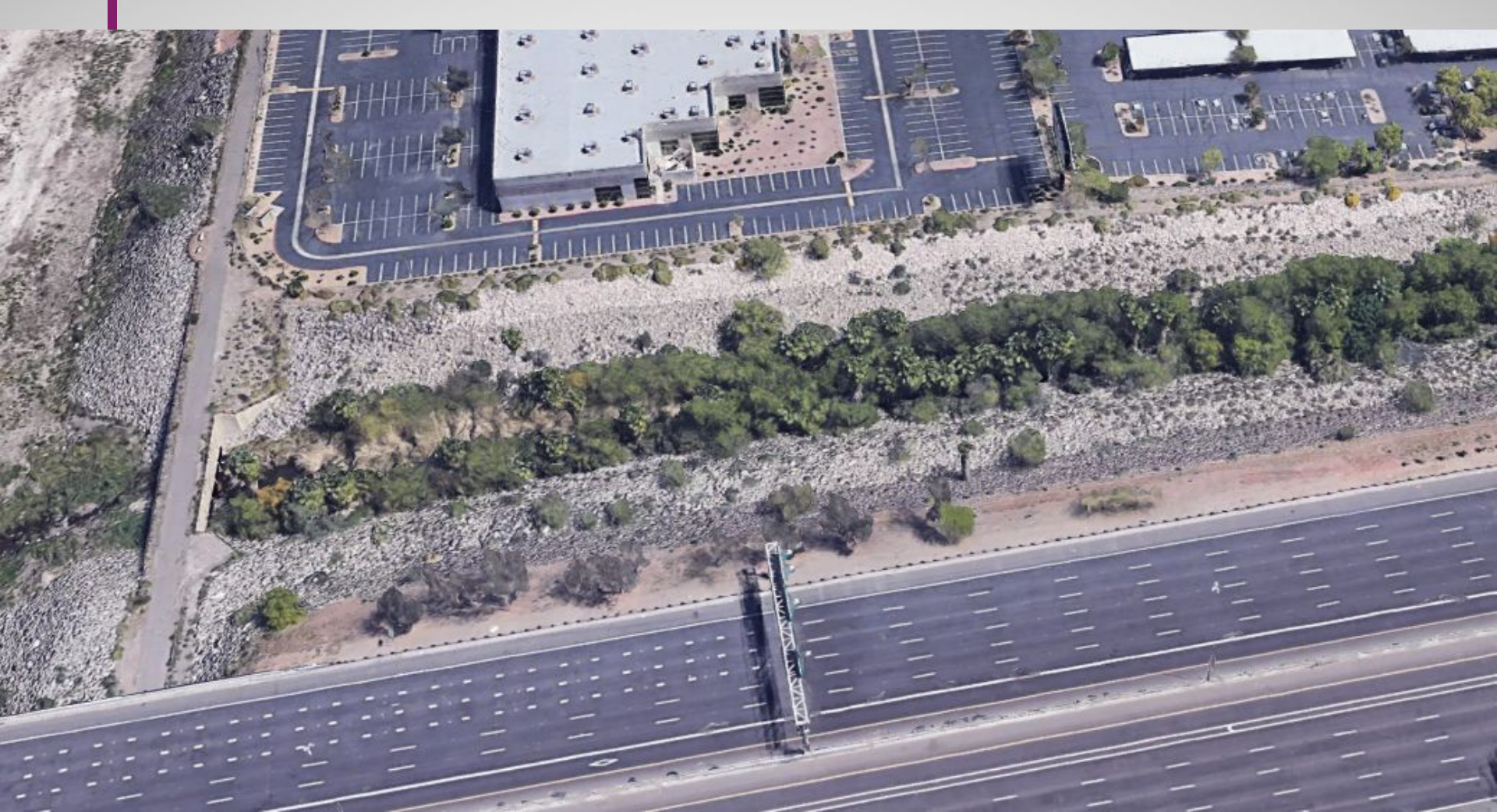
- Ensure the IGA clearly indicates where the final Right of Way will be after project completion.
- Ensure it is clear who maintains what.
- Invite Central District Development Engineer to initial meetings.

Please

- Ensure that drainage can be accessed to maintain it.















Just outside my wheelhouse

- Build TI's where off ramps can turn right on red.
- One example where it doesn't happen

Most TI's on US 60 Superstition Freeway

Tempe, Arizona

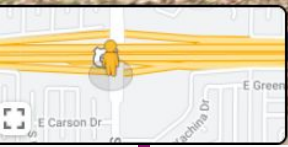


Google



Street View - Mar 2020







Please

- At overcrossings, don't put in potential temporary shelters.
- Make it easy to safely maintain the TI's.



Black Canyon Fwy

A photograph of a highway interchange. In the foreground, a brick-paved shoulder runs alongside a concrete median. A green overhead sign with white text reads "Black Canyon Fwy". To the left, a traffic light hangs over the road, showing a red light. In the background, a multi-lane highway curves through a landscape with mountains in the distance. A white car is visible on the road. The sky is clear and blue.



East Street Hwy

W Glendale Ave

W Glendale Ave

ONLY ONLY ONLY







Please

- Engage the District when Right of Way will be exchanged after the project.
- Give MicroStation plans to Patrick Whiteford of MPD and Michael Mayes of R/W when the project is finalized.

Permits

- Central Districts average over 900 permits a year, but are well over this year.
- New freeways = new developments and resulting new utilities - each with permitting needs.
- Events can be challenges - even annual ones like the various Ironman's, golf, auctions & the like in Scottsdale, Renn Fest, LPGA, etc



Permits

- Overview
- Standard Work
- Weekly Huddle
- [Google Sheets Tracker](#) & [Virtual Dashboard](#)
- Regular meetings with utilities & pre-permit meetings

Questions?