

PROJECT 347 MA 184 F0476 01C
NFA
MARICOPA ROAD
STATE ROUTE 347: RIGGS ROAD TRAFFIC INTERCHANGE
CONSTRUCT TRAFFIC INTERCHANGE

ADA COMPLIANCE AND FEASIBILITY REPORT

January 20, 2023

PREPARED BY

Kimley»»Horn

PREPARED FOR



ARIZONA DEPARTMENT OF TRANSPORTATION

TABLE OF CONTENTS

INTRODUCTION	1
1. SIDEWALK	2
2. CROSSWALKS	2
3. CURB RAMPS	2
4. DRIVEWAYS	3
5. PEDESTRIAN ISLAND CROSSINGS.....	3
6. ACCESSIBLE PEDESTRIAN SIGNAL LOCATIONS.....	4
7. HANDRAIL LOCATIONS.....	4
8. OBSTRUCTIONS & ADA FEATURES NEEDED	4
APPENDICES	5

APPENDICES

ADA Feature Location Maps	Appendix A
ADA Feature Photos (Non-Compliant Only)	Appendix B

LIST OF TABLES

Table 1: ADOT FIS Summary of ADA Features	1
Table 2: Summary of All Action Items	2
Table 3: Driveway Action Items.....	3
Table 4: Accessible Pedestrian Signal Action Items.....	4

INTRODUCTION

Project 347 MA 184 F0476 01C, Maricopa Road (State Route 347): Riggs Road Traffic Interchange provides a grade separated traffic interchange (TI) at the intersection of State Route 347 and Riggs Road (Milepost 185.3). The proposed project is located in the Arizona Department of Transportation's (ADOT's) Central District within Maricopa County in south-central Arizona. The approximate length of project is 1.1 miles. The Project Manager is Bharat Kandel (Phone: 602-712-8736).

All Americans with Disabilities Act (ADA) features within ADOT right-of-way (ROW) will be impacted by this project. All ADA features within the project limits were evaluated for compliance with the 2010 ADA Standards for Accessible Design (2010 Standards).

There are nine ADA features within the project limits of which none are listed in the ADOT Feature Inventory System (FIS). Three are outside existing ADOT ROW. Of the nine ADA features within the project limits, seven are not in compliance with the 2010 ADA standards. A summary of the non-compliant locations and locations which need to be evaluated for compliance is included in this listing. These locations should be inspected post-construction to determine whether the feature exists and if it is ADA compliant. A summary of the total compliant and non-compliant features is shown in the table below.

Table 1: ADOT FIS Summary of ADA Features

Feature Type	Compliant	Non-Compliant	Total
Sidewalk	0	0	0
Crosswalks	0	0	0
Curb Ramps	0	0	0
Driveways	2	2	4
Pedestrian Traffic Island Crossings	0	0	0
Accessible Pedestrian Signals	0	5	5
Handrail	0	0	0
Obstructions/Needs	0	0	0
Total	2	7	9

A total of 9 improvements are proposed with this project. A summary of all action items proposed to be implemented is shown in the table below.

Table 2: Summary of All Action Items

	Total Proposed Improvements	Total Constructed Improvements
Proposed Action Item- Driveways		
Driveway will be reconstructed with this project	3	
Driveway will be removed with this project	1	
Proposed Action Item- Accessible Pedestrian Signals		
Pedestrian signal will be removed with this project	5	
Total	9	

1. SIDEWALK

There is no sidewalk within the project limits.

2. CROSSWALKS

There are no crosswalks within the project limits.

3. CURB RAMPS

There are no curb ramps within the project limits.

4. DRIVEWAYS

There are four driveways within the project limits, none of which are listed in the ADOT FIS. Two locations are non-compliant. The action items for driveways are summarized in the table below:

Table 3: Driveway Action Items

Asset ID	Location	Beginning MP	Compliance Evaluation		DCR Proposed Action	Final Proposed Action	Construction Action
			From FIS Report	From Field Survey			
XXXDW01	Revolution Industrial Driveway	185.19 (Lt)	Not in FIS Database	Cross Slope > 2%	Driveway will be reconstructed with this Project		
XXXDW02	Revolution Industrial Driveway	185.20 (Lt)	Not in FIS Database	Compliant	Driveway will be reconstructed with this Project		
XXXDW03	Revolution Industrial Driveway	185.21 (Lt)	Not in FIS Database	Cross Slope > 2%	Driveway will be reconstructed with this Project		
XXXDW04	Gila River Indian Community Utility Authority Maricopa Substation Driveway	185.29 (Lt)	Not in FIS Database	Compliant	Driveway will be removed with this Project		

5. PEDESTRIAN ISLAND CROSSINGS

There are no pedestrian island crossings within the project limits.

6. ACCESSIBLE PEDESTRIAN SIGNAL LOCATIONS

There are five Accessible Pedestrian Signal locations within the project limits, none of which are listed in the ADOT FIS. All locations are non-compliant. The action items for accessible pedestrian signals are summarized in the table below:

Table 4: Accessible Pedestrian Signal Action Items

Asset ID	Location	Beginning MP	Compliance Evaluation		DCR Proposed Action	Final Proposed Action	Construction Action
			From FIS Report	From Field Survey			
XXAPS01	SR 347 and Riggs Rd, Southwest Corner	185.27 (Lt)	Not in FIS Database	Not aligned with crosswalk & no ADA accessible route	Pedestrian signal will be removed with this project		
XXAPS02	SR 347 and Riggs Rd, Southeast Corner	185.29 (Rt)	Not in FIS Database	Not aligned with crosswalk & no ADA accessible route	Pedestrian signal will be removed with this project		
XXAPS03	SR 347 and Riggs Rd, Southeast Corner	185.29 (Rt)	Not in FIS Database	Not aligned with crosswalk & no ADA accessible route	Pedestrian signal will be removed with this project		
XXAPS04	SR 347 and Riggs Rd, Northwest Corner	185.29 (Lt)	Not in FIS Database	Not aligned with crosswalk & no ADA accessible route	Pedestrian signal will be removed with this project		
XXAPS05	SR 347 and Riggs Rd, Northwest Corner	185.29 (Lt)	Not in FIS Database	Not aligned with crosswalk & no ADA accessible route	Pedestrian signal will be removed with this project		

7. HANDRAIL LOCATIONS

There is no handrail within the project limits.

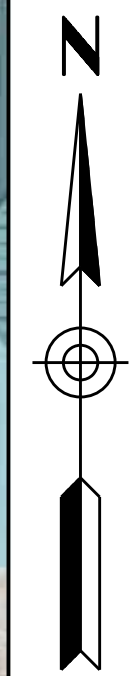
8. OBSTRUCTIONS & ADA FEATURES NEEDED

There are no Obstructions nor additional ADA features needed within the project limits.

APPENDICES

ADA Features Location Maps	Appendix A
ADA Feature Photos (Non-Compliant Only)	Appendix B

REVOLUTION INDUSTRIAL



#XXDW01
Crosswalk
Cross Slope > 2%

#XXDW02
Crosswalk
Compliant

#XXDW03
Crosswalk
Cross Slope > 2%

RIGGS ROAD

MATCHLINE PAGE 2

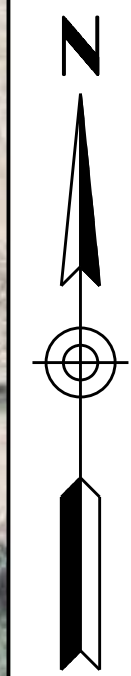


No ADA
Facilities

RIGGS ROAD

MATCHLINE PAGE 1

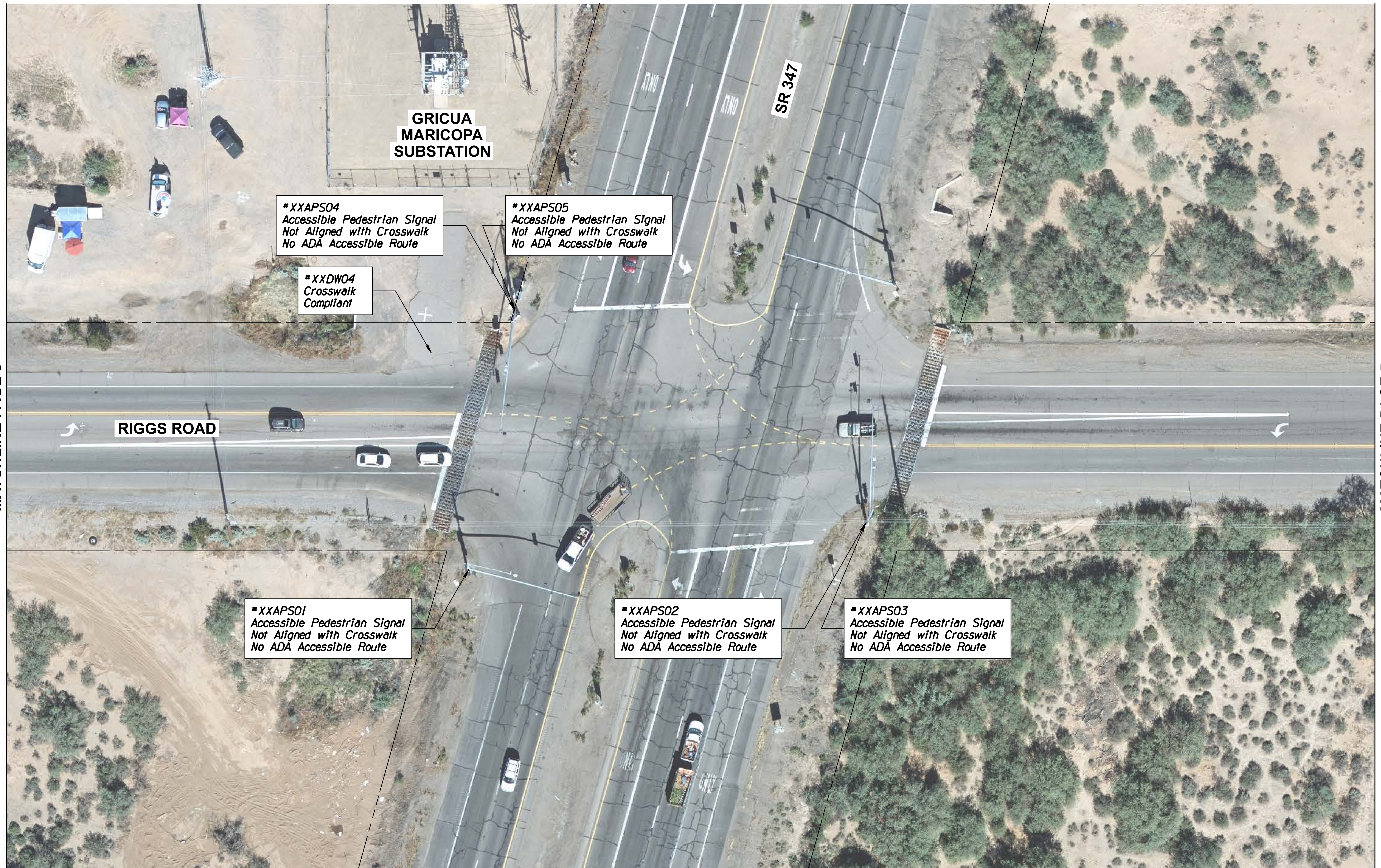
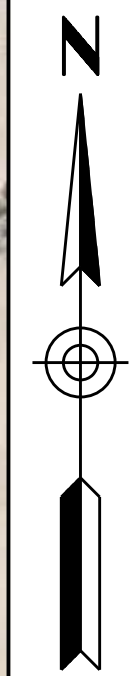
MATCHLINE PAGE 3



MATCHLINE PAGE 2

MATCHLINE PAGE 4

ADA Feature Location Map



MATCHLINE PAGE 3

MATCHLINE PAGE 5

ADA Feature Location Map



No ADA Facilities

RIGGS ROAD

MATCHLINE PAGE 4

MATCHLINE PAGE 6



No ADA
Facilities

RIGGS ROAD

MATCHLINE PAGE 5

MATCHLINE PAGE 7



No ADA
Facilities

RIGGS ROAD

MATCHLINE PAGE 6

MATCHLINE PAGE 8

ADA Feature Location Map



No ADA
Facilities

RIGGS ROAD

MATCHLINE PAGE 7

MATCHLINE PAGE 9



No ADA
Facilities

RIGGS ROAD

MATCHLINE PAGE 8



XXXDW01



XXXDW02



XXXDW03



XXXDW04



XXAPS01



XXAPS02



XXAPS03



XXAPS04



XXAPS05