

Grand Canyon National Park Airport Runway 3-21 Rehabilitation

PUBLIC OUTREACH MEETING

MAY 29, 2025

Presentation Outline

- Project Team Introductions
- Airport Manager Introduction
- Project Justification and Objectives
- Construction Schedule and Phasing
- Q&A



Project Team

Project Team



Mead
& Hunt

ARIZONA
— DEPARTMENT OF —
TRANSPORTATION



Airport Manager Introduction

- David Reffner

**TO BE FILLED IN BASED ON
HEADSHOT AND BIO FROM
DAVE**



Project Justification

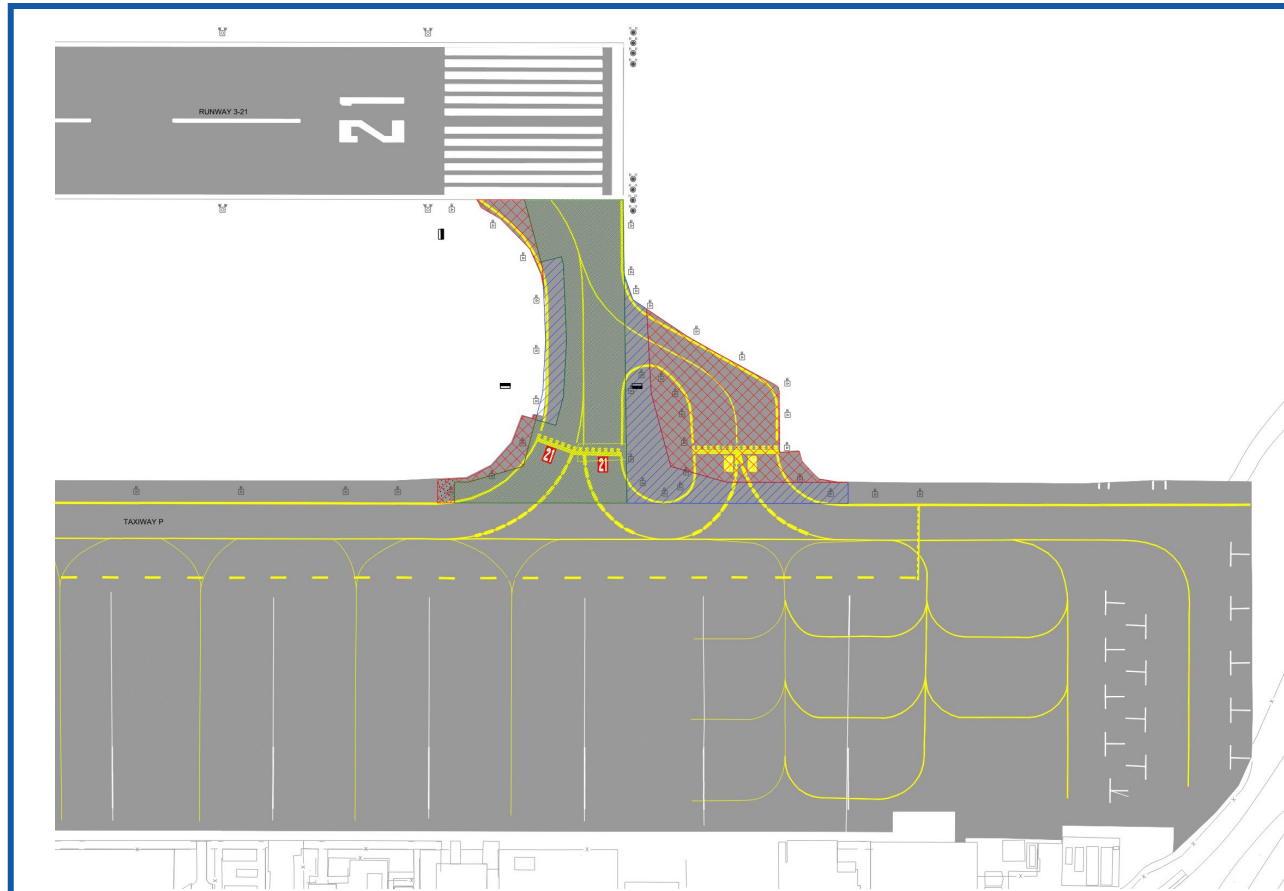
Pavement Condition Index (PCI)

- Runway 3-21
 - Projected PCI: 65
 - Last Major Rehabilitation Project: 2003
- Taxiway Hot Spot (Taxiway A and B)
 - Projected PCI: 48
 - Last Major Rehabilitation Project: 1997

Project Scope

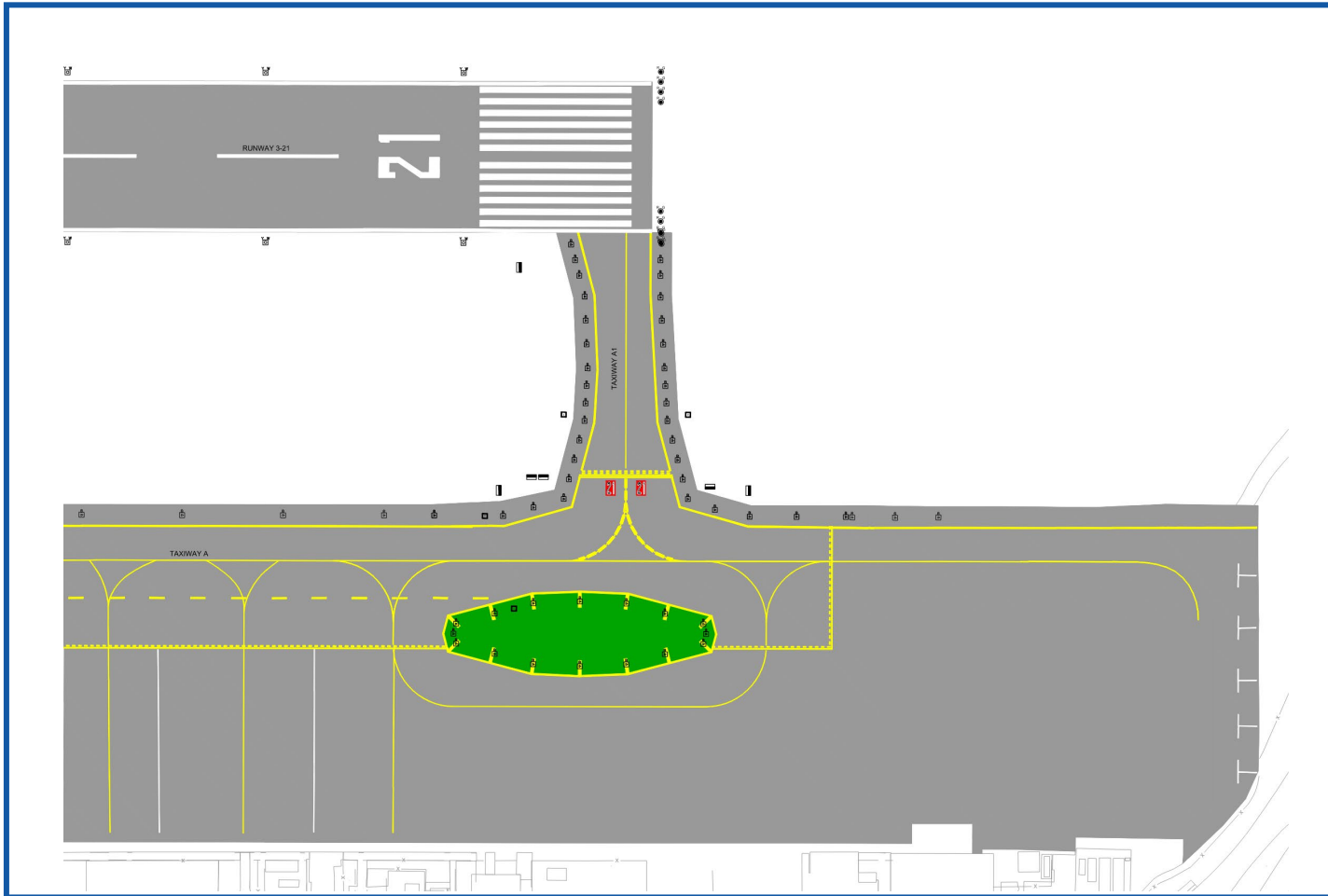
Taxiway Hot Spot (Taxiway A & B)

- 3-inch Mill and Overlay on existing Taxiway B pavement and geometry changes to meet FAA 13B standards
- Removal of Taxiway A pavement, full depth
- Reconstruction of 20-ft taxiway shoulders



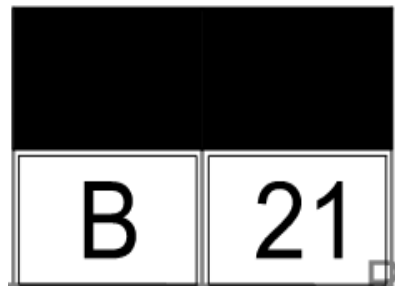
Taxiway Hot Spot (Taxiway A & B)

– Proposed Condition



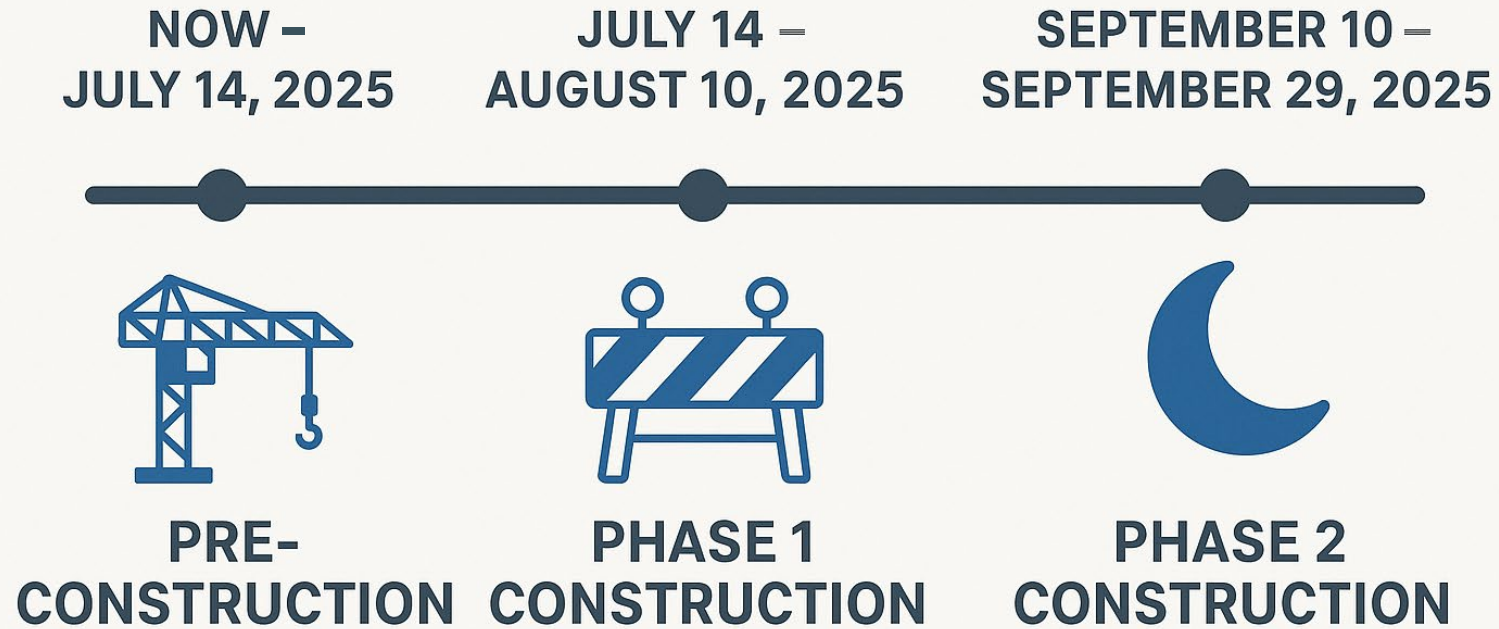
Taxiway Redesignation

- Taxiway P → Taxiway A
- Taxiway A (*will be removed*)
- Taxiway B → Taxiway A1
- Taxiway C → Taxiway A2
- Taxiway D → Taxiway A3
- Taxiway E → Taxiway A4
- Taxiway F → Taxiway A5
- Taxiway G → Taxiway A6



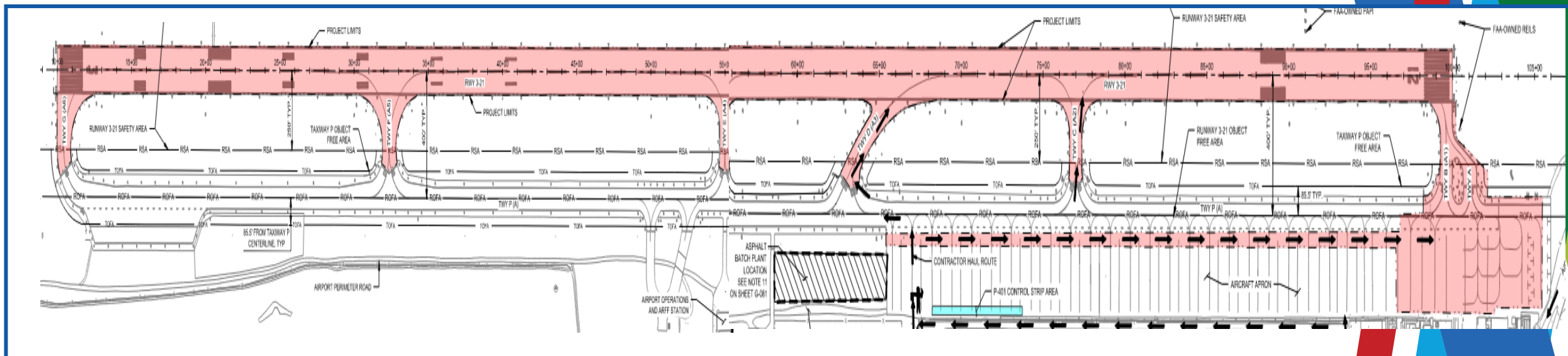
Construction Schedule & Phasing

Construction Schedule



- 28 Calendar Days
- July 14 – August 10
- Runway reopen August 11th

- Full Airport closure



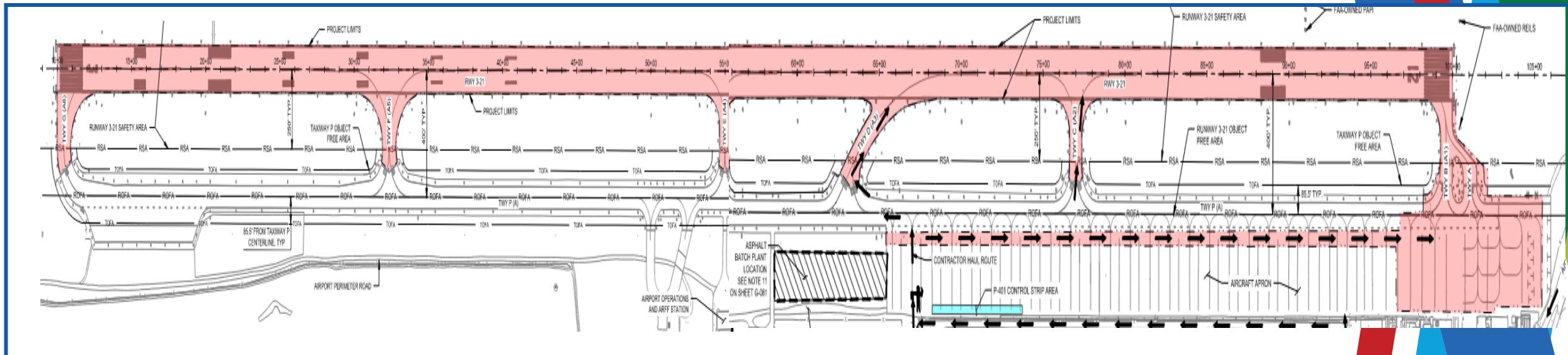
Phase 1

– Tenant Community Impacts:

- Runway 3-21 closed 24 hours a day, 7 days a week throughout Phase 1
- No airfield access to tenants during duration of Phase 1
- Helicopter operations outside the AOA will continue during Runway Closure

– Work Elements

- 3-inch mill and overlay on Runway 3-21
- Rehabilitation and reconfiguration of Taxiway A / B
- Taxiway Redesignation
- Apron Marking Modifications



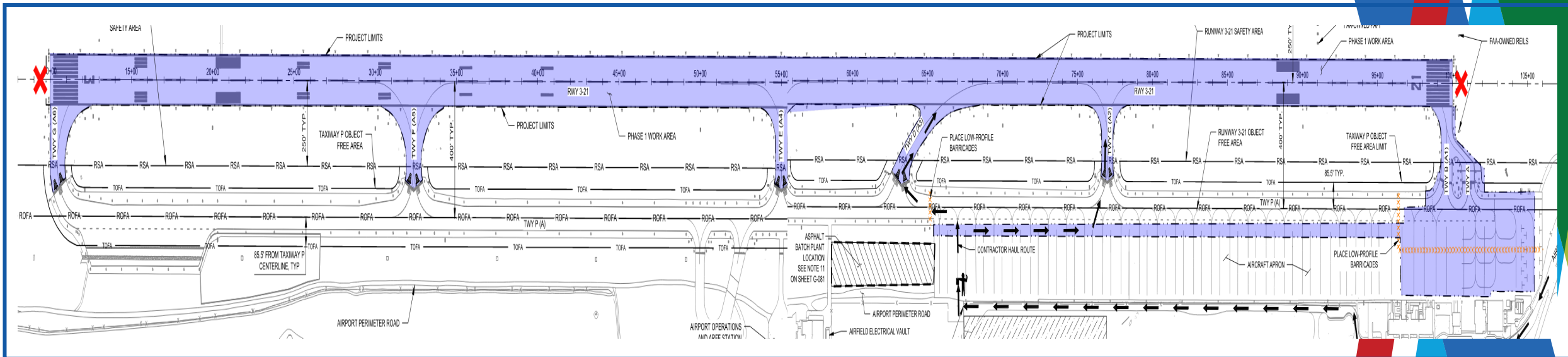
Phase 2

– Duration:

- 20 Calendar Days
- September 10 – September 29
- Nightly closures of Runway 3-21

– Airfield Pavement Impacts:

- All airfield pavements closed at night



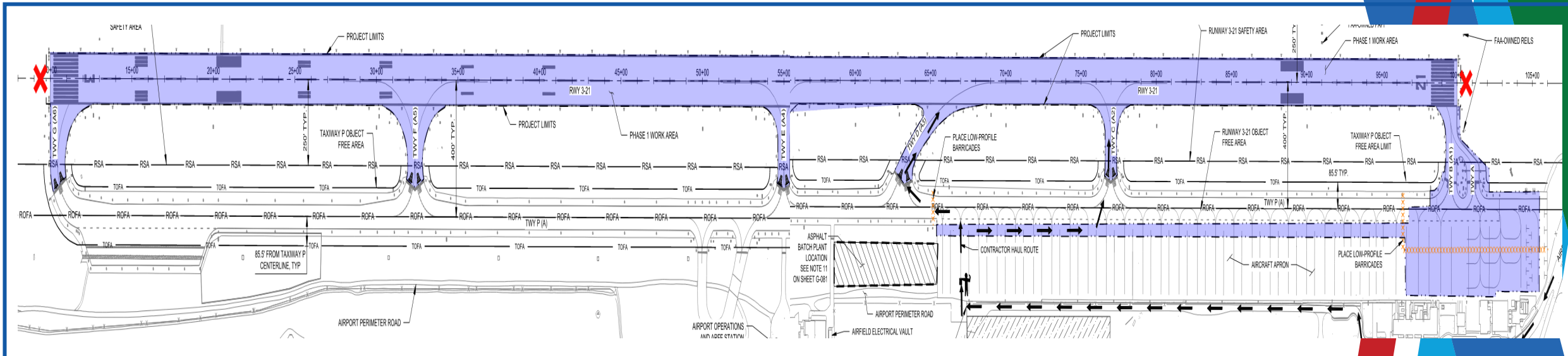
Phase 2

– Tenant Community Impacts:

- Runway 3-21 closed nightly

– Work Elements

- Grooving of Runway 3-21
- Applying second coat of pavement markings



Questions?



Scan QR Code to
visit Project
Website