

ARIZONA

MOTOR VEHICLE CRASH FACTS

2024



2024 Motor Vehicle Crash Facts for the State of Arizona

*Prepared by:
The Arizona Department of Transportation
Multimodal Planning Division*

Publication Date: July 9, 2025



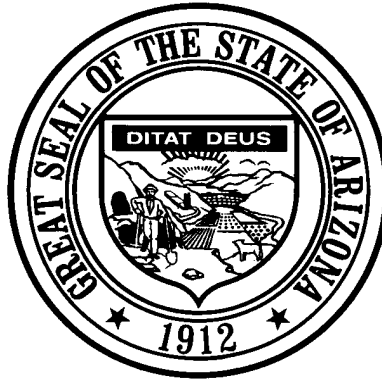
This publication is an annual statistical review of the motor vehicle crashes in the State of Arizona for the calendar year 2024. The results are compiled from Arizona Traffic Crash Reports submitted to the Arizona Department of Transportation by state, county, city, tribal, and other law enforcement agencies. Specific inquiries regarding the data in this report should be directed to:

**The Arizona Department of Transportation
Multimodal Planning Division
Traffic Safety Group
1615 West Jackson Street
Phoenix, AZ 85007**

E-mail: azcrashfacts@azdot.gov

In order to provide the most current information, preliminary data is utilized when necessary. For this reason, previous or future reports may differ slightly and we encourage you to refer to the latest issue of Motor Vehicle Crash Facts.

This issue as well as previous issues of this publication may be viewed and downloaded from the ADOT Web Site:
www.azdot.gov/crashfacts



Katie Hobbs
Governor

Arizona Department of Transportation

Jennifer Toth
Director

State Transportation Board

Jenn Daniels – District 1
Chairman

Ted Maxwell – District 2
Vice Chairman

Members
Richard Searle – District 3
Jenny Howard – District 4
Jamescita Peshlakai – District 5
Sam Elters – District 6

OVERVIEW

Section 1: – Highlights and Historical Trends 1

Section 2: – Geographic Location..... 9

Section 3: – Crash Descriptions 17

Section 4: – Safety Devices 23

Section 5: – Motor Vehicle and Driver Descriptions 26

Section 6: – Alcohol Related Crashes..... 33

Section 7: – Pedestrian and Bicycle Crashes 42

Section 8: – Motorcycle (MC) Crashes 48

Acknowledgements 58

2024 Arizona Crash Facts Summary

Table of Contents

Section 1: Highlights and Historical Trends.....	1
Arizona Crash Facts Summary and Comparison.....	2
Arizona at a Glance – 2024.....	2
Licensed Drivers, Motor Vehicle Registration and Crash History in Arizona.....	3
Historical Trends – VMT and Rates.....	3
Statewide Economic Loss Due to Motor Vehicle Crashes.....	4
State Adjusted Crash Costs.....	4
Traffic Crashes in Arizona by Year.....	5
Victims of Motor Vehicle Crashes.....	6
Suspected Serious Injuries by Person Type 2020-2024.....	6
Young Drivers (age 15-24) killed in crashes 2020-2024.....	6
State Highway System (SHS) vs Local Road Fatalities.....	7
Arizona Fatality Rate vs. Injury Rate.....	7
Traffic Fatalities by Geographic Region.....	7
Traffic Injuries by Geographic Region.....	7
Holiday Crash Statistics.....	8
Section 2: Geographic Location.....	9
Crash Severity by First Harmful Event Statewide.....	10
Crashes by County.....	10
Crash Severity by First Harmful Event in Urban Areas.....	11
Crash Severity by First Harmful Event in Rural Areas.....	11
Analysis by Jurisdiction.....	12
Total Fatalities by County for 2023 and 2024.....	15
Urban and Rural Crashes by Day of Week.....	16
Urban and Rural Fatal Crashes by Day of Week.....	16
All Urban and Rural Crashes vs. Urban and Rural Fatal Crashes by Month.....	16
Section 3: Crash Descriptions.....	17
Manner of Collision in Multi-Unit Crashes.....	18
Lighting Conditions.....	18
Weather Conditions.....	18
Road Surface Conditions.....	19
Roadway Grade.....	19
Roadway Alignment.....	19
All Crashes vs. Fatal Crashes by Time of Day - Weekdays.....	20
All Crashes vs. Fatal Crashes by Time of Day - Weekends.....	20
Crashes by Day of Week.....	21
Fatal Crashes by Day of Week.....	21
All Crashes vs. Fatal Crashes by Month.....	21
Crashes by Hour and Day of Week.....	22
Section 4: Safety Devices.....	23
Child Safety Device Usage (less than five years old).....	24
Driver Safety Device Usage.....	24
Passenger Safety Device Usage.....	24
Driver Safety Device Usage by Gender.....	25
Driver Safety Device Usage by Age.....	25

2024 Arizona Crash Facts Summary

Section 5: Motor Vehicle and Driver Descriptions.....	26
Arizona Motor Vehicle Registrations.....	27
Motor Vehicle Crash Involvement by Vehicle Type.....	27
Hit and Run Drivers Involved in Crashes.....	28
Gender of Drivers Involved in Crashes.....	28
License Status of Drivers Involved in Crashes.....	28
Passengers Killed and Injured by Age and Gender.....	28
Drivers and Passengers Killed and Injured by Vehicle Type.....	29
Drivers Killed and Injured by Age and Gender.....	29
Licensed Drivers in Arizona by Age.....	30
Driver Involvement by Age.....	30
Driver Violations.....	31
Driver Physical Condition.....	31
Distracted Driving Behavior.....	32
Secondary Crashes.....	32
Road Rage Crashes.....	32
Section 6: Alcohol Related Crashes.....	33
Economic Loss Due to Alcohol Related Crashes in Arizona for 2024.....	34
Alcohol Related Crash History.....	34
Manner of Collision in Alcohol Related Crashes.....	34
Alcohol Related Crashes by First Harmful Event.....	35
Alcohol Related Crashes by Vehicle Type.....	35
Lighting Conditions in Alcohol Related Crashes.....	36
Road Surface Conditions in Alcohol Related Crashes.....	36
Gender of Drivers Involved in Alcohol Related Crashes.....	36
Driver Involvement by Age in Alcohol Related Crashes.....	37
When Alcohol Related Crashes Occurred in 2024.....	37
Safety Device Usage for Drinking Drivers.....	37
Persons Killed and Injured in Alcohol Related Crashes.....	38
Alcohol Related Crashes by County.....	38
All Alcohol Related Crashes vs. Fatal Alcohol Related Crashes by Day of Week.....	39
All Alcohol Related Crashes vs. Fatal Alcohol Related Crashes by Month.....	39
All Alcohol Related Crashes vs. Fatal Alcohol Related Crashes - Weekdays.....	40
All Alcohol Related Crashes vs. Fatal Alcohol Related Crashes - Weekends.....	40
Alcohol Related Crashes by Hour and Day of Week.....	41
Section 7: Pedestrian and Bicycle Crashes.....	42
Pedestrians Killed and Injured By Age and Gender.....	43
Pedestrian Crashes by Geographic Location.....	43
Pedestrian Crash History.....	43
Pedestrians Killed by Age and Action.....	44
Pedestrians Injured by Age and Action.....	44
Pedestrian Physical Condition in Motor Vehicle Crashes.....	44
Lighting Conditions in Pedestrian Crashes.....	45
Weather Conditions in Pedestrian Crashes.....	45
Bicyclists Killed and Injured by Age and Gender.....	45
Bicycle Crashes by Geographic Location.....	46
Bicycle Crash History.....	46
Lighting Conditions in Bicycle Crashes.....	46
Weather Conditions in Bicycle Crashes.....	46
Pedestrian Crashes by County.....	47
Bicycle Crashes by County.....	47

2024 Arizona Crash Facts Summary

Section 8: Motorcycle (MC) Crashes	48
MC Fatalities by Year	49
MC Registrations in Arizona	49
Fatality Rate per Registered MC	49
Percent of MC Crashes to All Crashes	49
MC Crashes by First Harmful Event	50
Lighting Conditions in MC Crashes	50
Road Surface Conditions in MC Crashes	50
MC Crashes by Geographic Location	51
Operator Involvement by Age in MC Crashes	51
MC Operator Physical Condition	51
Helmet Use by Gender	52
MC Operator's Helmet Use	52
MC Passenger's Helmet Use	52
MC Operators and Passengers Killed and Injured	53
MC Operator Violations	53
All MC Crashes vs. Fatal MC Crashes by Time of Day - Weekdays	54
All MC Crashes vs. Fatal MC Crashes by Time of Day - Weekends	54
All MC Crashes vs. Fatal MC Crashes by Day of Week	55
Alcohol Related MC Crashes vs. Fatal Alcohol Related MC Crashes by Day of Week	55
MC Crashes by Hour and Day of Week	56
MC Crashes by County	57
Manner of Collision in MC Crashes	57
Acknowledgements	58

2024 Arizona Crash Facts Summary

BREAKDOWN OF ALL CRASHES IN ARIZONA

TOTAL	121,107
FATAL	1,117
INJURY	37,376
PROPERTY DAMAGE ONLY	82,614
URBAN	105,300
RURAL	15,807
ALCOHOL RELATED	5,520
PEDESTRIAN	2,079
BICYCLE	1,379
MOTORCYCLE	3,036
SINGLE VEHICLE	18,057
MULTI-UNIT	103,050

BREAKDOWN OF FATAL CRASHES IN ARIZONA

TOTAL	1,117
ALCOHOL RELATED	312
URBAN	736
RURAL	381
SINGLE VEHICLE	326
MULTI-UNIT	791
ALCOHOL RELATED SINGLE VEHICLE	93
ALCOHOL RELATED MULTI-UNIT	219

BREAKDOWN OF PERSONS KILLED AND INJURED

TYPE	KILLED	INJURED
IN ALL CRASHES	1,228	54,426
IN ALCOHOL RELATED CRASHES	347	3,576
IN URBAN CRASHES	781	46,500
IN RURAL CRASHES	447	7,926
IN SPEED RELATED CRASHES *	417	20,722
IN LANE DEPARTURE CRASHES	771	16,119
IN CRASHES ON THE STATE HIGHWAY SYSTEM	453	17,984
IN CRASHES ON LOCAL ROADS	775	36,442
USING SAFETY DEVICE	397	44,149
NOT USING SAFETY DEVICE	340	3,088
DRIVERS AGE 24 OR YOUNGER	136	8,362
DRINKING DRIVERS AGE 24 OR YOUNGER	41	424

BREAKDOWN OF CRASHES BY TIME

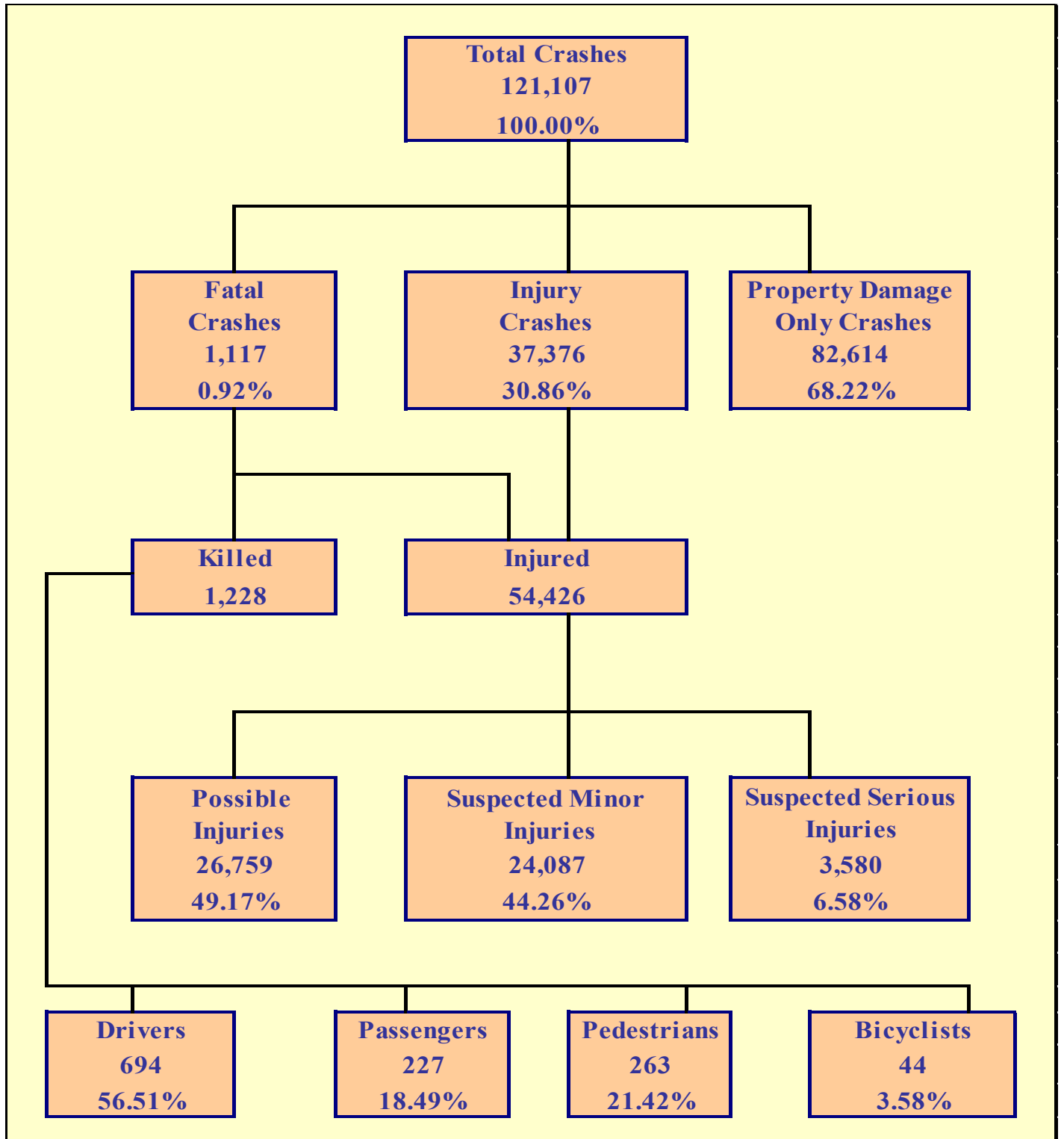
PEAK MONTH FOR ALL CRASHES	OCTOBER
PEAK DAY FOR ALL CRASHES	FRIDAY
PEAK HOUR FOR ALL CRASHES	3 PM - 4 PM
PEAK MONTH FOR FATAL CRASHES	APRIL
PEAK DAY FOR FATAL CRASHES	FRIDAY
PEAK HOUR FOR FATAL CRASHES	6 PM - 7 PM
PEAK DATE FOR ALL CRASHES IN 2024	THURSDAY FEBRUARY 8TH (496 CRASHES)
PEAK DATE FOR FATAL CRASHES IN 2024	NOVEMBER 15TH AND DECEMBER 20TH (9 CRASHES)
PEAK HOUR FOR MOTORCYCLE CRASHES	4 PM - 5 PM
PEAK HOUR FOR ALCOHOL RELATED CRASHES	2 AM - 3 AM
PEAK HOUR FOR PEDESTRIAN CRASHES	6 PM - 7 PM
PEAK HOUR FOR BICYCLE CRASHES	3 PM - 4 PM

*Note: These numbers represent the total number of fatalities and injuries in crashes where the violation "speed too fast for conditions" or "exceeded lawful speed" was marked on the crash report.

2024 Arizona Crash Facts Summary

Fatalities in Arizona since 1925

Year	Total Fatalities	Year	Total Fatalities
1925	76	1975	670
1926	120	1976	739
1927	147	1977	933
1928	130	1978	1,027
1929	157	1979	1,029
1930	190	1980	947
1931	159	1981	916
1932	166	1982	724
1933	154	1983	675
1934	205	1984	869
1935	217	1985	893
1936	244	1986	1,007
1937	258	1987	939
1938	200	1988	944
1939	215	1989	879
1940	228	1990	869
1941	272	1991	816
1942	230	1992	811
1943	168	1993	799
1944	180	1994	904
1945	283	1995	1,035
1946	236	1996	997
1947	256	1997	950
1948	301	1998	981
1949	281	1999	1,028
1950	325	2000	1,037
1951	415	2001	1,057
1952	396	2002	1,132
1953	397	2003	1,125
1954	402	2004	1,159
1955	358	2005	1,193
1956	486	2006	1,301
1957	461	2007	1,071
1958	509	2008	938
1959	517	2009	806
1960	513	2010	759
1961	510	2011	827
1962	510	2012	821
1963	513	2013	849
1964	588	2014	774
1965	550	2015	897
1966	643	2016	952
1967	574	2017	998
1968	695	2018	1,011
1969	750	2019	980
1970	762	2020	1,055
1971	755	2021	1,194
1972	812	2022	1,320
1973	975	2023	1,308
1974	751	2024	1,228



Section 1: – Highlights and Historical Trends

Table 1 – 1

Arizona Crash Facts Summary and Comparison

Category	2023	2024	Percent Change
Total Crashes	123,256	121,107	-1.74%
Total Fatalities	1,308	1,228	-6.12%
Total Injuries	55,011	54,426	-1.06%
Alcohol Related Fatalities	358	347	-3.07%
Alcohol Related Injuries	3,972	3,576	-9.97%
Urban Fatalities	855	781	-8.65%
Urban Injuries	46,602	46,500	-0.22%
Rural Fatalities	453	447	-1.32%
Rural Injuries	8,409	7,926	-5.74%
MC Operator and Passenger Fatalities	262	219	-16.41%
MC Operator and Passenger Injuries	2,620	2,503	-4.47%
Pedestrian Fatalities	273	263	-3.66%
Pedestrian Injuries	1,821	1,912	5.00%
Bicyclist Fatalities	44	44	0.00%
Bicyclist Injuries	1,296	1,349	4.09%
Millions of vehicle miles traveled (VMT)*	75,438	70,451	-6.61%
Fatalities per 100 million VMT	1.73	1.74	0.53%
Injuries per 100 million VMT	72.92	77.25	5.94%
*The VMT figure for 2024 is preliminary and subject to change.			

Arizona at a Glance – 2024

- Approximately **3.36** persons were killed each day.
- One person was killed every **7** hours and **9** minutes.
- There were **149** persons injured every day.
- One person was injured every **9** minutes and **41** seconds.
- Alcohol Related crashes accounted for **4.56%** of all crashes and **27.93%** of all fatal crashes.
- Crashes where overturning was the first harmful event accounted for **1.87%** of all crashes and **10.74%** of fatal crashes.
- Single vehicle crashes accounted for **14.91%** of all crashes and **29.19%** of all fatal crashes.
- Of all Pedestrian crashes, **12.55%** were fatal while **3.19%** of Bicycle crashes were fatal.
- Crashes which occurred during daylight hours (6:00 a.m. to 6:00 p.m.) accounted for **70.5%** of all crashes.
- Motor vehicle crashes resulted in **\$20.890** billion in economic losses to Arizona.
- Children age 14 and younger accounted for **40** fatalities and **3,137** injuries in motor vehicle crashes.

Section 1: – Highlights and Historical Trends

Table 1 – 2
**Licensed Drivers, Motor Vehicle Registration
 and Crash History in Arizona**

Calendar Year	Total Crashes	Fatal Crashes	Injury Crashes	Property Damage Only Crashes	Total Persons Killed	Total Persons Injured	Total Licensed Drivers	Total Registered Vehicles
2010	106,900	695	33,419	72,786	759	50,463	4,537,653	4,805,904
2011	103,958	756	33,223	69,979	827	49,856	4,634,405	4,855,014
2012	103,940	738	33,595	69,607	821	50,092	4,736,517	4,969,620
2013	107,576	782	34,137	72,657	849	50,440	4,826,903	5,130,780
2014	109,883	709	34,589	74,585	774	51,114	4,922,676	5,300,980
2015	117,121	811	36,371	79,939	897	53,922	5,025,811	5,487,058
2016	127,345	856	38,776	87,713	952	57,003	5,135,262	5,677,208
2017	127,858	917	38,103	88,838	998	55,938	5,221,403	5,843,368
2018	127,749	918	36,711	90,120	1,011	53,681	5,308,307	6,009,850
2019	131,340	909	37,430	93,001	980	54,527	5,375,341	6,167,481
2020	99,321	968	28,895	69,458	1,055	41,757	5,772,928	6,356,220
2021	121,985	1,078	35,628	85,279	1,194	52,245	5,808,545	6,468,399
2022	121,178	1,200	36,477	83,501	1,320	53,188	5,806,528	6,701,468
2023	123,256	1,198	37,706	84,352	1,308	55,011	5,882,804	6,698,633
2024	121,107	1,117	37,376	82,614	1,228	54,426	5,940,043	6,703,999

Table 1 – 3
Historical Trends – VMT and Rates

Calendar Year	Arizona Fatality Rate	Arizona Injury Rate (all injury types)	Arizona Traffic Fatalities	Estimated Motor Vehicle Miles Traveled	Arizona Suspected Serious Injury Rate
2020	1.61	63.68	1,055	65,574	4.77
2021	1.62	70.83	1,194	73,760	5.31
2022	1.73	69.83	1,320	76,165	5.08
2023	1.73	72.92	1,308	75,438	5.02
2024	1.74	77.25	1,228	70,451	5.08
Vehicle miles traveled are shown in million miles and rates per 100 million miles					

*The VMT figure for 2024 is preliminary and subject to change.

Section 1: – Highlights and Historical Trends

Statewide Economic Loss Due to Motor Vehicle Crashes

Fatalities	\$11,684,875,588
Suspected Serious Injuries	\$1,970,786,420
Suspected Minor Injuries	\$3,592,142,484
Possible Injuries	\$2,760,057,055
Property Damage Only	\$882,317,520
TOTAL	\$20,890,179,067

Table 1 – 4

Estimated Economic Loss by County

County	Cost of Traffic Crashes			
	Fatalities	Injuries	PDO	Total
Apache	\$ 275,945,759	\$ 51,036,985	\$ 2,883,600	\$ 329,866,344
Cochise	\$ 323,522,614	\$ 107,808,801	\$ 9,387,720	\$ 440,719,135
Coconino	\$ 618,499,115	\$ 253,348,240	\$ 26,048,520	\$ 897,895,875
Gila	\$ 76,122,968	\$ 79,324,766	\$ 6,685,680	\$ 162,133,414
Graham	\$ 152,245,936	\$ 19,692,140	\$ 1,687,440	\$ 173,625,516
Greenlee	\$ 9,515,371	\$ 8,005,544	\$ 448,560	\$ 17,969,475
La Paz	\$ 275,945,759	\$ 39,120,832	\$ 2,926,320	\$ 317,992,911
Maricopa	\$ 5,652,130,374	\$ 5,519,098,117	\$ 657,289,920	\$ 11,828,518,411
Mohave	\$ 456,737,808	\$ 291,233,276	\$ 24,553,320	\$ 772,524,404
Navajo	\$ 333,037,985	\$ 104,099,784	\$ 8,490,600	\$ 445,628,369
Pima	\$ 1,731,797,522	\$ 796,668,656	\$ 55,856,400	\$ 2,584,322,578
Pinal	\$ 884,929,503	\$ 499,020,392	\$ 38,608,200	\$ 1,422,558,095
Santa Cruz	\$ 66,607,597	\$ 29,331,873	\$ 3,481,680	\$ 99,421,150
Yavapai	\$ 599,468,373	\$ 301,308,888	\$ 27,522,360	\$ 928,299,621
Yuma	\$ 228,368,904	\$ 223,887,665	\$ 16,447,200	\$ 468,703,769
TOTALS	\$ 11,684,875,588	\$ 8,322,985,959	\$ 882,317,520	\$ 20,890,179,067

Table 1 – 5

State Adjusted Crash Costs

1.	Fatality	\$9,515,371
2.	Suspected Serious Injury	\$550,499
3.	Suspected Minor Injury	\$149,132
4.	Possible Injury	\$103,145
5.	Property Damage Only	\$10,680

Source: Crash Costs for Highway Safety Analysis (FHWA)

Section 1: – Highlights and Historical Trends

Traffic Crashes in Arizona by Year

Chart 1 – 1
Total Crashes

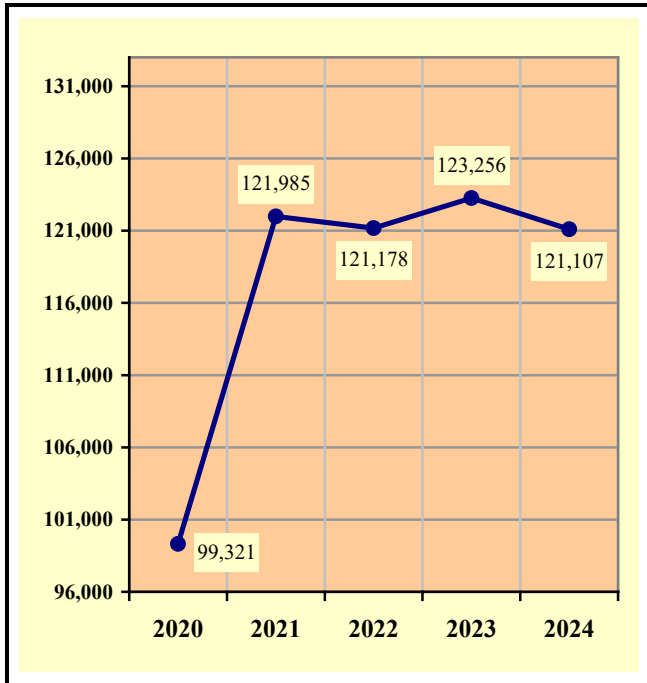


Chart 1 – 2
Fatal Crashes

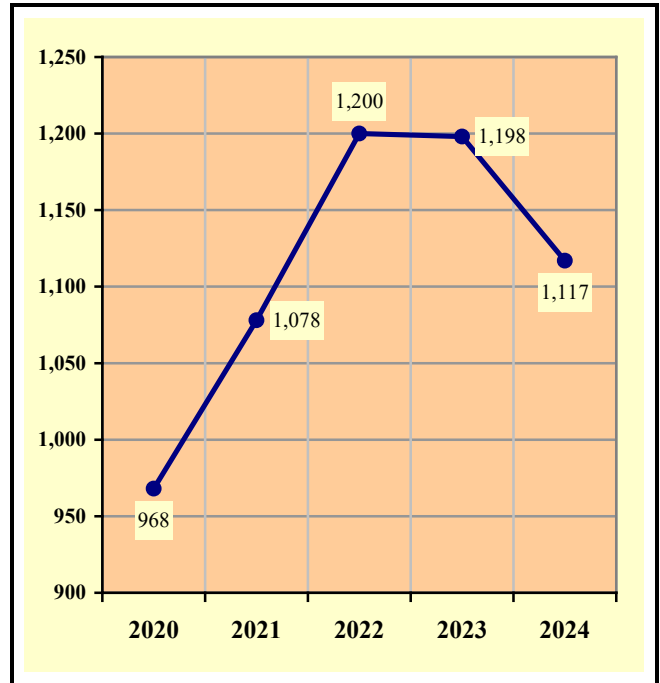


Chart 1 – 3
Injury Crashes

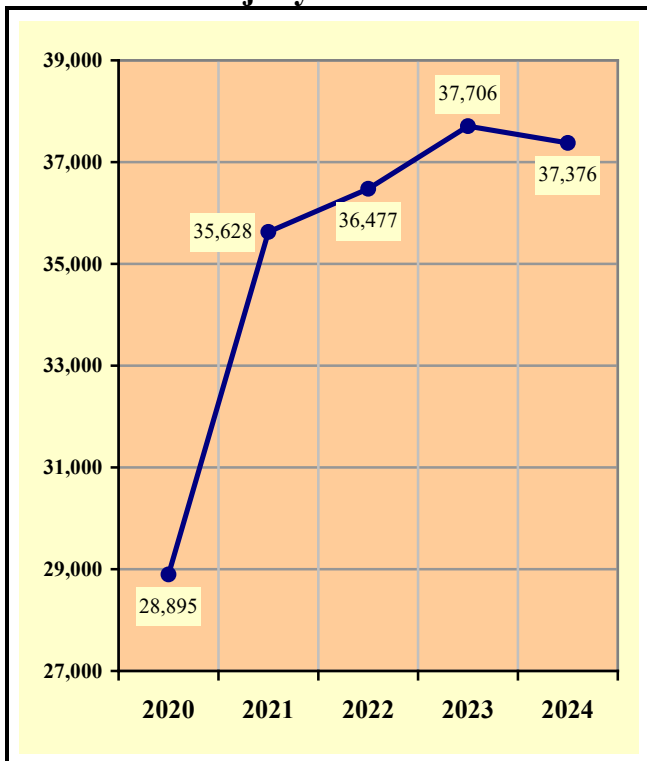
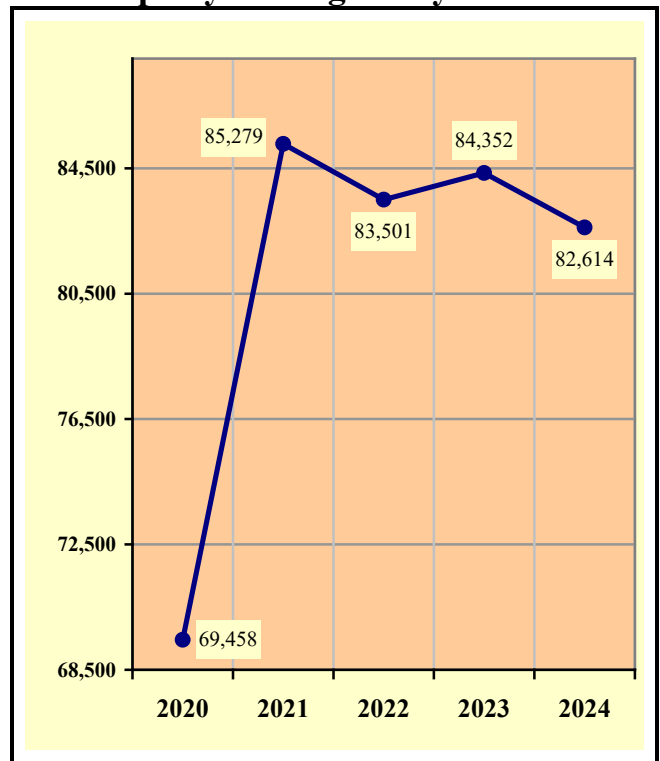


Chart 1 – 4
Property Damage Only Crashes



Section 1: – Highlights and Historical Trends

Table 1 – 6

Victims of Motor Vehicle Crashes

Age of Victim	Persons Killed				Persons Injured			
	Total	Male	Female	Gender Unknown	Total	Male	Female	Gender Unknown
0-4	11	4	7	0	678	320	358	0
5-9	12	7	5	0	1,086	542	544	0
10-14	17	9	8	0	1,373	697	676	0
15-19	88	66	22	0	5,398	2,853	2,545	0
20-24	119	90	29	0	6,843	3,636	3,207	0
25-34	210	159	51	0	11,032	5,795	5,237	0
35-44	197	152	45	0	8,396	4,318	4,078	0
45-54	154	102	52	0	6,643	3,279	3,364	0
55-64	133	102	31	0	5,792	2,947	2,845	0
65-74	141	100	41	0	4,131	1,997	2,134	0
75 & Older	139	81	58	0	2,572	1,295	1,277	0
Unknown	7	1	0	6	482	209	180	93
TOTAL	1,228	873	349	6	54,426	27,888	26,445	93

Table 1 – 7

Suspected Serious Injuries by Person Type 2020-2024

Year	Drivers	Passengers	Pedestrians	Bicyclists	Total
2020	2,007	684	312	126	3,129
2021	2,448	918	412	142	3,920
2022	2,442	831	449	145	3,867
2023	2,432	793	401	160	3,786
2024	2,263	722	417	178	3,580
TOTAL	11,592	3,948	1,991	751	18,282

Table 1 – 8

Young drivers (age 15-24) killed in crashes 2020-2024

Year	Age of Driver										Total
	15	16	17	18	19	20	21	22	23	24	
2020	2	6	9	6	12	14	12	12	14	10	97
2021	1	3	7	14	8	13	18	16	26	12	118
2022	1	4	7	13	21	17	11	11	12	13	110
2023	1	3	9	16	22	19	12	13	20	17	132
2024	2	7	11	14	21	12	25	18	12	14	136
TOTAL	7	23	43	63	84	75	78	70	84	66	593

Section 1: – Highlights and Historical Trends

Chart 1 – 5

State Highway System (SHS) vs Local Road Fatalities

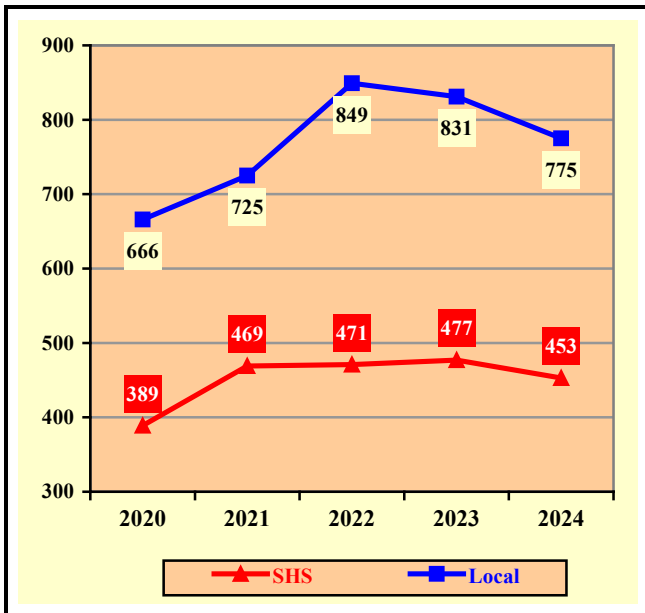


Chart 1 – 6

Arizona Fatality Rate vs. Injury Rate



The VMT figure for 2024 is preliminary and subject to change.

Chart 1 – 7

Traffic Fatalities by Geographic Region

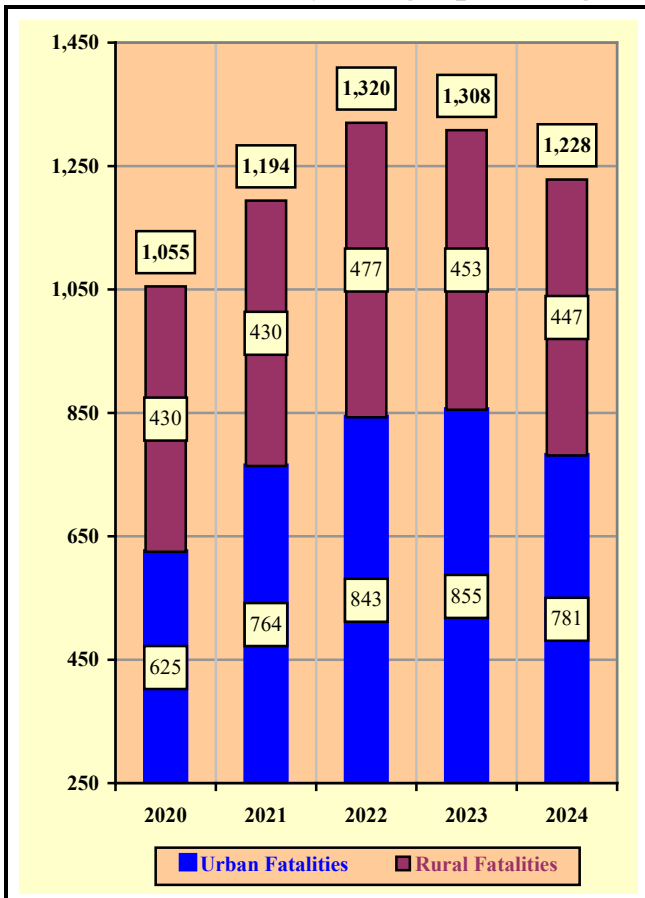
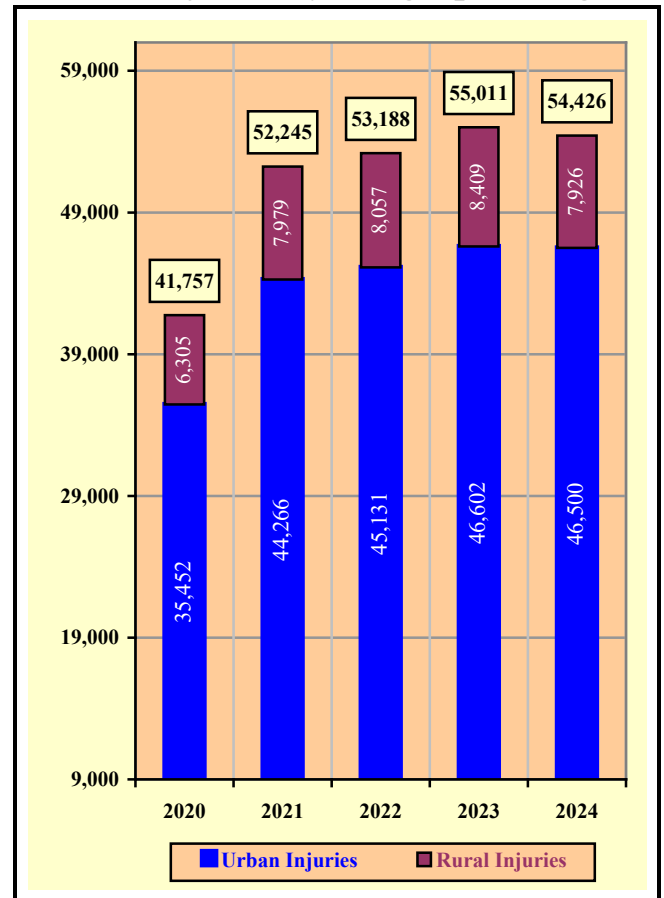


Chart 1 – 8

Traffic Injuries by Geographic Region



Section 1: – Highlights and Historical Trends

Table 1 – 9

Holiday Crash Statistics

Holidays such as Memorial Day, Labor Day, and Thanksgiving are regarded as three or four day weekend holidays for statistical purposes. Holidays such as Christmas, New Year's Day, and the Fourth of July are celebrated on specific dates; which make the holiday period range from two to five days in length.

Holiday fatality statistics are based on fatal crashes occurring from 6:00 p.m. on the last working day prior to the holiday through 5:59 a.m. the day following the holiday period. Example: Thanksgiving fatalities are counted from Wednesday evening at 6:00 p.m. through 5:59 a.m. of the following Monday.

2024 Holidays	Beginning at 6:00 p.m.	Ending at 5:59 a.m.	Days Counted for Holiday Period	Fatal Crashes	Persons Killed	Alcohol Related Fatal Crashes	Alcohol Related Fatalities
New Year's Day	Friday 12/29/2023	Tuesday 1/2/2024	4	13	13	4	4
Memorial Day	Friday 5/24/2024	Tuesday 5/28/2024	4	11	14	3	5
July 4th	Wednesday 7/3/2024	Monday 7/8/2024	5	12	15	5	7
Labor Day	Friday 8/30/2024	Tuesday 9/3/2024	4	10	10	3	3
Thanksgiving Day	Wednesday 11/27/2024	Monday 12/2/2024	5	10	10	4	4
Christmas Day	Tuesday 12/24/2024	Thursday 12/26/2024	2	4	4	2	2

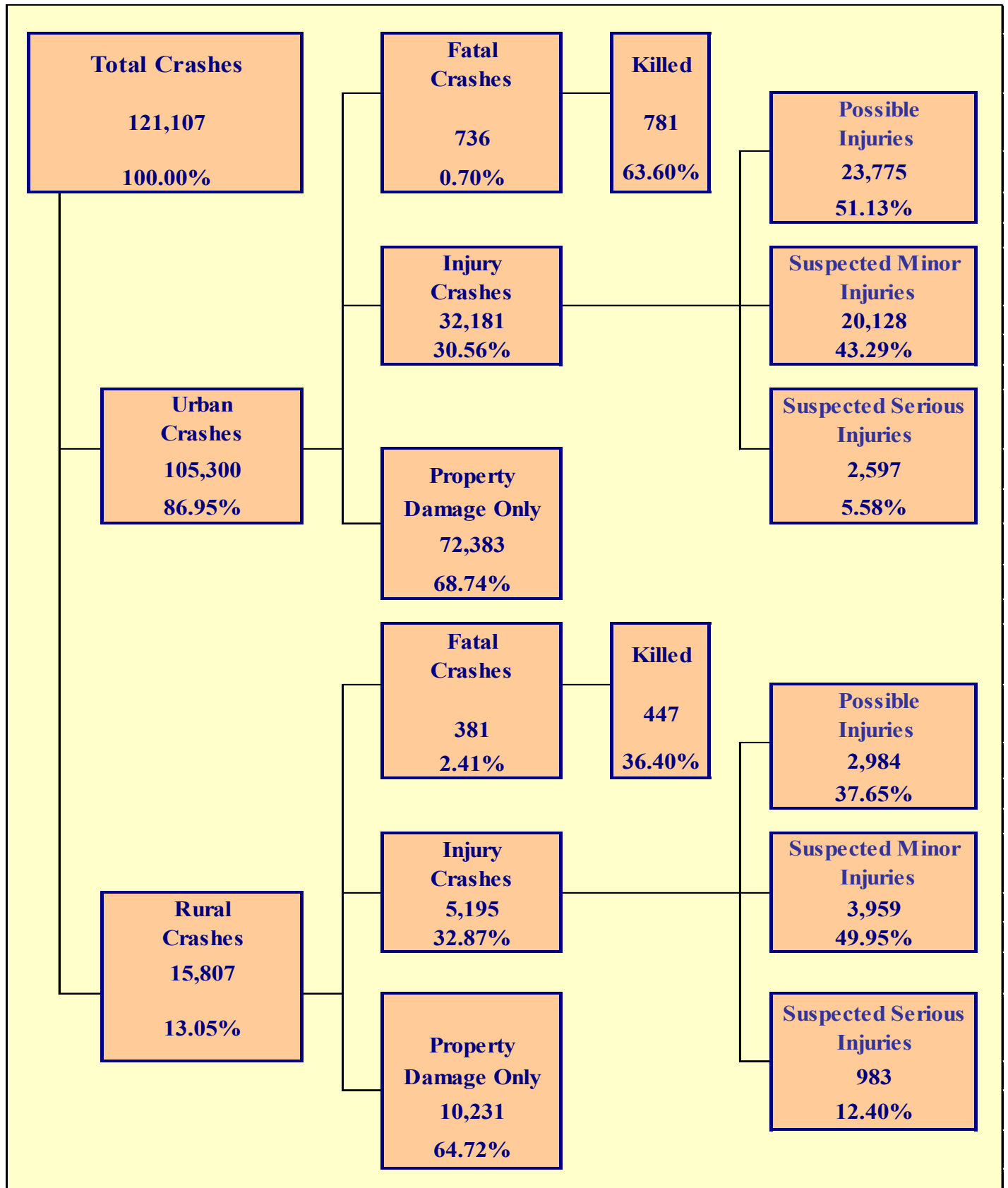
Fatal Crashes by Year	New Year's Day	Memorial Day	July 4th	Labor Day	Thanksgiving	Christmas Day	Total
2020	2	11	9	10	12	10	54
2021	10	10	7	14	15	12	68
2022	12	11	11	13	16	10	73
2023	14	14	6	15	14	9	72
2024	13	11	12	10	10	4	60

Persons Killed	New Year's Day	Memorial Day	July 4th	Labor Day	Thanksgiving	Christmas Day	Total
2020	2	11	9	10	12	14	58
2021	10	14	8	14	18	12	76
2022	14	11	12	13	16	10	76
2023	15	15	8	18	15	9	80
2024	13	14	15	10	10	4	66

Days Counted for Holiday Period	New Year's Day	Memorial Day	July 4th	Labor Day	Thanksgiving	Christmas Day	Total
2020	2	4	4	4	5	4	23
2021	4	4	4	4	5	4	25
2022	4	4	4	4	5	4	25
2023	4	4	2	4	5	4	23
2024	4	4	5	4	5	2	24

Section 2

Geographic Location



Section 2: – Geographic Location

Fatal Crashes in Arizona (1,117) accounted for 0.92% of all crashes, Injury Crashes (37,376) accounted for 30.86%, and Property Damage Only (PDO) Crashes (82,614) accounted for 68.22%.

Table 2 – 1
Crash Severity by First Harmful Event Statewide

First Harmful Event Type	Number of Crashes				Number of Persons	
	Total	Fatal	Injury	PDO	Killed	Injured
Collision with Motor Vehicle in Transport	94,571	458	27,936	66,177	534	43,304
Overturning	2,264	120	1,431	713	128	1,892
Collision with Pedestrian	2,011	249	1,762	0	252	1,888
Collision with Bicyclist	1,370	44	1,326	0	44	1,361
Collision with Animal	2,014	4	301	1,709	5	379
Collision with Fixed Object	12,120	193	3,609	8,318	212	4,369
Collision with Non-fixed Object*	6,288	18	974	5,296	20	1,188
Vehicle Fire or Explosion	395	2	22	371	2	27
Other Non-collision**	53	8	15	30	8	18
Unknown	21	21	0	0	23	0
TOTAL	121,107	1,117	37,376	82,614	1,228	54,426
*Includes Collision with Parked Vehicles, Trains, Railway Vehicles, and Work Zone Equipment						
**Includes Vehicle Immersion, Jackknife, and Cargo Loss or Shift						

Table 2 – 2
Crashes by County

County	Number of Crashes				Number of Persons	
	Total	Fatal	Injury	PDO	Killed	Injured
Apache	452	27	155	270	29	251
Cochise	1,301	25	397	879	34	582
Coconino	3,522	53	1,030	2,439	65	1,511
Gila	918	8	284	626	8	424
Graham	235	12	65	158	16	106
Greenlee	75	1	32	42	1	37
La Paz	433	20	139	274	29	209
Maricopa	88,094	560	25,990	61,544	594	37,649
Mohave	3,421	45	1,077	2,299	48	1,576
Navajo	1,192	30	367	795	35	555
Pima	8,867	168	3,469	5,230	182	5,089
Pinal	5,702	82	2,005	3,615	93	2,998
Santa Cruz	459	7	126	326	7	192
Yavapai	3,836	57	1,202	2,577	63	1,716
Yuma	2,600	22	1,038	1,540	24	1,531
TOTAL	121,107	1,117	37,376	82,614	1,228	54,426

Section 2: – Geographic Location

Table 2 – 3
Crash Severity by First Harmful Event in Urban Areas

First Harmful Event Type	Number of Crashes				Number of Persons	
	Total	Fatal	Injury	PDO	Killed	Injured
Collision with Motor Vehicle in Transport	86,861	320	25,327	61,214	348	38,732
Overtaking	805	31	562	212	34	675
Collision with Pedestrian	1,889	204	1,685	0	207	1,793
Collision with Bicyclist	1,317	37	1,280	0	37	1,312
Collision with Animal	394	1	51	342	1	61
Collision with Fixed Object	8,858	121	2,533	6,204	131	3,026
Collision with Non-fixed Object*	5,028	11	724	4,293	12	878
Vehicle Fire or Explosion	107	0	9	98	0	11
Other Non-collision**	32	2	10	20	2	12
Unknown	9	9	0	0	9	0
TOTAL	105,300	736	32,181	72,383	781	46,500
*Includes Collision with Parked Vehicles, Trains, Railway Vehicles, and Work Zone Equipment						
**Includes Vehicle Immersion, Jackknife, and Cargo Loss or Shift						

Table 2 – 4
Crash Severity by First Harmful Event in Rural Areas

First Harmful Event Type	Number of Crashes				Number of Persons	
	Total	Fatal	Injury	PDO	Killed	Injured
Collision with Motor Vehicle in Transport	7,710	138	2,609	4,963	186	4,572
Overtaking	1,459	89	869	501	94	1,217
Collision with Pedestrian	122	45	77	0	45	95
Collision with Bicyclist	53	7	46	0	7	49
Collision with Animal	1,620	3	250	1,367	4	318
Collision with Fixed Object	3,262	72	1,076	2,114	81	1,343
Collision with Non-fixed Object*	1,260	7	250	1,003	8	310
Vehicle Fire or Explosion	288	2	13	273	2	16
Other Non-collision**	21	6	5	10	6	6
Unknown	12	12	0	0	14	0
TOTAL	15,807	381	5,195	10,231	447	7,926
*Includes Collision with Parked Vehicles, Trains, Railway Vehicles, and Work Zone Equipment						
**Includes Vehicle Immersion, Jackknife, and Cargo Loss or Shift						

While Urban Crashes in Arizona (105,300) accounted for 86.95% of all crashes, they accounted for 65.89% of all Fatal Crashes (736) occurring in 2024.

While Rural Crashes in Arizona (15,807) accounted for 13.05% of all crashes, they accounted for 34.11% of all Fatal Crashes (381) occurring in 2024.

Section 2: – Geographic Location

Table 2 – 5

Analysis by Jurisdiction

COUNTIES Cities	Number of Crashes				No. of Persons		Alcohol Related		
	Total	Fatal	Injury	PDO	Killed	Injured	Crashes	Killed	Injured
Apache County	428	26	147	255	28	242	41	12	41
Eagar	1	0	0	1	0	0	0	0	0
Springerville	3	0	1	2	0	1	0	0	0
St. Johns	20	1	7	12	1	8	3	1	1
TOTAL	452	27	155	270	29	251	44	13	42

Cochise County	630	22	182	426	31	279	25	9	14
Benson	118	0	41	77	0	64	0	0	0
Bisbee	5	0	2	3	0	4	1	0	0
Douglas	90	2	18	70	2	20	5	1	2
Huachuca City	13	0	0	13	0	0	1	0	0
Sierra Vista	402	0	150	252	0	211	21	0	20
Tombstone	6	1	1	4	1	1	0	0	0
Willcox	37	0	3	34	0	3	0	0	0
TOTAL	1,301	25	397	879	34	582	53	10	36

Coconino County	1,478	45	455	978	56	721	91	9	75
Flagstaff	1,720	6	496	1,218	6	685	79	1	53
Fredonia	3	1	0	2	1	0	0	0	0
Williams	118	0	26	92	0	33	6	0	3
Page	100	1	31	68	2	47	19	2	14
Sedona	103	0	22	81	0	25	6	0	3
TOTAL	3,522	53	1,030	2,439	65	1,511	201	12	148

Gila County	527	6	164	357	6	237	34	6	29
Globe	148	0	49	99	0	74	9	0	9
Hayden	0	0	0	0	0	0	0	0	0
Miami	17	0	5	12	0	11	1	0	0
Payson	226	2	66	158	2	102	13	0	9
Winkelman	0	0	0	0	0	0	0	0	0
TOTAL	918	8	284	626	8	424	57	6	47

Graham County	161	11	49	101	15	80	16	6	10
Pima	4	0	1	3	0	1	0	0	0
Safford	35	0	6	29	0	11	2	0	0
Thatcher	35	1	9	25	1	14	6	1	5
TOTAL	235	12	65	158	16	106	24	7	15

Greenlee County	69	1	29	39	1	34	9	0	5
Clifton	3	0	3	0	0	3	1	0	1
Duncan	3	0	0	3	0	0	0	0	0
TOTAL	75	1	32	42	1	37	10	0	6

Section 2: – Geographic Location

Table 2 – 5

Analysis by Jurisdiction

COUNTIES Cities	Number of Crashes				No. of Persons		Alcohol Related		
	Total	Fatal	Injury	PDO	Killed	Injured	Crashes	Killed	Injured
La Paz County	323	13	109	201	20	160	15	3	3
Parker	34	2	10	22	2	14	2	1	1
Quartzite	76	5	20	51	7	35	5	0	1
TOTAL	433	20	139	274	29	209	22	4	5

Maricopa County	7,412	76	2,445	4,891	82	3,613	317	32	212
Apache Junction	26	0	13	13	0	24	0	0	0
Avondale	1,850	7	510	1,333	9	745	66	4	41
Buckeye	970	7	345	618	7	572	49	0	44
Cave Creek	57	0	20	37	0	31	2	0	0
Chandler	4,267	14	1,263	2,990	15	1,856	181	8	98
El Mirage	347	4	127	216	4	190	23	0	18
Gila Bend	65	0	15	50	0	17	2	0	1
Gilbert	2,914	21	695	2,198	22	951	123	3	48
Glendale	5,218	27	1,456	3,735	29	2,064	224	7	104
Goodyear	1,869	14	594	1,261	14	862	72	4	44
Mesa	8,022	46	2,503	5,473	48	3,531	356	8	224
Paradise Valley	90	1	14	75	2	16	5	0	0
Peoria	3,009	18	1,040	1,951	21	1,502	119	5	48
Phoenix	37,472	265	10,449	26,758	278	15,057	1,351	95	822
Scottsdale	4,219	15	1,421	2,783	15	2,113	226	6	128
Surprise	2,110	10	573	1,527	10	856	84	2	71
Tempe	6,637	29	2,049	4,559	32	3,007	295	5	225
Tolleson	486	3	141	342	3	211	15	0	13
Wickenburg	114	0	29	85	0	42	3	0	2
Youngtown	48	1	11	36	1	12	2	0	1
Guadalupe	145	0	56	89	0	78	9	0	4
Litchfield Park	40	1	11	28	1	14	4	0	3
Queen Creek	533	0	158	375	0	224	10	0	5
Fountain Hills	135	0	36	99	0	42	2	0	0
Carefree	39	1	16	22	1	19	4	1	1
TOTAL	88,094	560	25,990	61,544	594	37,649	3,544	180	2,157

Mohave County	1,503	30	519	954	33	786	107	3	103
Kingman	660	3	176	481	3	249	26	0	16
Lake Havasu City	626	5	188	433	5	237	64	1	40
Bullhead City	631	6	194	431	6	304	43	2	31
Colorado City	1	1	0	0	1	0	0	0	0
TOTAL	3,421	45	1,077	2,299	48	1,576	240	6	190

Crashes in Maricopa County accounted for 72.74% of all crashes and 50.13% of fatal crashes.

Section 2: – Geographic Location

Table 2 – 5

Analysis by Jurisdiction

COUNTIES Cities	Number of Crashes				No. of Persons		Alcohol Related		
	Total	Fatal	Injury	PDO	Killed	Injured	Crashes	Killed	Injured
Navajo County	625	20	207	398	21	308	45	5	47
Holbrook	55	2	19	34	2	29	3	0	1
Show Low	276	4	77	195	6	119	12	1	8
Snowflake	42	1	9	32	1	10	3	0	1
Taylor	40	0	14	26	0	20	3	0	4
Winslow	63	2	12	49	4	24	7	0	6
Pinetop-Lakeside	91	1	29	61	1	45	2	0	4
TOTAL	1,192	30	367	795	35	555	75	6	71
Pima County	1,303	66	427	810	77	746	80	26	67
South Tucson	16	0	3	13	0	3	0	0	0
Tucson	5,977	93	2,571	3,313	96	3,644	387	23	259
Sahuarita	228	1	75	152	1	117	8	0	8
Oro Valley	395	1	149	245	1	227	19	0	17
Marana	948	7	244	697	7	352	42	2	31
TOTAL	8,867	168	3,469	5,230	182	5,089	536	51	382
Pinal County	3,047	47	1,055	1,945	55	1,567	177	17	130
Casa Grande	1,083	11	337	735	11	472	62	4	41
Chandler	1	1	0	0	3	0	1	3	0
Coolidge	243	4	94	145	4	145	18	1	11
Eloy	149	4	48	97	5	87	9	1	6
Florence	121	1	52	68	1	73	9	0	6
Kearny	7	0	2	5	0	2	0	0	0
Mammoth	3	0	1	2	0	1	0	0	0
Queen Creek	46	0	11	35	0	15	1	0	1
Superior	11	1	4	6	1	6	1	0	1
Apache Junction	463	9	199	255	9	314	39	6	36
Maricopa	528	4	202	322	4	316	30	2	22
TOTAL	5,702	82	2,005	3,615	93	2,998	347	34	254
Santa Cruz County	255	6	67	182	6	98	11	2	10
Nogales	202	1	58	143	1	93	3	0	3
Patagonia	2	0	1	1	0	1	0	0	0
TOTAL	459	7	126	326	7	192	14	2	13
Yavapai County	1,835	44	580	1,211	48	845	106	10	87
Clarkdale	20	0	5	15	0	5	1	0	0
Cottonwood	294	1	89	204	1	124	18	0	6
Jerome	6	0	0	6	0	0	0	0	0
Peoria	1	0	1	0	0	2	0	0	0
Prescott	623	3	192	428	4	244	29	0	12
Prescott Valley	532	3	174	355	3	248	30	1	25
Chino Valley	188	3	70	115	4	108	13	0	4
Camp Verde	168	2	49	117	2	80	9	0	5
Dewey-Humboldt	29	0	5	24	0	8	2	0	1
Sedona	126	1	33	92	1	45	5	0	3
Wickenburg	14	0	4	10	0	7	0	0	0
TOTAL	3,836	57	1,202	2,577	63	1,716	213	11	143

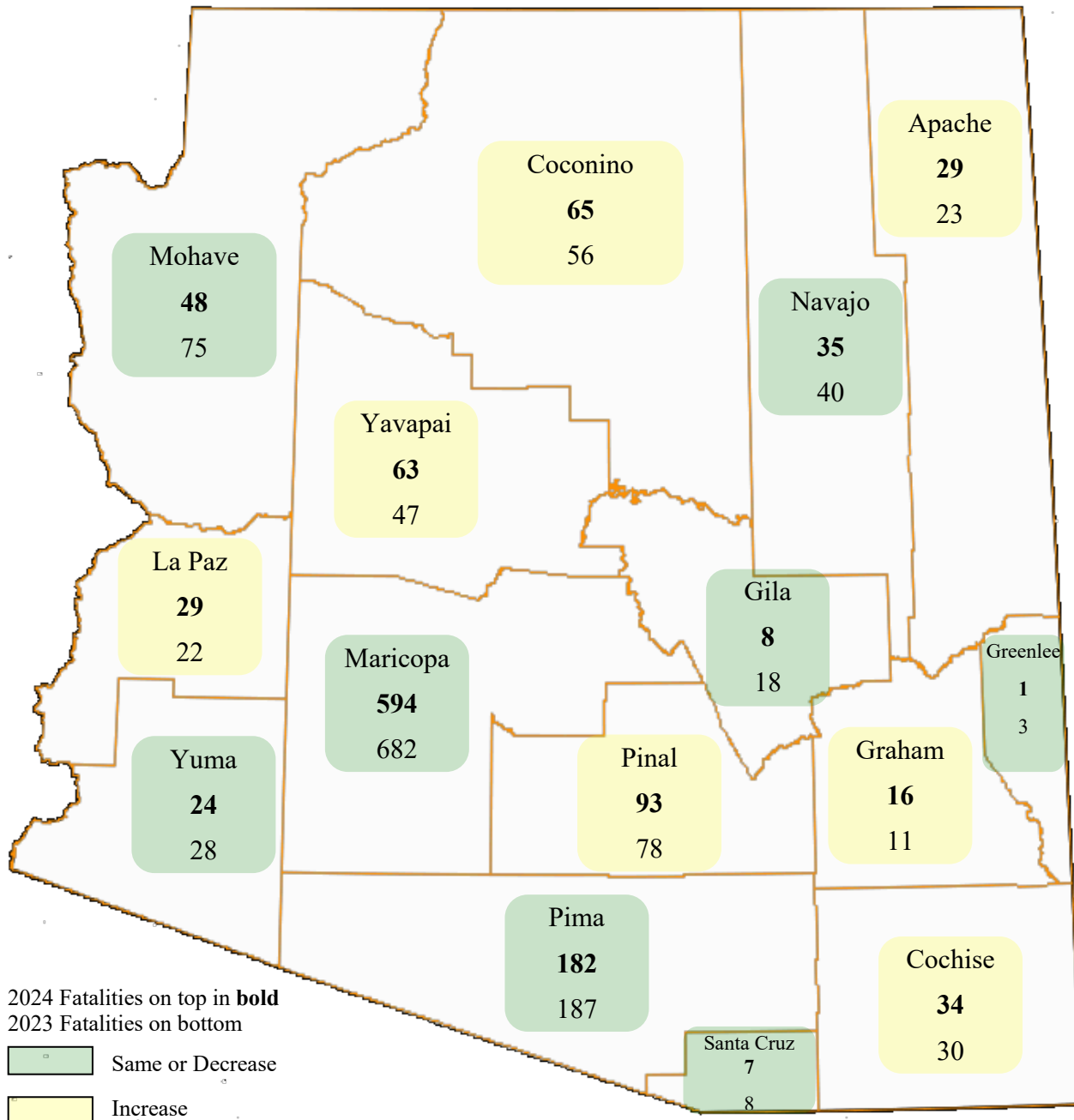
Section 2: – Geographic Location

Table 2 – 5
Analysis by Jurisdiction

COUNTIES Cities	Number of Crashes				No. of Persons		Alcohol Related		
	Total	Fatal	Injury	PDO	Killed	Injured	Crashes	Killed	Injured
Yuma County	761	14	275	472	15	419	39	1	14
Somerton	54	0	18	36	0	27	5	0	2
Yuma	1,536	7	677	852	8	991	87	4	50
Wellton	17	1	5	11	1	6	1	0	1
San Luis	232	0	63	169	0	88	8	0	0
TOTAL	2,600	22	1,038	1,540	24	1,531	140	5	67

Note: Some individual city data may be incomplete due to lack of timely reporting or changes in crash reporting procedures.

Total Fatalities by County for 2023 and 2024



Section 2: – Geographic Location

Chart 2 – 1

Urban and Rural Crashes by Day of Week

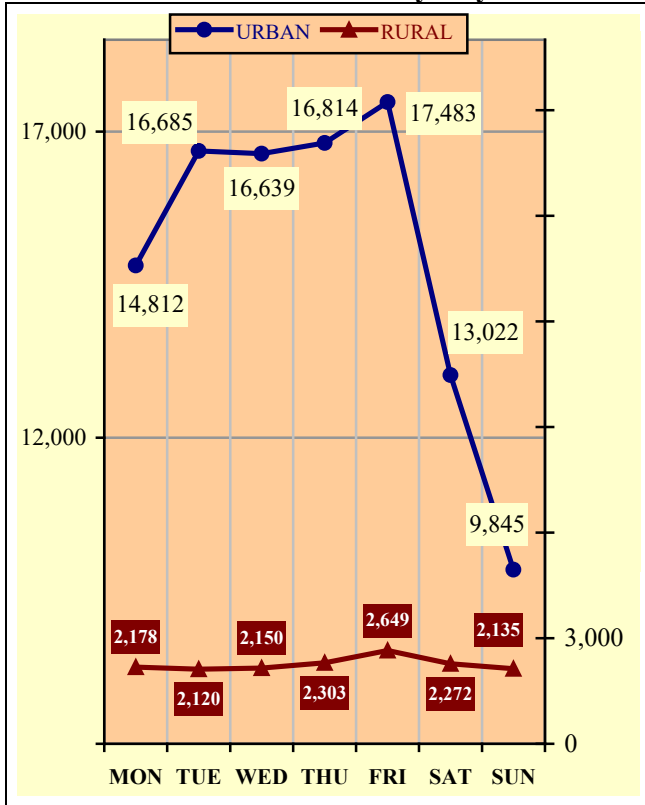


Chart 2 – 2

Urban and Rural Fatal Crashes by Day of Week

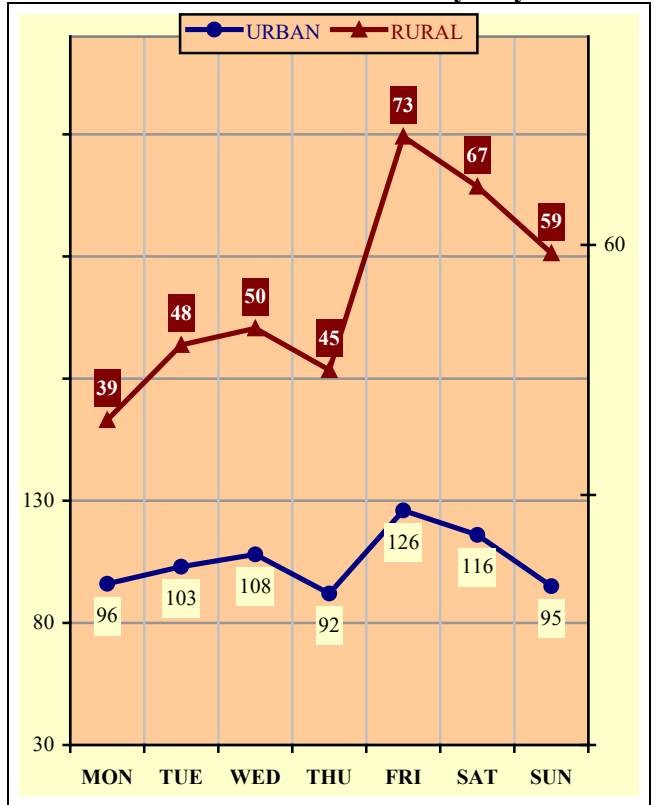
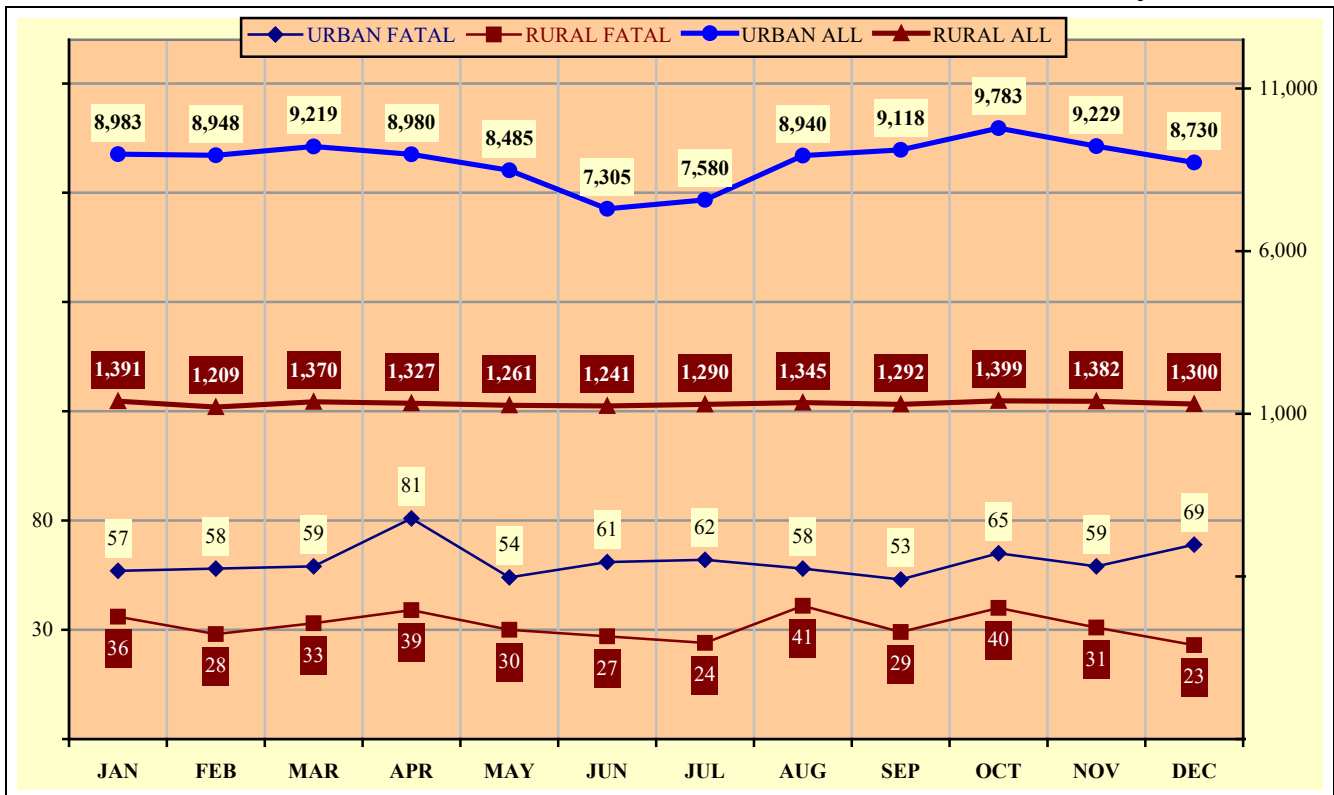


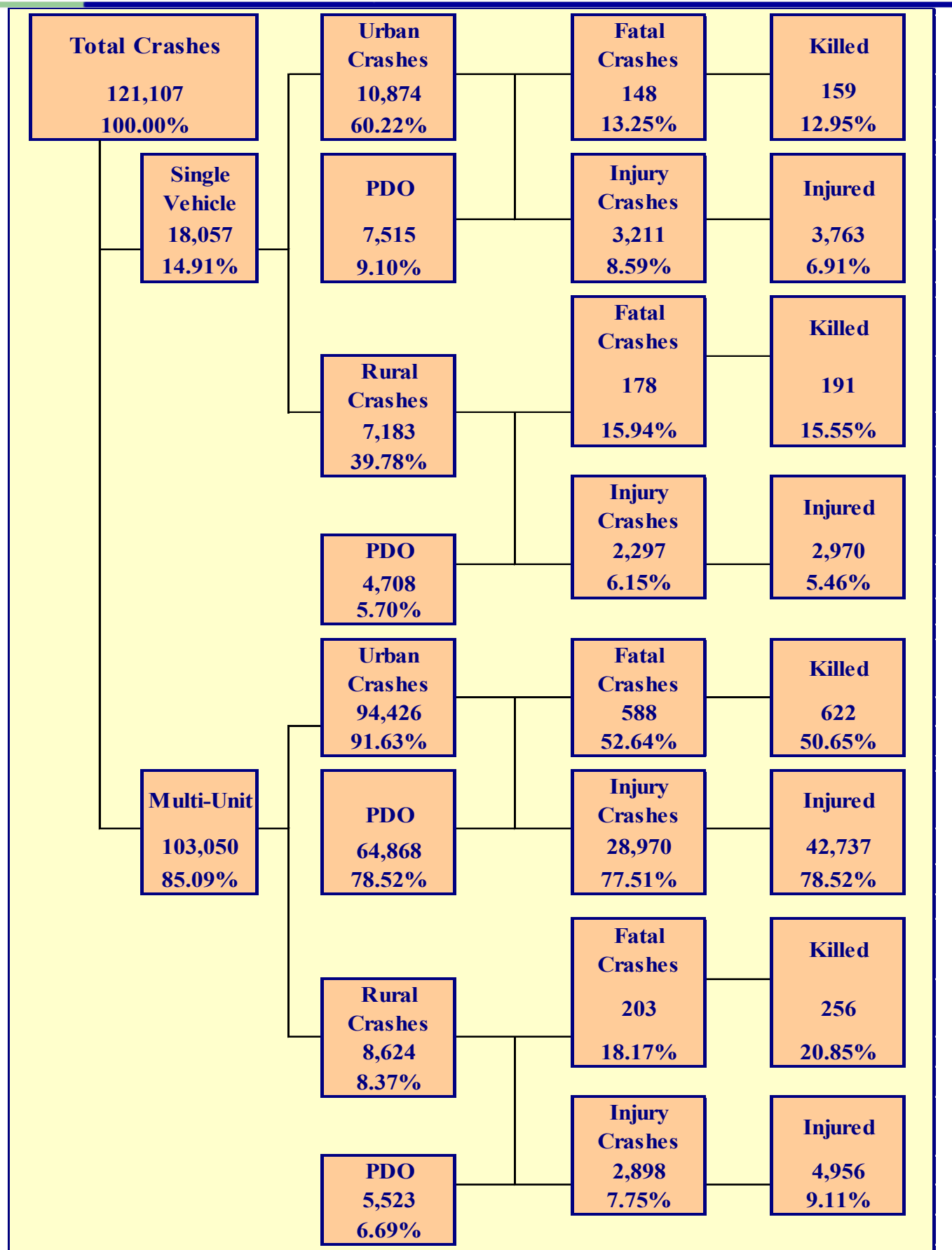
Chart 2 – 3

All Urban and Rural Crashes vs. Urban and Rural Fatal Crashes by Month



Section 3

Crash Descriptions



Section 3: – Crash Descriptions

Table 3 – 1
Manner of Collision in Multi-Unit Crashes

Manner of Collision Type	Number of Crashes							
	Total	Percent of Total Crashes	Fatal	Percent of Fatal Crashes	Injury	Percent of Injury Crashes	PDO	Percent of PDO Crashes
Angle	18,182	17.64%	96	12.14%	6,371	19.99%	11,715	16.64%
Left Turn	16,866	16.37%	127	16.06%	6,438	20.20%	10,301	14.63%
Rear End	38,654	37.51%	91	11.50%	12,221	38.35%	26,342	37.42%
Head-On	2,023	1.96%	83	10.49%	919	2.88%	1,021	1.45%
Sideswipe (same)	19,208	18.64%	34	4.30%	2,534	7.95%	16,640	23.64%
Sideswipe (opposite)	1,639	1.59%	10	1.26%	386	1.21%	1,243	1.77%
U-Turn	983	0.95%	8	1.01%	251	0.79%	724	1.03%
Other*	5,022	4.87%	331	41.85%	2,639	8.28%	2,052	2.92%
Unknown	473	0.46%	11	1.39%	109	0.34%	353	0.50%
TOTAL	103,050	100.00%	791	100.00%	31,868	100.00%	70,391	100.00%

*Other includes pedestrian and bicycle crashes

Table 3 – 2
Lighting Conditions

Type of Lighting Conditions	Number of Crashes				Number of Persons	
	Total	Fatal	Injury	PDO	Killed	Injured
Daylight	84,206	485	25,822	57,899	550	37,513
Dawn	2,228	16	693	1,519	16	970
Dusk	3,411	21	1,097	2,293	21	1,618
Dark - Lighted	23,670	329	7,494	15,847	345	11,029
Dark - Not Lighted	6,790	177	2,134	4,479	201	3,118
Dark - Unknown Lighting	350	39	78	233	39	102
Unknown	452	50	58	344	56	76
TOTAL	121,107	1,117	37,376	82,614	1,228	54,426

Table 3 – 3
Weather Conditions

Type of Weather Conditions	Number of Crashes				Number of Persons	
	Total	Fatal	Injury	PDO	Killed	Injured
Clear	109,161	885	33,680	74,596	980	48,882
Cloudy	7,635	87	2,497	5,051	90	3,717
Sleet/Hail	210	2	73	135	2	128
Rain	2,834	22	851	1,961	24	1,282
Snow or Blowing Snow	541	2	134	405	4	214
Blowing Sand, Soil, Dirt	77	0	26	51	0	34
Fog, Smog, Smoke	50	1	18	31	1	32
Other	65	0	20	45	0	24
Unknown	534	118	77	339	127	113
TOTAL	121,107	1,117	37,376	82,614	1,228	54,426

Section 3: – Crash Descriptions

Table 3 – 4

Road Surface Conditions

Type of Road Surface Condition	Number of Drivers				Number of Persons	
	Total	In Fatal Crashes	In Injury Crashes	In PDO Crashes	Killed	Injured
Dry	224,479	1,610	70,290	152,579	1,053	51,848
Wet	6,797	37	2,142	4,618	29	1,748
Snow/Slush	961	4	280	677	3	264
Ice/Frost	548	11	150	387	3	143
Water (standing or moving)	103	3	32	68	2	41
Mud, Dirt, Gravel, Sand	501	12	211	278	12	259
Other	54	1	18	35	0	19
Unknown	2,750	138	499	2,113	126	104
TOTAL	236,193	1,816	73,622	160,755	1,228	54,426

Table 3 – 5

Roadway Grade

Type of Roadway Grade	Number of Drivers				Number of Persons	
	Total	In Fatal Crashes	In Injury Crashes	In PDO Crashes	Killed	Injured
Level	221,752	1,449	69,017	151,286	947	50,651
Downhill	6,383	124	2,246	4,013	94	2,074
Uphill	5,450	99	1,872	3,479	56	1,604
Unknown	2,608	144	487	1,977	131	97
TOTAL	236,193	1,816	73,622	160,755	1,228	54,426

Table 3 – 6

Roadway Alignment

Type of Roadway Alignment	Number of Drivers				Number of Persons	
	Total	In Fatal Crashes	In Injury Crashes	In PDO Crashes	Killed	Injured
Straight	221,303	1,487	69,467	150,349	942	50,909
Curve Left	6,191	111	1,827	4,253	90	1,741
Curve Right	5,927	91	1,814	4,022	81	1,652
Unknown	2,772	127	514	2,131	115	124
TOTAL	236,193	1,816	73,622	160,755	1,228	54,426

Section 3: – Crash Descriptions

Chart 3 – 1

All Crashes vs. Fatal Crashes by Time of Day - Weekdays

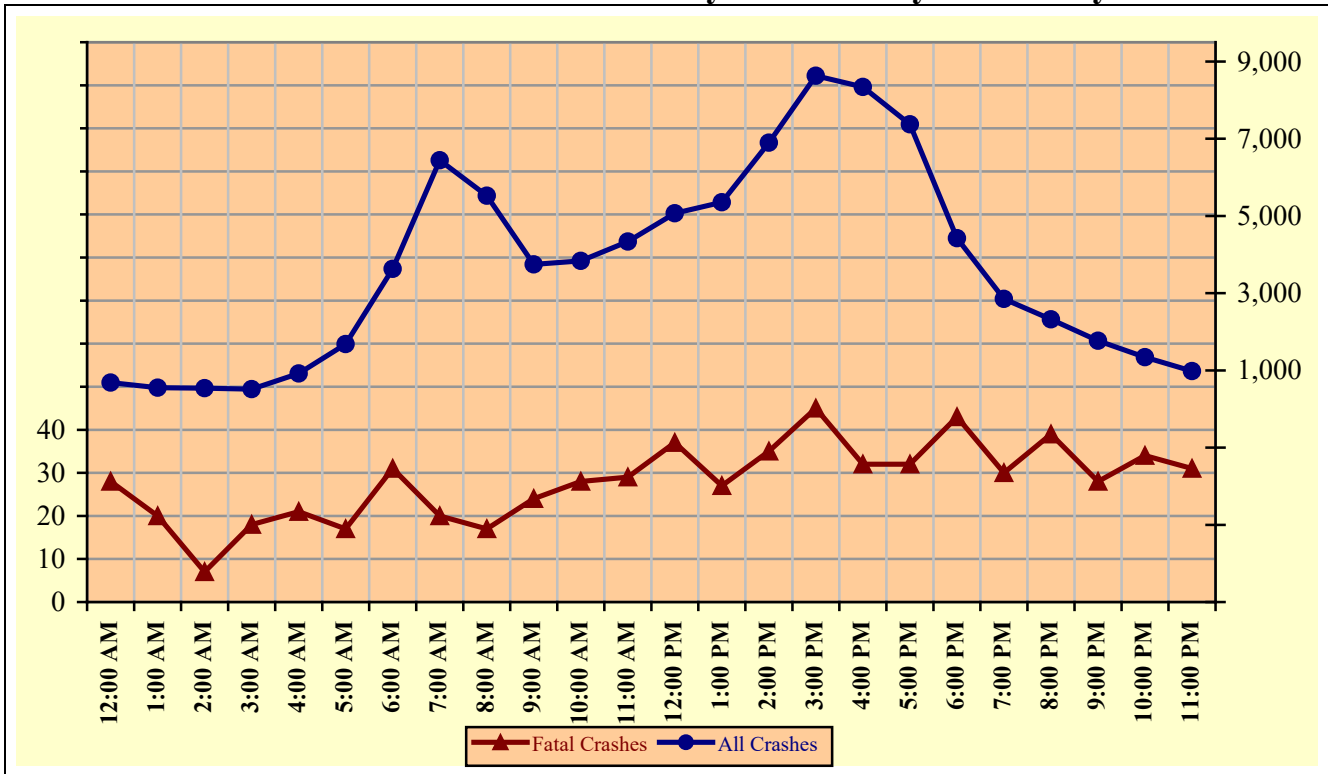
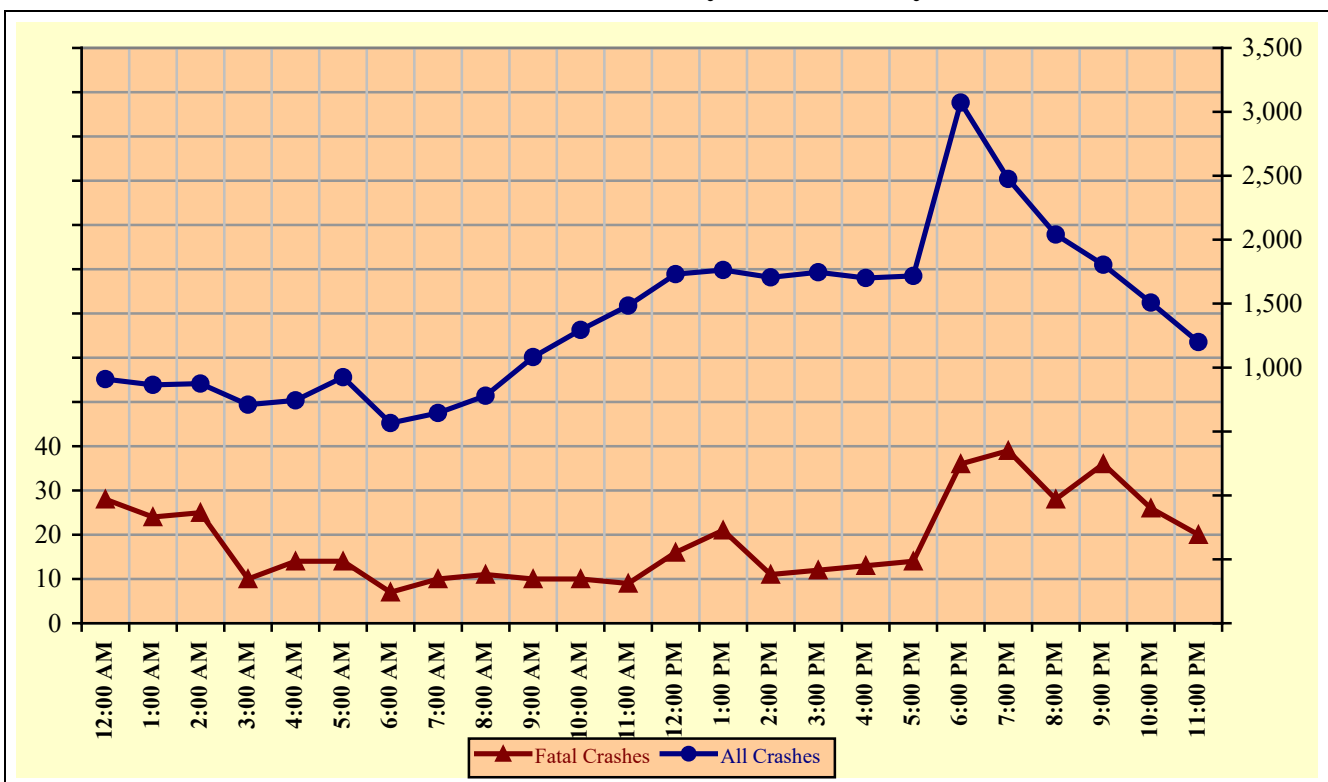


Chart 3 – 2

All Crashes vs. Fatal Crashes by Time of Day - Weekends



Section 3: – Crash Descriptions

Chart 3 – 3
Crashes by Day of Week

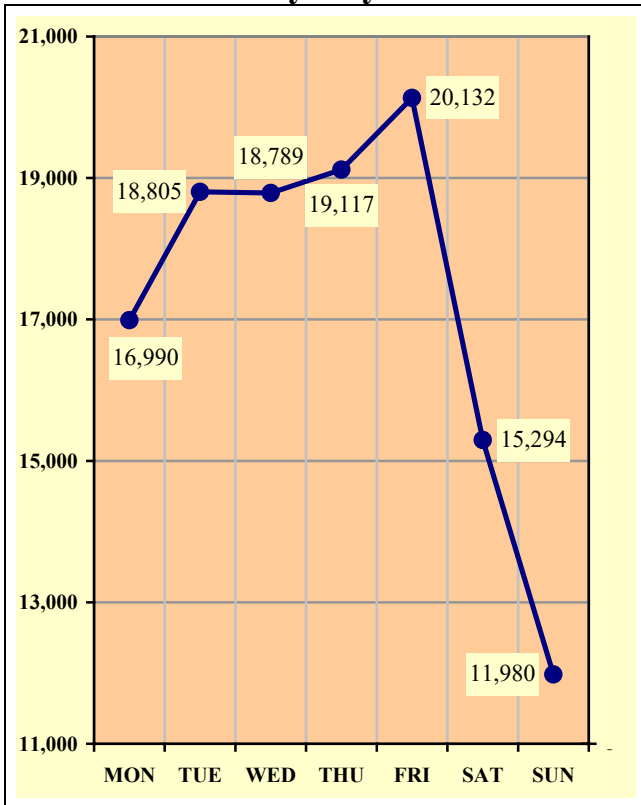


Chart 3 – 4
Fatal Crashes by Day of Week

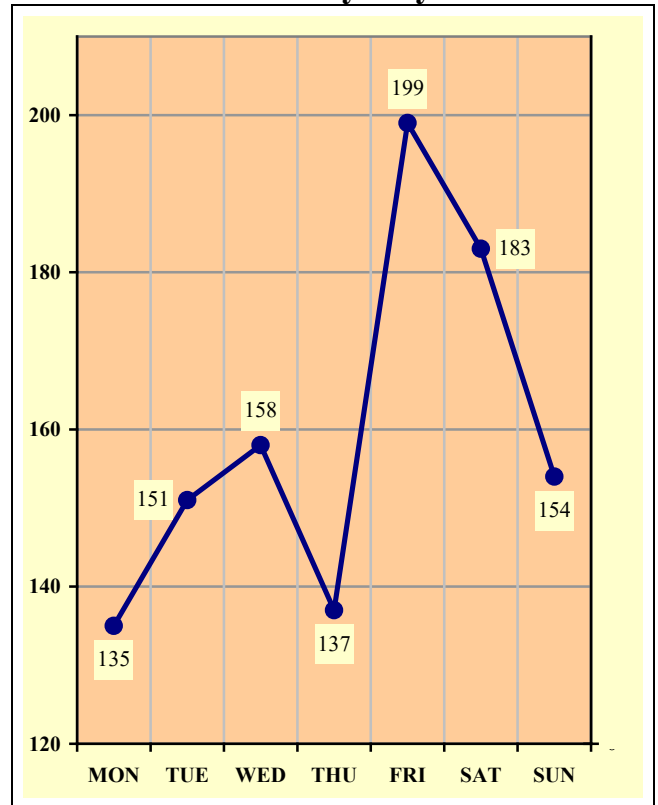
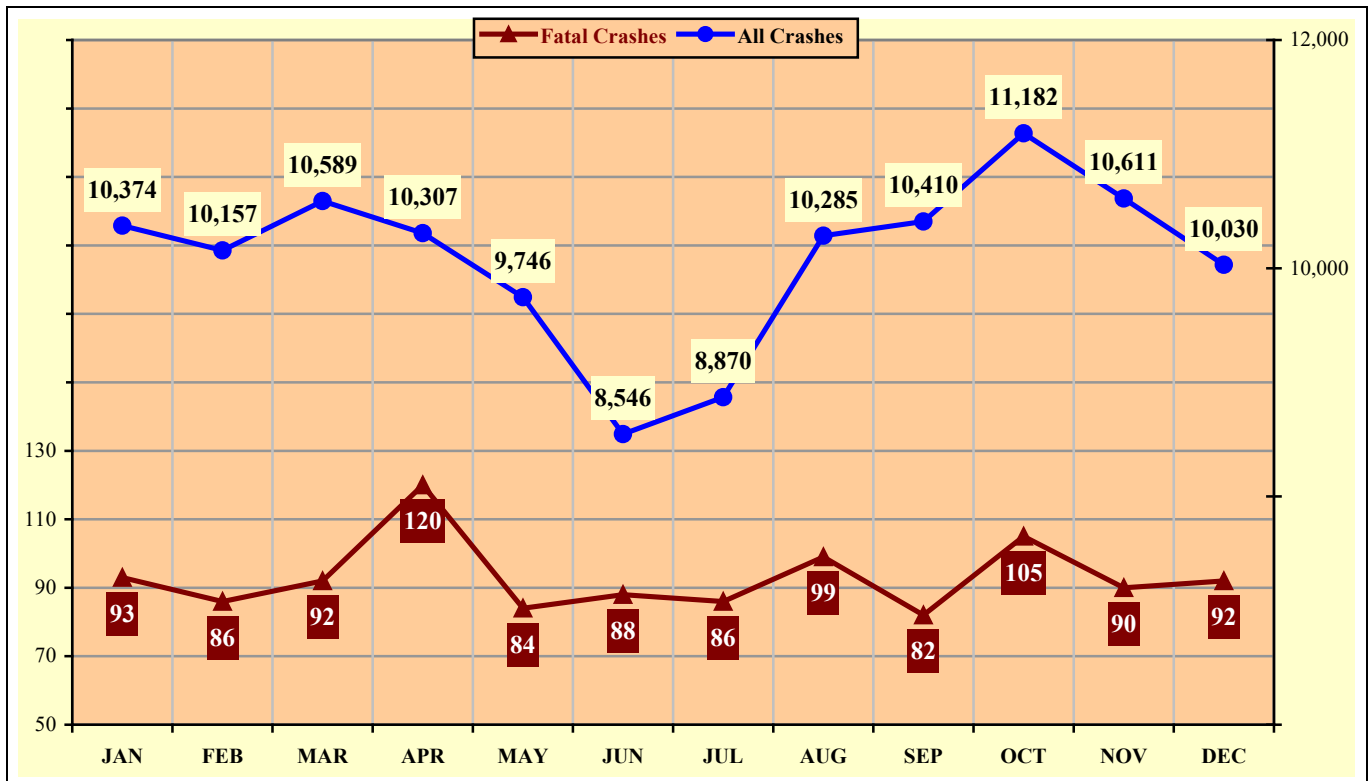


Chart 3 – 5
All Crashes vs. Fatal Crashes by Month

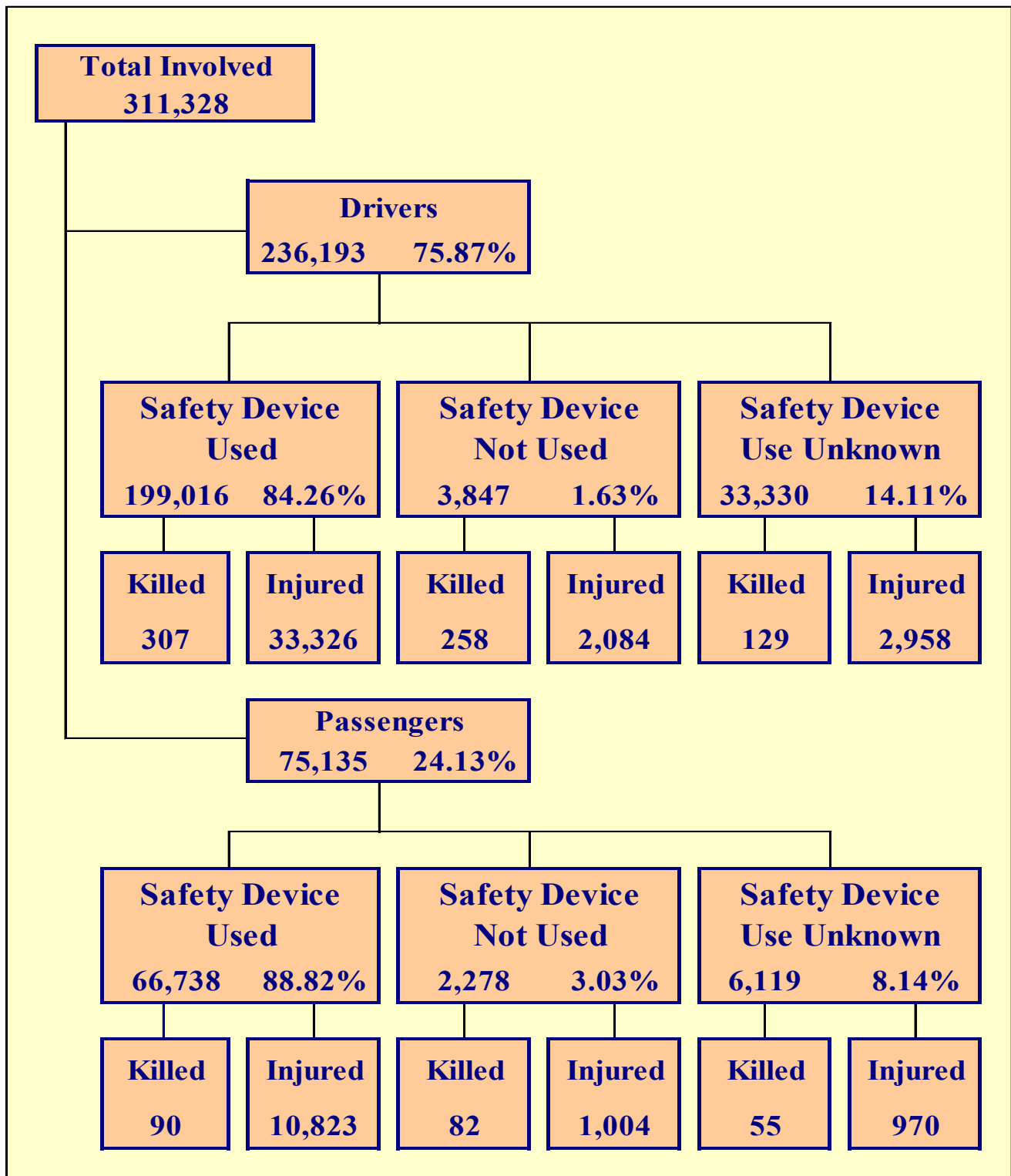


Section 3: – Crash Descriptions

Table 3 – 7
Crashes by Hour and Day of Week

Hour Beginning	Total Crashes		Monday		Tuesday		Wednesday		Thursday		Friday		Saturday		Sunday		Weekdays		Weekends	
	All	Fatal	All	Fatal	All	Fatal	All	Fatal	All	Fatal	All	Fatal	All	Fatal	All	Fatal	All	Fatal	All	Fatal
12:00 AM	1,596	56	188	3	136	6	155	8	173	5	222	9	345	11	377	14	686	28	910	28
1:00 AM	1,417	44	188	6	122	5	121	4	156	6	153	5	303	8	374	10	552	20	865	24
2:00 AM	1,415	32	156	7	105	0	127	3	127	2	182	2	333	8	385	10	541	7	874	25
3:00 AM	1,223	28	149	4	123	6	126	1	115	4	149	7	277	3	284	3	513	18	710	10
4:00 AM	1,664	35	229	3	223	3	220	3	239	6	239	9	244	3	270	8	921	21	743	14
5:00 AM	2,606	31	432	5	417	6	437	2	428	4	400	5	258	6	234	3	1,682	17	924	14
6:00 AM	4,196	38	645	6	829	6	795	10	747	4	614	5	306	4	260	3	3,630	31	566	7
7:00 AM	7,086	30	1,102	6	1,470	3	1,449	2	1,371	4	1,049	5	391	5	254	5	6,441	20	645	10
8:00 AM	6,303	28	1,029	4	1,226	6	1,177	2	1,140	3	952	2	436	6	343	5	5,524	17	779	11
9:00 AM	4,829	34	670	3	794	4	788	7	738	7	757	3	665	9	417	1	3,747	24	1,082	10
10:00 AM	5,132	38	730	8	762	2	683	6	811	3	852	9	754	5	540	5	3,838	28	1,294	10
11:00 AM	5,821	38	797	4	858	7	886	8	869	3	927	7	872	6	612	3	4,337	29	1,484	9
12:00 PM	6,802	53	920	2	920	9	1,044	8	963	9	1,224	9	982	10	749	6	5,071	37	1,731	16
1:00 PM	7,116	48	977	6	971	2	1,108	6	1,066	8	1,231	5	984	12	779	9	5,353	27	1,763	21
2:00 PM	8,602	46	1,229	7	1,366	7	1,381	5	1,359	4	1,562	12	945	5	760	6	6,897	35	1,705	11
3:00 PM	10,377	57	1,638	7	1,775	7	1,650	12	1,798	8	1,770	11	989	7	757	5	8,631	45	1,746	12
4:00 PM	10,041	45	1,494	7	1,777	7	1,626	6	1,775	3	1,669	9	960	4	740	9	8,341	32	1,700	13
5:00 PM	9,091	46	1,297	7	1,587	7	1,482	6	1,549	6	1,459	6	949	10	768	4	7,374	32	1,717	14
6:00 PM	7,498	79	984	11	1,126	10	1,190	10	1,126	12	1,307	12	993	14	772	10	4,426	43	3,072	36
7:00 PM	5,326	69	680	5	699	11	741	8	731	6	994	19	836	14	645	6	2,851	30	2,475	39
8:00 PM	4,361	67	520	8	543	15	602	8	656	8	776	18	707	4	557	6	2,321	39	2,040	28
9:00 PM	3,573	64	405	2	434	8	438	12	492	6	645	14	659	10	500	12	1,769	28	1,804	36
10:00 PM	2,850	60	312	6	312	9	313	8	405	11	557	10	605	8	346	8	1,342	34	1,508	26
11:00 PM	2,182	51	219	8	230	5	250	13	283	5	442	6	501	11	257	3	982	31	1,200	20
TOTAL	121,107	1,117	16,990	135	18,805	151	18,789	158	19,117	137	20,132	199	15,294	183	11,980	154	87,770	673	33,337	444

Crashes during Weekends accounted for 27.53% of all crashes and 39.75% of Fatal Crashes.



Section 4: – Safety Devices

Table 4 – 1
Child Safety Device Usage (less than five years old)

Severity of Injury	Safety Device Used	Percent of Safety Device Used	Safety Device Not Used	Percent of Safety Device Not Used	Safety Device Use Unknown	Percent of Unknown
No Injury	7,242	87.88%	79	59.85%	199	77.13%
Unknown Injury	236	2.86%	3	2.27%	25	9.69%
Possible Injury	478	5.80%	21	15.91%	16	6.20%
Suspected Minor Injury	264	3.20%	16	12.12%	13	5.04%
Suspected Serious Injury	16	0.19%	10	7.58%	4	1.55%
Fatal Injury	5	0.06%	3	2.27%	1	0.39%
TOTALS	8,241	100.00%	132	100.00%	258	100.00%

Table 4 – 2
Driver Safety Device Usage

Severity of Injury	Safety Device Used	Percent of Safety Device Used	Safety Device Not Used	Percent of Safety Device Not Used	Safety Device Use Unknown	Percent of Unknown
No Injury	161,483	81.14%	1,404	36.50%	17,406	52.22%
Unknown Injury	3,900	1.96%	101	2.63%	12,837	38.51%
Possible Injury	17,399	8.74%	536	13.93%	1,138	3.41%
Suspected Minor Injury	14,569	7.32%	1,062	27.61%	1,401	4.20%
Suspected Serious Injury	1,358	0.68%	486	12.63%	419	1.26%
Fatal Injury	307	0.15%	258	6.71%	129	0.39%
TOTALS	199,016	100.00%	3,847	100.00%	33,330	100.00%

Table 4 – 3
Passenger Safety Device Usage

Severity of Injury	Safety Device Used	Percent of Safety Device Used	Safety Device Not Used	Percent of Safety Device Not Used	Safety Device Use Unknown	Percent of Unknown
No Injury	54,251	81.29%	1,158	50.83%	4,320	70.60%
Unknown Injury	1,574	2.36%	34	1.49%	774	12.65%
Possible Injury	6,193	9.28%	280	12.29%	444	7.26%
Suspected Minor Injury	4,251	6.37%	491	21.55%	416	6.80%
Suspected Serious Injury	379	0.57%	233	10.23%	110	1.80%
Fatal Injury	90	0.13%	82	3.60%	55	0.90%
TOTALS	66,738	100.00%	2,278	100.00%	6,119	100.00%

Section 4: – Safety Devices

Table 4 – 4
Driver Safety Device Usage by Gender

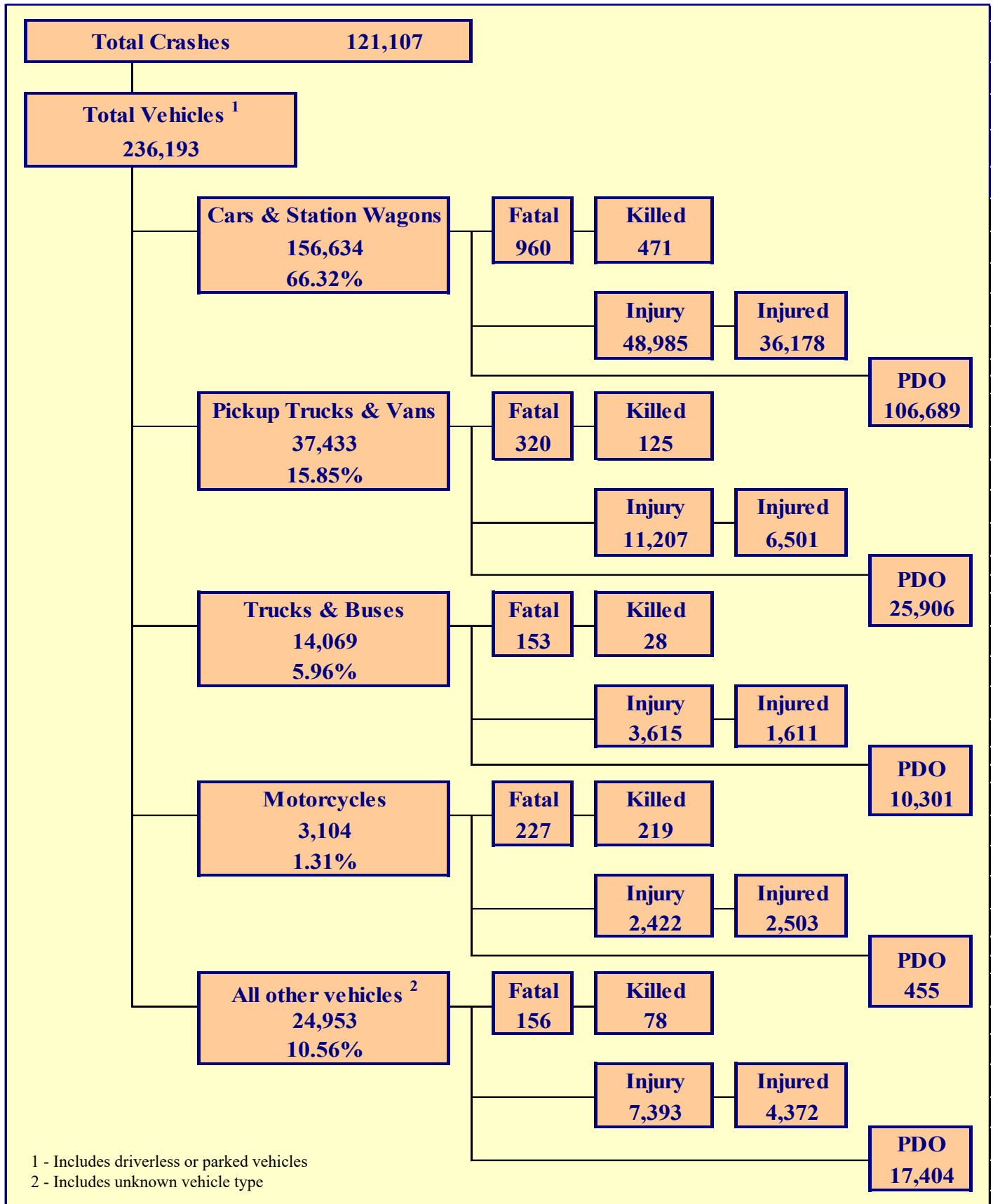
Gender of Driver	Number of Drivers							Percent of Total
	Safety Device Used	Percent of Safety Device Used	Safety Device Not Used	Percent of Safety Device Not Used	Safety Device Use Unknown	Percent of Unknown	Total	
Male	117,473	59.03%	2,763	71.82%	11,431	34.30%	131,667	55.75%
Female	81,391	40.90%	1,041	27.06%	5,558	16.68%	87,990	37.25%
Unknown	152	0.08%	43	1.12%	16,341	49.03%	16,536	7.00%
TOTAL	199,016	100.00%	3,847	100.00%	33,330	100.00%	236,193	100.00%

Table 4 – 5
Driver Safety Device Usage by Age

Driver Age Group	Number of Drivers							Percent of Total
	Safety Device Used	Percent of Safety Device Used	Safety Device Not Used	Percent of Safety Device Not Used	Safety Device Use Unknown	Percent of Unknown	Total	
15 & Under	303	0.15%	39	1.01%	74	0.22%	416	0.18%
16	3,288	1.65%	49	1.27%	221	0.66%	3,558	1.51%
17	4,497	2.26%	89	2.31%	268	0.80%	4,854	2.06%
18	5,481	2.75%	126	3.28%	362	1.09%	5,969	2.53%
19	5,665	2.85%	118	3.07%	375	1.13%	6,158	2.61%
20	5,605	2.82%	110	2.86%	425	1.28%	6,140	2.60%
21	5,574	2.80%	121	3.15%	436	1.31%	6,131	2.60%
22	5,338	2.68%	121	3.15%	403	1.21%	5,862	2.48%
23	5,330	2.68%	124	3.22%	425	1.28%	5,879	2.49%
24	5,191	2.61%	110	2.86%	417	1.25%	5,718	2.42%
25-34	45,146	22.68%	955	24.82%	3,645	10.94%	49,746	21.06%
35-44	35,018	17.60%	661	17.18%	2,864	8.59%	38,543	16.32%
45-54	27,156	13.65%	459	11.93%	2,059	6.18%	29,674	12.56%
55-64	22,242	11.18%	358	9.31%	1,556	4.67%	24,156	10.23%
65-74	14,183	7.13%	218	5.67%	966	2.90%	15,367	6.51%
75 & Older	8,418	4.23%	109	2.83%	543	1.63%	9,070	3.84%
Unknown	581	0.29%	80	2.08%	18,291	54.88%	18,952	8.02%
TOTAL	199,016	100.00%	3,847	100.00%	33,330	100.00%	236,193	100.00%

Section 5

Motor Vehicle and Driver Descriptions



Section 5: – Motor Vehicle and Driver Descriptions

Table 5 – 1

Arizona Motor Vehicle Registrations

Privately Owned Vehicles	5,631,766
Commercial Vehicles	594,538
Motorcycles	279,697
Mopeds	183
Other	197,815
TOTAL	6,703,999
Source: MVD - Currently Registered Vehicles by County Listing, dated 12/31/2024.	

Table 5 – 2

Motor Vehicle Crash Involvement by Vehicle Type

Motor Vehicle Type	Number of Vehicles				
	Total	Percent of Total	In Fatal Crashes	In Injury Crashes	In PDO Crashes
Passenger Cars (Sedans, Convertibles, etc.)	100,010	42.342%	526	30,642	68,842
Station Wagons	56,624	23.974%	434	18,343	37,847
Pickup Trucks	33,003	13.973%	286	9,870	22,847
Vans	4,430	1.876%	34	1,337	3,059
Truck Tractor (with or without Semi-Trailer)	3,245	1.374%	106	679	2,460
Concrete Mixer Trucks	34	0.014%	3	4	27
Dump Trucks	140	0.059%	5	43	92
Garbage Trucks	102	0.043%	4	8	90
Tanker Trucks	28	0.012%	1	8	19
Wrecker or Tow Trucks	54	0.023%	0	14	40
Other Truck Combinations	9,731	4.120%	23	2,713	6,995
School Bus	65	0.028%	4	15	46
Commercial or Non-Commercial Bus	670	0.284%	7	131	532
Motorcycle (two or three wheel)	3,104	1.314%	227	2,422	455
All Terrain Vehicle or Cycle	171	0.072%	21	111	39
Golf Carts	99	0.042%	3	75	21
Moped	38	0.016%	2	29	7
Recreational Vehicle	205	0.087%	0	47	158
Motor Home or House Car	55	0.023%	2	9	44
Fire Trucks	62	0.026%	0	10	52
Ambulances	44	0.019%	1	10	33
Other Types Of Vehicles	58	0.025%	0	36	22
Vehicle Type Unknown	24,221	10.255%	127	7,066	17,028
TOTAL	236,193	100.00%	1,816	73,622	160,755

Section 5: – Motor Vehicle and Driver Descriptions

Table 5 – 3

Hit and Run Drivers Involved in Crashes

Hit and Run	Number of Crashes				Number of Persons	
	Total	Fatal	Injury	PDO	Killed	Injured
Yes	16,136	84	3,321	12,731	86	4,202
No	104,971	1,033	34,055	69,883	1,142	50,224
TOTAL	121,107	1,117	37,376	82,614	1,228	54,426

Table 5 – 4

Gender of Drivers Involved in Crashes

Gender of Driver	Number of Drivers							
	Total	Percent of Total	In Fatal Crashes	Percent of Fatal	In Injury Crashes	Percent of Injury	In PDO Crashes	Percent of PDO
Male	131,667	55.75%	1,270	69.93%	41,526	56.40%	88,871	55.28%
Female	87,990	37.25%	406	22.36%	29,049	39.46%	58,535	36.41%
Unknown	16,536	7.00%	140	7.71%	3,047	4.14%	13,349	8.30%
TOTAL	236,193	100.00%	1,816	100.00%	73,622	100.00%	160,755	100.00%

Table 5 – 5

License Status of Drivers Involved in Crashes

License Status of Driver	Number of Drivers							
	Total	Percent of Total	In Fatal Crashes	Percent of Fatal	In Injury Crashes	Percent of Injury	In PDO Crashes	Percent of PDO
Arizona License	162,872	68.96%	1,201	66.13%	52,867	71.81%	108,804	67.68%
All Others*	73,321	31.04%	615	33.87%	20,755	28.19%	51,951	32.32%
TOTAL	236,193	100.00%	1,816	100.00%	73,622	100.00%	160,755	100.00%
*Includes drivers that have a suspended, revoked, out-of-state or country license, as well as drivers with no license or unknown license type								

Table 5 – 6

Passengers Killed and Injured by Age and Gender

Age of Passenger	Passengers Killed			Passengers Injured			
	Total	Male	Female	Total	Male	Female	Gender Unknown
0-4	7	3	4	657	306	351	0
5-9	8	6	2	1,013	488	525	0
10-14	12	6	6	1,117	516	601	0
15-19	28	17	11	1,780	730	1,050	0
20-24	21	11	10	1,417	579	838	0
25-34	30	16	14	1,814	701	1,113	0
35-44	31	15	16	1,258	443	815	0
45-54	19	4	15	1,078	330	748	0
55-64	12	6	6	956	269	687	0
65-74	21	5	16	859	208	651	0
75 & Older	38	7	31	556	153	403	0
Unknown	0	0	0	292	107	145	40
TOTAL	227	96	131	12,797	4,830	7,927	40

Section 5: – Motor Vehicle and Driver Descriptions

Table 5 – 7

Drivers and Passengers Killed and Injured by Vehicle Type

Motor Vehicle Type	Number of Drivers		Number of Passengers	
	Killed	Injured	Killed	Injured
Passenger Cars (Sedans, Convertibles, etc.)	179	17,094	86	5,472
Station Wagons	131	9,757	75	3,855
Pickup Trucks	77	4,094	31	1,465
Vans	12	634	5	308
Truck Tractor (with or without Semi-Trailer)	16	195	5	45
Concrete Mixer Trucks	0	3	0	0
Dump Trucks	0	13	0	5
Garbage Trucks	0	5	0	0
Tanker Trucks	0	2	0	0
Wrecker or Tow Trucks	0	2	0	0
Other Truck Combinations	4	926	2	270
School Bus	0	6	0	5
Commercial or Non-Commercial Bus	0	26	1	108
Motorcycle (two or three wheel)	215	2,375	4	128
All Terrain Vehicle or Cycle	17	94	6	70
Golf Carts	1	62	1	26
Moped	2	27	0	4
Recreational Vehicle	0	19	0	15
Motor Home or House Car	1	1	0	3
Fire Trucks	0	0	0	0
Ambulances	0	4	0	5
Other Types Of Vehicles	0	24	0	13
Vehicle Type Unknown	39	3,005	11	1,000
TOTAL	694	38,368	227	12,797

Table 5 – 8

Drivers Killed and Injured by Age and Gender

Age of Driver	Drivers Killed				Drivers Injured			
	Total	Male	Female	Gender Unknown	Total	Male	Female	Gender Unknown
0-4	0	0	0	0	0	0	0	0
5-9	0	0	0	0	2	2	0	0
10-14	0	0	0	0	45	33	12	0
15-19	55	44	11	0	3,217	1,840	1,377	0
20-24	81	69	12	0	5,098	2,834	2,264	0
25-34	136	110	26	0	8,632	4,668	3,964	0
35-44	91	78	13	0	6,612	3,497	3,115	0
45-54	85	67	18	0	5,199	2,702	2,497	0
55-64	86	71	15	0	4,471	2,404	2,067	0
65-74	80	67	13	0	3,026	1,610	1,416	0
75 & Older	75	52	23	0	1,921	1,069	852	0
Unknown	5	0	0	5	145	70	22	53
TOTAL	694	558	131	5	38,368	20,729	17,586	53

Section 5: – Motor Vehicle and Driver Descriptions

Table 5 – 9
Licensed Drivers in Arizona by Age

Driver Age Group	Male Number	Percent of Male	Female Number	Percent of Female	Unknown Number	Total Number	Percent of Total	Cumulative Percent
16	14,997	0.50%	13,858	0.47%	10	28,865	0.49%	0.49%
17	25,926	0.87%	23,545	0.80%	44	49,515	0.83%	1.32%
18	35,130	1.17%	31,089	1.05%	74	66,293	1.12%	2.44%
19	39,279	1.31%	35,141	1.19%	51	74,471	1.25%	3.69%
20	42,509	1.42%	37,972	1.29%	27	80,508	1.36%	5.04%
21	44,734	1.50%	41,106	1.39%	9	85,849	1.45%	6.49%
22	45,780	1.53%	42,285	1.43%	8	88,073	1.48%	7.97%
23	47,576	1.59%	44,181	1.50%	12	91,769	1.54%	9.52%
24	50,646	1.69%	46,732	1.58%	9	97,387	1.64%	11.16%
25-34	535,683	17.91%	505,818	17.15%	78	1,041,579	17.53%	28.69%
35-44	520,972	17.42%	505,774	17.15%	35	1,026,781	17.29%	45.98%
45-54	489,149	16.36%	472,415	16.02%	16	961,580	16.19%	62.17%
55-64	490,502	16.40%	481,711	16.33%	11	972,224	16.37%	78.53%
65-74	353,615	11.82%	388,891	13.19%	6	742,512	12.50%	91.03%
75 & older	254,109	8.50%	278,527	9.44%	1	532,637	8.97%	100.00%
TOTALS	2,990,607	100.00%	2,949,045	100.00%	391	5,940,043	100.00%	100.00%

Source: MVD - Point-in-Time Driver Credential Report/All Driver Licenses by Age, Gender, and Class, dated 12/31/2024.

Table 5 – 10
Driver Involvement by Age

Driver Age Group	Number of Drivers							
	Total	Percent of Total	In Fatal Crashes	Percent of Fatal	In Injury Crashes	Percent of Injury	In PDO Crashes	Percent of PDO
15 & Under	416	0.18%	5	0.28%	175	0.24%	236	0.15%
16	3,558	1.51%	18	0.99%	991	1.35%	2,549	1.59%
17	4,854	2.06%	33	1.82%	1,421	1.93%	3,400	2.12%
18	5,969	2.53%	39	2.15%	1,873	2.54%	4,057	2.52%
19	6,158	2.61%	55	3.03%	1,919	2.61%	4,184	2.60%
20	6,140	2.60%	35	1.93%	1,935	2.63%	4,170	2.59%
21	6,131	2.60%	46	2.53%	1,943	2.64%	4,142	2.58%
22	5,862	2.48%	38	2.09%	1,832	2.49%	3,992	2.48%
23	5,879	2.49%	36	1.98%	1,865	2.53%	3,978	2.47%
24	5,718	2.42%	43	2.37%	1,766	2.40%	3,909	2.43%
25-34	49,746	21.06%	338	18.61%	15,980	21.71%	33,428	20.79%
35-44	38,543	16.32%	257	14.15%	12,373	16.81%	25,913	16.12%
45-54	29,674	12.56%	233	12.83%	9,528	12.94%	19,913	12.39%
55-64	24,156	10.23%	214	11.78%	7,962	10.81%	15,980	9.94%
65-74	15,367	6.51%	156	8.59%	5,240	7.12%	9,971	6.20%
75 & Older	9,070	3.84%	124	6.83%	3,184	4.32%	5,762	3.58%
Unknown	18,952	8.02%	146	8.04%	3,635	4.94%	15,171	9.44%
TOTAL	236,193	100.00%	1,816	100.00%	73,622	100.00%	160,755	100.00%

Section 5: – Motor Vehicle and Driver Descriptions

Table 5 – 11
Driver Violations

Type of Violation or Behavior	Number of Drivers							
	Total	Percent of Total	In Fatal Crashes	Percent of Fatal	In Injury Crashes	Percent of Injury	In PDO Crashes	Percent of PDO
No Improper Action	116,269	49.23%	766	42.18%	36,844	50.04%	78,659	48.93%
Speed too Fast for Conditions	32,466	13.75%	152	8.37%	11,275	15.31%	21,039	13.09%
Exceeded Lawful Speed	733	0.31%	71	3.91%	322	0.44%	340	0.21%
Failed to Yield Right-Of-Way	23,078	9.77%	139	7.65%	8,328	11.31%	14,611	9.09%
Followed Too Closely	7,593	3.21%	13	0.72%	2,115	2.87%	5,465	3.40%
Ran Stop Sign	1,418	0.60%	25	1.38%	592	0.80%	801	0.50%
Disregarded Traffic Signal	5,891	2.49%	64	3.52%	2,605	3.54%	3,222	2.00%
Made Improper Turn	4,250	1.80%	13	0.72%	1,061	1.44%	3,176	1.98%
Drove Left of Center Line	1,362	0.58%	88	4.85%	561	0.76%	713	0.44%
Passed in No-Passing Zone	165	0.07%	5	0.28%	52	0.07%	108	0.07%
Unsafe Lane Change	10,484	4.44%	27	1.49%	1,681	2.28%	8,776	5.46%
Failed to Keep in Proper Lane	7,766	3.29%	133	7.32%	1,952	2.65%	5,681	3.53%
Crossed Median	150	0.06%	15	0.83%	76	0.10%	59	0.04%
Aggressive Driving	333	0.14%	6	0.33%	98	0.13%	229	0.14%
Wrong Way Driving	136	0.06%	13	0.72%	61	0.08%	62	0.04%
Other	5,380	2.28%	39	2.15%	1,449	1.97%	3,892	2.42%
Unknown	18,719	7.93%	247	13.60%	4,550	6.18%	13,922	8.66%
TOTAL	236,193	100.00%	1,816	100.00%	73,622	100.00%	160,755	100.00%

Table 5 – 12
Driver Physical Condition

Type of Condition	Number of Drivers							
	Total	Percent of Total	In Fatal Crashes	Percent of Fatal	In Injury Crashes	Percent of Injury	In PDO Crashes	Percent of PDO
No Apparent Influence	206,571	87.46%	998	54.96%	64,824	88.05%	140,749	87.55%
Alcohol	5,391	2.28%	256	14.10%	2,217	3.01%	2,918	1.82%
Illegal Drugs	480	0.20%	81	4.46%	195	0.26%	204	0.13%
Medications	109	0.05%	7	0.39%	48	0.07%	54	0.03%
Marijuana	215	0.09%	63	3.47%	91	0.12%	61	0.04%
Illness or Physical Impairment	757	0.32%	11	0.61%	439	0.60%	307	0.19%
Fell Asleep or Fatigued	1,595	0.68%	10	0.55%	648	0.88%	937	0.58%
Other	523	0.22%	8	0.44%	226	0.31%	289	0.18%
Unknown	20,552	8.70%	382	21.04%	4,934	6.70%	15,236	9.48%
TOTAL	236,193	100.00%	1,816	100.00%	73,622	100.00%	160,755	100.00%

Section 5: – Motor Vehicle and Driver Descriptions

Table 5 – 13

Distracted Driving Behavior

Type of Distraction	Number of Drivers							
	Total	Percent of Total	In Fatal Crashes	Percent of Fatal	In Injury Crashes	Percent of Injury	In PDO Crashes	Percent of PDO
Not Distracted	182,914	77.44%	871	47.96%	57,623	78.27%	124,420	77.40%
Talking on Hands Free Device	187	0.08%	2	0.11%	68	0.09%	117	0.07%
Talking on Hand Held Device	261	0.11%	3	0.17%	93	0.13%	165	0.10%
Passenger	540	0.23%	5	0.28%	219	0.30%	316	0.20%
Other Activity with an Electronic Device	1,008	0.43%	6	0.33%	373	0.51%	629	0.39%
Manually Operating an Electronic Device	627	0.27%	5	0.28%	212	0.29%	410	0.26%
Other Inside the Vehicle (eating, drinking, etc.)	1,987	0.84%	9	0.50%	676	0.92%	1,302	0.81%
Outside the Vehicle (includes unspecified distractions)	1,590	0.67%	9	0.50%	525	0.71%	1,056	0.66%
Distracted Unknown Reason	2,089	0.88%	10	0.55%	693	0.94%	1,386	0.86%
Unknown	44,990	19.05%	896	49.34%	13,140	17.85%	30,954	19.26%
TOTAL	236,193	100.00%	1,816	100.00%	73,622	100.00%	160,755	100.00%

Table 5 – 14

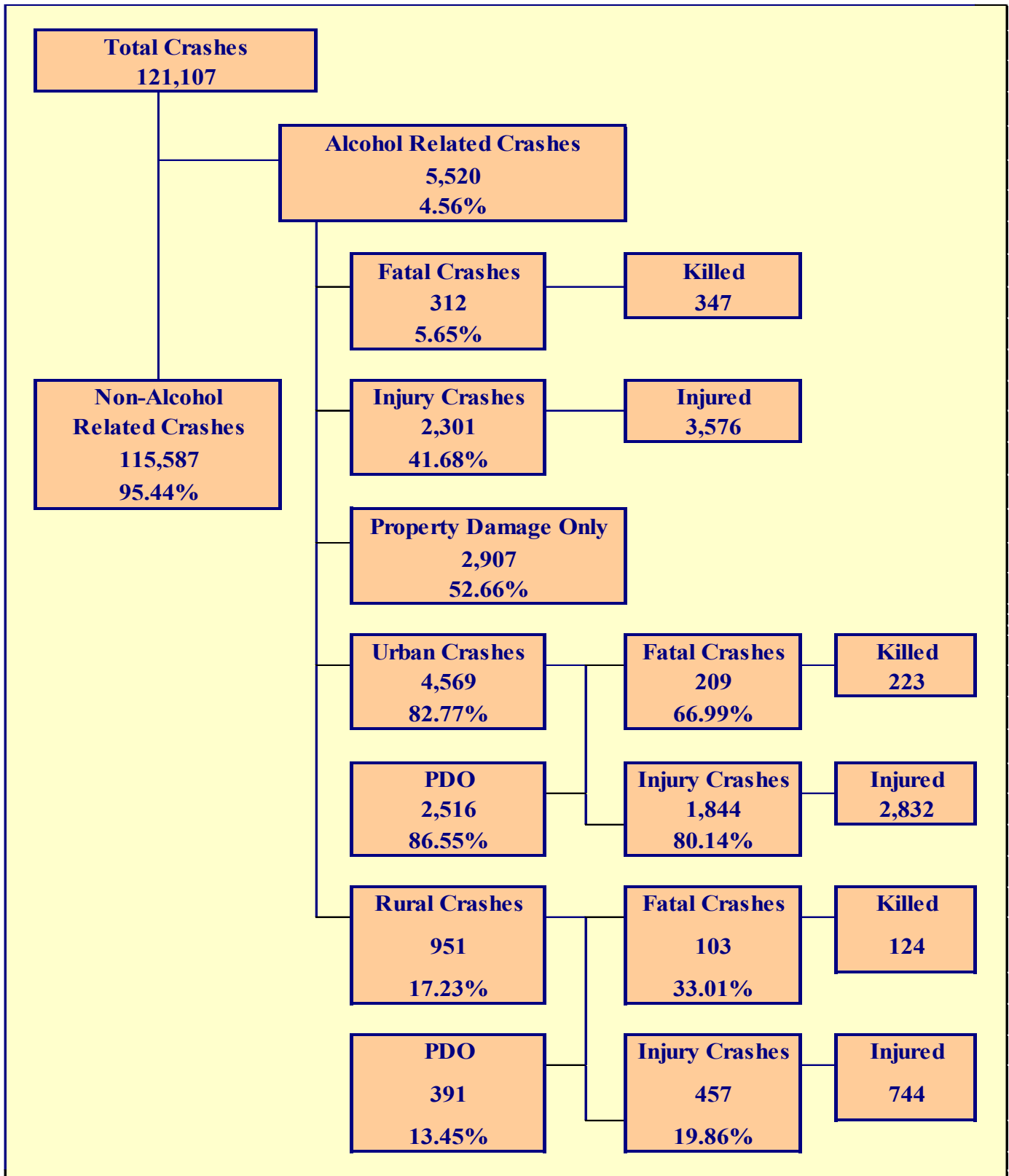
Secondary Crashes

Secondary Crash	Number of Crashes				Number of Persons	
	Total	Fatal	Injury	PDO	Killed	Injured
Yes	1,480	21	609	850	24	1,085
No	119,627	1,096	36,767	81,764	1,204	53,341
TOTAL	121,107	1,117	37,376	82,614	1,228	54,426

Table 5 – 15

Road Rage Crashes

Road Rage	Number of Crashes				Number of Persons	
	Total	Fatal	Injury	PDO	Killed	Injured
Yes	1,021	5	217	799	6	296
No	120,086	1,112	37,159	81,815	1,222	54,130
TOTAL	121,107	1,117	37,376	82,614	1,228	54,426



Section 6: – Alcohol Related Crashes

The statistics in the Alcohol Related section represent those crashes where the investigating officer indicated that a driver, pedestrian, or bicyclist had been drinking an alcoholic beverage and may or may not be substantiated by a blood or breath test. No assumption is to be made that the person was legally intoxicated (blood alcohol content of 0.08% or higher) at the time of the crash.

Table 6 – 1
Economic Loss Due to Alcohol Related Crashes in Arizona for 2024

Fatalities	\$3,301,833,737
Suspected Serious Injuries	\$307,178,442
Suspected Minor Injuries	\$251,436,552
Possible Injuries	\$137,389,140
Property Damage Only	\$31,046,760
TOTAL	\$4,028,884,631

Refer to note on Page 4 for Economic Loss Estimates

Table 6 – 2
Alcohol Related Crash History

Year	Alcohol Related Crashes	Percent of all Crashes	Persons Killed	Percent of all Fatalities	Persons Injured	Percent of all Injuries
2020	4,601	4.63%	229	21.71%	2,924	7.00%
2021	5,687	4.66%	254	21.27%	3,680	7.04%
2022	5,675	4.68%	312	23.64%	3,660	6.88%
2023	5,863	4.76%	358	27.37%	3,972	7.22%
2024	5,520	4.56%	347	28.26%	3,576	6.57%

Table 6 – 3
Manner of Collision in Alcohol Related Crashes

Manner of Collision Type	Number of Crashes							
	Total	Percent of All Crashes	Fatal	Percent of Fatal Crashes	Injury	Percent of Injury Crashes	PDO	Percent of PDO Crashes
Angle	540	16.02%	29	13.24%	263	18.20%	248	14.53%
Left Turn	362	10.74%	18	8.22%	190	13.15%	154	9.02%
Rear End	1,294	38.39%	25	11.42%	574	39.72%	695	40.71%
Head-On	237	7.03%	32	14.61%	111	7.68%	94	5.51%
Sideswipe (same)	480	14.24%	5	2.28%	120	8.30%	355	20.80%
Sideswipe (opposite)	114	3.38%	3	1.37%	36	2.49%	75	4.39%
U-Turn	26	0.77%	3	1.37%	10	0.69%	13	0.76%
Other*	304	9.02%	101	46.12%	136	9.41%	67	3.93%
Unknown	14	0.42%	3	1.37%	5	0.35%	6	0.35%
TOTAL	3,371	100.00%	219	100.00%	1,445	100.00%	1,707	100.00%

Note: Includes only multi-unit alcohol related crashes

*Other includes pedestrian and bicycle crashes

Section 6: – Alcohol Related Crashes

Table 6 – 4

Alcohol Related Crashes by First Harmful Event

First Harmful Event Type	Number of Crashes				Number of Persons	
	Total	Fatal	Injury	PDO	Killed	Injured
Collision with Motor Vehicle in Transport	2,660	118	1,170	1,372	139	2,195
Overturning	237	37	148	52	41	215
Collision with Pedestrian	175	74	101	0	75	110
Collision with Bicyclist	25	8	17	0	8	19
Collision with Animal	5	1	3	1	2	6
Collision with Fixed Object	1,886	64	683	1,139	70	816
Collision with Non-fixed Object*	525	9	174	342	9	210
Vehicle Fire or Explosion	4	0	3	1	0	3
Other Non-collision**	2	0	2	0	0	2
Unknown	1	1	0	0	3	0
TOTAL	5,520	312	2,301	2,907	347	3,576
*Includes Collision with Parked Vehicles, Trains, Railway Vehicles, and Work Zone Equipment						
**Includes Vehicle Immersion, Jackknife, and Cargo Loss or Shift						

Table 6 – 5

Alcohol Related Crashes by Vehicle Type

Motor Vehicle Type	Number of Vehicles				
	Total	Percent of Total	In Fatal Crashes	In Injury Crashes	In PDO Crashes
Passenger Cars (Sedans, Convertibles, etc.)	2,564	47.561%	87	1,016	1,461
Station Wagons	1,210	22.445%	56	528	626
Pickup Trucks	855	15.860%	47	341	467
Vans	59	1.094%	1	15	43
Truck Tractor (with or without Semi-Trailer)	4	0.074%	0	1	3
Concrete Mixer Trucks	0	0.000%	0	0	0
Dump Trucks	0	0.000%	0	0	0
Garbage Trucks	0	0.000%	0	0	0
Tanker Trucks	1	0.019%	0	1	0
Wrecker or Tow Trucks	1	0.019%	0	1	0
Other Truck Combinations	125	2.319%	1	40	84
School Bus	0	0.000%	0	0	0
Commercial or Non-Commercial Bus	0	0.000%	0	0	0
Motorcycle (two or three wheel)	139	2.578%	43	88	8
All Terrain Vehicle or Cycle	28	0.519%	12	11	5
Golf Carts	9	0.167%	1	7	1
Moped	1	0.019%	0	1	0
Recreational Vehicle	6	0.111%	0	3	3
Motor Home or House Car	0	0.000%	0	0	0
Fire Trucks	0	0.000%	0	0	0
Ambulances	0	0.000%	0	0	0
Other Types Of Vehicles	3	0.056%	0	2	1
Vehicle Type Unknown	386	7.160%	8	162	216
TOTAL	5,391	100.00%	256	2,217	2,918

Section 6: – Alcohol Related Crashes

Table 6 – 6

Lighting Conditions in Alcohol Related Crashes

Type of Lighting Conditions	Number of Crashes				Number of Persons	
	Total	Fatal	Injury	PDO	Killed	Injured
Daylight	1,640	84	727	829	95	1,146
Dawn	85	2	38	45	2	59
Dusk	167	5	61	101	5	99
Dark - Lighted	2,771	119	1,097	1,555	128	1,697
Dark - Not Lighted	791	77	358	356	88	550
Dark - Unknown Lighting	50	14	19	17	14	21
Unknown	16	11	1	4	15	4
TOTAL	5,520	312	2,301	2,907	347	3,576

Table 6 – 7

Road Surface Conditions in Alcohol Related Crashes

Type of Road Surface Condition	Number of Drivers				Number of Persons	
	Total	In Fatal Crashes	In Injury Crashes	In PDO Crashes	Killed	Injured
Dry	5,066	227	2,104	2,735	303	3,389
Wet	223	7	83	133	7	134
Snow/Slush	9	0	2	7	0	4
Ice/Frost	4	0	2	2	0	3
Water (standing or moving)	2	0	1	1	0	3
Mud, Dirt, Gravel, Sand	46	4	20	22	5	29
Other	3	0	0	3	0	0
Unknown	38	18	5	15	32	14
TOTAL	5,391	256	2,217	2,918	347	3,576

Table 6 – 8

Gender of Drivers Involved in Alcohol Related Crashes

Gender of Driver	Number of Drivers							
	Total	Percent of Total	In Fatal Crashes	Percent of Fatal	In Injury Crashes	Percent of Injury	In PDO Crashes	Percent of PDO
Male	3,832	71.08%	208	81.25%	1,587	71.58%	2,037	69.81%
Female	1,515	28.10%	47	18.36%	616	27.79%	852	29.20%
Unknown	44	0.82%	1	0.39%	14	0.63%	29	0.99%
TOTAL	5,391	100.00%	256	100.00%	2,217	100.00%	2,918	100.00%

In total crashes across the state, 55.75% of the drivers were males. When alcohol was involved, males accounted for 71.08% of the drivers.

Section 6: – Alcohol Related Crashes

Table 6 – 9

Driver Involvement by Age in Alcohol Related Crashes

Driver Age Group	Number of Drivers							
	Total	Percent of Total	In Fatal Crashes	Percent of Fatal	In Injury Crashes	Percent of Injury	In PDO Crashes	Percent of PDO
15 & Under	9	0.17%	0	0.00%	8	0.36%	1	0.03%
16	22	0.41%	2	0.78%	9	0.41%	11	0.38%
17	64	1.19%	5	1.95%	33	1.49%	26	0.89%
18	92	1.71%	4	1.56%	33	1.49%	55	1.88%
19	109	2.02%	11	4.30%	45	2.03%	53	1.82%
20	150	2.78%	6	2.34%	54	2.44%	90	3.08%
21	224	4.16%	10	3.91%	103	4.65%	111	3.80%
22	195	3.62%	11	4.30%	93	4.19%	91	3.12%
23	218	4.04%	8	3.13%	87	3.92%	123	4.22%
24	194	3.60%	12	4.69%	74	3.34%	108	3.70%
25-34	1,693	31.40%	69	26.95%	671	30.27%	953	32.66%
35-44	1,027	19.05%	53	20.70%	422	19.03%	552	18.92%
45-54	632	11.72%	31	12.11%	253	11.41%	348	11.93%
55-64	439	8.14%	20	7.81%	200	9.02%	219	7.51%
65-74	187	3.47%	8	3.13%	78	3.52%	101	3.46%
75 & Older	58	1.08%	3	1.17%	23	1.04%	32	1.10%
Unknown	78	1.45%	3	1.17%	31	1.40%	44	1.51%
TOTAL	5,391	100.00%	256	100.00%	2,217	100.00%	2,918	100.00%

Table 6 – 10

When Alcohol Related Crashes Occurred in 2024

Time of Day	Total	Weekday	Weekend*
Daytime**	1,573	965	608
Nighttime	3,947	1,540	2,407
Total	5,520	2,505	3,015
*Weekend begins at 6:00 p.m. on Friday and continues until 6:00 a.m. Monday. All other times and days are considered Weekdays.			
**Daytime refers to the hours between 6:00 a.m. and 6:00 p.m.			

Table 6 – 11

Safety Device Usage for Drinking Drivers

Severity of Injury	Safety Device Not Used	Lap Belt	Lap & Shoulder Belt	Protective Helmet	Other	Unknown	Totals
No Injury	157	31	2,164	4	4	978	3,338
Unknown Injury	8	0	56	0	0	162	226
Possible Injury	72	1	309	4	0	174	560
Suspected Minor Injury	181	15	446	19	0	202	863
Suspected Serious Injury	96	0	68	12	0	61	237
Fatal Injury	88	0	26	18	1	34	167
TOTALS	602	47	3,069	57	5	1,611	5,391

Section 6: – Alcohol Related Crashes

Table 6 – 12

Persons Killed and Injured in Alcohol Related Crashes

Age of Victim	Persons Killed			Persons Injured			
	Total	Male	Female	Total	Male	Female	Gender Unknown
0-4	2	0	2	41	23	18	0
5-9	0	0	0	62	27	35	0
10-14	2	1	1	54	25	29	0
15-19	29	23	6	314	182	132	0
20-24	44	29	15	590	385	205	0
25-34	79	63	16	885	566	319	0
35-44	82	64	18	661	426	235	0
45-54	47	30	17	379	226	153	0
55-64	29	23	6	309	192	117	0
65-74	24	19	5	161	100	61	0
75 & Older	9	7	2	65	41	24	0
Unknown	0	0	0	55	33	9	13
TOTAL	347	259	88	3,576	2,226	1,337	13

Table 6 – 13

Alcohol Related Crashes by County

County	Number of Crashes				Number of Persons	
	Total	Fatal	Injury	PDO	Killed	Injured
Apache	44	12	19	13	13	42
Cochise	53	8	24	21	10	36
Coconino	201	9	100	92	12	148
Gila	57	6	33	18	6	47
Graham	24	5	10	9	7	15
Greenlee	10	0	5	5	0	6
La Paz	22	3	5	14	4	5
Maricopa	3,544	167	1,384	1,993	180	2,157
Mohave	240	6	124	110	6	190
Navajo	75	5	42	28	6	71
Pima	536	47	233	256	51	382
Pinal	347	29	171	147	34	254
Santa Cruz	14	2	7	5	2	13
Yavapai	213	9	99	105	11	143
Yuma	140	4	45	91	5	67
TOTAL	5,520	312	2,301	2,907	347	3,576

Section 6: – Alcohol Related Crashes

Chart 6 – 1

All Alcohol Related Crashes vs. Fatal Alcohol Related Crashes by Day of Week

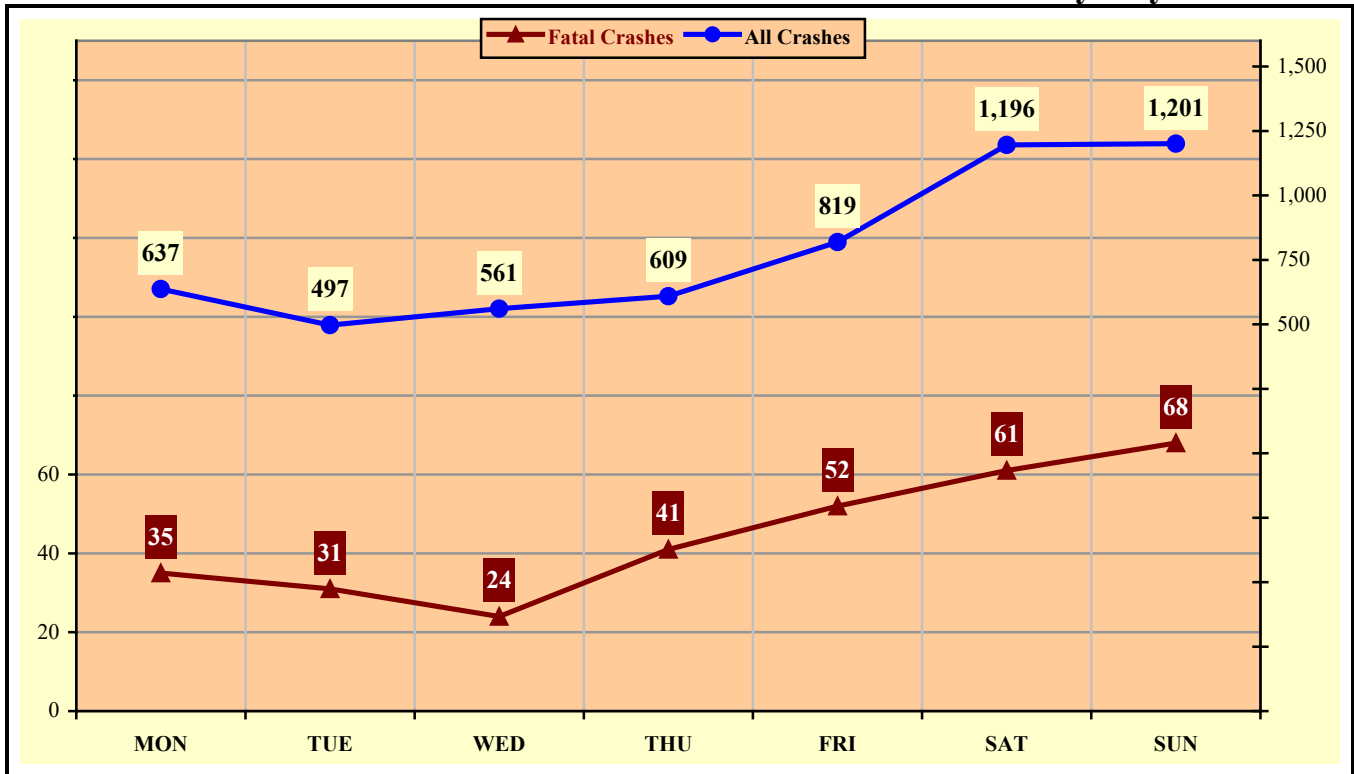
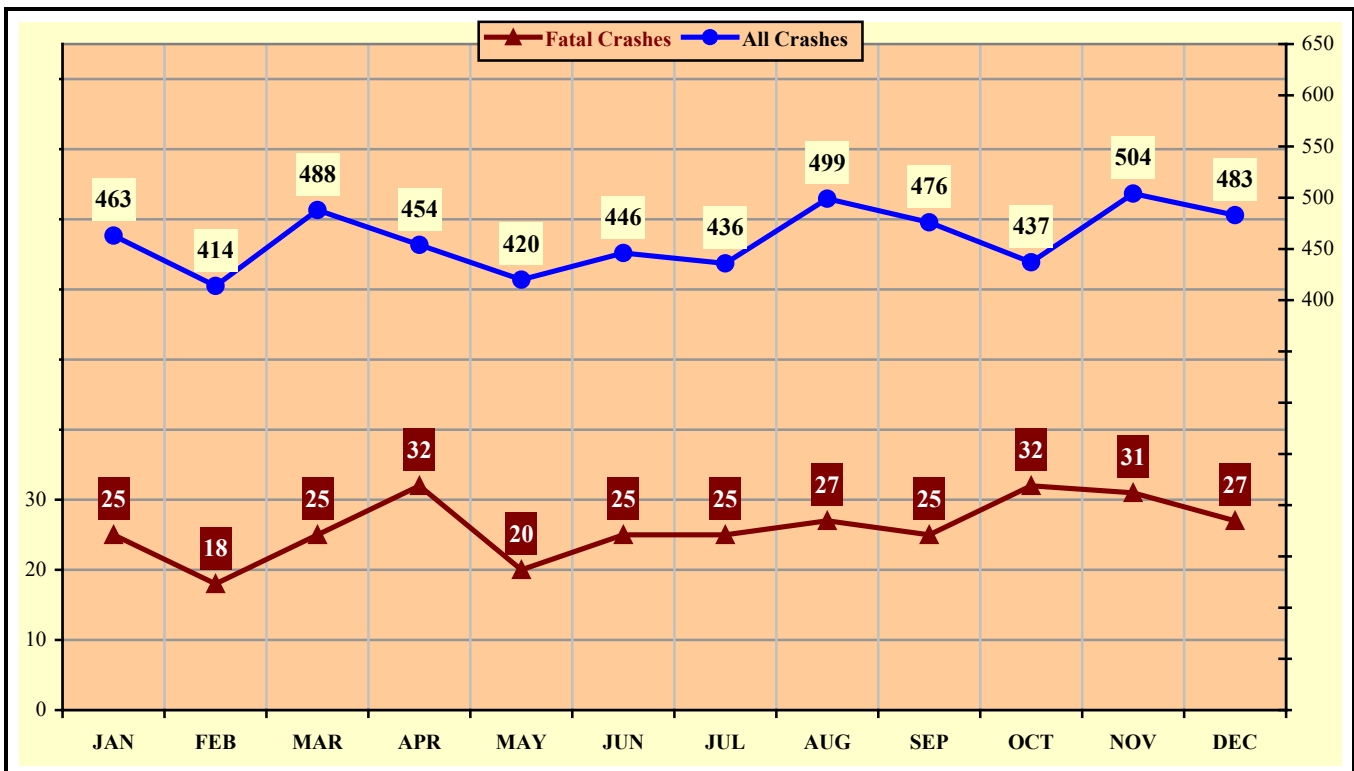


Chart 6 – 2

All Alcohol Related Crashes vs. Fatal Alcohol Related Crashes by Month



Section 6: – Alcohol Related Crashes

Chart 6 – 3

All Alcohol Related Crashes vs. Fatal Alcohol Related Crashes - Weekdays

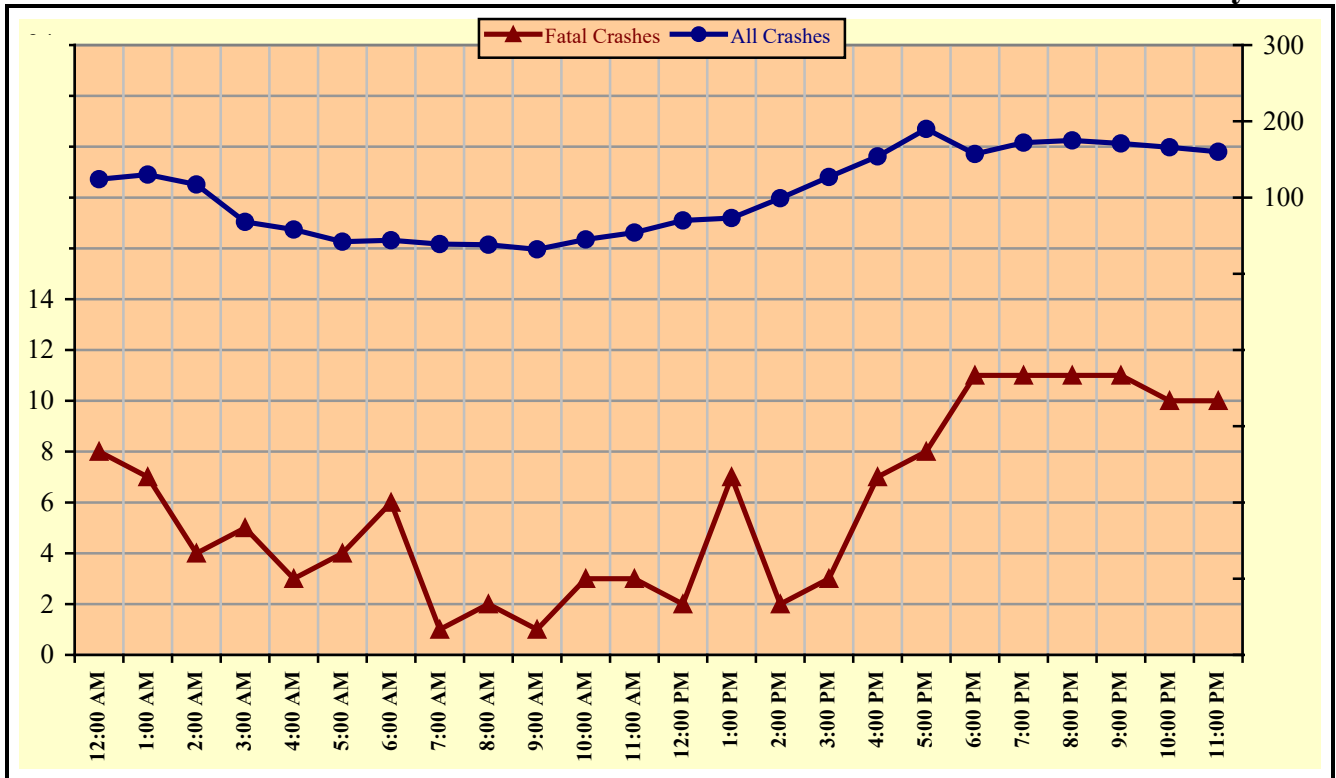
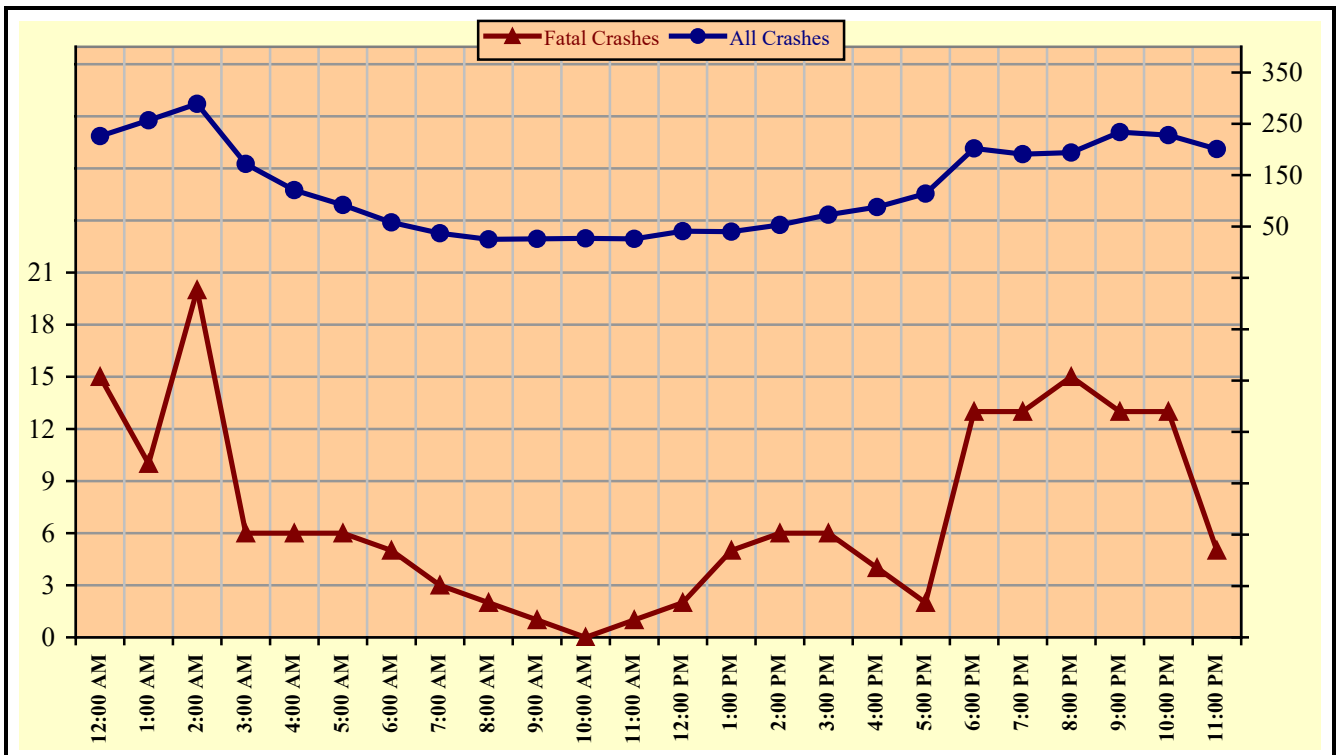


Chart 6 – 4

All Alcohol Related Crashes vs. Fatal Alcohol Related Crashes - Weekends



Section 6: – Alcohol Related Crashes

Table 6 – 14

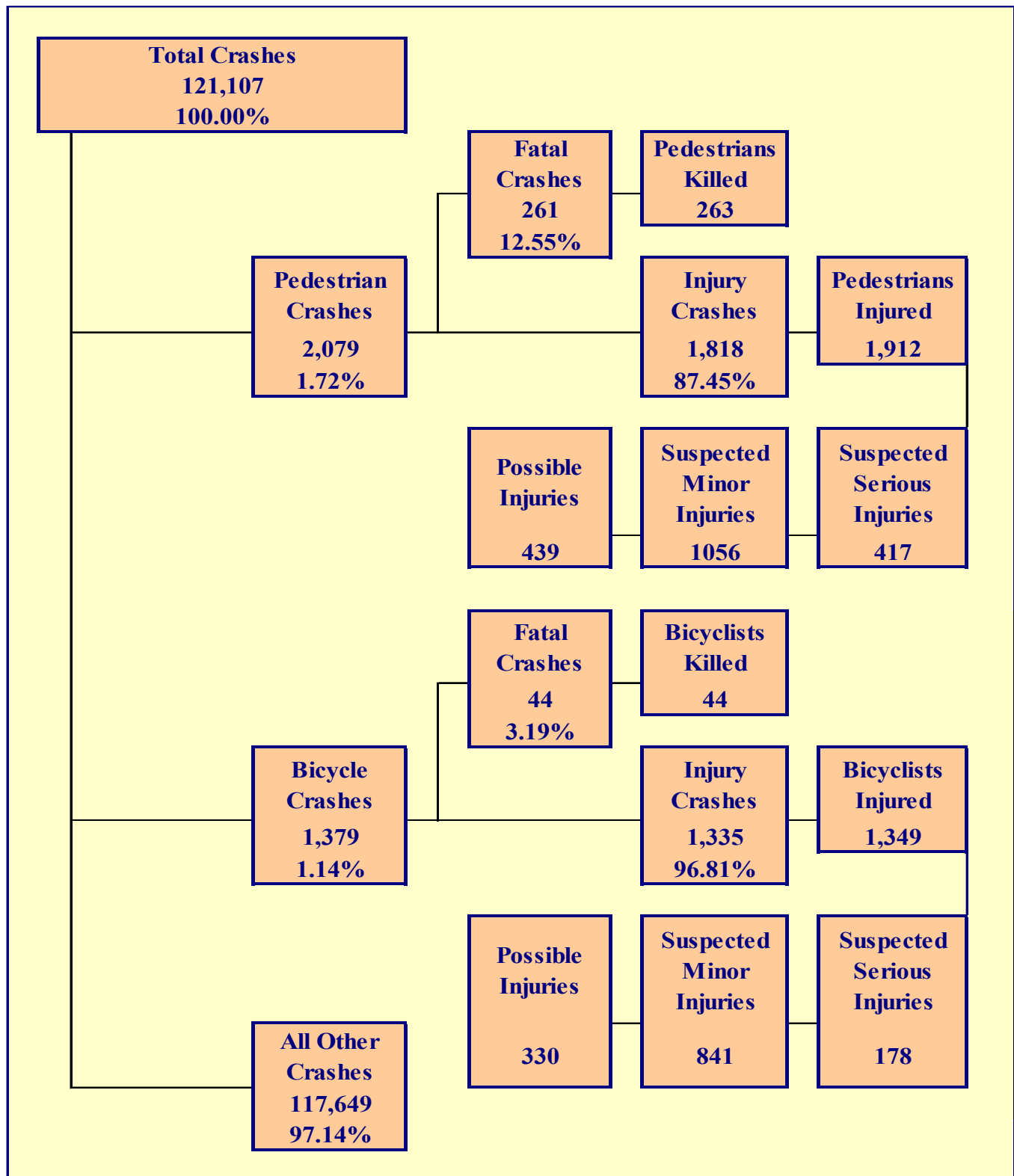
Alcohol Related Crashes by Hour and Day of Week

Hour Beginning	Total Crashes		Monday		Tuesday		Wednesday		Thursday		Friday		Saturday		Sunday		Weekdays		Weekends	
	All	Fatal	All	Fatal	All	Fatal	All	Fatal	All	Fatal	All	Fatal	All	Fatal	All	Fatal	All	Fatal	All	Fatal
12:00 AM	350	23	46	0	17	1	21	2	41	4	45	1	85	8	95	7	124	8	226	15
1:00 AM	387	17	51	4	29	0	34	1	33	6	34	0	93	1	113	5	130	7	257	10
2:00 AM	406	24	51	5	21	0	26	1	23	1	47	2	113	7	125	8	117	4	289	20
3:00 AM	240	11	23	3	14	2	15	0	18	2	21	1	78	1	71	2	68	5	172	6
4:00 AM	179	9	23	0	10	0	14	1	15	0	19	2	42	2	56	4	58	3	121	6
5:00 AM	134	10	11	0	7	1	10	0	10	2	15	1	34	4	47	2	42	4	92	6
6:00 AM	102	11	15	1	4	0	9	1	8	1	8	3	19	3	39	2	44	6	58	5
7:00 AM	76	4	8	0	8	1	6	0	9	0	8	0	17	1	20	2	39	1	37	3
8:00 AM	63	4	8	0	5	0	6	0	7	1	12	1	13	2	12	0	38	2	25	2
9:00 AM	58	2	8	1	6	0	6	0	5	0	7	0	10	1	16	0	32	1	26	1
10:00 AM	72	3	11	2	7	0	4	0	16	0	7	1	12	0	15	0	45	3	27	0
11:00 AM	80	4	10	0	7	1	9	1	16	0	12	1	17	1	9	0	54	3	26	1
12:00 PM	111	4	12	0	14	2	14	0	13	0	17	0	20	0	21	2	70	2	41	2
1:00 PM	113	12	17	2	13	0	10	0	20	4	13	1	21	2	19	3	73	7	40	5
2:00 PM	152	8	27	0	20	2	17	0	11	0	24	0	26	4	27	2	99	2	53	6
3:00 PM	200	9	24	0	23	0	27	1	25	0	28	2	45	2	28	4	127	3	73	6
4:00 PM	242	11	30	2	19	1	29	0	35	1	41	3	43	2	45	2	154	7	88	4
5:00 PM	304	10	40	2	31	0	34	1	37	3	48	2	52	1	62	1	190	8	114	2
6:00 PM	359	24	40	4	43	3	40	0	34	4	59	6	71	3	72	4	157	11	202	13
7:00 PM	363	24	34	3	35	3	52	2	51	3	60	5	73	4	58	4	172	11	191	13
8:00 PM	369	26	42	0	37	5	47	4	49	2	76	10	61	2	57	3	175	11	194	15
9:00 PM	405	24	33	1	50	3	41	5	47	2	90	5	67	5	77	3	171	11	234	13
10:00 PM	394	23	34	1	40	4	44	1	48	4	74	4	99	3	55	6	166	10	228	13
11:00 PM	361	15	39	4	37	2	46	3	38	1	54	1	85	2	62	2	160	10	201	5
TOTAL	5,520	312	637	35	497	31	561	24	609	41	819	52	1,196	61	1,201	68	2,505	140	3,015	172

Crashes during Weekends accounted for 54.62% of all Alcohol Related crashes and 55.13% of Alcohol Related Fatal Crashes.

Section 7

Pedestrian and Bicycle Crashes



Section 7: – Pedestrian and Bicycle Crashes

Table 7 – 1

Pedestrians Killed and Injured By Age and Gender

Age Group	Pedestrians Killed				Pedestrians Injured		
	Total	Male	Female	Gender Unknown	Total	Male	Female
0-4	4	1	3	0	18	13	5
5-9	3	1	2	0	51	38	13
10-14	3	1	2	0	103	64	39
15-19	3	3	0	0	196	119	77
20-24	17	10	7	0	198	125	73
25-34	41	30	11	0	353	241	112
35-44	66	51	15	0	357	237	120
45-54	46	29	17	0	212	124	88
55-64	29	19	10	0	188	125	63
65-74	29	17	12	0	153	101	52
75 & Older	20	16	4	0	52	33	19
Unknown	2	1	0	1	31	21	10
TOTAL	263	179	83	1	1,912	1,241	671

Table 7 – 2

Pedestrian Crashes by Geographic Location

Category	Total	Urban	Percent of Total	Rural	Percent of Total
Total Crashes	2,079	1,949	93.75%	130	6.25%
Fatal Crashes	261	215	82.38%	46	17.62%
Injury Crashes	1,818	1,734	95.38%	84	4.62%
Pedestrians Killed	263	216	82.13%	47	17.87%
Pedestrians Injured	1,912	1,817	95.03%	95	4.97%

Table 7 – 3

Pedestrian Crash History

Year	Pedestrian Crashes	Percent of all Crashes	Pedestrians Killed	Percent of all Fatalities	Pedestrians Injured	Percent of all Injuries
2020	1,538	1.55%	235	22.27%	1,366	3.27%
2021	1,749	1.43%	261	21.86%	1,568	3.00%
2022	1,964	1.62%	307	23.26%	1,745	3.28%
2023	1,986	1.61%	273	20.87%	1,821	3.31%
2024	2,079	1.72%	263	21.42%	1,912	3.51%

Section 7: – Pedestrian and Bicycle Crashes

Table 7 – 4

Pedestrians Killed by Age and Action

Pedestrian Action	Total	Age Group of Pedestrian											
		0-4	5-9	10-14	15-19	20-24	25-34	35-44	45-54	55-64	65-74	75 & Older	Unknown
Crossing Road	139	2	1	1	1	7	19	26	30	20	19	13	0
Walking With Traffic	18	0	1	1	0	2	3	9	1	0	1	0	0
Walking Against Traffic	11	0	0	1	0	0	1	2	1	2	2	2	0
Standing	24	1	0	0	1	2	6	6	4	1	1	2	0
Lying	14	0	0	0	0	3	2	7	0	1	1	0	0
Getting on/off Vehicle	0	0	0	0	0	0	0	0	0	0	0	0	0
Other	12	0	1	0	0	1	2	3	2	1	0	2	0
Unknown	45	1	0	0	1	2	8	13	8	4	5	1	2
TOTAL	263	4	3	3	3	17	41	66	46	29	29	20	2

Table 7 – 5

Pedestrians Injured by Age and Action

Pedestrian Action	Total	Age Group of Pedestrian											
		0-4	5-9	10-14	15-19	20-24	25-34	35-44	45-54	55-64	65-74	75 & Older	Unknown
Crossing Road	1,315	15	37	75	147	128	216	232	143	142	124	36	20
Walking With Traffic	124	1	4	8	12	10	31	20	13	13	7	4	1
Walking Against Traffic	114	0	3	4	7	17	30	21	15	7	6	3	1
Standing	119	1	4	3	7	9	31	32	13	7	9	3	0
Lying	15	0	0	0	1	1	5	6	1	0	0	1	0
Getting on/off Vehicle	14	0	0	0	1	1	3	5	2	2	0	0	0
Other	166	1	3	10	18	28	33	32	17	13	6	3	2
Unknown	45	0	0	3	3	4	4	9	8	4	1	2	7
TOTAL	1,912	18	51	103	196	198	353	357	212	188	153	52	31

Table 7 – 6

Pedestrian Physical Condition in Motor Vehicle Crashes

Type of Condition	Number of Pedestrians					
	Total	Percent of Total	In Fatal Crashes	Percent of Fatal	In Injury Crashes	Percent of Injury
No Apparent Influence	1,505	69.20%	54	19.49%	1,451	76.45%
Alcohol	158	7.26%	68	24.55%	90	4.74%
Illegal Drugs	80	3.68%	66	23.83%	14	0.74%
Medications	0	0.00%	0	0.00%	0	0.00%
Marijuana	11	0.51%	10	3.61%	1	0.05%
Illness or Physical Impairment	7	0.32%	0	0.00%	7	0.37%
Fell Asleep or Fatigued	2	0.09%	0	0.00%	2	0.11%
Other	10	0.46%	1	0.36%	9	0.47%
Unknown	402	18.48%	78	28.16%	324	17.07%
TOTAL	2,175	100.00%	277	100.00%	1,898	100.00%

Section 7: – Pedestrian and Bicycle Crashes

Table 7 – 7

Lighting Conditions in Pedestrian Crashes

Type of Lighting Conditions	Number of Crashes		
	Total	Fatal	Injury
Daylight	1,034	34	1,000
Dawn	40	3	37
Dusk	63	7	56
Dark - Lighted	725	136	589
Dark - Not Lighted	166	49	117
Dark - Unknown Lighting	24	15	9
Unknown	27	17	10
TOTAL	2,079	261	1,818

Table 7 – 8

Weather Conditions in Pedestrian Crashes

Type of Weather Conditions	Number of Crashes		
	Total	Fatal	Injury
Clear	1,883	206	1,677
Cloudy	94	11	83
Sleet/Hail	3	0	3
Rain	47	8	39
Snow or Blowing Snow	2	0	2
Blowing Sand, Soil, Dirt	0	0	0
Fog, Smog, Smoke	0	0	0
Other	4	0	4
Unknown	46	36	10
TOTAL	2,079	261	1,818

Table 7 – 9

Bicyclists Killed and Injured by Age and Gender

Age Group	Bicyclists Killed			Bicyclists Injured		
	Total	Male	Female	Total	Male	Female
0-4	0	0	0	3	1	2
5-9	1	0	1	20	14	6
10-14	2	2	0	108	84	24
15-19	2	2	0	205	164	41
20-24	0	0	0	130	98	32
25-34	3	3	0	233	185	48
35-44	9	8	1	169	141	28
45-54	4	2	2	154	123	31
55-64	6	6	0	177	149	28
65-74	11	11	0	93	78	15
75 & Older	6	6	0	43	40	3
Unknown	0	0	0	14	11	3
TOTAL	44	40	4	1,349	1,088	261

Section 7: – Pedestrian and Bicycle Crashes

Table 7 – 10

Bicycle Crashes by Geographic Location

Category	Total	Urban	Percent of Total	Rural	Percent of Total
Total Crashes	1,379	1,325	96.08%	54	3.92%
Fatal Crashes	44	37	84.09%	7	15.91%
Injury Crashes	1,335	1,288	96.48%	47	3.52%
Bicyclists Killed	44	37	84.09%	7	15.91%
Bicyclists Injured	1,349	1,301	96.44%	48	3.56%

Table 7 – 11

Bicycle Crash History

Year	Bicycle Crashes	Percent of all Crashes	Bicyclists Killed	Percent of all Fatalities	Bicyclists Injured	Percent of all Injuries
2020	853	0.86%	32	3.03%	837	2.00%
2021	1,063	0.87%	45	3.77%	1,042	1.99%
2022	1,269	1.05%	51	3.86%	1,235	2.32%
2023	1,306	1.06%	44	3.36%	1,296	2.36%
2024	1,379	1.14%	44	3.58%	1,349	2.48%

Table 7 – 12

Lighting Conditions in Bicycle Crashes

Type of Lighting Conditions	Number of Crashes		
	Total	Fatal	Injury
Daylight	1,022	22	1,000
Dawn	34	0	34
Dusk	46	0	46
Dark - Lighted	228	14	214
Dark - Not Lighted	37	5	32
Dark - Unknown Lighting	3	2	1
Unknown	9	1	8
TOTAL	1,379	44	1,335

Table 7 – 13

Weather Conditions in Bicycle Crashes

Type of Weather Conditions	Number of Crashes		
	Total	Fatal	Injury
Clear	1,253	32	1,221
Cloudy	89	4	85
Sleet/Hail	1	0	1
Rain	16	1	15
Snow or Blowing Snow	1	0	1
Blowing Sand, Soil, Dirt	0	0	0
Fog, Smog, Smoke	0	0	0
Other	0	0	0
Unknown	19	7	12
TOTAL	1,379	44	1,335

Section 7: – Pedestrian and Bicycle Crashes

Table 7 – 14
Pedestrian Crashes by County

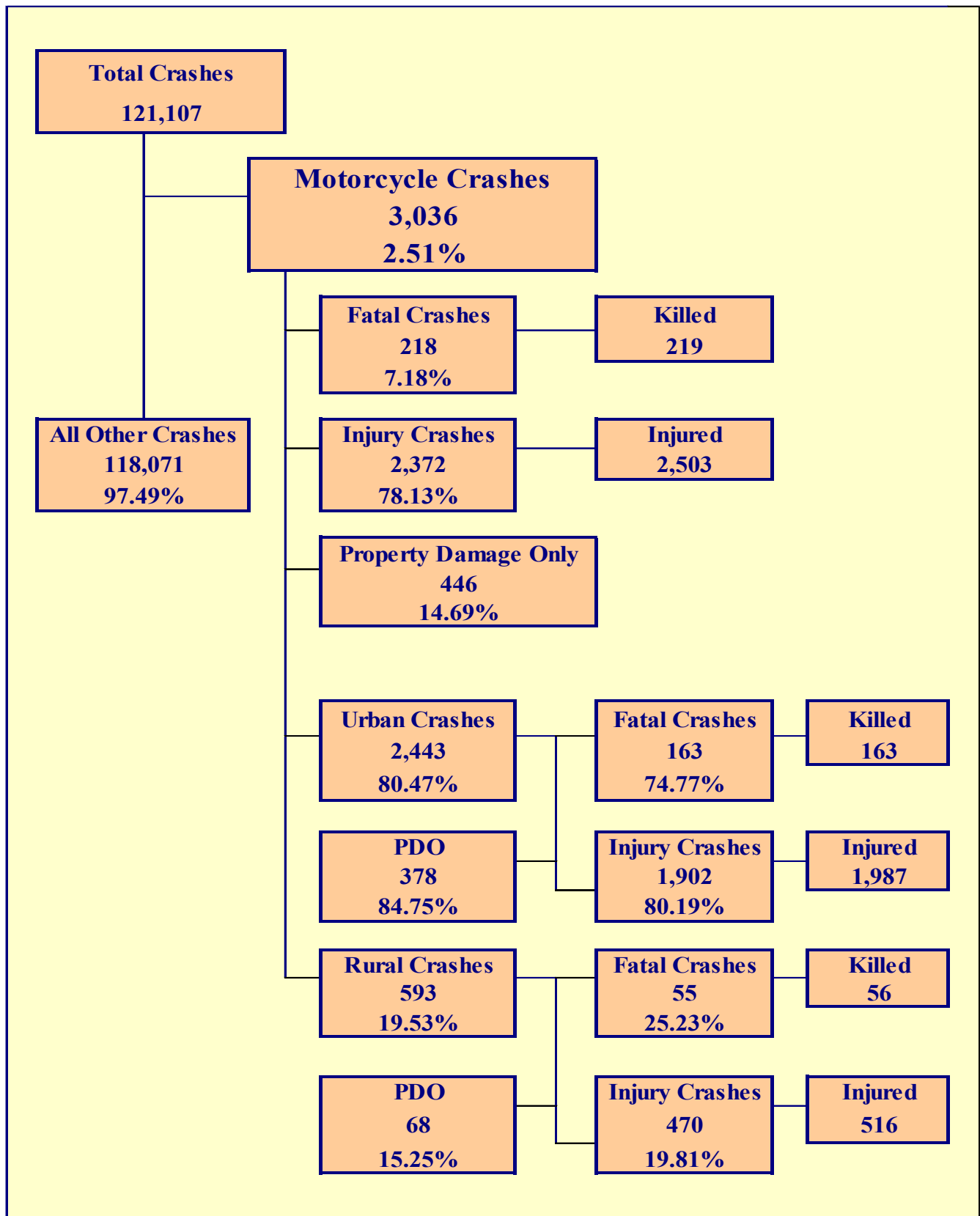
County	Number of Crashes			Number of Pedestrians	
	Total	Fatal	Injury	Killed	Injured
Apache	6	5	1	5	1
Cochise	17	4	13	4	14
Coconino	70	6	64	6	67
Gila	11	0	11	0	11
Graham	3	3	0	3	0
Greenlee	0	0	0	0	0
La Paz	5	3	2	3	2
Maricopa	1,516	158	1,358	158	1,425
Mohave	40	6	34	6	37
Navajo	14	7	7	7	9
Pima	237	51	186	52	196
Pinal	68	9	59	10	62
Santa Cruz	3	1	2	1	2
Yavapai	42	5	37	5	39
Yuma	47	3	44	3	47
TOTAL	2,079	261	1,818	263	1,912

Maricopa and Pima Counties accounted for 79.85% of pedestrian fatalities.

Table 7 – 15
Bicycle Crashes by County

County	Number of Crashes			Number of Bicyclists	
	Total	Fatal	Injury	Killed	Injured
Apache	2	0	2	0	2
Cochise	16	1	15	1	15
Coconino	48	0	48	0	48
Gila	2	1	1	1	1
Graham	0	0	0	0	0
Greenlee	0	0	0	0	0
La Paz	1	1	0	1	0
Maricopa	991	27	964	27	973
Mohave	38	1	37	1	38
Navajo	2	1	1	1	1
Pima	140	9	131	9	132
Pinal	53	2	51	2	52
Santa Cruz	1	0	1	0	2
Yavapai	48	1	47	1	47
Yuma	37	0	37	0	38
TOTAL	1,379	44	1,335	44	1,349

Maricopa and Pima Counties accounted for 82.02% of bicycle crashes.



Section 8: – Motorcycle (MC) Crashes

Chart 8 – 1
MC Fatalities by Year

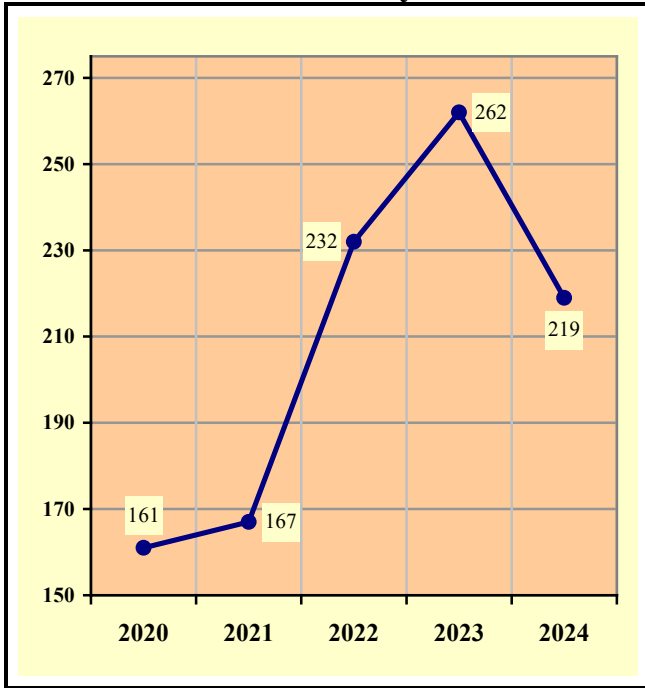
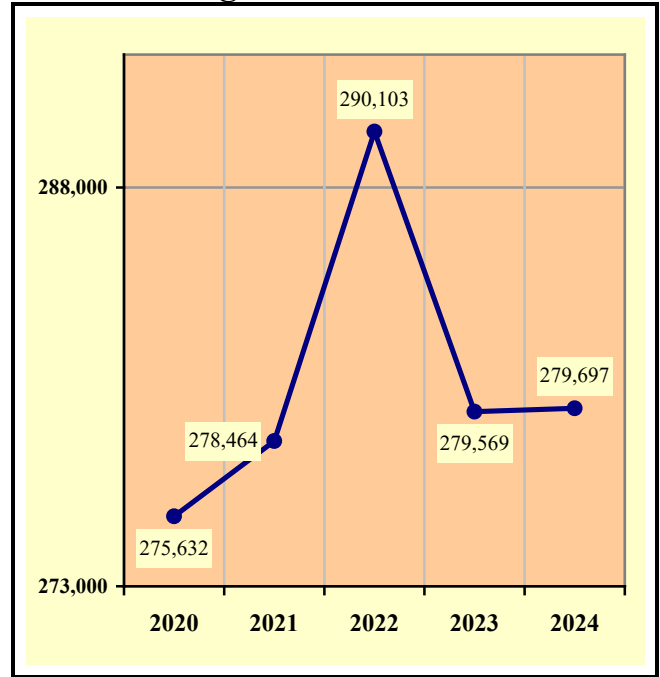


Chart 8 – 2
MC Registrations in Arizona



Total Point-in-Time of Registered Motorcycles at the end of
Calendar year 2024.
(Source: MVD - Currently Registered Vehicles by County Listing (motorcycle
sub category), reports dated 12/31/2024.)

Chart 8 – 3
Fatality Rate per Registered MC

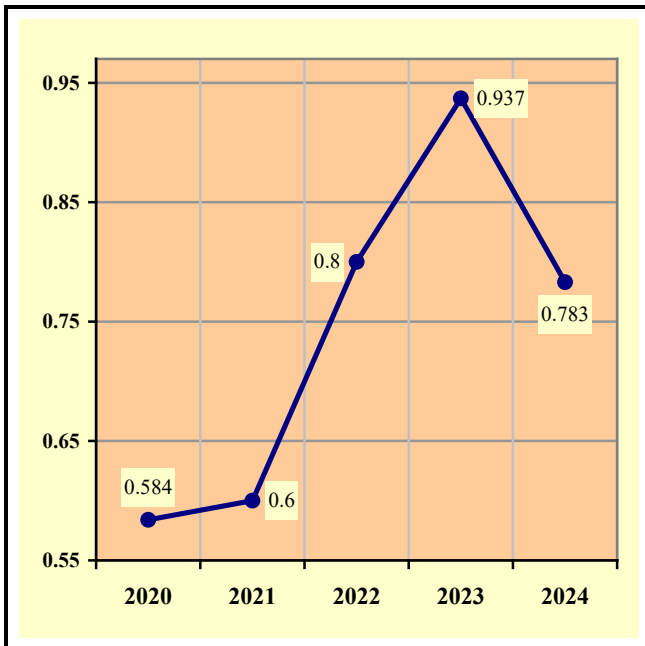
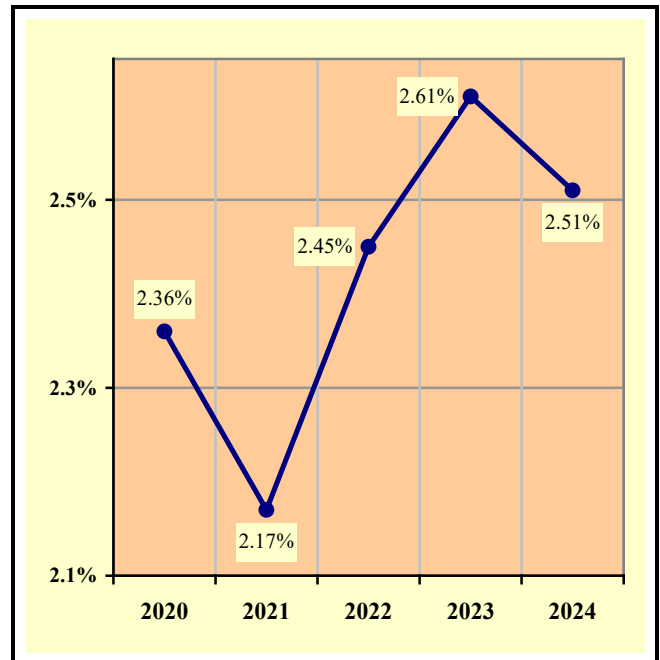


Chart 8 – 4
Percent of MC Crashes to All Crashes



Section 8: – Motorcycle (MC) Crashes

Table 8 – 1
MC Crashes by First Harmful Event

First Harmful Event Type	Number of Crashes			
	Total	Fatal	Injury	PDO
Collision with Motor Vehicle in Transport	1,952	135	1,460	357
Overtaking	522	25	459	38
Collision with Pedestrian	13	1	12	0
Collision with Bicyclist	3	0	3	0
Collision with Animal	24	0	22	2
Collision with Fixed Object	372	51	301	20
Collision with Non-fixed Object*	142	2	113	27
Vehicle Fire or Explosion	4	0	2	2
Other Non-collision**	0	0	0	0
Unknown	4	4	0	0
TOTAL	3,036	218	2,372	446
*Includes Collision with Parked Vehicles, Trains, Railway Vehicles, and Work Zone Equipment				
**Includes Vehicle Immersion, Jackknife, and Cargo Loss or Shift				

Table 8 – 2
Lighting Conditions in MC Crashes

Type of Lighting Conditions	Number of Crashes			
	Total	Fatal	Injury	PDO
Daylight	2,034	128	1,608	298
Dawn	48	4	31	13
Dusk	109	5	88	16
Dark - Lighted	652	55	497	100
Dark - Not Lighted	170	14	138	18
Dark - Unknown Lighting	14	5	8	1
Unknown	9	7	2	0
TOTAL	3,036	218	2,372	446

Table 8 – 3
Road Surface Conditions in MC Crashes

Type of Road Surface Condition	Number of Operators			
	Total	In Fatal Crashes	In Injury Crashes	In PDO Crashes
Dry	2,970	209	2,332	429
Wet	59	1	49	9
Snow/Slush	3	0	2	1
Ice/Frost	1	0	1	0
Water (standing or moving)	0	0	0	0
Mud, Dirt, Gravel, Sand	33	2	26	5
Other	7	0	7	0
Unknown	31	15	5	11
TOTAL	3,104	227	2,422	455

Section 8: – Motorcycle (MC) Crashes

Table 8 – 4

MC Crashes by Geographic Location

Category	Total	Urban	Percent of Total	Rural	Percent of Total
Total Crashes	3,036	2,443	80.47%	593	19.53%
Fatal Crashes	218	163	74.77%	55	25.23%
Injury Crashes	2,372	1,902	80.19%	470	19.81%
PDO Crashes	446	378	84.75%	68	15.25%
Persons Killed	219	163	74.43%	56	25.57%
Persons Injured	2,503	1,987	79.38%	516	20.62%

Table 8 – 5

Operator Involvement by Age in MC Crashes

Operator Age Group	Number of Operators							
	Total	Percent of Total	In Fatal Crashes	Percent of Fatal	In Injury Crashes	Percent of Injury	In PDO Crashes	Percent of PDO
15 & Under	40	1.29%	2	0.88%	32	1.32%	6	1.32%
16	18	0.58%	0	0.00%	16	0.66%	2	0.44%
17	46	1.48%	3	1.32%	39	1.61%	4	0.88%
18	86	2.77%	6	2.64%	71	2.93%	9	1.98%
19	109	3.51%	7	3.08%	87	3.59%	15	3.30%
20	132	4.25%	5	2.20%	111	4.58%	16	3.52%
21	130	4.19%	11	4.85%	108	4.46%	11	2.42%
22	106	3.41%	9	3.96%	84	3.47%	13	2.86%
23	96	3.09%	4	1.76%	77	3.18%	15	3.30%
24	103	3.32%	8	3.52%	77	3.18%	18	3.96%
25-34	684	22.04%	43	18.94%	561	23.16%	80	17.58%
35-44	473	15.24%	38	16.74%	378	15.61%	57	12.53%
45-54	371	11.95%	25	11.01%	297	12.26%	49	10.77%
55-64	362	11.66%	32	14.10%	278	11.48%	52	11.43%
65-74	196	6.31%	25	11.01%	145	5.99%	26	5.71%
75 & Older	54	1.74%	8	3.52%	41	1.69%	5	1.10%
Unknown	98	3.16%	1	0.44%	20	0.83%	77	16.92%
TOTAL	3,104	100.00%	227	100.00%	2,422	100.00%	455	100.00%

Table 8 – 6

MC Operator Physical Condition

Type of Condition	Number of Operators							
	Total	Percent of Total	In Fatal Crashes	Percent of Fatal	In Injury Crashes	Percent of Injury	In PDO Crashes	Percent of PDO
No Apparent Influence	2,575	82.96%	75	33.04%	2,139	88.32%	361	79.34%
Alcohol	139	4.48%	43	18.94%	88	3.63%	8	1.76%
Illegal Drugs	34	1.10%	28	12.33%	6	0.25%	0	0.00%
Medications	1	0.03%	0	0.00%	1	0.04%	0	0.00%
Marijuana	34	1.10%	29	12.78%	5	0.21%	0	0.00%
Illness or Physical Impairment	9	0.29%	0	0.00%	8	0.33%	1	0.22%
Fell Asleep or Fatigued	3	0.10%	0	0.00%	3	0.12%	0	0.00%
Other	5	0.16%	0	0.00%	4	0.17%	1	0.22%
Unknown	304	9.79%	52	22.91%	168	6.94%	84	18.46%
TOTAL	3,104	100.00%	227	100.00%	2,422	100.00%	455	100.00%

Section 8: – Motorcycle (MC) Crashes

Table 8 – 7

MC Operator's Helmet Use

Severity of Injury	Helmet Used	Percent of Total	Helmet Not Used	Percent of Total	Unknown	Percent of Total	Total	Percent of Total
No Injury	244	13.76%	42	8.50%	145	17.32%	431	13.89%
Unknown Injury	20	1.13%	6	1.21%	57	6.81%	83	2.67%
Possible Injury	247	13.93%	53	10.73%	107	12.78%	407	13.11%
Suspected Minor Injury	756	42.64%	192	38.87%	329	39.31%	1,277	41.14%
Suspected Serious Injury	380	21.43%	138	27.94%	173	20.67%	691	22.26%
Fatal Injury	126	7.11%	63	12.75%	26	3.11%	215	6.93%
TOTALS	1,773	100.00%	494	100.00%	837	100.00%	3,104	100.00%

Table 8 – 8

MC Passenger's Helmet Use

Severity of Injury	Helmet Used	Percent of Total	Helmet Not Used	Percent of Total	Unknown	Percent of Total	Total	Percent of Total
No Injury	11	15.49%	5	11.63%	7	15.91%	23	14.56%
Unknown Injury	1	1.41%	1	2.33%	1	2.27%	3	1.90%
Possible Injury	5	7.04%	6	13.95%	7	15.91%	18	11.39%
Suspected Minor Injury	38	53.52%	12	27.91%	18	40.91%	68	43.04%
Suspected Serious Injury	14	19.72%	17	39.53%	11	25.00%	42	26.58%
Fatal Injury	2	2.82%	2	4.65%	0	0.00%	4	2.53%
TOTALS	71	100.00%	43	100.00%	44	100.00%	158	100.00%

Table 8 – 9

Helmet Use by Gender

Gender	Number of Operators and Passengers							Percent of Total
	Helmet Used	Percent of Helmet Used	Helmet Not Used	Percent of Helmet Not Used	Helmet Use Unknown	Percent of Unknown	Total	
Male	1,622	87.96%	480	89.39%	720	81.73%	2,822	86.51%
Female	216	11.71%	56	10.43%	103	11.69%	375	11.50%
Unknown	6	0.33%	1	0.19%	58	6.58%	65	1.99%
TOTAL	1,844	100.00%	537	100.00%	881	100.00%	3,262	100.00%

Section 8: – Motorcycle (MC) Crashes

Table 8 – 10

MC Operators and Passengers Killed and Injured

Age of Victim	Persons Killed			Persons Injured			
	Total	Male	Female	Total	Male	Female	Gender Unknown
0-4	0	0	0	0	0	0	0
5-9	0	0	0	3	2	1	0
10-14	0	0	0	16	14	2	0
15-19	17	16	1	240	214	26	0
20-24	37	35	2	464	420	44	0
25-34	43	40	3	573	516	57	0
35-44	37	37	0	397	340	57	0
45-54	23	21	2	315	268	47	0
55-64	30	29	1	294	243	51	0
65-74	25	24	1	145	125	20	0
75 & Older	7	7	0	40	39	1	0
Unknown	0	0	0	16	11	2	3
TOTAL	219	209	10	2,503	2,192	308	3

Table 8 – 11

MC Operator Violations

Type of Violation or Behavior	Number of Operators							
	Total	Percent of Total	In Fatal Crashes	Percent of Fatal	In Injury Crashes	Percent of Injury	In PDO Crashes	Percent of PDO
No Improper Action	1,397	45.01%	65	28.63%	1,130	46.66%	202	44.40%
Speed too Fast for Conditions	623	20.07%	38	16.74%	526	21.72%	59	12.97%
Exceeded Lawful Speed	71	2.29%	21	9.25%	49	2.02%	1	0.22%
Failed to Yield Right-Of-Way	88	2.84%	4	1.76%	65	2.68%	19	4.18%
Followed Too Closely	89	2.87%	2	0.88%	67	2.77%	20	4.40%
Ran Stop Sign	19	0.61%	4	1.76%	14	0.58%	1	0.22%
Disregarded Traffic Signal	68	2.19%	13	5.73%	49	2.02%	6	1.32%
Made Improper Turn	30	0.97%	1	0.44%	24	0.99%	5	1.10%
Drove Left of Center Line	39	1.26%	8	3.52%	29	1.20%	2	0.44%
Passed in No-Passing Zone	15	0.48%	2	0.88%	10	0.41%	3	0.66%
Unsafe Lane Change	84	2.71%	5	2.20%	57	2.35%	22	4.84%
Failed to Keep in Proper Lane	167	5.38%	21	9.25%	118	4.87%	28	6.15%
Crossed Median	1	0.03%	0	0.00%	1	0.04%	0	0.00%
Aggressive Driving	14	0.45%	3	1.32%	10	0.41%	1	0.22%
Wrong Way Driving	6	0.19%	1	0.44%	4	0.17%	1	0.22%
Other	98	3.16%	4	1.76%	74	3.06%	20	4.40%
Unknown	295	9.50%	35	15.42%	195	8.05%	65	14.29%
TOTAL	3,104	100.00%	227	100.00%	2,422	100.00%	455	100.00%

Section 8: – Motorcycle (MC) Crashes

Chart 8 – 5

All MC Crashes vs. Fatal MC Crashes by Time of Day - Weekdays

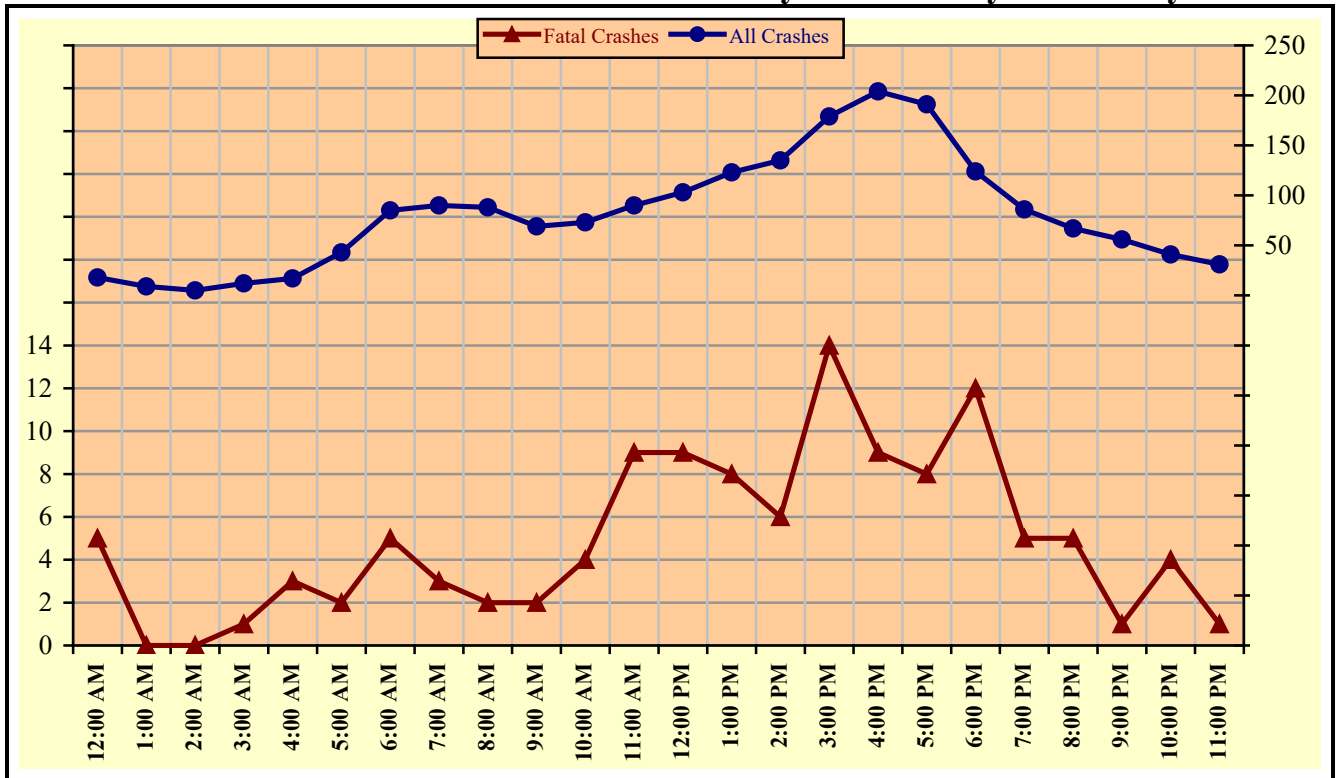
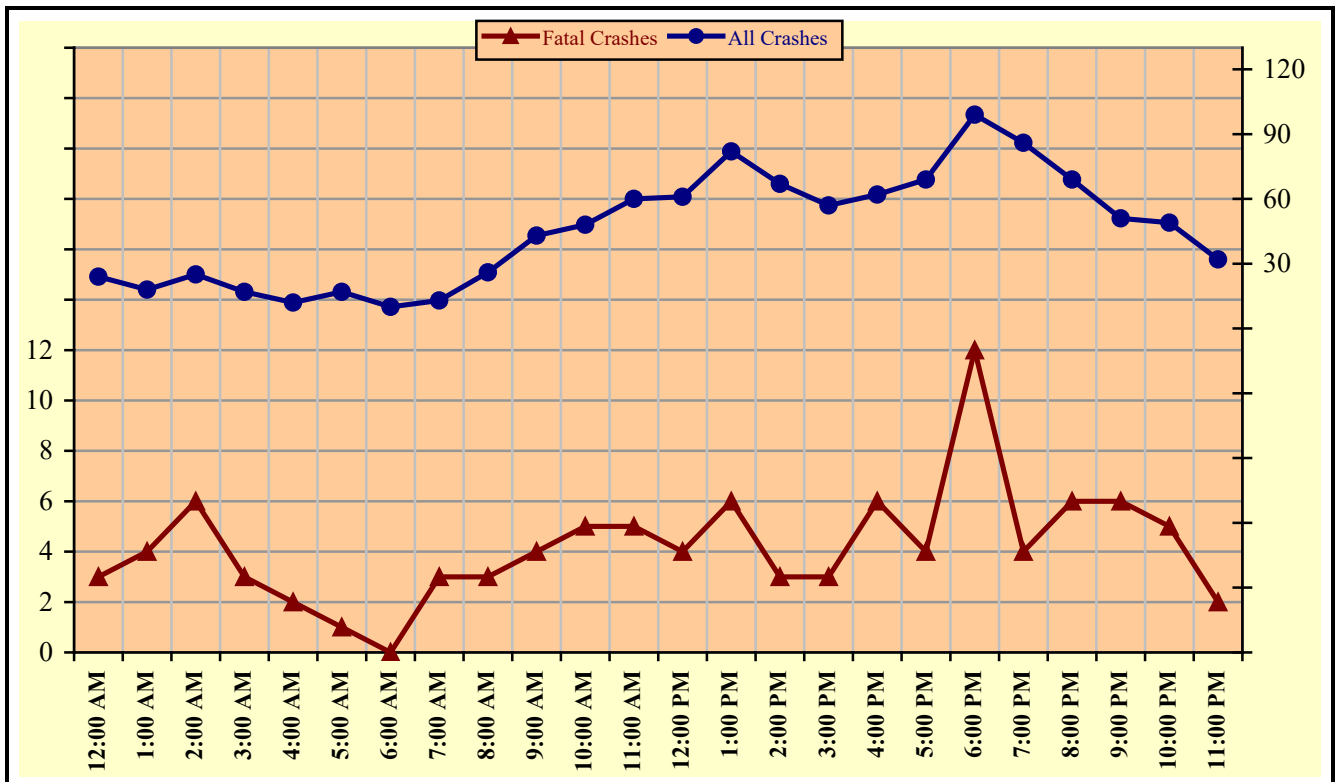


Chart 8 – 6

All MC Crashes vs. Fatal MC Crashes by Time of Day - Weekends



Section 8: – Motorcycle (MC) Crashes

Chart 8 – 7
All MC Crashes vs. Fatal MC Crashes by Day of Week

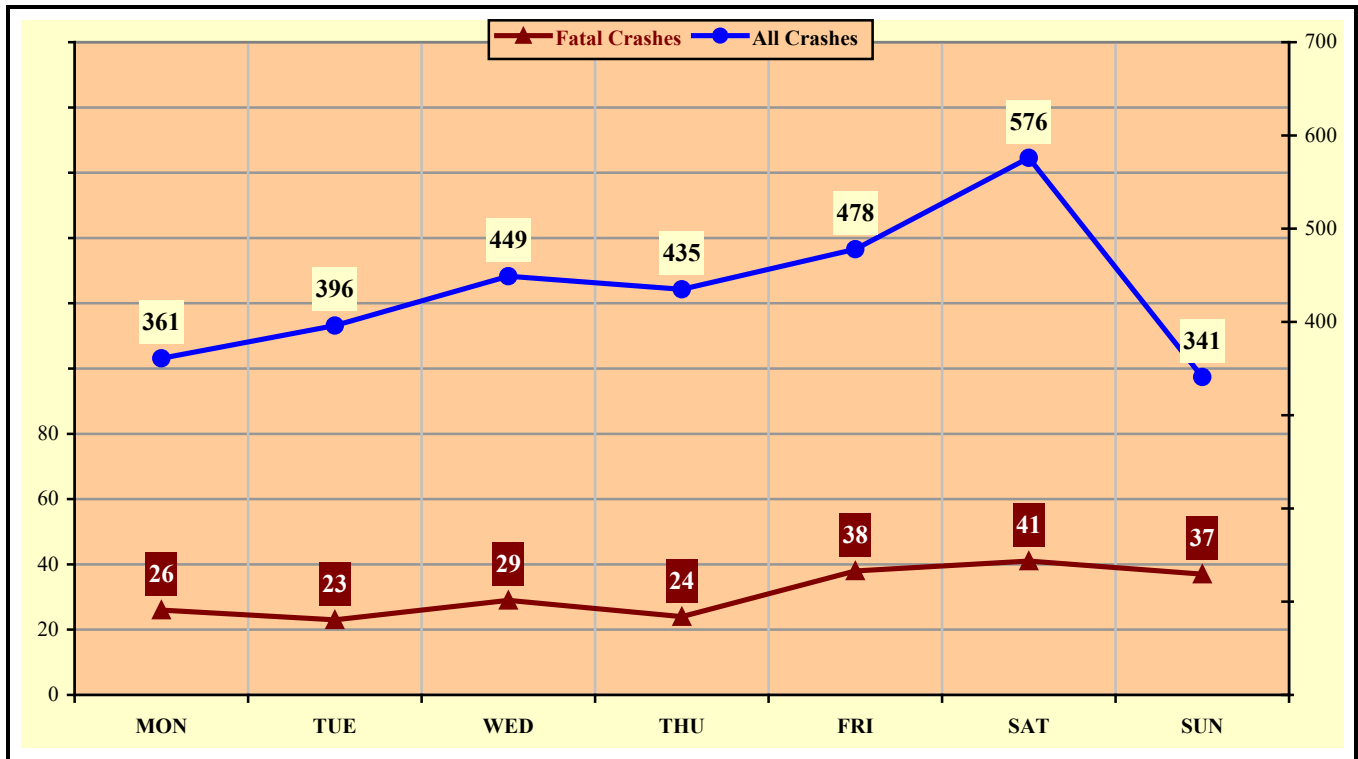
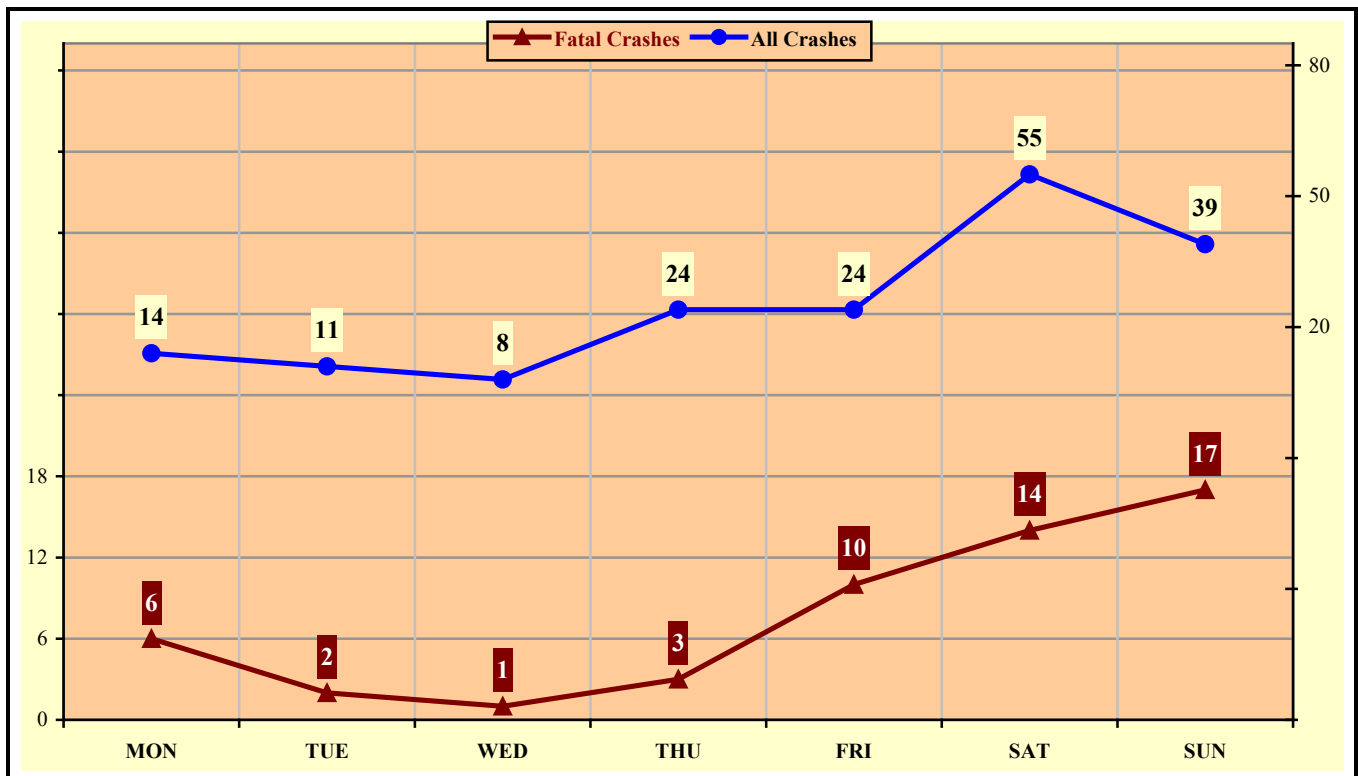


Chart 8 – 8
Alcohol Related MC Crashes vs. Fatal Alcohol Related MC Crashes by Day of Week



Section 8: – Motorcycle (MC) Crashes

Table 8 – 12
MC Crashes by Hour and Day of Week

Hour Beginning	Total Crashes		Monday		Tuesday		Wednesday		Thursday		Friday		Saturday		Sunday		Weekdays		Weekends	
	All	Fatal	All	Fatal	All	Fatal	All	Fatal	All	Fatal	All	Fatal	All	Fatal	All	Fatal	All	Fatal	All	Fatal
12:00 AM	42	8	5	0	1	0	6	3	6	1	5	1	10	2	9	1	18	5	24	3
1:00 AM	27	4	0	0	2	0	2	0	2	0	3	0	7	2	11	2	9	0	18	4
2:00 AM	30	6	5	2	3	0	0	0	1	0	1	0	12	3	8	1	5	0	25	6
3:00 AM	29	4	5	2	4	0	1	0	6	1	1	0	5	0	7	1	12	1	17	3
4:00 AM	29	5	4	0	3	0	2	0	6	1	6	2	6	1	2	1	17	3	12	2
5:00 AM	60	3	9	0	12	0	15	1	6	0	10	1	5	0	3	1	43	2	17	1
6:00 AM	95	5	15	1	21	1	21	2	19	1	9	0	5	0	5	0	85	5	10	0
7:00 AM	103	6	19	1	15	0	26	1	17	1	13	0	9	1	4	2	90	3	13	3
8:00 AM	114	5	19	0	16	1	16	0	22	1	15	0	17	2	9	1	88	2	26	3
9:00 AM	112	6	13	0	8	0	12	0	18	2	18	0	25	4	18	0	69	2	43	4
10:00 AM	121	9	19	2	12	0	10	0	13	0	19	2	35	3	13	2	73	4	48	5
11:00 AM	150	14	21	0	19	3	17	2	17	1	16	3	36	3	24	2	90	9	60	5
12:00 PM	164	13	20	1	17	2	28	1	19	4	19	1	44	3	17	1	103	9	61	4
1:00 PM	205	14	21	2	27	2	25	2	25	1	25	1	52	2	30	4	123	8	82	6
2:00 PM	202	9	32	2	17	0	34	0	23	1	29	3	42	1	25	2	135	6	67	3
3:00 PM	236	17	23	1	32	2	43	6	37	2	44	3	36	1	21	2	179	14	57	3
4:00 PM	266	15	24	1	42	3	39	2	52	0	47	3	34	0	28	6	204	9	62	6
5:00 PM	260	12	28	2	39	2	39	3	39	1	46	0	47	3	22	1	191	8	69	4
6:00 PM	223	24	23	4	28	2	44	2	29	4	38	5	41	4	20	3	124	12	99	12
7:00 PM	172	9	17	1	19	2	23	1	27	1	32	2	31	2	23	0	86	5	86	4
8:00 PM	136	11	14	3	21	2	19	0	13	0	29	5	28	0	12	1	67	5	69	6
9:00 PM	107	7	11	0	19	0	8	0	18	1	14	2	21	2	16	2	56	1	51	6
10:00 PM	90	9	10	1	9	1	10	2	12	0	23	3	15	1	11	1	41	4	49	5
11:00 PM	63	3	4	0	10	0	9	1	8	0	16	1	13	1	3	0	31	1	32	2
TOTAL	3,036	218	361	26	396	23	449	29	435	24	478	38	576	41	341	37	1,939	118	1,097	100

Crashes during Weekends accounted for 36.13% of all MC crashes and 45.87% of Fatal MC Crashes.

Section 8: – Motorcycle (MC) Crashes

Table 8 – 13

MC Crashes by County

County	Number of Crashes				Number of Persons	
	Total	Fatal	Injury	PDO	Killed	Injured
Apache	7	1	3	3	1	4
Cochise	54	4	44	6	6	49
Coconino	68	3	52	13	3	56
Gila	51	3	41	7	3	49
Graham	10	1	6	3	1	7
Greenlee	8	0	8	0	0	8
La Paz	10	2	6	2	1	8
Maricopa	1,960	123	1,523	314	123	1,586
Mohave	148	9	124	15	9	133
Navajo	24	0	19	5	0	20
Pima	274	31	212	31	31	223
Pinal	202	19	161	22	19	171
Santa Cruz	7	1	5	1	1	5
Yavapai	140	17	110	13	17	122
Yuma	73	4	58	11	4	62
TOTAL	3,036	218	2,372	446	219	2,503

Maricopa and Pima Counties accounted for 70.32% of MC fatalities.

Table 8 – 14

Manner of Collision in MC Crashes

Manner of Collision Type	Number of Crashes							
	Total	Percent of All Crashes	Fatal	Percent of Fatal Crashes	Injury	Percent of Injury Crashes	PDO	Percent of PDO Crashes
Angle	391	19.24%	31	21.53%	308	20.34%	52	13.90%
Left Turn	518	25.49%	56	38.89%	406	26.82%	56	14.97%
Rear End	546	26.87%	17	11.81%	415	27.41%	114	30.48%
Head-On	48	2.36%	7	4.86%	34	2.25%	7	1.87%
Sideswipe (same)	348	17.13%	15	10.42%	220	14.53%	113	30.21%
Sideswipe (opposite)	32	1.57%	1	0.69%	24	1.59%	7	1.87%
U-Turn	40	1.97%	2	1.39%	29	1.92%	9	2.41%
Other*	94	4.63%	12	8.33%	69	4.56%	13	3.48%
Unknown	15	0.74%	3	2.08%	9	0.59%	3	0.80%
TOTAL	2,032	100.00%	144	100.00%	1,514	100.00%	374	100.00%
Note: Includes only multi-unit MC crashes								
*Other includes pedestrian and bicycle crashes								

Acknowledgements

Special gratitude to our other providers of data and information including:

The Information Technology Group, Arizona Department of Transportation

Motor Vehicle Division, Arizona Department of Transportation

Multimodal Planning Division, Arizona Department of Transportation

The Federal Highway Administration, U.S. Department of Transportation

National Highway Transportation Safety Administration