

MAINTENANCE UNIT BOUNDARIES

YUMA MAINTENANCE

Supervisor: Ramiro Sandoval 928.317.2124

I-8	MP 0 — 79.86
US 95	MP 0— 0.6, 29.3-70.7
SR 195	MP 5.5 — 27

QUARTZSITE MAINTENANCE

Supervisor: Robert Ortiz 928.927.6311

I-10	MP 0 — 52
SR 72	MP 13.1 — 49.9
US/SR 95	MP 70.7 — 161.77
US 60	MP 31.26 — 49.57
SR 95 Spur	MP 143.8 — 144.8
SR 95 Spur	MP 158.7 — 159.5

GILA BEND MAINTENANCE

Supervisor: Cameron Mendoza 928.683.2582

I-8	MP 79.87 — 147.79
SR 85	MP 120.3 — 148.5
SR 85 South	MP 0 — 32.51

TONOPAH MAINTENANCE

Supervisor: Sal Mata 602.712.2141

I-10	MP 52— 113.41
SR 85	MP 148.5— 155.04

ADOT

MISSION

We provide
highway
infrastructure
and
transportation
services

VISION

To safely
connect people
and empower
our economy

VALUES

Easy to
work with,
collaborative,
results
focused

TRAFFIC INCIDENT MANAGEMENT:

QUICK CLEARANCE

FENDER BENDER?

If you're in a minor or non-injury crash and your vehicle is operable, move it out of travel lanes.

Move your vehicle to the side of the road and inspect it there — not in dangerous travel lanes.

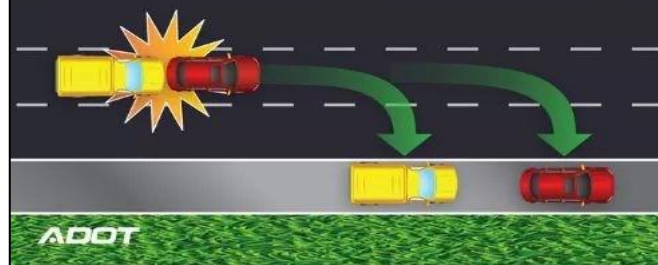
Often, a primary crash leads to a traffic backup and increases the risk of a secondary crash, which can be more severe than the original collision.

Vehicles involved in a non-injury crash that remain operable, according to Arizona law, must be removed from the roadway.

Emergency responders — police, fire, tow truck operators, etc. — need a safe place to work, too. On average, a tow truck operator is struck and killed every six days in the U.S.

Why move your vehicle out of travel lanes?

- Driver Safety
- Traveler Safety
- Responder Safety
- It's the Law! A.R.S. 28-674



ARIZONA
— DEPARTMENT OF —
TRANSPORTATION

SOUTHWEST DISTRICT

July-Sept. 2025

CURRENT CONSTRUCTION PROJECTS

Interstate 10	Salome Road-Tonopah
Type of Project:	Pavement Preservation
Contractor:	Fisher Sand & Gravel Co.
Status:	79% Complete
Contract Amount:	\$19,625,527
State Route 95	Tyson St.-N. of Quartzsite
Type of Project:	Pavement Preservation
Contractor:	FNF Construction, Inc.
Status:	102% Complete
Contract Amount:	\$7,897,037
Statewide	Road Weather Info System
Type of Project:	Road Weather Information System Upgrade
Contractor:	Roadway Electric, LLC.
Status:	0% Complete
Contract Amount:	\$1,891,037
Yuma County	Centerline Rumble Strip & Pavement Markings
Type of Project:	Rumble Strip & Pavement Markings
Contractor:	Pavement Marking, LLC.
Status:	75% Complete
Contract Amount:	\$1,301,490
Yuma County	County 14th St & Ave 4E
Type of Project:	Traffic Signal & Turn Lanes
Contractor:	DPE Construction, Inc.
Status:	0% Complete
Contract Amount:	\$1,150,000
State Route 72	MP 20.44-SE Bouse (MP 30)
Type of Project:	Pavement Preservation
Contractor:	FNF Construction, Inc.
Status:	0% Complete
Contract Amount:	\$8,279,863

CURRENT CONSTRUCTION PROJECTS

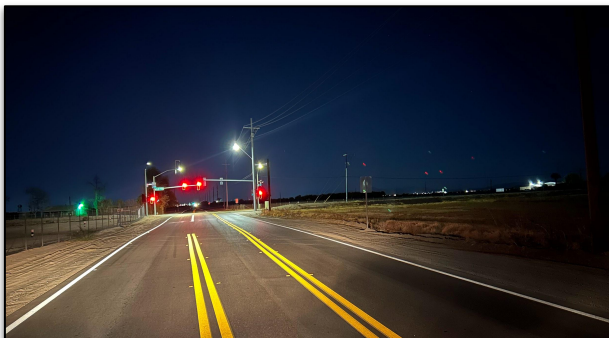
Yuma County	Co. 11th Street & Ave G
Type of Work:	Curve Realignment
Contractor:	TBD
Status:	0% Complete
Contract Amount:	TBD

UPCOMING CONSTRUCTION

PROJECT	ADVERTISE
Cesar Chavez Boulevard Roadway Widening	FY 26
City of Yuma Pedestrian Hybrid Beacons Install Ped Hybrid Beacons @ 2 Locations	FY 26
City of Yuma Pedestrian Hybrid Beacons Install Ped Hybrid Beacons @ 2 Locations	FY 26
Statewide POE Sign Replacement Sign Replacement at POE Locations	FY 26
Yuma County Co. 14th St & Ave C Traffic Signal Installation	FY 26

CURRENT MAINTENANCE PROJECTS

PROJECT	DATES
District wide Hydro Vacuum & Pipe Lining	July/Aug 2025
SR 85 Buckeye Hills Dr. Cattle guard Installation	Aug 2025
I-8, MP 46-67 Shoulder Build-up	Aug/Sept 2025
SR 95, MP 120-131 Shoulder Build-up	Aug/Sept 2025
SR 72, MP 30-49.91 Shoulder Build-up	Aug/Sept 2025



SOUTHWEST DISTRICT

Paul Patane	District Administrator
Jon Fell	Assistant District Engineer
Jaime Hernandez	Senior Resident Engineer
Micah Hannam	Resident Engineer (Consultant)
Timothy Mitchell	Operations Superintendent
Stephanie Dyer	Community Relations Manager
David Basoco	Permits Supervisor
Isabell Garcia	Development TES
Frank Felix	Traffic Analyst
Ingrid Cubillos	Environmental Coordinator

District Office

2243 E Gila Ridge Road | Yuma, AZ 85365
Phone: 928.317.2101 Fax: 928.317.2107

Construction Office

2243 E. Gila Ridge Road | Yuma, AZ 85365
Phone: 928.317.2150

Southwest District Contacts

azdot.gov/contacts-southwest-district

Project Information Hotline 1.855.712.8530

AZ 5-1-1

Updates Arizona's Road Conditions Every 5 Minutes

az511.com Click on 'Closures'

Or Call: 1.888.411.ROAD (7623)



Download the free AZ511 Mobile App:



ARIZONA