

# Anonymous Self-ID Survey

While you wait, we invite you to complete a voluntary survey to help ADOT understand who attends its public meetings and how the department can improve participation.

**English:** <https://forms.gle/oQfz4f1FYY5pW6HP9>

Mientras espera, lo invitamos a completar una encuesta voluntaria para ayudar a ADOT a comprender quiénes asisten a sus reuniones públicas y como podrá mejorar la participación de miembros de minorías.

**Espanol:** <https://forms.gle/LMD5ABSw9uUvRsEt7>





# I-10/Koli Road Traffic Interchange Study

Draft Environmental Assessment (EA) and Design Memo (DM)

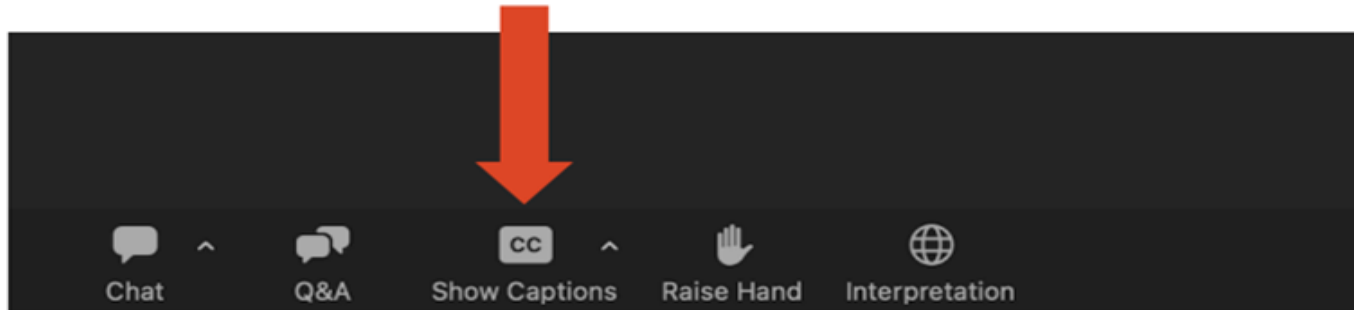
## Virtual Public Hearing

Date: July 30, 2025



# Welcome to the I-10/Koli Road Traffic Interchange Study Public Hearing

- All participants have been muted to avoid background noise.
- This meeting is being recorded.
- Technical difficulties? Call Zoom at 888.799.9666
- Following the meeting presentation, we will take questions, and then facilitate the formal public comment period.
- To turn on closed captioning select that option from the menu.



# Spanish Language Access Instructions

## Instrucciones de acceso al idioma español

<b>1. Open “Interpretation” Menu</b> <b>Abre el menú “interpretación”.</b>		
<b>On a desktop or laptop</b> <b>En una computadora o una computadora portátil</b>  Hover at the bottom of the screen to see the toolbar and click on the Interpretation icon toolbar. Ponga el cursor en la parte de abajo de la pantalla para ver la barra de herramientas y haga clic en el ícono que dice “Interpretation”.	<b>On an iPad</b> <b>En un iPad</b>  Press the three dots on the upper right corner to access the menu and select Language Interpretation. Presione los tres puntos del menú arriba a la derecha y seleccione “Language Interpretation”.	<b>On an iPhone</b> <b>En un iPhone</b>  Press the three dots (More) on the lower right corner to access the menu. Presione los tres puntos del menú “More” abajo a la derecha.
<b>2. Select your preferred language.</b> <b>Seleccione el idioma de su preferencia.</b>		
<b>3. If you don’t want to hear the original language in the background, click on Mute Original Audio.</b> <b>Si no quiere escuchar el idioma original en el fondo, haga clic en “Mute Original Audio”.</b>		

# ADOT's Nondiscrimination Notice to the Public

Pursuant to Title VI of the Civil Rights Act of 1964, the Americans with Disabilities Act (ADA) and other nondiscrimination laws and authorities, the Arizona Department of Transportation (ADOT) does not discriminate on the basis of race, color, national origin, sex, age, or disability. Persons that require a reasonable accommodation based on language or disability should contact Marcy McMacken at 855.712.8530 or [mmcmacken@azdot.gov](mailto:mmcmacken@azdot.gov). Requests should be made as early as possible to ensure the State has an opportunity to address the accommodation.

De acuerdo con el Título VI de la Ley de Derechos Civiles de 1964, la Ley de Estadounidenses con Discapacidades (ADA por sus siglas en inglés) y otras normas y leyes antidiscriminatorias, el Departamento de Transporte de Arizona (ADOT) no discrimina por motivos de raza, color, origen nacional, sexo, edad o discapacidad. Las personas que requieran asistencia (dentro de lo razonable) ya sea por el idioma o discapacidad deben ponerse en contacto con Marcy McMacken al 855.712.8530 o por correo electrónico al [mmcmacken@azdot.gov](mailto:mmcmacken@azdot.gov). Las solicitudes deben hacerse lo más antes posible para asegurar que el Estado tenga la oportunidad de hacer los arreglos necesarios.

# Tonight's Presenters



**Trent Kelso, PE**  
ADOT I-10 Corridor Manager  
tkelso@azdot.gov



**Marcy McMacken**  
Community Outreach Manager/Public Information Officer  
mmcmacken@azdot.gov

# Virtual Public Hearing Schedule

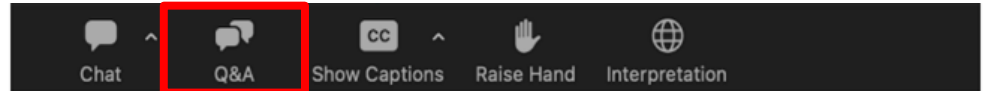
5:30 to 6:00 p.m.  
**Formal Public Hearing**  
**Formal Presentation**

6:00 p.m.  
**Questions & Answers**

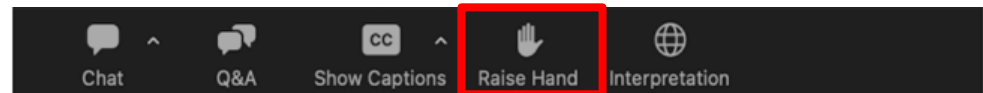
6:15 to 7:00 p.m.  
**Formal Comment**  
**Period**

## How to Submit Questions

- Option 1: Please click on the Q&A icon to submit any questions you have during this presentation.



- Option 2: Please click on the Raise Hand icon during the Question part of the presentation.



# Tonight's Agenda

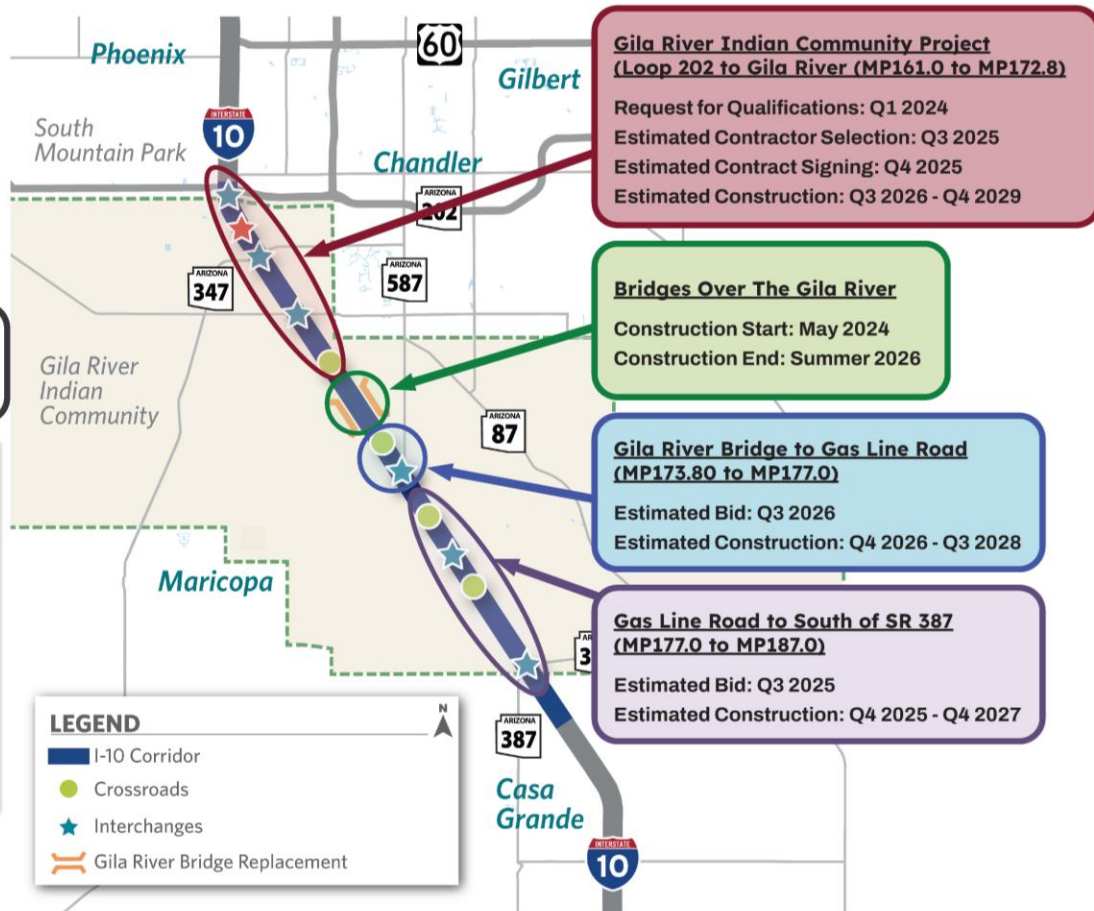
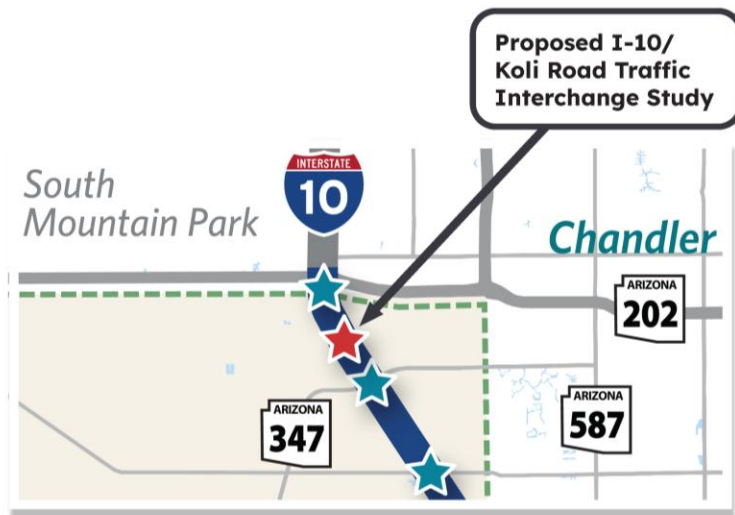
- 1 Project overview and study area
- 2 Environmental process, NEPA requirements, and purpose and need
- 3 Alternative selection process
- 4 Funding
- 5 Next steps and implementation
- 6 Formal public comment period



# **1.** Project Overview and Study Area

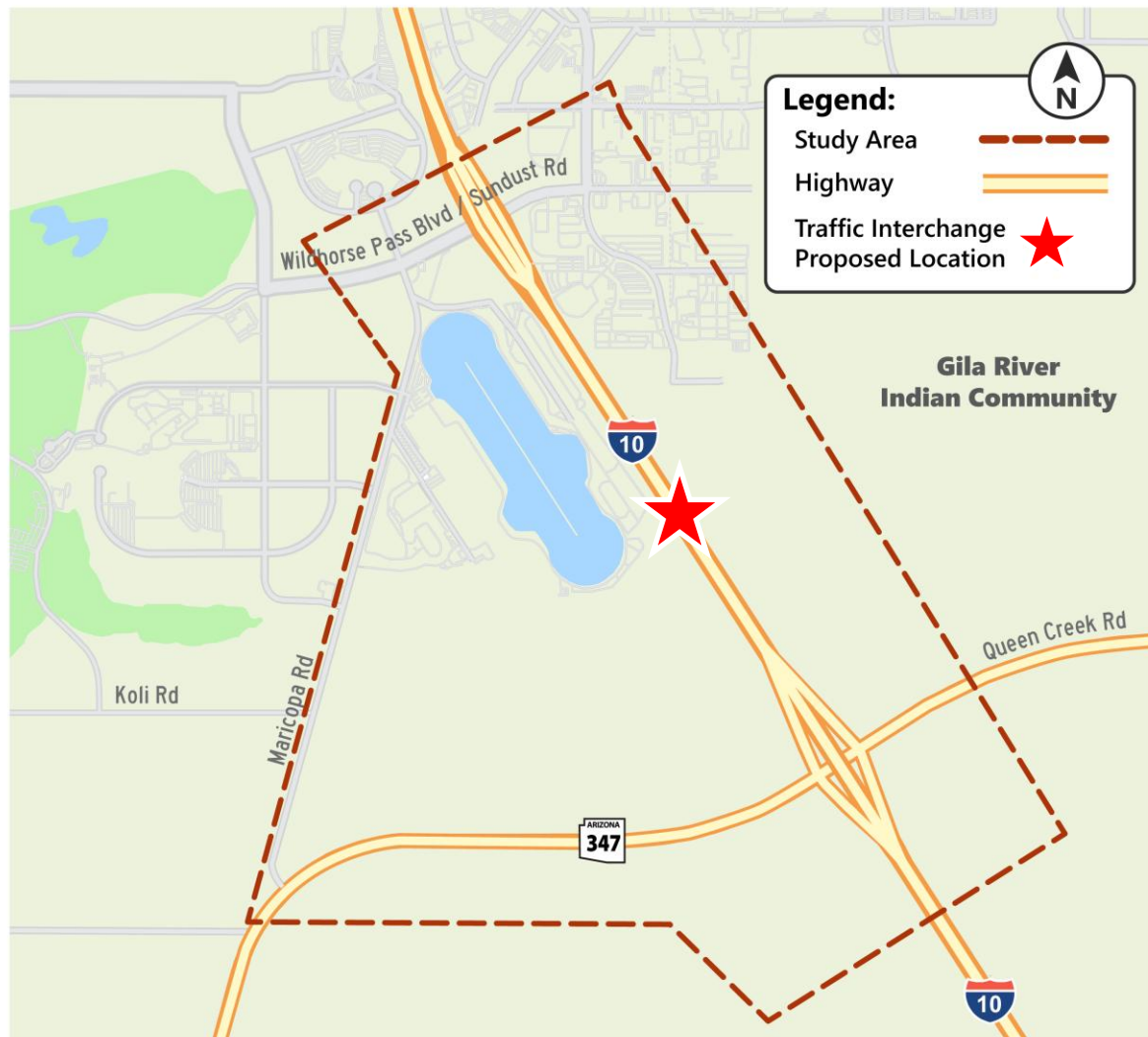


# I-10 Wild Horse Pass Corridor



# Study Area

- **Study Focus:**  
Proposed new traffic interchange along I-10.
- **Location:**  
In Maricopa County  
within Gila River Indian Community.



## **2. Environmental Process, NEPA Requirements, and Purpose and Need**



# NEPA Requirements

- The National Environmental Policy Act (NEPA) requires agencies to analyze, disclose, and identify potential measures to avoid, minimize, or mitigate adverse environmental impacts.
- An Environmental Assessment (EA) is the NEPA-level document being prepared to evaluate the potential impacts of the I-10/Koli Road Traffic Interchange project.
- The EA describes the need for the proposed action, alternatives developed for the proposed action, and the environmental impacts of the Recommended Build Alternative and the No-Build Alternative.

# NEPA Disclosure

The environmental review, consultation, and other actions required by applicable Federal environmental laws for this project are being or have been carried out by ADOT pursuant to 23 U.S.C. 327 and a Memorandum of Understanding dated June 25, 2024, and executed by the Federal Highway Administration and ADOT.

# Purpose and Need for Study

The **purpose** of the proposed I-10/Koli Road TI is to:

-  **1.** Provide efficient access to the Community to and from I-10
-  **2.** Improve emergency vehicle response time from the Community Fire Station
-  **3.** Improve Traffic Management on I-10 during incidents
-  **4.** Accommodate growth in population

The proposed I-10/Koli Road TI is **needed** to address:

-  **1.** Less than efficient access to Community land
-  **2.** Inadequate emergency vehicle response times during special event
-  **3.** Substantial traffic management issues on I-10 during incidents
-  **4.** Substantial visitor population and employment



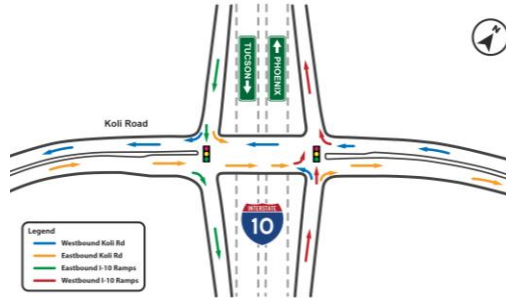


# Alternatives Evaluated

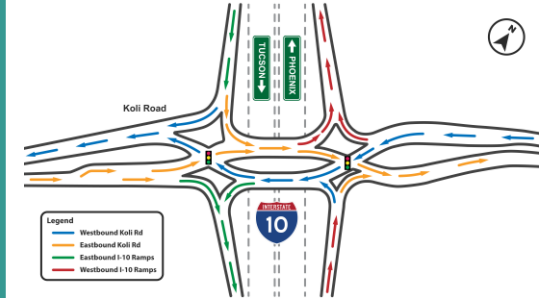
## No-Build

- No improvements are made.
- Maintenance only
- Baseline for comparison.

## Diamond Interchange

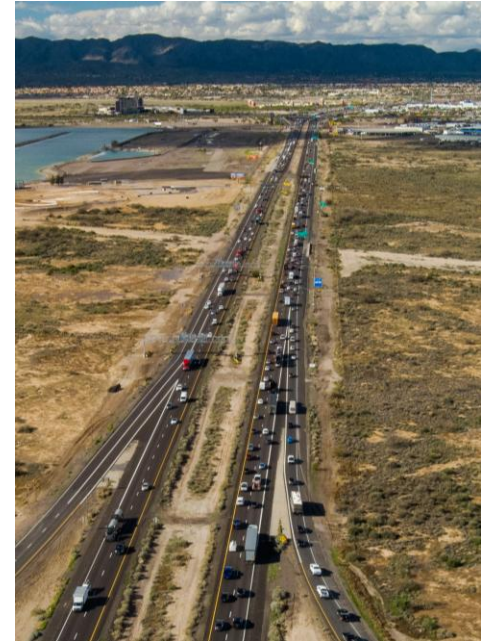


## Diverging Diamond Interchange (DDI)



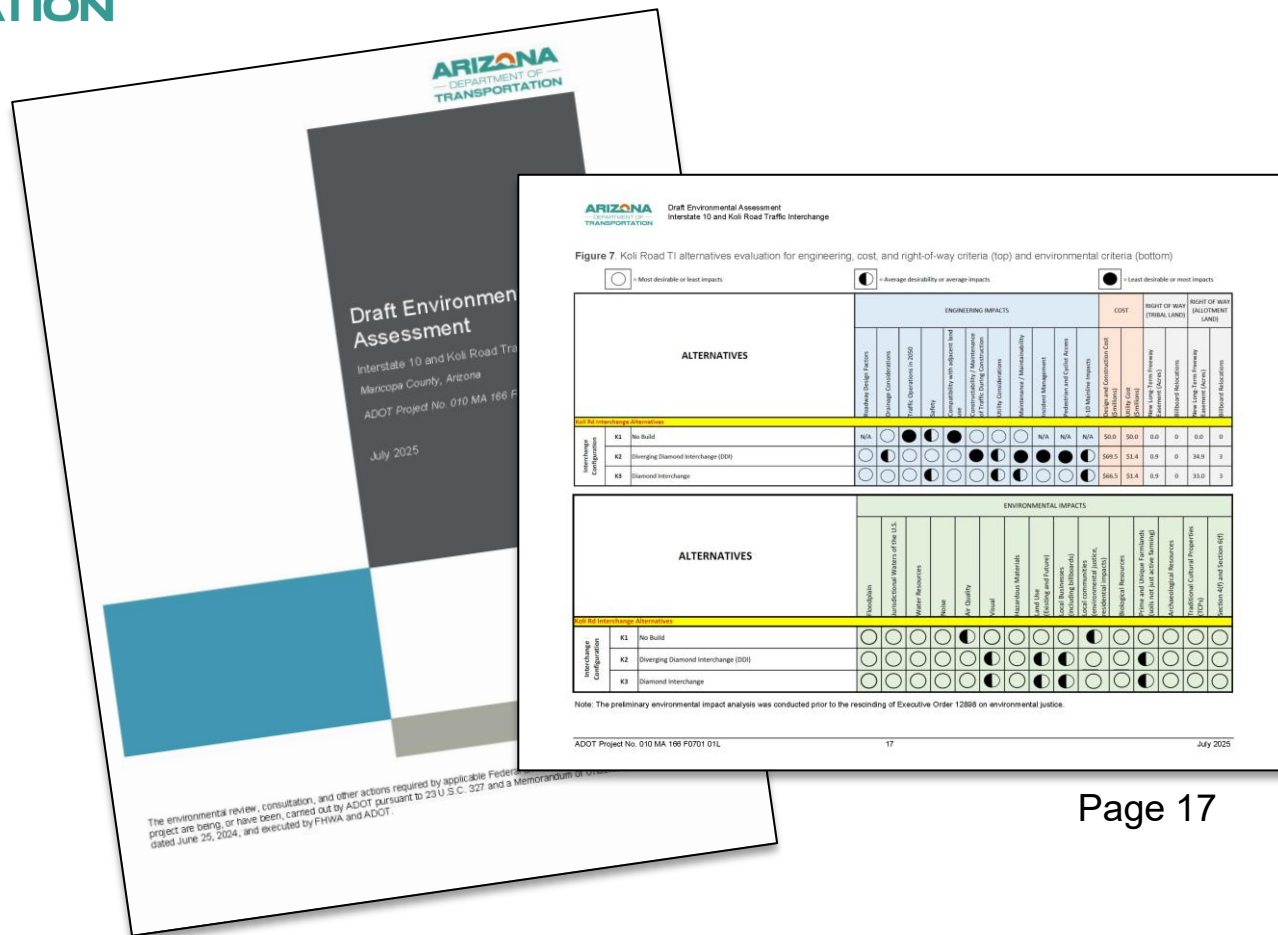
# What is the No-Build Alternative?

- The No-Build Alternative represents the existing transportation system with ongoing maintenance.
- The No-Build Alternative provides a basis against which social, environmental and economic impacts can be measured.
- The No-Build Alternative is used as a baseline, or a benchmark, to compare against the build alternative.



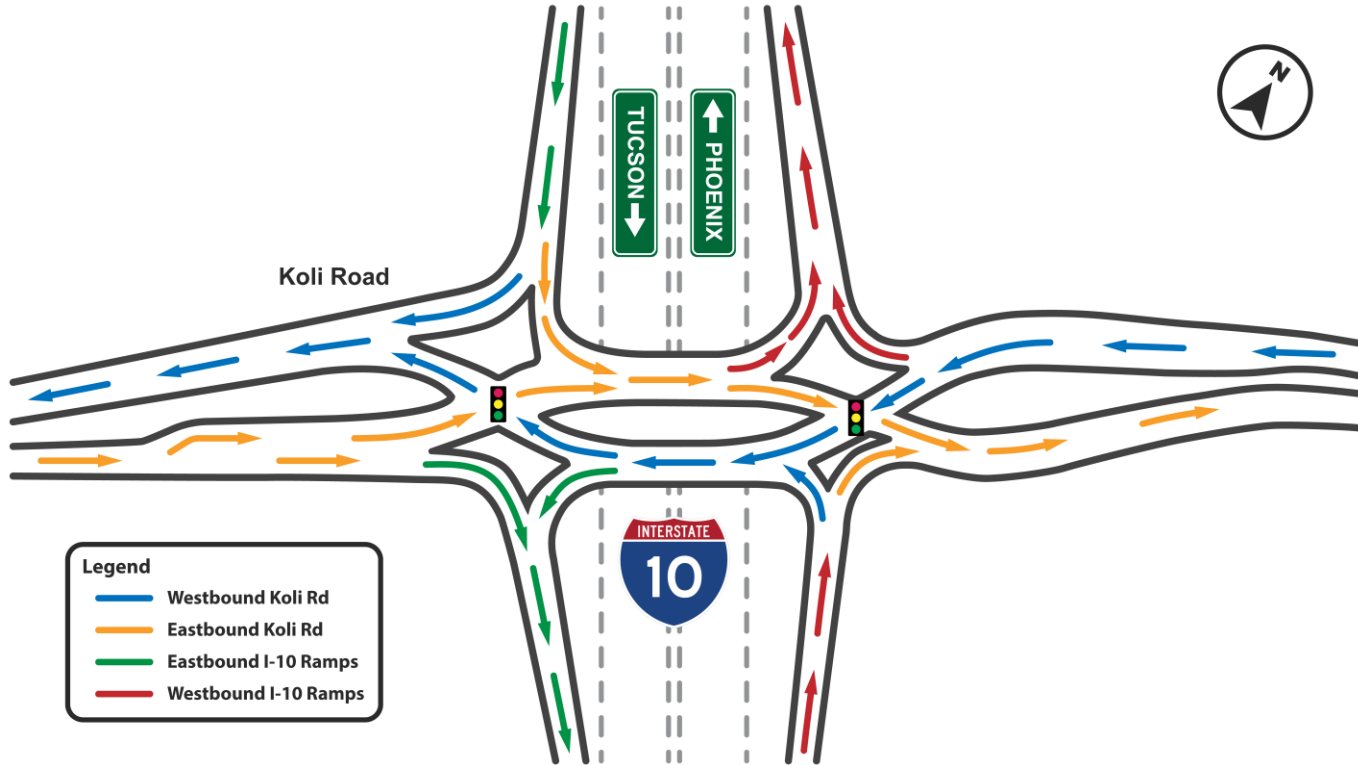
# Evaluation Matrix

(from Draft Environmental Assessment)



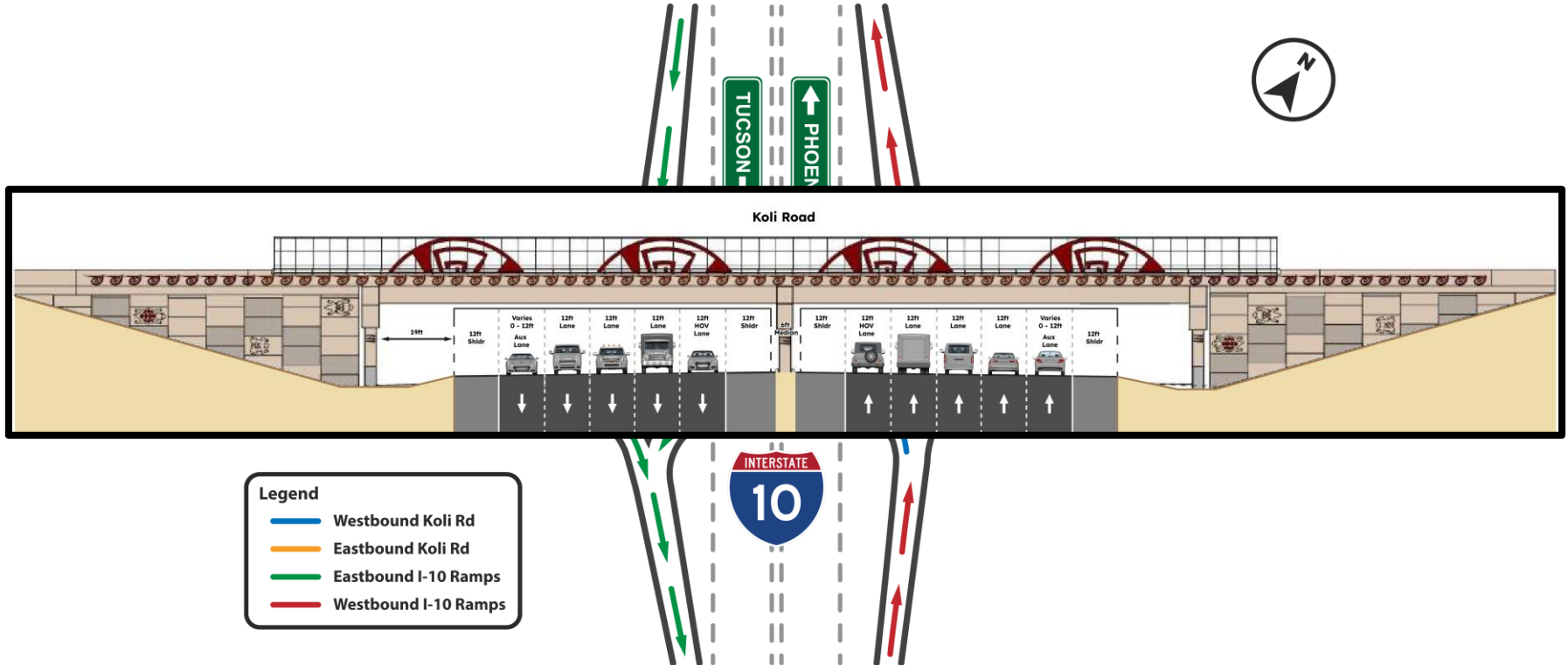
# Recommended Build Alternative (RBA)

## Diverging Diamond Interchange (DDI)



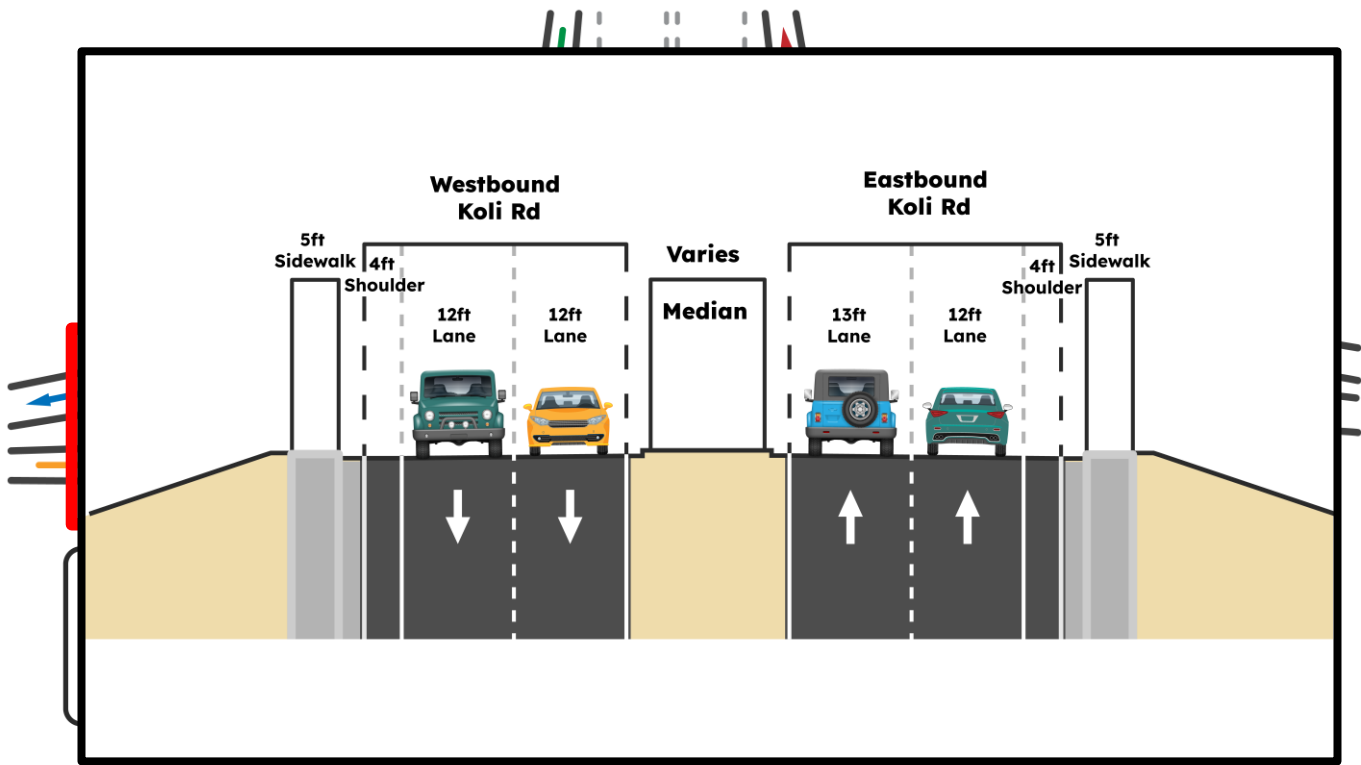
# Recommended Build Alternative (RBA)

## Diverging Diamond Interchange (DDI) - Existing I-10 Crossing



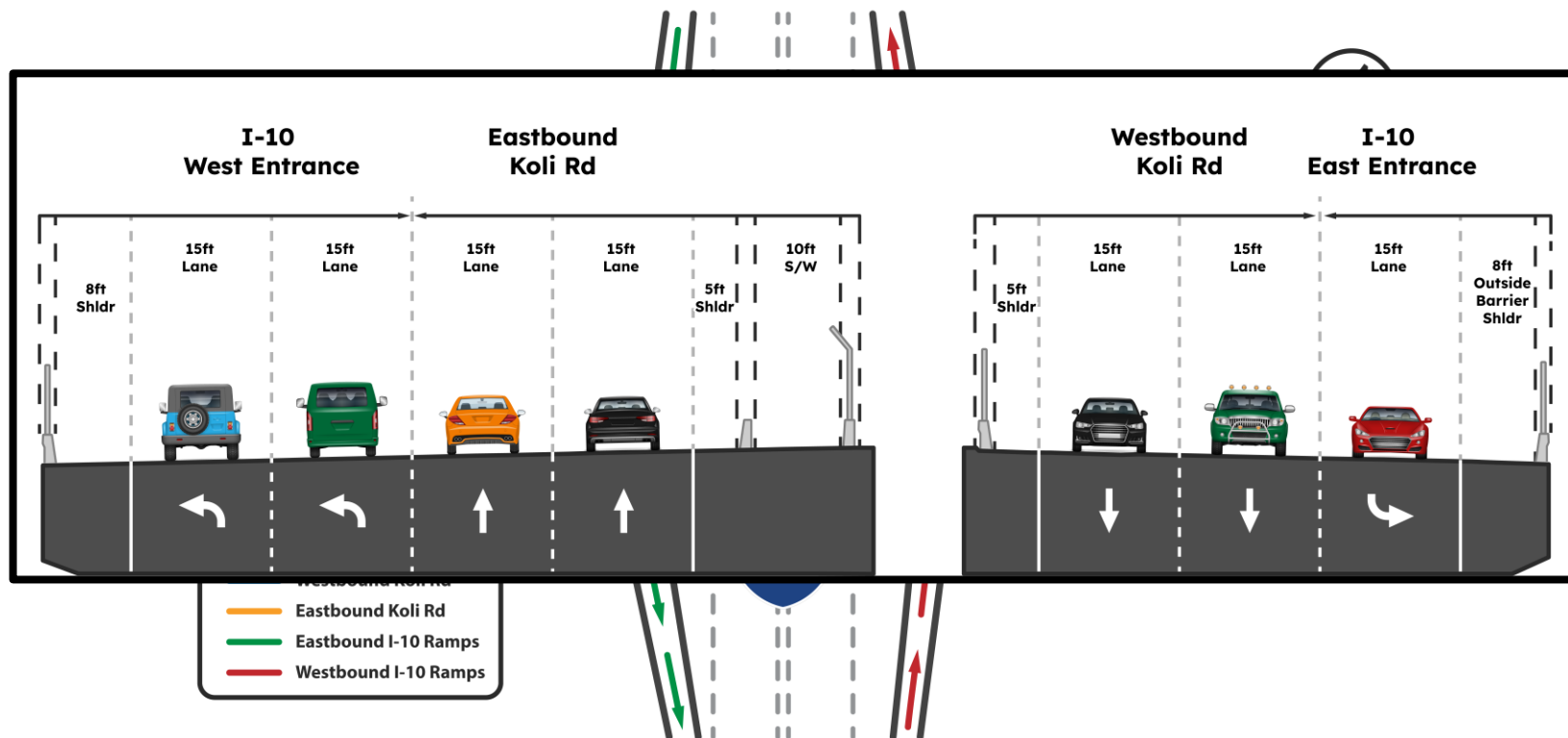
# Recommended Build Alternative (RBA)

## Diverging Diamond Interchange (DDI) - Koli Road Local Typical Section



# Recommended Build Alternative (RBA)

## Diverging Diamond Interchange (DDI) - Koli Road Bridge Typical Section





## Retaining Wall

## Bridge Piers



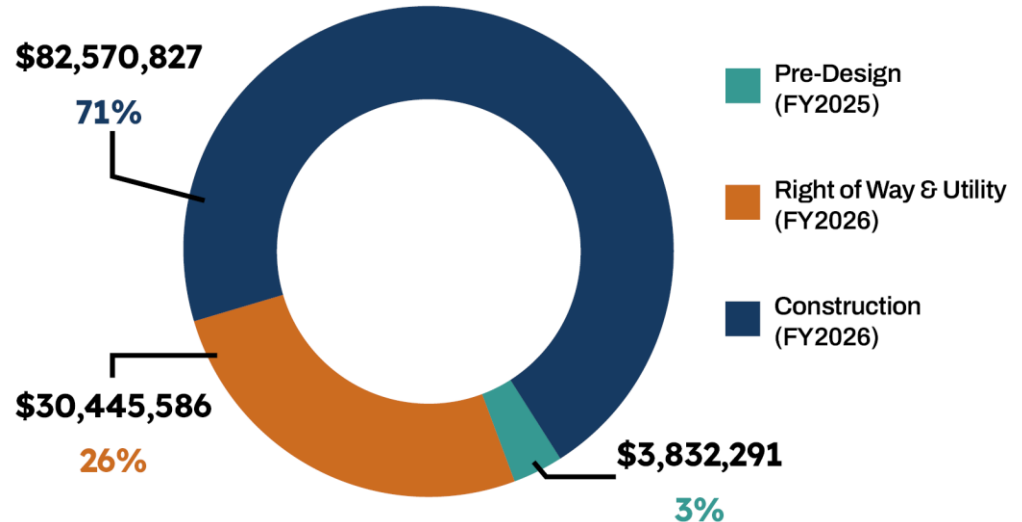
# 4. Funding



## Anticipated Funding

If a Build Alternative is selected, the Maricopa Association of Governments will fund Right of Way, Utility Relocation and Construction of the Koli Road Traffic Interchange in the anticipated years of expenditure, FY25-26. The program budget is shown below.

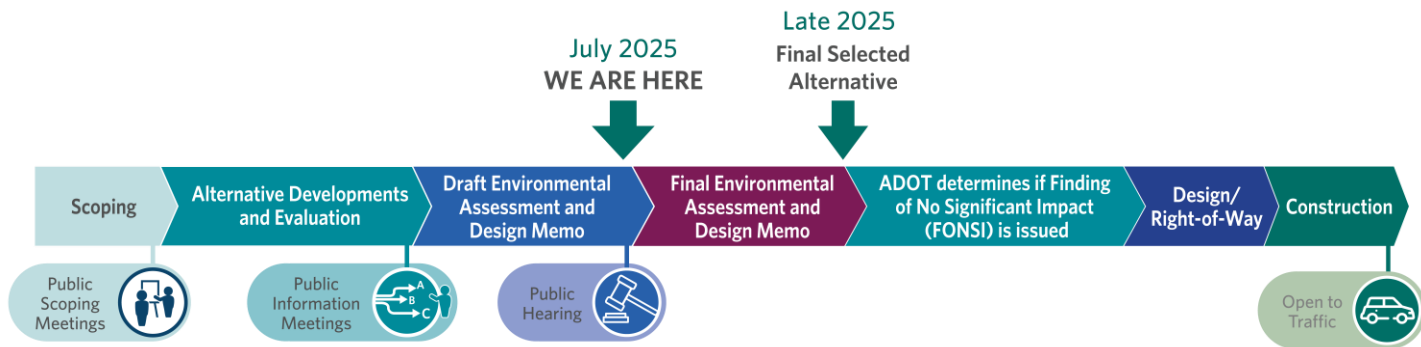
- Pre-Design was funded in FY2024-2025
- Right of Way & Utility and Construction are budgeted for FY2025-2026





# Next Steps

- Following the close of our comment period on Aug. 13, 2025, the study team will review, evaluate and respond to all comments from the partner agencies and the public.
- ADOT, in cooperation with the Gila River Indian Community, Maricopa Association of Governments, and the Federal Highway Administration, and Bureau of Indian Affairs, will then select a final alternative.
- This selection, combined with the input from the public comment period, will be documented in a final EA and DM documents.

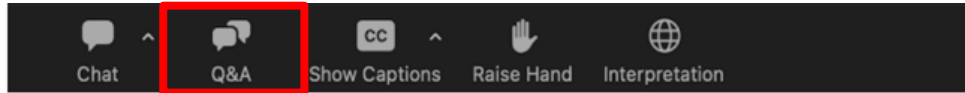


# Question and Answer

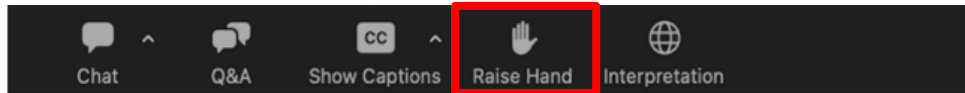


# How to Submit Questions

- Option 1: Please click on the Q&A icon to submit any questions you have during this presentation.



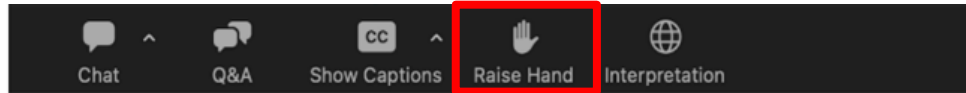
- Option 2: Please click on the Raise Hand icon during the Question part of the presentation.





## How to submit comments at the public hearing:

Formal public verbal comments documented by a court reporter.



## How to submit comments after the public hearing:



**Email:**  
koliroad@azdot.gov



**Visit the website and leave a comment:** [azdot.gov/koliroad](https://azdot.gov/koliroad)



**Call the bilingual project information line:**  
855.712.8530



**USPS Mail:**  
I-10/Koli Road Traffic Interchange  
Study Office  
7130 W. Fairview St.  
Chandler, AZ 85226

**Formal Public Comment Period ends Aug. 13, 2025**



# Thank you!



## How to submit comments after the public hearing:



**Email:**  
koliroad@azdot.gov



**Visit the website and leave a  
comment: [azdot.gov/koliroad](https://azdot.gov/koliroad)**



**Call the bilingual project  
information line:**  
855.712.8530



**USPS Mail:**  
I-10/Koli Road Traffic Interchange  
Study Office  
7130 W. Fairview St.  
Chandler, AZ 85226

**Formal Public Comment Period ends Aug. 13, 2025**