

ITS – Making ADOT's Roads Smarter

Systems Technology Group (STG)

Steven Cheshko
Arash Cyrus

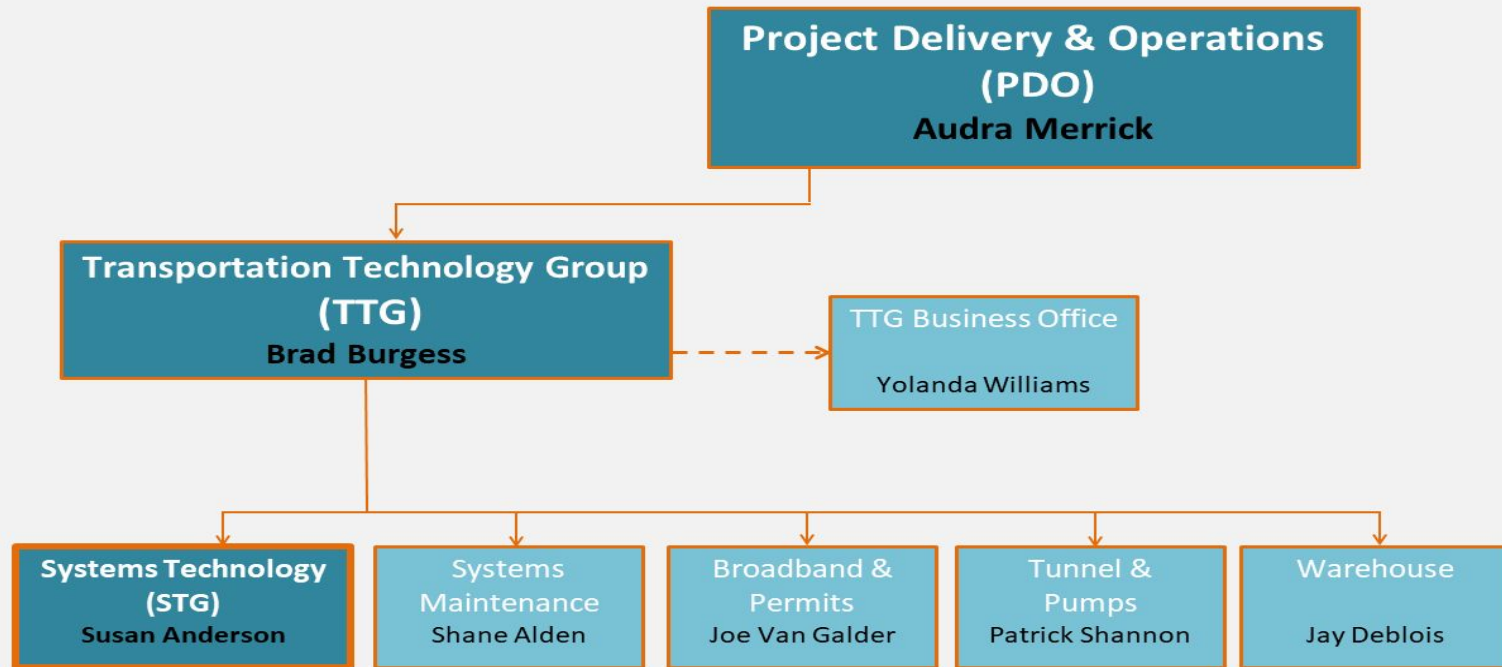


Sources: Pixabay

Agenda

- Introduce the team and Intelligent Transportation Systems (ITS)
- Identify ITS devices and systems at ADOT
- ITS Projects
 - Establishment
 - Funding
 - Coordination with stakeholders
 - Delivery
- ITS Resources

Organization Chart



STG Team Members

Susan Anderson - group manager

Project Development

- Victor Yang
- Adam McGuire
- Madison Shugrue

Technology

- Kevin Duby
- Shafique Islam
- Joseph Jones
- Arash Cyrus
- Joan Lovell
- Steven Cheshko
- Kendra Johnson



STG Overall Function

Facilitates development of Intelligent Transportation Systems (ITS) for traffic management.

- Oversees the research, planning, and implementation of new ITS technologies and applications
- Manages data and assesses performance of the existing ITS systems and assets

Background – What Is ITS?

ITS systems are used by MPD, ECD, PDO and comprised of:

- Hardware
- Software
- Networks and data

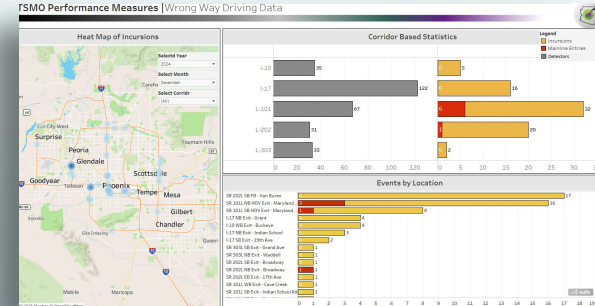
Parts of the infrastructure which:

- Make our roadways smarter
- Made us smarter about our roadways
- Maximize mobility and improve safety



ITS Systems

- Ramp metering
- Speed/volume detectors
- Travel time dissemination system
- Wrong-way detection system
- Road Weather information system
- Dust detection system
- Performance measure dashboards

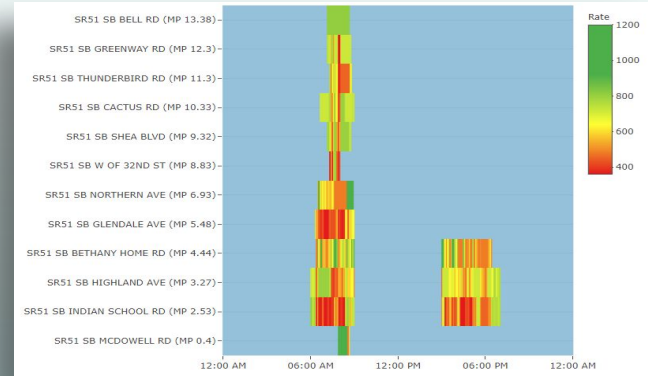


Monitor & Operate

Ramp Metering

Different levels of system intelligence:

- Basic: fixed rate
- Intermediate: responsive
- Advanced: adaptive (current status)



Monitor & Operate

Speed/Volume Detectors

Detectors collect mobility data including:

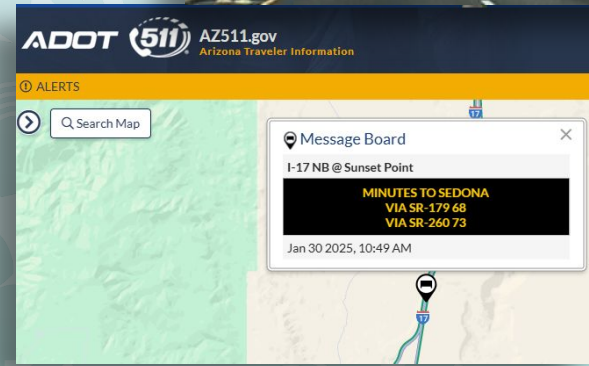
- Speed
- Volume
- Occupancy



Monitor & Operate

Travel Time Dissemination System

- Data Collection
 - ADOT owned data
 - ADOT acquired probe data
- Data Processing
 - Application developed by ITG
- Display
 - Dynamic Message Signs (DMS)
 - AZ511 application



Monitor & Operate

Wrong-Way Detection System

Components:

- Infrared (thermal) cameras
- Internally illuminated WW signs
- Decision Support Software
- CCTV cameras
- DMS



Monitor & Operate

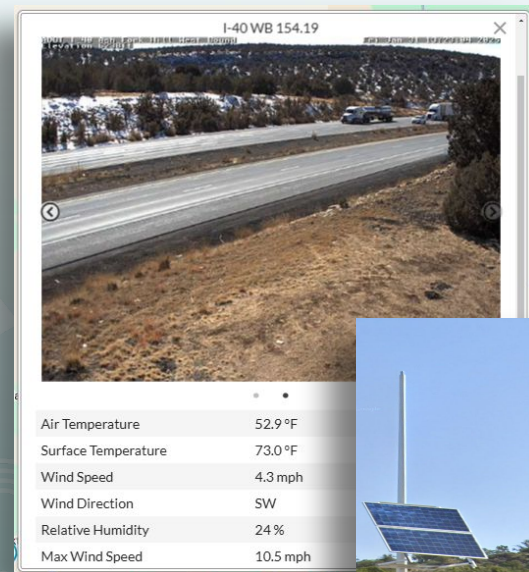
Road Weather Information System

Sensors monitoring:

- Wind
- Precipitation
- Visibility
- Snow depth
- Radiation
- Temperature and humidity

Traveler Information:

- DMS
- AZ511



Monitor & Operate

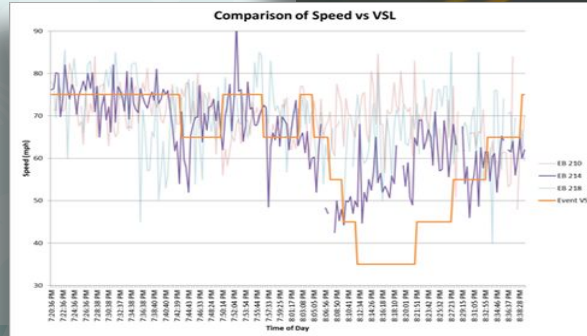
Dust Detection System

Sensors:

- Visibility
- RWIS
- CCTV
- Loop detectors
- X-Band Doppler Radar

Traveler Information:

- DMS
- Variable Speed Limits

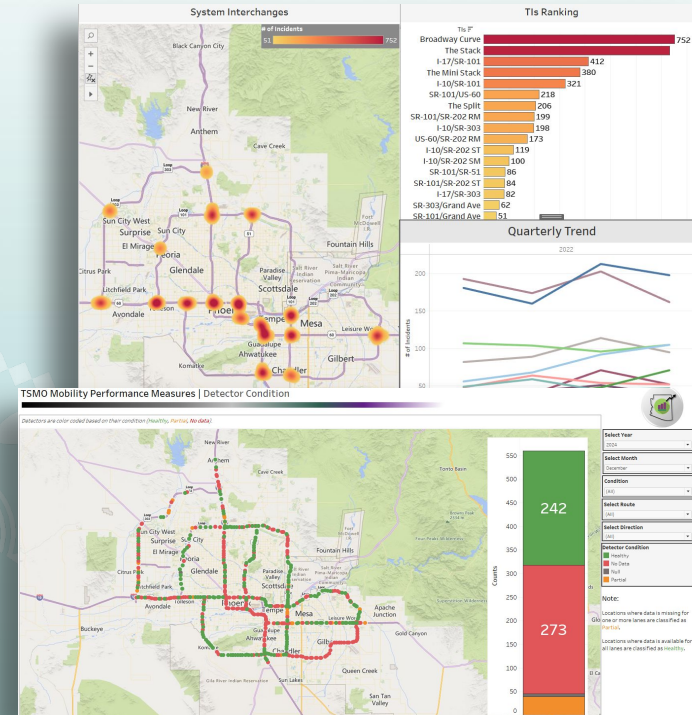


Monitor & Operate

Performance Measures Dashboards

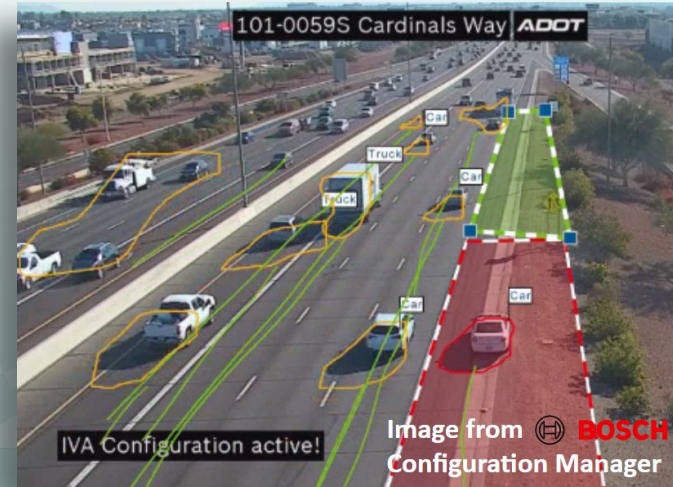
- Measure performance of the system itself
- Measure performance of the traffic flow and incident management

<https://adotnet.az.gov/content/performance-measurements-systems-technology>



Emerging Technologies & Innovation

- CV pilot applications
- AZ511 alerts
 - Back of queue, work zone, etc.
- Automated DMS message
 - Back of queue and weather
- Incident detection using AI



Questions?

ITS Systems

- Ramp metering
- Speed/volume detectors
- Travel time dissemination system
- Wrong-way detection system
- Road Weather information system
- Dust detection system
- Performance measures dashboards

Emerging Technologies & Innovation



ADOT Broadband for Commercial Use

ConnectAllAZ

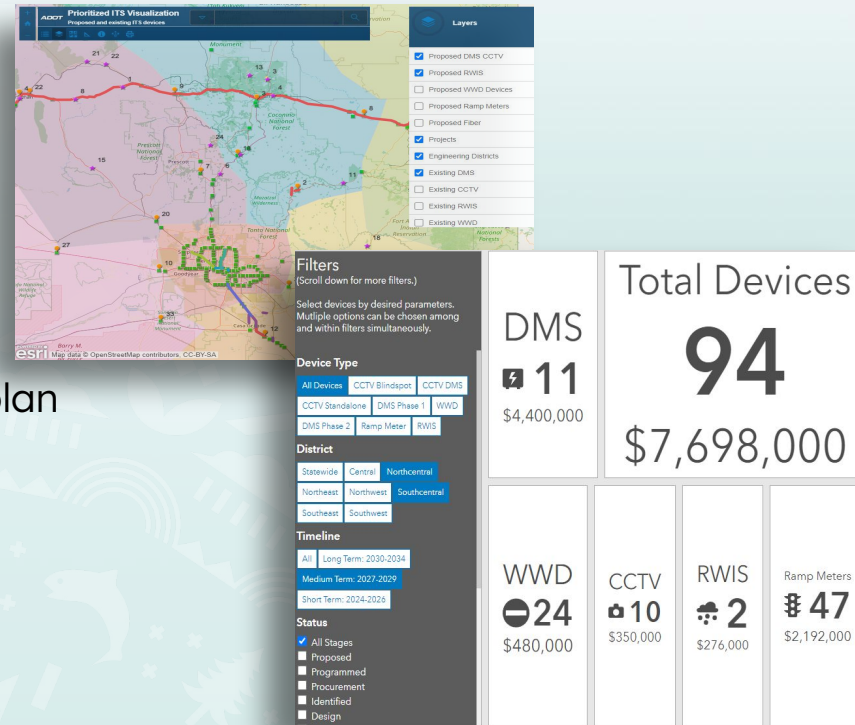
- 320k or 12% of households unserved or underserved
- Governor has prioritized *Narrowing the Digital Divide*
- ADOT Broadband Plan/Approach
 - ❑ Contracted with a vendor to Operate, Maintain and Commercialize
 - ❑ Smart Highway Corridor Trust Fund
 - ❑ ADOT is developing Fiber Installation Specs



ITS Scoping

How to Plan and Implement

- ITS Master Plan
 - [ADOT](https://adotnet.az.gov/its-master-plan) -
<https://adotnet.az.gov/its-master-plan>
 - [Public](https://azdot.gov/business/its-master-plan) -
<https://azdot.gov/business/its-master-plan>
- ITS Design Guides
- Stand-alone vs add-ons
 - May be hidden, so please ask



ITS Funding

- 5-year program
 - Smart Highway Subprogram
 - 705 Modernization Subprogram
 - Others (CRP, CMAQ, etc)
- Grants
- MAG

eSTIP Projects

Amendments

Advanced Search

Projects by County

Interactive Map

Information

State Transportation Improvement Program

ADOT ID

County

All

Lead Agency

All

Project Type

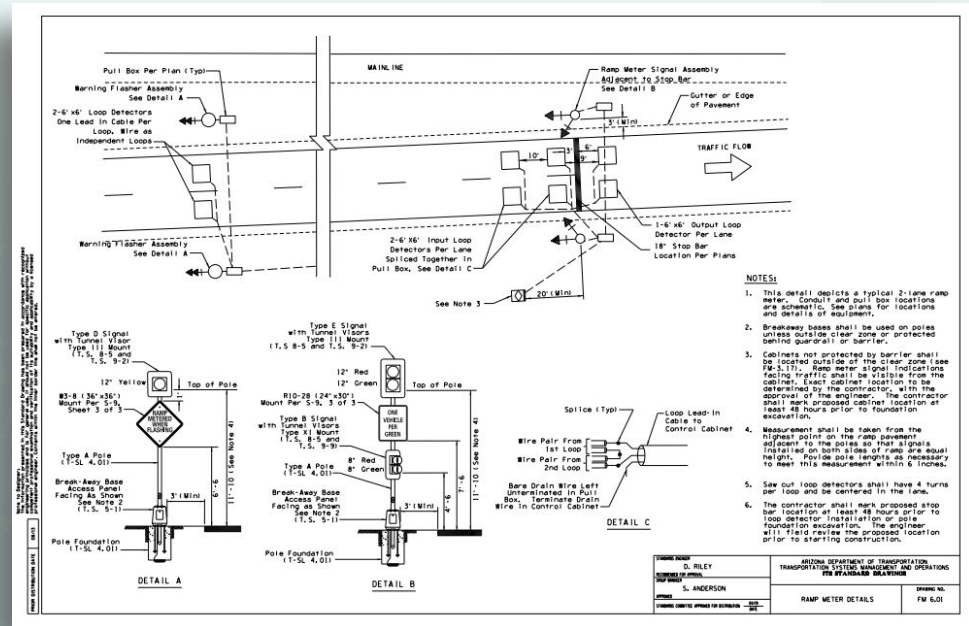
Intelligent Transportation

19 transportation project(s)

ADOT ID	Region	County	Lead Agency	Title
103842	NACOG	Yavapai	ADOT	I-40 and SR 89 and I-40 & US 93
78926	Statewide	Statewide	ADOT	2026 Statewide 3rd Party Data Collection
105022	CAG	Pinal	ADOT	SR 77 Dynamic Messaging System
103298	FMPO	Coconino	ADOT	I-17 - Country Club Dr
104478	MAG	Maricopa	ADOT	Fiber Pull Box and Fiber Inventory
105024	MAG	Maricopa	ADOT	US 60/Grand Ave ITS
78826	Statewide	Statewide	ADOT	2026 Statewide ITS Operations, Traffic and Support


ITS Design

- Design team
 - PMG
 - Subject Matter Experts - Systems Technology
 - Designers - Traffic Group or Consultant
- Standard drawings and specifications



ITS Design

- Special considerations
 - Power
 - Communications
 - Urban - Fiber
 - Rural - Cellular
 - Clearances
 - Systems Engineering Checklist and Vee Diagram



**ARIZONA DEPARTMENT OF
TRANSPORTATION**

41-2000

Systems Engineering Checklist

Section 4 – Requirements Definitions and Alternatives Analysis

4.1 Project Purpose and Need Summary:

Is there a project scoping document defining the issue? ☐ Yes ☐ No

If "No," please provide information:

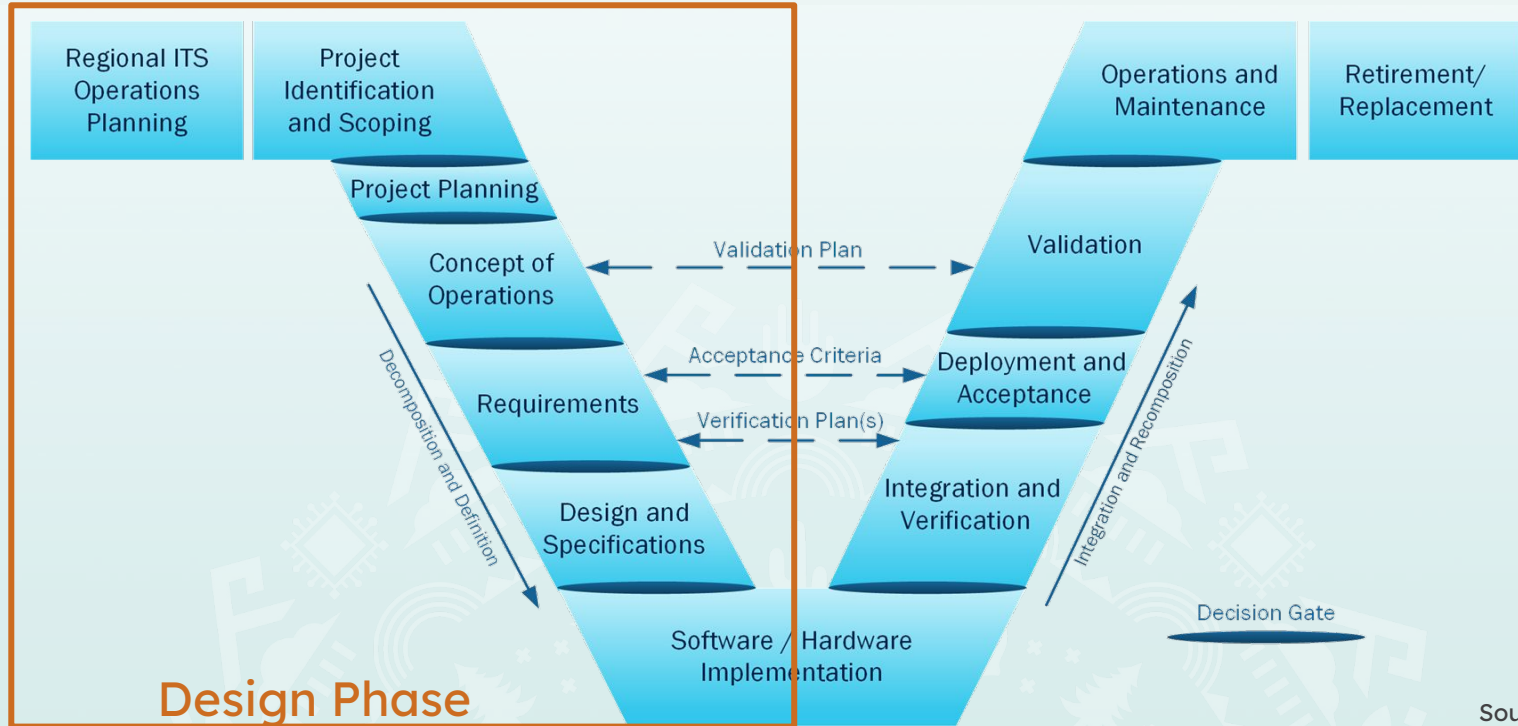
Is there a project scoping document defining proposed alternatives? ☐ Yes ☐ No

If "No," please provide information:

(Tip: List what types of planning documents have been or will be completed.)

4.2 Project Documentation	List the name and date of the existing document or what is to be developed in the space below:
<div style="display: flex; align-items: center;"> <input type="checkbox"/> Existing </div>	
<div style="display: flex; align-items: center;"> <input type="checkbox"/> Existing to Be Modified </div>	
<div style="display: flex; align-items: center;"> <input type="checkbox"/> To Be Developed </div>	

ITS Design

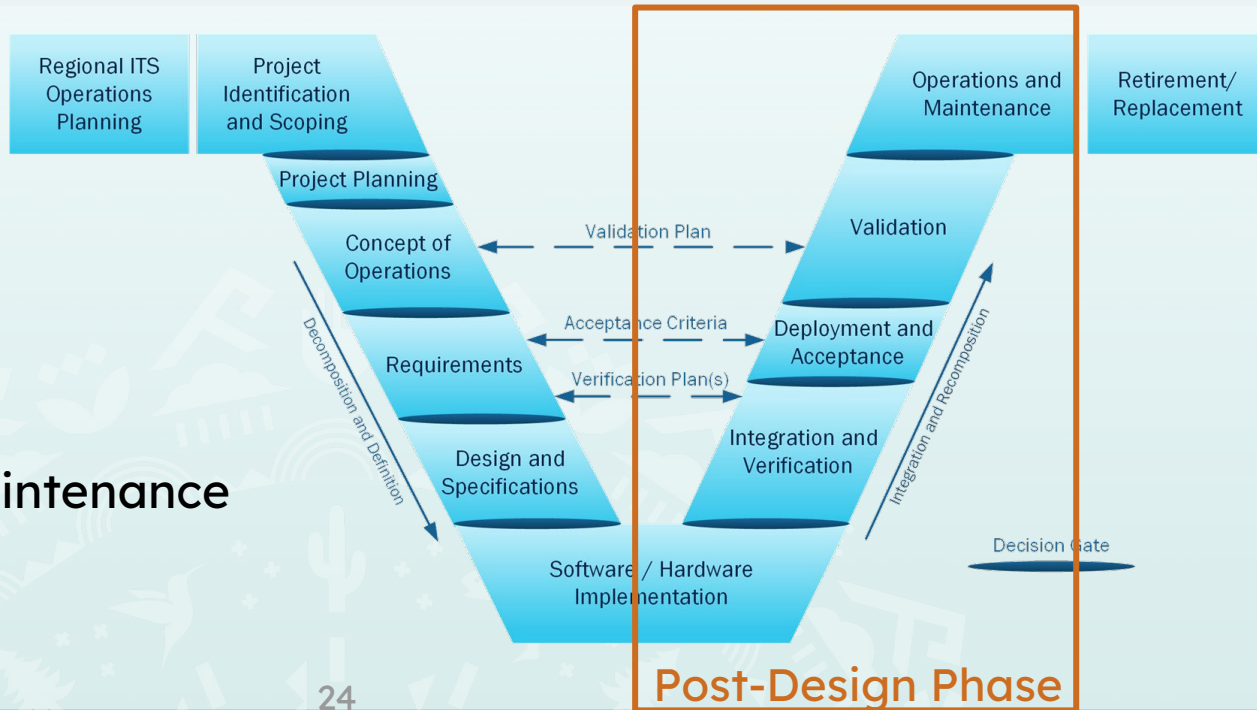


ITS and Other Groups

- **ITG and data governance process**
 - Business request - new technologies, interactions, or capabilities
 - Project Investment Justification (PIJ) - new or expanded, projects over \$25,000
- **Procurement**
 - Proprietary items ([SUP 01-1](#))
 - https://adotnet.az.gov/system/files/documents/2023/11/SUP_01-1_Proprietary_Items_effective.pdf
 - Public Interest Findings (PIFs) and Certifications
 - Contracts
 - Project-specific
 - Non-project-specific

ITS Post-Design

- Submittals
- System integration
- Inspections
- Testing
- Operations and maintenance



ITS Related Resources

ITS References

<https://azdot.gov/business/engineering-and-construction/its-references>

- Guides and plans
- Systems Engineering Checklist
- Standards
- Test forms

ITS References

Title	Size	Description
Ramp Metering Design Guide Errata	117 KB	Two pages of errata for the 2013 Ramp Meter Design Guide. Revised July 2019.
Ramp Metering Design Guide(link is external)	23 MB	Guide for ramp metering warrant checking, designing and installation for ADOT FMS 2013
ITS Design Guide	2.7 MB	Intelligent Transportation System Design Guide – March 2019
Systems Engineering Checklist	857 KB	For use with all projects containing ITS elements. Revised March 2025.
ITS Test Forms	72 KB	Test forms for construction of ITS elements 2018.
Arizona Statewide ITS Architecture (2018)		
ITS Standard Drawings	5.7 MB	ITS Standards - October 2021 Sheet 1E Index: PDF DGN
DMS Masterplan	18.5 MB	Guidelines for location and placement of permanent DMS 2011
FMS Communications Master Plan	4.8 MB	Freeway Management System, Communications Master Plan 2010

Questions?

- ADOT & Broadband
- ITS Scoping
- ITS Funding
- ITS Design
- ITS Related Resources

Thank you for attending!

systemstechnologygroup@azdot.gov

