

About the I-10 Kino to Country Club Project



The I-10: Kino to Country Club project is a major Arizona Department of Transportation (ADOT) effort to improve a heavily traveled section of I-10 in Tucson between east of Park Avenue to Alvernon Way. This project involves reconstructing the freeway to provide three general-purpose lanes east-and-westbound. Key elements include rebuilding the Kino Parkway interchange, constructing a new interchange at Country Club Road, removing the Palo Verde Road and Irvington interchanges, adding a westbound entrance ramp from Alvernon Way, and building an undercrossing to connect the North and South Kino Sports Complex. Construction began summer of 2025 and is expected to be completed by 2028.



2025 Wrap Up Report



New westbound I-10 on-ramp at Alvernon Way, complete and operating.

- The new westbound I-10 on-ramp at Alvernon Way is complete and operating.
- The I-10/Kino Parkway loop ramps along with the westbound I-10 on-and-off ramps at Irvington Road have been permanently closed.
- The majority of utility relocation work on Country Club under I-10 has been completed.
- Work has begun on the Kino Sports Complex undercrossing and all 7 major bridges throughout the project.
- New piers have been constructed for the Kino Parkway overpass and median abutment walls have been poured for the I-10 bridges over Ajo and Country Club.

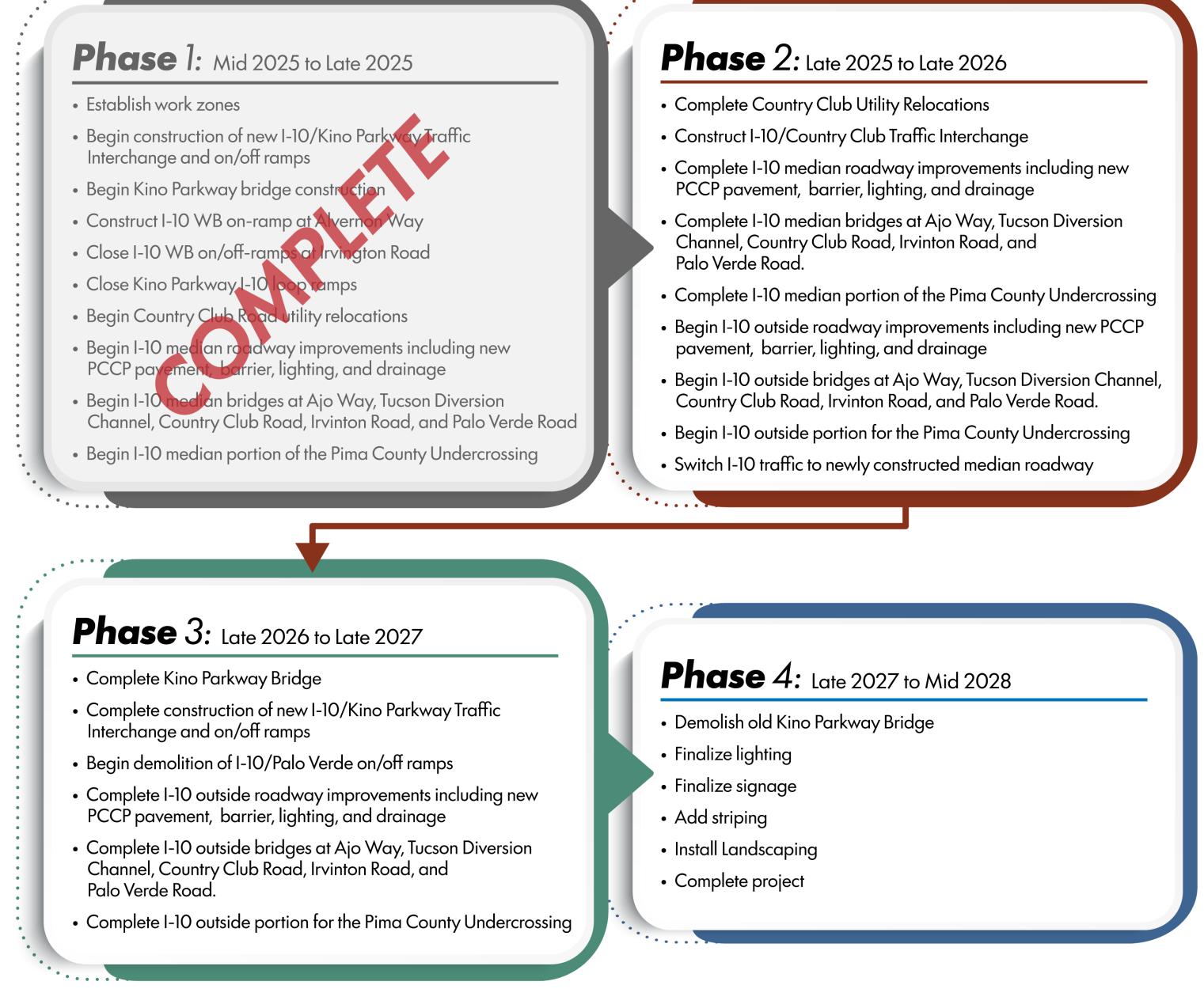
2026 Look Ahead

- Median paving along I-10 will take place throughout the corridor as part of the widening of I-10 efforts
- The new I-10 and Country Club Road interchange will be constructed and opened to traffic.
- Once the new Country Club interchange is operational, the existing on- and off-ramps at Palo Verde Road and Irvington Road will permanently close.
- The median portion of the bridges on I-10 at Palo Verde, Irvington Road, and Ajo Way will be reconstructed as part of the I-10 widening efforts.



Median paving along I-10 as part of the widening of I-10.

Project Phasing

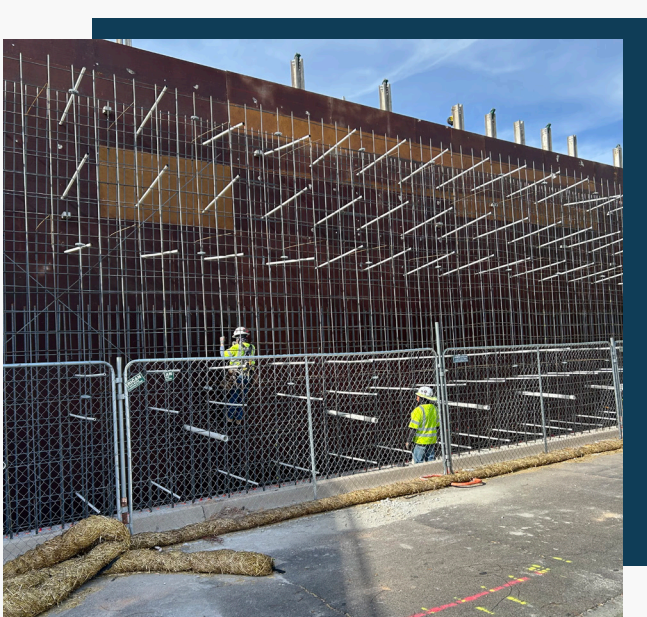


What's Happening Now



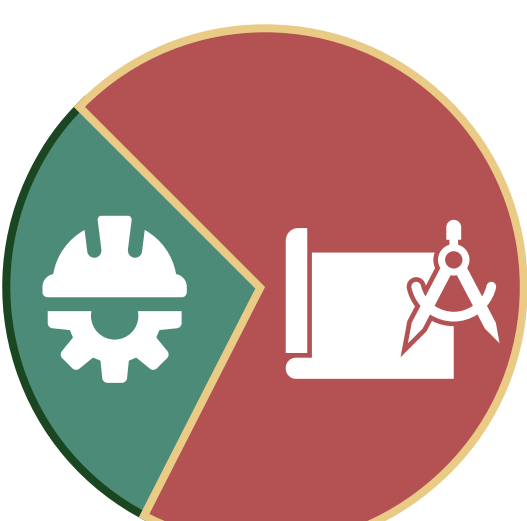
Kino Parkway Abutment Wing Wall - Crews are pouring concrete for the north wing walls of the new Kino Parkway bridge over I-10. Wing walls help hold back soil and support the roadway as it approaches the bridge.

Palo Verde Road Bridge Abutment Work - Crews are tying together steel reinforcing bars for the new Palo Verde bridge abutment. These steel bars strengthen the concrete and are tied together so they stay in the correct position while the concrete is poured, ensuring the bridge support is built correctly.



Country Club Road Box Culvert - Crews are building the floor of a concrete drainage structure. Wooden forms and steel reinforcement are in place to shape and strengthen the concrete. The next step is to pour the concrete. Once the concrete hardens, the forms will be removed and construction on the side walls will begin.

Percentage Complete: 30%



- Completed
- Remaining

