

Special website details 20-plus projects in Northwestern Arizona

Projects on I-40, US 93 include interchanges, widening, new pavement

A new interchange that will eliminate delays between Interstate 40 and US 93 in Kingman. A widening project to improve safety on US 93 between Phoenix and Kingman. A project replacing rough pavement on a section on I-40 with smooth asphalt.

Those are just a few of the projects the Arizona Department of Transportation (ADOT) has in the works for more than 120 miles of I-40 and US 93 in the northwestern region of the state.

The webpage, azdot.gov/NWImprovements, shares information on projects including pavement improvements, widening projects and new interchanges. Some projects are underway, others are upcoming and two are recently completed.

The Northwest Regional Improvements page includes 11 projects on I-40 and 10 for US 93. The page provides a brief overview of each project, plus links to individual project pages that include travel restrictions and timelines. Maps help drivers visualize project locations on I-40 and US 93.

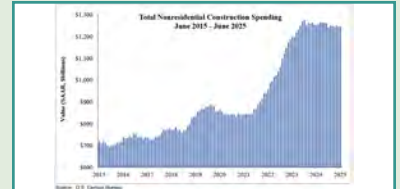
▶▶▶ 2



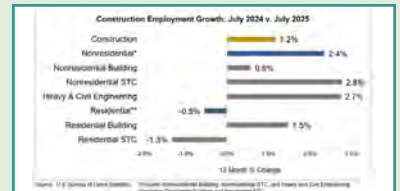
August in Arizona: heat, haste and paying attention



ADOT and partners honored for US 180 stormwater project



Nonresidential construction spending down 0.1% in June



Construction employment growth weak in July

NEWLY CERTIFIED DBE FIRMS

Congratulations on your certification! To learn more about the resources available to you, connect with our [DBE Supportive Services](#) team today!

- [Archesys Inc.](#)
- [Northside Construction and Supply Co. Inc.](#)
- [MultiSurance, LLC](#)
- [Outer Edge Engineering](#)
- [PADCOM inc. | DBA: P4 Consulting Inc.](#)
- [Sky Bear Media LLC](#)
- [Squire Contracting Inc.](#)
- [Stover Developments, LLC](#)
- [SynDEV LLC](#)
- [Viera LLC](#)

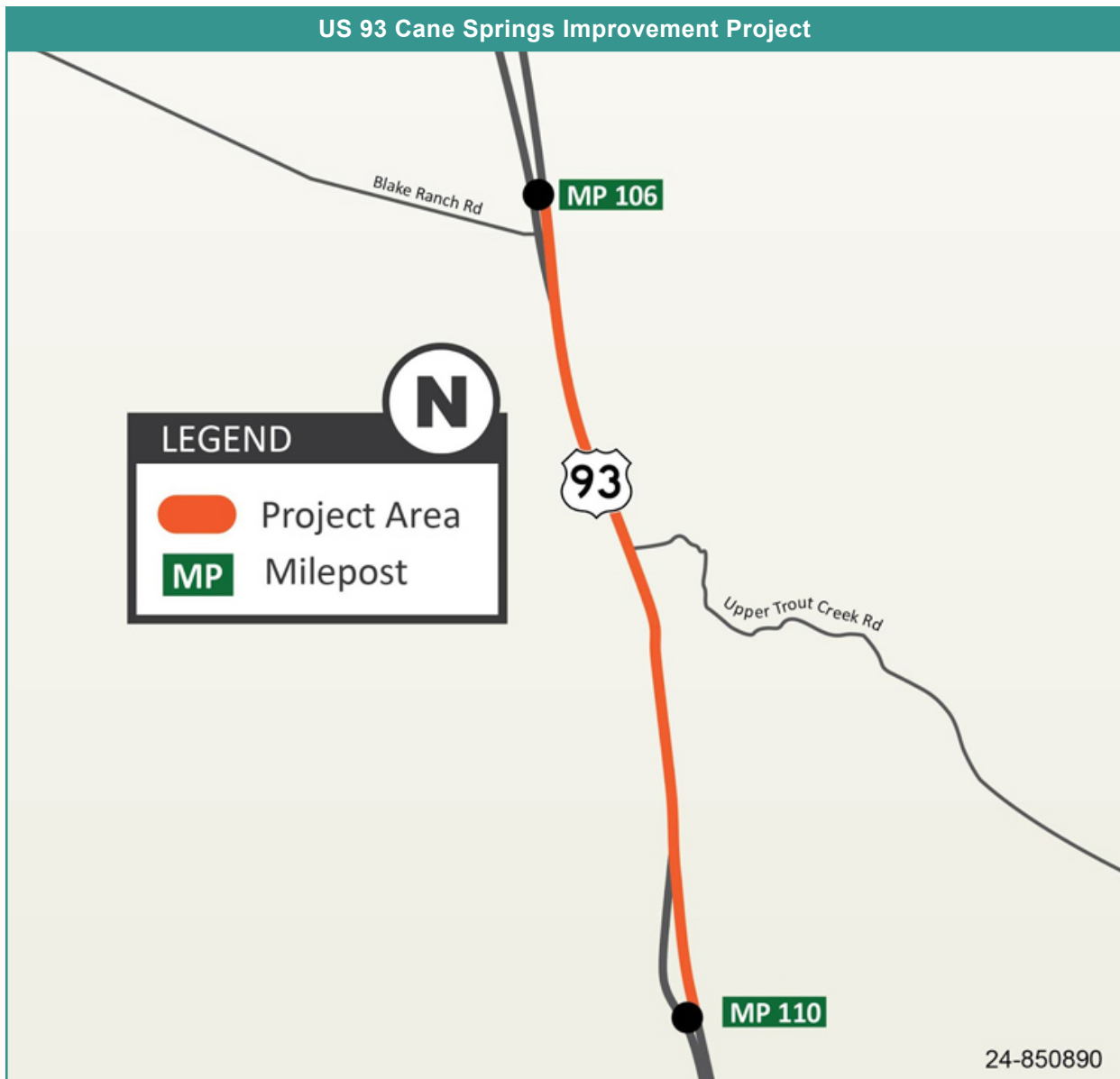
Special website details 20-plus projects in Northwestern Arizona (Cont'd)

The largest of these projects is already underway in Kingman, where ADOT is constructing a new free-flowing interchange between I-40 and US 93. The \$106.5 million project began in 2024 and is set for completion in 2027.

On US 93, work includes two passing lane projects and three separate projects to construct more than 9 miles of four-lane divided highway. Four pavement projects involve 39 miles of new asphalt.

On I-40, the focus is on pavement improvements projects. About 69 miles of new pavement are underway, planned or recently completed across 7 projects. Also a new interchange is under construction in east Kingman, providing access to the Kingman Airport via the future Flying Fortress Parkway.

The Northwest Regional Improvements page will be updated as new projects get underway or are completed. For more information, please visit azdot.gov/NWImprovements.



Stay cool. Stay sharp. Stay ready.

August in Arizona: heat, haste and paying attention

August in Arizona hits fast. The heat lingers. School is back in session. Roads feel more crowded. For small businesses in design and construction, this is not just a time when the heat and workloads spike; it is a critical one. The choices you make now affect safety, schedules and your business reputation.

Here's how to stay sharp when the temperature and pressure are up.

Navigate with care

Whether you are reviewing a submittal, drafting design details or heading into a kickoff meeting, staying focused matters. August brings more noise, more rush and more distractions. When attention slips, so does quality. A missed step today can mean lost hours next week.

Hot tip: Set up a daily 15-minute team huddle to flag concerns early. Revisit project checklists before deadlines. Create a shared calendar that includes school-related delays or adjusted team schedules.

Heat has business impacts

It's not just outdoor crews feeling the pressure. Arizona heat takes a toll on everyone mentally and physically. Afternoon fatigue leads to slower decisions, shorter temper and more mistakes. If your business depends on communication and coordination, heat is not just a weather issue, it is an operational one.

Hot tip: Shift critical meetings and review work to mornings. Encourage camera-optional virtual calls during peak heat. Allow brief cool-down breaks for anyone returning from the field, even if just between site visits. Visit the [Occupational Safety and Health Administration's heat illness prevention page](#) for more ways to protect your workers.

Back-to-school traffic affects more than drivers

The roads are more crowded. Schedules are tighter. Your clients, your team and your own family may all be adjusting to new school routines. Ignoring this reality creates stress and missed connections. A little planning goes a long way in August.

Hot tip: Add 15 minutes to travel time for meetings and field visits. Use GPS apps to spot school-zone slowdowns. Talk to your team about adjusting work hours temporarily if early pickups or drop-offs are needed.



Safety is everyone's business

Design and construction firms know safety is non-negotiable. But in August, it is not just about personal protective equipment or flagging plans. It is how we drive, how we handle pressure and how we support each other during long days. Good safety habits are good business habits.

Hot tip: Review internal safety policies with current conditions in mind. Include reminders about safe driving near schools in your next team email. Recognize employees who speak up about unsafe situations, even outside of work zones.

August is a test — and an opportunity

Heat, traffic, deadlines, school schedules: they all compete for your attention. This season is also a chance to show what reliability and leadership look like. Stand out as a business that plans well, responds professionally and keeps people safe.

Hot tip: Use this month to reinforce your firm's values. Share one practical tip per week in your team chat or staff meeting. Let employees know that focus and flexibility are part of what makes your firm successful, especially in August.

Keep your cool — and your edge

Arizona hits hard in August: there is no easing into it. The heat is intense, traffic ramps up and routines shift fast. Still, this is a chance to stand out. When your team stays focused and communicates clearly, you keep work on track and build trust. Businesses that stay steady in the tough months earn a reputation for reliability. That kind of consistency matters long after the weather cools down.



ADOT and partners honored for US 180 stormwater project

The Arizona Department of Transportation (ADOT) and the city of Flagstaff have been recognized with an award for a significant stormwater drainage system project along US 180 below the burn scar created by the Pipeline Fire in the San Francisco Peaks a few years ago.

The [American Concrete Pipe Association \(ACPA\)](#) presented its 2025 Project Achievement Award to ADOT and the city of Flagstaff.

The Schultz Creek Drainage Improvements project along US 180 involved installation of a new reinforced concrete box culvert and other improvements to carry storm runoff away from the area. The area near Flagstaff Fire Station No. 5 and Stevanna Way in northwest Flagstaff had experienced flooding after the Pipeline Fire.

The award-winning project, completed last year, was managed by Flagstaff in collaboration with ADOT. The increased stormwater capacity in the system has significantly reduced the risk of flooding.

“This project exemplifies how concrete infrastructure can deliver fast, reliable protection in the face of natural disaster,” said Steve Hawkins, president of ACPA. “We’re proud to recognize a project that only demonstrated technical excellence, but also prioritized community safety, collaboration and long-term resilience.”

ADOT staff focused on the importance of the improvements to local residents and businesses.

“The Schultz Creek drainage improvements in Flagstaff involved necessary and timely collaboration with the city,” said ADOT State Bridge Engineer David Benton, who accepted the award on behalf of the agency. “We need to give a lot of credit to the staff from ADOT’s Northcentral District, based in Flagstaff. They stepped up to meet the challenges that come with meeting deadlines.”

ADOT implemented interim drainage improvements along US 180, also known as Fort Valley Road, completing them before a monsoon dropped more rain on the San Francisco Peaks during summer 2023. Those included repairs to a runoff pipeline running parallel to the highway. The Schultz Creek Drainage Improvements project builds on that success, helping keep roads flood-free and people safe.

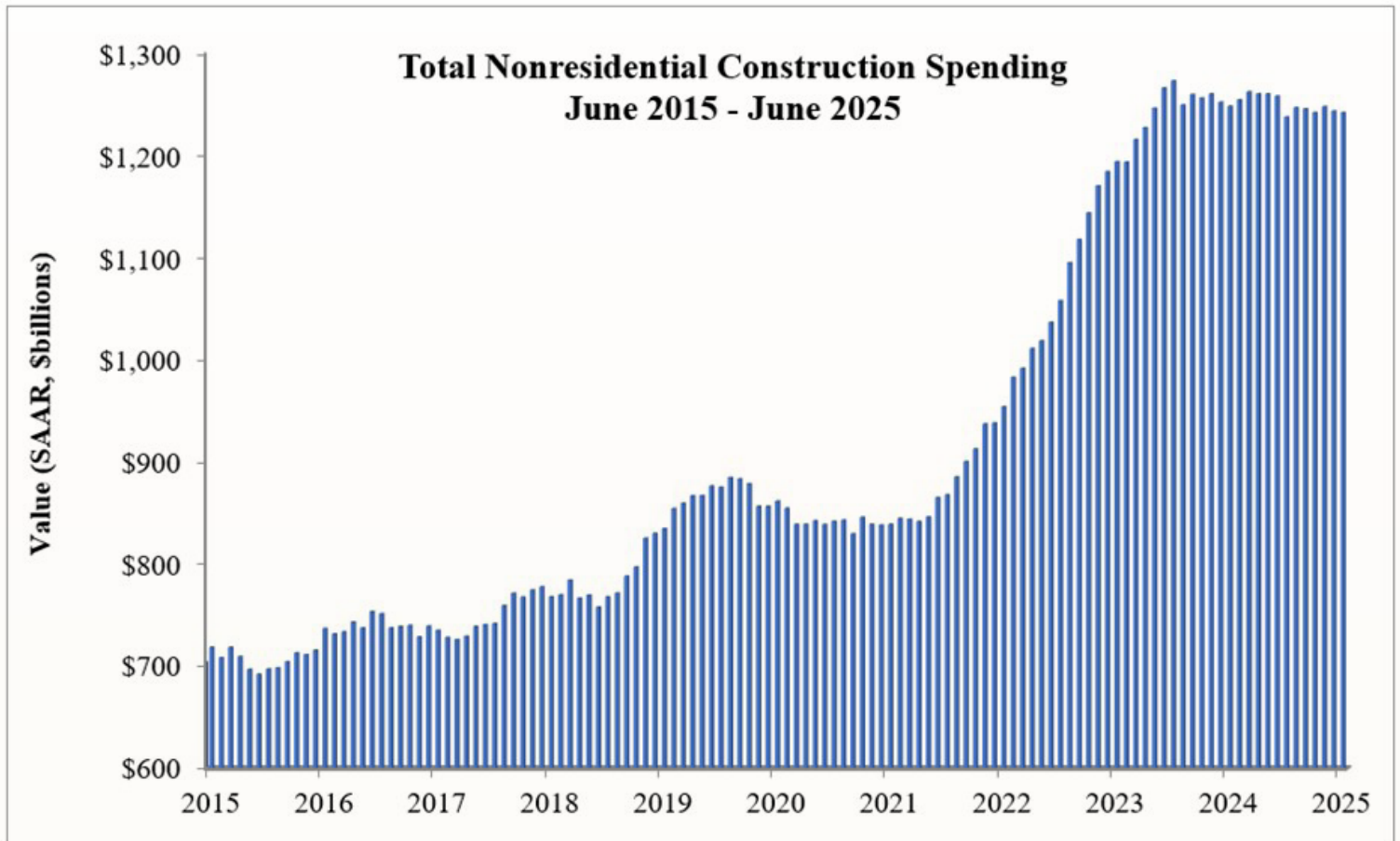


Nonresidential construction spending down 0.1% in June

National nonresidential construction spending decreased 0.1% in June, according to an Associated Builders and Contractors (ABC) analysis of data published by the U.S. Census Bureau. On a seasonally adjusted annualized basis, nonresidential spending totaled \$1.241 trillion.

Spending was down on a monthly basis in nine of the 16 nonresidential subcategories. Private nonresidential spending fell 0.3% for the month, while public nonresidential construction spending inched 0.1% higher.

“Nonresidential construction spending declined in June and has now contracted in six of the past seven months,” said ABC Chief Economist Anirban Basu. “Recent declines would be worse if not for ongoing increases in public nonresidential spending, which has risen 5.1% over the past year, significantly outperforming the 4.0% annual decline in private nonresidential activity. While ABC members remain optimistic about the second half of the year, according to ABC’s [Construction Confidence Index](#), recent data pertaining to both the construction industry and the broader economy suggest weakness could persist in the months to come.” ([Source](#))



Source: U.S. Census Bureau

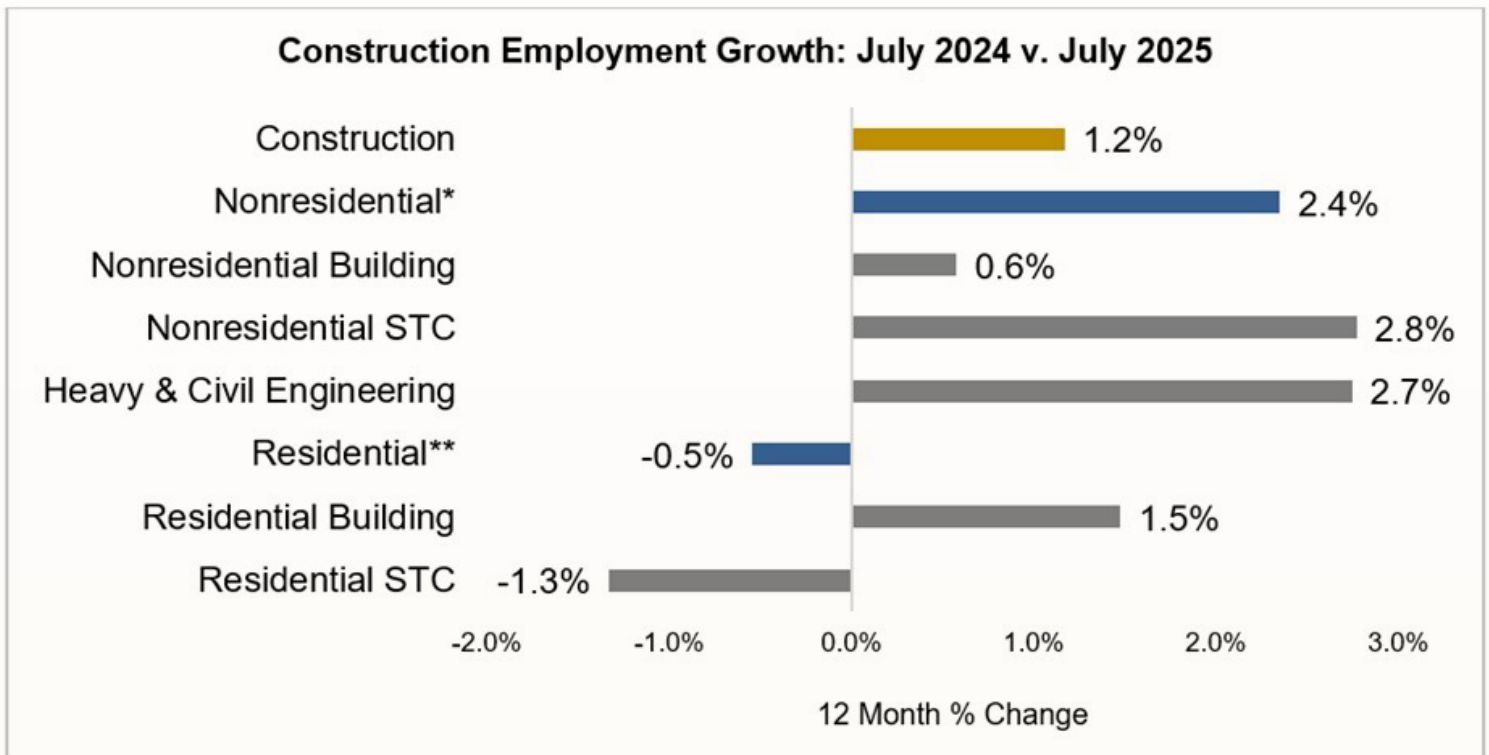
Construction employment growth weak in July

The construction industry added 2,000 jobs on net in July, according to an Associated Builders and Contractors (ABC) analysis of data released by the U.S. Bureau of Labor Statistics. On a year-over-year basis, industry employment has increased by 96,000 jobs, or 1.2%.

Nonresidential construction employment increased by 6,400 positions on net, with growth in two of the three subcategories. Heavy and civil engineering added 6,000 jobs, while nonresidential specialty trade added 1,900 new positions. Nonresidential buildings lost 1,500 jobs for the month.

The construction unemployment rate remained unchanged at 3.4% in July. Unemployment across all industries rose from 4.1% in June to 4.2% last month.

“The construction industry has added just 7,000 jobs over the past four months,” said ABC Chief Economist Anirban Basu. “Industrywide employment is up only 1.2% over the past year, a lackluster pace of growth that historically is seen during and immediately following recessions. The good news for ABC members is that the nonresidential segment continues to outperform, growing at twice the pace of the industry at large over the past 12 months. Given that ABC member backlog remains healthy and hiring expectations remain relatively optimistic, according to ABC’s [Construction Backlog Indicator](#), it’s possible that weakness will be confined to the residential side of the industry during the second half of 2025.” ([Source](#))



Source: U.S. Bureau of Labor Statistics

*Includes Nonresidential Building, Nonresidential STC, and Heavy and Civil Engineering

**Includes Residential Building and Residential STC



****ATTENTION TO ALL FIRMS****
Need help preparing DBE affidavits?
Please see our tutorial video below:
[Preparing DBE Affidavits](#)



AUGUST

21 **ASBA: Arizona Speaks**
10 - 11 a.m.
Location: Buckeye City Hall East at
The Landing
945 N. 215th Ave., Ste. 137, Buckeye

21 **ACE: Your Personal Brand and Unique Value**
9:30 - 11 a.m.
Location: Small Giants
5555 E. Van Buren St., Ste. 115,
Phoenix

22 **Valley Partnership: Revitalizing the Valley: Modernizing Former Entertainment/Shopping Centers**
7:30 - 9 a.m.
Location: Phoenix Contry Club
2901 N. Seventh St., Phoenix

25 **Kuniklo Corporation: Contract and Labor Compliance Training 2025**
10 a.m. - 4 p.m.
Location: DoubleTree by Hilton Hotel
Tucson - Reid Park
445 S. Alvernon Way, Tucson

SEPTEMBER

4 **BISNOW: Phoenix Future of Life Sciences Summit**
8 - 11:30 a.m.
Location: The Westin Kierland Resort & Spa
6902 E. Greenway Pkwy., Scottsdale

4 **DBE Stakeholder Meeting - Triennial Goal for FFY 2026-2028**
9 - 10 a.m.
Location: Virtual

5 **MPA: Par-Perfect Pursuit: MPA's Tourney of Champs**
6 a.m. - 1 p.m.
Location: Omni Tucson National Golf Resort
2727 W. Club Dr., Tucson

9 **Q3 2025 ADOT DBE Joint Task Force Meeting**
9 10:30 a.m.
Location: Virtual

10 **ASBA: SCALE Roadshow - East Valley Stop**
9:30 a.m. - 3 p.m.
Location: Mesa Convention Center
263 N. Center St., Bldg. A, Mesa

Featured Federal-Aid Projects

CURRENT OPEN SOLICITATIONS

Due Date	Project Valuation	DBE Goal	Solicitation / Project Number	Type	Project Owner and Description	Contact
9/5/25 11 a.m. MST	\$12.6 million	4.49%	377-A-(203)T; F066101C	<u>IFB</u>	ADOT - Construct Shoulders & Rumble Strips, Heber to Holbrook HWY (SR 377) from MP8 to Phx Park Wash, S of Dry Lake. The work consists of widening the existing roadway pavement to accommodate shoulders in both Northbound and Southbound directions on State Route 377, install centerline and edge line rumble strips, paving turnouts, fog coat application on the existing travel lanes and new shoulder widening; install new pipe and pipe encasement, signing, pavement marking and other related work.	Vian Rashid, Engineering Specialist, at vrashid@azdot.gov.
9/5/25 11 a.m. MST	\$1.1 million	5.13%	YUM-0-(225)T; T041001C	<u>IFB</u>	ADOT - Install Pedestrian Hybrid Beacons, 24th St and 6th Ave on Giss Pkwy, Yuma. The work consists of the installation of Pedestrian Hybrid Beacons, crosswalks, ADA pedestrian ramps and other related work.	Thomas Mowery-Racz, Engineering Specialist, at tmoweryracz@azdot.gov.
9/5/25 11 a.m. MST	\$1.21 million	4.8%	YYV-0-(212)T; T041401C	<u>IFB</u>	ADOT - Bridge Replacement, Wash Bridge at Walnut Grove Rd, Yavapai County. The work consists of bridge replacement, a new cast-in-place concrete box culvert under the existing bridge and removal of the existing bridge superstructure, new roadway pavement over the culvert, reconstruction of approach roadway and applying pavement markings and other related work.	Yusuf Kadem, Engineering Specialist, at Ykadem@azdot.gov.

External Links:

- [ADOT Current Advertisements](#)
- [ADOT Engineering Advertisements](#)
- [ADOT Public-Private Partnership Initiatives](#)
- [ADOT Advertised Alternative Delivery Projects](#)
- [Bidding Opportunities Around the State](#)

DBE SUPPORTIVE SERVICES PROGRAM

1801 W. Jefferson St., Ste. 101, Phoenix AZ
602.712.7761
DBESupportiveServices@azdot.gov