

About the I-10 Kino to Country Club Project



The I-10: Kino to Country Club project is a major Arizona Department of Transportation (ADOT) effort to improve a heavily traveled section of I-10 in Tucson between east of Park Avenue to Alvernon Way. This project involves reconstructing the freeway to provide three general-purpose lanes east-and-westbound. Key elements include reconstructing the Kino Parkway interchange, constructing a new interchange at Country Club Road, removing the Palo Verde Road and Irvington Road interchanges, adding a westbound entrance ramp from Alvernon Way, and building an undercrossing to connect the North and South Kino Sports Complex. Construction began summer of 2025 and is expected to be completed by 2028.



2026 First Quarter Recap



Girders for I-10 bridge over Palo Verde Road

- The bridge decks in the median portions of I-10 at Ajo Way, Tucson Diversion Channel, and Country Club Road have been poured.
- Approximately 1.3 miles of concrete pavement (PCCP) has been placed between east of Park Avenue to the west side of the Country Club Road bridge.
- Storm drains, box culvert and underground utilities have been installed at Country Club Road.

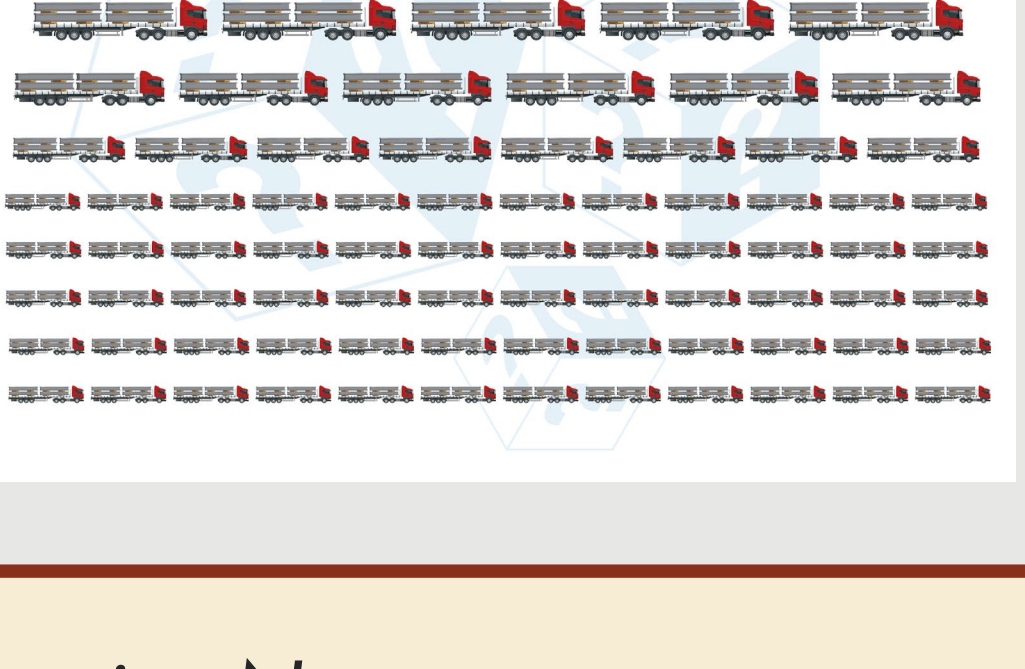
DID YOU KNOW?

Each bridge girder weighs approximately 80,000 pounds — about the same as a fully loaded semi truck!

Crews have installed 82 girders in the median bridge sections along I-10 across five locations:

- Ajo Way
- Palo Verde Road
- Country Club Road
- Irvington Road
- Tucson Diversion Channel

That's the equivalent of lifting and placing 82 fully loaded semi-trucks across these bridges.

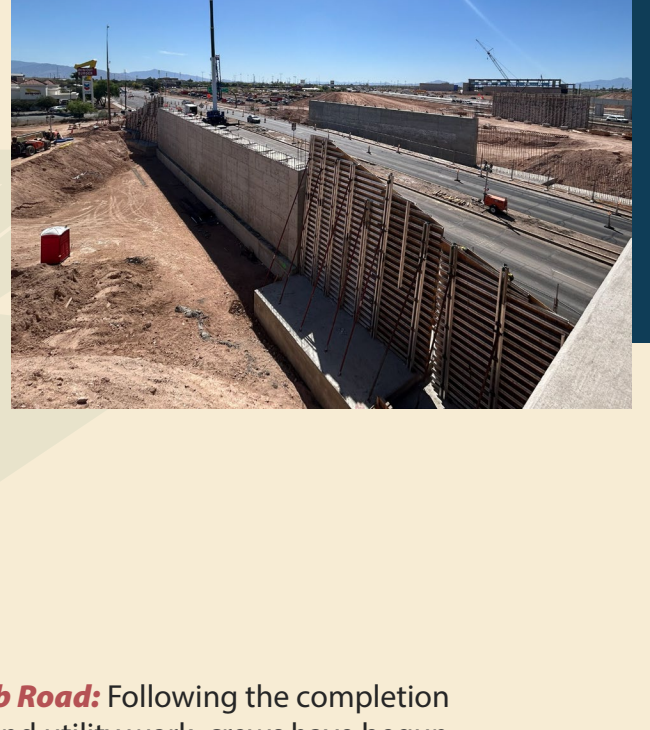


What's Happening Now

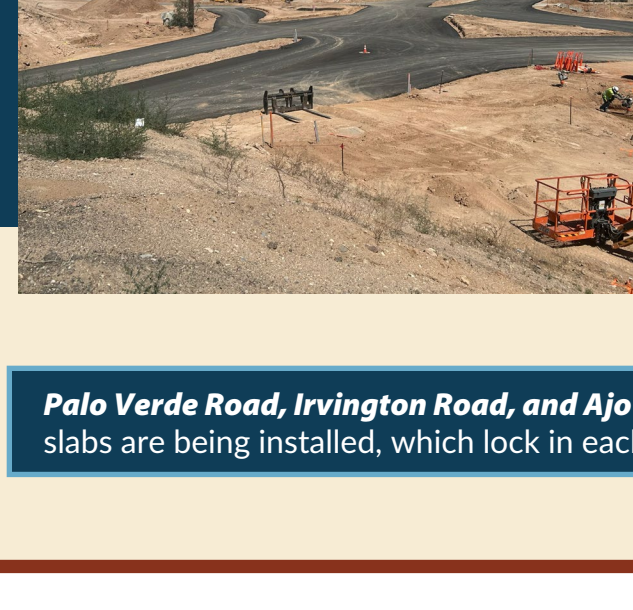


Kino Parkway Bridge over I-10: Kino Parkway Bridge over I-10: Abutment construction remains underway as work progresses on the new bridge. The abutments support and anchor the bridge, transferring the weight of the structure and traffic while helping keep the bridge securely in place.

I-10 Median: I-10 Median: New lanes are taking shape in the median as crews place Portland cement concrete paving (PCCP), advancing work to widen I-10 to three general-purpose lanes in each direction, with construction moving east toward Alvernon Way.



Country Club Road: Following the completion of underground utility work, crews have begun construction of the new Country Club Road intersection beneath I-10, including new on-and-off ramps on either side. The interchange will be built as a diverging diamond interchange.



Palo Verde Road, Irvington Road, and Ajo Way Bridges (not pictured): Concrete anchor and approach slabs are being installed, which lock in each bridge and provide a smooth transition to the roadway

Meet the Team



Jeremy Moore, South Central District Administrator: As South Central District Administrator, he brings leadership, experience, and a strong commitment to public service to the I-10 Kino to Country Club project. His role blends strategic oversight, operational coordination, and team leadership. Each day involves reviewing project updates, aligning priorities with staff, supporting construction progress, and ensuring work stays on schedule and within budget — all while keeping safety and mobility at the forefront.

On this project, he provides district-level guidance to ensure overall success. He works closely with the project management team, contractors, designers, and community partners to resolve high-level issues and maintain forward momentum. With I-10 serving as a vital corridor for commuters and freight movement, minimizing disruptions while delivering quality improvements is a top priority.

His transportation career began in 2004 as an ADOT intern while attending the University of Arizona. That hands-on field experience sparked a passion for infrastructure and its impact on communities. After completing his degree and ADOT's Engineer-in-Training Program, he advanced through several leadership roles, gaining the experience that now supports his work guiding major projects like I-10 Kino to Country Club.

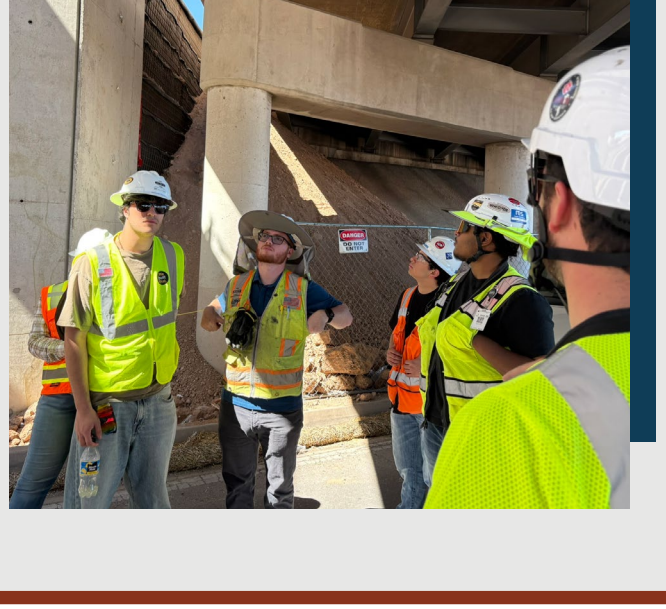
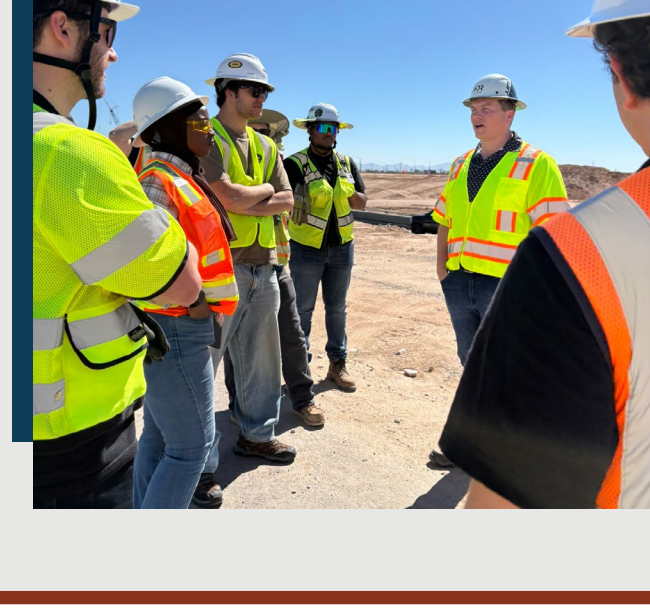
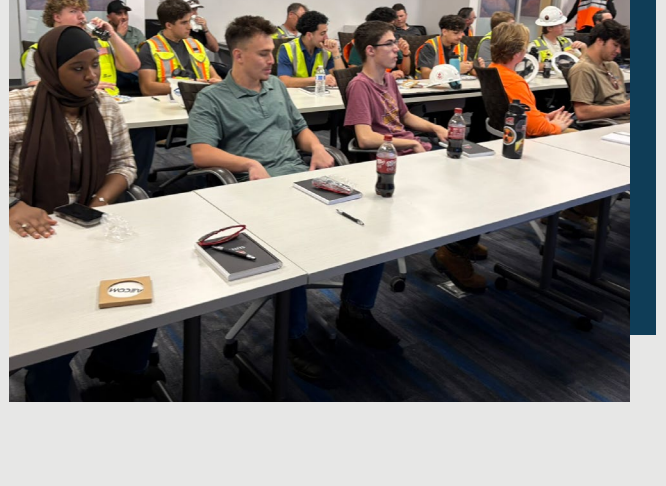
"Seeing a project move from concept to completion — and knowing it will serve thousands of drivers every day — is what makes this work meaningful."

For him, the I-10 Kino to Country Club project represents more than construction. It reflects a long-term investment in safety, regional connectivity, and economic growth for Southern Arizona.

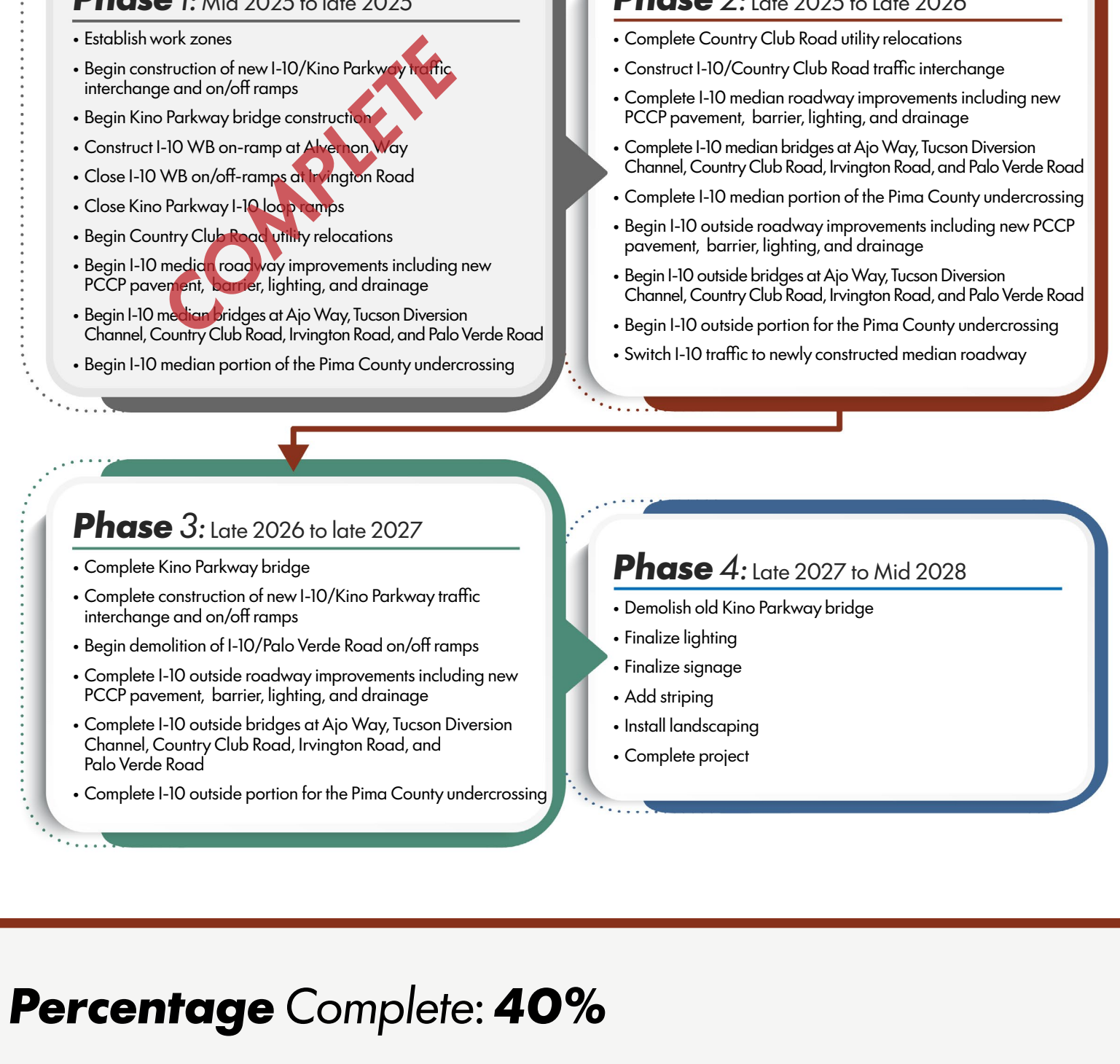
College students visit the project

The I-10 Kino to Country Club project recently welcomed groups of college students from the University of Arizona and Arizona State University as part of an educational site visit program. The students, who are studying engineering and related fields, visited different areas of the project to learn about transportation infrastructure and to see how projects are built in real-world conditions.

During their visit, project team members shared an overview of the improvements planned along the I-10 corridor and discussed the design, construction, and coordination involved in delivering a project of this scale. The students also had the opportunity to observe ongoing work and learn about the roles engineers, construction managers, and other professionals play throughout the life of a transportation project.



Project Phasing



Percentage Complete: 40%



- Completed
- Remaining