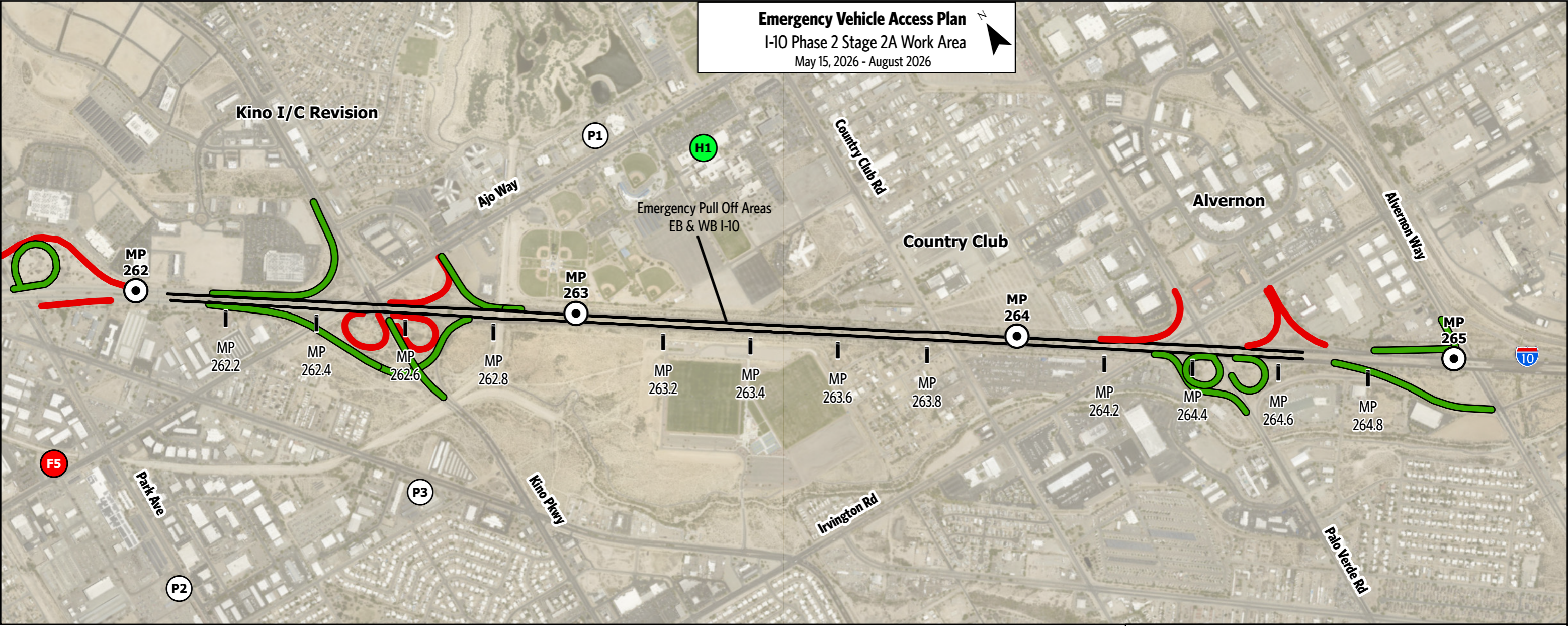
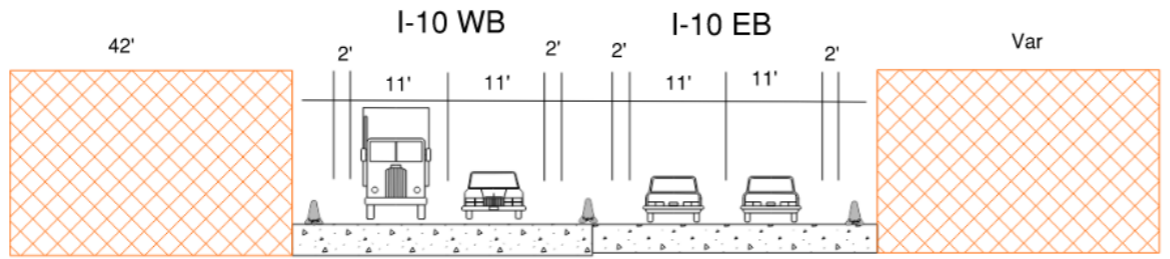


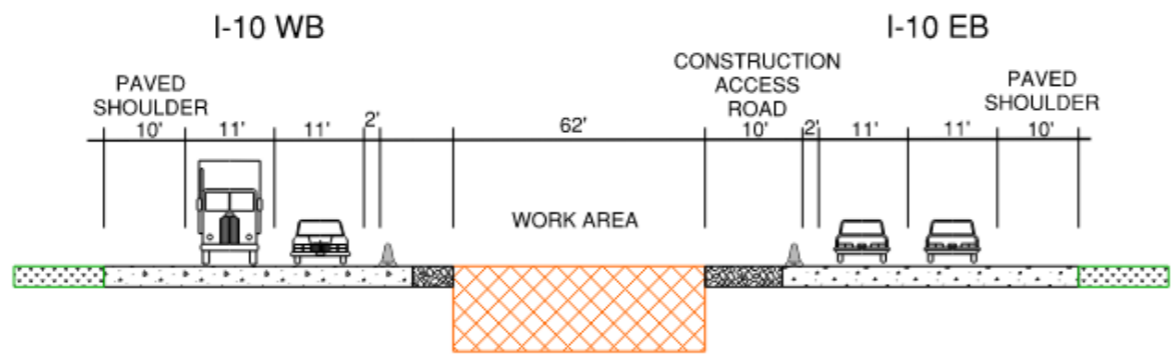
**Emergency Vehicle Access Plan**  
 I-10 Phase 2 Stage 2A Work Area  
 May 15, 2026 - August 2026



Park Ave to MP 263.9



MP 263.9 to Alvernon Way



Off Ramp to Irvington Rd and On Ramp from Irvington Rd Closed  
 Kino Parkway & Palo Verde Loops Closed  
 Park Avenue Ramps to and from East Closed

- Temporary Concrete Barrier
- Work Zone
- Ramp Closure
- Ramp Open

- Police Stations
- Fire Stations
- Hospitals