



**Project Delivery Academy**  
**MODULE 1: Planning and P2P Presentation**  
**7/1/26**

Presented by:

ADOT MPD Planning Team

*Ruth Garcia, Don Sneed, David Proffitt*

# Regional Planning Topics

1. Regional Planning Overview
2. Funding Eligibility & Match
3. COG/MPO Required Documents
4. Statewide Studies
5. Functional Classification & Traffic Counts
6. Tribal Transportation Planning
7. P2P Process (Planning 2 Programming)
8. MPD Planning Contacts

# Regional Planning Overview

## Multimodal Planning Division:

- Planning, Programming, GIS, Transit, Traffic Monitoring, Traffic Demand Modeling, Traffic Safety

## Core responsibilities of MPD Planning Team

- Planning 2 Programming process (P2P)
- Development of Statewide Plans
- 3-C transportation planning with MPOs, COGs, TMAs, and Tribes
- Statewide Planning Services

## MPOs/COGs/TMAs

### Transportation Management Area (TMA)

- 200k urbanized population
- 2 in AZ: MAG & PAG

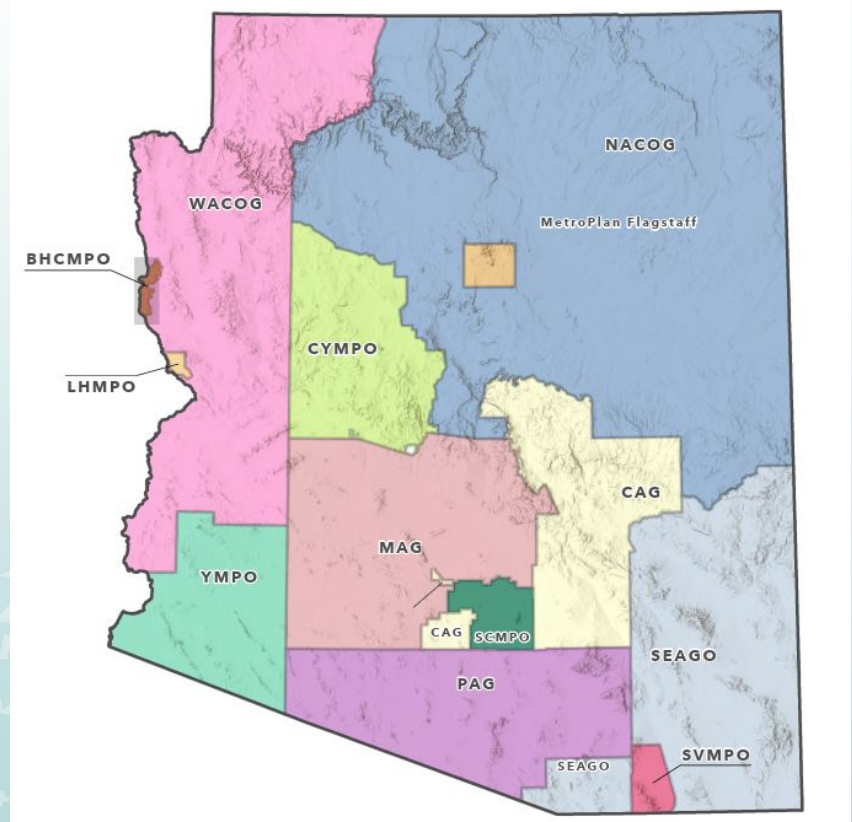
### Metropolitan Planning Organization (MPO)

- 50k urbanized population
- 8 in AZ: BHCMPO, Yavapai Plan, MetroPlan Flagstaff, LHMPPO, SCMPO, SVMPO, & YMPO

### Councils of Government (COG)

- Rural areas, >50k
- 4 in AZ: CAG, NACOG, SEAGO, & WACOG

\*Every town, city, county, or tribe may participate in at least one COG, MPO, or TMA



# COG/MPO Oversight

ADOT/MPD has oversight responsibilities as a direct recipient passing Federal aid to a designated Council of Government (COG) and Metropolitan Planning Organization (MPO)

- Two year grant agreement
- Review and approve COG/MPO federal aid reimbursement requests
- Participate as voting members on COG/MPO committee's as a regional partner providing transportation planning and programming assistance

# Regional Funding Opportunities

- Surface Transportation Block Grant Program (STBG)
- State Planning & Research (SPR)
- Consolidated Planning Grant (CPG) – includes...
  - *Metropolitan Planning (PL) and Transit Planning (5305d)*
- Congestion Mitigation and Air Quality (CMAQ)
- Carbon Reduction Program (CRP)

## ***ADOT Competitive Funding Opportunities***

- Enhanced Mobility of Seniors and Individuals with Disabilities (5310)
- Rural Public Transportation Program (5311)
- Highway Safety Improvement Program (HSIP)
- AZ SMART Program
- ADOT Transportation Alternatives Program (TAP)

# Funding Eligibility

**STBG** - Design & Construction (+ planning, studies, data collection, administration - *most flexible*)

**SPR** - Planning, studies, data collection, administration

**CPG (PL/5305d)** - Planning, studies, data collection, administration  
(MPOs & TMAs only)

**CRP** - Zero-emission vehicles, active transportation (MPOs & TMAs only)

**CMAQ** - Projects that improve air quality (MAG, Nogales only)

**5310** - Buses, equipment, & operations to support elderly & disabled mobility (private nonprofit also eligible)

**5311** - Rural public transit capital, administration, & operations

**HSIP** - Mitigate safety issues

# Funding Local Match Rates

- **STBG** – 5.7%
- **SPR** – 20%
- **CPG (PL/5305d)** – 5.7%
- **CRP** - 5.7%
- **CMAQ** – 0% to 5.7%
- **5310** – 0% to 20%
- **5311** – 0% to 20%
- **HSIP** – 0% to 5.7%
- **ADOT TAP** - 5.7%

**Note:** Match can be both *Hard (cash)* or *Soft (in-kind)*

**Participating** in COG, MPO, or TMA activities **counts as *in-kind***... no cash out of your pocket

# Required Docs

## Other products & services...

- ✓ Planning Studies
- ✓ Transportation Programs
- ✓ Transit Coordination
- ✓ Human Service Programs (COGs/TMAs)
- ✓ Education
- ✓ Training
- ✓ And more...

| Product/ Document                                       | Horizon                    | Contents  | Updates   | Agency |     |     |
|---|----------------------------|---|---|--------|-----|-----|
|   |                            |   |   | TMA    | MPO | COG |
| M/RTP<br>(Metropolitan/Regional<br>Transportation Plan) | 20 years<br>(min.)         | Policies, goals, and strategies   | Every 5 years<br>(4 years for non-attainment<br>and maintenance areas)        | ✓      | ✓   |     |
| UPWP<br>(Unified Planning Work<br>Program)              | 2 years                    | Planning studies and tasks  | Biennially  | ✓      | ✓   |     |
| WP<br>(Work Program)                                    | 2 years                    | Planning studies and tasks  | Biennially  |        |     | ✓   |
| TIP<br>(Transportation<br>Improvement Program)          | 4-5 years                  | Transportation investments by<br>fund type and funding year   | At least every 4 years<br>(period may occur<br>more frequently)               | ✓      | ✓   | ✓   |
| Public Participation Plan                               | N/A                        | Details of the MPO public<br>involvement process  | As needed<br>(to stay in compliance with<br>federal regulations)              | ✓      | ✓   | ✓   |
| Title VI Plan   | N/A                        | Actions taken to meet<br>antidiscrimination laws  | Annually  | ✓      | ✓   | ✓   |
| Regional Coordination<br>Plan                           | N/A                        | Transportation services for people<br>with disabilities, low incomes, and<br>older adults   | Based on TIP and MTP<br>(4 years for non-attainment<br>and maintenance areas) | ✓      | ✓   | ✓   |
| Air Quality Regional<br>Conformity                      | Based on<br>TIP and<br>MTP | Conformity links air quality and<br>transportation planning to ensure<br>transportation activities in non-<br>attainment and maintenance areas<br>are consistent with air quality goals | Based on TIP and MTP<br>(4 years for non-attainment<br>and maintenance areas) | ✓      | ✓   |     |
| Congestion<br>Management Plan                           | Ongoing                    | Provides demand reduction and<br>operational management<br>strategies   | As needed   | ✓      |     |     |

# Statewide Studies Program

## What types of studies?

- Variety of topics to support ADOT technical groups, Districts and Federal Requirements

## Examples include:

- Long Range Transportation Plan
- Freight Plan
- Rail Plan
- Corridor Studies
- Port of Entry Study
- Passing Lane and Climbing Lane Study
- Overhead Sign Structure Study

# Statewide Studies Program

## Project Priorities

- Project selection criteria considers date of last study and need for update, emphasis from ADOT leadership and any new requirements from transportation legislation, etc.

Programmed through MPD's 2-year Work Program

## Transportation Planning Process

- A transportation study includes some or all of the following elements depending on project scope:
  - Vision, goals and objectives
  - Existing and future conditions
  - Needs assessment
  - Develop strategies to address needs
  - Project selection and prioritization
  - Funding and implementation
  - System performance monitoring

# Functional Classification

Before a project goes in the TIP/STIP the road must receive a **Federal Functional Classification**

Functional Classification:

Interstate

Principal Arterial

Minor Arterial

Major Collector

Minor Collector

Local Road (*not eligible for federal aid*)

**Functional Classification Request  
Tool:**

<https://azgeo.az.gov/adot/WeLoveYourInput.aspx#ajax/FCmap.html>

# Highway Performance Management System (HPMS)

Once a road receives Federal Functional Classification, FHWA requires traffic data counts to comply with HPMS.

## Traffic Count Frequency:

Interstate     3 years

Ramps        6 years

Principal Arterial     3 years

Minor Arterial     6 years

Major Collector   6 years

Minor Collector   6 years

Local Road        Not Required

## Traffic Count Tool:

<https://arcg.is/050GK>

OR

## Contact

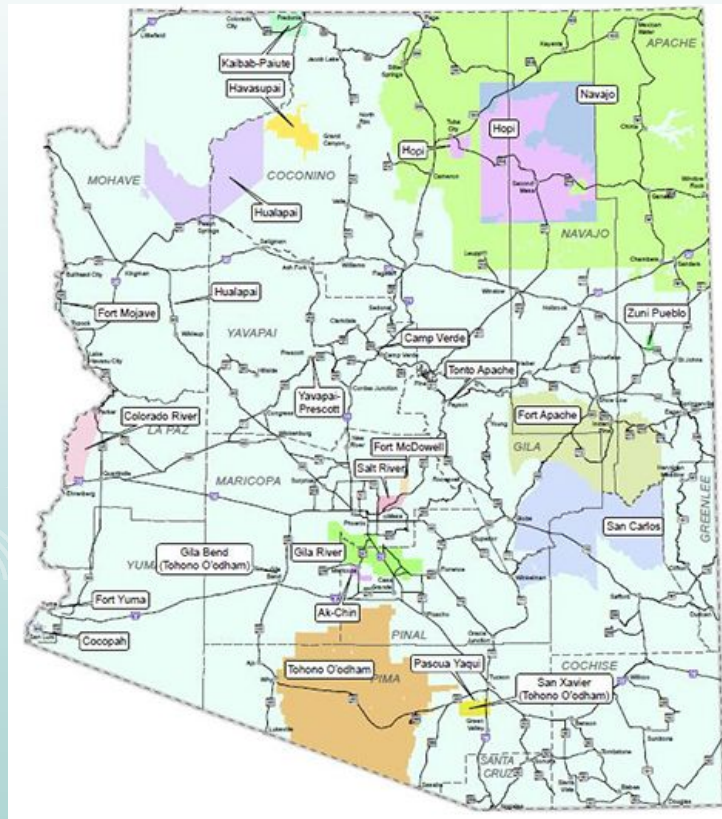
[mpdgis@azdot.gov](mailto:mpdgis@azdot.gov)

# ADOT Tribal Transportation

- 22 federally recognized Indian Tribes, Communities and Native Nations in Arizona with tribal land encompassing approximately 27,736,000 acres or 28% of the State land base.
- 14 Tribal airports and seven Tribal public transit systems situated within Tribal communities throughout Arizona.
- Both State and Tribal governments have the common goal of providing efficient transportation systems for the safety and welfare of the traveling public.
- Arizona Tribal Transportation website:  
<http://www.aztribaltransportation.org/>

# ADOT Tribal Transportation Consultation in AZ

- ADOT Tribal Consultation Policy adopted on September 1, 2006
- ARS Section 41-2051, subsection C and Section 106 of the National Historic Preservation Act – must be considered in Tribal consultation



# ADOT Tribal Transportation Planning

## MPD Planning Program Managers/Tribal Liaisons - Roles & Responsibilities

- Provide transportation planning support and intergovernmental coordination for ADOT's statewide and regional planning projects and programs.
- Coordinate efforts to improve tribal participation in statewide transportation planning and programming processes.
- Provide statewide tribal outreach coordination and consultation assistance to ADOT personnel, planning stakeholders and ADOT consultants and contractors.
- Maintain compliance with A.R.S. 41-2051(C) Responsibilities of State Agencies and ADOT MGT-16.01 Department-Wide Native Nation/Tribal Government Consultation Policy.

# Planning to Programming (P2P) Purpose



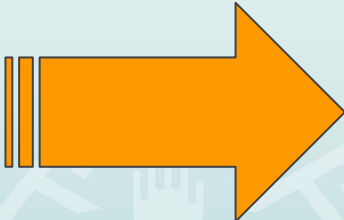
2050 Long-Range Transportation Plan

**ADOT**

**Multimodal Needs Analysis**



*Connecting Arizona. Better Lives Through Better Transportation.*



US-93 & Cone Springs

**2027-2031**

Arizona Department of Transportation  
Five Year Facilities Construction Program

Greater Arizona Highway Projects  
Maricopa County Regional Transportation Plan Freeway Program  
Pima County Regional Transportation Authority Highway Program  
Airport Capital Improvement Program

**ARIZONA**  
— DEPARTMENT OF —  
**TRANSPORTATION**

# Why P2P?

- ❑ **Performance-Based Planning to Programming is the Law**
- ❑ Federal Regulation (FAST Act)
  - 23 USC Section 135(d)(2), and 49 USC Section 5304(d)(2)
- ❑ State Statute
  - ARS Title 28, Chapter 2, Article 7 (§ 28-501 through § 28-507)
- ❑ **Financial Stewardship**
  - Maximize Use of Public Funds

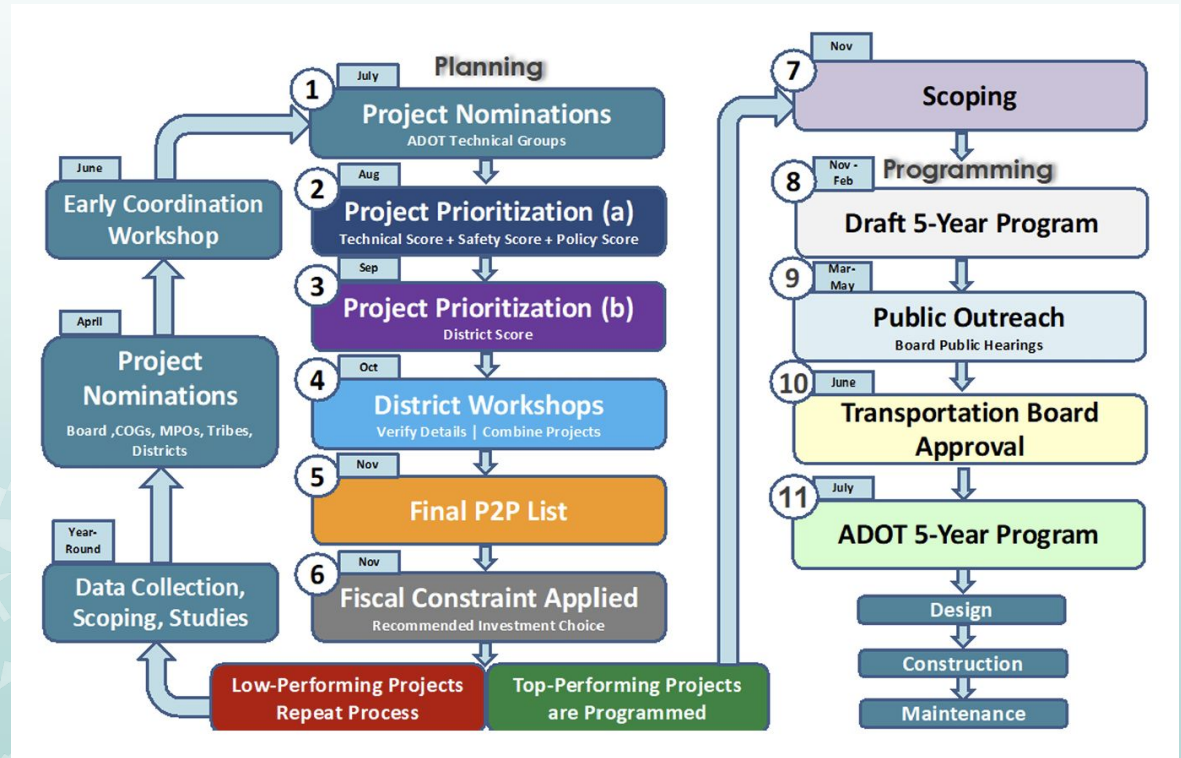
# P2P Roadmap

## Where we are now:

- Assessing new bridge, expansion & modernization projects
- Prioritizing pavement scores, initial scopes

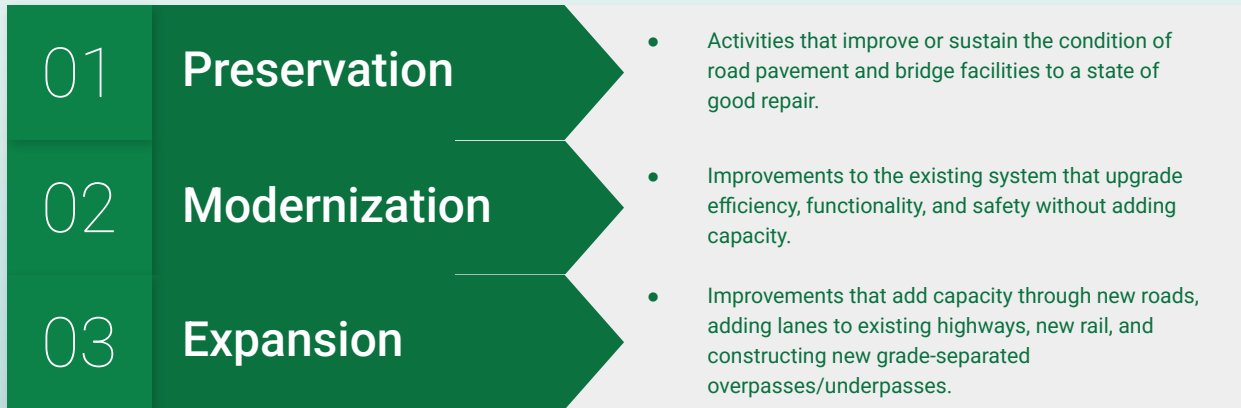
## Looking ahead:

- ADOT technical group input (now-September)
- District input (September-October)



# P2P Project Categories

The P2P process supports investment categories recommended by ADOT's Long-Range Transportation Plan (LRTP):



# Components of P2P Score

The P2P scoring process is comprised of four components:

- Technical score
- District score
- Policy score
- Safety score

## Technical score

- Preservation: Pavement Management Section and Bridge Group.
- Modernization: nominating Technical Group, originating study document, etc.
- Expansion: MPD Modeling and Forecasting Section.



## District score

Each ADOT District's prioritization of projects; reflects local assessments.

## Policy score

Planning-level criteria including freight flow, functional classification, disadvantaged communities, and completed scoping completed during previous P2P cycle (pavement preservation category only).

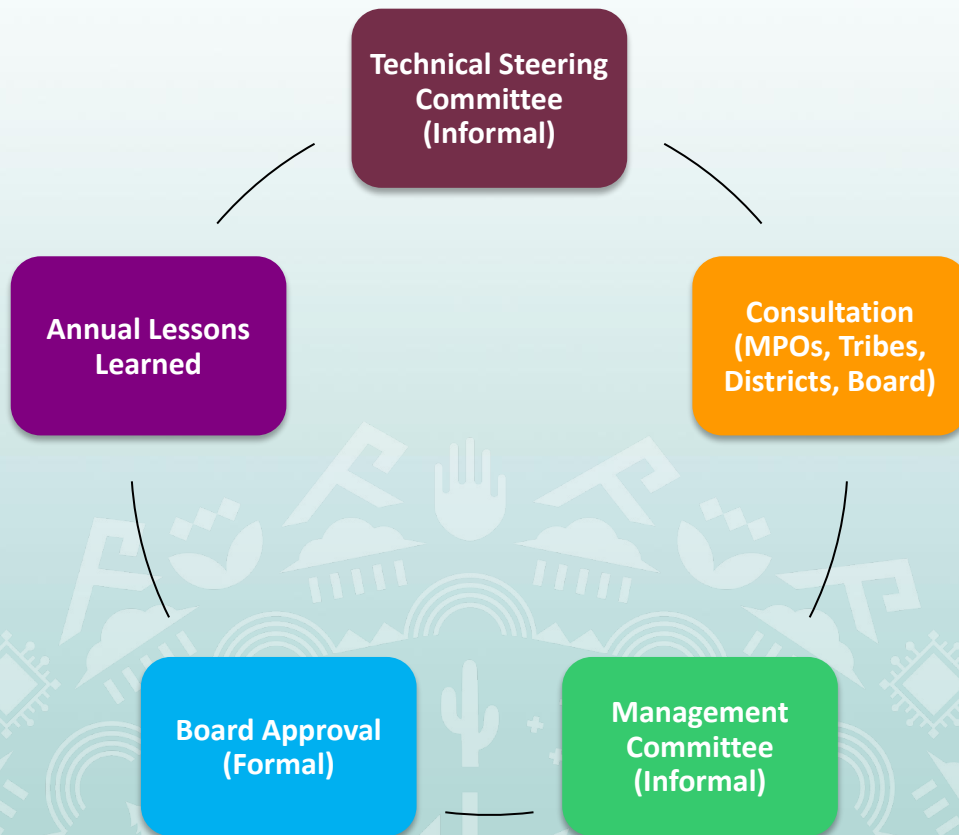
## Safety score

Weighted Level of Safety Service (LOSS) values computed using the P2P Safety Tool (developed in accordance with AASHTO and Highway Safety Manual Part B guidelines)

# P2P Scoring Matrix (Updated 2026)

|                 | Preservation | Modernization | Expansion |
|-----------------|--------------|---------------|-----------|
| Technical Score | 60%          | 35%           | 50%       |
| District Score  | 25%          | 25%           | 15%       |
| Safety Score    | 5%           | 10%           | 10%       |
| Policy Score    | 10%          | 30%           | 25%       |

# Continuous Improvement



# MPD Planning Contacts

- Jennifer Hobert – [jhobert@azdot.gov](mailto:jhobert@azdot.gov) (MPD Regional Planning Section Manager/Active Transportation/TA Program, Regional Planner: YMPO, PAG)
- William Randolph – [wrandolph@azdot.gov](mailto:wrandolph@azdot.gov) (Regional Transportation Planner: BHCMPO, LHMPPO, SCMPO, WACOG, CAG)
- Ruth Garcia – [rgarcia5@azdot.gov](mailto:rgarcia5@azdot.gov) (Regional Transportation Planner: Yavapai Plan, MetroPlan-Flagstaff, NACOG, SEAGO, SVMPO - Assisting with P2P)
- Elaine Mariolle – [emariolle@azdot.gov](mailto:emariolle@azdot.gov) (Active Transportation Planner and TA Program Manager)
- David Proffitt – [dproffitt@azdot.gov](mailto:dproffitt@azdot.gov) (P2P Manager, Tribal Planning Manager, Regional Planner: MAG)
- Don Sneed – [dsneed@azdot.gov](mailto:dsneed@azdot.gov) (Planning Program Manager – Southern Region Tribal Liaison)
- Paula Brown – [pbrown@azdot.gov](mailto:pbrown@azdot.gov) (Planning Program Manager – Northern Region Tribal Liaison)

**Thank you!**

