



**Osterman/Shell Gas Station Redevelopment Scoping  
Project  
HPT-0(200)T  
T0593 03L**

**April 16, 2026  
Public Meeting Summary Report**

**May 2026**

Prepared by Paula Brown  
Arizona Department of Transportation  
Multimodal Planning Division  
1611 West Jackson Street, Phoenix, Arizona 85007

Pursuant to Title VI of the Civil Rights Act of 1964, the Americans with Disabilities Act (ADA) and other nondiscrimination laws and authorities, the Arizona Department of Transportation (ADOT) does not discriminate on the basis of race, color, national origin, sex, age, or disability. Persons that require a reasonable accommodation based on language or disability should contact Paula Brown at 602.342.2779 or [pbrown@azdot.gov](mailto:pbrown@azdot.gov). Requests should be made as early as possible to ensure the State has an opportunity to address the accommodation.

De acuerdo con el Título VI de la Ley de Derechos Civiles de 1964, la Ley de Estadounidenses con Discapacidades (ADA por sus siglas en inglés) y otras normas y leyes antidiscriminatorias, el Departamento de Transporte de Arizona (ADOT) no discrimina por motivos de raza, color, origen nacional, sexo, edad o discapacidad. Las personas que requieran asistencia (dentro de lo razonable) ya sea por el idioma o discapacidad deben ponerse en contacto con Paula Brown al 602.342.2779 o por correo electrónico al [pbrown@azdot.gov](mailto:pbrown@azdot.gov). Las solicitudes deben hacerse lo más antes posible para asegurar que el Estado tenga la oportunidad de hacer los arreglos necesarios.

## TABLE OF CONTENTS

1. INTRODUCTION
2. PUBLIC MEETING
  - 2.1. Public Meeting Notification
    - 2.1.1. Project Website
    - 2.1.2. Project Flyer
    - 2.1.3. News Release
    - 2.1.4. Community Outreach
    - 2.1.5. Stakeholder Outreach
    - 2.1.6. Earned Media
  - 2.2. Public Meeting Materials
    - 2.2.1. Presentation
    - 2.2.2. Information Boards
    - 2.2.3. Blank Floor Plan of Osterman Gas Station
3. PUBLIC COMMENTS
  - 3.1. Summary of Comments
4. TITLE VI REPORTING
  - 4.1. Self-Identification Surveys
  - 4.2. Title VI Meeting Summary

### Appendices

Appendix A. Public Meeting Materials

Appendix B. Advertisement Materials

Appendix C. Earned Media

Appendix D. Public Comments

## 1. INTRODUCTION

The Arizona Department of Transportation, in collaboration with the Hualapai Tribe, has initiated a scoping project to document existing conditions and prepare a conceptual design report for the John Osterman/Shell Gas Station, which has been listed on the National Register of Historic Places since 2012. Also, the National Trust for Historic Preservation named the Osterman Gas Station to its America's Most Endangered Historic Places list in 2023, which highlights diverse locations facing threats from development, neglect and climate change. The scoping project will be used to support future preservation and adaptive reuse projects and guide funding decisions. The historic gas station is located on the Hualapai Reservation in Peach Springs in Northwestern Arizona at 888 Historic Route 66.

### Project Map



### History/Background

The Hualapai Tribe Planning and Economic Development Department was awarded ADOT Transportation Alternatives Program funding for the redevelopment of the Osterman/Shell Gas Station. The Tribe originally submitted this project for design. It was determined that a scoping effort was required prior to design in order to establish a comprehensive scope of work and cost estimate. Through an Intergovernmental Agreement with the Tribe, the ADOT is administering the scoping project. The final design and construction phase of the project will be addressed in a separate agreement, as applicable.

## 2. PUBLIC MEETING

A public involvement meeting was held in Peach Springs at the Multi-Purpose Building, 470 Hualapai Way, from noon to 1:30 p.m. on Thursday, April 16, to allow community members and others to learn about the project and provide feedback. The purpose of the meeting was to seek input from a variety of tribal and non-tribal community members and other stakeholders that will be used in putting together the Conceptual Design Report for the Osterman Gas Station Redevelopment Scoping Project. The public was given opportunities to ask questions, provide input and express their opinions. The meeting included a PowerPoint presentation followed by an open house. Interpretation services were available for the Hualapai members, if needed. Participants could provide comments through discussion with the

project team, survey responses, post-it notes on alternative boards, and comment cards. The following project team members from ADOT and the Hualapai Tribe served as presenters:

- Paula Brown - ADOT
- Kevin Davidson - Hualapai Tribe

An ADOT staff member from Communications and Public Involvement was present to assist with monitoring the sign-in table, facilitating in-person discussions and reading the Title VI Nondiscrimination Notice to the Public slide in English to all attendees, as well as how to complete the Self-Identification Survey. Following completion of the public meeting, participants were sent the meeting materials and were encouraged to submit additional comments through the end of the comment period. The public meeting consisted of:

- Open house with an opportunity to view project plans and exhibits and speak with project team members.
- Formal presentation by the project team.
- Question-and-answer session with the project team.
- Opportunity for attendees to provide feedback and comments to the project team.

A total of 25 people attended the in-person public meeting. From the 25 attendees, 47 comments and 11 Self-Identification survey responses were received.

## **2.1 Public Meeting Notification**

### **2.1.1 Project Website**

ADOT hosted a project website ([azdot.gov/Osterman-Peach-Springs](https://azdot.gov/Osterman-Peach-Springs)), which was launched in January 2026 at the start of the project. The project website provides a project overview, including the project location, project schedule outlining critical path activities, details on the public involvement, project contact information, and documents and presentations developed as part of the scoping project. All materials related to the public meeting are posted to the project website, including:

- Project flyer
- Public meeting agenda and presentation

### **2.1.2 Project Flyer**

A project flyer was developed and posted to the project website at [azdot.gov/Osterman-Peach-Springs](https://azdot.gov/Osterman-Peach-Springs). The project flyer includes a brief overview of the scoping project, project schedule with critical path activities, public meeting information, project management contact information. and a link to the project website. The project flyer and other advertisement methods can be found in **Appendix B**.

### **2.1.3 News Release**

### **2.1.4 Community Outreach**

As part of the community outreach efforts, the KWLP FM 100.9 Hualapai Tribe Radio Station interviewed ADOT Community Relations Project Manager Michele Beggs from 8 - 8:30 a.m. Monday, March 16. In addition, a Tribal staff member posted the project flyer at places of establishment in the Tribal

community such as at the: Tribal administration Offices, Senior Services Center, Multi-Purpose Building, U.S Post Office, Hualapai Lodge, Health-Education-Wellness Center, Training Center and the Indian Health Services Clinic. The project flyer was also distributed at the Osterman Centennial Event and the Tribe's General Meeting. The flyer provided information about the in-person public meeting. The project flyer and other advertisement methods can be found in **Appendix B**.

### 2.1.5 Stakeholder Outreach

Early in the project development process, a list of key stakeholders, including local leaders and officials, Tribal staff members and others who may have an interest in the project was created. These stakeholders were invited to participate in the project kick-off meeting, project site visit and the public meeting. Engaging these stakeholders represented a full range of interests, values and opinions. Stakeholders included:

- Hualapai Tribal Council
- Hualapai Tribal Historic Preservation Office
- Hualapai Planning and Economic Development Department
- Hualapai Public Works Department
- Hualapai Tribe Transportation Department
- State Historic Preservation Office
- USDOT Federal Highway Administration/Arizona Division
- Bureau of Indian Affairs Western Region
- Western Association Council of Governments
- ADOT Northwest District
- ADOT Multimodal Planning Division
- ADOT Environmental Planning Group
- ADOT Communications and Public Involvement
- ADOT State Engineer's Office
- Motley Design Group
- Axiomaz
- Slaysman Engineering
- Grand Canyon Resort Corporation
- Saving Places (National Trust for Historic Preservation)

### 2.1.6 Earned Media

The public meeting notice was advertised in the GamYu Newsletter in March and April 2026. The tribal newsletter is distributed monthly to community members. A copy of the media notice is shown in **Appendix C**.

- March 2026 - Hualapai Tribe's Gamyu Newsletter - an article was published in the newsletter about the project and upcoming public meeting.
- April 2026 - Hualapai Tribe's Gamyu Newsletter - Another article was published in the newsletter about the project and upcoming public meeting.

## 2.2. Public Meeting Materials

A variety of public meeting materials were made available to the public in English and Spanish during and following the in-person meeting. These public meeting materials included:

- Presentation
- Information Boards
- Blank Copy of Osterman Gas Station Floor Plan

Copies of the materials listed above can be found in **Appendix A**.

### 2.2.1 Presentation

The presentation can be found in **Appendix A** and covered the following topics:

- Project Overview, Purpose, Objectives and Goals
- Critical Path Activities
- Update on Background and History of the Osterman Gas Station
- Update on Planning Concept of the Redevelopment of the Osterman Gas Station
- Open House (How to Provide Input and Questions and Answer Session)

### 2.2.2 Information Boards

The public meeting information boards can be found in **Appendix A** and covers the following information:

- What We Heard (Culture and Story, History and Identity, Community Needs, Future Opportunity)
- Opportunities Across the Site
- Focus of the Project
- What Needs to Fit in this Building? (What is already here today? How should restrooms work? Options 1 and 2)
- Enclosed Conditioned Approach (Features, Building Updates, Character)
- Open Air Approach (Features, Exhibits, Daily Use)
- Your Input (Which direction feels right for this place? What feels most important to preserve or share? How would you want to use this space? What concerns or questions do you have? What are we missing?)
- ADA/Title VI Nondiscrimination Notice to the Public

### 2.2.3 Blank Floor Plan of Osterman Gas Station

A blank copy of the floor plan of the Osterman Gas Station was made available for attendees to view and to write in their comments and feedback. This format was an alternative method used that allowed attendees to write in their comments and preferences for related features and future utilization of the space. A copy of the blank floor plan is in **Appendix A**.

## 3. PUBLIC COMMENTS

This section summarizes the comments received throughout the duration of the scoping project. Beginning with the initial project site visit on January 27 where the ADOT project team met with tribal elders from the community and received their input. Comments were also collected during the public comment period from April 7 through April 23 as well as from comments received during the April 16 public meeting. In addition, public comments were submitted through the following methods: USPS mail, telephone, email and via the project website. A total of 68 comments were received. The public comments are included in **Appendix D**.

- In-Person Meeting with Community Elders 1/27/26: 11 Comments
- In-Person Public Meeting 4/16/26: 47 Comments
- Project Information Website: 10 Comments
- USPS Mail: 0
- Telephone: 0

#### 4.1 Summary of Comments

Many similar comments were received during the public-comment period. Based on comments received, the project team incorporated key elements into Space Planning Iteration One and Space Planning Iteration Two. This resulted in the development of the final Conceptual Design Plan. A snapshot of comments received to create a vision for the space are identified below:

- Preservation of the Hualapai language and culture is very important and promoting educational videos/recordings of the history, language, and creation story should be maintained.
- A museum would be a perfect place to capture those key elements of the Tribe.
- Tourists have traveled Route 66 from Chicago to Los Angeles, this stop could be a place for rest for those on a journey through the Hualapai land.
- Future vision would be for a Peach Springs Visitor Center/Museum/Gift Shop.
- A preference for a museum where historic information will be shared on Peach Springs and Route 66, and how Route 66 impacted the Hualapai people.
- This redevelopment of the historic gas station will present a valuable opportunity to boost visitor intake into the community by serving as a visitor center that highlights the rich history of the area.
- Retention of historic character of the Osterman Gas Station.
- Preservation of distinctive features, finishes and craftsmanship of the Osterman Gas Station
- The new space will boost the economic development in the area.

#### 4. TITLE VI REPORTING

##### 5.1 ADOT Self-Identification Survey

Public meeting attendees were asked to complete the voluntary ADOT Self-Identification Survey for Title VI reporting purposes. A total of 11 people completed the Self-Identification Survey out of 25 attendees. This excludes the presenters and ADOT staff that were present. The responses were as follows:

White: 1  
African American/Black: 1  
American Indian/Alaskan Native: 8  
Native Hawaiian/Other Pacific Islander: 1  
Asian: N/A  
Hispanic/Latino: N/A

##### 5.2 Title VI Meeting Summary

A Civil Rights Title VI Meeting Summary report documenting ADOT's compliance with Title VI and Title II nondiscrimination and accommodations was submitted to the External Civil Rights Office on April 21, 2026.

## Appendices

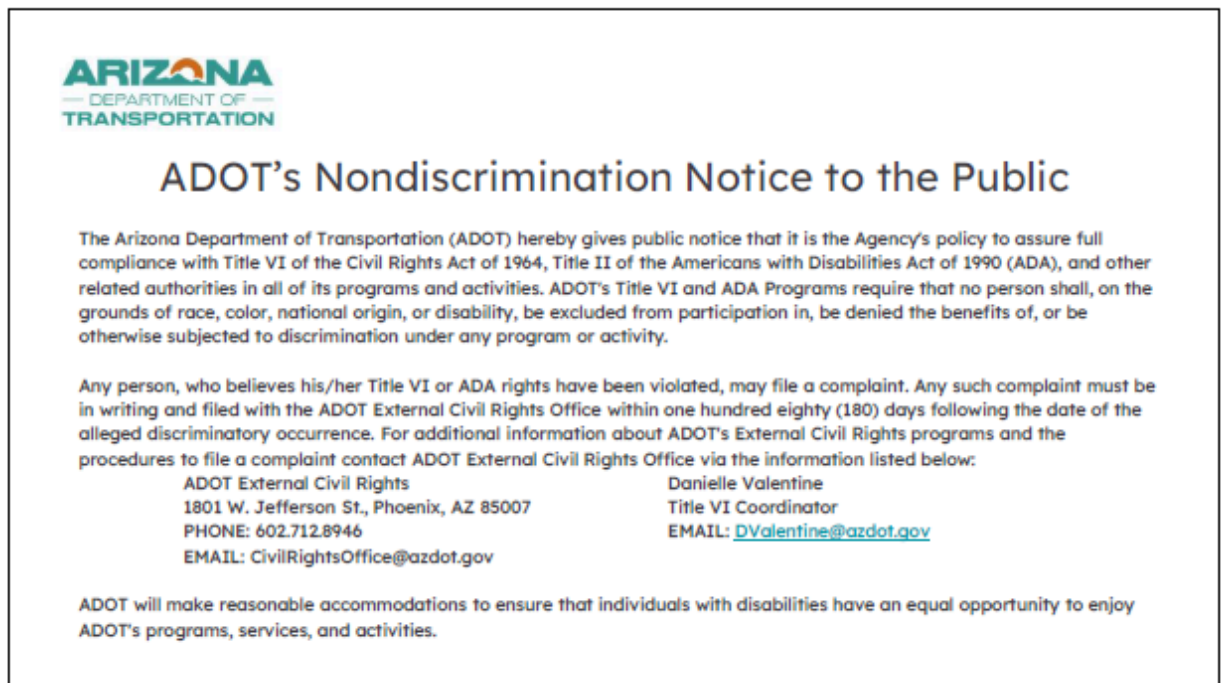
### Appendix A. Public Meeting Materials

- Presentation
- Information Boards
- Blank Floor Plan of Osterman Gas Station

Presentation




1






2

Osterman/Shell Gas Station Redevelopment Scoping Project



## Introduction

*ARIZONA DEPARTMENT OF TRANSPORTATION in Partnership with,*



3

3

Osterman/Shell Gas Station Redevelopment Scoping Project



## Agenda

- ADOT Multimodal Planning
  - Project Overview
- Hualapai Tribe Update
  - Background and History
- MOR Studio Update
  - Planning Concept
- Open House



4

4



### Osterman Gas Station - Before and after 2021 Micro-Burst



Front of building in 2014



Rear of building in 2016



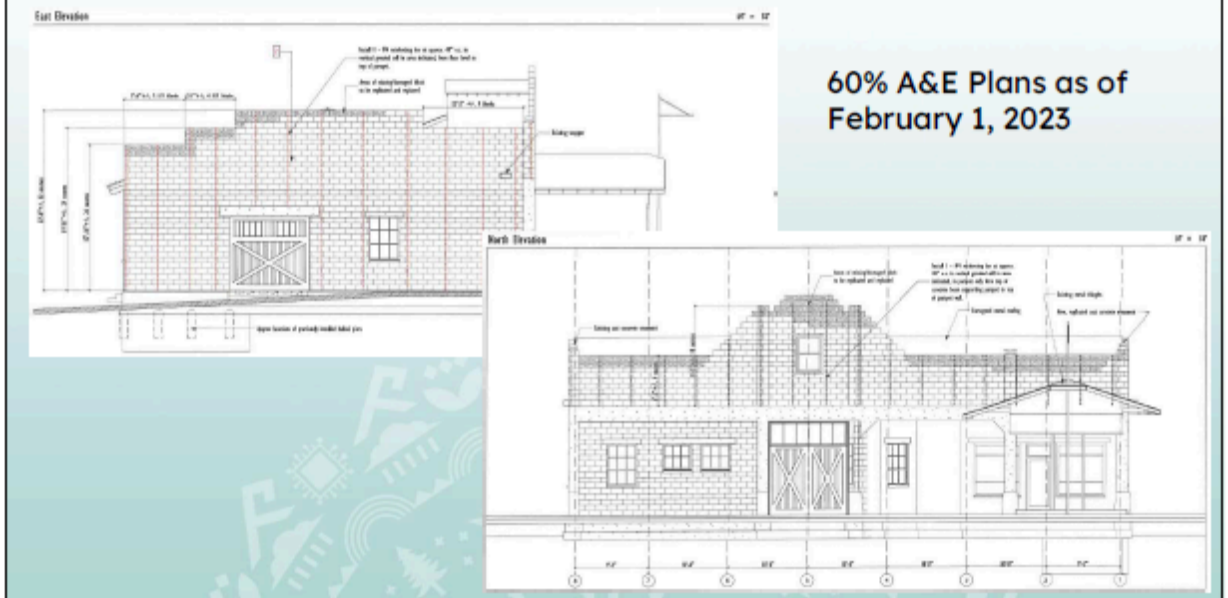
Front of building in late 2021



Rear of building in late 2021

7

### Osterman Gas Station - Tribe's Efforts Post-2021 Micro-Burst



8

## Osterman Gas Station - Damage from Second Storm

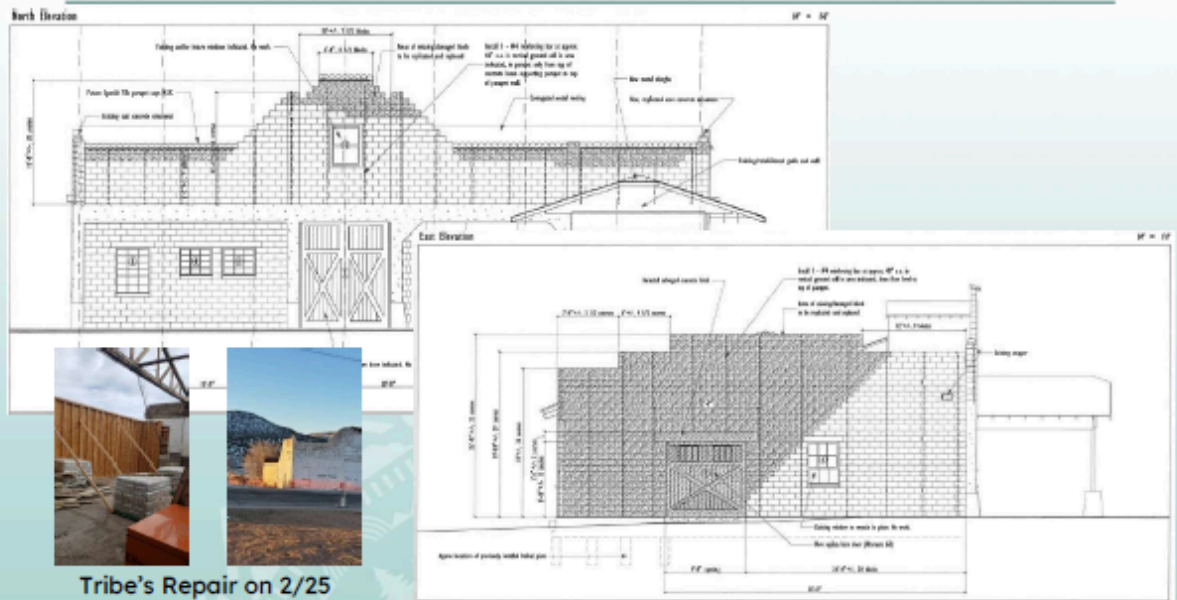
Morning after the February 22, 2023, Storm.



Okay, now what?

9

## Osterman Gas Station - Tribe's Efforts After Second Storm



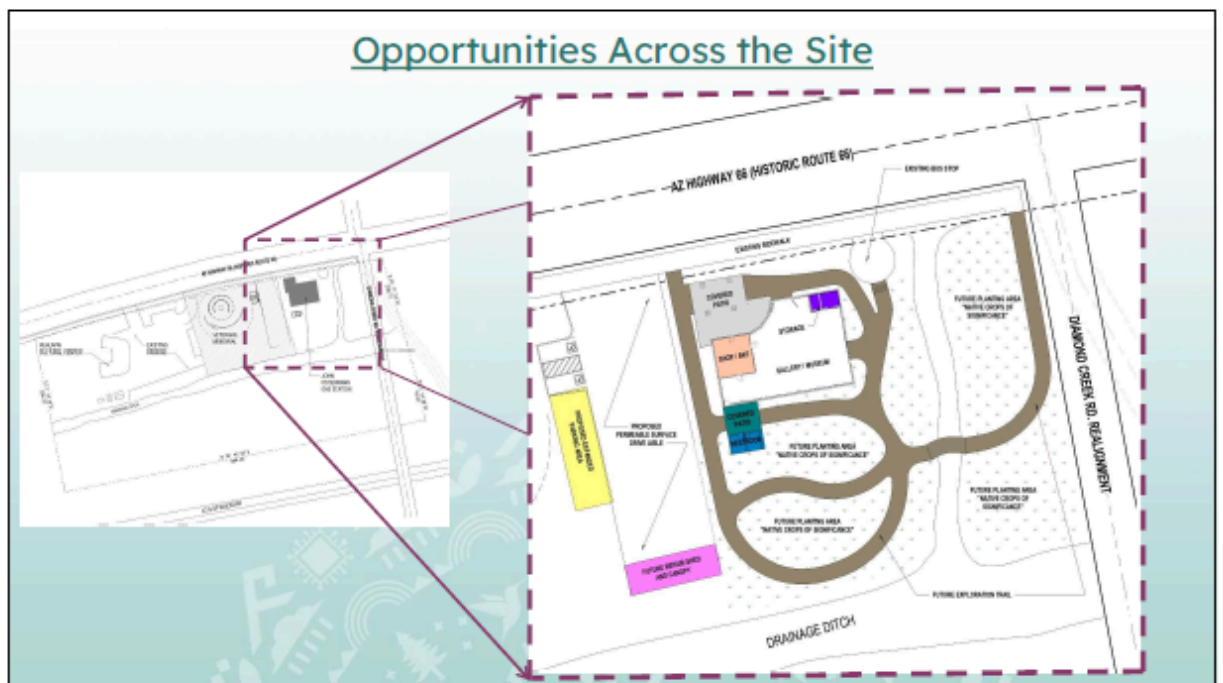
10

### What We Heard

 <p><b>CULTURE &amp; STORY</b></p> <ul style="list-style-type: none"> <li>• Hualapai and Peach Springs history</li> <li>• Language, music, traditions, family stories</li> <li>• Rotating exhibits and community displays</li> </ul>	 <p><b>HISTORY &amp; IDENTITY</b></p> <ul style="list-style-type: none"> <li>• Cultural pride &amp; difficult history</li> <li>• Route 66 and automobile history</li> <li>• Preservation of gas pumps</li> </ul>
 <p><b>COMMUNITY NEEDS</b></p> <ul style="list-style-type: none"> <li>• Basic auto repair services</li> <li>• Space to gather, relax, and host events</li> <li>• Youth engagement and learning</li> </ul>	 <p><b>FUTURE OPPORTUNITY</b></p> <ul style="list-style-type: none"> <li>• Attract visitors</li> <li>• Meaningful for residents</li> <li>• Support long-term community use</li> </ul>

January 27, 2026 | Lunch at Senior Services Center with Tribe Elders

11



12



13

### What needs to fit in this Building?

What's already here today?

- Main volume of open space
- Office area
- Small restroom
- Storage room
- Basement

How should restrooms work?


**OPTION 1 – INSIDE THE BUILDING**

- Located within the existing structure
- Uses space from the main interior
- May be more difficult to update
- Keeps everything in one building

**OPTION 2 – NEW SUPPORT BUILDING**

- Separate restroom building
- Creates outdoor space
- Allows room for inclusive needs
- Keeps existing building more intact

14



**Enclosed  
Conditioned  
Approach**

**FEATURES**

- Fully enclosed and climate-controlled building
- Functions like a museum or visitor space
- Supports protected and curated exhibits
- More defined interior spaces and organization
- Designed for year-round comfort and use

**BUILDING UPDATES**

- Requires adding walls, ceilings, and insulation
- Needs systems to control temperature and air

**CHARACTER**

- Some original features may be covered or changed
- Balances comfort with preserving the building

15



**Open  
Air  
Approach**

**FEATURES**

- Keeps the building mostly open as it is today
- Creates a flexible space for gathering, events, and daily use
- Focuses on storytelling through images and graphics
- Displays are designed to handle outdoor conditions
- Small office area can be climate-controlled for daily use

**EXHIBITS**

- Durable and low maintenance
- Not a traditional museum setup

**DAILY USE**


- Regular presence helps keep the space active and cared for

16

Your Input

Which direction feels right for this place?  
What feels most important to preserve or share?  
How would you want to use this space?  
What concerns or questions do you have?  
What are we missing?

**Han'Kyu**



17

Osterman/Shell Gas Station Redevelopment Scoping Project



Open House

- Public Comments can be provided as follows:
  - In Person
  - Project Display Boards
  - Blank Floor Plan
  - Comment Card
  - Project Website
- Visit Display Boards



18



**Thank You!**

Thank you Hualapai Tribe, members of the community and public. We appreciate your interest in the redevelopment of the historic Osterman/Shell Gas Station Project.

Paula Brown, Project Manager  
ADOT Multimodal Planning  
[pbrown@azdot.gov](mailto:pbrown@azdot.gov)

Arnoldo Artiles, PE, Sr. Project Manager  
Kimley-Horn  
[www.kimley-horn.com](http://www.kimley-horn.com)

Michelle Rutkowski, AIA, LEED AP  
Jason Danielak, AIA, NCARB, WELL<sub>AP</sub>  
MOR Studio LLC  
[www.morstudio.net](http://www.morstudio.net)

Visit the project website at: [azdot.gov/Osterman-Peach-Springs](https://azdot.gov/Osterman-Peach-Springs)



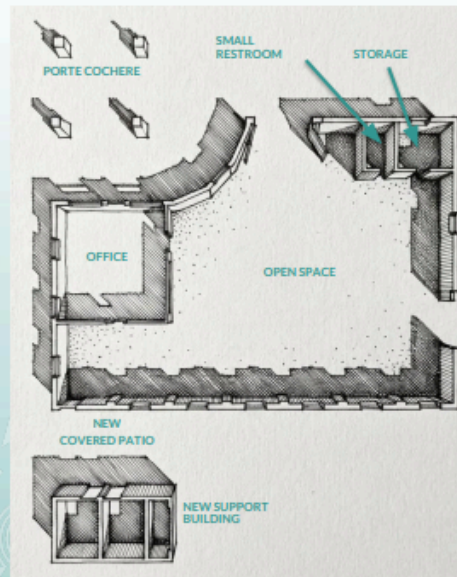
### Focus of this Project



### What needs to fit in this Building?

#### What's already here today?

- Main volume of open space
- Office area
- Small restroom
- Storage room
- Basement



#### How should restrooms work?

##### **OPTION 1 – INSIDE THE BUILDING**

- Located within the existing structure
- Uses space from the main interior
- May be more difficult to update
- Keeps everything in one building

##### **OPTION 2 – NEW SUPPORT BUILDING**

- Separate restroom building
- Creates outdoor space
- Allows room for inclusive needs
- Keeps existing building more intact



Enclosed  
Conditioned  
Approach

**FEATURES**

- Fully enclosed and climate-controlled building
- Functions like a museum or visitor space
- Supports protected and curated exhibits
- More defined interior spaces and organization
- Designed for year-round comfort and use

**BUILDING UPDATES**

- Requires adding walls, ceilings, and insulation
- Needs systems to control temperature and air

**CHARACTER**

- Some original features may be covered or changed
- Balances comfort with preserving the building



Open  
Air  
Approach

**FEATURES**

- Keeps the building mostly open as it is today
- Creates a flexible space for gathering, events, and daily use
- Focuses on storytelling through images and graphics
- Displays are designed to handle outdoor conditions
- Small office area can be climate-controlled for daily use

**EXHIBITS**

- Durable and low maintenance
- Not a traditional museum setup

**DAILY USE**

- Regular presence helps keep the space active and cared for

## Your Input

Which direction feels right for this place?

What feels most important to preserve or share?

How would you want to use this space?

What concerns or questions do you have?

What are we missing?

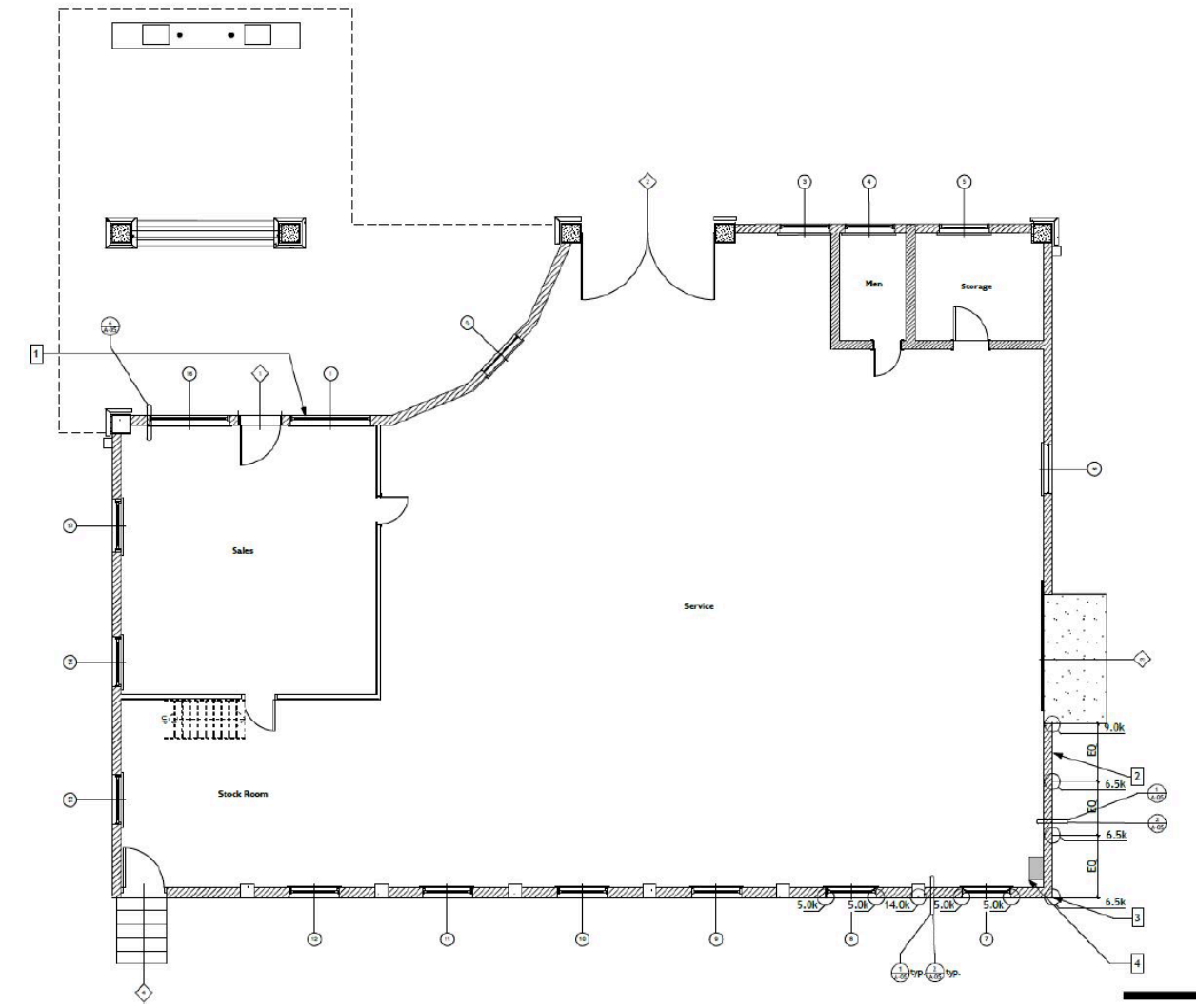
**Han’Kyu**

**Kimley»Horn**

**NDR**  
STUDIO

**ARIZONA**  
— DEPARTMENT OF —  
**TRANSPORTATION**

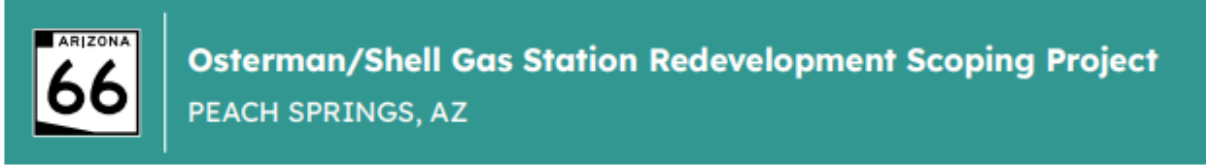
**Blank Floor Plan - Osterman Gas Station**



## Appendix B. Advertisement Materials

- Project Flyer
- News Release
- Community Outreach Postings

[Project Flyer](#)



**PROJECT OVERVIEW**

The Arizona Department of Transportation (ADOT), in collaboration with the Hualapai Tribe, has initiated a project to document existing conditions and prepare a conceptual design report for the John Osterman/Shell Gas Station, which is listed on the National Register of Historic Places. The scoping project will be used to support future preservation and adaptive reuse projects and guide funding decisions. The historic gas station is located on the Hualapai Reservation in Peach Springs in Northwestern Arizona at 888 Historic Route 66.



**PROJECT SCHEDULE**

**Critical Path Activities:**

- ▶ Official kickoff meeting - Jan. 13, 2026
- ▶ Initial site visit - Jan. 27, 2026
- ▶ Public meeting comment period opens: April 7, 2026
- ▶ Public meeting with tribal community members, stakeholders and others - April 16, 2026
- ▶ Public meeting comment period closes: April 23, 2026
- ▶ Review of space planning - April-May 2026
- ▶ Conceptual design report - June 2026



**VISIT OUR PROJECT WEBSITE!**  
[azdot.gov/Osterman-Peach-Springs](http://azdot.gov/Osterman-Peach-Springs)

**PUBLIC INVOLVEMENT**

ADOT is seeking input from a variety of tribal and non-tribal community members and other stakeholders that will be used in putting together the conceptual design report for the Osterman Gas Station Redevelopment Scoping Project. The public will be given opportunities to ask questions, provide input and express their opinions through two primary methods.

**Public Meeting**

One public involvement meeting will be held in Peach Springs at the multi-purpose building to allow community members and others to learn about the project and provide feedback.

**Public Comment Period**

A public comment period will be held from April 7 through April 23 to provide residents with additional opportunities to ask questions and provide comments about the project. More information will be provided prior to the comment period.

**STAY INFORMED/CONTACT US**

ADOT welcomes your questions and comments. You may contact the ADOT project manager by the following methods:

- ▶ **By email/phone:** Contact Paula Brown at [PBrown@azdot.gov](mailto:PBrown@azdot.gov) and 602.342.2779
- ▶ **Teléfono:** Línea de Información del Proyecto ADOT: 855.712.8530
- ▶ **By mail:** ADOT Multimodal Planning Division, 1611 W. Jackson St., MD 310B, Phoenix, AZ 85007

Pursuant to Title VI of the Civil Rights Act of 1964, the Americans with Disabilities Act (ADA) and other nondiscrimination laws and authorities, ADOT does not discriminate on the basis of race, color, national origin, sex, age, or disability. Persons that require a reasonable accommodation based on language or disability should contact Paula Brown at 602.342.2279 or [PBrown@azdot.gov](mailto:PBrown@azdot.gov). Requests should be made as early as possible to ensure the State has an opportunity to address the accommodation.

De acuerdo con el Título VI de la Ley de Derechos Civiles de 1964, la Ley de Estadounidenses con Discapacidades (ADA por sus siglas en inglés) y otras normas y leyes antidiscriminatorias, el Departamento de Transporte de Arizona (ADOT) no discrimina por motivos de raza, color, origen nacional, sexo, edad o discapacidad. Las personas que requieran asistencia (dentro de lo razonable) ya sea por el idioma o discapacidad deben ponerse en contacto con Paula Brown al 602.342.2279 o [PBrown@azdot.gov](mailto:PBrown@azdot.gov). Las solicitudes deben hacerse lo más antes posible para asegurar que el Estado tenga la oportunidad de hacer los arreglos necesarios.

26-881125 Rev 3-9-26



[News Release](#)

SHARE

## ADOT seeks input on Osterman Gas Station preservation and reuse in Peach Springs

*Public meeting set for April 16 on historic gas station along Route 66*

KINGMAN – The Arizona Department of Transportation, in collaboration with the Hualapai Tribe, will host a public meeting on Thursday, April 16, to obtain community input for preservation and reuse of the historic Osterman/Shell Gas Station on Route 66 in Peach Springs.

The meeting is part of an effort to document existing conditions and prepare a Conceptual Design Report on the gas station. This work will be used to support future preservation and adaptive reuse of the site, which is listed on the National Register of Historic Places.



The public meeting is scheduled from noon to 1:30 p.m. Thursday, April 16, at the Peach Springs Multi-Purpose Building, [470 Hualapai Way](#) in Peach Springs. The meeting will include an open house, a presentation and a question-and-answer session.

In addition to providing comments at the public meeting, public comments may be submitted to Paula Brown, ADOT Project Manager, from April 7-23 in the following ways:

- Email: [pbrown@azdot.gov](mailto:pbrown@azdot.gov)
- Phone: 602.342.2779
- Mail: Paula Brown, ADOT Multimodal Planning Division, [1611 W. Jackson St.](#), MD 310B, Phoenix, AZ 85007

The presentation and meeting exhibits will be posted to the project webpage on Friday, April 17: [azdot.gov/Osterman-Peach-Springs](http://azdot.gov/Osterman-Peach-Springs).

The Osterman/Shell Gas Station is located at [888 Historic Route 66](#). For more information on the project, please visit [azdot.gov/Osterman-Peach-Springs](http://azdot.gov/Osterman-Peach-Springs).

### Reminder to update your subscriber preferences

Want to be notified of traffic restrictions on other ADOT highway corridors, projects and studies happening around Arizona? Update your subscriber preferences [here](#).

---

*Schedules are subject to change based on weather and other unforeseen factors. For more information, please call the ADOT Bilingual Project Information Line at 855.712.8530 or go to [azdot.gov/contact](http://azdot.gov/contact) and select **Projects** from the drop-down menu. For real-time highway conditions statewide, visit ADOT's Traveler Information Site at [www.az511.gov](http://www.az511.gov), download the [AZ511 app](#) or call 511. Need to know where a milepost is? Click on the "Mile Markers" icon on the map at [www.az511.gov](http://www.az511.gov).*

---

To plan your trip, get travel times or see ADOT cameras, download the [AZ 511 app](#).

The Arizona Department of Transportation advises drivers to use the designated detours when there are closures on state highways.

Visit us on social media on [Facebook](#), [Twitter](#), [YouTube](#), [Flickr](#) or the [ADOT blog](#).

SUBSCRIBER SERVICES:

[Manage Preferences](#) | [Delete Profile](#) | [Help](#)

[Civil Rights/ADA](#) | [Derechos Civiles/ADA](#)

For more information, visit [azdot.gov](http://azdot.gov)

Community Outreach Postings

Postings for Osterman/Shell Gas Station Public Meeting on April 16, 2026



Planning Office on 3/9/2026



Peach Springs Post Office bulletin board on 4/10/2026



Hualapai Lodge bulletin board on 4/10/2026



Osterman/Shell station on 4/11/2026 for Centennial Event



Tribal Administration Office front door on 4/13/2026



Tribal Administration Office bulletin board on 4/13/2026



Tribal Administration Office Dept Mailbox on 4/13/2026



Tribal Administration Office council in-box on 4/13/2026

### Postings for Osterman/Shell Gas Station Public Meeting on April 16, 2026



Health, Education & Wellness bulletin board on 4/13/2026



Training Center bulletin board on 4/13/2026



Senior Center bulletin board on 4/13/2026



Planning Office front door on 4/13/2026



Multi-Purpose Building front door on 4/13/2026



Multi-Purpose Building bulletin board on 4/13/2026



Planning's booth at Tribe's General Meeting 4/17/2026



Indian Health Services Clinic bulletin board on 4/14/2026

### **Appendix C. Earned Media**

- GamYu Newsletter - March 2026 Issue
- GamYu Newsletter - April 2026 Issue

Earned Media

MARCH ISSUE
PAGE 13

**ARIZONA 66 • OSTERMAN/SHELL GAS STATION REDEVELOPMENT SCOPING PROJECT**  
*Submitted by: Rachael DeFord | Walapai Media*



## Osterman/Shell Gas Station Redevelopment Scoping Project

PEACH SPRINGS, AZ

**PROJECT OVERVIEW**

The Arizona Department of Transportation (ADOT), in collaboration with the Hualapai Tribe, has initiated a project to document existing conditions and prepare a conceptual design report for the John Osterman/Shell Gas Station, which is listed on the National Register of Historic Places. The scoping project will be used to support future preservation and adaptive reuse projects and guide funding decisions. The historic gas station is located on the Hualapai Reservation in Peach Springs in Northwestern Arizona at 888 Historic Route 66.

**PROJECT SCHEDULE**

**Critical Path Activities:**

- ▶ Official Kickoff Meeting - Jan. 13, 2026
- ▶ Initial Site Visit - Jan. 27, 2026
- ▶ Public Meeting comment period opens: April 7, 2026
- ▶ Public Meeting with Tribal Community Members, Stakeholders and Others - April 16, 2026
- ▶ Public Meeting comment period closes: April 23, 2026
- ▶ Review of Space Planning - April-May 2026
- ▶ Conceptual Design Report - June 2026

**VISIT OUR PROJECT WEBSITE!**

[azdot.gov/Osterman-Peach-Springs](http://azdot.gov/Osterman-Peach-Springs)



**PUBLIC INVOLVEMENT**

ADOT is seeking input from a variety of tribal and non-tribal community members and other stakeholders that will be used in putting together the Conceptual Design Report for the Osterman Gas Station Redevelopment Scoping Project. The public will be given opportunities to ask questions, provide input and express their opinions through two primary methods.

**Public Meeting**  
 One public involvement meeting will be held in Peach Springs at the Multi-Purpose Building to allow community members and others to learn about the project and provide feedback.


**Public Comment Period**  
 A public comment period will be held from April 9 through April 23 to provide residents with additional opportunities to ask questions and provide comments about the project. More information will be provided prior to the comment period.

**STAY INFORMED/CONTACT US**

ADOT welcomes your questions and comments. You may contact the ADOT Project Manager by the following methods:

- ▶ **By email/phone:** Contact Paula Brown at [PBrown@azdot.gov](mailto:PBrown@azdot.gov) and 602.342.2779
- ▶ **Teléfono:** Línea de Información del Proyecto ADOT: 855.712.8530
- ▶ **By mail:** ADOT Multimodal Planning Division, 1611 W. Jackson St., MD 310B, Phoenix, AZ 85007





26-000815

26-001125 Rev 2-10-26



**Public Meeting for Osterman/Shell Gas Station Redevelopment Project • Thursday, April 16<sup>th</sup>**  
*Submitted by: Michele Beggs | Arizona Department of Transportation*

**Public meeting for the Osterman/Shell Gas Station Redevelopment project scheduled for April 16 in Peach Springs**

*Learn more about the historic landmark and provide input on potential future uses*

The Arizona Department of Transportation, in collaboration with the Hualapai Tribe, will host a public meeting April 16 to obtain community input on the Osterman/Shell Gas Station Redevelopment Scoping project.

The public meeting will be held from noon to 1:30 p.m. Thursday, April 16, at the Peach Springs Multi-Purpose Building, 470 Hualapai Way in Peach Springs. There will be an open house, a presentation and a question-and-answer session.

In addition to providing comments at the public meeting, public comments may be submitted to Paula Brown, ADOT Project Manager, from April 7-23 in the following ways:

**By email/phone:** Contact Paula Brown at [pbrown@azdot.gov](mailto:pbrown@azdot.gov) and 602.342.2779

**Teléfono:** Línea de Información del Proyecto ADOT: 855.712.8530

**By mail:** Paula Brown, ADOT Multimodal Planning Division, 1611 W. Jackson St., MD 310B, Phoenix, AZ 85007

The presentation and meeting exhibits will be posted to the project webpage on Friday, April 17: [azdot.gov/Osterman-Peach-Springs](https://azdot.gov/Osterman-Peach-Springs)

The Conceptual Design Report will be used to support future preservation and adaptive reuse projects and guide funding decisions. The historic gas station, which is listed on the Register of Historic Places, is located on the Hualapai Reservation in Peach Springs in Northwestern Arizona at 888 Historic Route 66.

Pursuant to Title VI of the Civil Rights Act of 1964, the Americans with Disabilities Act (ADA) and other nondiscrimination laws and authorities, ADOT does not discriminate on the basis of race, color, national origin, sex, age, or disability. Persons that require a reasonable accommodation based on language or disability should contact Paula Brown, ADOT Project Manager at 602-342-2779 or [pbrown@azdot.gov](mailto:pbrown@azdot.gov). Requests should be made as early as possible to ensure the State has an opportunity to address the accommodation.

De acuerdo con el Título VI de la Ley de Derechos Civiles de 1964, la Ley de Estadounidenses con Discapacidades (ADA por sus siglas en inglés) y otras normas y leyes antidiscriminatorias, el Departamento de Transporte de Arizona (ADOT) no discrimina por motivos de raza, color, origen nacional, sexo, edad o discapacidad. Las personas que requieran asistencia (dentro de lo razonable) ya sea por el idioma o discapacidad deben ponerse en contacto con Paula Brown en la Oficina de ADOT al 602-342-2779 o [pbrown@azdot.gov](mailto:pbrown@azdot.gov). Las solicitudes deben hacerse lo más antes posible para asegurar que el Estado tenga la oportunidad de hacer los arreglos necesarios.



## Appendix D. Public Comments

- Public comments received.

**Public Comments**

#	Comment:
1	Should the community decide on a museum, leave original gas pumps there on site. It was suggested that the original equipment, woodwork or tools that are still inside the building be included as part of a museum art display, to maintain the ties to the “automobile” industry.
2	An elder expressed that an auto repair shop is needed, with the hope that interested members of the tribe receive training to do tire repairs and oil changes. Currently, members have to drive long distances for automotive services. An auto repair shop would add to the economic growth of the community.
3	The Hualapai land is cattle country and there is a history to be told about horse riders and cattle ranching
4	The tribe is recognized for their handcrafting skills such as basket weaving, silversmithing of jewelry, sewing of traditional dresses and outfits, handsewn cloth dolls, and cradleboard making.
5	Preservation of the Hualapai language and culture is very important and promoting educational videos/recordings of the history, language, and creation story should be maintained. A museum would be a perfect place to capture those key elements of the tribe. “A museum that tells a story”.
6	The ancestors of the Hualapai people utilized plants for healing purposes and present day still have that connection to nature. The Hualapai Tribe is known as the “People of the Tall Pines”
7	Other ideas captured for reuse of the space were: a place to gather and play table games
8	Other ideas captured for reuse of the space were: a burger shop and meet up place
9	Other ideas captured for reuse of the space were: a dancehall to perform traditional dances
10	Other ideas captured for reuse of the space were: a showroom to have native comedians perform.
11	Tourists have traveled Route 66 from Chicago to Los Angeles, this stop could be a place for rest for those on a journey through the Hualapai land.
12	I would like to sign up for study updates and be added to the mailing list for the Osterman/Shell Gas Station Redevelopment Scoping Project, Peach Springs. My mailing address is 4216 Cornell Crossing, Kennesaw, Georgia 30144.
13	Please make a State Historical site, National Historic Site, and active service station (preferably run by the state). Thank You
14	Good evening, Manager Brown, If at all possible, could ADOT potentially work with the Hualapai Tribe to plant some new peach trees in the Peach Springs area? From what I understand, peaches were introduced by the Spanish friars, who passed them along to the Hopi -- and then the Navajo began cultivating them, as they continue to do today in Canyon de Chelly and other areas farther north. It would be great if at least a few such trees could again thrive in an area which owes its name to the historical presence of these hardy fruit trees...P. S. - Back in the 1950s and '60s, Arizona used special (directionally color-coded) Highway Marker Shields; perhaps for these little Historical Districts, classic replica signs could be applied -- Brown Route 66 for eastbound & Blue Route 66 signs for westbound. A company produces them and they are not expensive.
15	Has any grants been requested or offered by the state historical Route 66 or anything on a National level? Are there plans to start the renovation or complete it before the end of the Centennial year?
16	I am delighted to hear that this building is being preserved! I applaud your efforts.

17	That old gas station is so historic. We were in Williams and went to Peach Springs, because my father broke down his truck a long time ago. The people at the gas station fixed his truck as there wasn't anyone else there that could fix it. It will be great to see it preserved and getting used as a gas station again.
18	Restrooms should be built outside.
19	For veterans and service animals.
20	I want community space to be enclosed.
21	The gas station windows need to be replaced.
22	We need paths to walk on.
23	I love this idea. I really think this would benefit the Tribe and all the transit. You're doing a good job.
24	Peach Springs Visitor Center / Gift Shop Museum
25	Main service area: Peach Springs small town model in case of Peach Springs Steam Engines.
26	Reconstruct bathrooms for public use, mens and womens.
27	Get rid of the storage area. Storage is in the basement.
28	Enclosed conditioned room.
29	Gift shop / Peach Springs Museum
30	Story telling on big screen TVs on the history of Peach Springs of back in the day from Hualapai's and the non-natives that lived and owned businesses in Peach Springs.
31	Shared use - visitor center
32	Leave the cultural element out.
33	I'd like Route 66 1950 / 1960 Nostalgia with old cars and 50's style gas pumps.
34	Cars theme with Mater.
35	Suggested use: establish Hualapai Veterans Post / Visitor Center. Current Veterans have no Post and lose out on various funding opportunities because of lack of Post.
36	Restrooms - Option 2 -
37	Enclosed conditioned approach.
38	Sharing historic info on Peach Springs and Route 66 - How Route 66 impacted the Hualapai people.
39	This is a great idea!
40	Will this be run by Tribe or Grand Canyon West?
41	Will there be items sold by Hualapai or brought in to be sold?
42	Where will overflow parking be directed?
43	Will this building have fire suppression?
44	Repair areas could become an eyesore and also potential for hazardous spills.
45	The artist rendering attached is/would be a wonderful addition to Peach Springs.
46	Transit - Bus Stop
47	Museum would be the best option for the community.

48	Veterans Museum and Hall (Route 66 and Hualapai Veterans since its Hualapai Veterans Highway and building was built by veteran)
49	E-charging station
50	Information Visitor Center
51	Peach Springs Museum
52	No gas station - need to keep the area inviting.
53	Federal grant funding
54	Gift shop
55	Peach Springs Town Model in Case
56	There are a lot of businesses in Peach Springs area, interviewing business owners, not just the community members.
57	A model city of Peach Springs, to be displayed inside a glass case.
58	Trains, steam engines..
59	Hualapai has a transit system, there is a transit bus stop outside of the building.
60	Prefers not to remake building into a gas station.
61	Cultural Center is working with ASU on an expansion project; prefers the museum concept.
62	Would like Route 66, 1950 and 1960 stuff/items with old cars.
63	Have a Cars movie theme.
64	The Hualapai Veterans do not have an established Veterans Post. If they had a Post, they would apply and receive funding.
65	I am writing to share my thoughts regarding the Osterman Gas Station Redevelopment Scoping Project in Peach Springs. In my opinion, this site presents a valuable opportunity to boost visitor intake into the community by serving as a visitor center that highlights the rich history of the area. Developing the space as a visitor-oriented hub could enhance cultural awareness, provide historical context, and create a welcoming entry point for those traveling along Historic Route 66. Additionally, I believe this could be approached as an interdepartmental initiative within the Tribe. For example, our Natural Resources Department could contribute by providing insight into our work, land stewardship practices, and the various uses and significance of the surrounding landscape. This type of collaborative effort could help ensure the site reflects both the historical and the environmental importance of the area, creating a more meaningful and educational experience for visitors. Thank you for the opportunity to provide input, and please feel free to reach out if further clarification or discussion would be helpful.
66	My conversation with Ms. Nieto (Hualapai Transit Division) focused on using the space as a welcome center/museum space. The question regarding who will operate the facility, either tribal government or the Grand Canyon Resort Corporation is not just a matter of semantics. Those asking that question likely prefer the tribal government, namely the Cultural Department, operate the facility so it retains its Hualapai nature.
67	The restroom option that I support for ADOT's Osterman/Shell Gas Station Redevelopment Scoping Project, Peach Springs is Option 2 - New support building because this option will keep the existing building more intact. The approach that I support for the building use for ADOT's Osterman/Shell Gas Station Redevelopment Scoping Project, Peach Springs is the Enclosed Conditioned Approach because this option will improve the existing building along with allowing for employment opportunities for the Hualapai Tribe

68	<p>Arizona SHPO input is based on the April 16th public meeting presentation, as shared on the ADOT project website. The SHPO Architect evaluated the two interior design renderings for conformance with the Secretary of the Interior's Standards for Rehabilitation (the Standards). Though both the Enclosed Conditioned Approach and the Open Air Approach support the reuse of the building without risking the building's National Register designation, the latter is more consistent with the Standards. In particular, retaining the original interior finishes respects the industrial history of the building, aligning with Standard 2 (Retention of Historic Character) and Standard 5 (Preservation of Distinctive Features, Finishes, and Craftsmanship). The National Park Service in its Interpreting the Standards (ITS) Bulletin notes that, "the interiors of these utilitarian buildings should not be regarded as devoid of character, or as an open slate for the creation of an interior that could be found in any modern office or commercial building" (ITS Number 15; Treatment of Interiors in Industrial Buildings). Since 2022, our office has reviewed American Rescue Plan Act (ARPA)-funded structural repairs and HVAC design for the Osterman Gas Station under State Historic Preservation Act compliance and recommend continued compliance with the Standards as the redevelopment project moves forward. We recognize that the Hualapai Tribal Historic Preservation Officer is the authorized reviewer of federal undertakings on tribal land. However, we respectfully request to be a consulting party to the Section 106 review process, so that we may be able to review and comment on associated deliverables including the Conceptual Design Report.</p>
----	---