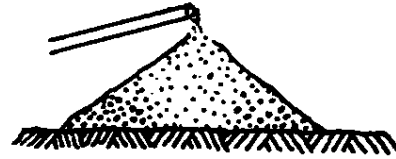


**1317 STOCKPILING AGGREGATE**



CORRECT

Methods which place material in the pile in individual units not larger than a truck load and which do not permit the aggregate to run down the slopes at the edge of the pile.

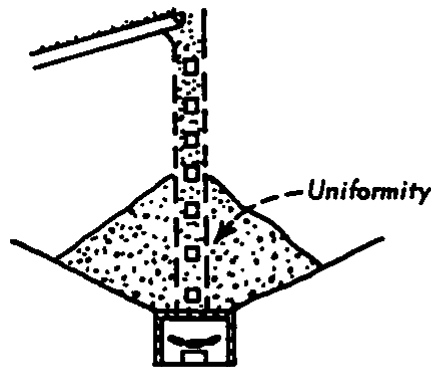


INCORRECT



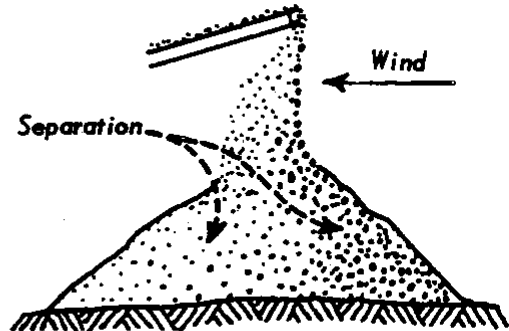
Methods which permit the aggregate to roll down the slope as it is added to the pile. The use of bulldozers is also incorrect.

UNFINISHED AGGREGATE STORAGE



CORRECT

Chimney surrounding material falling from end of conveyor belt to prevent wind from separating fine and coarse material. Openings provided as required to discharge material at various elevations of the pile.



INCORRECT

Free fall of material from high end of conveyor belt permitting wind to separate fine from coarse material.