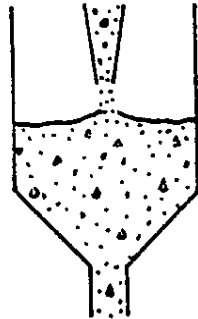


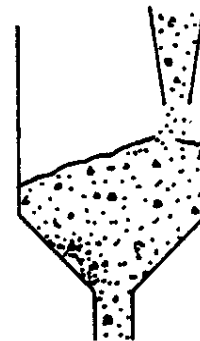
1318 LOADING HOPPERS

LOADING HOPPERS



CORRECT

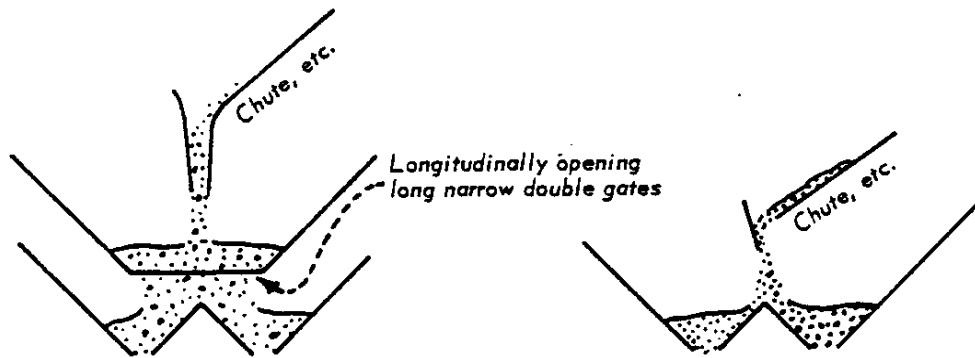
Dropping of concrete directly over gate opening.



INCORRECT

Dropping of concrete on sloping side of hopper.

DIVIDED HOPPERS



CORRECT

The above arrangement shows the only acceptable method if a divided hopper must be used. (Single discharge hoppers are to be used whenever possible.)

INCORRECT

Filling of divided hopper by flow of concrete. Separation and lack of uniformity in concrete delivered from either gate is inevitable.