

ARIZONA

MOTOR VEHICLE CRASH FACTS

2019



2019 Motor Vehicle Crash Facts for the State of Arizona

*Prepared by:
The Arizona Department of Transportation
Transportation Systems Management and Operations*

Publication Date: June 29, 2020



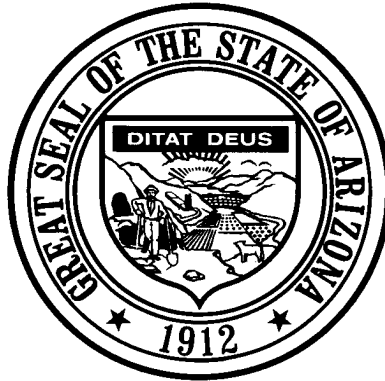
This publication is an annual statistical review of the motor vehicle crashes in the State of Arizona for the calendar year 2019. The results are compiled from Arizona Traffic Crash Reports submitted to the Arizona Department of Transportation by state, county, city, tribal, and other law enforcement agencies. Specific inquiries regarding the data in this report should be directed to:

**The Arizona Department of Transportation
Transportation Systems Management and Operations
Traffic Safety Section
1615 West Jackson Street
Phoenix, AZ 85007**

E-mail: azcrashfacts@azdot.gov

In order to provide the most current information, preliminary data is utilized when necessary. For this reason, previous or future reports may differ slightly and we encourage you to refer to the latest issue of Motor Vehicle Crash Facts.

This issue as well as previous issues of this publication may be viewed and downloaded from the ADOT Web Site:
www.azdot.gov/crashfacts



Douglas A. Ducey
Governor

Arizona Department of Transportation

John S. Halikowski
Director

State Transportation Board

Michael S. Hammond – District 2
Chairman

Steve Stratton – District 4
Vice Chairman

Members

Sam Elters – District 1
Jenn Daniels – District 1
Richard Searle – District 3
Jesse Thompson – District 5
Gary Knight – District 6

OVERVIEW

Section 1: – Highlights and Historical Trends 1

Section 2: – Geographic Location..... 9

Section 3: – Crash Descriptions 17

Section 4: – Safety Devices 23

Section 5: – Motor Vehicle and Driver Descriptions 26

Section 6: – Alcohol Related Crashes..... 33

Section 7: – Pedestrian and Pedalcyclist Crashes 42

Section 8: – Motorcycle (MC) Crashes 48

Acknowledgements 58

2019 Arizona Crash Facts Summary

Table of Contents

Section 1: Highlights and Historical Trends	1
Arizona Crash Facts Summary and Comparison.....	2
Arizona at a Glance – 2019.....	2
Licensed Drivers, Motor Vehicle Registration and Crash History in Arizona.....	3
Historical Trends – VMT and Rates.....	3
Statewide Economic Loss Due to Motor Vehicle Crashes.....	4
State Adjusted Crash Costs.....	4
Traffic Crashes in Arizona by Year.....	5
Victims of Motor Vehicle Crashes.....	6
Suspected Serious Injuries by Person Type 2015-2019.....	6
Young Drivers (age 15-24) killed in crashes 2015-2019.....	6
State Highway System (SHS) vs Local Road Fatalities.....	7
Arizona Fatality Rate vs. Injury Rate.....	7
Traffic Fatalities by Geographic Region.....	7
Traffic Injuries by Geographic Region.....	7
Holiday Crash Statistics.....	8
Section 2: Geographic Location	9
Crash Severity by First Harmful Event Statewide.....	10
Crashes by County.....	10
Crash Severity by First Harmful Event in Urban Areas.....	11
Crash Severity by First Harmful Event in Rural Areas.....	11
Analysis by Jurisdiction.....	12
Total Fatalities by County for 2018 and 2019.....	15
Urban and Rural Crashes by Day of Week.....	16
Urban and Rural Fatal Crashes by Day of Week.....	16
All Urban and Rural Crashes vs. Urban and Rural Fatal Crashes by Month.....	16
Section 3: Crash Descriptions	17
Manner of Collision in Multi-Vehicle Crashes.....	18
Lighting Conditions.....	18
Weather Conditions.....	18
Road Surface Conditions.....	19
Roadway Grade.....	19
Roadway Alignment.....	19
All Crashes vs. Fatal Crashes by Time of Day - Weekdays.....	20
All Crashes vs. Fatal Crashes by Time of Day - Weekends.....	20
Crashes by Day of Week.....	21
Fatal Crashes by Day of Week.....	21
All Crashes vs. Fatal Crashes by Month.....	21
Crashes by Hour and Day of Week.....	22
Section 4: Safety Devices	23
Child Safety Device Usage (less than five years old).....	24
Driver Safety Device Usage.....	24
Passenger Safety Device Usage.....	24
Driver Safety Device Usage by Gender.....	25
Driver Safety Device Usage by Age.....	25
Section 5: Motor Vehicle and Driver Descriptions	26
Arizona Motor Vehicle Registrations.....	27
Motor Vehicle Crash Involvement by Vehicle Type.....	27
Hit and Run Drivers Involved in Crashes.....	28

2019 Arizona Crash Facts Summary

Gender of Drivers Involved in Crashes.....	28
License Status of Drivers Involved in Crashes.....	28
Passengers Killed and Injured by Age and Gender.....	28
Drivers and Passengers Killed and Injured by Vehicle Type.....	29
Drivers Killed and Injured by Age and Gender.....	29
Licensed Drivers in Arizona by Age.....	30
Driver Involvement by Age.....	30
Driver Violations.....	31
Driver Physical Condition.....	31
Distracted Driving Behavior.....	32
Secondary Crashes.....	32
Section 6: Alcohol Related Crashes.....	33
Economic Loss Due to Alcohol Related Crashes in Arizona for 2019.....	34
Alcohol Related Crash History.....	34
Manner of Collision in Alcohol Related Crashes.....	34
Alcohol Related Crashes by First Harmful Event.....	35
Alcohol Related Crashes by Vehicle Type.....	35
Lighting Conditions in Alcohol Related Crashes.....	36
Road Surface Conditions in Alcohol Related Crashes.....	36
Gender of Drivers Involved in Alcohol Related Crashes.....	36
Driver Involvement by Age in Alcohol Related Crashes.....	37
When Alcohol Related Crashes Occurred in 2019.....	37
Safety Device Usage for Drinking Drivers.....	37
Persons Killed and Injured in Alcohol Related Crashes.....	38
Alcohol Related Crashes by County.....	38
All Alcohol Related Crashes vs. Fatal Alcohol Related Crashes by Day of Week.....	39
All Alcohol Related Crashes vs. Fatal Alcohol Related Crashes by Month.....	39
All Alcohol Related Crashes vs. Fatal Alcohol Related Crashes - Weekdays.....	40
All Alcohol Related Crashes vs. Fatal Alcohol Related Crashes - Weekends.....	40
Alcohol Related Crashes by Hour and Day of Week.....	41
Section 7: Pedestrian and Pedalcyclist Crashes.....	42
Pedestrians Killed and Injured By Age and Gender.....	43
Pedestrian Crashes by Geographic Location.....	43
Pedestrian Crash History.....	43
Pedestrians Killed by Age and Action.....	44
Pedestrians Injured by Age and Action.....	44
Pedestrian Physical Condition in Motor Vehicle Crashes.....	44
Lighting Conditions in Pedestrian Crashes.....	45
Weather Conditions in Pedestrian Crashes.....	45
Pedalcyclists Killed and Injured by Age and Gender.....	45
Pedalcycle Crashes by Geographic Location.....	46
Pedalcycle Crash History.....	46
Lighting Conditions in Pedalcyclist Crashes.....	46
Weather Conditions in Pedalcyclist Crashes.....	46
Pedestrian Crashes by County.....	47
Pedalcyclist Crashes by County.....	47
Section 8: Motorcycle (MC) Crashes.....	48
MC Fatalities by Year.....	49
MC Registrations in Arizona.....	49
Fatality Rate per Registered MC.....	49
Percent of MC Crashes to All Crashes.....	49
MC Crashes by First Harmful Event.....	50
Lighting Conditions in MC Crashes.....	50
Road Surface Conditions in MC Crashes.....	50
MC Crashes by Geographic Location.....	51

2019 Arizona Crash Facts Summary

Operator Involvement by Age in MC Crashes.....	51
MC Operator Physical Condition.....	51
Helmet Use by Gender.....	52
MC Operator’s Helmet Use.....	52
MC Passenger’s Helmet Use.....	52
MC Operators and Passengers Killed and Injured.....	53
MC Operator Violations.....	53
All MC Crashes vs. Fatal MC Crashes by Time of Day - Weekdays.....	54
All MC Crashes vs. Fatal MC Crashes by Time of Day - Weekends.....	54
All MC Crashes vs. Fatal MC Crashes by Day of Week.....	55
Alcohol Related MC Crashes vs. Fatal Alcohol Related MC Crashes by Day of Week.....	55
MC Crashes by Hour and Day of Week.....	56
MC Crashes by County.....	57
Manner of Collision in MC Crashes.....	57
Acknowledgements.....	58

2019 Arizona Crash Facts Summary

BREAKDOWN OF ALL CRASHES IN ARIZONA

TOTAL	129,750
FATAL	911
INJURY	36,926
PROPERTY DAMAGE ONLY	91,913
URBAN	114,457
RURAL	15,293
ALCOHOL RELATED	4,907
PEDESTRIAN	1,842
PEDALCYCLE	1,275
MOTORCYCLE	2,676
SINGLE VEHICLE	18,660
MULTI-VEHICLE	111,090

BREAKDOWN OF FATAL CRASHES IN ARIZONA

TOTAL	911
ALCOHOL RELATED	234
URBAN	556
RURAL	355
SINGLE VEHICLE	321
MULTI-VEHICLE	590
ALCOHOL RELATED SINGLE VEHICLE	96
ALCOHOL RELATED MULTI-VEHICLE	138

BREAKDOWN OF PERSONS KILLED AND INJURED

TYPE	KILLED	INJURED
IN ALL CRASHES	982	53,809
IN ALCOHOL RELATED CRASHES	256	2,969
IN URBAN CRASHES	586	46,858
IN RURAL CRASHES	396	6,951
IN SPEED RELATED CRASHES *	294	20,571
IN LANE DEPARTURE CRASHES	619	14,716
IN CRASHES ON THE STATE HIGHWAY SYSTEM	372	17,110
IN CRASHES ON LOCAL ROADS	610	36,699
USING SAFETY DEVICE	282	44,371
NOT USING SAFETY DEVICE	300	2,931
DRIVERS AGE 24 OR YOUNGER	82	8,024
DRINKING DRIVERS AGE 24 OR YOUNGER	15	309

BREAKDOWN OF CRASHES BY TIME

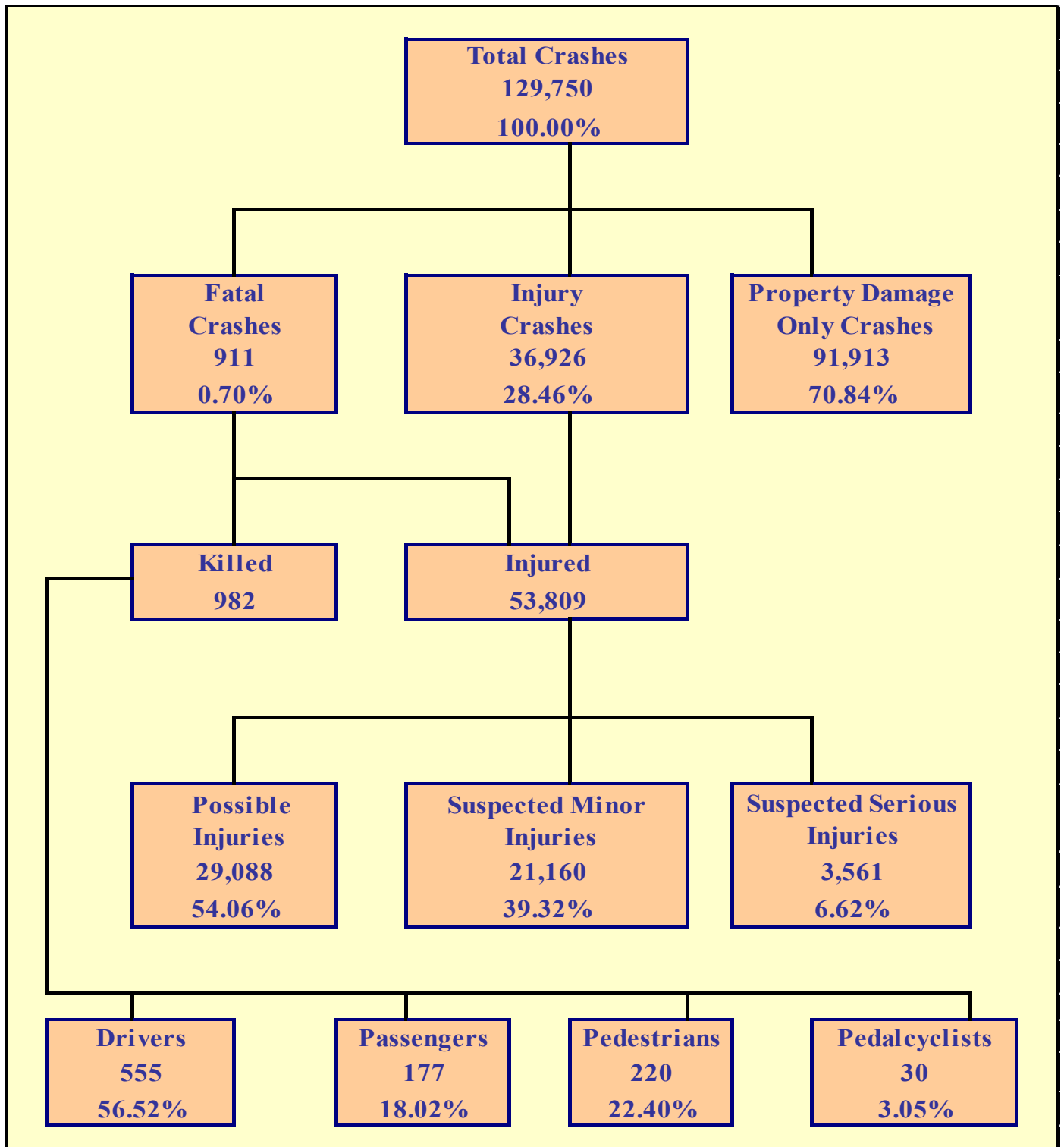
PEAK MONTH FOR ALL CRASHES	OCTOBER
PEAK DAY FOR ALL CRASHES	FRIDAY
PEAK HOUR FOR ALL CRASHES	4 PM - 5 PM
PEAK MONTH FOR FATAL CRASHES	APRIL
PEAK DAY FOR FATAL CRASHES	SATURDAY
PEAK HOUR FOR FATAL CRASHES	7 PM - 8 PM
PEAK DATE FOR ALL CRASHES IN 2019	THURSDAY FEBRUARY 14TH (635 CRASHES)
PEAK DATE FOR FATAL CRASHES IN 2019	FRIDAY OCTOBER 4TH (8 CRASHES)
PEAK HOUR FOR MOTORCYCLE CRASHES	5 PM - 6 PM
PEAK HOUR FOR ALCOHOL RELATED CRASHES	2 AM - 3 AM
PEAK HOUR FOR PEDESTRIAN CRASHES	6 PM - 7 PM
PEAK HOUR FOR PEDALCYCLE CRASHES	3 PM - 4 PM

*Note: These numbers represent the total number of fatalities and injuries in crashes where the violation "speed too fast for conditions" or "exceeded lawful speed" was marked on the crash report.

2019 Arizona Crash Facts Summary

Fatalities in Arizona since 1925

Year	Total Fatalities	Year	Total Fatalities
1925	76	1972	812
1926	120	1973	975
1927	147	1974	751
1928	130	1975	670
1929	157	1976	739
1930	190	1977	933
1931	159	1978	1,027
1932	166	1979	1,029
1933	154	1980	947
1934	205	1981	916
1935	217	1982	724
1936	244	1983	675
1937	258	1984	869
1938	200	1985	893
1939	215	1986	1,007
1940	228	1987	939
1941	272	1988	944
1942	230	1989	879
1943	168	1990	869
1944	180	1991	816
1945	283	1992	811
1946	236	1993	799
1947	256	1994	904
1948	301	1995	1,035
1949	281	1996	997
1950	325	1997	950
1951	415	1998	981
1952	396	1999	1,028
1953	397	2000	1,037
1954	402	2001	1,057
1955	358	2002	1,132
1956	486	2003	1,125
1957	461	2004	1,159
1958	509	2005	1,193
1959	517	2006	1,301
1960	513	2007	1,071
1961	510	2008	938
1962	510	2009	806
1963	513	2010	759
1964	588	2011	827
1965	550	2012	821
1966	643	2013	849
1967	574	2014	774
1968	695	2015	897
1969	750	2016	952
1970	762	2017	998
1971	755	2018	1,011
		2019	982



Section 1: – Highlights and Historical Trends

Table 1 – 1

Arizona Crash Facts Summary and Comparison

Category	2018	2019	Percent Change
Total Crashes	127,712	129,750	1.60%
Total Fatalities	1,011	982	-2.87%
Total Injuries	53,644	53,809	0.31%
Alcohol Related Fatalities	265	256	-3.40%
Alcohol Related Injuries	3,001	2,969	-1.07%
Urban Fatalities	658	586	-10.94%
Urban Injuries	47,972	46,858	-2.32%
Rural Fatalities	353	396	12.18%
Rural Injuries	5,672	6,951	22.55%
MC Operator and Passenger Fatalities	154	170	10.39%
MC Operator and Passenger Injuries	2,255	2,235	-0.89%
Pedestrians Fatalities	245	220	-10.20%
Pedestrians Injuries	1,546	1,697	9.77%
Pedalcyclist Fatalities	24	30	25.00%
Pedalcyclist Injuries	1,190	1,259	5.80%
Millions of vehicle miles traveled (VMT)	66,145	70,281	6.25%
Fatalities per 100 million VMT	1.53	1.40	-8.58%
Injuries per 100 million VMT	81.10	76.56	-5.60%

Arizona at a Glance – 2019

- Approximately **2.69** persons were killed each day.
- One person was killed every **8** hours and **56** minutes.
- There were **147** persons injured every day.
- One person was injured every **9** minutes and **46** seconds.
- Alcohol Related crashes accounted for **3.78%** of all crashes and **25.69%** of all fatal crashes.
- Of all alcohol related crashes, **84.63%** occurred in Urban areas and **15.37%** occurred in Rural areas, while **62.39%** of all alcohol related fatal crashes occurred in Urban areas and **37.61%** occurred in Rural areas.
- Single vehicle crashes accounted for **14.38%** of all crashes and **35.24%** of all fatal crashes.
- Of all Pedestrian crashes, **11.78%** were fatal while **2.35%** of Pedalcycle crashes were fatal.
- Crashes which occurred during daylight hours (6:00 a.m. to 6:00 p.m.) accounted for **72.3%** of all crashes.
- Motor vehicle crashes resulted in **\$18.442** billion in economic losses to Arizona.
- Children age 14 and younger accounted for **32** fatalities and **3,182** injuries in motor vehicle crashes.

Section 1: – Highlights and Historical Trends

Table 1 – 2
Licensed Drivers, Motor Vehicle Registration
and Crash History in Arizona

Calendar Year	Total Crashes	Fatal Crashes	Injury Crashes	Property Damage Only Crashes	Total Persons Killed	Total Persons Injured	Total Licensed Drivers	Total Registered Vehicles
2005	140,574	1,049	45,826	93,699	1,193	71,083	3,963,005	4,556,448
2006	143,504	1,126	45,395	96,983	1,301	70,013	4,091,789	4,748,957
2007	141,193	952	43,560	96,681	1,071	66,062	4,212,393	4,848,162
2008	120,557	843	37,515	82,199	938	56,539	4,360,711	4,842,188
2009	107,149	709	33,506	72,934	806	50,809	4,434,719	4,787,350
2010	106,900	695	33,419	72,786	759	50,463	4,537,653	4,805,904
2011	103,958	756	33,223	69,979	827	49,856	4,634,405	4,855,014
2012	103,940	738	33,595	69,607	821	50,089	4,736,517	4,969,620
2013	107,576	782	34,137	72,657	849	50,440	4,826,903	5,130,780
2014	109,872	709	34,578	74,585	774	51,103	4,922,676	5,300,980
2015	117,053	811	36,304	79,938	897	53,854	5,025,811	5,487,058
2016	127,281	856	38,712	87,713	952	56,938	5,135,262	5,677,208
2017	127,810	917	38,055	88,838	998	55,886	5,221,403	5,843,368
2018	127,712	918	36,687	90,107	1,011	53,644	5,308,307	6,009,850
2019	129,750	911	36,926	91,913	982	53,809	5,375,341	6,167,481

Table 1 – 3
Historical Trends – VMT and Rates

Calendar Year	Arizona Fatality Rate	Arizona Injury Rate	Arizona Traffic Fatalities	Estimated Motor Vehicle Miles Traveled	Arizona Fatal Crash Rate
2015	1.38	82.79	897	65,045	1.25
2016	1.45	86.79	952	65,606	1.30
2017	1.53	85.89	998	65,069	1.41
2018	1.53	81.10	1,011	66,145	1.39
2019	1.40	76.56	982	70,281	1.30

Vehicle miles traveled are shown in million miles and rates per 100 million miles

Section 1: – Highlights and Historical Trends

Statewide Economic Loss Due to Motor Vehicle Crashes

Fatalities	\$9,344,094,322
Suspected Serious Injuries	\$1,960,326,939
Suspected Minor Injuries	\$3,155,633,120
Possible Injuries	\$3,000,281,760
Property Damage Only	\$981,630,840
TOTAL	\$18,441,966,981

Table 1 – 4

Estimated Economic Loss by County

County	Cost of Traffic Crashes			
	Fatalities	Injuries	PDO	Total
Apache	\$ 323,522,614	\$ 36,022,573	\$ 2,969,040	\$ 362,514,227
Cochise	\$ 237,884,275	\$ 68,552,908	\$ 8,309,040	\$ 314,746,223
Coconino	\$ 504,314,663	\$ 238,109,810	\$ 29,743,800	\$ 772,168,273
Gila	\$ 171,276,678	\$ 78,751,589	\$ 7,230,360	\$ 257,258,627
Graham	\$ 66,607,597	\$ 30,033,858	\$ 2,883,600	\$ 99,525,055
Greenlee	\$ 28,546,113	\$ 6,674,653	\$ 587,400	\$ 35,808,166
La Paz	\$ 161,761,307	\$ 31,629,458	\$ 2,798,160	\$ 196,188,925
Maricopa	\$ 4,243,855,466	\$ 5,568,940,155	\$ 748,603,920	\$ 10,561,399,541
Mohave	\$ 542,376,147	\$ 260,555,591	\$ 23,795,040	\$ 826,726,778
Navajo	\$ 228,368,904	\$ 95,502,158	\$ 9,505,200	\$ 333,376,262
Pima	\$ 1,341,667,311	\$ 840,055,373	\$ 63,321,720	\$ 2,245,044,404
Pinal	\$ 656,560,599	\$ 340,444,781	\$ 31,975,920	\$ 1,028,981,300
Santa Cruz	\$ 57,092,226	\$ 19,483,202	\$ 3,599,160	\$ 80,174,588
Yavapai	\$ 513,830,034	\$ 288,282,794	\$ 28,152,480	\$ 830,265,308
Yuma	\$ 266,430,388	\$ 213,202,916	\$ 18,156,000	\$ 497,789,304
TOTALS	\$ 9,344,094,322	\$ 8,116,241,819	\$ 981,630,840	\$ 18,441,966,981

Table 1 – 5

State Adjusted Crash Costs

1.	Fatality	\$9,515,371
2.	Suspected Serious Injury	\$550,499
3.	Suspected Minor Injury	\$149,132
4.	Possible Injury	\$103,145
5.	Property Damage Only	\$10,680

Source: www.safety.fhwa.dot.gov/hsip/docs/fhwasa17071.pdf

Section 1: – Highlights and Historical Trends

Traffic Crashes in Arizona by Year

Chart 1 – 1
Total Crashes

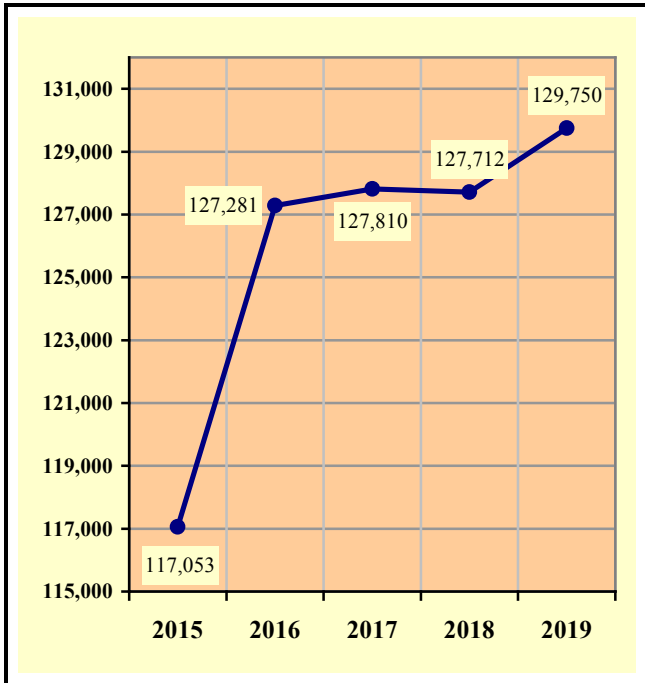


Chart 1 – 2
Fatal Crashes

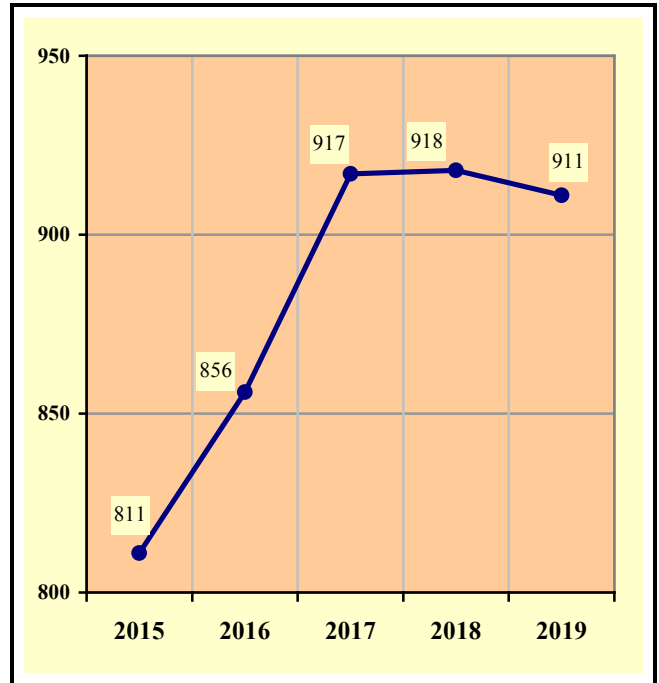


Chart 1 – 3
Injury Crashes

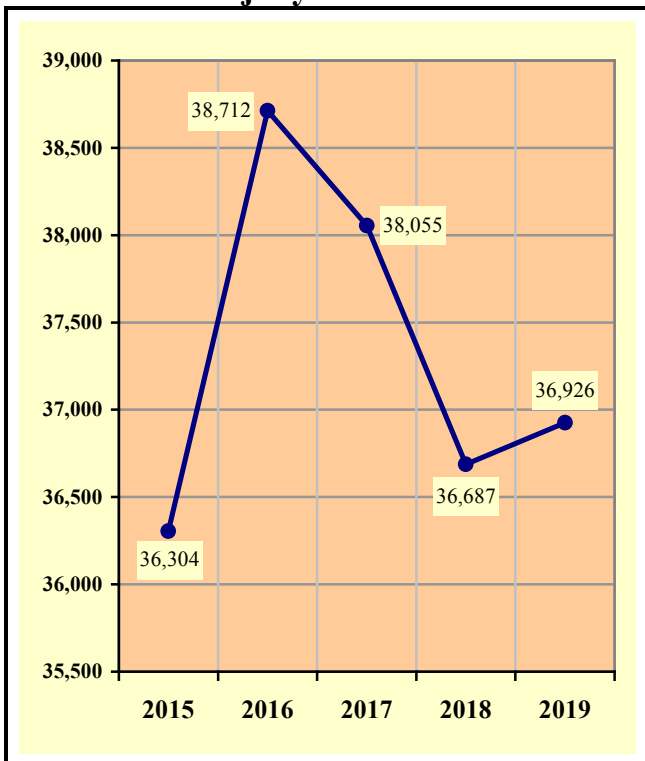
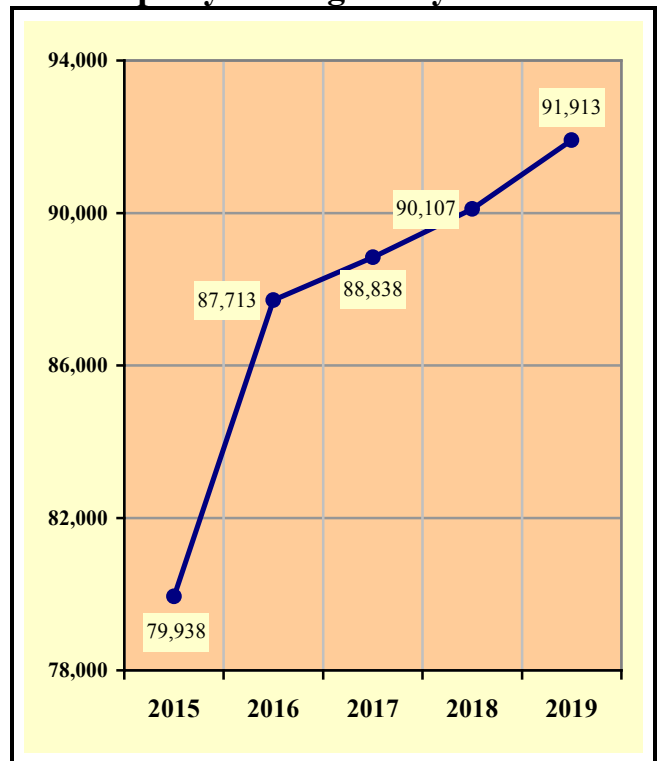


Chart 1 – 4
Property Damage Only Crashes



Section 1: – Highlights and Historical Trends

Table 1 – 6

Victims of Motor Vehicle Crashes

Age of Victim	Persons Killed				Persons Injured			
	Total	Male	Female	Gender Unknown	Total	Male	Female	Gender Unknown
0-4	8	4	4	0	752	380	372	0
5-9	8	4	4	0	1,044	526	518	0
10-14	16	11	5	0	1,386	666	720	0
15-19	65	38	27	0	5,214	2,467	2,747	0
20-24	90	69	21	0	6,639	3,252	3,387	0
25-34	153	111	42	0	11,092	5,373	5,719	0
35-44	147	109	38	0	7,888	3,844	4,044	0
45-54	129	85	44	0	6,983	3,356	3,627	0
55-64	153	109	44	0	6,106	3,016	3,090	0
65-74	108	84	24	0	3,860	1,811	2,049	0
75 & Older	101	65	36	0	2,271	1,082	1,189	0
Unknown	4	2	1	1	574	244	246	84
TOTAL	982	691	290	1	53,809	26,017	27,708	84

Table 1 – 7

Suspected Serious Injuries by Person Type 2015-2019

Year	Drivers	Passengers	Pedestrians	Pedalcyclists	Total
2015	2,777	950	303	183	4,213
2016	2,911	1,053	426	218	4,608
2017	2,643	985	388	181	4,197
2018	2,430	792	385	173	3,780
2019	2,276	778	356	151	3,561
TOTAL	13,037	4,558	1,858	906	20,359

Table 1 – 8

Young drivers (age 15-24) killed in crashes 2015-2019

Year	Age of Driver										Total
	15	16	17	18	19	20	21	22	23	24	
2015	1	2	4	7	7	13	15	15	10	10	84
2016	2	2	1	13	12	11	9	18	15	14	97
2017	1	0	2	8	9	10	14	18	10	10	82
2018	1	2	4	13	6	12	10	13	12	14	87
2019	0	6	4	9	9	10	13	12	9	9	81
TOTAL	5	12	15	50	43	56	61	76	56	57	431

Section 1: – Highlights and Historical Trends

Chart 1 – 5

State Highway System (SHS) vs Local Road Fatalities

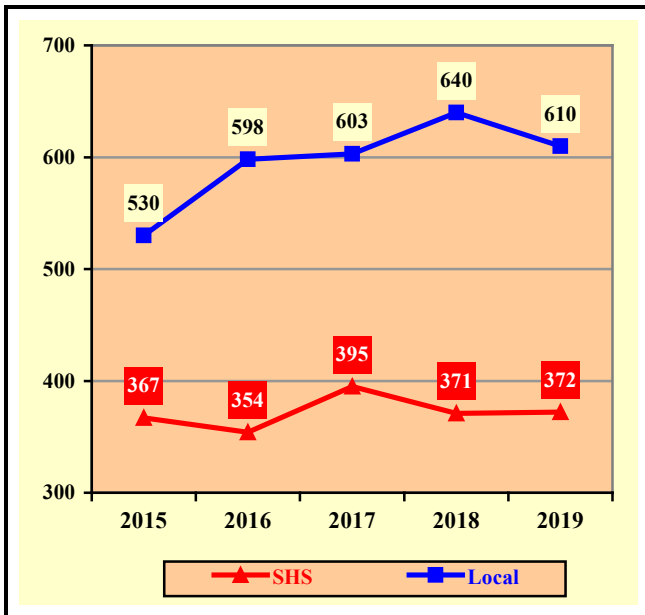


Chart 1 – 6

Arizona Fatality Rate vs. Injury Rate



Chart 1 – 7

Traffic Fatalities by Geographic Region

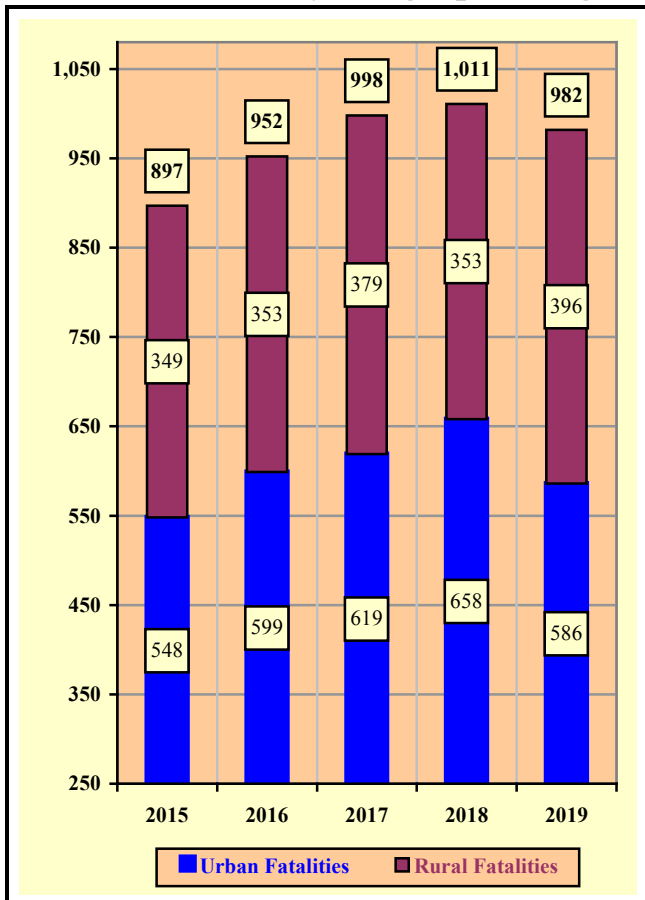
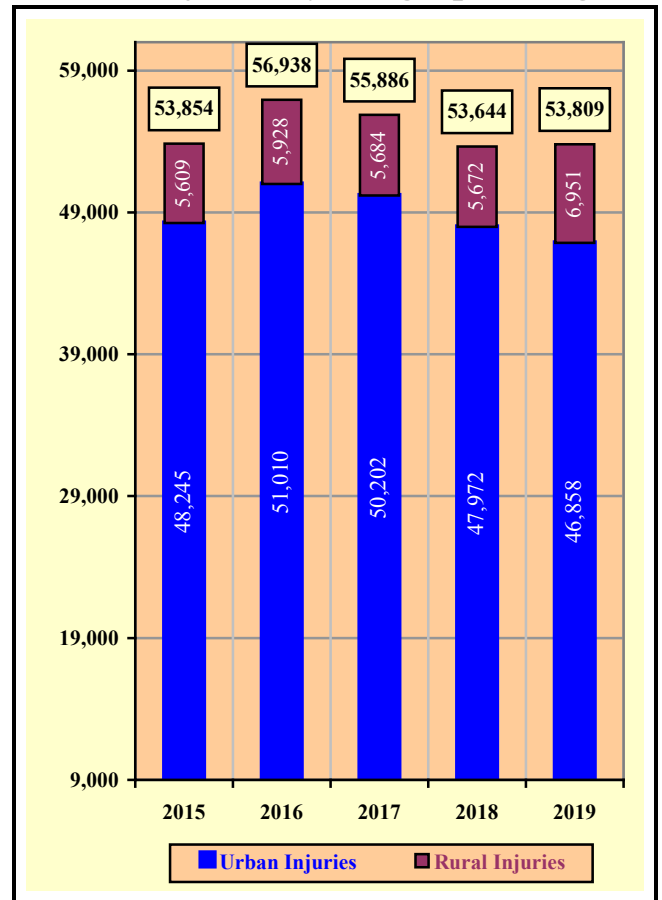


Chart 1 – 8

Traffic Injuries by Geographic Region



Note: The data in charts 1-7 and 1-8 will differ from previous crash facts due to a change in the criteria used to determine urban and rural.

Section 1: – Highlights and Historical Trends

Table 1 – 9

Holiday Crash Statistics

Holidays such as Memorial Day, Labor Day, and Thanksgiving are regarded as three or four day weekend holidays for statistical purposes. Holidays such as Christmas, New Year’s Day, and the Fourth of July are celebrated on specific dates; which make the holiday period range from two to five days in length.

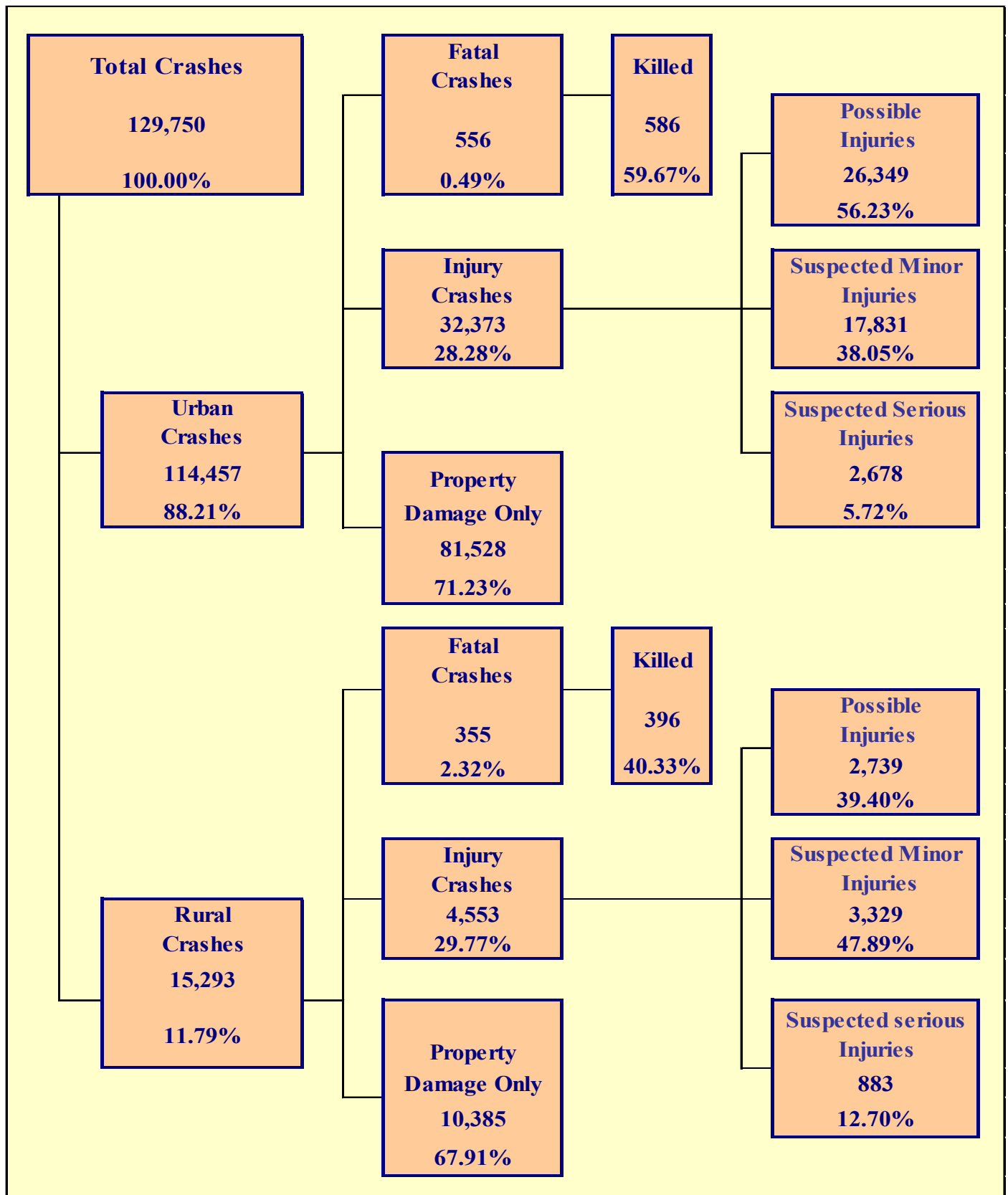
Holiday fatality statistics are based on fatal crashes occurring from 6:00 p.m. on the last working day prior to the holiday through 5:59 a.m. the day following the holiday period. Example: Thanksgiving fatalities are counted from Wednesday evening at 6:00 p.m. through 5:59 a.m. of the following Monday.

2019 Holidays	Beginning at 6:00 p.m.	Ending at 5:59 a.m.	Number of Days	Fatal Crashes	Persons Killed	Alcohol Related Fatal Crashes	Alcohol Related Fatalities
New Year’s Day	Friday 12/28/2018	Wednesday 1/2/2019	5	8	9	1	1
	Friday 5/24/2019	Tuesday 5/28/2019					
Memorial Day	Friday 5/24/2019	Tuesday 5/28/2019	4	13	13	1	1
	Friday 8/30/2019	Tuesday 9/3/2019					
July 4th	Wednesday 7/3/2019	Monday 7/8/2019	5	13	14	5	6
	Friday 8/30/2019	Tuesday 9/3/2019					
Labor Day	Friday 8/30/2019	Tuesday 9/3/2019	4	12	12	4	4
	Wednesday 11/27/2019	Monday 12/2/2019					
Thanksgiving Day	Wednesday 11/27/2019	Monday 12/2/2019	5	11	11	3	3
	Tuesday 12/24/2019	Thursday 12/26/2019					
Christmas Day	Tuesday 12/24/2019	Thursday 12/26/2019	2	2	2	0	0

Fatal Crashes by Year	New Year’s Day	Memorial Day	July 4th	Labor Day	Thanksgiving	Christmas Day	Total
2015	7	10	11	10	10	4	52
2016	6	7	13	7	11	4	48
2017	12	5	4	9	16	10	56
2018	10	7	5	8	8	10	48
2019	8	13	13	12	11	2	59

Persons Killed	New Year’s Day	Memorial Day	July 4th	Labor Day	Thanksgiving	Christmas Day	Total
2015	7	11	11	10	16	6	61
2016	6	7	15	8	11	6	53
2017	13	7	4	9	17	10	60
2018	10	8	5	9	8	11	51
2019	9	13	14	12	11	2	61

Number of Days	New Year’s Day	Memorial Day	July 4th	Labor Day	Thanksgiving	Christmas Day	Total
2015	5	4	4	4	5	4	26
2016	4	4	4	4	5	4	25
2017	4	4	2	4	5	4	23
2018	4	4	2	4	5	5	24
2019	5	4	5	4	5	2	25



Section 2: – Geographic Location

Fatal Crashes in Arizona (911) accounted for 0.70% of all crashes, Injury Crashes (36,926) accounted for 28.46%, and Property Damage Only (PDO) Crashes (91,913) accounted for 70.84%.

**Table 2 – 1
Crash Severity by First Harmful Event Statewide**

First Harmful Event Type	Number of Crashes				Number of Persons	
	Total	Fatal	Injury	PDO	Killed	Injured
Collision with Motor Vehicle in Transport	100,150	324	27,498	72,328	373	42,422
Overtuning	2,535	121	1,576	838	130	2,129
Collision with Pedestrian	1,733	210	1,523	0	213	1,621
Collision with Pedalcyclist	1,242	30	1,212	0	31	1,258
Collision with Animal	2,007	3	193	1,811	4	264
Collision with Fixed Object	12,409	171	3,451	8,787	179	4,141
Collision with Non-fixed Object*	5,990	17	638	5,335	17	781
Vehicle Fire or Explosion	336	1	13	322	1	14
Other Non-collision**	443	13	38	392	13	49
Unknown	2,905	21	784	2,100	21	1,130
TOTAL	129,750	911	36,926	91,913	982	53,809
*Includes Collision with Parked Vehicles, Trains, Railway Vehicles, and Work Zone Equipment						
**Includes Vehicle Immersion, Jackknife, and Cargo Loss or Shift						

**Table 2 – 2
Crashes by County**

County	Number of Crashes				Number of Persons	
	Total	Fatal	Injury	PDO	Killed	Injured
Apache	421	27	116	278	34	191
Cochise	1,072	24	270	778	25	386
Coconino	3,740	46	909	2,785	53	1,465
Gila	992	17	298	677	18	397
Graham	383	7	106	270	7	168
Greenlee	85	3	27	55	3	38
La Paz	377	13	102	262	17	163
Maricopa	97,105	428	26,583	70,094	446	38,571
Mohave	3,203	51	924	2,228	57	1,387
Navajo	1,250	24	336	890	24	520
Pima	9,850	129	3,792	5,929	141	5,449
Pinal	4,357	60	1,303	2,994	69	1,969
Santa Cruz	423	6	80	337	6	109
Yavapai	3,813	50	1,127	2,636	54	1,636
Yuma	2,679	26	953	1,700	28	1,360
TOTAL	129,750	911	36,926	91,913	982	53,809

Section 2: – Geographic Location

**Table 2 – 3
Crash Severity by First Harmful Event in Urban Areas**

First Harmful Event Type	Number of Crashes				Number of Persons	
	Total	Fatal	Injury	PDO	Killed	Injured
Collision with Motor Vehicle in Transport	92,938	215	25,295	67,428	234	38,597
Overturning	890	23	628	239	25	785
Collision with Pedestrian	1,664	178	1,486	0	181	1,579
Collision with Pedalcyclist	1,178	25	1,153	0	26	1,196
Collision with Animal	358	0	25	333	0	38
Collision with Fixed Object	9,135	87	2,492	6,556	92	2,922
Collision with Non-fixed Object*	4,967	10	486	4,471	10	583
Vehicle Fire or Explosion	118	1	1	116	1	1
Other Non-collision**	321	10	24	287	10	29
Unknown	2,888	7	783	2,098	7	1,128
TOTAL	114,457	556	32,373	81,528	586	46,858
*Includes Collision with Parked Vehicles, Trains, Railway Vehicles, and Work Zone Equipment						
**Includes Vehicle Immersion, Jackknife, and Cargo Loss or Shift						

**Table 2 – 4
Crash Severity by First Harmful Event in Rural Areas**

First Harmful Event Type	Number of Crashes				Number of Persons	
	Total	Fatal	Injury	PDO	Killed	Injured
Collision with Motor Vehicle in Transport	7,212	109	2,203	4,900	139	3,825
Overturning	1,645	98	948	599	105	1,344
Collision with Pedestrian	69	32	37	0	32	42
Collision with Pedalcyclist	64	5	59	0	5	62
Collision with Animal	1,649	3	168	1,478	4	226
Collision with Fixed Object	3,274	84	959	2,231	87	1,219
Collision with Non-fixed Object*	1,023	7	152	864	7	198
Vehicle Fire or Explosion	218	0	12	206	0	13
Other Non-collision**	122	3	14	105	3	20
Unknown	17	14	1	2	14	2
TOTAL	15,293	355	4,553	10,385	396	6,951
*Includes Collision with Parked Vehicles, Trains, Railway Vehicles, and Work Zone Equipment						
**Includes Vehicle Immersion, Jackknife, and Cargo Loss or Shift						

While Urban Crashes in Arizona (114,457) accounted for 88.21% of all crashes, they accounted for 61.03% of all Fatal Crashes (556) occurring in 2019.

While Rural Crashes in Arizona (15,293) accounted for 11.79% of all crashes, they accounted for 38.97% of all Fatal Crashes (355) occurring in 2019.

Section 2: – Geographic Location

Table 2 – 5
Analysis by Jurisdiction

COUNTIES Cities	Number of Crashes				No. of Persons		Alcohol Related		
	Total	Fatal	Injury	PDO	Killed	Injured	Crashes	Killed	Injured
Apache County	389	26	107	256	32	178	25	12	23
Eagar	20	0	4	16	0	5	2	0	0
Springerville	4	0	3	1	0	4	0	0	0
St. Johns	8	1	2	5	2	4	1	0	0
TOTAL	421	27	116	278	34	191	28	12	23

Cochise County	449	15	107	327	15	160	24	6	15
Benson	91	3	14	74	3	25	2	1	0
Bisbee	3	0	0	3	0	0	0	0	0
Douglas	2	0	0	2	0	0	0	0	0
Huachuca City	2	1	0	1	1	0	1	1	0
Sierra Vista	491	4	143	344	5	194	18	0	7
Tombstone	7	0	3	4	0	3	1	0	0
Willcox	27	1	3	23	1	4	2	0	0
TOTAL	1,072	24	270	778	25	386	48	8	22

Coconino County	1,554	32	374	1,148	38	598	70	12	62
Flagstaff	1,815	10	474	1,331	10	743	80	3	49
Fredonia	0	0	0	0	0	0	0	0	0
Williams	138	2	13	123	3	24	5	1	1
Page	129	1	38	90	1	85	14	0	10
Sedona	104	1	10	93	1	15	3	0	1
TOTAL	3,740	46	909	2,785	53	1,465	172	16	123

Gila County	580	14	171	395	15	223	22	2	19
Globe	164	3	49	112	3	74	9	0	6
Hayden	1	0	1	0	0	2	0	0	0
Miami	29	0	7	22	0	9	1	0	1
Payson	218	0	70	148	0	89	14	0	13
Winkelman	0	0	0	0	0	0	0	0	0
TOTAL	992	17	298	677	18	397	46	2	39

Graham County	137	5	39	93	5	69	19	2	8
Pima	0	0	0	0	0	0	0	0	0
Safford	172	2	46	124	2	68	8	0	3
Thatcher	74	0	21	53	0	31	1	0	0
TOTAL	383	7	106	270	7	168	28	2	11

Greenlee County	56	3	21	32	3	28	6	1	3
Clifton	26	0	5	21	0	8	2	0	1
Duncan	3	0	1	2	0	2	0	0	0
TOTAL	85	3	27	55	3	38	8	1	4

Section 2: – Geographic Location

Table 2 – 5
Analysis by Jurisdiction

COUNTIES Cities	Number of Crashes				No. of Persons		Alcohol Related		
	Total	Fatal	Injury	PDO	Killed	Injured	Crashes	Killed	Injured
La Paz County	313	13	86	214	17	142	20	1	20
Parker	24	0	4	20	0	6	1	0	0
Quartzite	40	0	12	28	0	15	1	0	1
TOTAL	377	13	102	262	17	163	22	1	21

Maricopa County	6,911	75	2,160	4,676	79	3,224	236	20	188
Apache Junction	26	0	10	16	0	14	0	0	0
Avondale	1,762	3	518	1,241	3	733	52	0	22
Buckeye	766	5	242	519	6	409	34	0	16
Cave Creek	90	1	24	65	1	32	8	0	3
Chandler	4,982	14	1,414	3,554	15	2,148	171	2	95
El Mirage	370	0	90	280	0	132	20	0	10
Gila Bend	54	2	14	38	2	19	2	1	1
Gilbert	3,093	7	487	2,599	7	651	101	1	40
Glendale	5,350	32	1,343	3,975	33	1,878	180	7	84
Goodyear	1,167	3	319	845	3	448	64	1	29
Mesa	7,641	35	2,241	5,365	36	3,095	321	11	193
Paradise Valley	156	1	27	128	1	36	5	0	1
Peoria	2,816	10	947	1,859	10	1,365	117	2	69
Phoenix	45,208	193	11,820	33,195	202	17,193	1,303	60	722
Scottsdale	4,526	24	1,361	3,141	24	1,955	228	10	138
Surprise	1,715	5	484	1,226	5	719	68	1	43
Tempe	8,899	14	2,691	6,194	15	3,935	272	4	170
Tolleson	422	2	103	317	2	161	13	1	12
Wickenburg	166	0	39	127	0	67	2	0	2
Youngtown	50	0	17	33	0	24	0	0	0
Guadalupe	187	1	48	138	1	77	6	1	8
Litchfield Park	32	0	11	21	0	23	0	0	0
Queen Creek	533	1	117	415	1	159	14	0	9
Fountain Hills	155	0	48	107	0	63	6	0	4
Carefree	28	0	8	20	0	11	1	0	0
TOTAL	97,105	428	26,583	70,094	446	38,571	3,224	122	1,859

Mohave County	1,499	41	477	981	47	768	80	10	50
Kingman	686	1	165	520	1	221	20	1	5
Lake Havasu City	568	2	162	404	2	216	48	0	24
Bullhead City	447	7	118	322	7	177	19	0	10
Colorado City	3	0	2	1	0	5	0	0	0
TOTAL	3,203	51	924	2,228	57	1,387	167	11	89

Crashes in Maricopa County accounted for 74.84% of all crashes and 46.98% of fatal crashes.

Section 2: – Geographic Location

Table 2 – 5

Analysis by Jurisdiction

COUNTIES Cities	Number of Crashes				No. of Persons		Alcohol Related		
	Total	Fatal	Injury	PDO	Killed	Injured	Crashes	Killed	Injured
Navajo County	608	22	169	417	22	262	43	4	34
Holbrook	28	0	10	18	0	14	1	0	0
Show Low	299	1	75	223	1	106	21	1	14
Snowflake	53	0	18	35	0	27	8	0	7
Taylor	43	0	10	33	0	20	4	0	1
Winslow	107	1	23	83	1	33	15	0	5
Pinetop-Lakeside	112	0	31	81	0	58	8	0	8
TOTAL	1,250	24	336	890	24	520	100	5	69
Pima County	2,021	43	648	1,330	51	981	124	26	104
South Tucson	28	1	8	19	1	9	1	0	1
Tucson	6,179	77	2,702	3,400	79	3,837	329	20	214
Sahuarita	228	2	65	161	2	95	12	1	5
Oro Valley	548	4	173	371	6	254	9	0	5
Marana	846	2	196	648	2	273	41	0	14
TOTAL	9,850	129	3,792	5,929	141	5,449	516	47	343
Pinal County	2,085	39	597	1,449	45	923	107	9	93
Casa Grande	831	8	244	579	10	345	56	6	30
Coolidge	181	0	63	118	0	124	6	0	2
Eloy	140	7	49	84	8	79	6	2	5
Florence	103	2	47	54	2	72	1	1	0
Kearny	6	0	3	3	0	6	1	0	2
Mammoth	0	0	0	0	0	0	0	0	0
Queen Creek	29	0	4	25	0	4	0	0	0
Superior	6	0	4	2	0	6	0	0	0
Apache Junction	594	1	195	398	1	262	30	0	27
Maricopa	382	3	97	282	3	148	18	0	3
TOTAL	4,357	60	1,303	2,994	69	1,969	225	18	162
Santa Cruz County	280	4	57	219	4	73	10	1	3
Nogales	142	2	22	118	2	35	3	0	1
Patagonia	1	0	1	0	0	1	0	0	0
TOTAL	423	6	80	337	6	109	13	1	4
Yavapai County	1,787	40	552	1,195	43	827	90	7	72
Clarkdale	21	0	6	15	0	12	4	0	2
Cottonwood	233	0	73	160	0	96	5	0	2
Jerome	13	0	7	6	0	7	2	0	1
Peoria	2	0	1	1	0	1	0	0	0
Prescott	715	2	211	502	2	296	31	0	17
Prescott Valley	534	5	154	375	5	226	22	0	19
Chino Valley	188	1	48	139	2	61	18	0	6
Camp Verde	158	1	40	117	1	56	5	0	0
Dewey-Humboldt	33	0	10	23	0	14	0	0	0
Sedona	117	1	21	95	1	34	5	0	0
Wickenburg	12	0	4	8	0	6	0	0	0
TOTAL	3,813	50	1,127	2,636	54	1,636	182	7	119

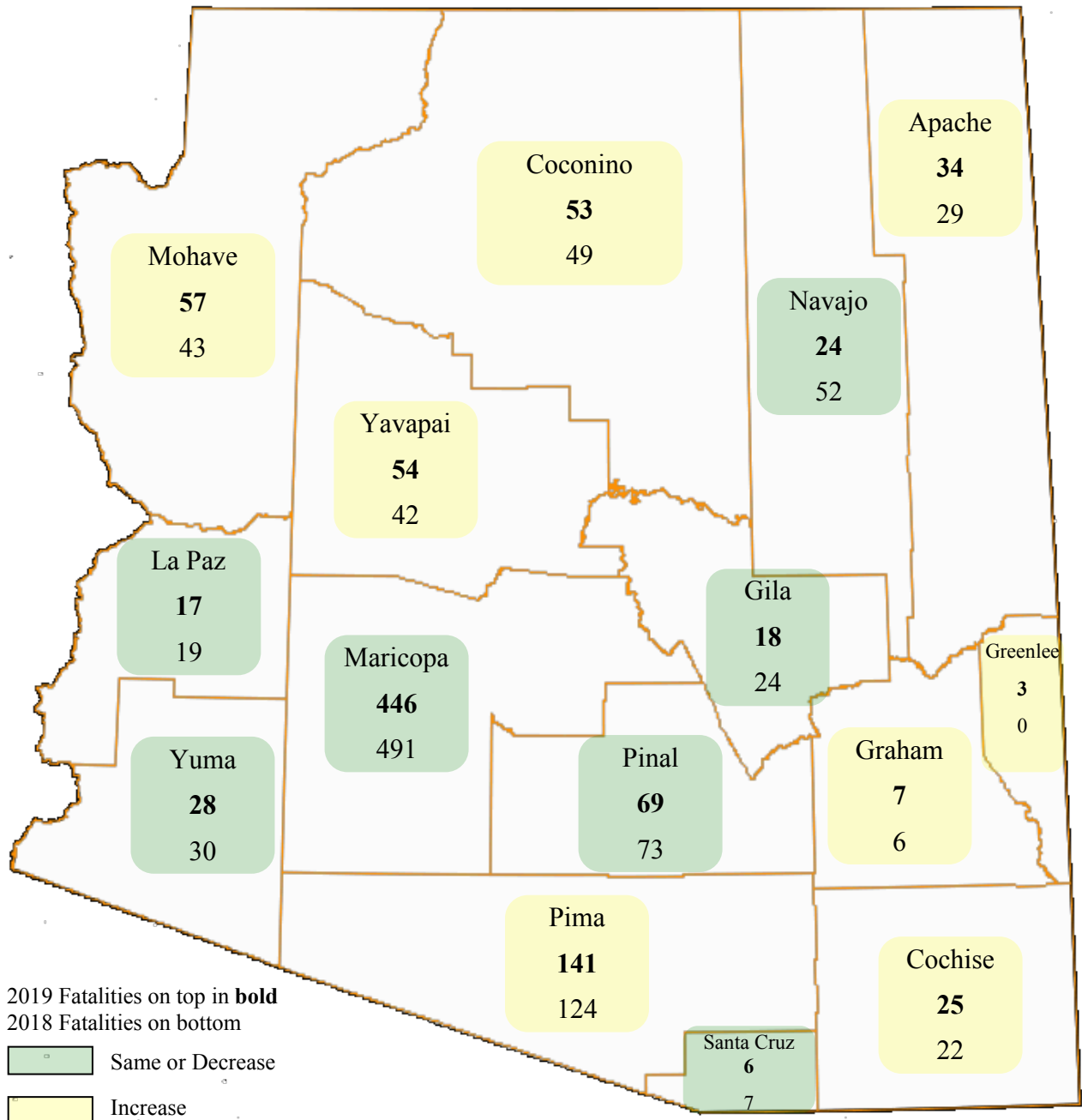
Section 2: – Geographic Location

Table 2 – 5
Analysis by Jurisdiction

COUNTIES Cities	Number of Crashes				No. of Persons		Alcohol Related		
	Total	Fatal	Injury	PDO	Killed	Injured	Crashes	Killed	Injured
Yuma County	721	18	223	480	19	356	27	3	22
Somerton	50	1	8	41	1	14	4	0	0
Yuma	1,664	6	660	998	6	920	85	0	55
Wellton	15	1	4	10	2	4	1	0	0
San Luis	229	0	58	171	0	66	11	0	4
TOTAL	2,679	26	953	1,700	28	1,360	128	3	81

Note: Some individual city data may be incomplete due to lack of timely reporting or changes in crash reporting procedures.

Total Fatalities by County for 2018 and 2019



Section 2: – Geographic Location

Chart 2 – 1

Urban and Rural Crashes by Day of Week

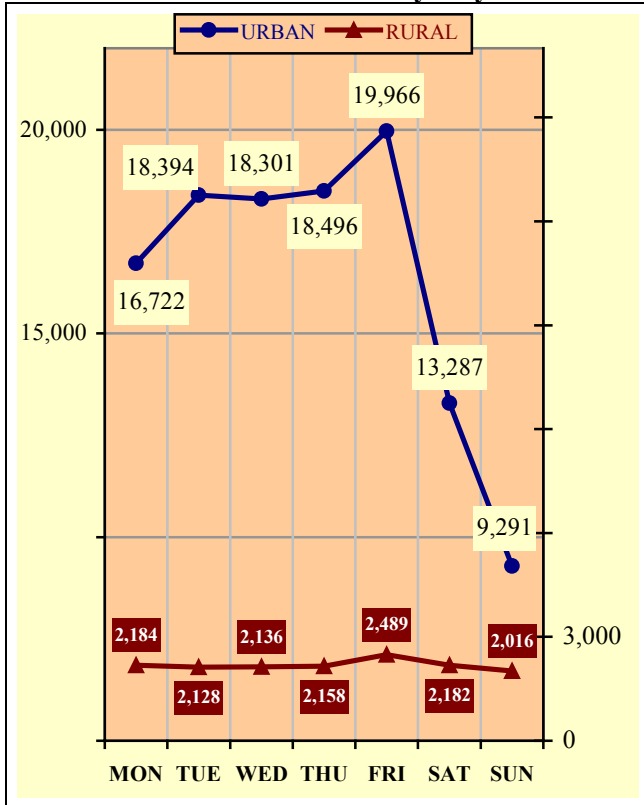


Chart 2 – 2

Urban and Rural Fatal Crashes by Day of Week

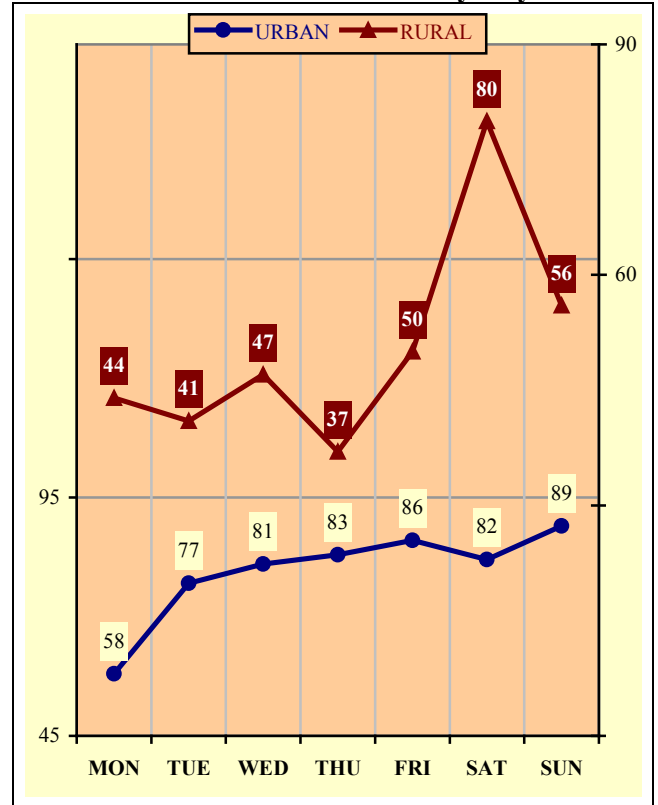
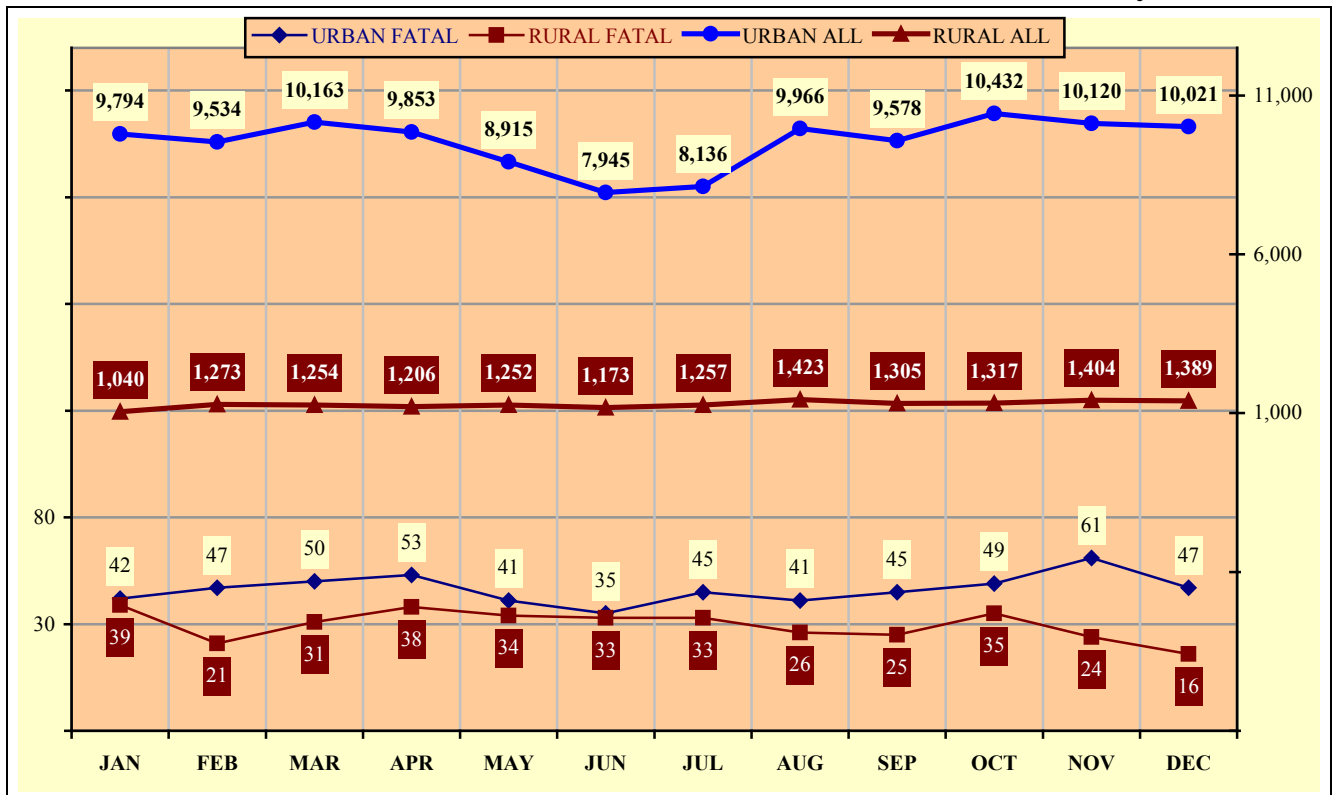


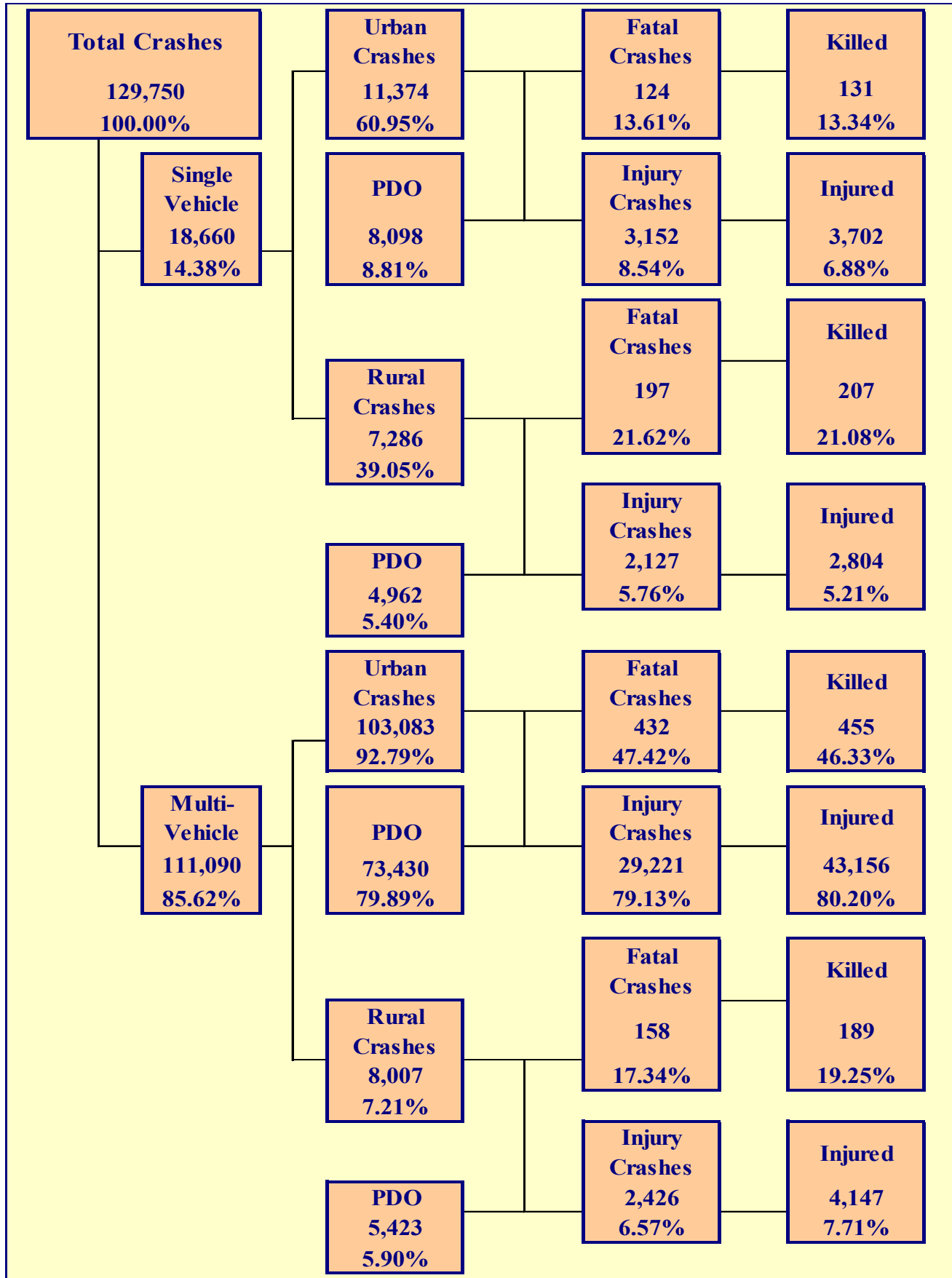
Chart 2 – 3

All Urban and Rural Crashes vs. Urban and Rural Fatal Crashes by Month



Section 3

Crash Descriptions



Section 3: – Crash Descriptions

Table 3 – 1
Manner of Collision in Multi-Vehicle Crashes

Manner of Collision Type	Number of Crashes							
	Total	Percent of Total Crashes	Fatal	Percent of Fatal Crashes	Injury	Percent of Injury Crashes	PDO	Percent of PDO Crashes
Angle	15,738	14.17%	78	13.22%	5,412	17.10%	10,248	13.00%
Left Turn	18,903	17.02%	69	11.69%	6,905	21.82%	11,929	15.13%
Rear End	47,936	43.15%	63	10.68%	13,491	42.63%	34,382	43.60%
Head-On	1,954	1.76%	60	10.17%	833	2.63%	1,061	1.35%
Sideswipe (same)	18,106	16.30%	20	3.39%	2,109	6.66%	15,977	20.26%
Sideswipe (opposite)	1,681	1.51%	12	2.03%	371	1.17%	1,298	1.65%
U-Turn	307	0.28%	5	0.85%	85	0.27%	217	0.28%
Other*	5,572	5.02%	272	46.10%	2,276	7.19%	3,024	3.83%
Unknown	893	0.80%	11	1.86%	165	0.52%	717	0.91%
TOTAL	111,090	100.00%	590	100.00%	31,647	100.00%	78,853	100.00%

*Other includes pedestrian and pedalcyclist crashes

Table 3 – 2
Lighting Conditions

Type of Lighting Conditions	Number of Crashes				Number of Persons	
	Total	Fatal	Injury	PDO	Killed	Injured
Daylight	91,184	414	26,056	64,714	451	38,159
Dawn	2,442	17	675	1,750	17	896
Dusk	3,379	24	1,034	2,321	26	1,491
Dark - Lighted	24,964	219	7,131	17,614	231	10,303
Dark - Not Lighted	6,569	151	1,816	4,602	167	2,631
Dark - Unknown Lighting	425	25	65	335	26	88
Unknown	787	61	149	577	64	241
TOTAL	129,750	911	36,926	91,913	982	53,809

Table 3 – 3
Weather Conditions

Type of Weather Conditions	Number of Crashes				Number of Persons	
	Total	Fatal	Injury	PDO	Killed	Injured
Clear	109,756	644	31,462	77,650	699	45,898
Cloudy	11,799	82	3,397	8,320	86	4,973
Sleet/Hail	219	1	62	156	1	81
Rain	5,830	35	1,581	4,214	37	2,188
Snow or Blowing Snow	715	2	132	581	2	192
Severe Crosswinds	7	0	1	6	0	2
Blowing Sand, Soil, Dirt	55	0	17	38	0	35
Fog, Smog, Smoke	98	0	24	74	0	35
Other	92	1	34	57	1	44
Unknown	1,179	146	216	817	156	361
TOTAL	129,750	911	36,926	91,913	982	53,809

Section 3: – Crash Descriptions

Table 3 – 4
Road Surface Conditions

Type of Road Surface Condition	Number of Drivers				Number of Persons	
	Total	In Fatal Crashes	In Injury Crashes	In PDO Crashes	Killed	Injured
Dry	235,347	1,110	68,540	165,697	775	50,015
Wet	14,289	67	3,988	10,234	46	2,943
Snow/Slush	1,178	5	233	940	3	210
Ice/Frost	649	2	147	500	1	169
Water (standing or moving)	350	2	99	249	2	96
Mud, Dirt, Gravel, Sand	418	9	170	239	8	158
Other	99	1	27	71	1	27
Unknown	2,929	177	440	2,312	146	191
TOTAL	255,259	1,373	73,644	180,242	982	53,809

Table 3 – 5
Roadway Grade

Type of Roadway Grade	Number of Drivers				Number of Persons	
	Total	In Fatal Crashes	In Injury Crashes	In PDO Crashes	Killed	Injured
Level	238,991	1,014	68,921	169,056	700	49,917
Downhill	7,433	109	2,375	4,949	85	2,095
Uphill	6,003	66	1,884	4,053	47	1,568
Hillcrest	50	0	8	42	0	6
Sag/Dip/Bottom	86	0	29	57	0	26
Unknown	2,696	184	427	2,085	150	197
TOTAL	255,259	1,373	73,644	180,242	982	53,809

Table 3 – 6
Roadway Alignment

Type of Roadway Alignment	Number of Drivers				Number of Persons	
	Total	In Fatal Crashes	In Injury Crashes	In PDO Crashes	Killed	Injured
Straight	238,846	1,020	69,355	168,471	685	50,198
Curve Left	6,265	87	1,717	4,461	74	1,588
Curve Right	6,417	94	1,836	4,487	81	1,613
Unknown	3,731	172	736	2,823	142	410
TOTAL	255,259	1,373	73,644	180,242	982	53,809

Section 3: – Crash Descriptions

Chart 3 – 1

All Crashes vs. Fatal Crashes by Time of Day - Weekdays

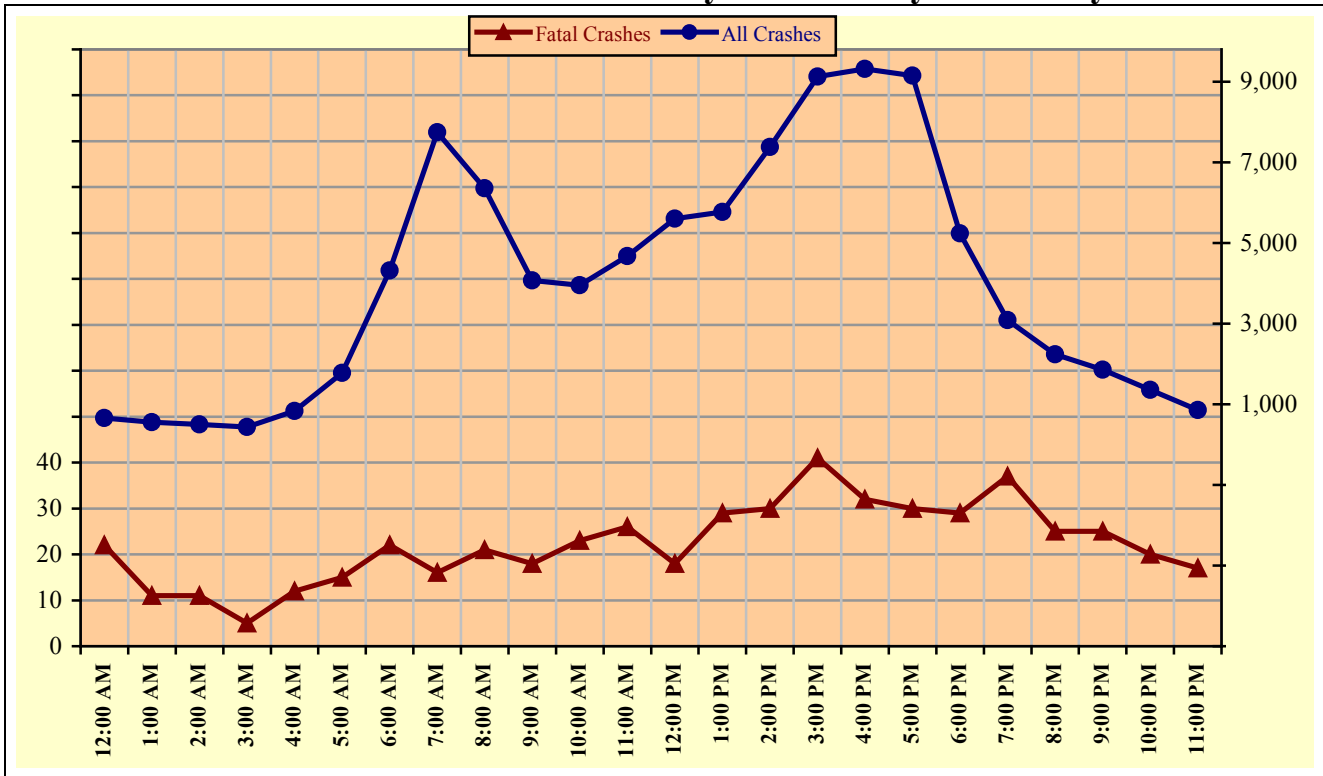
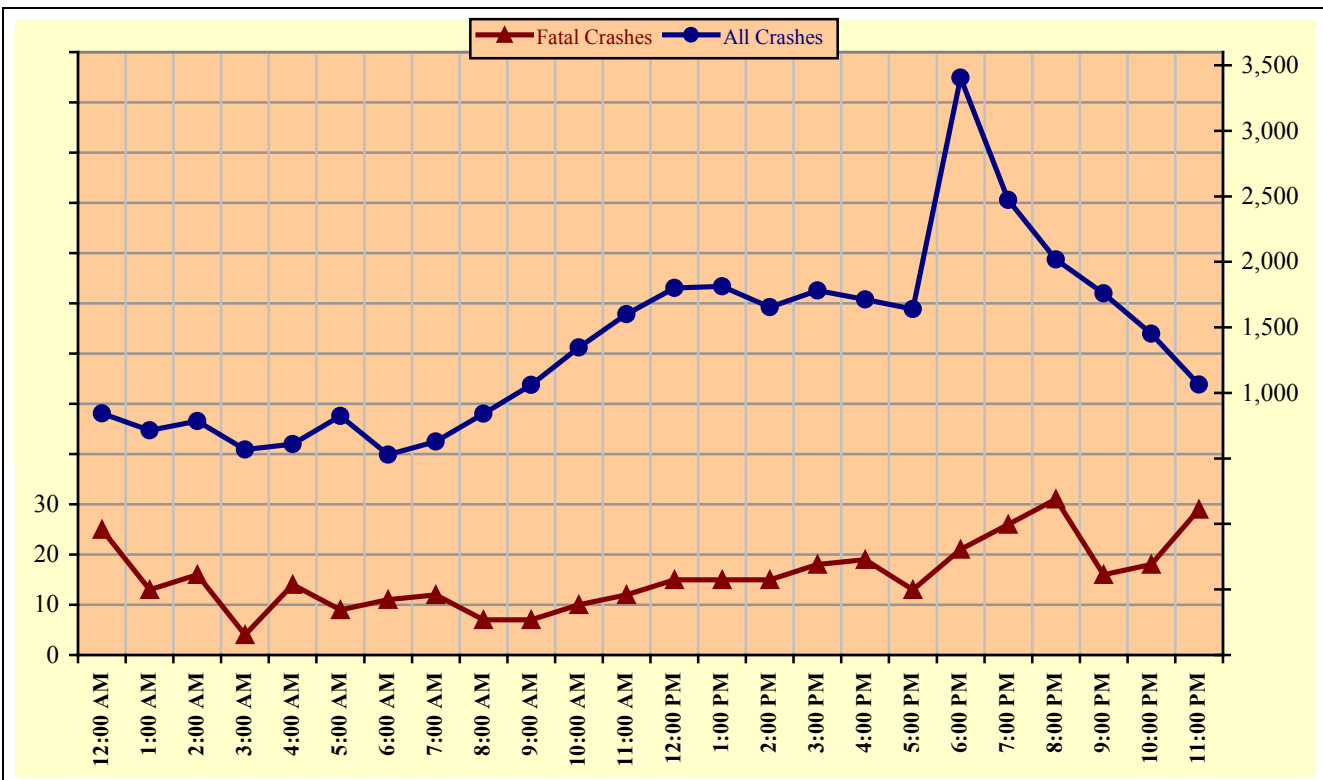


Chart 3 – 2

All Crashes vs. Fatal Crashes by Time of Day - Weekends



Section 3: – Crash Descriptions

Chart 3 – 3
Crashes by Day of Week

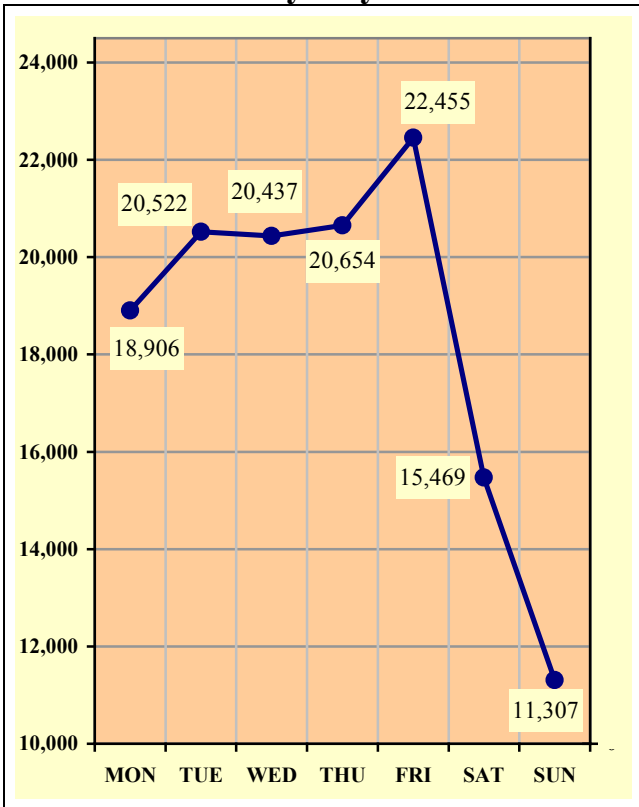


Chart 3 – 4
Fatal Crashes by Day of Week

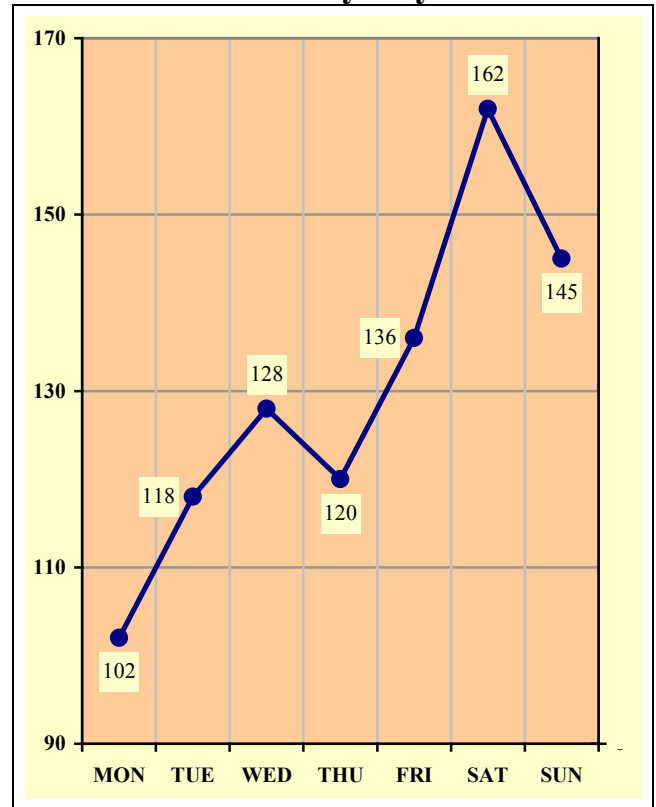
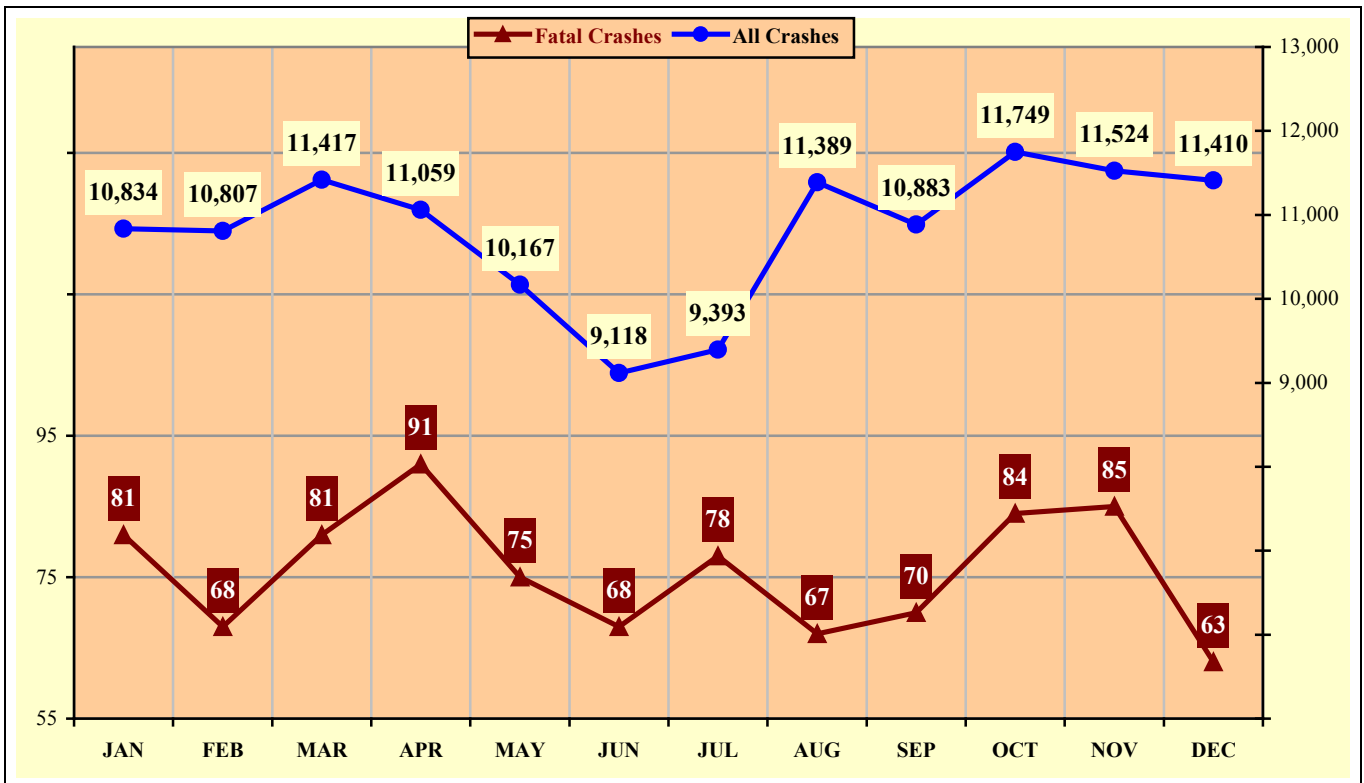


Chart 3 – 5
All Crashes vs. Fatal Crashes by Month

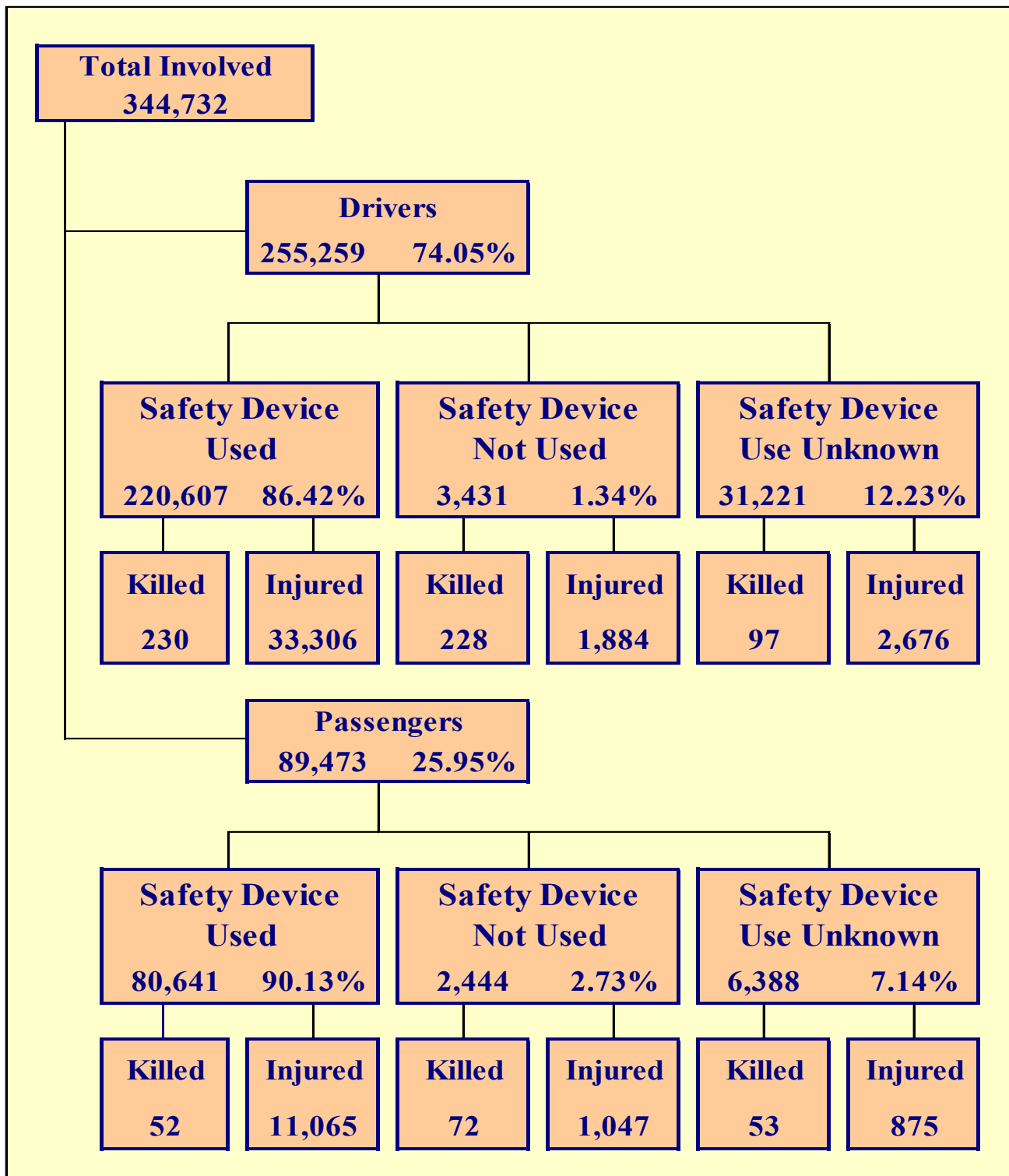


Section 3: – Crash Descriptions

Table 3 – 7
Crashes by Hour and Day of Week

Hour Beginning	Total Crashes		Monday		Tuesday		Wednesday		Thursday		Friday		Saturday		Sunday		Weekdays		Weekends	
	All	Fatal	All	Fatal	All	Fatal	All	Fatal	All	Fatal	All	Fatal	All	Fatal	All	Fatal	All	Fatal	All	Fatal
12:00 AM	1,499	47	191	7	160	7	154	7	155	4	187	4	301	8	351	10	656	22	843	25
1:00 AM	1,270	24	131	1	127	3	140	3	121	4	169	1	281	4	301	8	557	11	713	13
2:00 AM	1,282	27	124	0	112	0	102	1	123	4	160	6	334	9	327	7	497	11	785	16
3:00 AM	999	9	107	0	102	2	115	0	90	1	125	2	227	3	233	1	432	5	567	4
4:00 AM	1,444	26	191	3	166	3	234	3	213	3	221	3	215	4	204	7	834	12	610	14
5:00 AM	2,604	24	422	3	461	7	464	3	443	2	411	3	231	3	172	3	1,779	15	825	9
6:00 AM	4,844	33	813	2	919	6	945	6	894	3	744	5	293	6	236	5	4,315	22	529	11
7:00 AM	8,371	28	1,515	4	1,690	2	1,547	2	1,603	6	1,387	2	380	5	249	7	7,742	16	629	12
8:00 AM	7,198	28	1,227	5	1,352	5	1,410	4	1,253	7	1,115	0	506	4	335	3	6,357	21	841	7
9:00 AM	5,130	25	737	3	878	3	864	3	808	5	782	4	658	3	403	4	4,069	18	1,061	7
10:00 AM	5,296	33	785	3	760	4	799	7	760	3	845	6	818	6	529	4	3,949	23	1,347	10
11:00 AM	6,272	38	872	4	868	3	902	9	902	6	1,128	4	956	3	644	9	4,672	26	1,600	12
12:00 PM	7,406	33	1,024	1	1,090	4	1,125	5	1,060	3	1,306	5	1,085	5	716	10	5,605	18	1,801	15
1:00 PM	7,585	44	1,027	9	1,084	5	1,127	5	1,104	3	1,430	7	1,078	6	735	9	5,772	29	1,813	15
2:00 PM	9,034	45	1,348	3	1,496	5	1,423	7	1,424	9	1,689	6	969	9	685	6	7,380	30	1,654	15
3:00 PM	10,904	59	1,666	8	1,869	7	1,695	5	1,874	12	2,020	9	1,015	9	765	9	9,124	41	1,780	18
4:00 PM	11,028	51	1,616	6	1,934	6	1,822	3	1,969	11	1,975	6	1,002	11	710	8	9,316	32	1,712	19
5:00 PM	10,787	43	1,697	3	1,869	7	1,880	8	1,916	4	1,786	8	933	8	706	5	9,148	30	1,639	13
6:00 PM	8,643	50	1,174	5	1,321	7	1,382	8	1,362	9	1,580	8	1,045	7	779	6	5,239	29	3,404	21
7:00 PM	5,556	63	722	6	745	6	774	17	843	8	1,007	7	852	9	613	10	3,084	37	2,472	26
8:00 PM	4,258	56	549	7	557	10	576	5	559	3	752	11	703	13	562	7	2,241	25	2,017	31
9:00 PM	3,615	41	469	9	432	7	439	8	515	1	664	9	606	5	490	2	1,855	25	1,760	16
10:00 PM	2,805	38	303	5	329	5	311	6	411	4	549	7	570	9	332	2	1,354	20	1,451	18
11:00 PM	1,920	46	196	5	201	4	207	3	252	5	423	13	411	13	230	3	856	17	1,064	29
TOTAL	129,750	911	18,906	102	20,522	118	20,437	128	20,654	120	22,455	136	15,469	162	11,307	145	96,833	535	32,917	376

Crashes during Weekends accounted for 25.37% of all crashes and 41.27% of Fatal Crashes.



Section 4: – Safety Devices

**Table 4 – 1
Child Safety Device Usage (less than five years old)**

Severity of Injury	Safety Device Used	Percent of Safety Device Used	Safety Device Not Used	Percent of Safety Device Not Used	Safety Device Use Unknown	Percent of Unknown
No Injury	10,066	91.05%	91	63.19%	179	74.58%
Unknown Injury	168	1.52%	4	2.78%	35	14.58%
Possible Injury	558	5.05%	22	15.28%	13	5.42%
Suspected Minor Injury	234	2.12%	15	10.42%	8	3.33%
Suspected Serious Injury	24	0.22%	11	7.64%	4	1.67%
Fatal Injury	5	0.05%	1	0.69%	1	0.42%
TOTALS	11,055	100.00%	144	100.00%	240	100.00%

**Table 4 – 2
Driver Safety Device Usage**

Severity of Injury	Safety Device Used	Percent of Safety Device Used	Safety Device Not Used	Percent of Safety Device Not Used	Safety Device Use Unknown	Percent of Unknown
No Injury	185,166	83.93%	1,267	36.93%	17,412	55.77%
Unknown Injury	1,905	0.86%	52	1.52%	11,036	35.35%
Possible Injury	18,890	8.56%	526	15.33%	1,160	3.72%
Suspected Minor Injury	13,017	5.90%	872	25.42%	1,125	3.60%
Suspected Serious Injury	1,399	0.63%	486	14.16%	391	1.25%
Fatal Injury	230	0.10%	228	6.65%	97	0.31%
TOTALS	220,607	100.00%	3,431	100.00%	31,221	100.00%

**Table 4 – 3
Passenger Safety Device Usage**

Severity of Injury	Safety Device Used	Percent of Safety Device Used	Safety Device Not Used	Percent of Safety Device Not Used	Safety Device Use Unknown	Percent of Unknown
No Injury	68,544	85.00%	1,278	52.29%	4,608	72.14%
Unknown Injury	980	1.22%	47	1.92%	852	13.34%
Possible Injury	6,718	8.33%	369	15.10%	439	6.87%
Suspected Minor Injury	3,898	4.83%	461	18.86%	324	5.07%
Suspected Serious Injury	449	0.56%	217	8.88%	112	1.75%
Fatal Injury	52	0.06%	72	2.95%	53	0.83%
TOTALS	80,641	100.00%	2,444	100.00%	6,388	100.00%

Section 4: – Safety Devices

Table 4 – 4
Driver Safety Device Usage by Gender

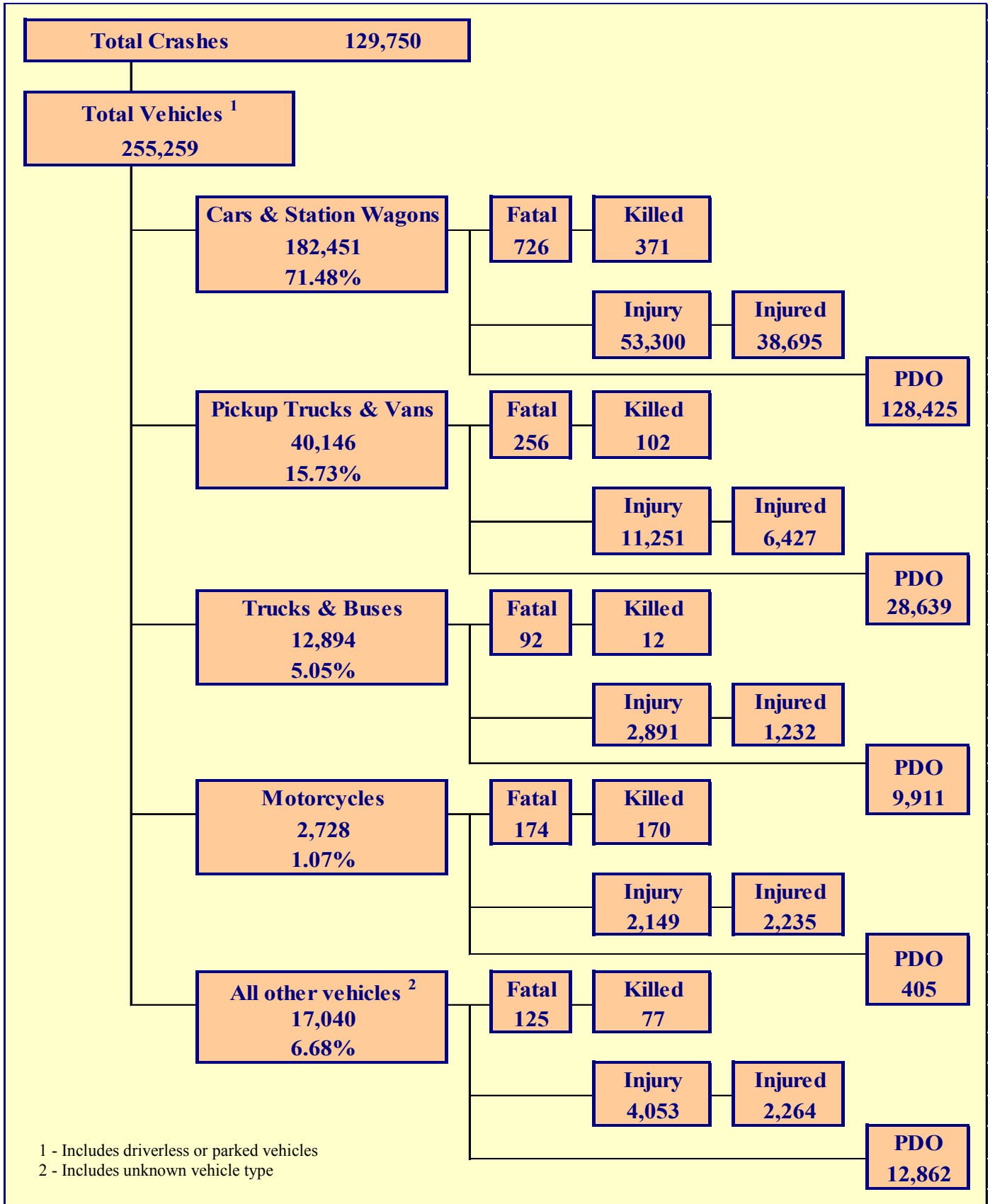
Gender of Driver	Number of Drivers						Total	Percent of Total
	Safety Device Used	Percent of Safety Device Used	Safety Device Not Used	Percent of Safety Device Not Used	Safety Device Use Unknown	Percent of Unknown		
Male	124,574	56.47%	2,427	70.74%	9,861	31.58%	136,862	53.62%
Female	95,876	43.46%	972	28.33%	4,818	15.43%	101,666	39.83%
Unknown	157	0.07%	32	0.93%	16,542	52.98%	16,731	6.55%
TOTAL	220,607	100.00%	3,431	100.00%	31,221	100.00%	255,259	100.00%

Table 4 – 5
Driver Safety Device Usage by Age

Driver Age Group	Number of Drivers						Total	Percent of Total
	Safety Device Used	Percent of Safety Device Used	Safety Device Not Used	Percent of Safety Device Not Used	Safety Device Use Unknown	Percent of Unknown		
15 & Under	226	0.10%	30	0.87%	51	0.16%	307	0.12%
16	3,168	1.44%	42	1.22%	170	0.54%	3,380	1.32%
17	4,548	2.06%	73	2.13%	221	0.71%	4,842	1.90%
18	5,868	2.66%	94	2.74%	356	1.14%	6,318	2.48%
19	6,233	2.83%	123	3.58%	330	1.06%	6,686	2.62%
20	6,223	2.82%	96	2.80%	347	1.11%	6,666	2.61%
21	6,172	2.80%	110	3.21%	362	1.16%	6,644	2.60%
22	6,013	2.73%	132	3.85%	390	1.25%	6,535	2.56%
23	5,955	2.70%	116	3.38%	407	1.30%	6,478	2.54%
24	5,789	2.62%	111	3.24%	362	1.16%	6,262	2.45%
25-34	50,547	22.91%	884	25.77%	3,135	10.04%	54,566	21.38%
35-44	37,792	17.13%	550	16.03%	2,208	7.07%	40,550	15.89%
45-54	31,801	14.42%	379	11.05%	1,811	5.80%	33,991	13.32%
55-64	26,286	11.92%	336	9.79%	1,438	4.61%	28,060	10.99%
65-74	15,147	6.87%	190	5.54%	824	2.64%	16,161	6.33%
75 & Older	8,064	3.66%	101	2.94%	447	1.43%	8,612	3.37%
Unknown	775	0.35%	64	1.87%	18,362	58.81%	19,201	7.52%
TOTAL	220,607	100.00%	3,431	100.00%	31,221	100.00%	255,259	100.00%

Section 5

Motor Vehicle and Driver Descriptions



Section 5: – Motor Vehicle and Driver Descriptions

**Table 5 – 1
Arizona Motor Vehicle Registrations**

Privately Owned Vehicles	5,365,435
Commercial Vehicles	591,369
Buses and Taxis	697
Motorcycles	209,719
Mopeds	261
TOTAL	6,167,481
Source: MVD - MV988 MV630419, Currently Registered Vehicles by County Listing, dated 12/31/2019.	

**Table 5 – 2
Motor Vehicle Crash Involvement by Vehicle Type**

Motor Vehicle Type	Number of Vehicles				
	Total	Percent of Total	In Fatal Crashes	In Injury Crashes	In PDO Crashes
Passenger Cars (Sedans, Convertibles, etc.)	127,345	49.889%	444	36,743	90,158
Station Wagons	55,106	21.588%	282	16,557	38,267
Pickup Trucks	34,802	13.634%	222	9,670	24,910
Vans	5,344	2.094%	34	1,581	3,729
Truck Tractor (with or without Semi-Trailer)	1,912	0.749%	60	414	1,438
Concrete Mixer Trucks	46	0.018%	0	8	38
Dump Trucks	202	0.079%	2	49	151
Garbage Trucks	123	0.048%	3	26	94
Tanker Trucks	47	0.018%	1	7	39
Wrecker or Tow Trucks	98	0.038%	4	22	72
Other Truck Combinations	9,471	3.710%	16	2,139	7,316
School Bus	131	0.051%	2	28	101
Commercial or Non-Commercial Bus	864	0.338%	4	198	662
Motorcycle (two or three wheel)	2,728	1.069%	174	2,149	405
All Terrain Vehicle or Cycle	220	0.086%	20	117	83
Golf Carts	76	0.030%	5	40	31
Moped	29	0.011%	2	24	3
Recreational Vehicle	222	0.087%	4	36	182
Motor Home or House Car	86	0.034%	2	18	66
Fire Trucks	47	0.018%	1	10	36
Ambulances	64	0.025%	0	13	51
Other Types Of Vehicles	96	0.038%	0	28	68
Vehicle Type Unknown	16,200	6.346%	91	3,767	12,342
TOTAL	255,259	100.00%	1,373	73,644	180,242

Section 5: – Motor Vehicle and Driver Descriptions

Table 5 – 3
Hit and Run Drivers Involved in Crashes

Hit and Run	Number of Crashes				Number of Persons	
	Total	Fatal	Injury	PDO	Killed	Injured
Yes	15,050	59	2,720	12,271	62	3,459
No	114,700	852	34,206	79,642	920	50,350
TOTAL	129,750	911	36,926	91,913	982	53,809

Table 5 – 4
Gender of Drivers Involved in Crashes

Gender of Driver	Number of Drivers							
	Total	Percent of Total	In Fatal Crashes	Percent of Fatal	In Injury Crashes	Percent of Injury	In PDO Crashes	Percent of PDO
Male	136,862	53.62%	904	65.84%	39,833	54.09%	96,125	53.33%
Female	101,666	39.83%	369	26.88%	31,230	42.41%	70,067	38.87%
Unknown	16,731	6.55%	100	7.28%	2,581	3.50%	14,050	7.80%
TOTAL	255,259	100.00%	1,373	100.00%	73,644	100.00%	180,242	100.00%

Table 5 – 5
License Status of Drivers Involved in Crashes

License Status of Driver	Number of Drivers							
	Total	Percent of Total	In Fatal Crashes	Percent of Fatal	In Injury Crashes	Percent of Injury	In PDO Crashes	Percent of PDO
Arizona License	192,122	75.27%	1,006	73.27%	57,209	77.68%	133,907	74.29%
All Others*	63,137	24.73%	367	26.73%	16,435	22.32%	46,335	25.71%
TOTAL	255,259	100.00%	1,373	100.00%	73,644	100.00%	180,242	100.00%

*Includes drivers that have a suspended, revoked, out-of-state or country license, as well as drivers with no license or unknown license type

Table 5 – 6
Passengers Killed and Injured by Age and Gender

Age of Passenger	Passengers Killed				Passengers Injured			
	Total	Male	Female	Gender Unknown	Total	Male	Female	Gender Unknown
0-4	7	3	4	0	722	364	358	0
5-9	5	1	4	0	983	485	498	0
10-14	9	5	4	0	1,157	505	652	0
15-19	24	12	12	0	1,845	753	1,092	0
20-24	25	17	8	0	1,363	526	837	0
25-34	17	10	7	0	1,760	696	1,064	0
35-44	16	11	5	0	1,215	423	792	0
45-54	17	8	9	0	1,162	351	811	0
55-64	22	5	17	0	1,033	274	759	0
65-74	12	3	9	0	827	194	633	0
75 & Older	22	10	12	0	557	142	415	0
Unknown	1	0	0	1	363	128	202	33
TOTAL	177	85	91	1	12,987	4,841	8,113	33

Section 5: – Motor Vehicle and Driver Descriptions

Table 5 – 7

Drivers and Passengers Killed and Injured by Vehicle Type

Motor Vehicle Type	Number of Drivers		Number of Passengers	
	Killed	Injured	Killed	Injured
Passenger Cars (Sedans, Convertibles, etc.)	164	20,277	63	6,548
Station Wagons	98	8,438	46	3,432
Pickup Trucks	61	3,946	22	1,392
Vans	12	674	7	415
Truck Tractor (with or without Semi-Trailer)	8	94	2	11
Concrete Mixer Trucks	0	1	0	0
Dump Trucks	0	11	0	2
Garbage Trucks	0	4	0	0
Tanker Trucks	0	1	0	0
Wrecker or Tow Trucks	0	7	0	1
Other Truck Combinations	0	675	1	229
School Bus	0	5	0	4
Commercial or Non-Commercial Bus	0	37	1	150
Motorcycle (two or three wheel)	164	2,105	6	130
All Terrain Vehicle or Cycle	16	88	3	49
Golf Carts	3	30	2	5
Moped	2	23	0	3
Recreational Vehicle	2	19	2	16
Motor Home or House Car	0	4	0	2
Fire Trucks	0	1	0	6
Ambulances	0	5	0	5
Other Types Of Vehicles	0	14	0	1
Vehicle Type Unknown	25	1,407	22	586
TOTAL	555	37,866	177	12,987

Table 5 – 8

Drivers Killed and Injured by Age and Gender

Age of Driver	Drivers Killed			Drivers Injured			
	Total	Male	Female	Total	Male	Female	Gender Unknown
0-4	0	0	0	0	0	0	0
5-9	0	0	0	1	1	0	0
10-14	1	1	0	25	20	5	0
15-19	28	20	8	3,040	1,490	1,550	0
20-24	53	42	11	4,958	2,517	2,441	0
25-34	104	77	27	8,789	4,293	4,496	0
35-44	90	69	21	6,280	3,151	3,129	0
45-54	72	54	18	5,451	2,741	2,710	0
55-64	80	64	16	4,703	2,485	2,218	0
65-74	64	54	10	2,835	1,481	1,354	0
75 & Older	62	42	20	1,625	870	755	0
Unknown	1	1	0	159	71	37	51
TOTAL	555	424	131	37,866	19,120	18,695	51

Section 5: – Motor Vehicle and Driver Descriptions

Table 5 – 9
Licensed Drivers in Arizona by Age

Driver Age Group	Male Number	Percent of Male	Female Number	Percent of Female	Total Number	Percent of Total	Cumulative Percent
16	12,634	0.47%	12,880	0.48%	25,514	0.47%	0.47%
17	21,762	0.81%	21,288	0.79%	43,050	0.80%	1.28%
18	29,258	1.09%	27,755	1.03%	57,013	1.06%	2.34%
19	35,359	1.32%	33,240	1.24%	68,599	1.28%	3.61%
20	37,244	1.39%	35,301	1.31%	72,545	1.35%	4.96%
21	39,675	1.48%	37,347	1.39%	77,022	1.43%	6.39%
22	41,211	1.53%	38,569	1.43%	79,780	1.48%	7.88%
23	42,275	1.57%	40,473	1.50%	82,748	1.54%	9.42%
24	42,982	1.60%	41,679	1.55%	84,661	1.57%	10.99%
25-34	471,001	17.54%	464,729	17.28%	935,730	17.41%	28.40%
35-44	466,917	17.38%	462,483	17.20%	929,400	17.29%	45.69%
45-54	467,303	17.40%	449,443	16.71%	916,746	17.05%	62.75%
55-64	460,883	17.16%	472,095	17.55%	932,978	17.36%	80.10%
65-74	319,264	11.89%	344,707	12.82%	663,971	12.35%	92.45%
75 & older	198,205	7.38%	207,379	7.71%	405,584	7.55%	100.00%
TOTALS	2,685,973	100.00%	2,689,368	100.00%	5,375,341	100.00%	100.00%

Source: MVD - MV708 MV650653-1, Point-in-Time Driver Credential Report/All Driver Licenses by Age, Gender, & Class (page 19), dated 1/2/2020.

Table 5 – 10
Driver Involvement by Age

Driver Age Group	Number of Drivers							
	Total	Percent of Total	In Fatal Crashes	Percent of Fatal	In Injury Crashes	Percent of Injury	In PDO Crashes	Percent of PDO
15 & Under	307	0.12%	2	0.15%	116	0.16%	189	0.10%
16	3,380	1.32%	11	0.80%	913	1.24%	2,456	1.36%
17	4,842	1.90%	11	0.80%	1,302	1.77%	3,529	1.96%
18	6,318	2.48%	20	1.46%	1,781	2.42%	4,517	2.51%
19	6,686	2.62%	27	1.97%	1,996	2.71%	4,663	2.59%
20	6,666	2.61%	27	1.97%	1,917	2.60%	4,722	2.62%
21	6,644	2.60%	29	2.11%	2,021	2.74%	4,594	2.55%
22	6,535	2.56%	28	2.04%	1,849	2.51%	4,658	2.58%
23	6,478	2.54%	29	2.11%	1,820	2.47%	4,629	2.57%
24	6,262	2.45%	31	2.26%	1,784	2.42%	4,447	2.47%
25-34	54,566	21.38%	256	18.65%	16,366	22.22%	37,944	21.05%
35-44	40,550	15.89%	208	15.15%	11,986	16.28%	28,356	15.73%
45-54	33,991	13.32%	176	12.82%	10,212	13.87%	23,603	13.10%
55-64	28,060	10.99%	191	13.91%	8,558	11.62%	19,311	10.71%
65-74	16,161	6.33%	125	9.10%	5,019	6.82%	11,017	6.11%
75 & Older	8,612	3.37%	97	7.06%	2,838	3.85%	5,677	3.15%
Unknown	19,201	7.52%	105	7.65%	3,166	4.30%	15,930	8.84%
TOTAL	255,259	100.00%	1,373	100.00%	73,644	100.00%	180,242	100.00%

Section 5: – Motor Vehicle and Driver Descriptions

Table 5 – 11
Driver Violations

Type of Violation or Behavior	Number of Drivers							
	Total	Percent of Total	In Fatal Crashes	Percent of Fatal	In Injury Crashes	Percent of Injury	In PDO Crashes	Percent of PDO
No Improper Action	126,454	49.54%	519	37.80%	37,339	50.70%	88,596	49.15%
Speed too Fast for Conditions	43,041	16.86%	194	14.13%	13,118	17.81%	29,729	16.49%
Exceeded Lawful Speed	1,075	0.42%	50	3.64%	436	0.59%	589	0.33%
Failed to Yield Right-Of-Way	21,915	8.59%	83	6.05%	7,665	10.41%	14,167	7.86%
Followed Too Closely	8,856	3.47%	6	0.44%	2,276	3.09%	6,574	3.65%
Ran Stop Sign	1,230	0.48%	22	1.60%	489	0.66%	719	0.40%
Disregarded Traffic Signal	4,897	1.92%	22	1.60%	2,105	2.86%	2,770	1.54%
Made Improper Turn	5,410	2.12%	17	1.24%	1,326	1.80%	4,067	2.26%
Drove in Opposing Lane	465	0.18%	8	0.58%	175	0.24%	282	0.16%
Drove Left of Center Line	521	0.20%	30	2.18%	200	0.27%	291	0.16%
Passed in No-Passing Zone	114	0.04%	8	0.58%	18	0.02%	88	0.05%
Unsafe Lane Change	9,564	3.75%	25	1.82%	1,316	1.79%	8,223	4.56%
Failed to Keep in Proper Lane	4,990	1.95%	63	4.59%	1,103	1.50%	3,824	2.12%
Crossed Median	93	0.04%	8	0.58%	48	0.07%	37	0.02%
Aggressive Driving	135	0.05%	4	0.29%	38	0.05%	93	0.05%
Wrong Way Driving	69	0.03%	9	0.66%	30	0.04%	30	0.02%
Other	6,782	2.66%	33	2.40%	1,623	2.20%	5,126	2.84%
Unknown	19,648	7.70%	272	19.81%	4,339	5.89%	15,037	8.34%
TOTAL	255,259	100.00%	1,373	100.00%	73,644	100.00%	180,242	100.00%

Table 5 – 12
Driver Physical Condition

Type of Condition	Number of Drivers							
	Total	Percent of Total	In Fatal Crashes	Percent of Fatal	In Injury Crashes	Percent of Injury	In PDO Crashes	Percent of PDO
No Apparent Influence	223,343	87.50%	710	51.71%	64,880	88.10%	157,753	87.52%
Alcohol	4,740	1.86%	178	12.96%	1,853	2.52%	2,709	1.50%
Illegal Drugs	632	0.25%	78	5.68%	256	0.35%	298	0.17%
Medications	203	0.08%	8	0.58%	90	0.12%	105	0.06%
Marijuana	113	0.04%	30	2.18%	39	0.05%	44	0.02%
Illness or Physical Impairment	911	0.36%	9	0.66%	464	0.63%	438	0.24%
Fell Asleep or Fatigued	1,696	0.66%	12	0.87%	673	0.91%	1,011	0.56%
Other	1,187	0.47%	11	0.80%	322	0.44%	854	0.47%
Unknown	22,434	8.79%	337	24.54%	5,067	6.88%	17,030	9.45%
TOTAL	255,259	100.00%	1,373	100.00%	73,644	100.00%	180,242	100.00%

Section 5: – Motor Vehicle and Driver Descriptions

Table 5 – 13

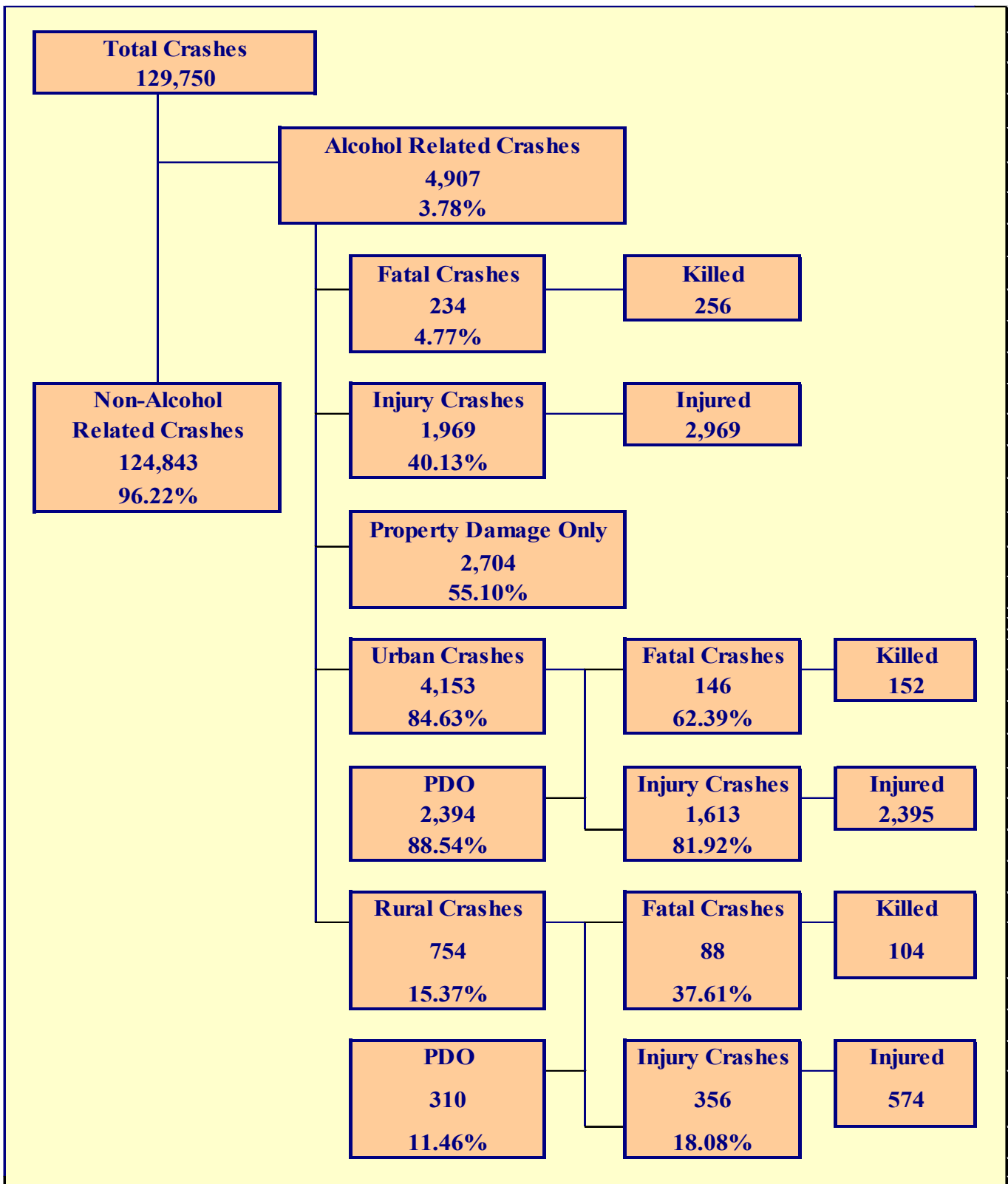
Distracted Driving Behavior

Type of Distraction	Number of Drivers							
	Total	Percent of Total	In Fatal Crashes	Percent of Fatal	In Injury Crashes	Percent of Injury	In PDO Crashes	Percent of PDO
Not Distracted	193,867	75.95%	592	43.12%	56,129	76.22%	137,146	76.09%
Talking on Hands Free Device	191	0.07%	0	0.00%	56	0.08%	135	0.07%
Talking on Hand Held Device	344	0.13%	3	0.22%	101	0.14%	240	0.13%
Passenger	746	0.29%	5	0.36%	247	0.34%	494	0.27%
Other Activity with an Electronic Device	1,392	0.55%	6	0.44%	429	0.58%	957	0.53%
Manually Operating an Electronic Device	801	0.31%	1	0.07%	253	0.34%	547	0.30%
Other Inside the Vehicle (eating, drinking, etc.)	2,933	1.15%	11	0.80%	990	1.34%	1,932	1.07%
Outside the Vehicle (includes unspecified distractions)	2,624	1.03%	12	0.87%	810	1.10%	1,802	1.00%
Distracted Unknown Reason	1,460	0.57%	9	0.66%	500	0.68%	951	0.53%
Unknown	50,901	19.94%	734	53.46%	14,129	19.19%	36,038	19.99%
TOTAL	255,259	100.00%	1,373	100.00%	73,644	100.00%	180,242	100.00%

Table 5 – 14

Secondary Crashes

Secondary Crash	Number of Crashes				Number of Persons	
	Total	Fatal	Injury	PDO	Killed	Injured
Yes	2,367	14	803	1,550	17	1,326
No	100,211	808	28,778	70,625	870	41,732
Unknown	27,172	89	7,345	19,738	95	10,751
TOTAL	129,750	911	36,926	91,913	982	53,809



Section 6: – Alcohol Related Crashes

The statistics in the Alcohol Related section represent those crashes where the investigating officer indicated that a driver, pedestrian, or pedalcyclist had been drinking an alcoholic beverage and may or may not be substantiated by a blood or breath test. No assumption is to be made that the person was legally intoxicated (blood alcohol content of 0.08% or higher) at the time of the crash.

**Table 6 – 1
Economic Loss Due to Alcohol Related Crashes in Arizona for 2019**

Fatalities	\$2,435,934,976
Suspected Serious Injuries	\$277,451,496
Suspected Minor Injuries	\$191,336,356
Possible Injuries	\$121,917,390
Property Damage Only	\$28,878,720
TOTAL	\$3,055,518,938

Refer to note on Page 4 for Economic Loss Estimates

**Table 6 – 2
Alcohol Related Crash History**

Year	Alcohol Related Crashes	Percent of all Crashes	Persons Killed	Percent of all Fatalities	Persons Injured	Percent of all Injuries
2015	5,016	4.29%	329	36.68%	3,285	6.10%
2016	4,961	3.90%	302	31.72%	3,347	5.88%
2017	4,917	3.85%	325	32.57%	3,177	5.68%
2018	4,702	3.68%	265	26.21%	3,001	5.59%
2019	4,907	3.78%	256	26.07%	2,969	5.52%

**Table 6 – 3
Manner of Collision in Alcohol Related Crashes**

Manner of Collision Type	Number of Crashes							
	Total	Percent of All Crashes	Fatal	Percent of Fatal Crashes	Injury	Percent of Injury Crashes	PDO	Percent of PDO Crashes
Angle	432	14.59%	14	10.14%	193	15.61%	225	14.19%
Left Turn	297	10.03%	7	5.07%	150	12.14%	140	8.83%
Rear End	1,240	41.89%	17	12.32%	503	40.70%	720	45.40%
Head-On	229	7.74%	18	13.04%	107	8.66%	104	6.56%
Sideswipe (same)	321	10.84%	2	1.45%	81	6.55%	238	15.01%
Sideswipe (opposite)	118	3.99%	1	0.72%	39	3.16%	78	4.92%
U-Turn	7	0.24%	1	0.72%	3	0.24%	3	0.19%
Other*	294	9.93%	75	54.35%	148	11.97%	71	4.48%
Unknown	22	0.74%	3	2.17%	12	0.97%	7	0.44%
TOTAL	2,960	100.00%	138	100.00%	1,236	100.00%	1,586	100.00%

Note: Includes only multi-vehicle alcohol related crashes

*Other includes pedestrian and pedalcyclist crashes

Section 6: – Alcohol Related Crashes

Table 6 – 4

Alcohol Related Crashes by First Harmful Event

First Harmful Event Type	Number of Crashes				Number of Persons	
	Total	Fatal	Injury	PDO	Killed	Injured
Collision with Motor Vehicle in Transport	2,312	64	980	1,268	82	1,747
Overturning	222	35	135	52	36	204
Collision with Pedestrian	180	67	113	0	67	126
Collision with Pedalcyclist	31	2	29	0	2	30
Collision with Animal	8	1	3	4	1	3
Collision with Fixed Object	1,693	56	600	1,037	59	724
Collision with Non-fixed Object*	400	6	90	304	6	108
Vehicle Fire or Explosion	3	0	0	3	0	0
Other Non-collision**	1	1	0	0	1	0
Unknown	57	2	19	36	2	27
TOTAL	4,907	234	1,969	2,704	256	2,969
*Includes Collision with Parked Vehicles, Trains, Railway Vehicles, and Work Zone Equipment						
**Includes Vehicle Immersion, Jackknife, and Cargo Loss or Shift						

Table 6 – 5

Alcohol Related Crashes by Vehicle Type

Motor Vehicle Type	Number of Vehicles				
	Total	Percent of Total	In Fatal Crashes	In Injury Crashes	In PDO Crashes
Passenger Cars (Sedans, Convertibles, etc.)	2,546	53.713%	56	972	1,518
Station Wagons	941	19.852%	30	367	544
Pickup Trucks	759	16.013%	38	296	425
Vans	52	1.097%	2	16	34
Truck Tractor (with or without Semi-Trailer)	2	0.042%	0	1	1
Concrete Mixer Trucks	0	0.000%	0	0	0
Dump Trucks	0	0.000%	0	0	0
Garbage Trucks	0	0.000%	0	0	0
Tanker Trucks	0	0.000%	0	0	0
Wrecker or Tow Trucks	0	0.000%	0	0	0
Other Truck Combinations	111	2.342%	0	31	80
School Bus	0	0.000%	0	0	0
Commercial or Non-Commercial Bus	0	0.000%	0	0	0
Motorcycle (two or three wheel)	132	2.785%	37	88	7
All Terrain Vehicle or Cycle	15	0.316%	7	6	2
Golf Carts	5	0.105%	1	3	1
Moped	2	0.042%	2	0	0
Recreational Vehicle	2	0.042%	0	0	2
Motor Home or House Car	2	0.042%	0	0	2
Fire Trucks	0	0.000%	0	0	0
Ambulances	0	0.000%	0	0	0
Other Types Of Vehicles	1	0.021%	0	0	1
Vehicle Type Unknown	170	3.586%	5	73	92
TOTAL	4,740	100.00%	178	1,853	2,709

Section 6: – Alcohol Related Crashes

Table 6 – 6

Lighting Conditions in Alcohol Related Crashes

Type of Lighting Conditions	Number of Crashes				Number of Persons	
	Total	Fatal	Injury	PDO	Killed	Injured
Daylight	1,472	58	608	806	69	944
Dawn	65	2	31	32	2	38
Dusk	136	3	63	70	3	109
Dark - Lighted	2,430	88	937	1,405	93	1,371
Dark - Not Lighted	728	64	306	358	68	465
Dark - Unknown Lighting	40	9	12	19	9	17
Unknown	36	10	12	14	12	25
TOTAL	4,907	234	1,969	2,704	256	2,969

Table 6 – 7

Road Surface Conditions in Alcohol Related Crashes

Type of Road Surface Condition	Number of Drivers				Number of Persons	
	Total	In Fatal Crashes	In Injury Crashes	In PDO Crashes	Killed	Injured
Dry	4,388	143	1,722	2,523	203	2,743
Wet	267	9	107	151	13	174
Snow/Slush	9	1	1	7	1	1
Ice/Frost	11	0	6	5	0	12
Water (standing or moving)	6	1	2	3	1	4
Mud, Dirt, Gravel, Sand	23	5	10	8	5	13
Other	2	0	0	2	0	2
Unknown	34	19	5	10	33	20
TOTAL	4,740	178	1,853	2,709	256	2,969

Table 6 – 8

Gender of Drivers Involved in Alcohol Related Crashes

Gender of Driver	Number of Drivers							
	Total	Percent of Total	In Fatal Crashes	Percent of Fatal	In Injury Crashes	Percent of Injury	In PDO Crashes	Percent of PDO
Male	3,429	72.34%	140	78.65%	1,355	73.12%	1,934	71.39%
Female	1,290	27.22%	36	20.22%	492	26.55%	762	28.13%
Unknown	21	0.44%	2	1.12%	6	0.32%	13	0.48%
TOTAL	4,740	100.00%	178	100.00%	1,853	100.00%	2,709	100.00%

In total crashes across the state, 53.62% of the drivers were males. When alcohol was involved, males accounted for 72.34% of the drivers.

Section 6: – Alcohol Related Crashes

**Table 6 – 9
Driver Involvement by Age in Alcohol Related Crashes**

Driver Age Group	Number of Drivers							
	Total	Percent of Total	In Fatal Crashes	Percent of Fatal	In Injury Crashes	Percent of Injury	In PDO Crashes	Percent of PDO
15 & Under	2	0.04%	0	0.00%	1	0.05%	1	0.04%
16	11	0.23%	0	0.00%	4	0.22%	7	0.26%
17	27	0.57%	2	1.12%	13	0.70%	12	0.44%
18	61	1.29%	1	0.56%	20	1.08%	40	1.48%
19	75	1.58%	1	0.56%	23	1.24%	51	1.88%
20	102	2.15%	3	1.69%	42	2.27%	57	2.10%
21	176	3.71%	7	3.93%	66	3.56%	103	3.80%
22	176	3.71%	5	2.81%	69	3.72%	102	3.77%
23	200	4.22%	3	1.69%	76	4.10%	121	4.47%
24	200	4.22%	8	4.49%	84	4.53%	108	3.99%
25-34	1,471	31.03%	49	27.53%	585	31.57%	837	30.90%
35-44	886	18.69%	39	21.91%	347	18.73%	500	18.46%
45-54	609	12.85%	27	15.17%	226	12.20%	356	13.14%
55-64	469	9.89%	18	10.11%	197	10.63%	254	9.38%
65-74	185	3.90%	13	7.30%	66	3.56%	106	3.91%
75 & Older	47	0.99%	0	0.00%	19	1.03%	28	1.03%
Unknown	43	0.91%	2	1.12%	15	0.81%	26	0.96%
TOTAL	4,740	100.00%	178	100.00%	1,853	100.00%	2,709	100.00%

**Table 6 – 10
When Alcohol Related Crashes Occurred in 2019**

Time of Day	Total	Weekday	Weekend*
Daytime**	1,429	900	529
Nighttime	3,478	1,407	2,071
Total	4,907	2,307	2,600
*Weekend begins at 6:00 p.m. on Friday and continues until 6:00 a.m. Monday. All other times and days are considered Weekdays.			
**Daytime refers to the hours between 6:00 a.m. and 6:00 p.m.			

**Table 6 – 11
Safety Device Usage for Drinking Drivers**

Severity of Injury	Safety Device Not Used	Lap Belt	Lap & Shoulder Belt	Protective Helmet	Other	Unknown	Totals
No Injury	108	27	2,070	2	1	866	3,074
Unknown Injury	7	0	38	0	0	128	173
Possible Injury	62	9	270	1	0	130	472
Suspected Minor Injury	134	1	351	12	0	149	647
Suspected Serious Injury	97	2	72	13	0	69	253
Fatal Injury	71	1	22	10	0	17	121
TOTALS	479	40	2,823	38	1	1,359	4,740

Section 6: – Alcohol Related Crashes

Table 6 – 12

Persons Killed and Injured in Alcohol Related Crashes

Age of Victim	Persons Killed			Persons Injured			
	Total	Male	Female	Total	Male	Female	Gender Unknown
0-4	1	0	1	41	21	20	0
5-9	1	0	1	38	20	18	0
10-14	0	0	0	44	22	22	0
15-19	7	5	2	184	101	83	0
20-24	29	20	9	471	313	158	0
25-34	55	36	19	808	525	283	0
35-44	60	45	15	504	327	177	0
45-54	47	31	16	371	242	129	0
55-64	34	28	6	297	189	108	0
65-74	20	15	5	129	86	43	0
75 & Older	2	1	1	48	25	23	0
Unknown	0	0	0	34	16	9	9
TOTAL	256	181	75	2,969	1,887	1,073	9

Table 6 – 13

Alcohol Related Crashes by County

County	Number of Crashes				Number of Persons	
	Total	Fatal	Injury	PDO	Killed	Injured
Apache	28	8	10	10	12	23
Cochise	48	8	18	22	8	22
Coconino	172	11	82	79	16	123
Gila	46	2	33	11	2	39
Graham	28	2	9	17	2	11
Greenlee	8	1	2	5	1	4
La Paz	22	1	13	8	1	21
Maricopa	3,224	119	1,242	1,863	122	1,859
Mohave	167	10	54	103	11	89
Navajo	100	5	44	51	5	69
Pima	516	40	221	255	47	343
Pinal	225	16	105	104	18	162
Santa Cruz	13	1	3	9	1	4
Yavapai	182	7	85	90	7	119
Yuma	128	3	48	77	3	81
TOTAL	4,907	234	1,969	2,704	256	2,969

Section 6: – Alcohol Related Crashes

Chart 6 – 1

All Alcohol Related Crashes vs. Fatal Alcohol Related Crashes by Day of Week

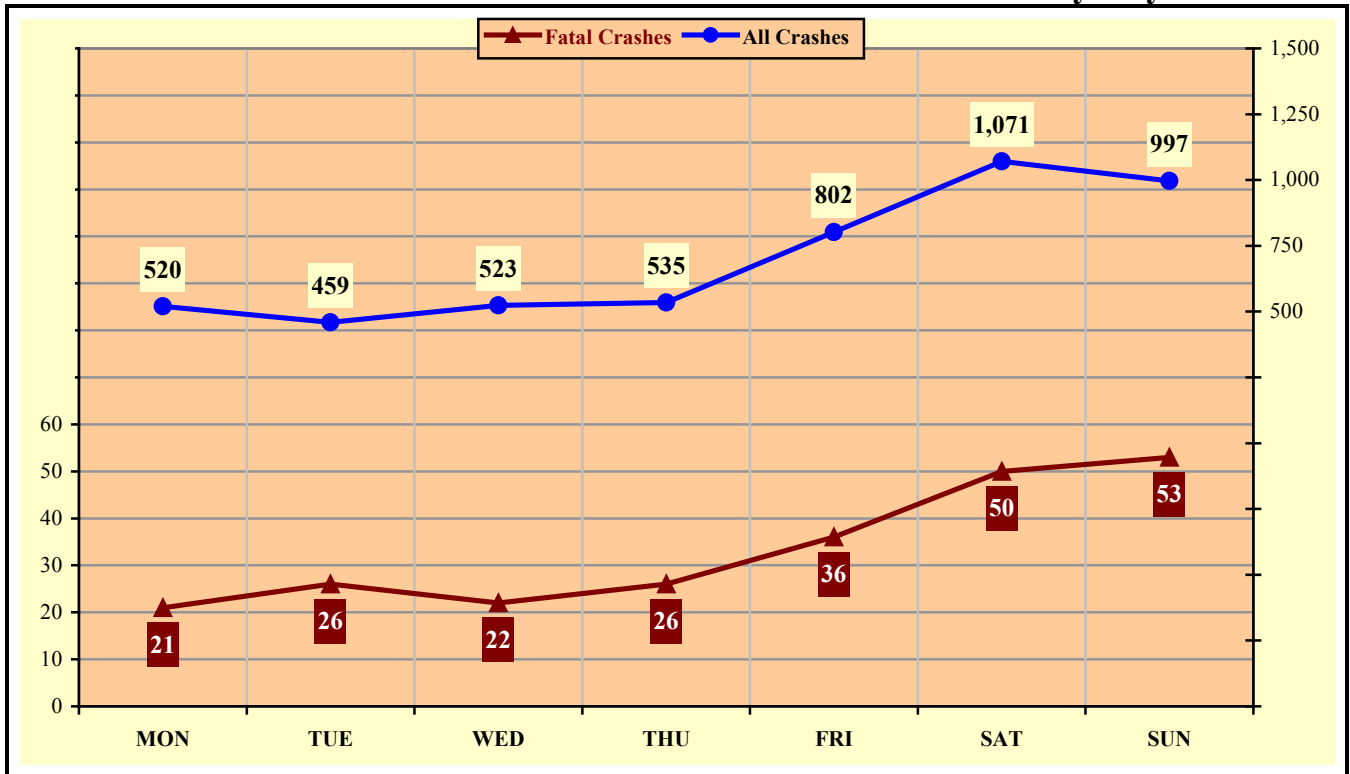
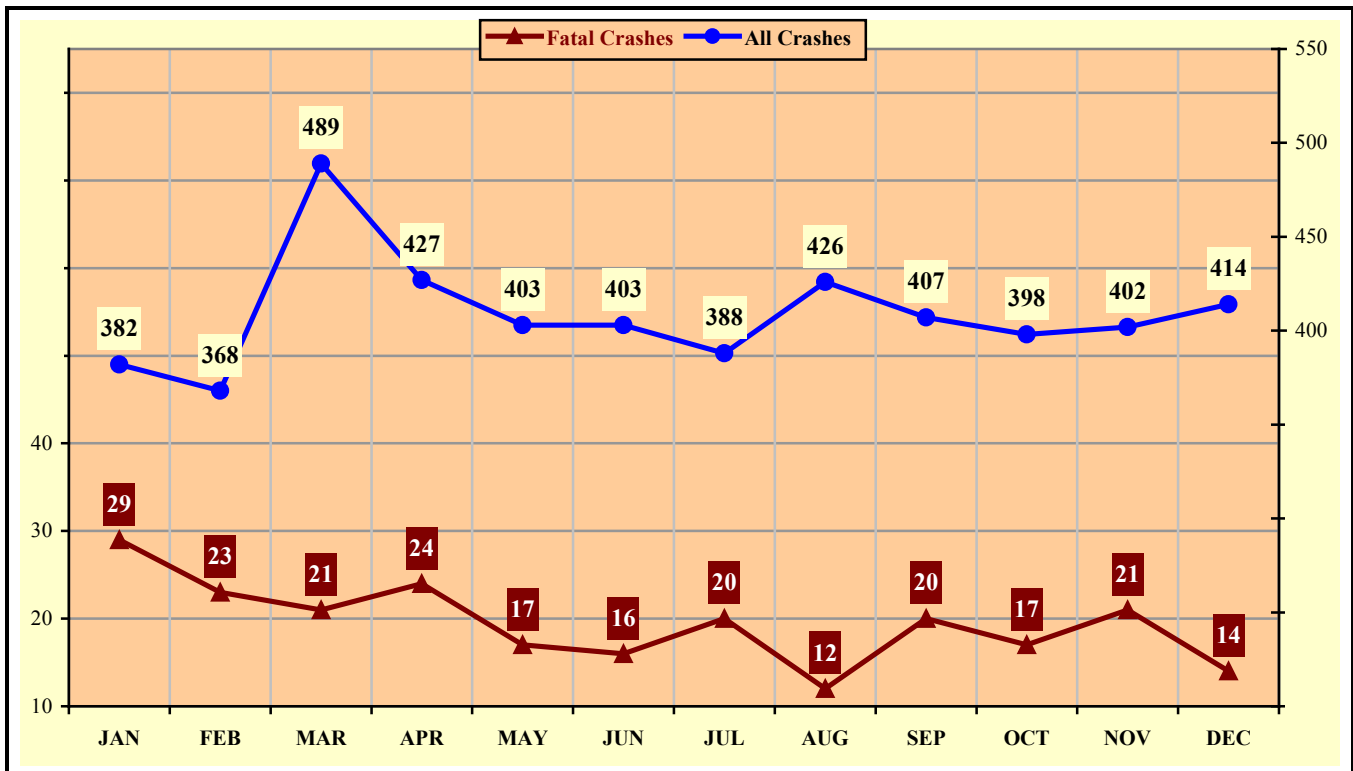


Chart 6 – 2

All Alcohol Related Crashes vs. Fatal Alcohol Related Crashes by Month



Section 6: – Alcohol Related Crashes

Chart 6 – 3

All Alcohol Related Crashes vs. Fatal Alcohol Related Crashes - Weekdays

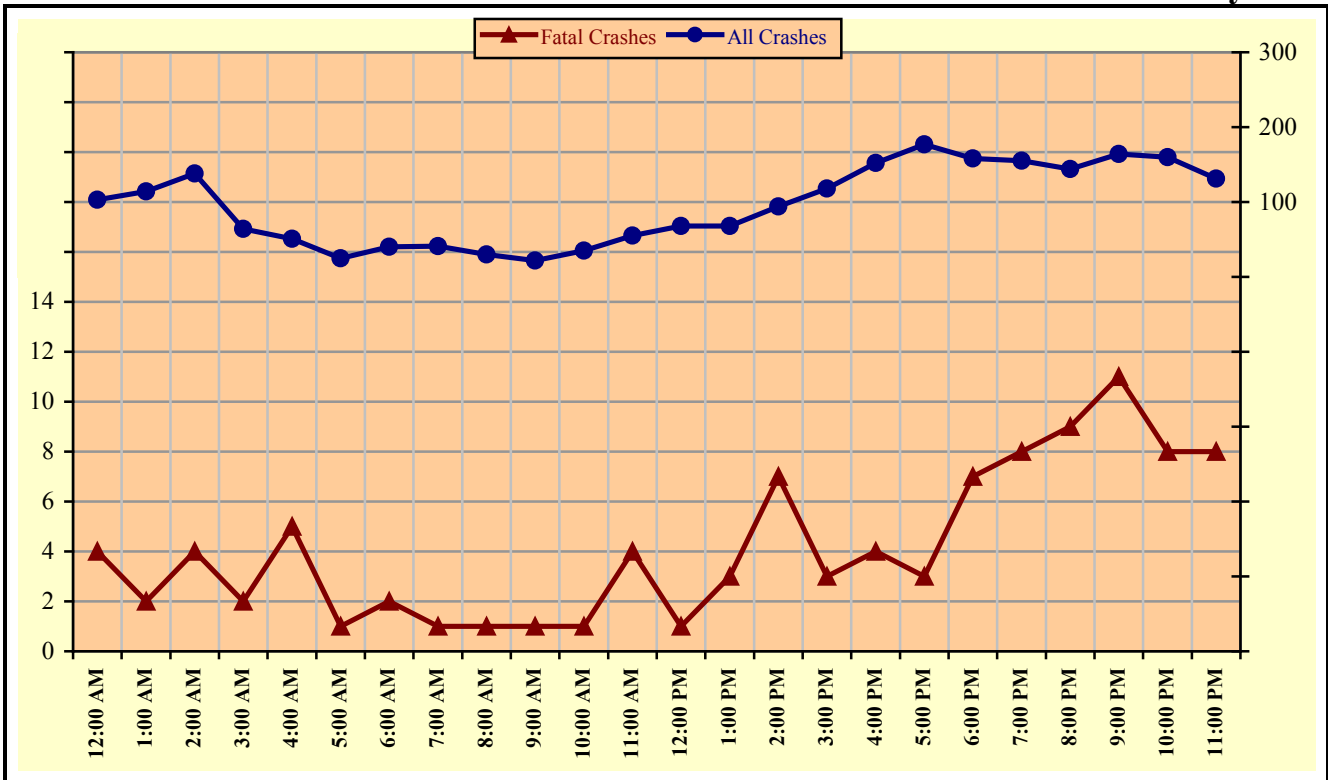
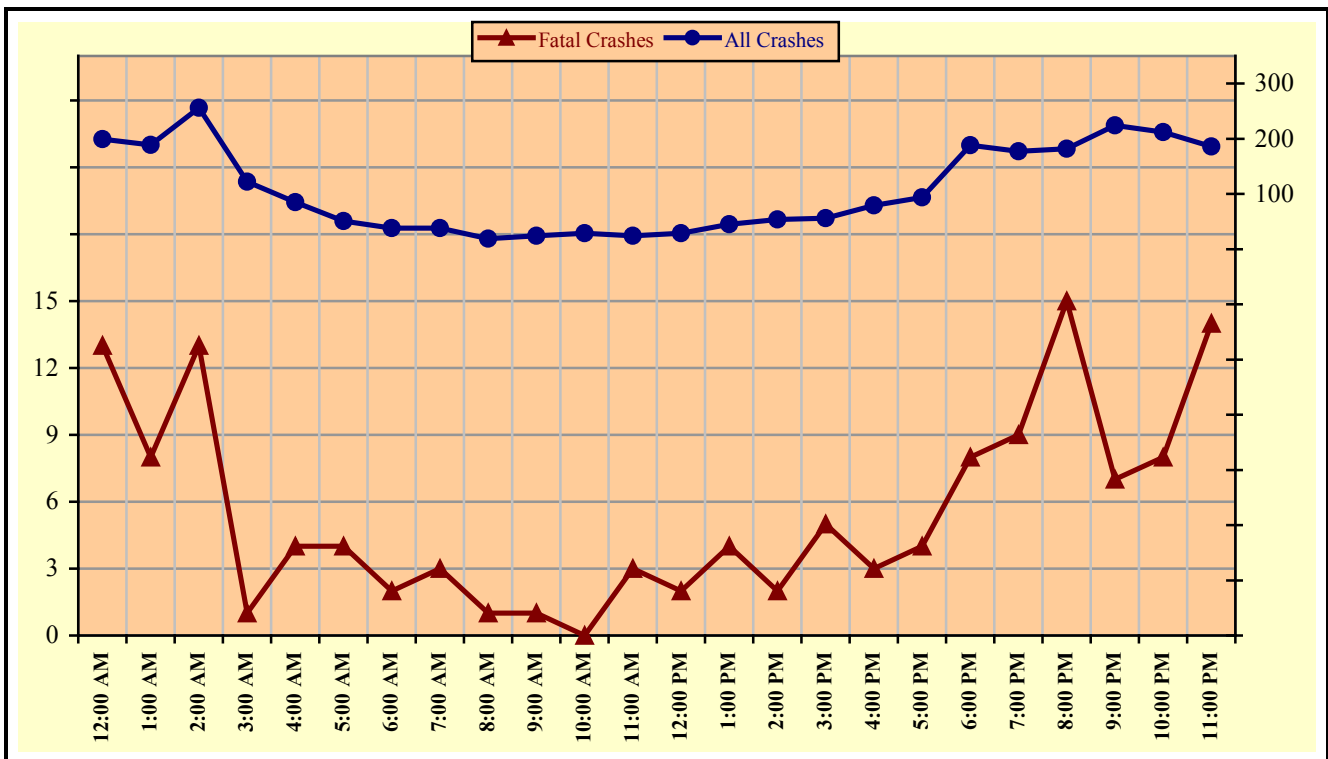


Chart 6 – 4

All Alcohol Related Crashes vs. Fatal Alcohol Related Crashes - Weekends



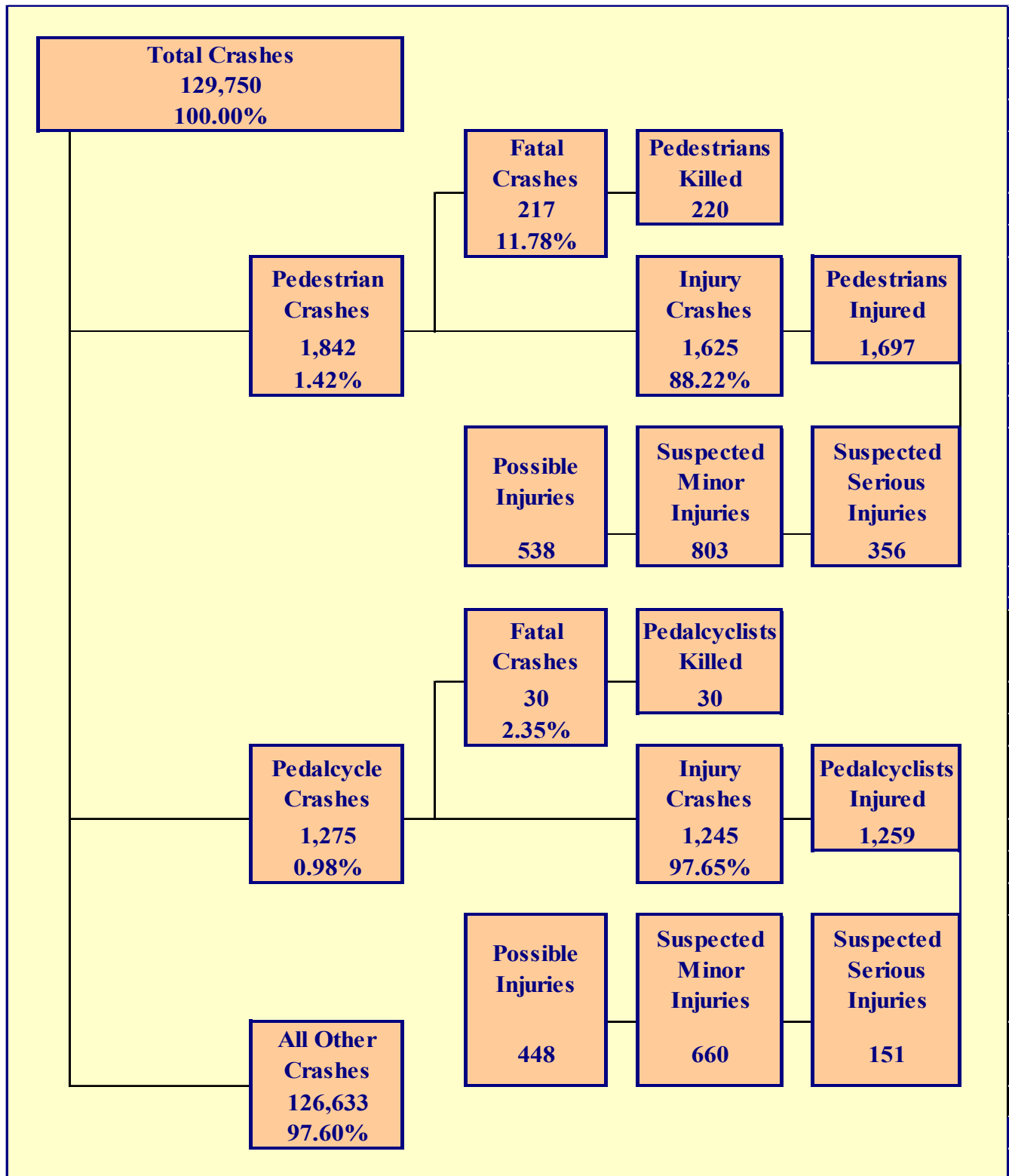
Section 6: – Alcohol Related Crashes

Table 6 – 14

Alcohol Related Crashes by Hour and Day of Week

Hour Beginning	Total Crashes		Monday		Tuesday		Wednesday		Thursday		Friday		Saturday		Sunday		Weekdays		Weekends	
	All	Fatal	All	Fatal	All	Fatal	All	Fatal	All	Fatal	All	Fatal	All	Fatal	All	Fatal	All	Fatal	All	Fatal
12:00 AM	302	17	35	3	24	1	21	0	23	1	35	2	74	4	90	6	103	4	199	13
1:00 AM	303	10	26	1	22	0	29	0	24	2	39	0	80	3	83	4	114	2	189	8
2:00 AM	394	17	28	0	25	0	19	0	38	0	56	4	113	7	115	6	138	4	256	13
3:00 AM	186	3	14	0	15	0	14	0	7	1	28	1	56	0	52	1	64	2	122	1
4:00 AM	136	9	12	0	12	1	15	1	8	1	16	2	39	3	34	1	51	5	85	4
5:00 AM	76	5	7	1	6	1	5	0	7	0	7	0	24	1	20	2	25	1	51	4
6:00 AM	78	4	9	0	7	1	8	0	8	1	8	0	19	0	19	2	40	2	38	2
7:00 AM	79	4	11	0	8	0	3	0	8	1	11	0	13	0	25	3	41	1	38	3
8:00 AM	49	2	4	0	4	0	7	0	11	1	4	0	12	1	7	0	30	1	19	1
9:00 AM	46	2	4	0	7	1	3	0	2	0	6	0	10	1	14	0	22	1	24	1
10:00 AM	64	1	11	0	7	0	4	1	5	0	8	0	12	0	17	0	35	1	29	0
11:00 AM	79	7	10	2	5	1	10	0	11	1	19	0	9	0	15	3	55	4	24	3
12:00 PM	97	3	13	0	13	0	19	0	12	0	11	1	17	0	12	2	68	1	29	2
1:00 PM	113	7	17	0	16	3	17	0	8	0	10	0	19	1	26	3	68	3	45	4
2:00 PM	148	9	19	1	15	2	20	2	16	2	24	0	25	1	29	1	94	7	54	2
3:00 PM	174	8	17	1	29	0	17	0	24	2	31	0	30	2	26	3	118	3	56	5
4:00 PM	231	7	30	2	25	0	35	0	31	2	31	0	34	1	45	2	152	4	79	3
5:00 PM	271	7	38	1	28	0	27	2	36	0	48	0	53	3	41	1	177	3	94	4
6:00 PM	346	15	35	2	32	1	45	2	46	2	60	2	73	4	55	2	158	7	188	8
7:00 PM	332	17	32	1	37	2	46	3	40	2	53	2	71	3	53	4	155	8	177	9
8:00 PM	326	24	38	2	28	3	47	3	31	1	58	5	73	5	51	5	144	9	182	15
9:00 PM	388	18	47	2	27	5	41	4	49	0	87	5	65	2	72	0	164	11	224	7
10:00 PM	372	16	39	1	31	1	35	2	55	4	67	5	83	3	62	0	160	8	212	8
11:00 PM	317	22	24	1	36	3	36	2	35	2	85	7	67	5	34	2	131	8	186	14
TOTAL	4,907	234	520	21	459	26	523	22	535	26	802	36	1,071	50	997	53	2,307	100	2,600	134

Crashes during Weekends accounted for 52.99% of all Alcohol Related crashes and 57.26% of Alcohol Related Fatal Crashes.



Section 7: – Pedestrian and Pedalcyclist Crashes

**Table 7 – 1
Pedestrians Killed and Injured By Age and Gender**

Age Group	Pedestrians Killed			Pedestrians Injured		
	Total	Male	Female	Total	Male	Female
0-4	0	0	0	29	15	14
5-9	3	3	0	42	28	14
10-14	5	4	1	103	66	37
15-19	11	6	5	186	113	73
20-24	10	8	2	176	110	66
25-34	29	21	8	325	217	108
35-44	39	28	11	230	153	77
45-54	33	18	15	205	136	69
55-64	47	36	11	205	128	77
65-74	25	20	5	110	60	50
75 & Older	16	12	4	56	41	15
Unknown	2	1	1	30	25	5
TOTAL	220	157	63	1,697	1,092	605

**Table 7 – 2
Pedestrian Crashes by Geographic Location**

Category	Total	Urban	Percent of Total	Rural	Percent of Total
Total Crashes	1,842	1,767	95.93%	75	4.07%
Fatal Crashes	217	185	85.25%	32	14.75%
Injury Crashes	1,625	1,582	97.35%	43	2.65%
Pedestrians Killed	220	188	85.45%	32	14.55%
Pedestrians Injured	1,697	1,651	97.29%	46	2.71%

**Table 7 – 3
Pedestrian Crash History**

Year	Pedestrian Crashes	Percent of all Crashes	Pedestrians Killed	Percent of all Fatalities	Pedestrians Injured	Percent of all Injuries
2015	1,412	1.21%	163	18.17%	1,248	2.32%
2016	1,651	1.30%	193	20.27%	1,466	2.57%
2017	1,711	1.34%	226	22.65%	1,523	2.73%
2018	1,776	1.39%	245	24.23%	1,546	2.88%
2019	1,842	1.42%	220	22.40%	1,697	3.15%

Section 7: – Pedestrian and Pedalcyclist Crashes

**Table 7 – 4
Pedestrians Killed by Age and Action**

Pedestrian Action	Total	Age Group of Pedestrian											
		0-4	5-9	10-14	15-19	20-24	25-34	35-44	45-54	55-64	65-74	75 & Older	Unknown
Crossing Road	132	0	2	4	8	7	15	16	26	25	16	12	1
Walking With Traffic	14	0	0	0	1	0	0	5	0	5	2	1	0
Walking Against Traffic	6	0	0	0	0	0	2	1	1	0	1	1	0
Standing	12	0	1	0	1	1	3	1	0	4	1	0	0
Lying	3	0	0	0	1	0	0	1	1	0	0	0	0
Getting on/off Vehicle	0	0	0	0	0	0	0	0	0	0	0	0	0
Working on/pushing Veh	0	0	0	0	0	0	0	0	0	0	0	0	0
Working on Road	0	0	0	0	0	0	0	0	0	0	0	0	0
Other	13	0	0	0	0	1	2	5	1	4	0	0	0
Unknown	40	0	0	1	0	1	7	10	4	9	5	2	1
TOTAL	220	0	3	5	11	10	29	39	33	47	25	16	2

**Table 7 – 5
Pedestrians Injured by Age and Action**

Pedestrian Action	Total	Age Group of Pedestrian											
		0-4	5-9	10-14	15-19	20-24	25-34	35-44	45-54	55-64	65-74	75 & Older	Unknown
Crossing Road	1,018	18	30	77	128	102	182	132	119	119	63	33	15
Walking With Traffic	129	2	2	5	13	15	30	14	15	15	10	8	0
Walking Against Traffic	133	0	1	4	9	12	33	16	19	20	12	6	1
Standing	77	1	1	2	5	7	13	11	15	11	5	4	2
Lying	19	0	0	0	1	2	4	5	4	1	1	0	1
Getting on/off Vehicle	13	2	0	0	0	1	6	1	2	1	0	0	0
Working on/pushing Veh	5	0	0	0	0	2	0	2	0	1	0	0	0
Working on Road	11	0	0	0	1	2	1	2	1	3	1	0	0
Other	195	4	4	9	19	27	38	30	21	21	13	4	5
Unknown	97	2	4	6	10	6	18	17	9	13	5	1	6
TOTAL	1,697	29	42	103	186	176	325	230	205	205	110	56	30

**Table 7 – 6
Pedestrian Physical Condition in Motor Vehicle Crashes**

Type of Condition	Number of Pedestrians					
	Total	Percent of Total	In Fatal Crashes	Percent of Fatal	In Injury Crashes	Percent of Injury
No Apparent Influence	1,277	66.61%	35	14.89%	1,242	73.84%
Alcohol	171	8.92%	60	25.53%	111	6.60%
Illegal Drugs	46	2.40%	35	14.89%	11	0.65%
Medications	1	0.05%	1	0.43%	0	0.00%
Marijuana	7	0.37%	6	2.55%	1	0.06%
Illness or Physical Impairment	6	0.31%	0	0.00%	6	0.36%
Fell Asleep or Fatigued	3	0.16%	0	0.00%	3	0.18%
Other	11	0.57%	0	0.00%	11	0.65%
Unknown	395	20.61%	98	41.70%	297	17.66%
TOTAL	1,917	100.00%	235	100.00%	1,682	100.00%

Section 7: – Pedestrian and Pedalcyclist Crashes

Table 7 – 7

Lighting Conditions in Pedestrian Crashes

Type of Lighting Conditions	Number of Crashes		
	Total	Fatal	Injury
Daylight	934	38	896
Dawn	33	5	28
Dusk	65	5	60
Dark - Lighted	641	103	538
Dark - Not Lighted	130	41	89
Dark - Unknown Lighting	11	5	6
Unknown	28	20	8
TOTAL	1,842	217	1,625

Table 7 – 8

Weather Conditions in Pedestrian Crashes

Type of Weather Conditions	Number of Crashes		
	Total	Fatal	Injury
Clear	1,555	135	1,420
Cloudy	125	14	111
Sleet/Hail	1	0	1
Rain	87	11	76
Snow or Blowing Snow	0	0	0
Severe Crosswinds	0	0	0
Blowing Sand, Soil, Dirt	0	0	0
Fog, Smog, Smoke	3	0	3
Other	1	0	1
Unknown	70	57	13
TOTAL	1,842	217	1,625

Table 7 – 9

Pedalcyclists Killed and Injured by Age and Gender

Age Group	Pedalcyclists Killed			Pedalcyclists Injured		
	Total	Male	Female	Total	Male	Female
0-4	1	1	0	1	1	0
5-9	0	0	0	18	12	6
10-14	1	1	0	101	75	26
15-19	2	0	2	143	111	32
20-24	2	2	0	142	99	43
25-34	3	3	0	218	167	51
35-44	2	1	1	163	117	46
45-54	7	5	2	165	128	37
55-64	4	4	0	165	129	36
65-74	7	7	0	88	76	12
75 & Older	1	1	0	33	29	4
Unknown	0	0	0	22	20	2
TOTAL	30	25	5	1,259	964	295

Section 7: – Pedestrian and Pedalcyclist Crashes

Table 7 – 10

Pedalcycle Crashes by Geographic Location

Category	Total	Urban	Percent of Total	Rural	Percent of Total
Total Crashes	1,275	1,210	94.90%	65	5.10%
Fatal Crashes	30	25	83.33%	5	16.67%
Injury Crashes	1,245	1,185	95.18%	60	4.82%
Pedalcyclists Killed	30	25	83.33%	5	16.67%
Pedalcyclists Injured	1,259	1,196	95.00%	63	5.00%

Table 7 – 11

Pedalcycle Crash History

Year	Pedalcycle Crashes	Percent of all Crashes	Pedalcyclists Killed	Percent of all Fatalities	Pedalcyclists Injured	Percent of all Injuries
2015	1,436	1.23%	28	3.12%	1,279	2.37%
2016	1,482	1.16%	31	3.26%	1,353	2.38%
2017	1,498	1.17%	32	3.21%	1,380	2.47%
2018	1,287	1.01%	24	2.37%	1,190	2.22%
2019	1,275	0.98%	30	3.05%	1,259	2.34%

Table 7 – 12

Lighting Conditions in Pedalcyclist Crashes

Type of Lighting Conditions	Number of Crashes		
	Total	Fatal	Injury
Daylight	975	17	958
Dawn	24	0	24
Dusk	31	1	30
Dark - Lighted	211	7	204
Dark - Not Lighted	22	2	20
Dark - Unknown Lighting	4	2	2
Unknown	8	1	7
TOTAL	1,275	30	1,245

Table 7 – 13

Weather Conditions in Pedalcyclist Crashes

Type of Weather Conditions	Number of Crashes		
	Total	Fatal	Injury
Clear	1,124	24	1,100
Cloudy	109	2	107
Sleet/Hail	1	0	1
Rain	22	0	22
Snow or Blowing Snow	0	0	0
Severe Crosswinds	0	0	0
Blowing Sand, Soil, Dirt	1	0	1
Fog, Smog, Smoke	0	0	0
Other	0	0	0
Unknown	18	4	14
TOTAL	1,275	30	1,245

Section 7: – Pedestrian and Pedalcyclist Crashes

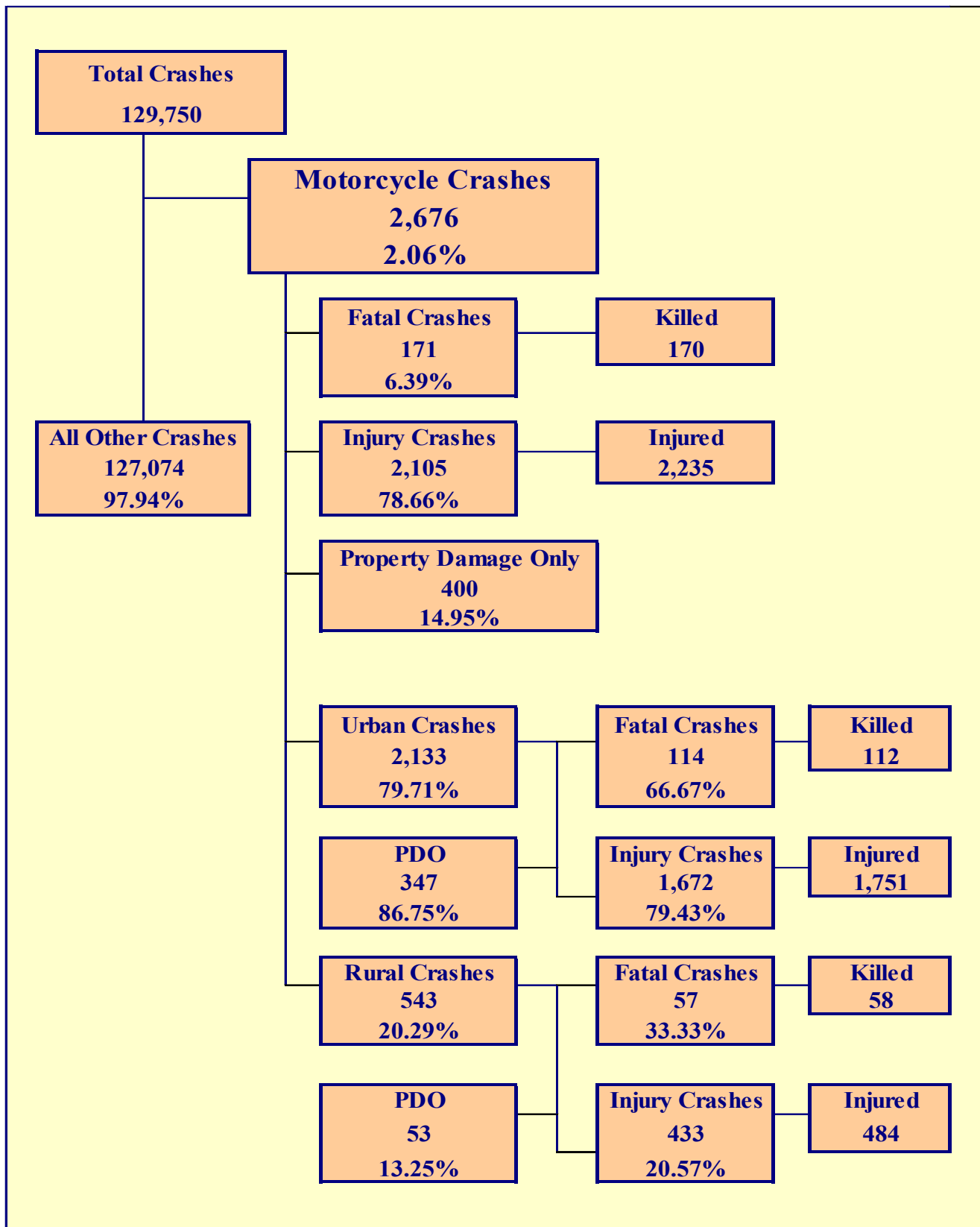
Table 7 – 14
Pedestrian Crashes by County

County	Number of Crashes			Number of Pedestrians	
	Total	Fatal	Injury	Killed	Injured
Apache	3	2	1	2	1
Cochise	8	2	6	2	6
Coconino	43	8	35	8	36
Gila	12	4	8	4	9
Graham	4	1	3	1	3
Greenlee	0	0	0	0	0
La Paz	2	1	1	1	1
Maricopa	1,370	132	1,238	134	1,291
Mohave	26	6	20	6	21
Navajo	13	3	10	3	11
Pima	260	44	216	45	224
Pinal	31	8	23	8	25
Santa Cruz	1	1	0	1	0
Yavapai	31	1	30	1	32
Yuma	38	4	34	4	37
TOTAL	1,842	217	1,625	220	1,697

Maricopa and Pima Counties accounted for 81.36% of pedestrian fatalities.

Table 7 – 15
Pedalcyclist Crashes by County

County	Number of Crashes			Number of Pedalcyclists	
	Total	Fatal	Injury	Killed	Injured
Apache	0	0	0	0	0
Cochise	6	1	5	1	5
Coconino	38	1	37	1	37
Gila	5	0	5	0	5
Graham	3	0	3	0	3
Greenlee	0	0	0	0	0
La Paz	1	0	1	0	1
Maricopa	940	19	921	19	931
Mohave	13	0	13	0	13
Navajo	2	0	2	0	2
Pima	172	6	166	6	170
Pinal	28	0	28	0	28
Santa Cruz	2	1	1	1	1
Yavapai	19	1	18	1	18
Yuma	46	1	45	1	45
TOTAL	1,275	30	1,245	30	1,259



Section 8: – Motorcycle (MC) Crashes

Chart 8 – 1
MC Fatalities by Year

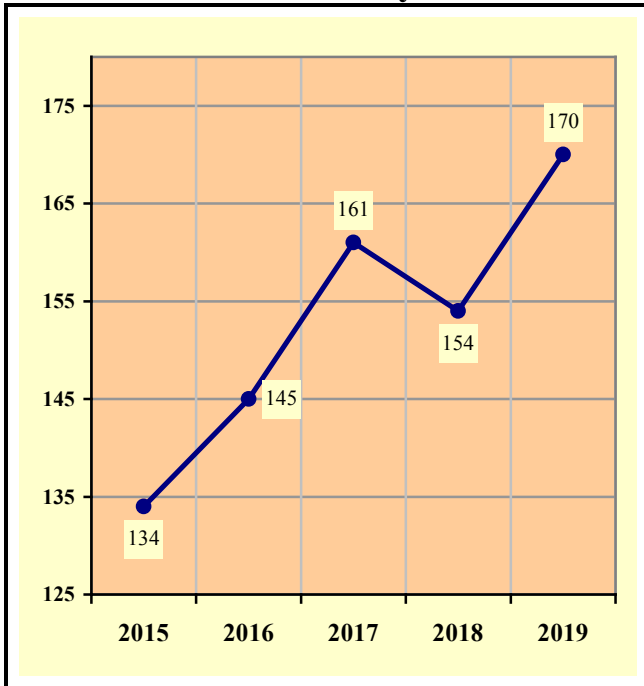
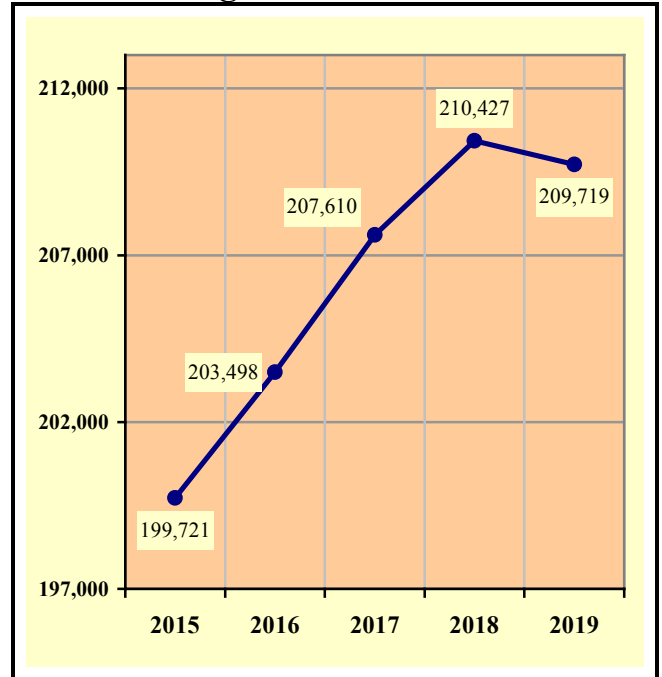


Chart 8 – 2
MC Registrations in Arizona



Total Point-in-Time of Registered Motorcycles at the end of
Calendar year 2019.
(Source: MVD - MV988 MV630419 Currently Registered Vehicles by County
Listing (motorcycle sub category), reports dated 12/31/19.)

Chart 8 – 3
Fatality Rate per Registered MC

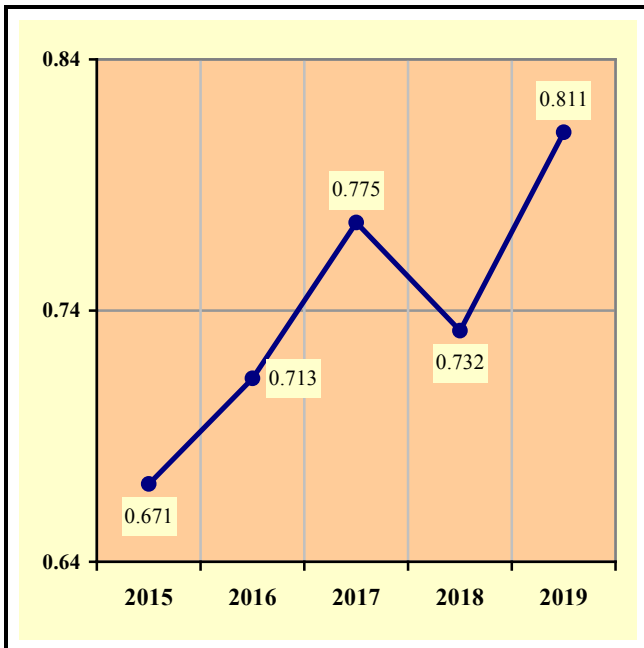
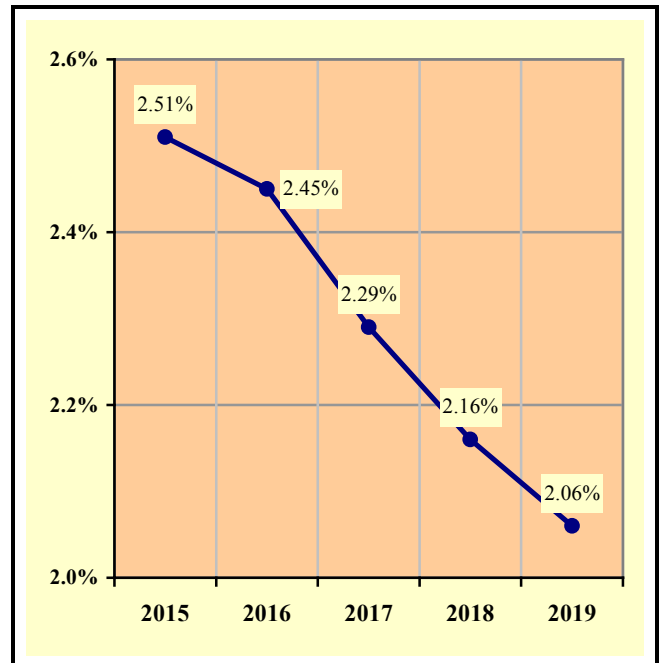


Chart 8 – 4
Percent of MC Crashes to All Crashes



Section 8: – Motorcycle (MC) Crashes

Table 8 – 1
MC Crashes by First Harmful Event

First Harmful Event Type	Number of Crashes			
	Total	Fatal	Injury	PDO
Collision with Motor Vehicle in Transport	1,598	90	1,197	311
Overturning	602	23	535	44
Collision with Pedestrian	11	2	9	0
Collision with Pedalcyclist	6	1	5	0
Collision with Animal	28	2	21	5
Collision with Fixed Object	313	49	249	15
Collision with Non-fixed Object*	71	1	49	21
Vehicle Fire or Explosion	1	0	0	1
Other Non-collision**	3	0	3	0
Unknown	43	3	37	3
TOTAL	2,676	171	2,105	400
*Includes Collision with Parked Vehicles, Trains, Railway Vehicles, and Work Zone Equipment				
**Includes Vehicle Immersion, Jackknife, and Cargo Loss or Shift				

Table 8 – 2
Lighting Conditions in MC Crashes

Type of Lighting Conditions	Number of Crashes			
	Total	Fatal	Injury	PDO
Daylight	1,846	102	1,474	270
Dawn	59	2	46	11
Dusk	77	7	60	10
Dark - Lighted	535	37	415	83
Dark - Not Lighted	136	17	100	19
Dark - Unknown Lighting	7	2	1	4
Unknown	16	4	9	3
TOTAL	2,676	171	2,105	400

Table 8 – 3
Road Surface Conditions in MC Crashes

Type of Road Surface Condition	Number of Operators			
	Total	In Fatal Crashes	In Injury Crashes	In PDO Crashes
Dry	2,603	153	2,062	388
Wet	58	4	48	6
Snow/Slush	2	0	1	1
Ice/Frost	3	0	3	0
Water (standing or moving)	1	0	1	0
Mud, Dirt, Gravel, Sand	28	1	26	1
Other	7	1	4	2
Unknown	26	15	4	7
TOTAL	2,728	174	2,149	405

Section 8: – Motorcycle (MC) Crashes

Table 8 – 4

MC Crashes by Geographic Location

Category	Total	Urban	Percent of Total	Rural	Percent of Total
Total Crashes	2,676	2,133	79.71%	543	20.29%
Fatal Crashes	171	114	66.67%	57	33.33%
Injury Crashes	2,105	1,672	79.43%	433	20.57%
PDO Crashes	400	347	86.75%	53	13.25%
Persons Killed	170	112	65.88%	58	34.12%
Persons Injured	2,235	1,751	78.34%	484	21.66%

Table 8 – 5

Operator Involvement by Age in MC Crashes

Operator Age Group	Number of Operators							
	Total	Percent of Total	In Fatal Crashes	Percent of Fatal	In Injury Crashes	Percent of Injury	In PDO Crashes	Percent of PDO
15 & Under	11	0.40%	0	0.00%	9	0.42%	2	0.49%
16	7	0.26%	0	0.00%	6	0.28%	1	0.25%
17	18	0.66%	0	0.00%	16	0.74%	2	0.49%
18	38	1.39%	3	1.72%	32	1.49%	3	0.74%
19	74	2.71%	1	0.57%	61	2.84%	12	2.96%
20	82	3.01%	4	2.30%	66	3.07%	12	2.96%
21	74	2.71%	5	2.87%	57	2.65%	12	2.96%
22	89	3.26%	1	0.57%	70	3.26%	18	4.44%
23	83	3.04%	5	2.87%	64	2.98%	14	3.46%
24	75	2.75%	3	1.72%	64	2.98%	8	1.98%
25-34	609	22.32%	33	18.97%	491	22.85%	85	20.99%
35-44	429	15.73%	29	16.67%	346	16.10%	54	13.33%
45-54	444	16.28%	27	15.52%	358	16.66%	59	14.57%
55-64	384	14.08%	35	20.11%	303	14.10%	46	11.36%
65-74	208	7.62%	21	12.07%	164	7.63%	23	5.68%
75 & Older	39	1.43%	7	4.02%	28	1.30%	4	0.99%
Unknown	64	2.35%	0	0.00%	14	0.65%	50	12.35%
TOTAL	2,728	100.00%	174	100.00%	2,149	100.00%	405	100.00%

Table 8 – 6

MC Operator Physical Condition

Type of Condition	Number of Operators							
	Total	Percent of Total	In Fatal Crashes	Percent of Fatal	In Injury Crashes	Percent of Injury	In PDO Crashes	Percent of PDO
No Apparent Influence	2,286	83.80%	60	34.48%	1,884	87.67%	342	84.44%
Alcohol	132	4.84%	37	21.26%	88	4.09%	7	1.73%
Illegal Drugs	31	1.14%	26	14.94%	5	0.23%	0	0.00%
Medications	1	0.04%	1	0.57%	0	0.00%	0	0.00%
Marijuana	12	0.44%	11	6.32%	1	0.05%	0	0.00%
Illness or Physical Impairment	6	0.22%	1	0.57%	4	0.19%	1	0.25%
Fell Asleep or Fatigued	3	0.11%	0	0.00%	3	0.14%	0	0.00%
Other	10	0.37%	1	0.57%	6	0.28%	3	0.74%
Unknown	247	9.05%	37	21.26%	158	7.35%	52	12.84%
TOTAL	2,728	100.00%	174	100.00%	2,149	100.00%	405	100.00%

Section 8: – Motorcycle (MC) Crashes

Table 8 – 7

MC Operator’s Helmet Use

Severity of Injury	Helmet Used	Percent of Total	Helmet Not Used	Percent of Total	Unknown	Percent of Total	Total	Percent of Total
No Injury	198	14.55%	42	7.57%	171	21.06%	411	15.07%
Unknown Injury	17	1.25%	5	0.90%	26	3.20%	48	1.76%
Possible Injury	218	16.02%	79	14.23%	155	19.09%	452	16.57%
Suspected Minor Injury	587	43.13%	197	35.50%	316	38.92%	1,100	40.32%
Suspected Serious Injury	260	19.10%	163	29.37%	130	16.01%	553	20.27%
Fatal Injury	81	5.95%	69	12.43%	14	1.72%	164	6.01%
TOTALS	1,361	100.00%	555	100.00%	812	100.00%	2,728	100.00%

Table 8 – 8

MC Passenger’s Helmet Use

Severity of Injury	Helmet Used	Percent of Total	Helmet Not Used	Percent of Total	Unknown	Percent of Total	Total	Percent of Total
No Injury	12	16.90%	2	4.35%	10	21.74%	24	14.72%
Unknown Injury	1	1.41%	0	0.00%	2	4.35%	3	1.84%
Possible Injury	11	15.49%	7	15.22%	10	21.74%	28	17.18%
Suspected Minor Injury	35	49.30%	16	34.78%	16	34.78%	67	41.10%
Suspected Serious Injury	12	16.90%	16	34.78%	7	15.22%	35	21.47%
Fatal Injury	0	0.00%	5	10.87%	1	2.17%	6	3.68%
TOTALS	71	100.00%	46	100.00%	46	100.00%	163	100.00%

Table 8 – 9

Helmet Use by Gender

Gender	Number of Operators and Passengers							
	Helmet Used	Percent of Helmet Used	Helmet Not Used	Percent of Helmet Not Used	Helmet Use Unknown	Percent of Unknown	Total	Percent of Total
Male	1,283	89.59%	528	87.85%	733	85.43%	2,544	88.00%
Female	145	10.13%	73	12.15%	87	10.14%	305	10.55%
Unknown	4	0.28%	0	0.00%	38	4.43%	42	1.45%
TOTAL	1,432	100.00%	601	100.00%	858	100.00%	2,891	100.00%

Section 8: – Motorcycle (MC) Crashes

Table 8 – 10

MC Operators and Passengers Killed and Injured

Age of Victim	Persons Killed			Persons Injured			
	Total	Male	Female	Total	Male	Female	Gender Unknown
0-4	0	0	0	0	0	0	0
5-9	0	0	0	1	0	1	0
10-14	0	0	0	7	6	1	0
15-19	5	4	1	125	113	12	0
20-24	18	17	1	328	301	27	0
25-34	30	29	1	503	462	41	0
35-44	30	27	3	367	311	56	0
45-54	27	24	3	373	328	45	0
55-64	32	30	2	320	271	49	0
65-74	21	21	0	168	156	12	0
75 & Older	7	7	0	31	26	5	0
Unknown	0	0	0	12	10	0	2
TOTAL	170	159	11	2,235	1,984	249	2

Table 8 – 11

MC Operator Violations

Type of Violation or Behavior	Number of Operators							
	Total	Percent of Total	In Fatal Crashes	Percent of Fatal	In Injury Crashes	Percent of Injury	In PDO Crashes	Percent of PDO
No Improper Action	1,273	46.66%	41	23.56%	1,037	48.26%	195	48.15%
Speed too Fast for Conditions	644	23.61%	46	26.44%	522	24.29%	76	18.77%
Exceeded Lawful Speed	63	2.31%	15	8.62%	44	2.05%	4	0.99%
Failed to Yield Right-Of-Way	66	2.42%	1	0.57%	48	2.23%	17	4.20%
Followed Too Closely	86	3.15%	1	0.57%	63	2.93%	22	5.43%
Ran Stop Sign	20	0.73%	5	2.87%	14	0.65%	1	0.25%
Disregarded Traffic Signal	29	1.06%	2	1.15%	24	1.12%	3	0.74%
Made Improper Turn	32	1.17%	2	1.15%	25	1.16%	5	1.23%
Drove in Opposing Lane	6	0.22%	0	0.00%	5	0.23%	1	0.25%
Drove Left of Center Line	13	0.48%	2	1.15%	10	0.47%	1	0.25%
Passed in No-Passing Zone	5	0.18%	2	1.15%	2	0.09%	1	0.25%
Unsafe Lane Change	55	2.02%	3	1.72%	42	1.95%	10	2.47%
Failed to Keep in Proper Lane	76	2.79%	10	5.75%	56	2.61%	10	2.47%
Crossed Median	1	0.04%	0	0.00%	1	0.05%	0	0.00%
Aggressive Driving	8	0.29%	0	0.00%	6	0.28%	2	0.49%
Wrong Way Driving	1	0.04%	0	0.00%	0	0.00%	1	0.25%
Other	111	4.07%	6	3.45%	86	4.00%	19	4.69%
Unknown	239	8.76%	38	21.84%	164	7.63%	37	9.14%
TOTAL	2,728	100.00%	174	100.00%	2,149	100.00%	405	100.00%

Section 8: – Motorcycle (MC) Crashes

Chart 8 – 5

All MC Crashes vs. Fatal MC Crashes by Time of Day - Weekdays

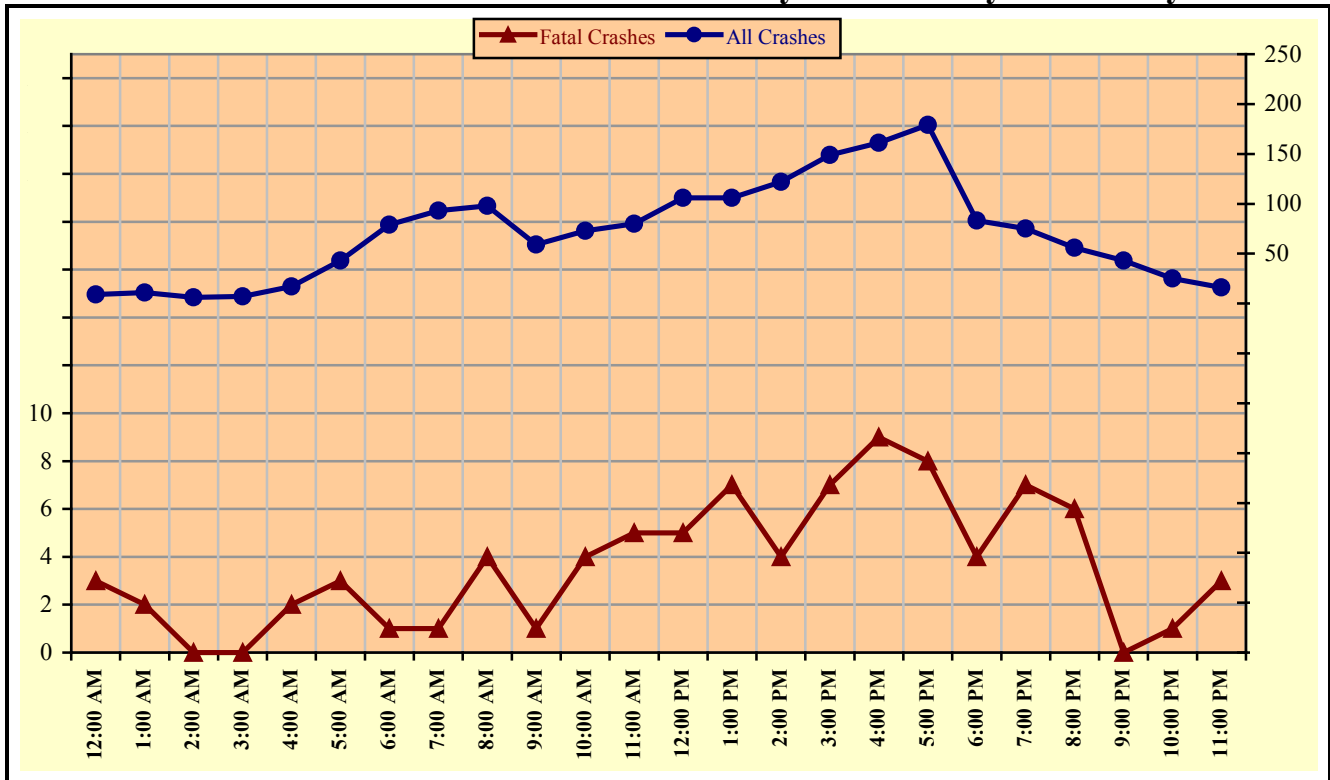
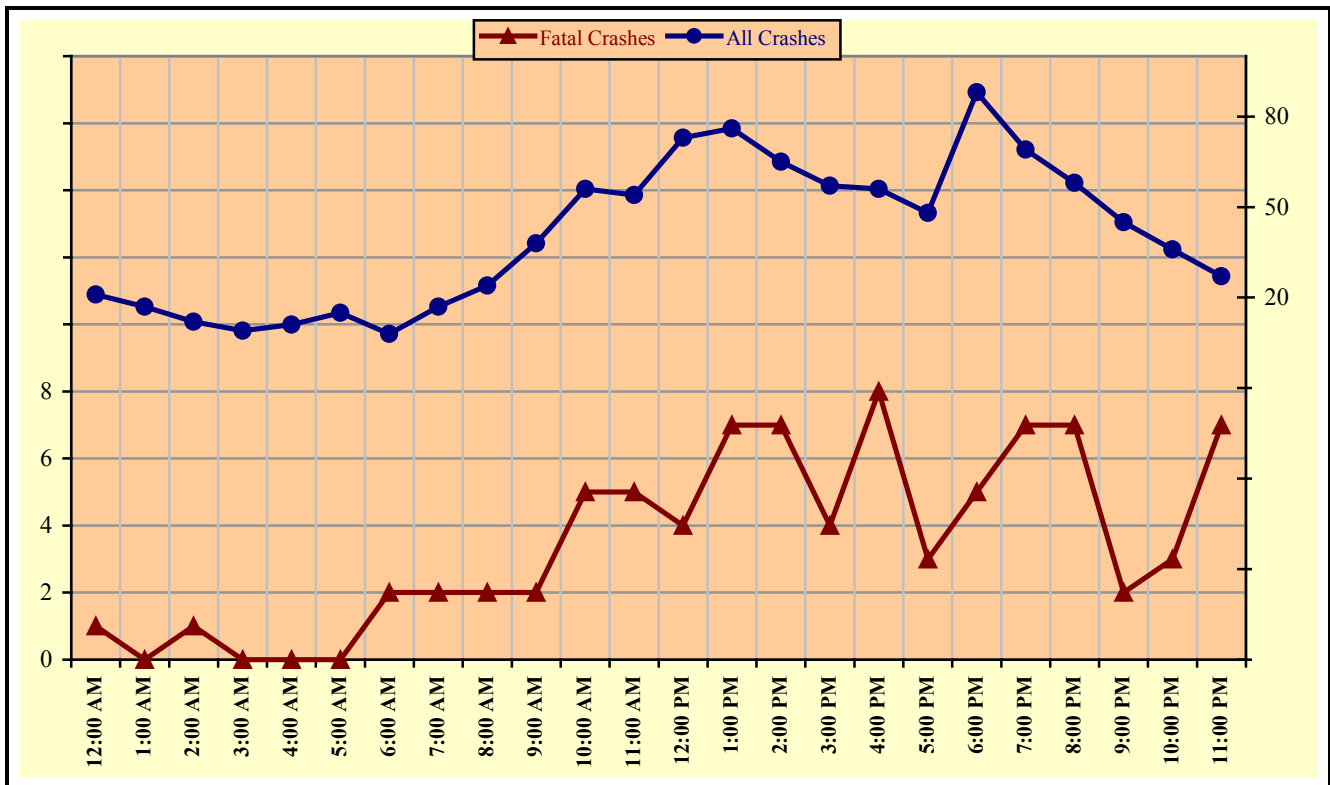


Chart 8 – 6

All MC Crashes vs. Fatal MC Crashes by Time of Day - Weekends



Section 8: – Motorcycle (MC) Crashes

Chart 8 – 7
All MC Crashes vs. Fatal MC Crashes by Day of Week

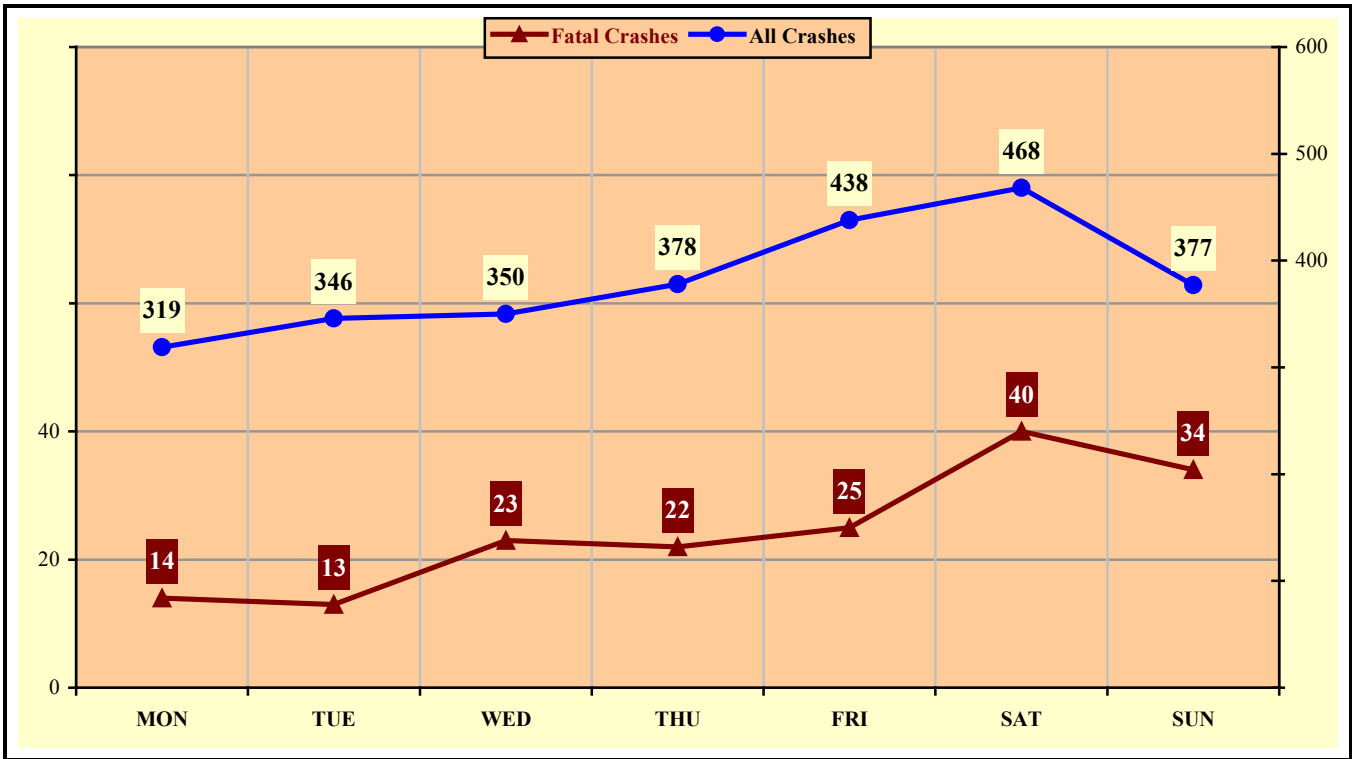
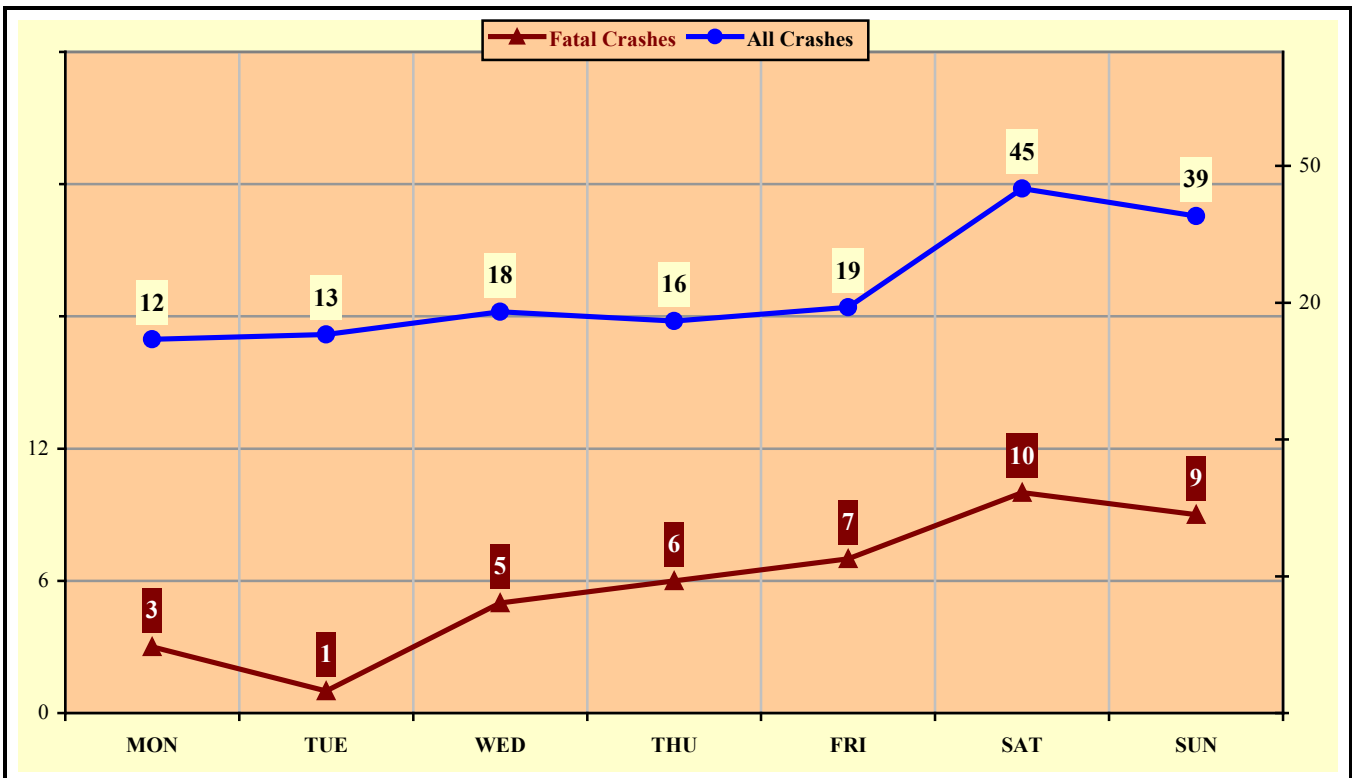


Chart 8 – 8
Alcohol Related MC Crashes vs. Fatal Alcohol Related MC Crashes by Day of Week



Section 8: – Motorcycle (MC) Crashes

Table 8 – 12
MC Crashes by Hour and Day of Week

Hour Beginning	Total Crashes		Monday		Tuesday		Wednesday		Thursday		Friday		Saturday		Sunday		Weekdays		Weekends	
	All	Fatal	All	Fatal	All	Fatal	All	Fatal	All	Fatal	All	Fatal	All	Fatal	All	Fatal	All	Fatal	All	Fatal
12:00 AM	30	4	1	0	2	0	2	1	1	1	4	1	9	0	11	1	9	3	21	1
1:00 AM	28	2	2	0	2	1	1	0	3	1	5	0	7	0	8	0	11	2	17	0
2:00 AM	18	1	0	0	0	0	2	0	2	0	2	0	8	1	4	0	6	0	12	1
3:00 AM	16	0	1	0	1	0	3	0	2	0	1	0	1	0	7	0	7	0	9	0
4:00 AM	28	2	4	0	6	1	1	0	3	0	7	1	4	0	3	0	17	2	11	0
5:00 AM	58	3	9	0	12	1	12	1	11	0	8	1	3	0	3	0	43	3	15	0
6:00 AM	87	3	15	0	17	0	24	1	13	0	10	0	4	1	4	1	79	1	8	2
7:00 AM	110	3	15	1	26	0	18	0	10	0	24	0	10	1	7	1	93	1	17	2
8:00 AM	122	6	21	0	17	1	19	2	20	1	21	0	14	2	10	0	98	4	24	2
9:00 AM	97	3	13	0	6	0	15	0	10	1	15	0	22	1	16	1	59	1	38	2
10:00 AM	129	9	12	1	15	0	14	0	14	1	18	2	38	3	18	2	73	4	56	5
11:00 AM	134	10	9	0	15	0	16	3	16	1	24	1	33	2	21	3	80	5	54	5
12:00 PM	179	9	13	0	16	1	21	0	34	1	22	3	33	1	40	3	106	5	73	4
1:00 PM	182	14	24	2	16	0	19	2	19	3	28	0	44	2	32	5	106	7	76	7
2:00 PM	187	11	21	1	29	1	22	1	24	0	26	1	37	5	28	2	122	4	65	7
3:00 PM	206	11	29	2	24	1	28	1	38	2	30	1	33	2	24	2	149	7	57	4
4:00 PM	217	17	28	1	29	2	32	1	34	3	38	2	24	3	32	5	161	9	56	8
5:00 PM	227	11	21	1	45	1	36	3	40	1	37	2	25	1	23	2	179	8	48	3
6:00 PM	171	9	22	1	21	0	15	1	25	2	34	2	30	1	24	2	83	4	88	5
7:00 PM	144	14	19	1	18	2	23	3	15	1	21	2	26	3	22	2	75	7	69	7
8:00 PM	114	13	16	1	12	1	11	2	17	2	26	3	17	3	15	1	56	6	58	7
9:00 PM	88	2	15	0	8	0	11	0	9	0	10	0	20	2	15	0	43	0	45	2
10:00 PM	61	4	4	0	6	0	3	1	12	0	13	1	16	2	7	0	25	1	36	3
11:00 PM	43	10	5	2	3	0	2	0	6	1	14	2	10	4	3	1	16	3	27	7
TOTAL	2,676	171	319	14	346	13	350	23	378	22	438	25	468	40	377	34	1,696	87	980	84

Crashes during Weekends accounted for 36.62% of all MC crashes and 49.12% of Fatal MC Crashes.

Section 8: – Motorcycle (MC) Crashes

Table 8 – 13

MC Crashes by County

County	Number of Crashes				Number of Persons	
	Total	Fatal	Injury	PDO	Killed	Injured
Apache	9	2	7	0	2	8
Cochise	31	3	22	6	3	24
Coconino	60	5	48	7	5	50
Gila	50	4	43	3	4	49
Graham	12	0	9	3	0	9
Greenlee	11	2	8	1	2	8
La Paz	8	2	5	1	2	5
Maricopa	1,784	93	1,402	289	92	1,472
Mohave	119	12	90	17	12	101
Navajo	19	1	14	4	1	14
Pima	256	26	196	34	26	206
Pinal	112	7	92	13	7	100
Santa Cruz	6	0	6	0	0	6
Yavapai	145	12	116	17	11	133
Yuma	54	2	47	5	3	50
TOTAL	2,676	171	2,105	400	170	2,235

Table 8 – 14

Manner of Collision in MC Crashes

Manner of Collision Type	Number of Crashes							
	Total	Percent of All Crashes	Fatal	Percent of Fatal Crashes	Injury	Percent of Injury Crashes	PDO	Percent of PDO Crashes
Angle	282	16.55%	24	23.76%	212	16.59%	46	14.15%
Left Turn	430	25.23%	37	36.63%	347	27.15%	46	14.15%
Rear End	557	32.69%	18	17.82%	403	31.53%	136	41.85%
Head-On	25	1.47%	2	1.98%	17	1.33%	6	1.85%
Sideswipe (same)	253	14.85%	1	0.99%	192	15.02%	60	18.46%
Sideswipe (opposite)	36	2.11%	2	1.98%	25	1.96%	9	2.77%
U-Turn	12	0.70%	2	1.98%	5	0.39%	5	1.54%
Other*	89	5.22%	12	11.88%	63	4.93%	14	4.31%
Unknown	20	1.17%	3	2.97%	14	1.10%	3	0.92%
TOTAL	1,704	100.00%	101	100.00%	1,278	100.00%	325	100.00%
Note: Includes only multi-vehicle MC crashes								
*Other includes pedestrian and pedalcyclist crashes								

Acknowledgements

Special gratitude to our other providers of data and information including:

The Information Technology Group, Arizona Department of Transportation

Motor Vehicle Division, Arizona Department of Transportation

Multimodal Planning Division, Arizona Department of Transportation

The Federal Highway Administration, U.S. Department of Transportation

National Highway Transportation Safety Administration