

# Arizona Department of Transportation Traffic Engineering Group



September 16<sup>th</sup>, 2020

# **Traffic Engineering Group**

**Maysa Hanna, P.E.**

**State Traffic Engineer**

- **Traffic Design Section**
- **Traffic Standards**
- **Administration**

# Traffic Design

- Design covers Pavement Markings, Signing, Signals, Studies, and Highway Lighting
- Comprised of 3 design teams
- Teams work closely with District Engineers' staff, especially Regional Traffic Engineers (RTE's)

# Traffic Design

## Team 1

Quinn Farol, P.E.

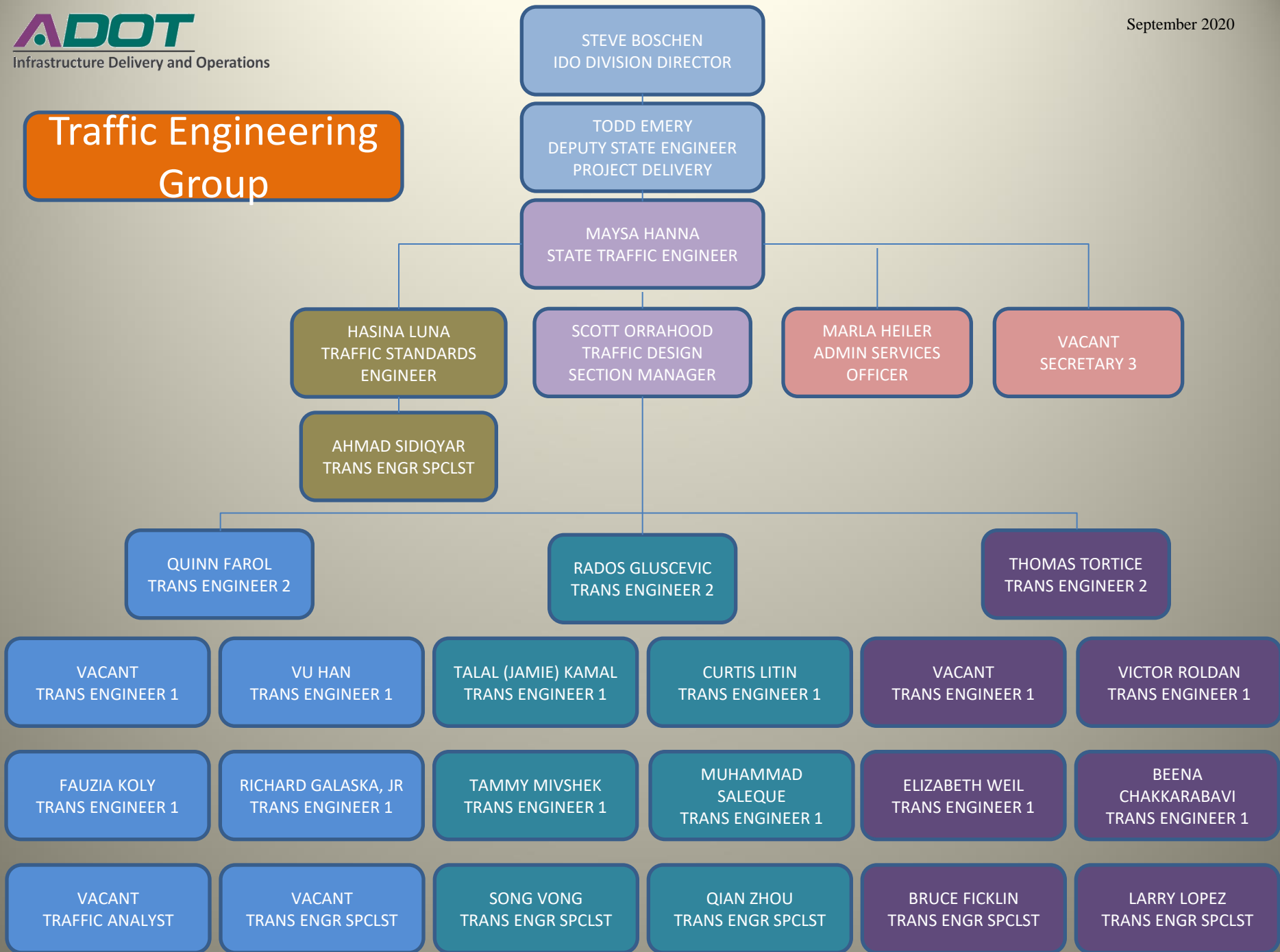
## Team 2

Rados Gluscevic, P.E.

## Team 3

Tom Tortice, P.E.

# Traffic Engineering Group



# Traffic Design

## Traffic Design Responsibilities

- Signing and Pavement Marking
- Signals and Lighting
- Work Zone Traffic Control
- Statewide Sign Requests

# Traffic Design

- Electrical Service Request Letters
  - For Signals and Lighting
- Public Interest Findings for Traffic Items
  - Addressed to State Traffic Engineer from PM or requesting agency
  - Most common justification is “necessary for synchronization with existing facilities”
  - Includes Department Furnished Materials



# Traffic Engineering Group

## Other Groups That Have Traffic Engineering Functions

- Systems Technology Group (TSMO)
  - FMS
  - Traffic Operations Center
  - Rural ITS
- Regional Traffic Engineers (3 in the state)
  - Maintain signing & striping off interstates
  - Operate and maintain traffic signals
  - Investigate traffic operational problems

**Obey al trafic signls**



Questions & Comments