



SONORAN CORRIDOR STUDY

TIER 1 ENVIRONMENTAL IMPACT STATEMENT

ABOUT THE SONORAN CORRIDOR

In partnership with the Federal Highway Administration (FHWA), the Arizona Department of Transportation (ADOT) is conducting an environmental study in compliance with the National Environmental Policy Act. The study will evaluate the feasibility of the Sonoran Corridor, a proposed new highway that would connect Interstate 10 and Interstate 19 south of the Tucson International Airport.

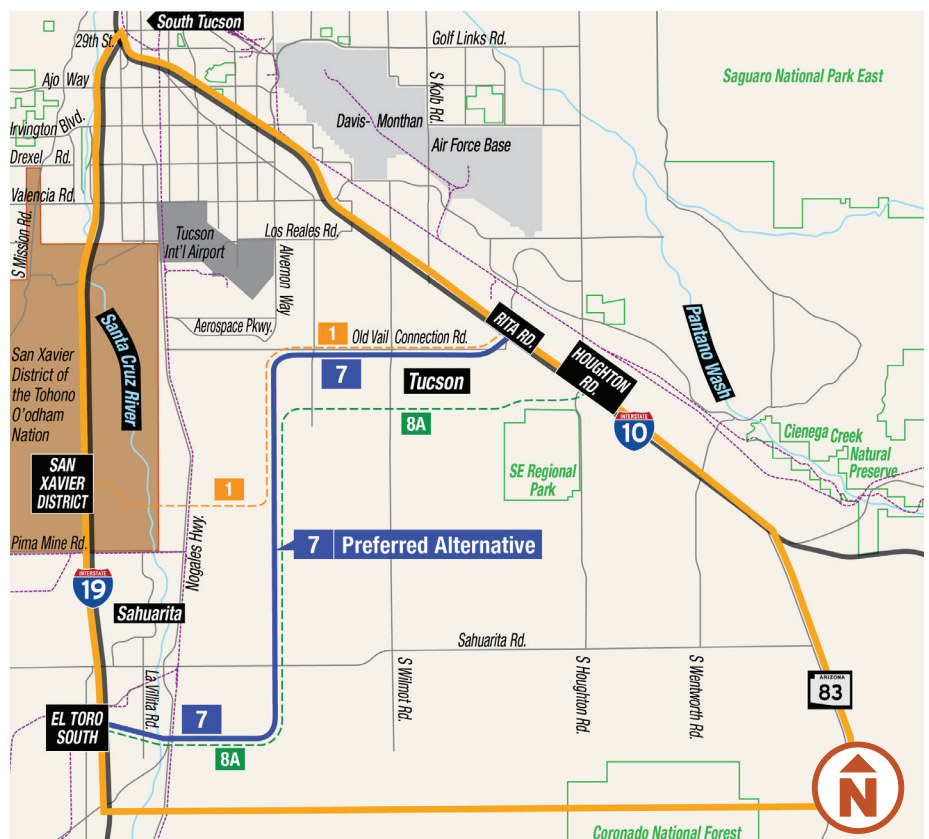
THE STUDY PROCESS

In May 2017, ADOT and FHWA initiated the study for the Sonoran Corridor. A Draft Tier 1 Environmental Impact Statement (EIS) has been prepared that evaluates a Reasonable Range of Corridor Alternatives (see map at right), which includes a “no-build” option, to identify a Preferred Alternative. A Corridor Selection Report documented the alternatives analysis and identified a range of reasonable corridor alternatives that were studied further. The Draft Tier 1 EIS has been prepared and is available for review on ADOT’s website at azdot.gov/sonorancorridor.

PREFERRED CORRIDOR DESCRIPTION

The Preferred Corridor that was selected from the Reasonable Range of Corridor Alternatives is identified as Corridor Alternative 7. It would connect with Interstate 10 at Rita Road in Tucson, extend about six miles west and then continue south and west to connect with Interstate 19 approximately one-third of a mile south of El Toro Road. The Draft Tier 1 EIS establishes a broad corridor alignment to be followed by Tier 2 studies that would establish a specific alignment within the broad corridor where the proposed Sonoran Corridor would be constructed.

RANGE OF REASONABLE ALTERNATIVES MAP



Map not to scale.

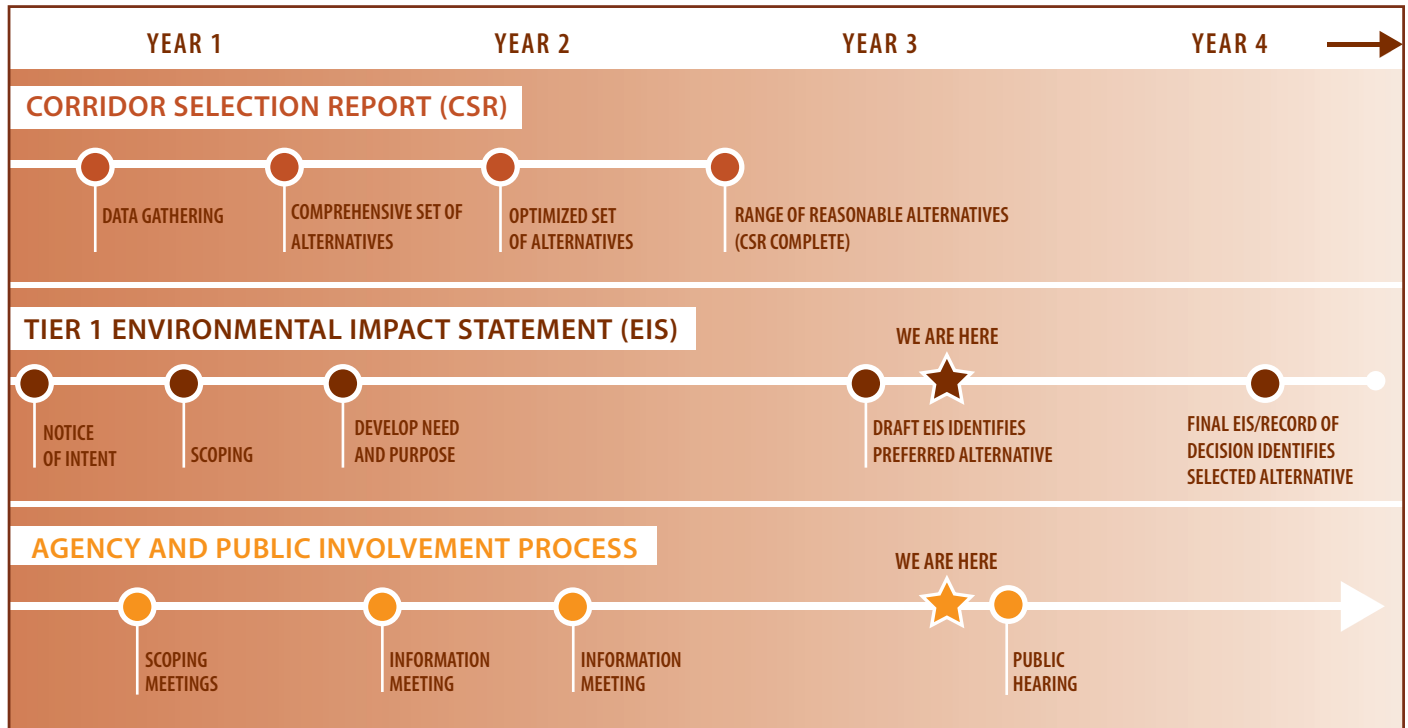
LEGEND

—	SONORAN CORRIDOR STUDY AREA	—	CORRIDOR ALTERNATIVE 7 (PREFERRED ALTERNATIVE)
- - -	CORRIDOR ALTERNATIVE 1	- - -	CORRIDOR ALTERNATIVE 8A

ABOUT THE TIER 1 ENVIRONMENTAL IMPACT STATEMENT (EIS)

The Draft Tier 1 EIS further studied the potential environmental impacts of three corridor alternatives, along with a “no-build” option. Through this environmental study, the team assessed a wide range of environmental factors. The Draft EIS describes how the environmental factors were evaluated for each corridor presented in the Reasonable Range of Alternatives and comply with all applicable environmental laws. The goal was to make an informed decision on the Preferred Corridor Alternative. The Draft Tier I EIS information will be presented to the public in an in-person Public Hearing, as well as a Virtual Public Engagement event, to be held in early December 2020. To date, no funds have been identified for the subsequent Tier 2 analysis or for construction of the potential highway.

SONORAN CORRIDOR STUDY PROCESS AND SCHEDULE



HOW YOU CAN GET INVOLVED

ADOT and FHWA will continue to involve stakeholder agencies, organizations and members of the community throughout the study process. Opportunities to comment on the Draft Tier 1 EIS will be available at the Public Hearing, the Virtual Public Engagement event and through other options for participating that are listed to the right.

Public comment on the Preferred Corridor Alternative and the Draft Tier 1 EIS will be accepted during the official public review and comment period from Nov. 6, 2020 to Jan. 8, 2021. Study related questions and comments will be responded to by the project team in a combined Final Tier 1 EIS/Record of Decision (ROD) document anticipated to be released summer of 2021. Questions about the study should be submitted during the formal comment period through the options listed on this document.

As noted, a Preferred Corridor Alternative will be presented at a Public Hearing and a Virtual Public Engagement event scheduled to be held in early December 2020 to receive input from the public and stakeholders on the Draft Tier 1 EIS. Public input on the document will be considered in a Final EIS and ROD from the FHWA that will bring the study to conclusion.



azdot.gov/sonorancorridor



Toll-free bilingual information line:
1.855.712.8530



sonorancorridor@azdot.gov



Sonoran Corridor Tier 1 EIS Study Team
c/o Joanna Bradley
1221 S. Second Ave., Mail Drop T100
Tucson, AZ 85713