

**PROJECT DELIVERY ACADEMY**

**MODULE 1: Planning and Programming**

# **MPD CORRIDOR PLANNING**

**Presented by:**

**Carlos Lopez**

ADOT Multimodal Planning Division  
Corridor Planning Manager

# Overview:

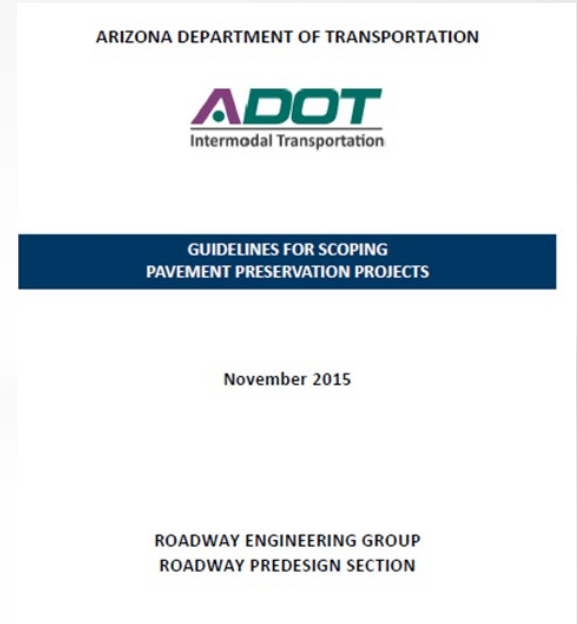
- Planning Level Scoping (PLS)
- Corridor Planning Studies and Environmental Review Process

# Planning Level Scoping (Scoping prior to Programming)



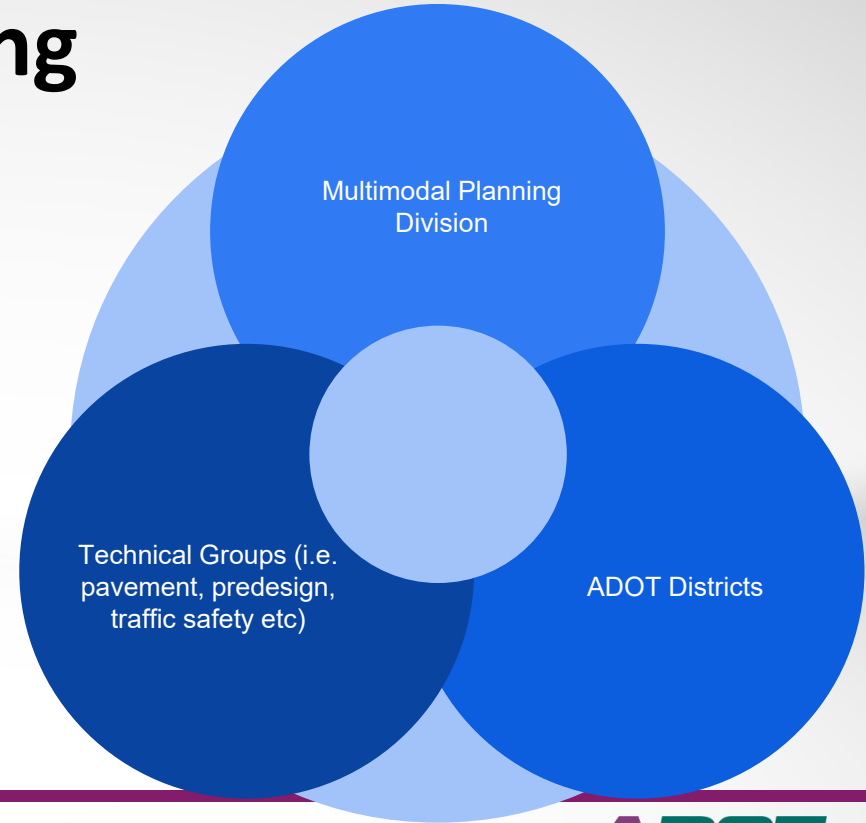
# Scoping Pavement Preservation Projects

Goal: Establish consistent approach of work items to be addressed within project termini



# Planning Level Scoping

Holistic approach to  
develop scopes of work  
on pavement  
preservation projects at  
the planning stage





# Conclusion: Planning Level Scoping

- ▶ Planning level scoping completed ahead of programming
- ▶ Project construction placed in year 3 of program
- ▶ Project Management Group advances projects through final design

# Corridor Planning Studies

- Overview (Future Interstate Corridors)
- Environmental Review Process
- Coordination and Collaboration
- Outcomes

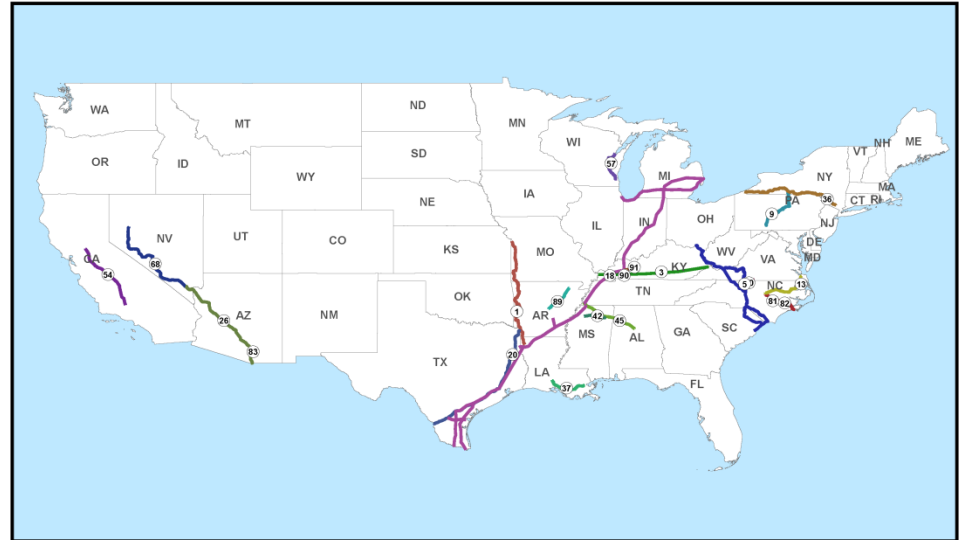
# Future Interstate Corridors

- Corridor 26: I-11 (AZ to Nevada)
- Corridor 83: Sonoran Corridor (I-19 to I-10)



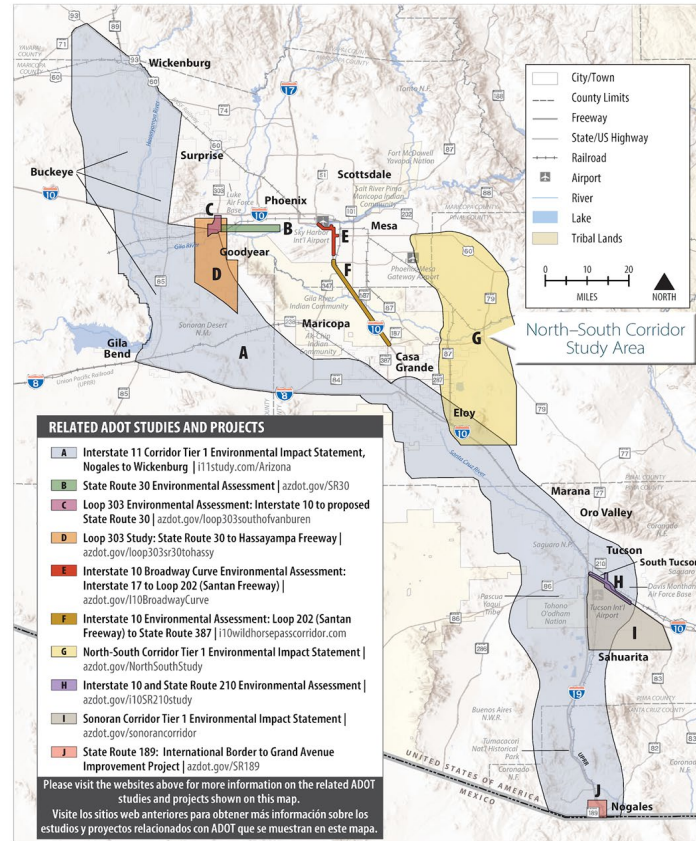
U.S. Department of Transportation  
Federal Highway Administration  
Office of Planning, Environment, and Realty

High Priority Corridors Designated as Future Interstates by Congress

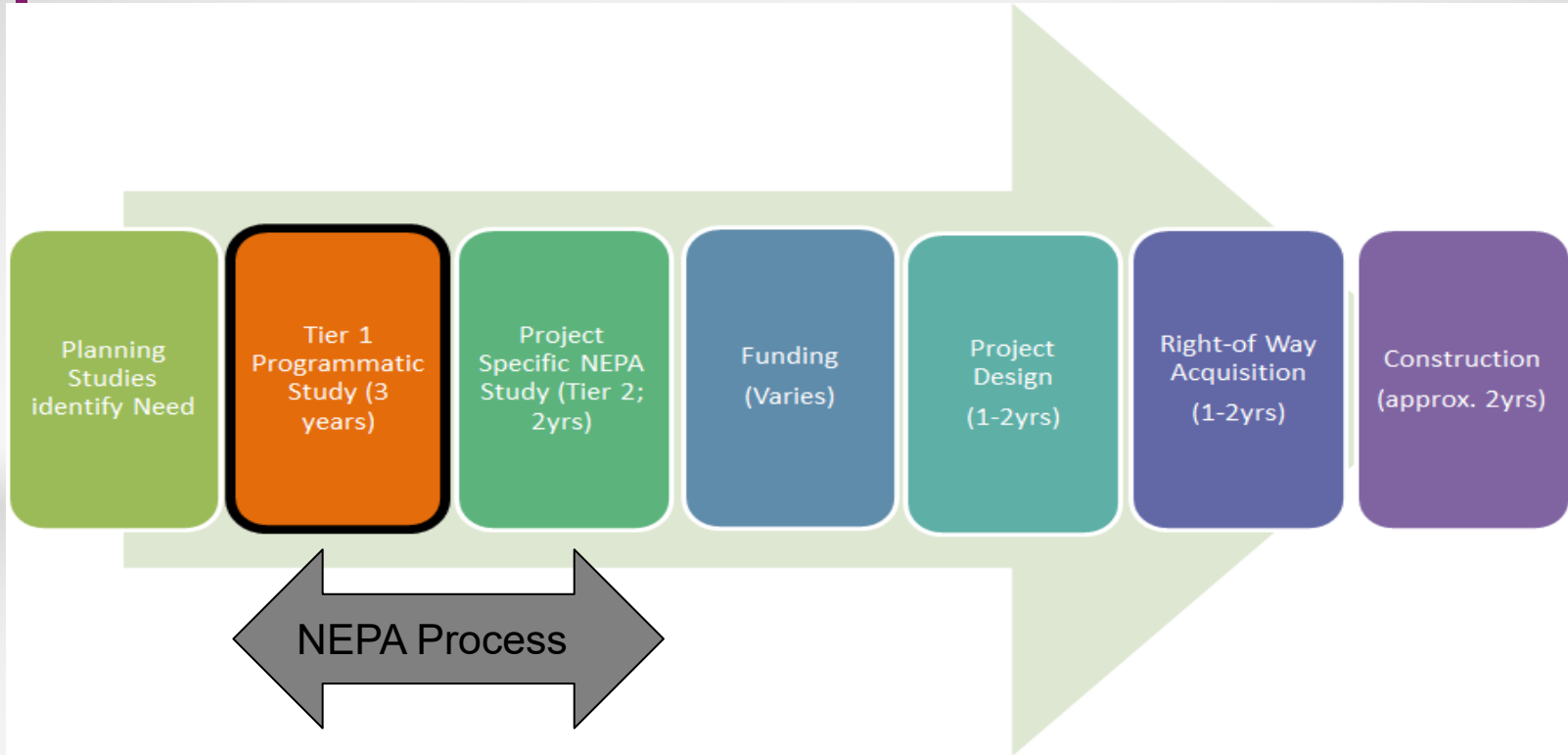


Notes:  
Colors are added for clarity only.  
Corridor numbers correspond to statutory listing in Section 1105(c) of ISTEA 1991, as amended.  
Some portions of the future interstates have been constructed to interstate standards, open to traffic and signed as interstates.  
Corridors based on information available as of December 20, 2019.

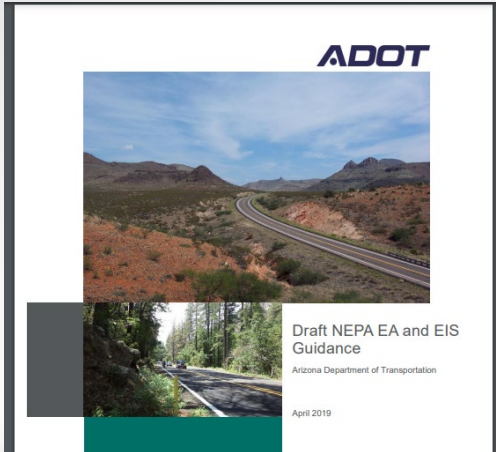
# RELATED ADOT STUDIES AND PROJECTS



# Project Development Process

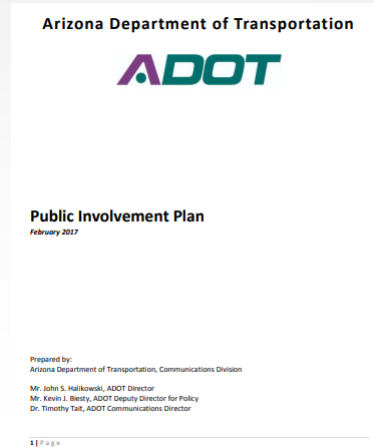


# Corridor Planning Collaboration



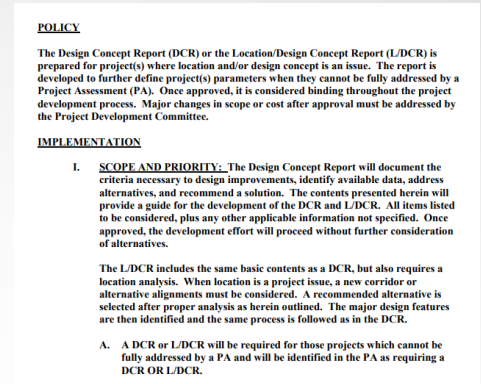
## Environmental Planning Guidance

<https://azdot.gov/sites/default/files/media/2021/01/ea-EIS-guidance.pdf>



## Public Involvement Plan

<https://azdot.gov/sites/default/files/2019/05/adot-public-involvement-plan.pdf>



## Scoping Guidelines:

<https://apps.azdot.gov/files/Roadway-Engineering/predesign/adot-policy-project-assessments-and-design-concept-reports.pdf>

- Scoping (internal and external stakeholder partners)
- Establishes the basis for the development of alternatives

Improve access  
to future activity  
centers

The proposed corridor would benefit the study area's new activity and population centers and undeveloped lands identified for development that are in various stages of local or regional planning processes.



## Population and Employment Growth

Consistent with state, regional, and municipal planning initiatives, the proposed corridor would accommodate anticipated growth in the study area and across the larger region.



## Improve regional mobility

The proposed corridor would provide additional roadway capacity ahead of full development build-out to avoid congestion associated with anticipated growth.



Improve north-to-south connectivity

The proposed corridor would connect eastern portions of the Phoenix metropolitan area with Pinal County and destinations to the south, including Tucson.



**Provide an alternative to avoid congestion on I-10**

The proposed corridor would provide a continuous alternative to I-10 to reduce traffic delays at full development build-out.



## Integrate the region's transportation network

The proposed corridor would provide a critical link, currently missing, in the transportation network to provide regional connectivity.



# Alternatives Analysis

- Environmental Resources
- Avoidance Areas
- Design guidelines (interstate)
- Proposed Alternatives

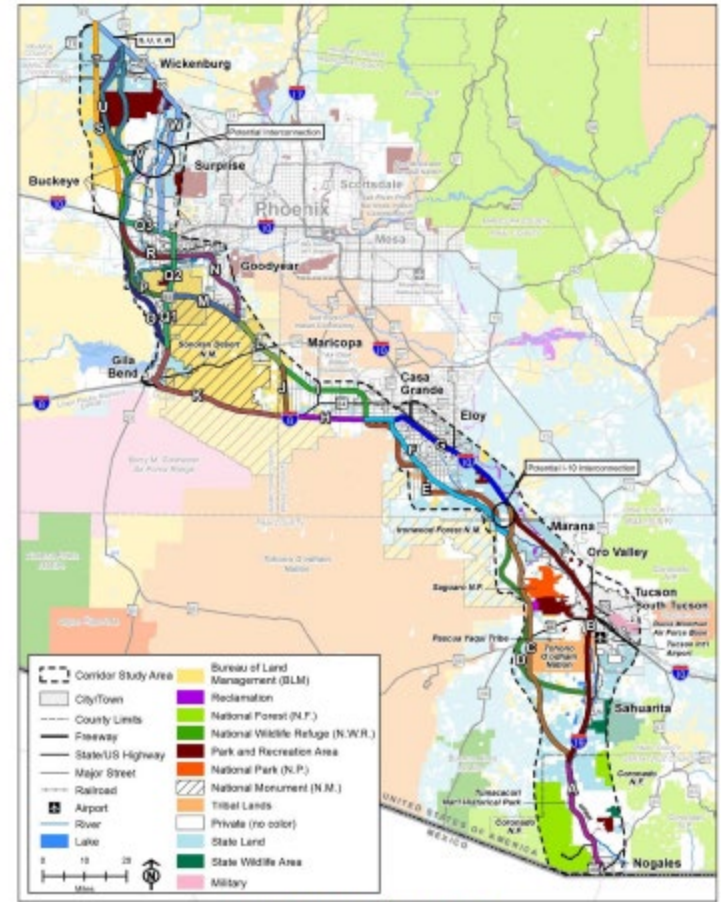
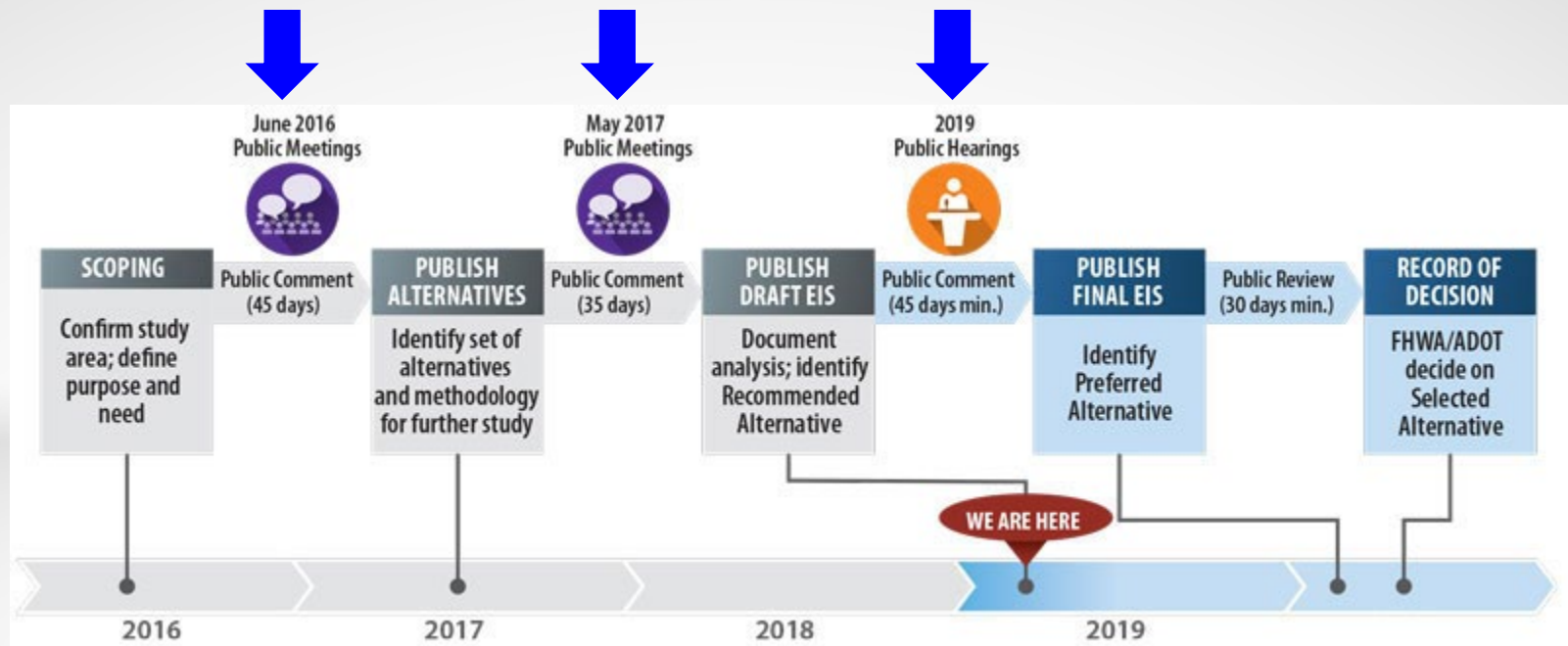


Figure 3-3 I-11 Corridor Options

# Outreach and Coordination



# Outcomes

- Corridor Improvement Plan Developed
  - Implementation plan/strategies
  - Identify Funding Needs
  - Long Range Plan Coordination

# PROJECT DELIVERY ACADEMY

## MODULE 1: Planning and Programming

# QUESTIONS?