

**PROJECT DELIVERY ACADEMY**

**MODULE 1: Planning and Programming**

# PROGRAMING

**Presented by:**

**Bret Anderson**

**Program Manager**

**Multimodal Planning Division**

# MPD PLANNING

## FIVE YEAR FACILITIES CONSTRUCTION PROGRAM

**After this presentation you should be able to:**

Recognize and Understand the:

- ☐ **WHO**
- ☐ **WHAT**
- ☐ **WHY**
- ☐ **WHERE**
- ☐ **WHEN**
- ☐ **HOW**

Related to the 5 Year Program and the MPD planning process

# WHO

- ☐ Financial Management Services
- ☐ State Engineer's Office
- ☐ Multimodal Planning Division
- ☐ District Engineers
- ☐ Statewide Project Management
- ☐ COGs MPOs
- ☐ State Transportation Board

# WHAT

- ☐ Decision Making
  - Funding Levels, RIC, Department Policy
- ☐ Capital Improvement Plan for Department (STIP)
- ☐ Project Level

# WHY

- ☐ State Transportation Board Policy
- ☐ ARS 28-6951 through 28-6955
- ☐ Annual Requirement
- ☐ ADOT's TIP
- ☐ Federal Requirement for use of Federal Funds

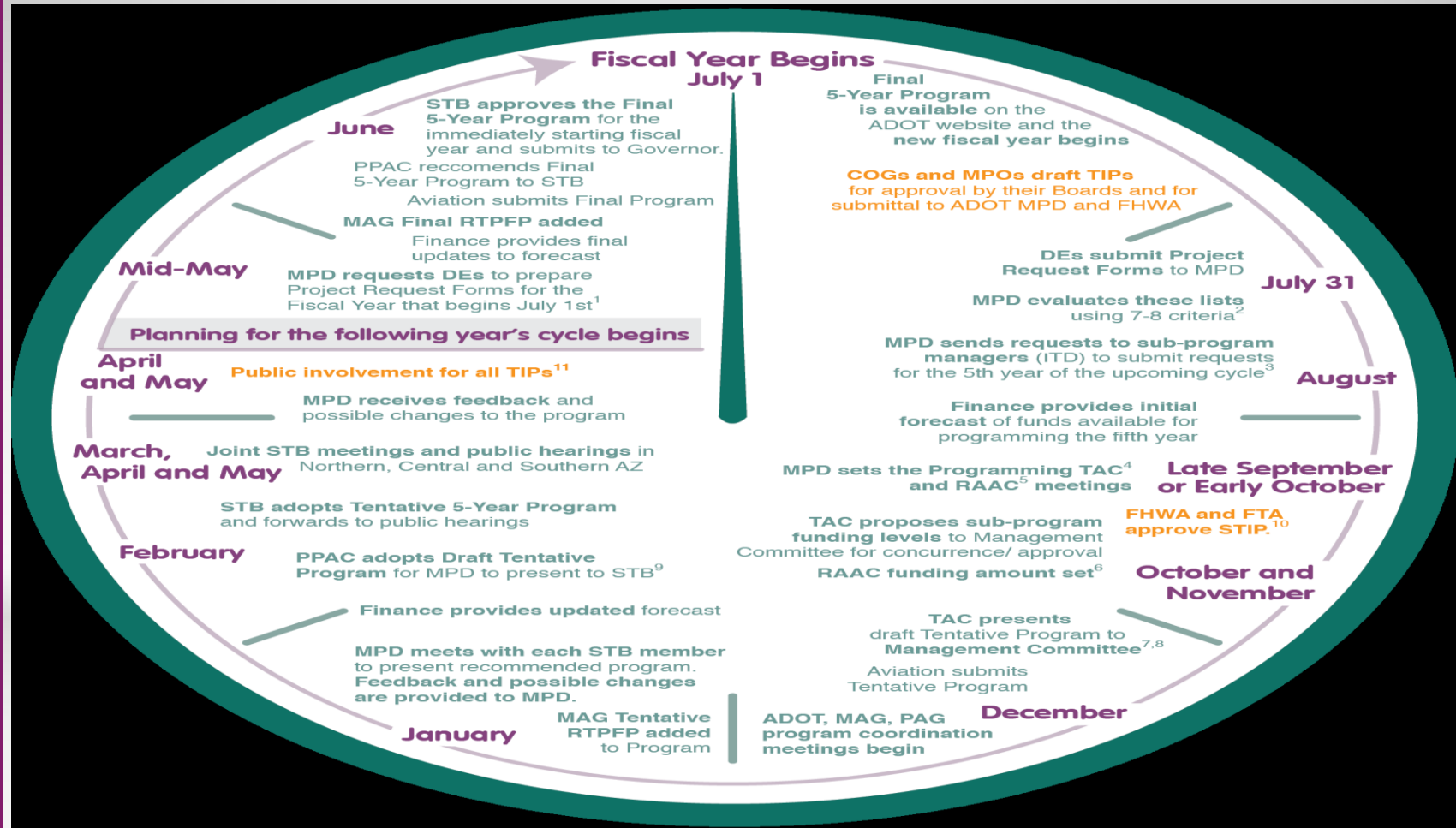
# WHERE

- ☐ Organization
- ☐ Multimodal Planning Division
- ☐ Infrastructure Delivery and Operations Division
- ☐ District Involvement
- ☐ COG / MPO Coordination
- ☐ Group Managers

Pavement, Bridge, Sign, Rest Area, POE, etc

# WHEN

- ☐ July 1 New Program Available
- ☐ July – August Project Evaluation
- ☐ September – October District Workshops – RAAC Meetings
- ☐ December ADOT, MAG, PAG Coordination
- ☐ February PPAC & STB Adopt Tentative Program
- ☐ March, April, May Public Hearings
- ☐ June STB Approves Final Program





# HOW

## ☐ Sub Programs

### ☐ Block of Money set aside for the use of that type of work

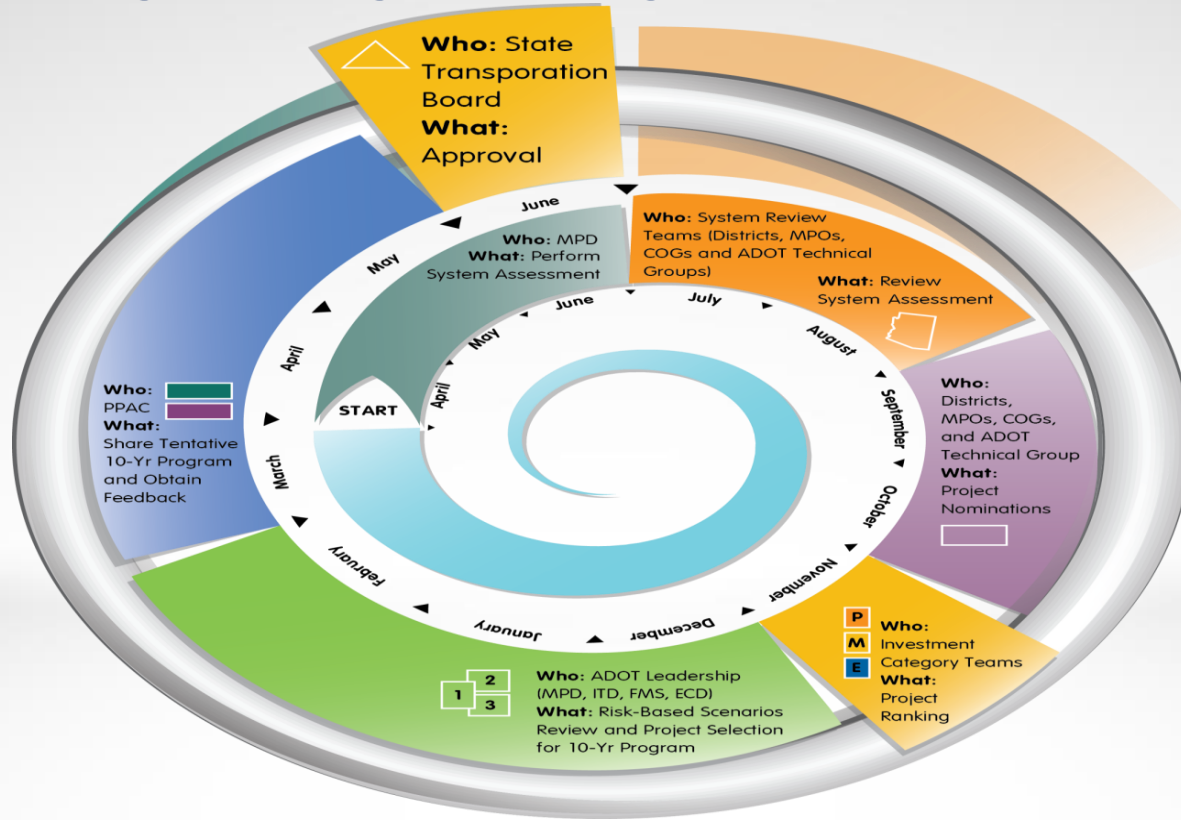
- |  |  |
|--|--|
| <input type="checkbox"/> Bridge        | <input type="checkbox"/> Right of Way  |
| <input type="checkbox"/> Pavement      | <input type="checkbox"/> Utilities     |
| <input type="checkbox"/> Port of Entry | <input type="checkbox"/> HSIP (Safety) |
| <input type="checkbox"/> Environmental | <input type="checkbox"/> Rest Area     |

## ☐ Group Managers give approval to use

- ☐ Take to PRB to Establish a project
- ☐ Moves to PPAC for approval (1 Month)
- ☐ Goes to State Transportation Board (1 Month)
- ☐ Approved

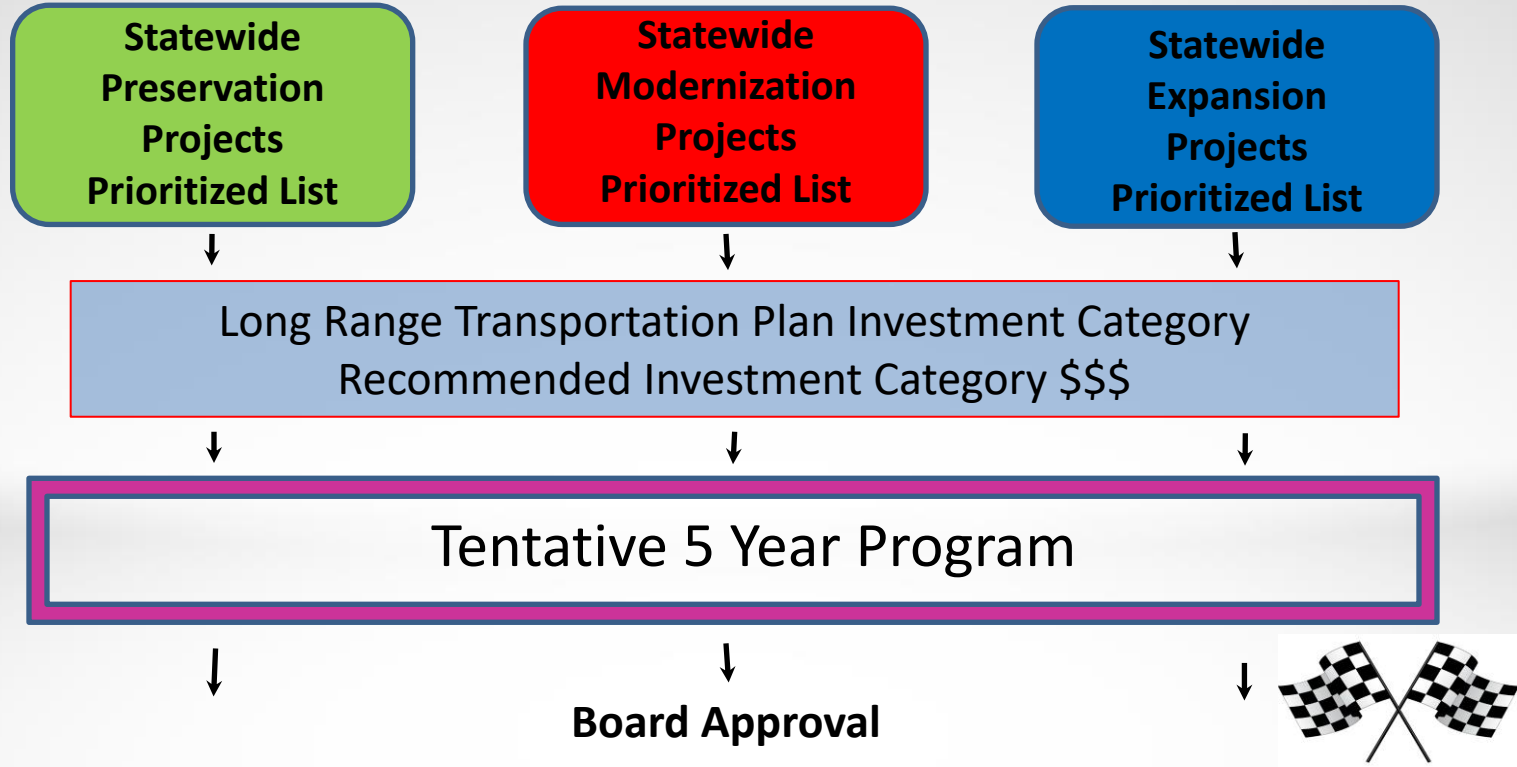
## ☐ Coordination with COG's and MPO's

# Planning to Programming Process Annual Cycle



# Planning to Programming

## L RTP Recommended Investment Choice Application



# PROJECT DELIVERY ACADEMY

## MODULE 1: Planning and Programming

# QUESTIONS?

**PROJECT DELIVERY ACADEMY**

**MODULE 1: Planning and Programming**

**THANK YOU**