

Arizona Department of Transportation Traffic Engineering Group



April 14th, 2021

Traffic Engineering Group

Maysa Hanna, P.E.

State Traffic Engineer

- **Traffic Design Section**
- **Traffic Standards**
- **Administration**

Traffic Design

- Design covers Pavement Markings, Signing, Signals, Studies, and Highway Lighting
- Comprised of 3 design teams
- Teams work closely with District Engineers' staff, especially Regional Traffic Engineers (RTE's)

Traffic Design

Team 1

Quinn Farol, P.E.

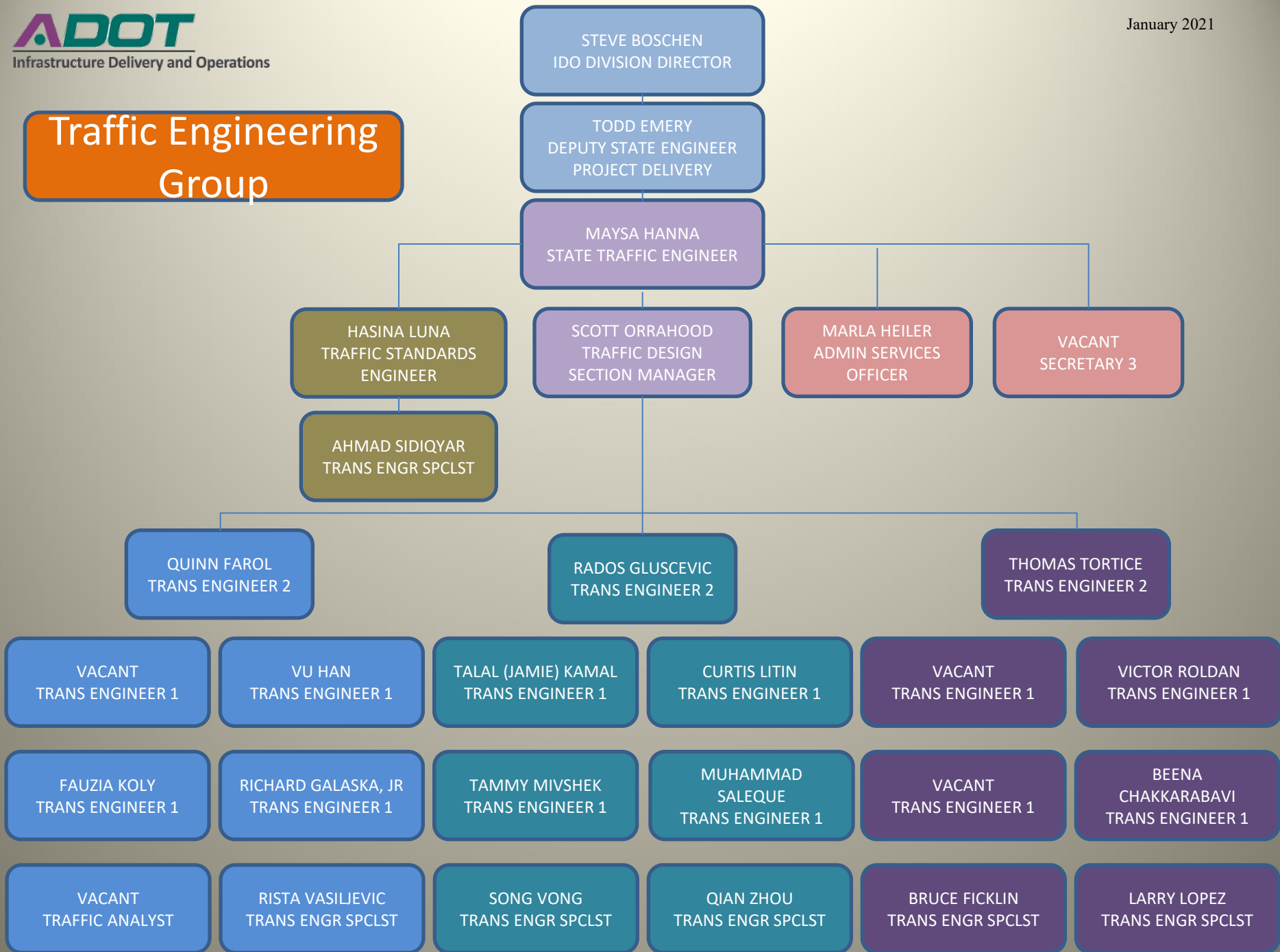
Team 2

Rados Gluscevic, P.E.

Team 3

Tom Tortice, P.E.

Traffic Engineering Group



Traffic Design

Traffic Design Responsibilities

- Signing and Pavement Marking
- Signals and Lighting
- Work Zone Traffic Control
- Statewide Sign Requests

Traffic Design

- Electrical Service Request Letters
 - For Signals and Lighting
- Public Interest Findings for Traffic Items
 - Addressed to State Traffic Engineer from PM or requesting agency
 - Most common justification is “necessary for synchronization with existing facilities”
 - Includes Department Furnished Materials

Traffic Engineering Group

Other Groups That Have Traffic Engineering Functions

- Systems Technology Group (TSMO)
 - FMS
 - Traffic Operations Center
 - Rural ITS
- Regional Traffic Engineers (3 in the state)
 - Maintain signing & striping off interstates
 - Operate and maintain traffic signals
 - Investigate traffic operational problems

Obey al trafic signls



Questions & Comments