

ADOT Title VI eMap and Four Factor Analysis for LEP Training

Presented by:
ADOT Civil Rights Office
October 19th, 2021

Agenda

1. Four Factor Analysis
2. Title VI eMap overview
3. Q & A

Title VI of Civil Rights Act 1964, 42 U.S.C. 2000d et seq.

Title VI prohibits discrimination on the basis of race, color, or national origin in any program or activity that receives Federal funds or other Federal financial assistance.



Environmental Justice

- Executive Order 12898 was issued to focus on environmental and human health conditions in **minority and low-income communities**;
- **Designed to promote nondiscrimination in federal programs**
- **Designed to provide minority and low-income communities' access to public information, and opportunity for participation in matters relating to human health or the environment.**

Limited English Proficiency

Limited English Proficiency (LEP) – an individual who has limited ability to read, speak, write, or understand English

Executive Order 13166 – LEP persons should have meaningful access to federally conducted and federally funded programs and activities

LEP in Public Involvement

- Describe how the Agency provides meaningful access to LEP individuals in the transportation planning process.
 - Engage
 - Outreach
- The process should include:
 - Identifying LEP individuals who need language assistance
 - Agency wide
 - Project by project basis

Four Factor Analysis for LEP



Demography – Number and proportion of LEP people in the service area

Frequency – Rate of contact with services or programs

Importance – Nature and importance of program services

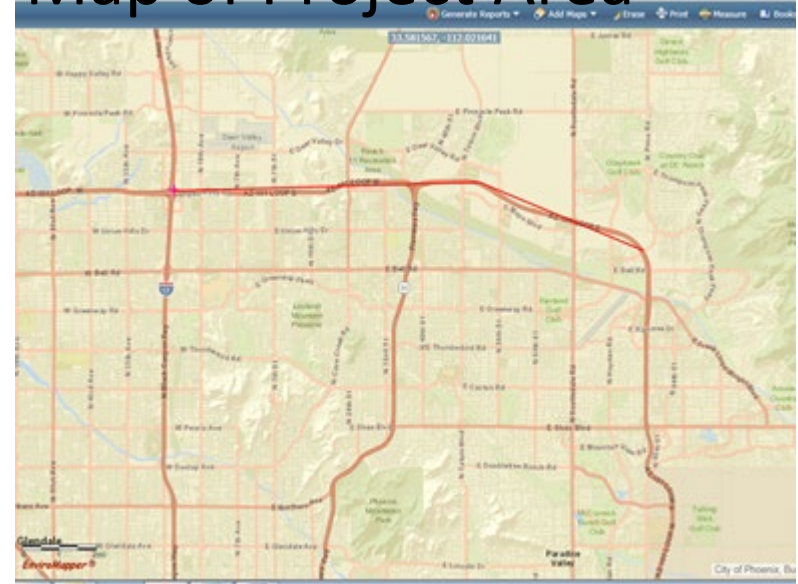
Resource – Availability of resources (cost)

Factors to consider (prior)

Geographic area (Project Area)

Purpose of this Four Factor Analysis

Map of Project Area



Safe Harbor Threshold

Safe Harbor Threshold – written translation must be provided for vital documents for each eligible LEP language group that constitutes five percent (5%) or 1,000 persons, whichever is less, of the total population of persons eligible to be served or likely to be affected or encountered, by the program/activity (a "safe harbor" for translation of written materials).

failure to provide written translations under these cited circumstances does not mean that the recipient is in noncompliance

the "safe harbors" provide a starting point for recipients to consider

	Pinal County, Arizona	
	Estimate	Margin of Error
Russian:	150	+/-127
Speak English "very well"	99	+/-99
Speak English less than "very well" ←	51	+/-52
Polish:	339	+/-150
Speak English "very well"	224	+/-104
Speak English less than "very well"	115	+/-69
Serbo-Croatian:	63	+/-71
Speak English "very well"	63	+/-71

Census Table B16001

Language Spoken at Home by Ability to Speak English for the Population 5 Years and Over

// Search / Tables / B16001

LANGUAGE SPOKEN AT HOME BY ABILITY TO SPEAK ENGLISH FOR THE POPULATION 5 YEARS AND OVER

Survey/Program: American Community Survey Universe: Population 5 years and over TableID: B16001 Product: 2015: ACS 5-Year E

Notes Selections 1 Geo Years Topics Surveys Codes 123 Hide Transpose Margin of Error Filter Restore Excel Download

Pinal County, Arizona		
Label	Estimate	Margin of Error
▼ Total:	364,260	±148
Speak only English	287,724	±2,262
▼ Spanish or Spanish Creole:	63,070	±2,122
Speak English "very well"	43,331	±1,880
Speak English less than "very well"	19,739	±1,479
▼ French (incl. Patois, Cajun):	1,172	±451
Speak English "very well"	1,050	±398
Speak English less than "very well"	122	±96

Example:
Flagstaff, AZ
Pop: 64,361
5% is: 3,218
1,000 or 3,218

Miami, AZ
Pop: 1,920
5% is: 96
1,000 or 96

e-MAP

eMAP web viewer is an interactive GIS web mapping application that provides an easy way to explore, visualize, and analyze Environmental Justice, Title VI, and Limited English Proficiency GIS information in Arizona. With eMaps, you can view data produced by CRO such as:

- Race
- Minority
- Limited English Proficiency
- Low Income
- Vehicle per Household
- Disability
- Schools

<http://adot.maps.arcgis.com/apps/webappviewer/index.html?id=b5f9b2a32b364f7997f22b169f254afb>

Questions?

Civil Rights Office

602-712-8496

CivilRightsOffice@azdot.gov