

The public meeting for SR 89A Oak Creek Canyon Improvements will begin shortly

While you are waiting please take this one-question, anonymous self-identification survey.

By completing this voluntary survey, ADOT will be able to help determine who attends its public meetings and how the department can improve participation. The survey will also help ADOT fulfill federal reporting requirements.

English: azdot.gov/self-id-survey-89a

Spanish: azdot.gov/self-id-survey-89a-sp

If you are having technical difficulties, please contact

Webex Help: 866.229.3239

SR 89A Oak Creek Canyon Improvements Public Meeting

March 23, 2022 | 6 p.m.

If you are having technical difficulties, please contact
Webex Help: 866.229.3239

Welcome!

- All participants have been muted to avoid background noise.
- Technical difficulties:
 - Call Webex at **866.229.3239**
- Following the meeting presentation, we will take questions and comments online and by phone.
 - Instructions will be provided on how to participate.

ADOT Non-Discrimination Notice

The Arizona Department of Transportation (ADOT) hereby gives public notice that it is the Agency's policy to assure full compliance with Title VI of the Civil Rights Act of 1964, Title II of the Americans with Disabilities Act of 1990 (ADA), and other related authorities in all of its programs and activities. ADOT's Title VI and ADA Programs require that no person shall, on the grounds of race, color, national origin, age, sex, disability, low income status or limited English proficiency (LEP) be excluded from participation in, be denied the benefits of, or be otherwise subjected to discrimination under any program or activity.

Any person, who believes his/her Title VI or ADA rights have been violated, may file a complaint. Any such complaint must be in writing and filed with the ADOT Civil Rights Office within one hundred eighty (180) days following the date of the alleged discriminatory occurrence. For additional information about ADOT's Civil Rights programs and the procedures to file a complaint, contact the ADOT Civil Rights Office at: **602.712.8946** or **civilrightsoffice@azdot.gov**

Aviso Publico De La Ley No-Discriminación De ADOT

El Departamento de Transporte de Arizona (ADOT) por la presente notifica al público que es la política de la Agencia asegurar el pleno cumplimiento con el Título VI de la Ley de Derechos Civiles de 1964, el Título II de la Ley de Estadounidenses con Discapacidades de 1990 (ADA) y otras autoridades relacionadas en todos sus programas y actividades. Los Programas de Título VI y ADA de ADOT requieren que ninguna persona, por motivos de raza, color, origen nacional o discapacidad, sea excluida de la participación, se le niegue los beneficios de, o de otra manera ser sujeta a discriminación bajo cualquier programa o actividad.

Cualquier persona que considere que sus derechos de Título VI o ADA han sido violados, puede presentar una queja. Cualquier queja debe ser por escrito y presentada ante la Oficina de Derechos Civiles de ADOT dentro de los ciento ochenta (180) días siguientes a la fecha de la presunta ocurrencia discriminatoria. Para obtener información adicional sobre los programas de Derechos Civiles de ADOT y los procedimientos para presentar una queja, comuníquese con la Oficina de Derechos Civiles de ADOT al: **602.712.8946** o **civilrightsoffice@azdot.gov**

Auxiliary Aids And Services

In compliance with Title II of the Americans with Disabilities Act (ADA), Section 504 of the Rehabilitation Act of 1973, the Arizona Department of Transportation (ADOT) does not discriminate against qualified individuals with disabilities on the basis of disability in its programs, services, and activities.

ADOT will make reasonable modifications to ensure that individuals with disabilities have an equal opportunity to enjoy ADOT's programs, services, and activities.

If you require an accommodation, please notify an ADOT staff member.

For additional information or questions about ADOT's External ADA Program, please contact the **Civil Rights Office at 602.712.8946.**

Servicios Y Asistencia Adicional

En cumplimiento con el Título II de la ley de ciudadanos Americanos con Discapacidades (ADA por sus siglas en inglés) y la Sección 504 de la Ley de Rehabilitación de 1973, el Departamento de Transporte del estado de Arizona no discrimina contra individuos con discapacidades en sus programas, servicios y actividades administrados por el departamento.

ADOT hará modificaciones razonables para asegurar que individuos con discapacidades tengan las mismas oportunidades de disfrutar y participar en todos los programas, servicios y actividades de ADOT.

Las personas que requieran asistencia o una adaptación razonable por discapacidad por favor informe a un empleado de ADOT.

Si tiene cualquier pregunta o desea más información sobre el programa de no discriminación de ADOT, por favor póngase en contacto con la **Oficina de Derechos Civiles de ADOT al 602.712.8946.**

Meeting Agenda

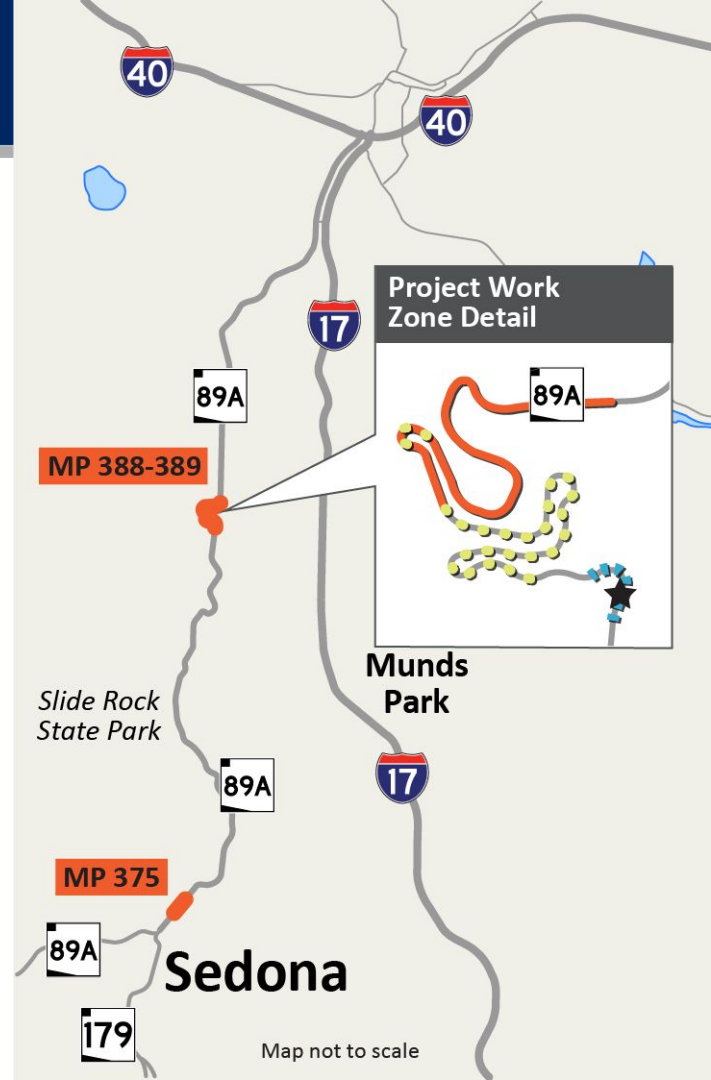
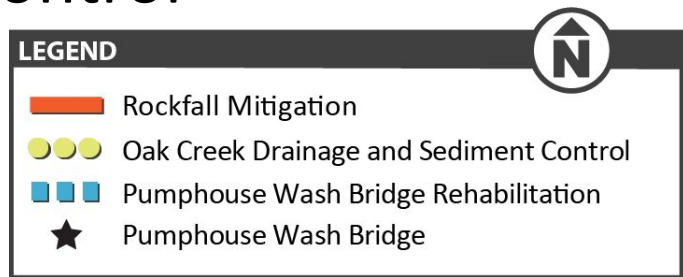
- Introduction of ADOT Representatives
- Presentation
- Question-and-Answer Session

Tonight's Presenters

- Brenden Foley, P.E., Assistant District Engineer, ADOT
Northcentral District
- Other project team members available for the Q&A session

SR 89A Improvements

- Rockfall Mitigation
- Pumphouse Wash Bridge Rehabilitation
- Oak Creek Drainage and Sediment Control



Rockfall Mitigation

- Two locations:
 - Just north of Sedona city limits.
 - North of Pumphouse Wash Bridge.



Rockfall Mitigation

- Break up/remove loose rock.
- Blasting operations.
- Stabilize rock slopes.
- Pavement repairs and restriping.



Pumphouse Wash Bridge Rehabilitation

- Located about two miles south of Oak Creek Vista.
- Bridge is deteriorating.
- Will extend bridge life by about 25 years.



Oak Creek Drainage & Sediment Control

- Located north of the bridge.
- Past significant mud- and rockslide events.
 - Created safety and maintenance concerns.
 - Resulted in road closures for cleanup and maintenance work.



Oak Creek Drainage & Sediment Control

- Installation of:
 - Concrete barrier.
 - Retaining wall.
 - Gabion mattresses.
 - Drainage pipe and catch basin.
- Roadside drainage excavation.



Minimizing Impacts

- Worked with agency partners on best approach to minimize overall impacts.
- With the exception of limited daytime and overnight closures, SR 89A will remain open to traffic during the project.



What to Expect

- Single-lane closures with alternating north- and southbound travel.
 - Flaggers or temporary traffic signals to control traffic.
 - Temporary concrete barrier.
- 24/7 restrictions during bridge and drainage/sediment control work.
- No anticipated full closures on weekends or holidays.







What to Expect

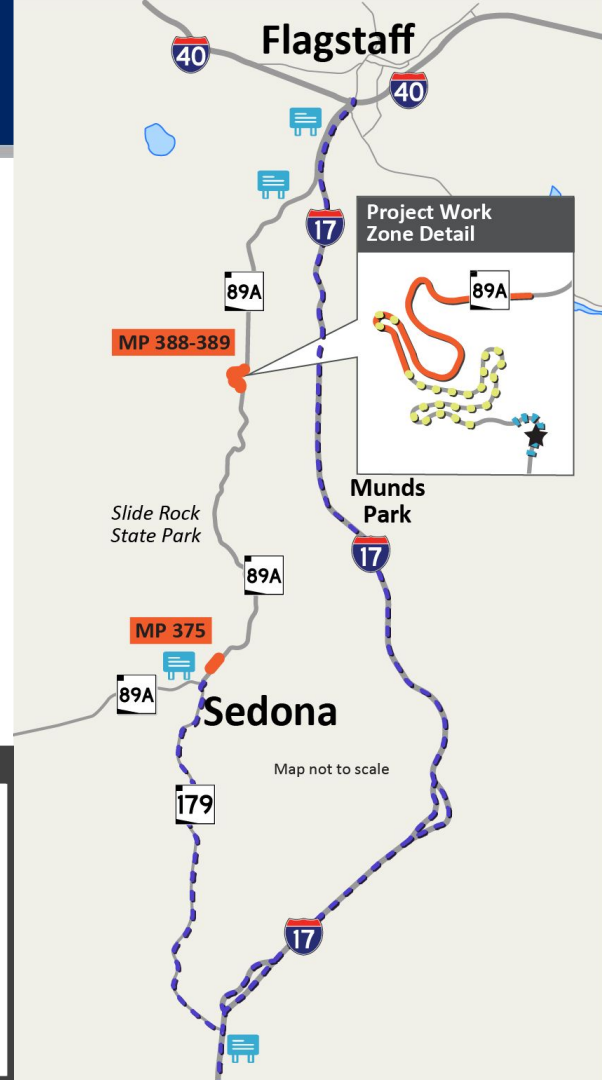
- Up to 5 daytime and 10 overnight full closures.
 - Signed detour will be provided during closures.
- 8-ft width/30-ft length vehicle restrictions in work zones.
- Message board notifications 7 days prior to full closures.

Detours

- Detours will be in place while full closures of SR 89A are in effect.
- Sedona to Flagstaff: use SR 179 to I-17.
- Flagstaff to Sedona: use I-17 to SR 179.
- Message boards in multiple locations
- Signed detour route will be provided.

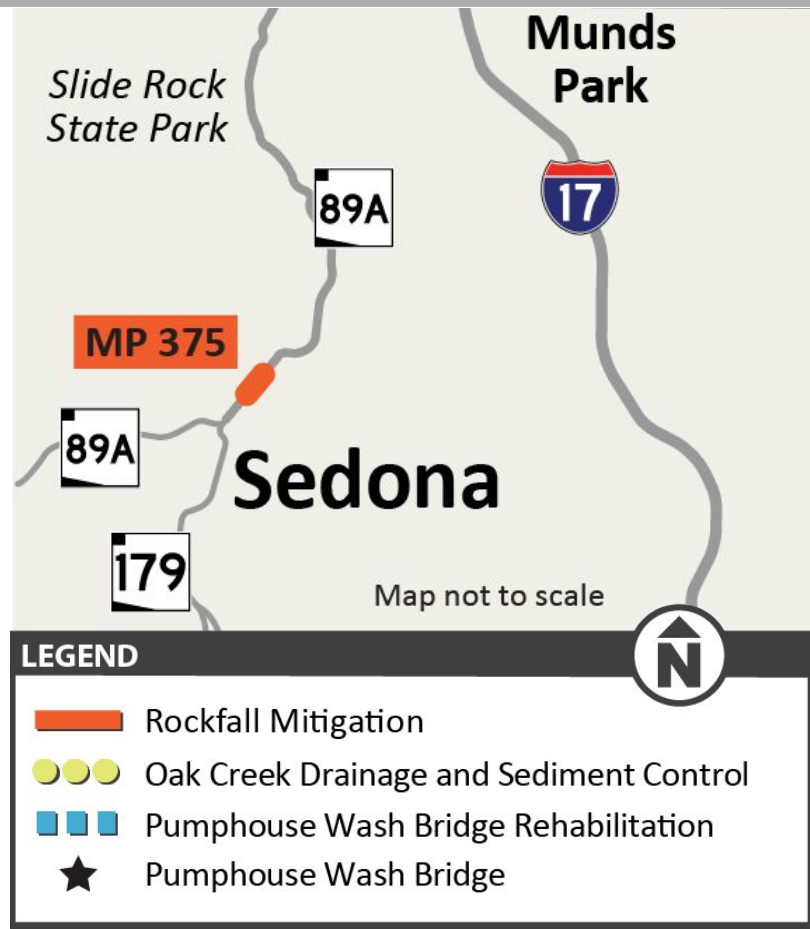
LEGEND

-  Rockfall Mitigation
-  Oak Creek Drainage and Sediment Control
-  Pumphouse Wash Bridge Rehabilitation
-  SR 89A Detour Route
-  Pumphouse Wash Bridge
-  Message Boards



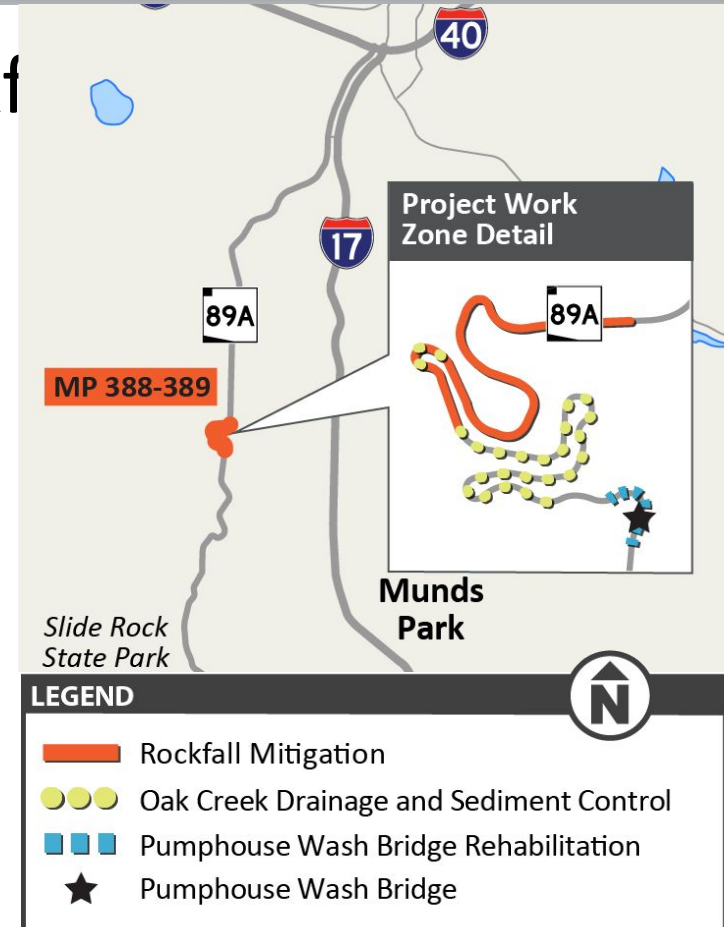
Closures: South Work Zone Rockfall Mitigation

- Up to five daytime full closures:
 - 6 a.m. to 4 p.m.
 - Consecutive or non-consecutive.
 - Sunday through Thursday.
 - Targeted to occur between mid-May and late July 2023.



Closures: North Work Zone Rockfall Mitigation & Drainage/Sediment Control

- Up to 10 overnight full closures:
 - 9 p.m. to 6 a.m.
 - Consecutive or non-consecutive.
 - Sunday night through Friday morning.



Restrictions: Bridge Rehabilitation

- 24/7 lane restrictions
- Intermittent traffic stops for deck replacement:
 - 15-minute non-consecutive closures.
 - No more than twice per hour.
 - 9 p.m. to 6 a.m.



Construction Activity Recap

- 10 full overnight closures.
- 5 full daytime closures.
- Single-lane closures with flagger operation through the work zones.
- Single-lane closure with temporary traffic signal while bridge & sediment control work is underway.
- 250 contract work days – expected completed late 2023.

Be in the Know!

ADOT

f t in ig .. You Tube

subscribe for updates

About Motor Vehicles **Projects** Business Planning News Traffic Maps Contact

Home » Projects » Northcentral District Projects

Northcentral District Projects

This section provides information about projects in the construction phase. Learn more about projects in the study/decision-making phase under Planning / Transportation Studies.

- [I-15 Virgin River Bridge No. 1](#)
- [I-17: Intelligent Transportation System \(ITS\) Infrastructure Installation](#)
- [I-17: Verde River Bridge Improvements](#)
- [Interstate 40: A-1 Mountain Road Bridge Replacement - Flagstaff](#)
- [I-40: Interstate 17 to Walnut Canyon Road](#)
- [I-40: West Flagstaff Bridge Replacement](#)
- [Rio de Flag Bridge Replacement](#)
- [SR 87 Pine Creek Canyon Drive to SR 260](#)
- [SR 89A Oak Creek Canyon Improvements](#)**

Projects

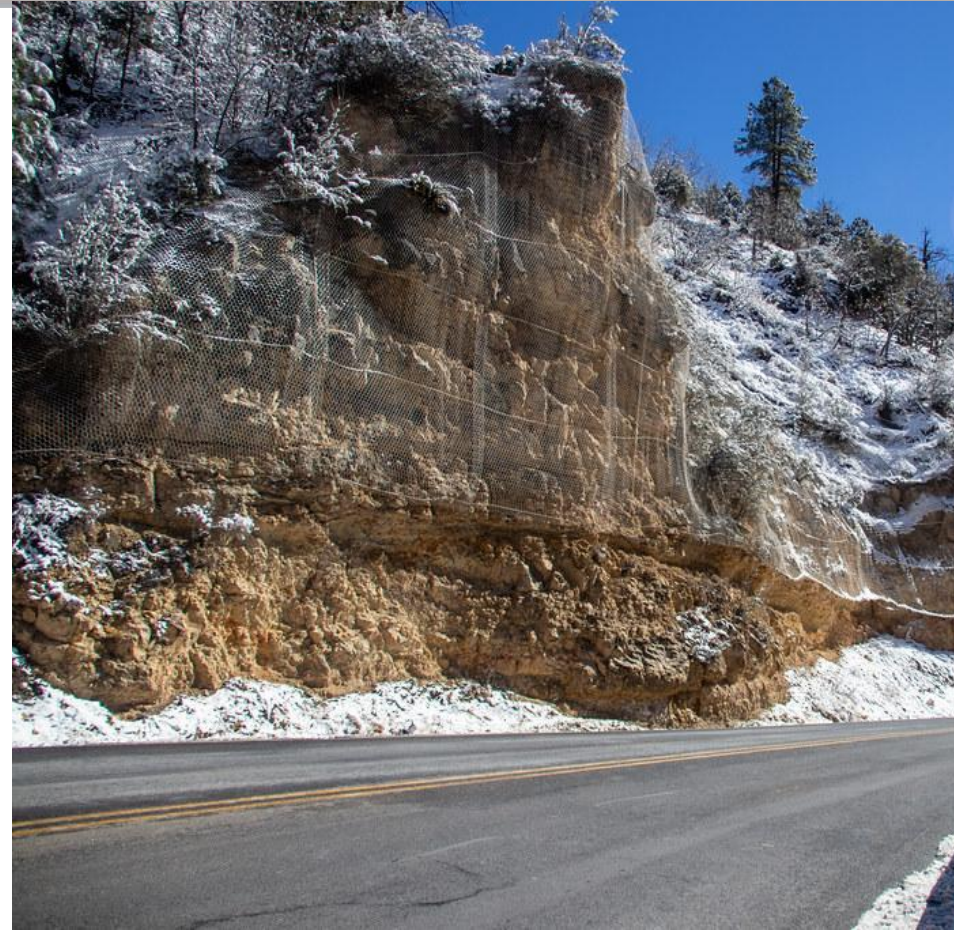
- [Wrong-Way Vehicle Detection Pilot Program Report - June 2020](#)
- [Maintenance Budget](#)
- [Project Investment Categories](#)
- [Current Restrictions and Weekend Travel Advisory](#)
- [Central District Projects](#)
- Northcentral District Projects**
 - [I-15 Virgin River Bridge No. 1](#)
 - [I-17: Intelligent Transportation System \(ITS\) Infrastructure Installation](#)
 - [I-17: Verde River Bridge Improvements](#)
 - [Interstate 40: A-1 Mountain Road Bridge Replacement - Flagstaff](#)
 - [I-40: Interstate 17 to Walnut Canyon Road](#)
 - [I-40: West Flagstaff Bridge Replacement](#)
 - [Rio de Flag Bridge Replacement](#)

Visit: azdot.gov/SR89A

subscribe for updates

Q & A

- Use Q&A for written questions.
- Press *3 to ask a question by phone.
- Will do our best to take questions in order. We may combine similar questions/comments.
- Please limit questions to 1 minute to allow others to speak.

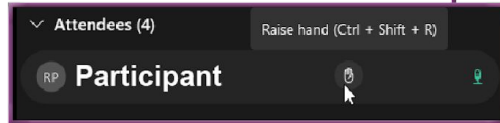


Raising Your Hand

Call Webex Help:
866.229.3239

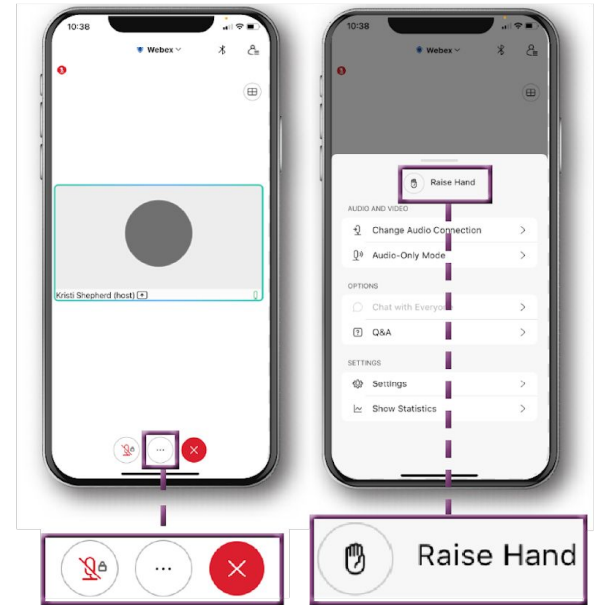
ADOT

Webex App & Online



1. Select "Participant" panel
2. Find your name
3. Click on the "hand" icon (raise/lower)

Mobile App



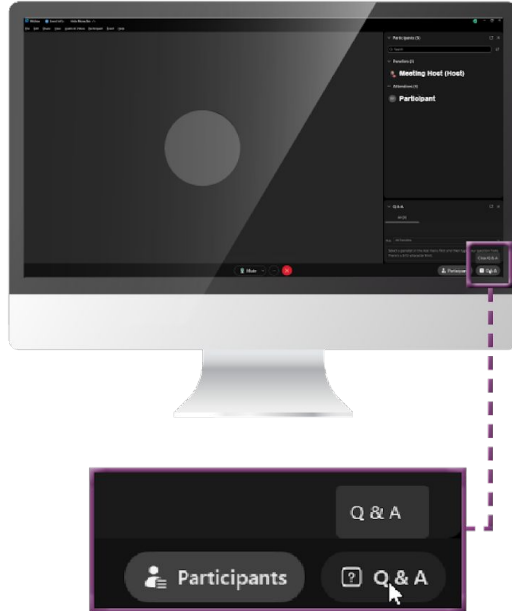
1. Click three dot menu icon
2. Click "Raise Hand" icon
3. To lower, click icon again

Asking a Question

Call Webex Help:
866.229.3239

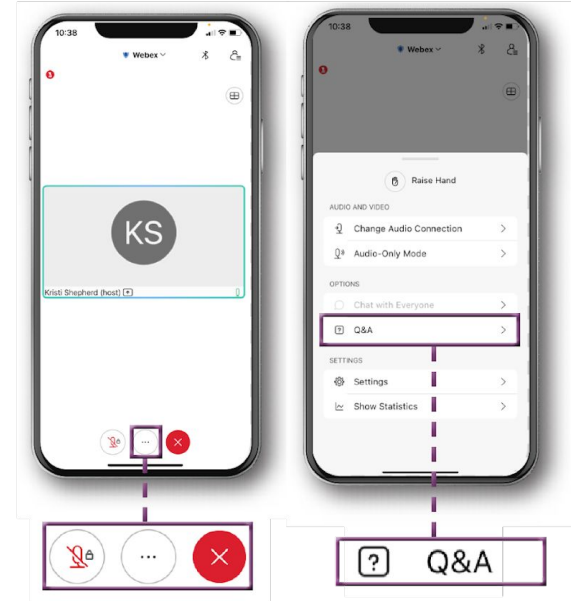
ADOT

Webex App & Online



1. Open the "Q&A" panel
2. "Q&A" panel will pop up
3. Type your question, hit send

Mobile App



1. Click three dot menu icon
2. Click "Q&A" tab
3. Type your question, hit send

How to Reach Us



Comment form at azdot.gov/SR89A



Bilingual Project Information Line at 855.712.8530

Teléfono: Línea de Información del Proyecto ADOT: 855.712.8530



ADOT Community Relations

c/o Jason Stephens

1655 W. Jackson St. MD 126F

Phoenix, AZ 85007

Thank you!



azdot.gov/SR89A

Pumphouse Wash Bridge Rehabilitation

- Bridge deck and railing replacement.
- Pier encasement and scour mitigation.
- Restore culvert drainage outlet.
- Replace approach slabs.
- Paint bridge.
- Other related work.



Contracting Approach

- Projects were originally advertised separately but bids too high \$
- One contractor for all 3 projects.
 - Reduces construction duration.
 - Reduces cost.
 - More efficient.

