

Arizona State Freight Plan HIGHWAYS AND BRIDGES

FEBRUARY 2022



PAVEMENT AND BRIDGE INVENTORY AND CONDITION

The condition of Arizona's freight system is the result of a variety of factors such as transportation system demand, economic conditions, the quality and timing of operations and maintenance, funding availability, and private sector investment. Understanding these current conditions is a critical input to the statewide freight planning process.

LANE MILES

IN ARIZONA, THERE ARE
OVER
66,000
PUBLIC ROAD MILES

OF THOSE
ADOT MAINTAINS

OVER
21,000
LANE MILES OF
STATE HIGHWAYS

BRIDGES

IN ARIZONA, THERE ARE
OVER
8,400
BRIDGES

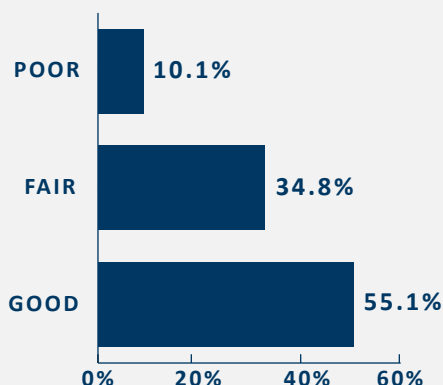
OF THOSE
ADOT MAINTAINS

OVER
4,900
BRIDGES

CONDITION

PAVEMENT

PAVEMENT CONDITION OF THE ARIZONA HIGHWAY SYSTEM



BRIDGE



38
STRUCTURALLY
DEFICIENT BRIDGES



3
POSTED FOR LOAD
RESTRICTIONS



142
BRIDGES WITH
VERTICAL CLEARANCE
LESS THAN 15 FT.

SUPPORTING INFRASTRUCTURE



129
PUBLIC/PRIVATE TRUCK
PARKING FACILITIES



23
WEIGH STATIONS



15
RUNAWAY TRUCK
RAMPS



14
LAND PORTS OF ENTRY



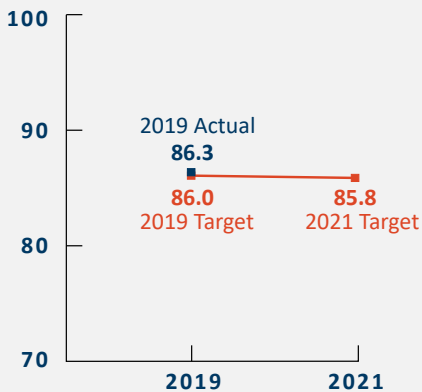
6
INTERNATIONAL
BORDER CROSSINGS



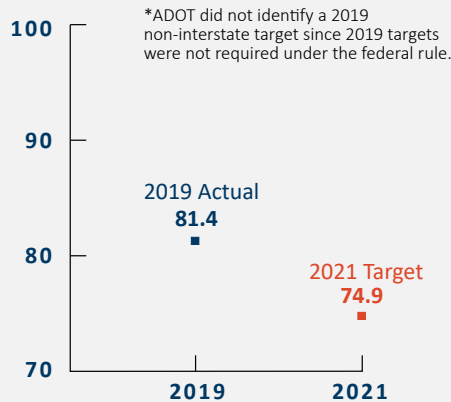
RELIABILITY

Travel time reliability is the ability of travelers to reach their destination in a consistent and dependable amount of time. A highway’s travel time may be reliable and still experience slowdowns, but these slowdowns are predictable and recurring (rush hour for example). Freight carriers also require dependable travel times to remain competitive.

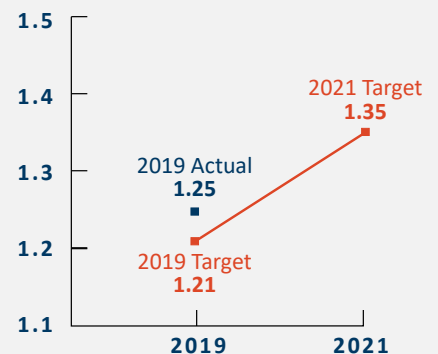
Interstate Highway Reliable Person-Miles Traveled



Non-Interstate Highway Reliable Person-Miles Traveled



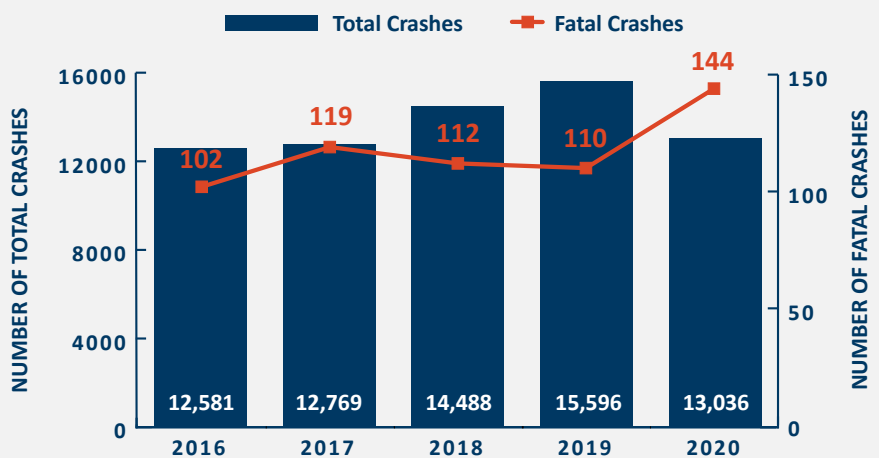
Interstate Highway Truck Travel Time Reliability Index



SAFETY

The 2019 Arizona Strategic Highway Safety Plan indicated that heavy vehicles can be attributed to approximately 13 percent of all fatalities and 10 percent of serious injury crashes in Arizona. In addition to the loss of life and injuries, crashes can impact goods movements and supply chains by damaging goods or causing delays. Crash data analysis helps identify trends and patterns, and provides insight on specific roadway locations that may be more hazardous than others for trucks and passenger vehicles.

Truck Related Crash Trends (2016-2020)



While the total number of truck-involved crashes decreased in 2020, fatal truck-involved crashes increased by 30%.

The condition and performance of the freight transportation system is critical in providing efficient and reliable transport of people and goods across Arizona and for improving the state’s economy.