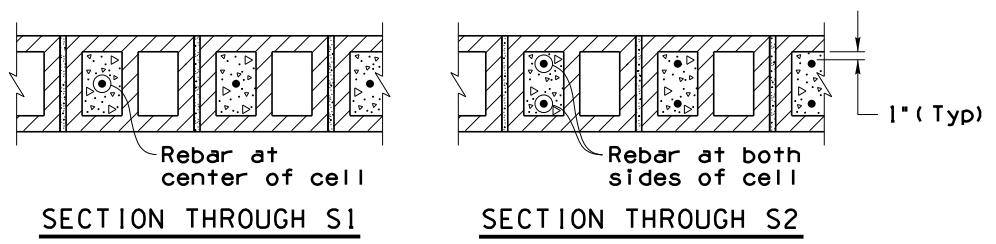
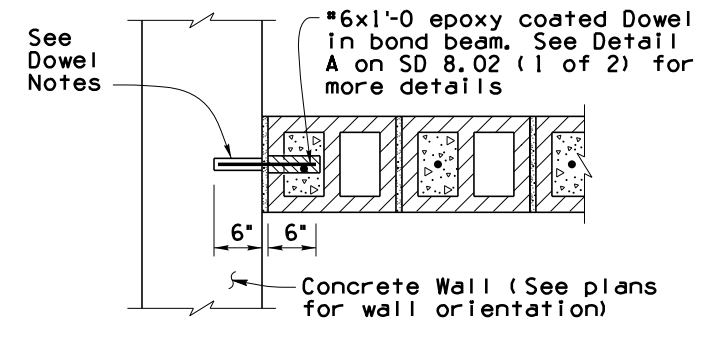


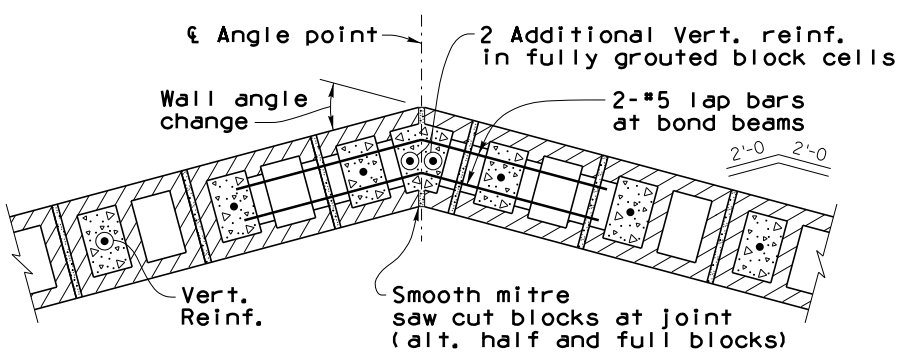
Note to Designer: The information presented in this Standard Drawing has been prepared in accordance with recognized engineering principles and is for general use. It should not be used for specific application without the approval of a professional engineer. The information is intended to be used as a guide and its applicability by a licensed professional engineer. Contents within the inner border line shall not be altered.



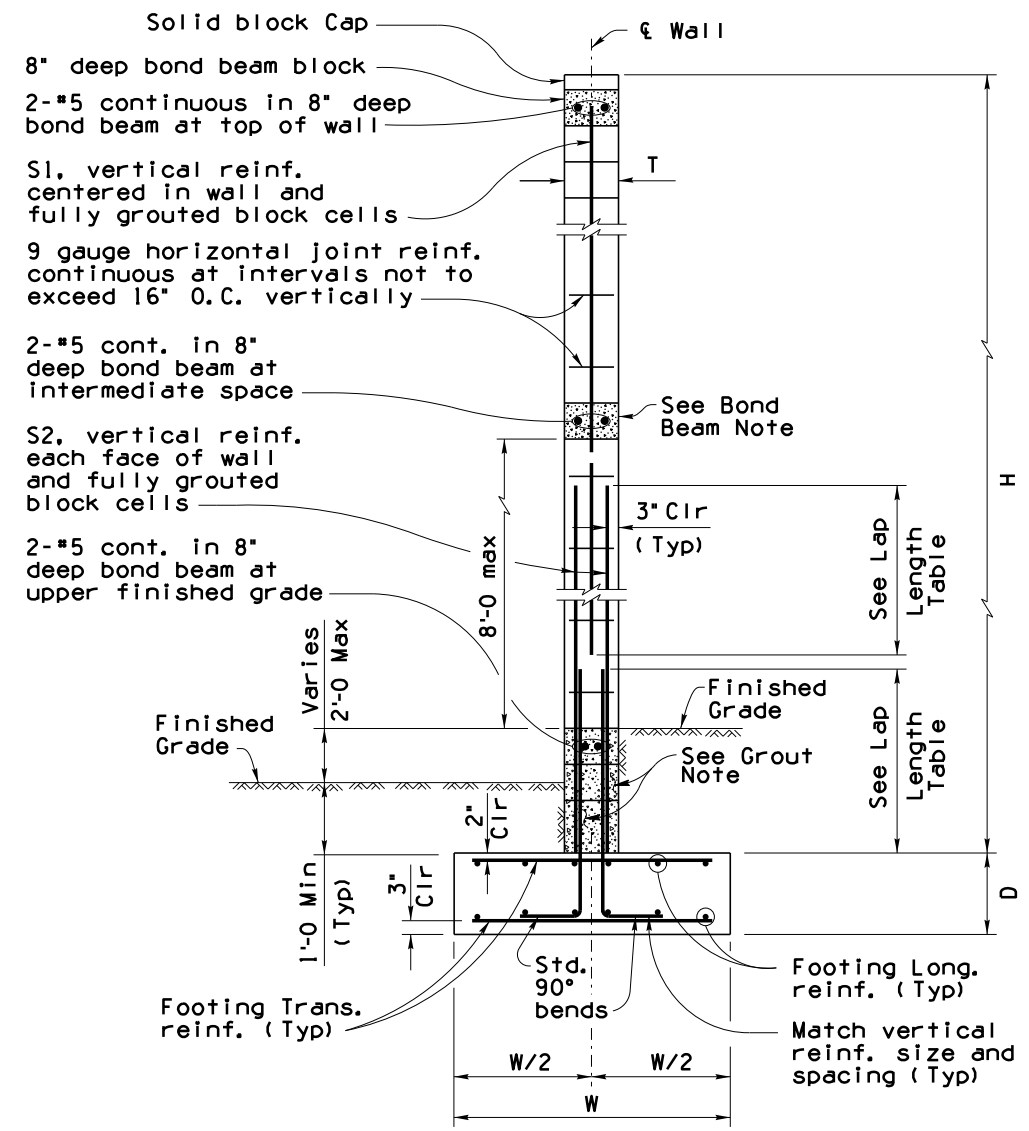
TYPICAL SECTIONS THROUGH VERTICAL WALL REINFORCEMENT



CONNECTION TO CONCRETE WALL



SECTION AT WALL ANGLE POINT



TYPICAL WALL SECTION (For Wall Height 14'-0 to 26'-0)

GROUT NOTE:
Fully grout all block cells below the upper Finished Grade Line.

NOTE:
See SD 8.02 (1 of 2) "Wall Details at Joints and Ends" for details not shown on this sheet.

MATERIAL NOTES:

- Masonry: f'm = 1500 psi, ASTM C90, Medium or Normal weight, Running Bond, SLUMP BLOCK unless noted otherwise.
- Mortar: ASTM C270, Type S, Cube Strength 1800 psi ASTM C91 cement
- Grout: ASTM C476, Type Coarse, Cube strength 2000 psi
- Reinforcing Steel: ASTM A615, Grade 60
- Joint Reinforcing: 9 Gauge Ladder or Truss type, Standard weight, fy=33,000 psi, ASTM A82 Wire

SPECIAL INSPECTION NOTES:

- Special inspection and testing, provided by the Department, are required for the masonry noise wall stem to assure quality materials and construction.
- (A) Pre-construction:
- 1) Verify correct block type to be used.
 - 2) Verify correct mortar and grout to be used.
 - 3) Verify the location, spacing, size and lap length of vertical reinforcing dowel bars and wall reinforcement that is within plus or minus 1/2" of the plan dimension as measured normal to the wall and plus or minus 2" in the longitudinal direction.
 - 4) Verify that masonry units are clean and free from dirt when placed in the wall. Masonry units shall be dry before placement.

- (B) Construction:
- 1) Observe, periodically, the placement of the masonry units and the making of the mortar. Verify that the initial bed joint thickness is not less than 1/4" or more than 1"; subsequent bed joints shall not be less than 1/4" or more than 3/8" in thickness.
 - 2) Observe all grout placements.
 - 3) Verify horizontal joint reinforcing size, location, and spacing.
 - 4) Verify that all concrete masonry units are placed in uniform and true course, level and plumb with a tolerance of 1/4" in 8 feet, non-cumulative.
 - 5) Verify that concrete masonry units are placed to the desired height with joints of uniform thickness. Level, plumb and straighten before the mortar stiffens. Bond shall be plumb throughout.
 - 6) Verify that all concrete masonry units are cured by sprinkling twice a day for minimum of 2 days.

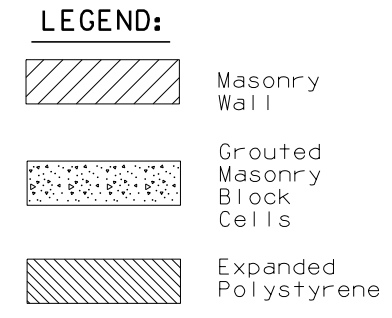
DOWEL NOTES:

Drill 1 inch diameter hole 6 inches deep for #6 dowel. Epoxy dowel in hole with an approved epoxy adhesive. Epoxy anchorage shall develop a tensile pullout strength of 13 kips. Details of the anchorage system shall be submitted to the Engineer for approval prior to installation.

Dowel placement includes drilling or coring dowel holes, furnishing and placing setting materials and placing metal dowels in the drilled or cored holes.

WALL SCHEDULE								
Wall Design Height H	** Wall Thick T	Footing Depth D	Footing Width W	*** Reinforcing Steel				Factored Average Soil Bearing Pressure (psf)
				Wall		Footing		
				S1 Vert. Reinf.	S2 Vert. Reinf.	Trans. Reinf.	Long. Reinf.	
14'-0 to 15'-11	12"	1'-9	6'-0	#5@16"	#5x6'-6 @ 16"	#5@16"	#5@16"	1,900
16'-0 to 17'-11	12"	2'-0	6'-3	#6@16"	#6x6'-6 @ 16"	#6@16"	#5@16"	2,100
18'-0 to 19'-11	12"	2'-3	6'-6	#8@16"	#6x7'-0 @ 16"	#6@16"	#5@16"	2,300
20'-0 to 21'-11	12"	2'-6	6'-9	#8@16"	#7x8'-0 @ 16"	#6@16"	#5@16"	2,600
22'-0 to 23'-11	12"	2'-9	7'-3	#8@16"	#7x8'-6 @ 16"	#6@16"	#5@16"	2,800
24'-0 to 26'-0	12"	3'-0	7'-6	#8@16"	#7x9'-0 @ 16"	#6@16"	#5@16"	3,000

** Nominal Dimension *** Additional Reinf. required at Control Joints



STANDARDS ENGINEER
A. ALZUBI
RECOMMENDED FOR APPROVAL
GROUP MANAGER
D. EBERHART
APPROVED
STANDARDS COMMITTEE APPROVED FOR DISTRIBUTION

ARIZONA DEPARTMENT OF TRANSPORTATION
INFRASTRUCTURE DELIVERY AND OPERATIONS DIVISION
BRIDGE GROUP STANDARD DRAWING

SOUND BARRIER WALL MASONRY

DRAWING NO.
SD 8.02 (2 of 2)

DATE: 06/22