

# Arizona Motor Vehicle **CRASH FACTS**

# 2021

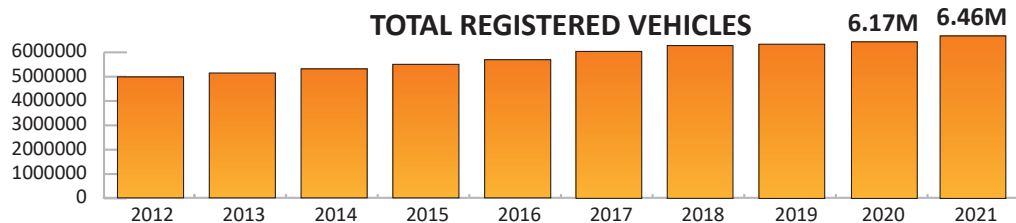
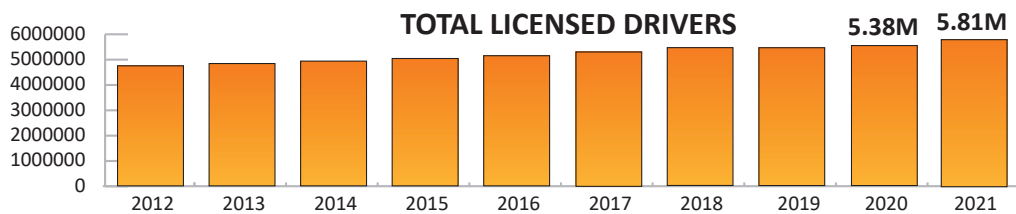
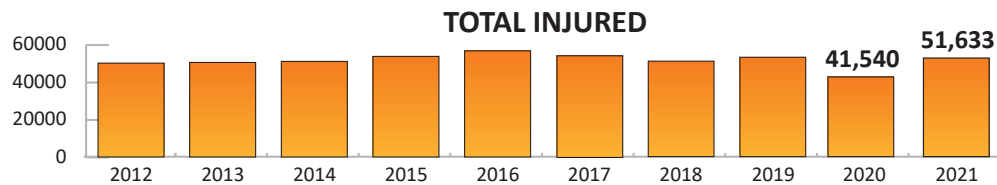
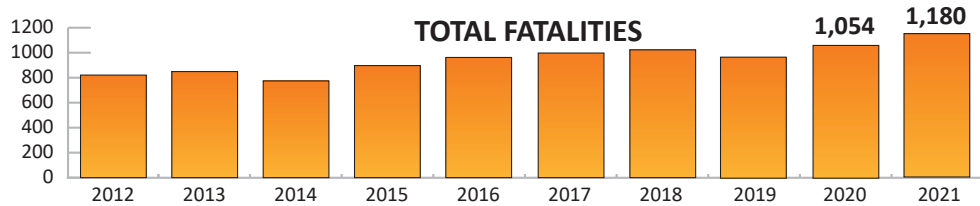
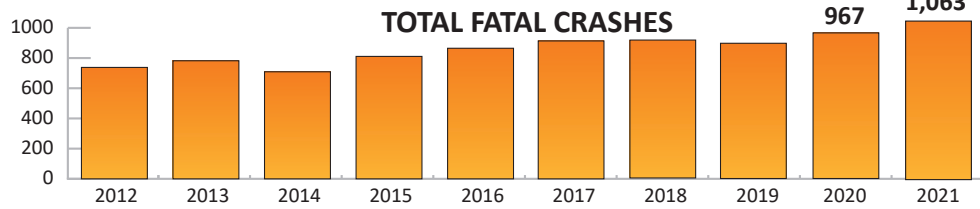
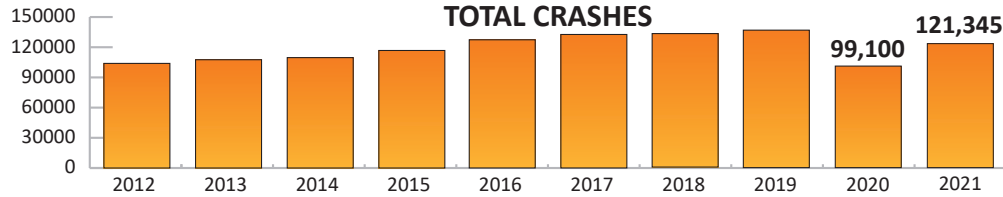


[azdot.gov/CrashFacts](http://azdot.gov/CrashFacts)



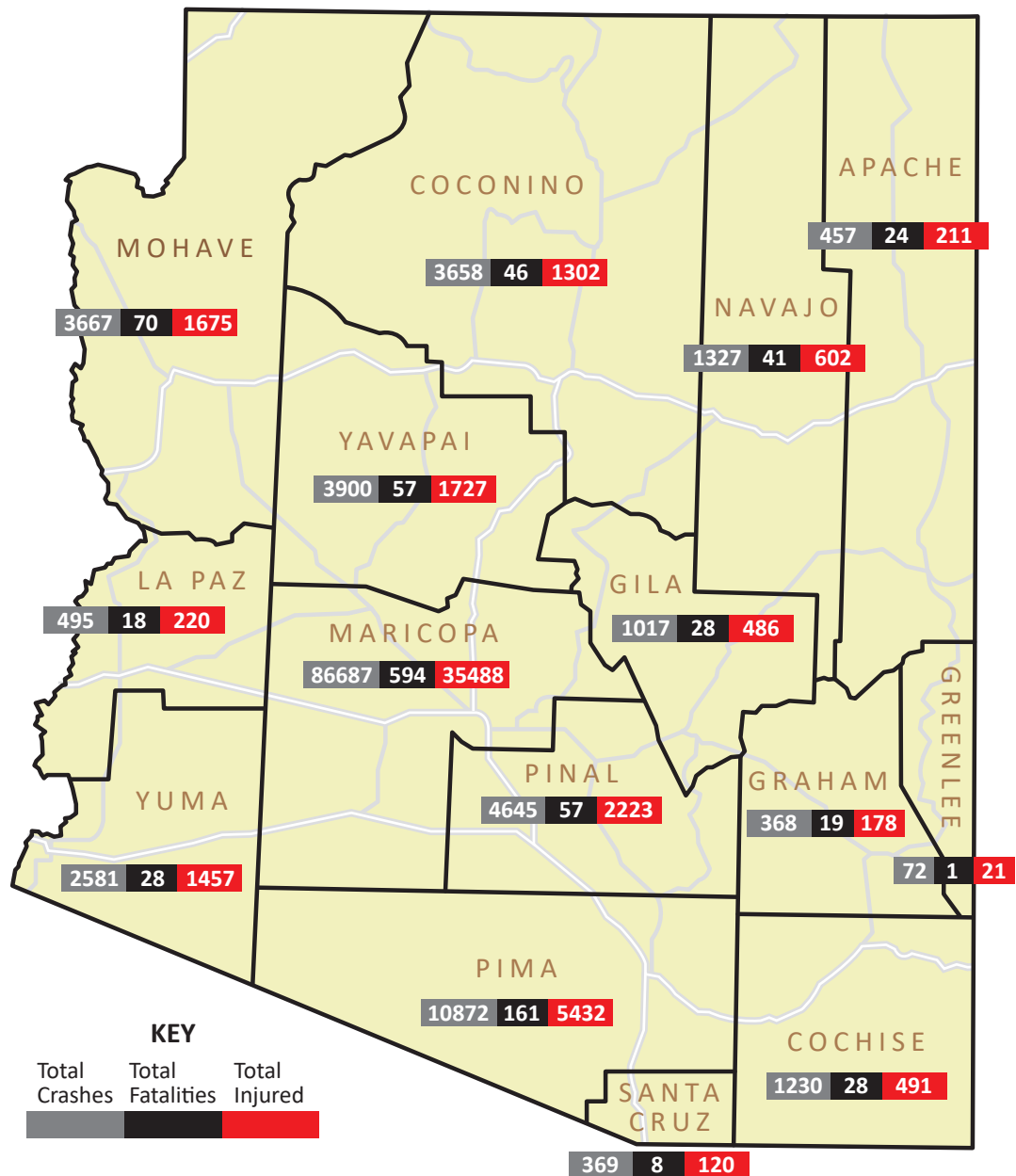
**ADOT**

# HISTORICAL TRENDS



Reducing the number of crashes, serious injuries and fatalities begins with drivers choosing to make safer decisions. Driver behavior is a leading factor in more than 90% of crashes. Speeding, impairment, aggressive driving and distracted driving are primary contributors to the rising number of traffic fatalities and those are all actions drivers can choose not to engage in.

# TOTAL CRASHES, FATALITIES AND INJURED BY COUNTY



Crashes occur on all kinds of roadways, from heavily-traveled freeways to back-country switchbacks. Of the 121,345 collisions in 2021, 32% happened on the state highway system, while 68% occurred on other roadways, such as city streets and county roads.



# DRIVER BEHAVIOR BREAKDOWN



359


359 people were killed in speed-related crashes.

Speeding is the most common driver violation and rear-end collisions are the most common type of crash.

284

284 people killed in crashes were not wearing seat belts.

Nine in 10 Arizonans buckle up, but about a quarter of all those killed every year on our roads aren't wearing seat belts.

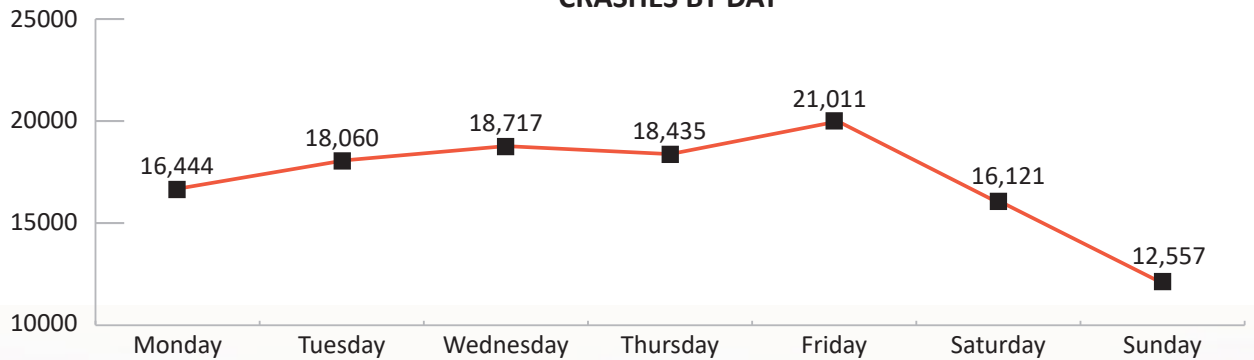


In 2021, 121,345 motor vehicle crashes killed 1,180 people and left 51,633 people injured. Poor decisions made by drivers – speeding, impairment, reckless driving and not wearing a seat belt – are leading factors in traffic fatalities. Drivers hold the key to reducing these figures – choose to make smart decisions behind the wheel, making roads safer for everyone.

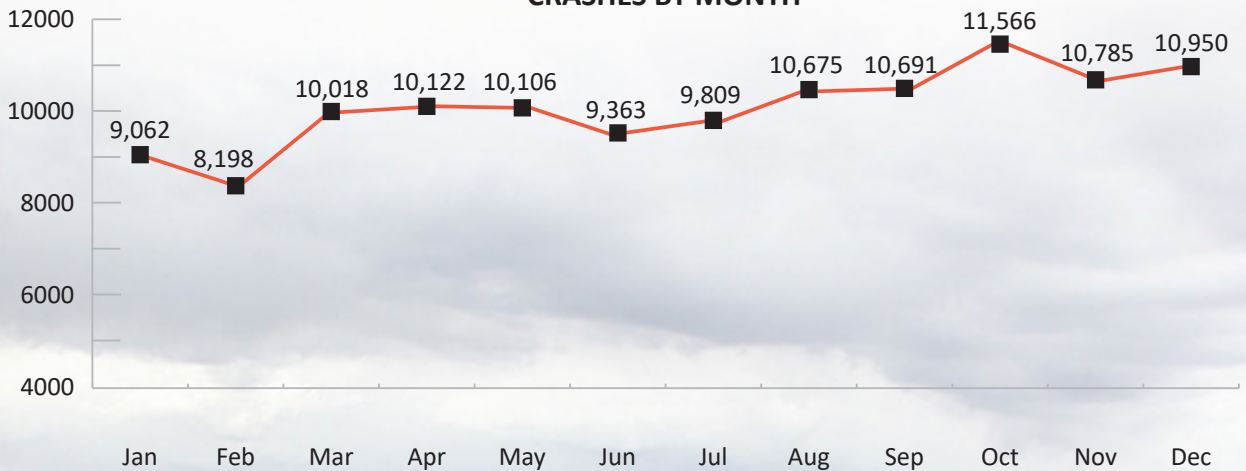
# CRASH BREAKDOWN



CRASHES BY DAY



CRASHES BY MONTH

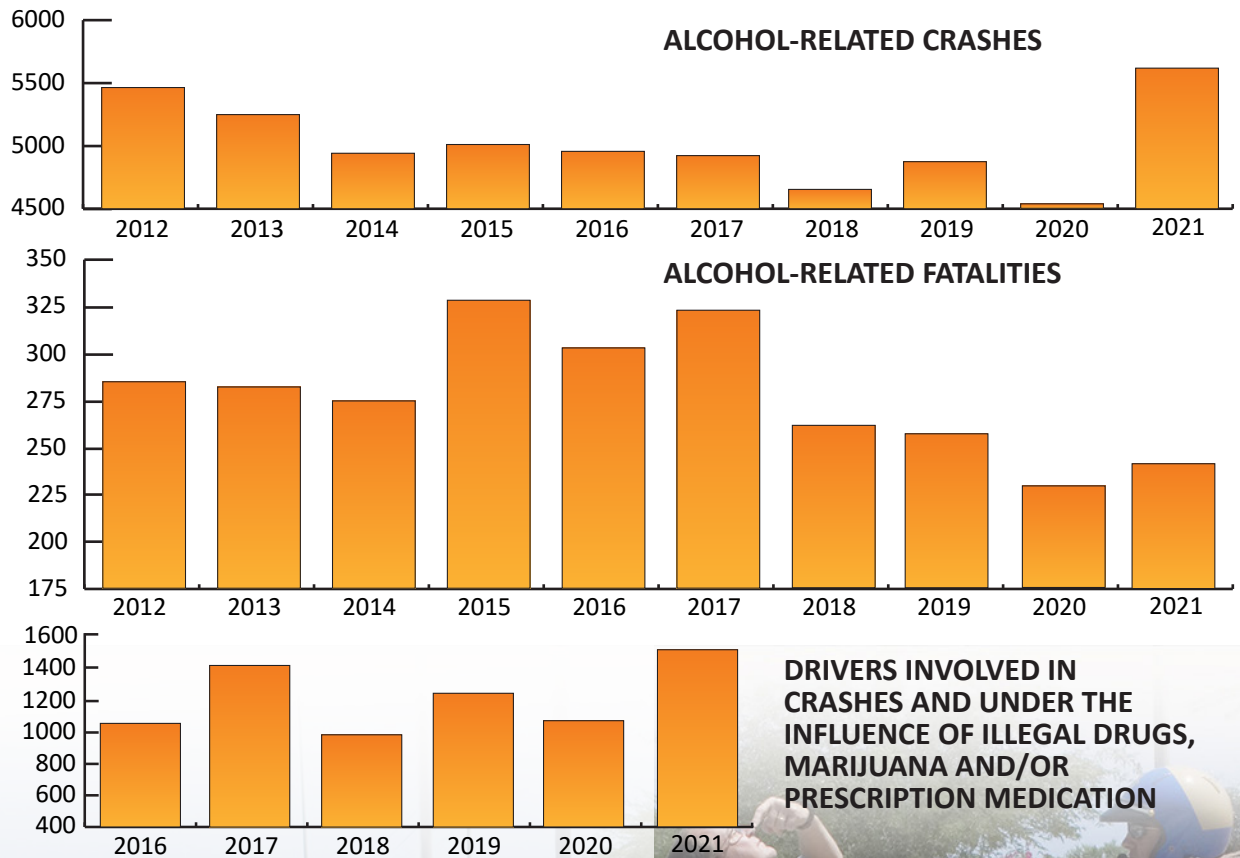


In 2021, more crashes happened in October than any other month of the year and Fridays saw more crashes than any other day of the week. December 15, 2021, had the most crashes on Arizona roads with 514 crashes and there was a tie for days with the most number of fatal crashes with eight (June 4 and Oct. 29).

During weekdays, most crashes occurred between 3-5 p.m. On weekends, crashes spiked between 6-7 p.m.

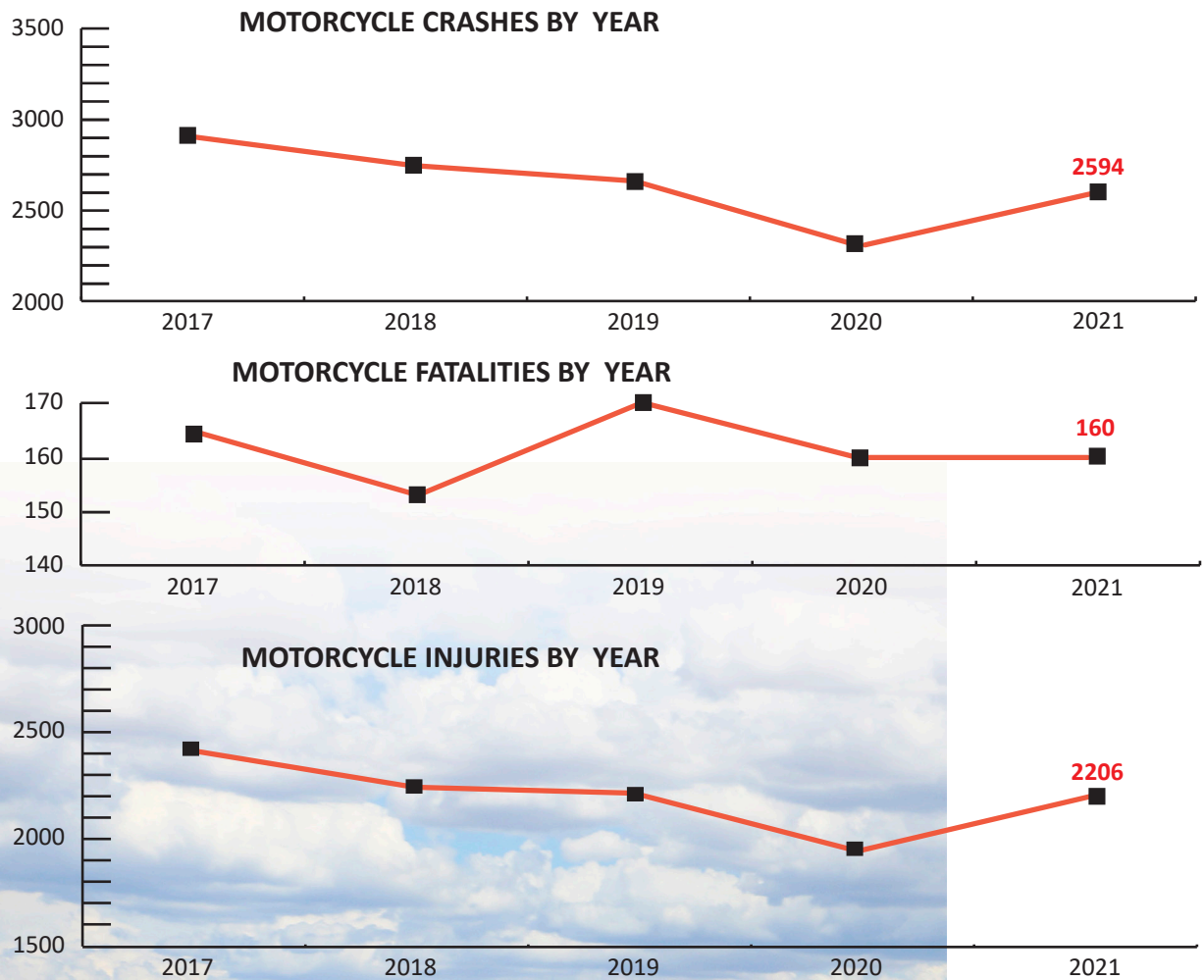


# IMPAIRED DRIVING



In 2021, 383 people were killed in impairment-related crashes. These crashes, which involve alcohol, illegal drugs, prescription medication or marijuana, account for about 6% of all crashes and 32% of fatal crashes.

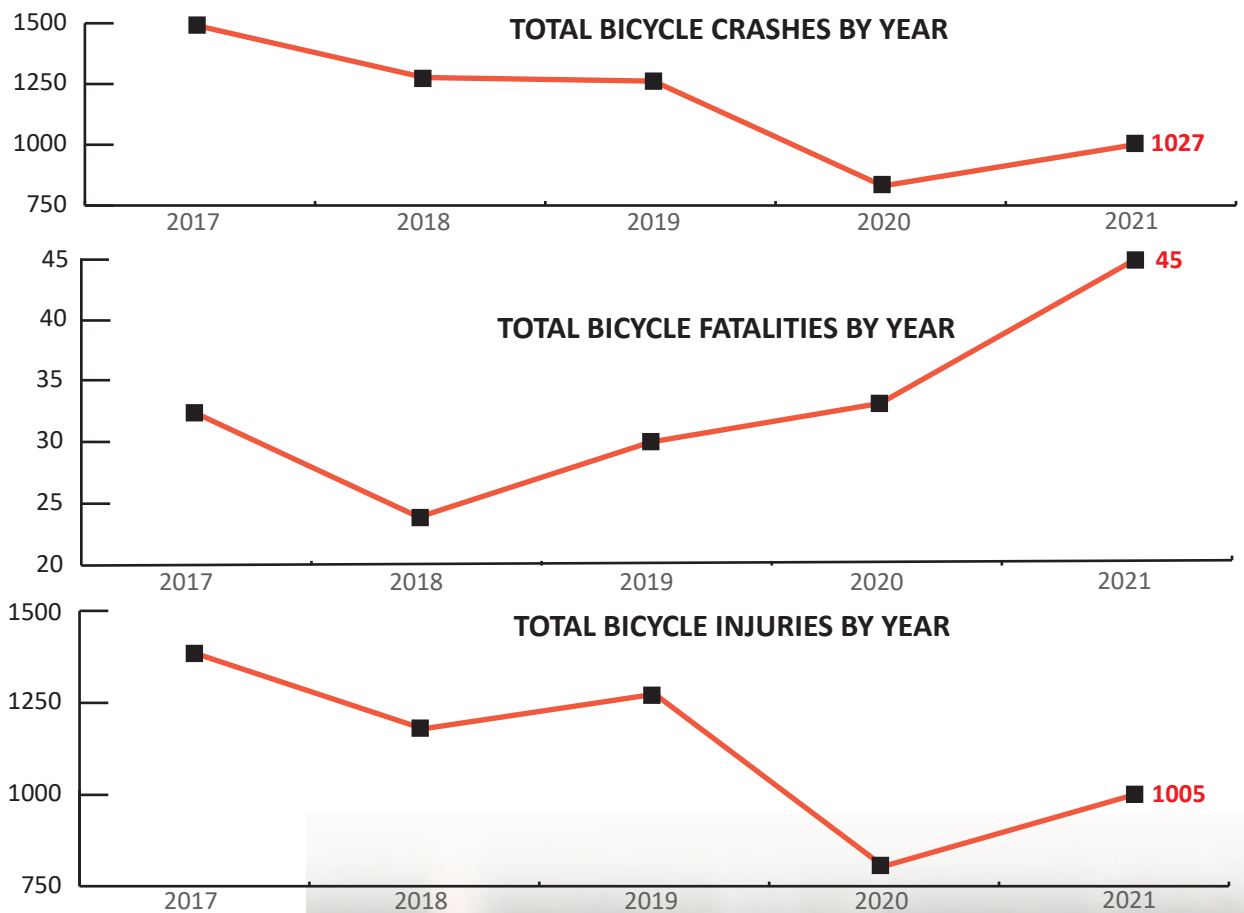
# MOTORCYCLES



At least 69 of the 160 motorcycle operators or passengers killed in 2021 were not wearing a helmet.



# BICYCLISTS



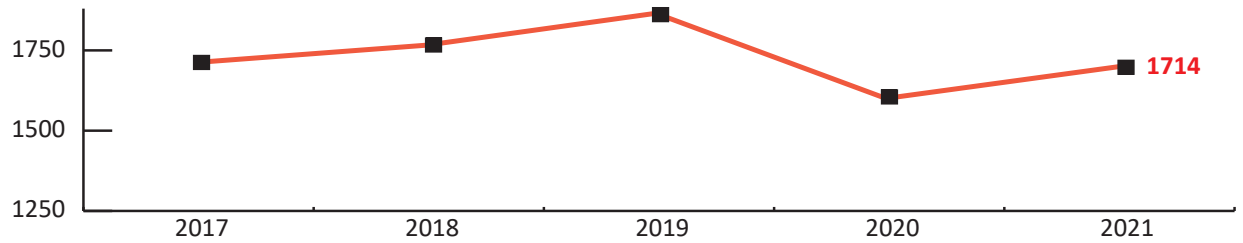
Ninety-two percent of bicycle crashes occurred in urban areas and nearly 3 out of 4 occurred during daylight hours. Drivers should watch for bikes, especially those traveling against traffic and on sidewalks, and bicyclists should watch for turning vehicles.



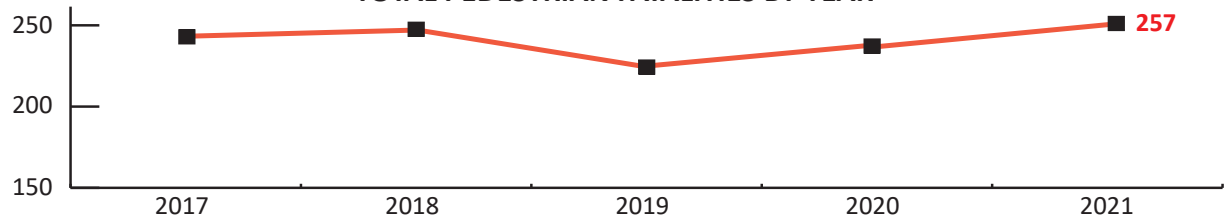


# PEDESTRIANS

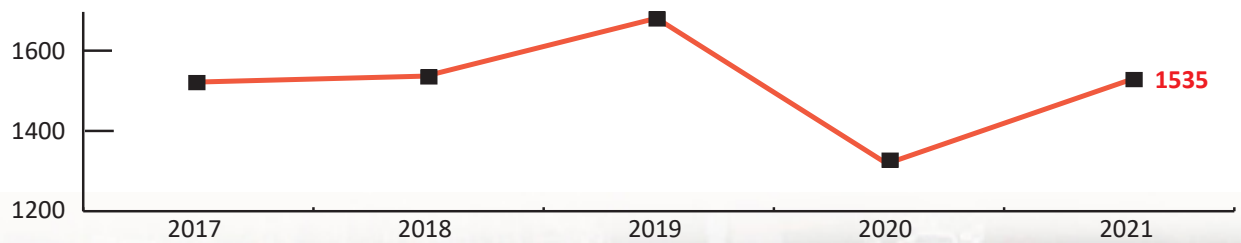
TOTAL PEDESTRIAN CRASHES BY YEAR



TOTAL PEDESTRIAN FATALITIES BY YEAR



TOTAL PEDESTRIAN INJURIES BY YEAR

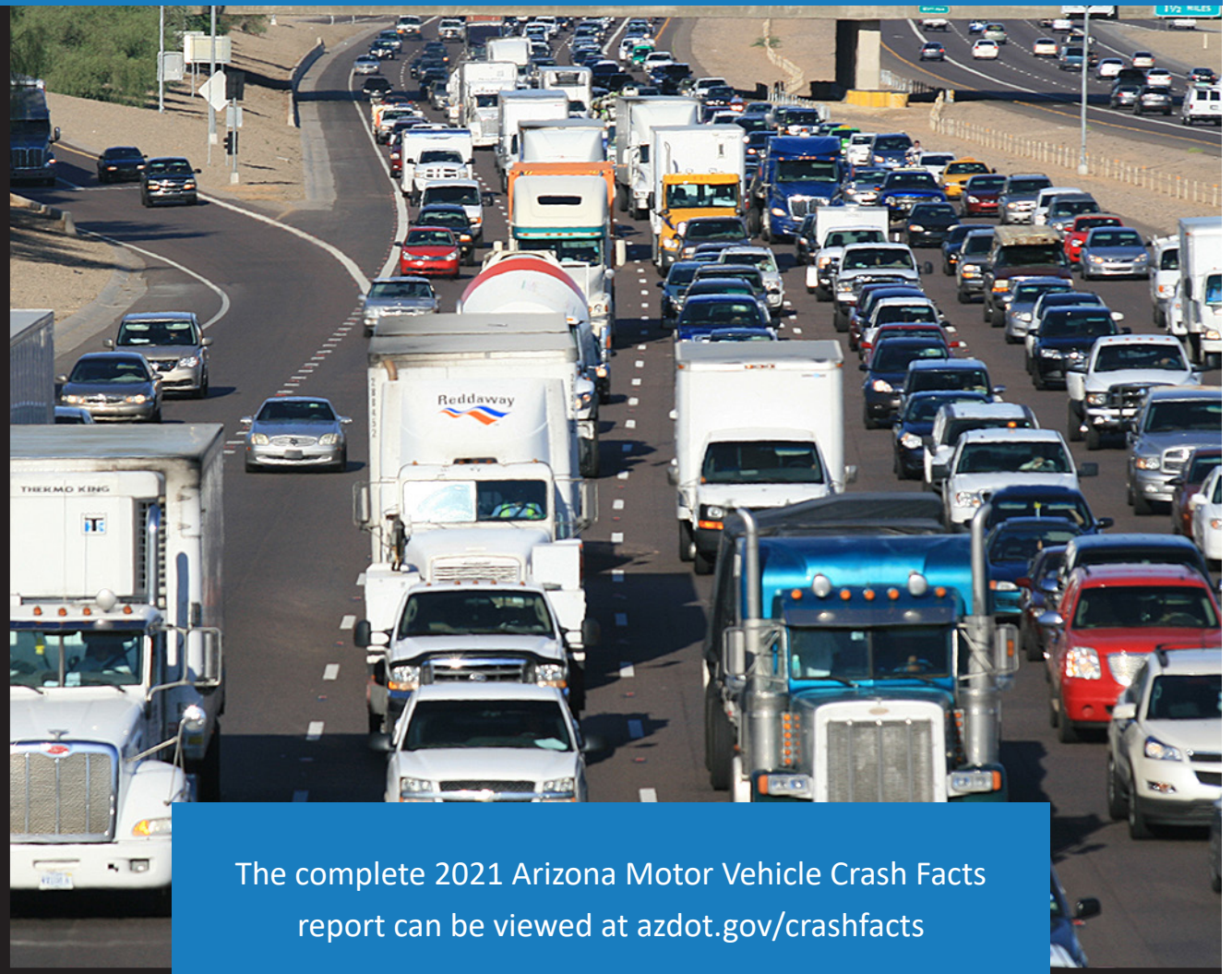


Half of pedestrian crashes occur during daylight, dawn or dusk conditions, but about 72% of the pedestrians killed on Arizona roads in 2021 were struck at night when vehicle speeds are typically faster and pedestrians are harder to see.

# FOR INQUIRIES AND MORE INFORMATION



The information in this publication is compiled from Arizona Traffic Crash Reports submitted to the Arizona Department of Transportation by state, county, city, tribal and other law enforcement agencies. Specific inquiries regarding this data should be directed to: [azcrashfacts@azdot.gov](mailto:azcrashfacts@azdot.gov)



The complete 2021 Arizona Motor Vehicle Crash Facts report can be viewed at [azdot.gov/crashfacts](http://azdot.gov/crashfacts)