

# PROJECT DELIVERY ACADEMY

## MODULE 6: CONSTRUCTION CLOSEOUT AND MAINTENANCE



**Presented by:**

**Philip Schaffer**

**Project Resource Office**

## Topics:

- Record Drawings (PKA As-Builts)
- ROAD Portal



# PROJECT DELIVERY ACADEMY

## MODULE 6: CONSTRUCTION CLOSEOUT AND MAINTENANCE

- **Record Drawings** Are a full set of As-Bid engineering plans that show all of the field changes that occurred during construction.

- ROAD PORTALS

# PROJECT DELIVERY ACADEMY

## Record Drawings



*"We're not that well organized, but we know where everybody is."*



**DISORGANIZED!**

# PROJECT DELIVERY ACADEMY

## Record Drawings

Created a web page to pull all of the record drawing resources to one location.

### Record Drawing Guidelines

#### Frequently Asked Questions

- What are Record Drawings?
- Why do we need them?
- Where can I find Record Drawings for a particular project?
- How do I prepare Record Drawings for ADOT?
- How do I submit Record Drawings to ADOT?
- What is a PDF/A and how do I prepare PDF/A's for submittal to ADOT?
- What is a "Quantlist" and why is there no more Quantlist for Field Red-Lines?

#### Common Mistakes in Preparing Record Drawings

In an effort to streamline the submittal and review of record drawings, below are the common mistakes we are seeing when record drawings are submitted to the Project Resource Office (PRO). Please [contact](#) our office if there are any questions or you are unsure about something.

- Quality of the final submittal
- Submittal not a PDF/A document
- Submittal not being reviewed by the RE (Construction Administrator)
- Projects with guardrail and barrier summary sheets
- Submittals that have a SWPPP sheet

**Updates will be posted whenever they become available. It is your responsibility to check back to make sure you have the current file.**

All Record Drawings must now be submitted in PDF/A format to [Record Drawings](#).

- [Record Drawing Project Submittal Form](#) Revised June 2019.
- [Record Drawing Guidelines](#) - Revised June 2019
- [Record Drawing Example Plan Set](#) - Revised April 2019
- [Record Drawing Process Flowchart](#)
- [Record Drawing Project Submittal Form](#) - Revised June 2019
- [Instructions for Record Drawing Project Submittal Form in DocuSign](#)
- [Record Drawing Preparation Estimate](#)
- [Repository of Online Archived Documents \(ROAD\)](#)
- [Instructions on using the ROAD portal](#)

#### Additional Resources

- [Certification Acceptance \(CA\) Agency Record Drawing Documentation Form](#)

# PROJECT DELIVERY ACADEMY

## Record Drawings



Located on the Project Resource Office Internet web site at:

[www.azdot.gov/business/ManagementServices/ProjectResourceOffice/record-drawing-guidelines](http://www.azdot.gov/business/ManagementServices/ProjectResourceOffice/record-drawing-guidelines)

## Project Management Services

### Project Resource Office

Overview	Active Project List: Project Managers Report	Scheduling Tools and Documentation
Websignon (PEP, E2C2, SURF, etc.)	Historical Bid Unit Price Lookup - E2C2	PRB and PPAC Calendars
Record Drawings Guidelines	ROAD - Repository of Online Archived Documents	

Overall, the Project Resource Office (PRO) is cooperatively responsible for information management regarding the program's scheduling, resources and budget. This section coordinates with project teams to create critical path schedules for programmed projects. PRO collects, updates and reports on project data and scheduling information (e.g., advertisement dates, project cost, milestone dates, etc.). It is this section's job to monitor project scope and budget changes and to schedule data. Its responsibility to report to management teams the status of projects is essential to proper planning and maintenance of projects in predesign, design and construction phases.

### Contact Us

ADOT Engineering Building  
205 S. 17th Ave.  
Phoenix, AZ 85007  
Phone: 602.712.7015

# PROJECT DELIVERY ACADEMY

## Record Drawings

### How are Record Drawings submitted?

- Record Drawings can be submitted several different ways.

ADOT ShareFile – Consultant FTP – Email

**NOTE:** Record Drawings must be submitted as a complete set of Record Drawings. We do not accept partial record drawing submittals.

**[RecordDrawings@azdot.gov](mailto:RecordDrawings@azdot.gov)**

*(We no longer require CD's and a hard copy of the plans!)*

## PROJECT DELIVERY ACADEMY

### Record Drawings

A [Record Drawing Project Submittal Form](#) is required with all submittals.

The forms are available on the Record Drawings web page.



RECORD DRAWING PROJECT SUBMITTAL FORM  
ARIZONA DEPARTMENT OF TRANSPORTATION  
Project Resource Office

This Record Drawing Project Submittal Form must be completed and submitted with all projects as part of the record drawings submittal process to ADOT.

Record Drawings shall be submitted electronically to: [RecordDrawings@azdot.gov](mailto:RecordDrawings@azdot.gov)

SUBMITTAL DATE: \_\_\_\_\_

PROJECT NUMBER: \_\_\_\_\_ TRACS NUMBER: \_\_\_\_\_

ROUTE: \_\_\_\_\_ COUNTY: \_\_\_\_\_ MILEPOST: \_\_\_\_\_

PROJECT DESCRIPTION: \_\_\_\_\_

*Project Info*

# Record Drawing Project Submittal Form

**BELOW IS A CHECKLIST OF ITEMS THAT NEED TO BE ADDRESSED AS PART OF THE RECORD DRAWING SUBMITTAL PROCESS**

- Are the Record Drawings being submitted as PDF/A?
- Were there any Addendums on this project?
  - No.
  - Yes, the addendums are included in the Record Drawings.
- Are all of the field red-lines shown on the plans, clouded and shown in red?
- Were there any Change Orders or Supplemental Agreements on this project that changed the plans?
  - No.
  - Yes, please list the Change Order(s) and sheet number (i.e. CO-4, sht. 25 of 185): \_\_\_\_\_
  - \_\_\_\_\_
  - \_\_\_\_\_
- Are the Change Orders identified and the Change Order number shown at the top right of the drawing in red, and the Change Order identified on the drawing by clouding and a triangle number?
- Has all of the information that the Contractor is required to provide been shown in red on the record drawings? (i.e. record drawing information for electrical items, pull box locations, etc.)
- Is the information in the "record drawing block" on the face sheet completed and show in red?
  - Are the Construction Administrator's name and date and the Record Drawing Designer's name and date shown in red?
  - Are the Construction Administrator and Record Drawing Designer designated as a PE?
- Do all of the drawings have the PE stamp and signature?
- Are the Record Drawing page numbers and dates shown on each sheet in red?
- Is the file size of each PDF/A file below < 100 MB?
- Is the PDF/A file unlocked and not password protected?
- Are the file names correct? (i.e. H123401C\_voll(pgs1to184of184)RecDwgs.pdf)

*Check List*

*RE Signature*

**RECORD DRAWING CERTIFICATION**

I HERBY CERTIFY THAT THESE RECORD DRAWINGS WERE MADE UNDER MY SUPERVISION OR AS NOTED AND ARE CORRECT TO THE BEST OF MY KNOWLEDGE AND BELIEF.

Construction Administrator (RE)  
(Signature Required)  
Registered Professional Engineer  
Rev. 8/2017

Registration Number

Expiration Date

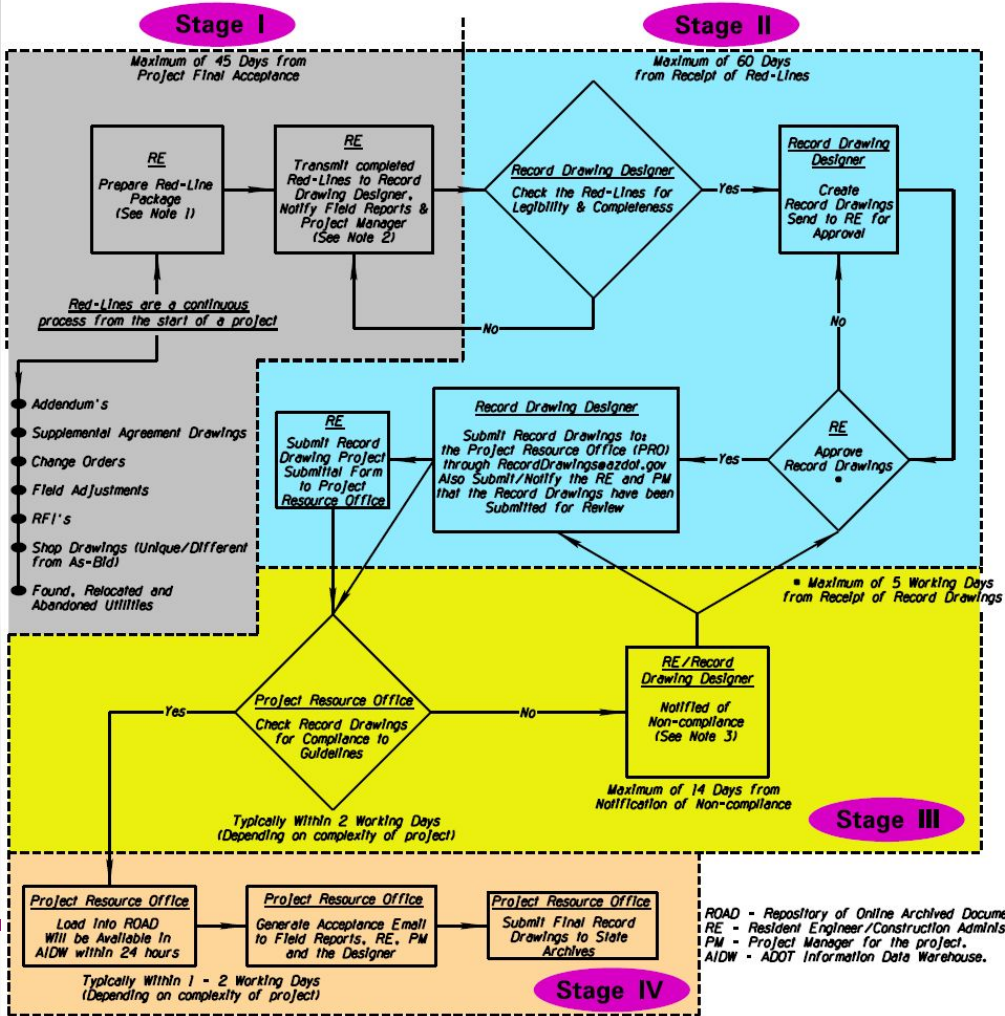


# FLOWCHART

Red-Lines / Record Drawing Plans Flowchart

# Red-Lines / Record Drawing Plans Flowchart

Rev. 10/2017



## Roles & responsibilities



# Questions on Record Drawings?

Contact Info: [RecordDrawings@azdot.gov](mailto:RecordDrawings@azdot.gov)

# PROJECT DELIVERY ACADEMY

## MODULE 6: CONSTRUCTION CLOSEOUT AND MAINTENANCE

- Record Drawings
- **ROAD Portal**

PROJECT DELIVERY ACADEMY

ROAD Portal

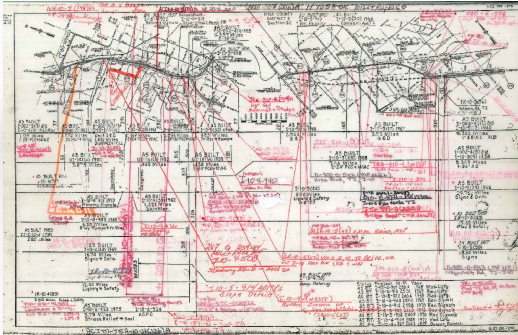


Repository of Online Archived Documents

# PROJECT DELIVERY ACADEMY

## ROAD Portal

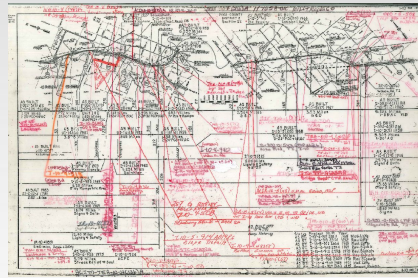
- ~ 9,500+ project files
- ~ The number of files in Engineering Records was exceeding our storage capabilities
- ~ ADOT started receiving plans as PDF documents



# PROJECT DELIVERY ACADEMY

## ROAD Portal

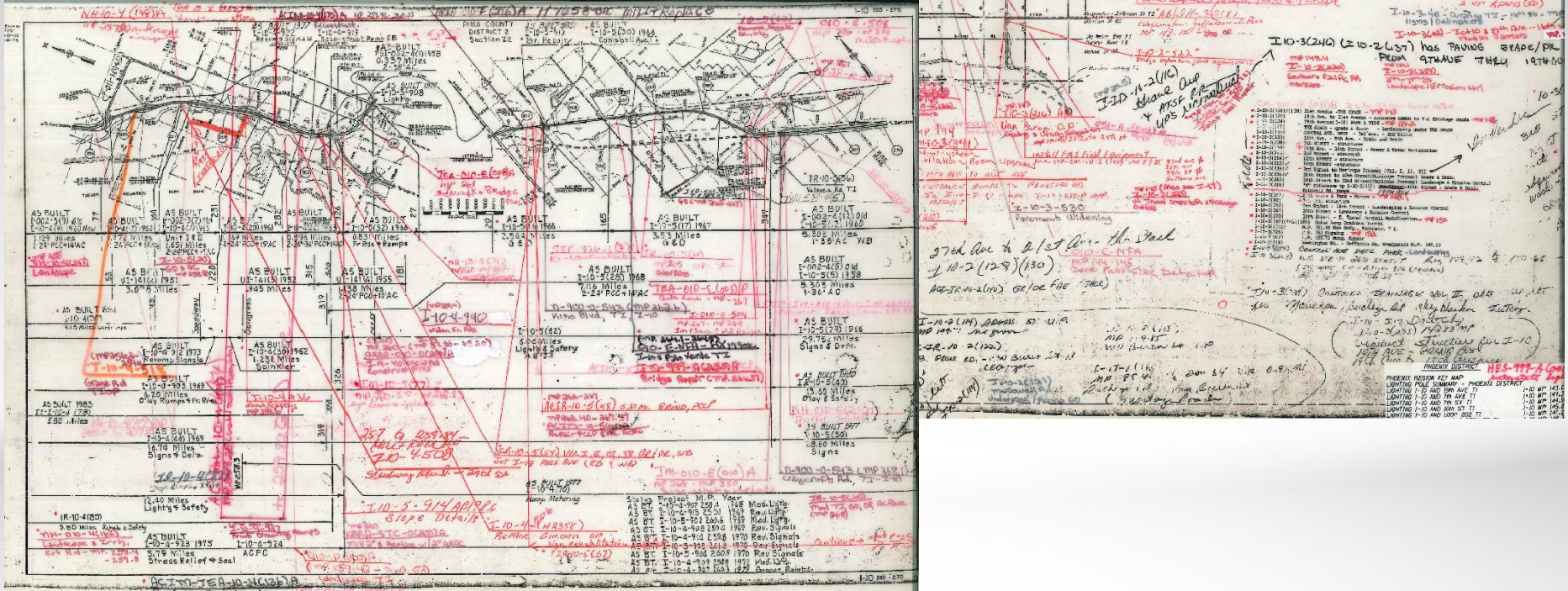
- ~ All of the project files in Engineering Records were scanned to PDF
- ~ The scanned documents were uploaded to the ROAD portal and made available to everyone
- ~ During our QC process we are finding that around 5% of the files either were not scanned or were not uploaded (we are working to get these uploaded)





# PROJECT DELIVERY ACADEMY

## Road Portal



Strip Maps from Engineering Records (I-10 Phoenix)

## WILL YOUR LICENSE FLY?

Don't get grounded. Fly with the Arizona Travel ID.

[Now Available](#)



Arizona Travel ID

### Travel ID

Vehicle Services

Office Hours and Locations

Online Services

Driver License, ID Application

Practice Driver Tests

Subscribe for updates

ServiceArizona.com

ADOT Alerts App

1-1-1

**ROAD**

ARIZONA HIGHWAYS

GRAND CANYON STATE LOGO SIGNS

FUEL TAX LICENSING SETUP Arizona

Report FRAUD

COMMERCIAL PERMITS

CIVIL RIGHTS

### ADOT News

- 11/6/2019 [Increasing number of Arizonans opting for AZ Travel ID](#)
  - 11/6/2019 [I-10/SR 210 Draft Environmental Assessment available for review](#)
  - 11/5/2019 [Twice-weekly closures begin Nov. 7 for US 60 Pinto Creek Bridge project](#)
  - 11/4/2019 [New SR 87 interchange upgrades I-10 connection at Eloy](#)
  - 11/4/2019 [MVD: Don't fall for email scam](#)
  - 11/4/2019 [ADOT Construction Academy creates fast track to careers](#)
- [View All News](#)

### ADOT Blog

- [For Hunter, a visit to ADOT's sign shop is 'everything'](#)
  - [Driving Safety Home: Know Snow](#)
  - [Doing the bridge slide - and we don't mean a dance move](#)
- [View All Posts](#)

### Arizona Traffic Fatalities

# 803

Jan. 1 to Nov. 3, 2019

[Read More](#)

### Registration Renewal

Record Number:

Vehicle ID Number (VIN):  (last 2 digits)

Link to the ROAD portal

Located on the main ADOT web page: [www.azdot.gov](http://www.azdot.gov)

PROJECT DELIVERY ACADEMY

ROAD Portal



<https://road.azdot.gov/>

# Questions on the ROAD Portal?

Contact Info: [RecordDrawings@azdot.gov](mailto:RecordDrawings@azdot.gov)

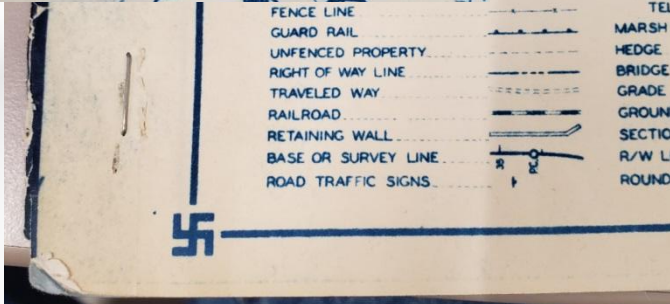
Presented by:

**Philip Schaffer**  
*Transportation Engineering  
Specialist*

*Project Resource Office*  
205 S 17<sup>th</sup> Avenue  
Phoenix, AZ 85007  
602-712-6845  
PSchaffer@azdot.gov

# PROJECT DELIVERY ACADEMY

## ROAD Portal



WWII ended September 2, 1945

# PROJECT DELIVERY ACADEMY

## ROAD Portal



### Engineering Records