

# **ADOT Project Delivery Academy**

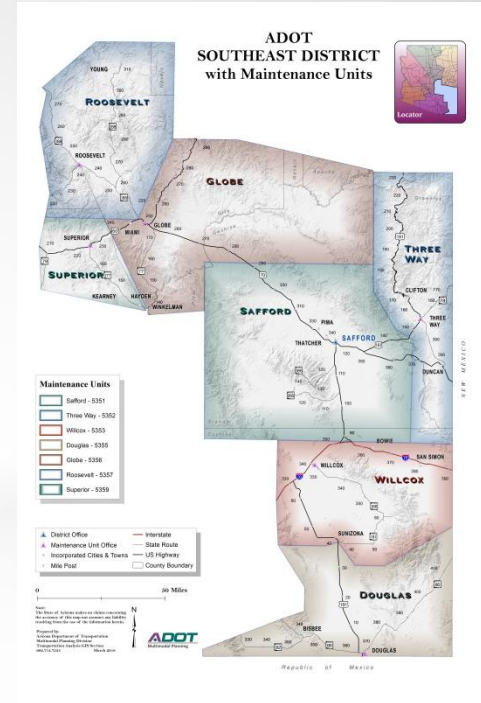
## *District Operations*

### **Considerations in Rural Districts**

Presentation by Brian Jevas, Assistant District Engineer  
Southeast District  
December 14, 2022

# Southeast District Overview

- Serves portions of six counties
- 14 incorporated communities
- Resident population 200,000
- Highest route SR366; lowest SR88
- 22 routes for 1,028 centerline miles
- 3 construction and 7 maintenance units



# Southeast District Overview

- What are the largest and smallest incorporated communities in the Southeast District?

# Largest and smallest cities in the District?

- Douglas at 17,000 and Winkelman at 310

# Issues in Rural Districts

- ADOT = big fish in small fish bowl
- LPA Projects = lots of hand holding
- Federal Aid = love – hate affair
- Residents = long memories



# Issues in Rural Districts

- Sensitive species

Mt. Graham Red Squirrel  
(Scientific Name: Goodluckus Findingone)



# Issues in Rural Districts

- Invasive species

Upper Sonoran Chupacabra  
Use appropriate avoidance mitigations



# Construction Issues

- Long-term per diem
- CE costs and mobilization
- Windshield time
- Small staff does everything
- Consultants needed; good consultants preferred
- Slower traffic isn't necessarily safer traffic





# Maintenance & Operations Issues

- Routine maintenance
- Incident response



# Maintenance & Operations Issues

- No, I can't raise the speed limit
- No, I can't pave your driveway
- No, I can't give you my old guardrail
- No, I can't clean out your wash
- ...but I'll be there 24-7-365 for the fires, floods, bomb threats, and blizzards



# TELEGRAPH FIRE



# TELEGRAPH FIRE





# MIAMI FLOODING







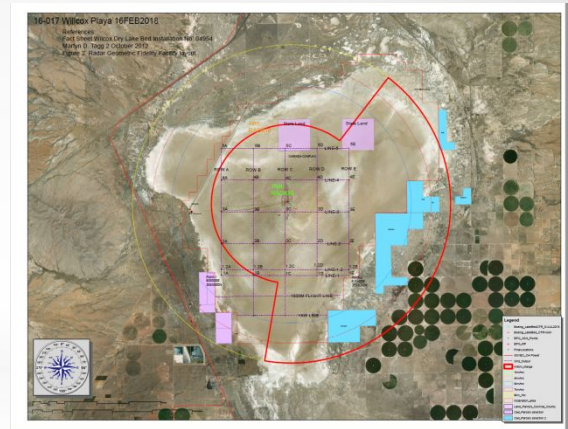
# Rural Multimodal Transportation?



Past



Present



Future



# Please Remember!

- Custodians of old infrastructure
- Invite maintenance to weekly construction progress meetings; walk the job 6 weeks before punch list day!
- One chance to get it right







**Why Do We Whistle Before Entering Culverts?**

# Rules of Thumb 🤗

- Cell phones have cameras and can record conversations
- Don't make promises you can't keep; keep the promises you make
- Trust and respect are earned
- The most challenging part of the 5-year plan is the 15 years before
- Public service – the hardest job you'll ever love

# Arizona Management System

- Continuous improvement becoming normal
- District metrics?
  - Construction focuses on costs and deliver
  - Maintenance focuses on safety and preservation
- Success factors
  - Humility of the Gemba
  - Patience and appreciation

# Guess Where!



# Questions?



Susanna Costner, c. 1920, Swift Trail



# Thanks and Good Luck!

